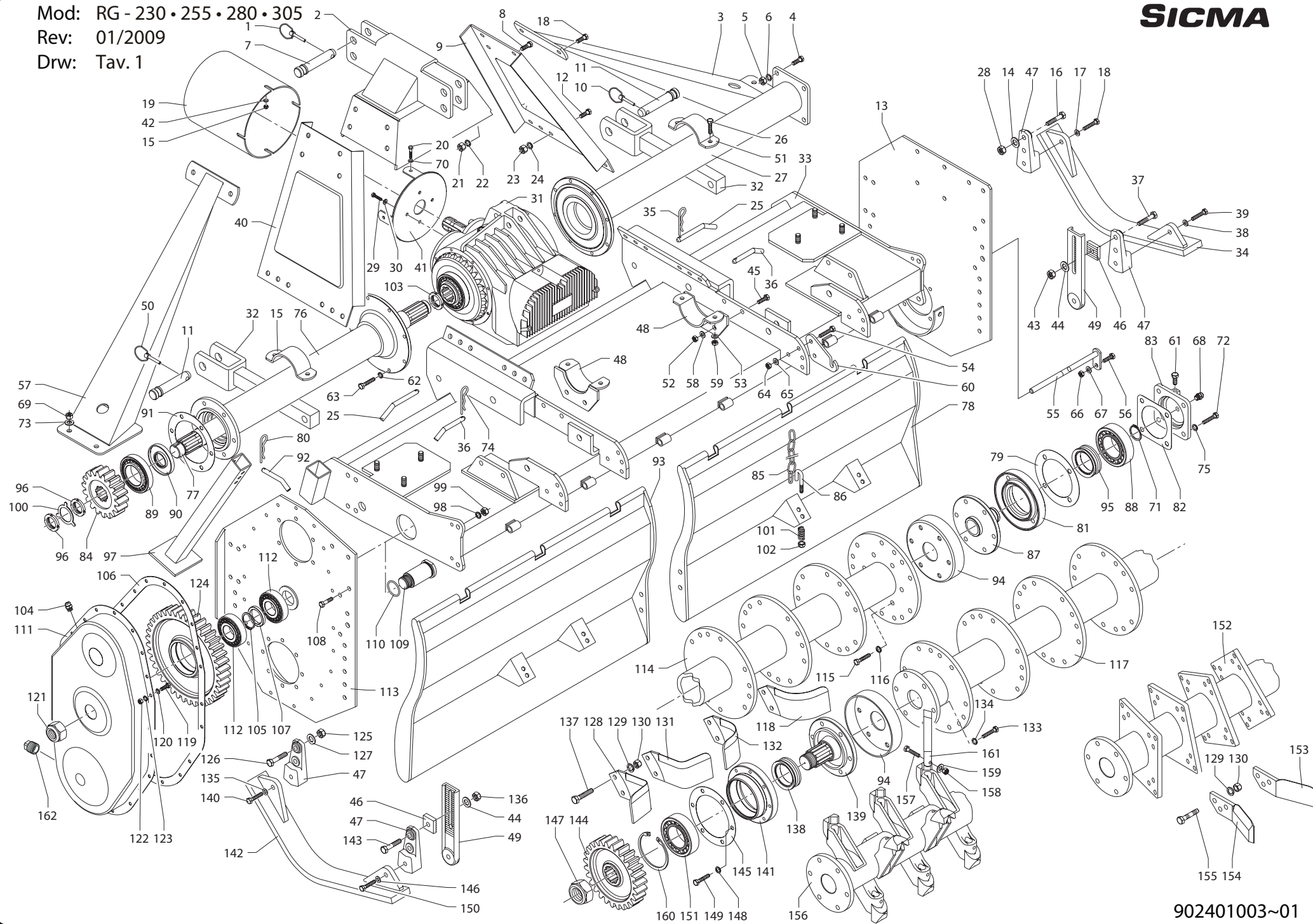


Type: FRESATRICE

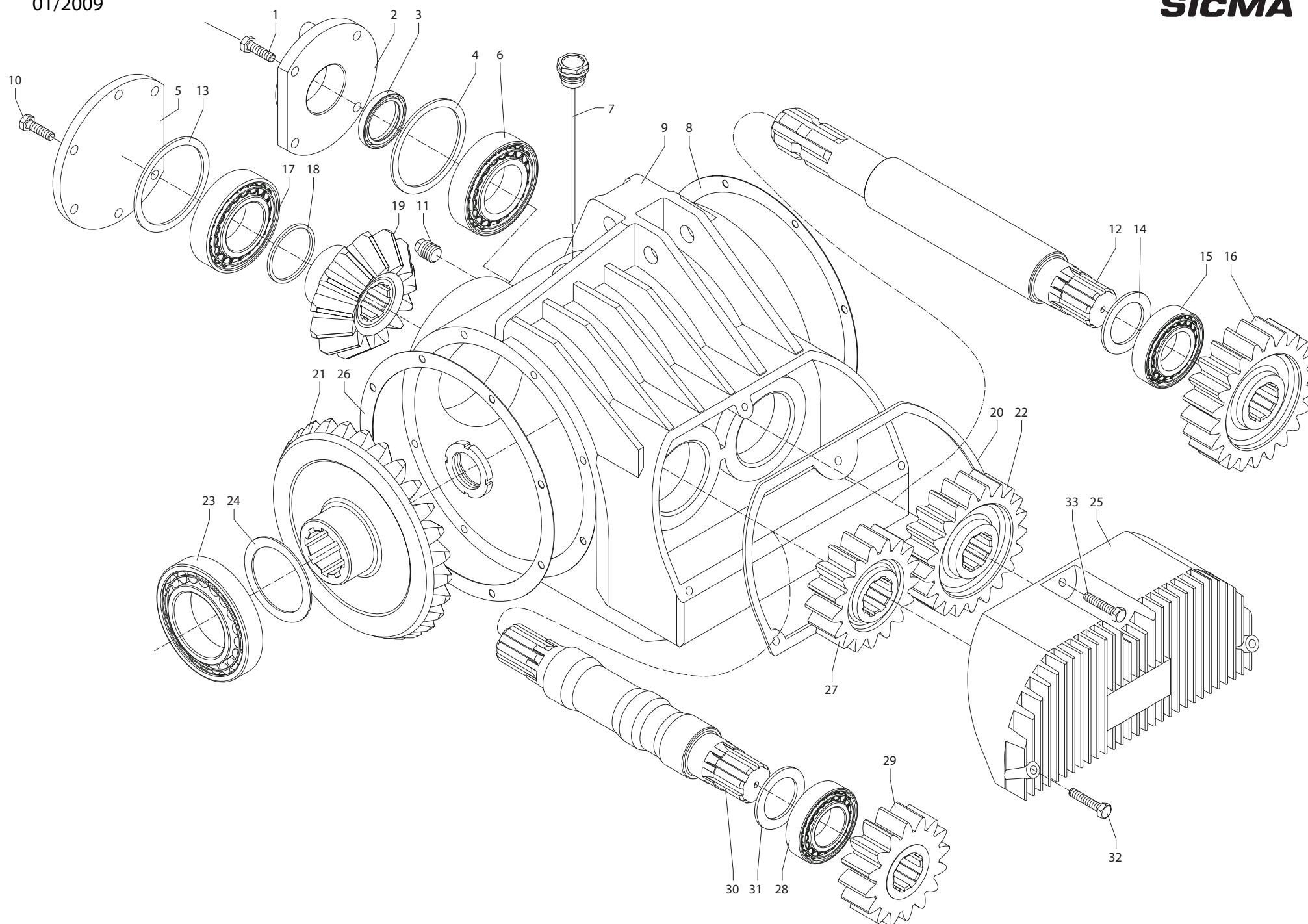
Mod: RG - 230 • 255 • 280 • 305

Rev: 01/2009

Drw: Tav. 1



902401003~01



TAV. 1 - FRESATRICE - RG - 230 • 255 • 280 • 305

RIF.	CODICE	DENOMINAZIONE	DESCRIPTION	BENENNUNG	DESIGNATION
1	6350010	Spina a scatto D10	Shear pin D10	Scherstift D10	Goujon de sureté D10
2	4004088	Castello superiore	3rd point upper plate	3. Oberer Punkt –Verbindungstueck	Cadre supérieur 3eme point
3	4004099	Longherone lato dx Rg 305	Right side support Rg 305	Traeger-Rechte Seite RG 305	Longeron coté droit RG 305
4	3371435	Vite M14x35x2 UNI 5537	Screw M14x35x2 UNI 5537	Schraube M14x35x2 UNI 5537	Vis M14x35x2 UNI 5537
5	3560012	Dado M14 pg UNI 5587	Nut M14 pg UNI 5587	Mutter M14 pg UNI 5587	Ecrou M14 pg UNI 5587
6	3972014	Rondella grower D14 UNI 1751	Washer D14 UNI 1751	Federscheibe D14 UNI 1751	Rondelle D14 UNI 1751
7	4304009	Perno 3° punto sup. D25 L= 138	3rd point pin D25 L= 138	3. Punkt-Bolzen D25 L= 138	Essieu 3eme p. D25 L=138
8	3371445	Vite M14x45x2 UNI 5537	Screw M14x42x2 UNI 5537	Schraube M14x42x2 UNI 5537	Vis M14x42x2 UNI 5537
9	4004096	Castello 3° punto dx	3rd point plate (right)	3.Punkt Verbindungstueck (Recht)	Cadre 3eme point (droit)
10	3650010	Spina a scatto D10	Shear pin D10	Scherstift D10	Goujon de sureté D10
11	4304008	Perno 3° punto inf. D28 L=143	3rd point pin D28 L=143	3.Punkt-Bolzen D28 L=143	Essieu 3eme p. D28 L=143
12	3371440	Vite M14x40x2 UNI 5537	Screw M14x40x2 UNI 5537	Schraube M14x40x2 UNI 5537	Vis M14x40x2 UNI 5537
13	4134011	Piastra lato esterno	External side plate	Platte-aussere seite	Plaque coté extérieure
14	3972014	Rondella grower D14 UNI 1751	Washer D14 UNI 1751	Federscheibe D14 UNI 1751	Rondelle D14 UNI 1751
15	3560012	Dado M8 pg UNI 5587	Nut M8 pg UNI 5587	Mutter M8 pg UNI 5587	Ecrou M8 pg UNI 5587
16	3371440	Vite M14x40x2 UNI 5537	Screw M14x40x2 UNI 5537	Schraube M14x40x2 UNI 5537	Vis M14x40x2 UNI 5537
17	3972014	Rondella grower D14 UNI 1751	Washer D14 UNI 1751	Federscheibe D14 UNI 1751	Rondelle D14 UNI 1751
18	3371440	Vite M14x40x2 UNI 5537	Screw M14x40x2 UNI 5537	Schraube M14x40x2 UNI 5537	Vis M14x40x2 UNI 5537
19	6654241	Protezione giunto	Shaft shield	Schutzwelle	Protection joint
20	3390820	Vite M8x20x1,25 UNI 5539	Screw M8x20x1,25 UNI 5539	Schraube M8x20x1,25 UNI 5539	Vis M8x20x1,25 UNI 5539
21	3560014	Dado M14 pg uni 5587	Nut M14 pg UNI 5587	Mutter M14 pg UNI 5587	Ecrou M14 pg UNI 5587
22	3972014	Rondella grower D14 UNI 1751	Washer D14 UNI 1751	Federscheibe D14 UNI 1751	Rondelle D14 UNI 1751
23	3560014	Dado M14 pg UNI 5587	Nut M14 pg UNI 5587	Mutter M14 pg UNI 5587	Ecrou M14 pg UNI 5587
24	3972014	Rondella grower D14 UNI 1751	Washer D14 UNI 1751	Federscheibe D14 UNI 1751	Rondelle D14 UNI 1751
25	4301589	Perno 3° punto inf. D19 L= 100	3rd point pin D19 L=100	3.Punkt-Bolzen D19 L=100	Essieu 3eme p. D19 L=100
26	3391235	Vite M12x35x1,75 uni 5539	Screw M12x35x1,75 UNI 5539	Schraube M12x35x1,75 UNI 5539	Vis M12x35x1,75 UNI 5539
27	4004042	Supporto lato esterno rg 230	External side support RG 230	Halterung-aussere Seite RG 230	Sup. coté extérieure RG 230
27	4004043	Supporto lato esterno rg 255	External side support RG 255	Halterung-aussere Seite RG 255	Sup. coté extérieure RG 255
27	4004044	Supporto lato esterno rg 280	External side support RG 280	Halterung-aussere Seite RG 280	Sup. coté extérieure RG 280
27	4004045	Supporto lato esterno rg 305	External side support RG 305	Halterung-aussere Seite RG 305	Sup. coté extérieure RG 305
28	3560014	Dado M14 pg UNI 5587	Nut M14 pg UNI 5587	Mutter M14 pg UNI 5587	Ecrou M14 pg UNI 5587
29	3390816	Vite M8x16x1,25 UNI 5539	Screw M8x16x1,25 UNI 5539	Schraube M8x16x1,25 UNI 5539	Vis M8x16x1,25 UNI 5539
30	3972008	Rondella grower D8 UNI 1751	Washer D8 UNI 1751	Federscheibe D8 UNI 1751	Rondelle D8 UNI 1751
31	6900010	Riduttore MZ-3A	Reducer MZ-3A	Reduzier MZ-3A	Reducteur MZ-3A
32	4004098	Braccio 3° punto inferiore	3rd lower point arm	Arm-3. Punkt	Bras 3eme point
33	4004083	Telaio rg 230	Frame RG 230	Rahmen RG 230	Cadre RG 230
33	4004084	Telaio rg 255	Frame RG 255	Rahmen RG 255	Cadre RG 25
33	4004085	Telaio rg 280	Frame RG 280	Rahmen RG 280	Cadre RG 280
33	4004086	Telaio rg 305	Frame RG 305	Rahmen RG 305	Cadre RG 305
34	4004068	Slitta lato esterno	External side skid	Schlitte-aussere Seite	Glissière coté extérieure
35	6351004	Coppiglia a R D4	Cotter pin D4	Splint D4	Goupille D4
36	4301590	Perno blocc. 3° p. inf. D22 L=95	Block pin D22 L=95	Spannungbolzen D22 L=95	Fixation essieu D22 L=95
37	3371450	Vite M14x50x2 UNI 5737	Screw M14x50x2 UNI 5737	Schraube M14x50x2 UNI 5737	Vis M14x50x2 UNI 5737
38	3972014	Rondella grower D14 UNI 1751	Washer D14 UNI 1751	Federscheibe D14 UNI 1751	Rondelle D14 UNI 1751
39	3371455	Vite M14x55x2 UNI 5737	Screw M14x55x2 UNI 5735	Schraube M14x55x2 UNI 5735	Vis M14x55x2 UNI 5735
40	4004097	Castello 3° punto sx	3rd point plate (left)	3.P. Verbindungstueck (Links)	Cadre 3eme point (gauche)
41	4934240	Supporto protezione giunto	Shaft shield support	Halterung Gelenkwellesschutz	Support protection joint
42	3972008	Rondella grower D8 UNI 1751	Washer D8 UNI 1751	Federscheibe D8 UNI 1751	Rondelle D8 UNI 1751
43	3560014	Dado M14 pg UNI 5587	Nut M14 pg UNI 5587	Mutter M14 pg UNI 5587	Ecrou M14 pg UNI 5587
44	3972014	Rondella grower D14 UNI 1751	Washer D14 UNI 1751	Federscheibe D14 UNI 1751	Rondelle D14 UNI 1751
45	3371440	Vite M14x40x2 UNI 5537	Screw M14x40x2 UNI 5737	Schraube M14x40x2 UNI 5737	Vis M14x40x2 UNI 5737
46	4704654	Piastra asta di regolazione	Adjusting rod plate	Platte Regelungstange	Plaque barre de réglage
47	4644030	Piastra attacco slitta	Skid fixing plate	Platte Schlittenverschluss	Plaque fixation glisière
48	4004146	Supporto fissaggio prolunghe	Fixing extensions support	Halterung Verlunb Befestigung	Support fixation prolonges
49	4704653	Asta regolazione slitta	Skid adjusting rod	Stange Regelungsschlitte	Barre réglage glissière
50	6350010	Spina a scatto D10	Shear pin D10	Scherstift D10	Goujon de sureté D10
51	4834019	Cravatta piatta	U-bolt	Halter	Etrier
52	3560014	Dado M14 pg UNI 5587	Nut M14 pg UNI 5587	Mutter M14 pg UNI 5587	Ecrou M14 pg UNI 5587
53	3972012	Rondella grower D12 UNI 1751	Washer D12 UNI 1751	Federscheibe D12 UNI 1751	Rondelle D12 UNI 1751
54	3391235	Vite M12x35x1,75 UNI 5539	Screw M12x35x1,75 UNI 5739	Schraube M12x35x1,75 UNI 5739	Vis M12x35x1,75 UNI 5739
55	4002330	Perno coperchio rg 230	Cover pin RG 230	Bolzen -Deckel RG 230	Pivot capot RG 230
55	4002332	Perno coperchio rg 255	Cover pin RG 255	Bolzen -Deckel RG 255	Pivot capot RG 255
55	4002333	Perno coperchio rg 280	Cover pin RG 280	Bolzen -Deckel RG 280	Pivot capot RG 280
55	4002334	Perno coperchio rg 305	Cover pin RG 305	Bolzen -Deckel RG 305	Pivot capot RG 305
56	3391230	Vite M12x30x1,75 UNI 5539	Screw M12x30x1,75 UNI 5739	Schraube M12x30x1,75 UNI 5739	Vis M12x30x1,75 UNI 5739
57	4004100	Longherone lato sx RG 305	Left support RG 305	Traeger recht RG 305	Longeron gauche RG 305
58	3972014	Rondella grower D14 UNI 1751	Washer D14 UNI 1751	Federscheibe D14 UNI 1751	Rondelle D14 UNI 1751
59	3560012	Dado M12 pg UNI 5587	Nut M12 pg UNI 5587	Mutter M12 pg UNI 5587	Ecrou M12 pg UNI 5587
60	4934778	Gancio catena	Chain hook	Kettehaken	Crochet chaine
61	3391010	Vite M10x10x1,5 UNI 5739	Screw M10x10x1,5 UNI 5739	Schraube M10x10x1,5 UNI 5739	Vis M10x10x1,5 UNI 5739
62	3972010	Rondella grower D10 UNI 1751	Washer D10 UNI 1751	Federscheibe D10 UNI 1751	Rondelle D10 UNI 1751
63	3391025	Vite M10x25x1,5 UNI 5739	Screw M10x25x1,5 UNI 5739	Schraube M10x25x1,5 UNI 5739	Vis M10x25x1,5 UNI 5739
64	3560012	Dado M12 pg UNI 5587	Nut M12 pg UNI 5587	Mutter M12 pg UNI 5587	Ecrou M12 pg UNI 5587
65	3972012	Rondella grower D12 UNI 1751	Washer D12 UNI 1751	Federscheibe D12 UNI 1751	Rondelle D12 UNI 1751
66	3667012	Dado autobloccante M12 pg alto	Self locking nut M12	Sperrmutter M12	Ecrou autobloquant M12
67	3972012	Rondella grower D12 UNI 1751	Washer D12 UNI 1751	Federscheibe D12 UNI 1751	Rondelle D12 UNI 1751
68	3444014	Tappo olio Visivo M14x1,5	Oil plug M14x1,5	Oelstopfen M14x1,5	Bouchon de l'huile M 14x1,5
69	3560014	Dado M14 pg UNI 5587	Nut M14 pg UNI 5587	Mutter M14 pg UNI 5587	Ecrou M14 pg UNI 5587
70	3972008	Rondella grower D8 UNI 1751	Washer D8 UNI 1751	Federscheibe D8 UNI 1751	Rondelle D8 UNI 1751
71	6320050	Seeger E D 50	Circlip E D 50	Seegersicherung E D 50	Bague d'arret E D 50
72	3391445	Vite M10x45 UNI 5739	Screw M10x45 UNI 5739	Schraube M10x45 UNI 5739	Vis M10x45 UNI 5739
73	3972014	Rondella grower D14 UNI 1751	Washer D14 UNI 1751	Federscheibe D14 UNI 1751	Rondelle D14 UNI 1751
74	6351004	Coppiglia a R D 4	Split pin D 4	Splint D 4	Goupille D 4

TAV. 1 - FRESATRICE - RG - 230 • 255 • 280 • 305

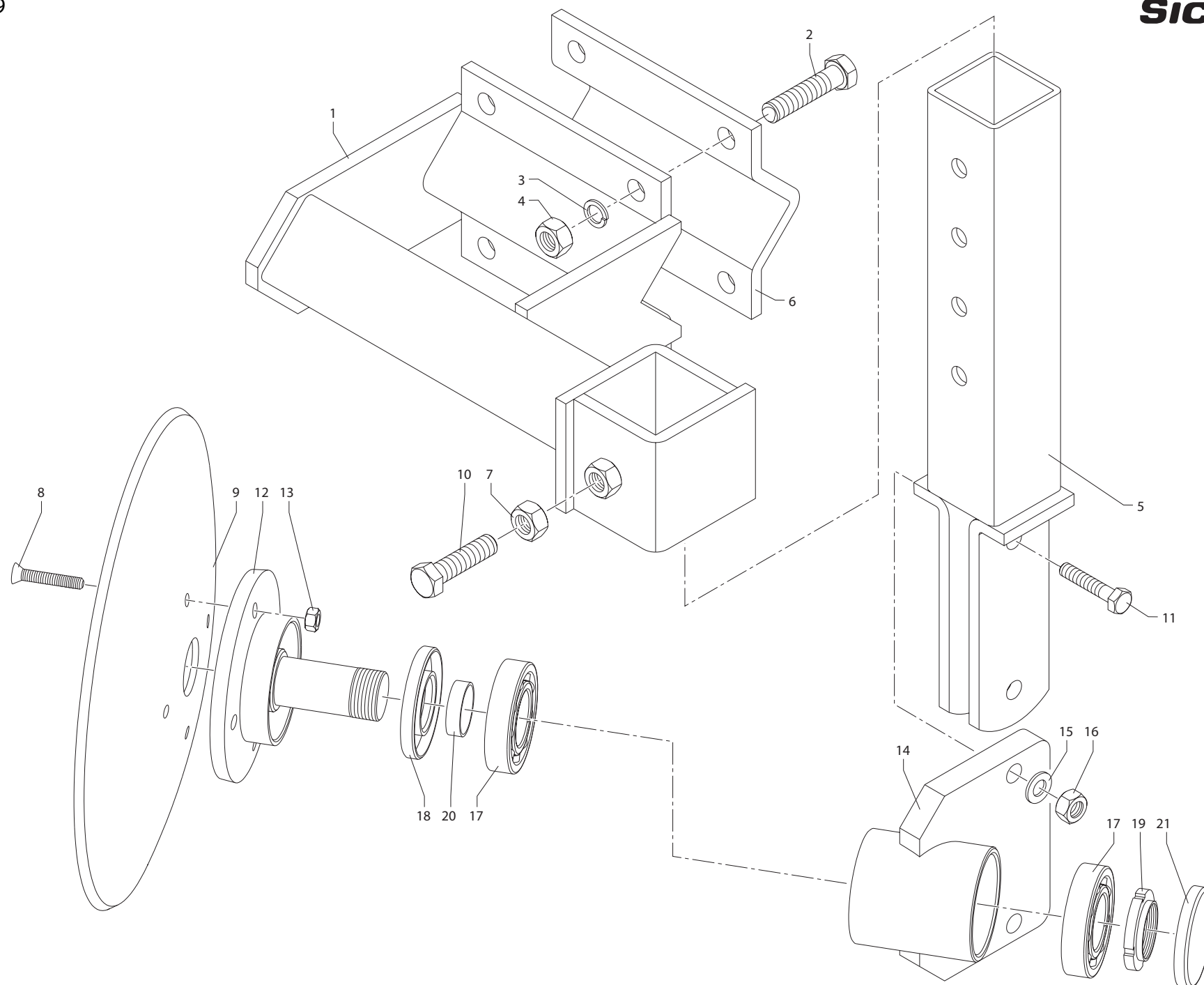
RIF.	CODICE	DENOMINAZIONE	DESCRIPTION	BENENNUNG	DESIGNATION
75	3972014	Rondella grower D14 UNI 1751	Washer D14 UNI 1751	Federscheibe D14 UNI 1751	Rondelle D14 UNI 1751
76	4004032	Supporto Albero corona rg 230	Shaft support RG 230	Halterung RG 230	Support RG 230
76	4004033	Supporto Albero corona rg 255	Shaft support RG 255	Halterung RG 255	Support RG 255
76	4004034	Supporto Albero corona rg 280	Shaft support RG 280	Halterung RG 280	Support RG 280
76	4004035	Supporto Albero corona rg 305	Shaft support RG 305	Halterung RG 305	Support RG 305
77	4214060	Albero corona rg 230	Shaft RG 230	Welle RG 230	Arbre RG 230
77	4214061	Albero corona rg 255	Shaft RG 255	Welle RG 255	Arbre RG 255
77	4214062	Albero corona rg 280	Shaft RG 280	Welle RG 280	Arbre RG 280
77	4214063	Albero corona rg 305	Shaft RG 305	Welle RG 305	Arbre RG 305
78	4004248	Coperchio dx rg 230	Right bonnet RG 230	Rechtdeckel RG 230	Capot droit RG 230
78	4004249	Coperchio dx rg 255	Right bonnet RG 255	Rechtdeckel RG 255	Capot droit RG 255
78	4004250	Coperchio dx rg 280	Right bonnet RG 280	Rechtdeckel RG 280	Capot droit RG 280
78	4004251	Coperchio dx rg 305	Right bonnet RG 305	Rechtdeckel RG 305	Capot droit RG 305
79	4784117	Guarnizione supporto esterno	Gasket	Dichtung	Joint
80	6350361	Spina a R D3 L 61	Split pin D3 L 61	Splint D3 L 61	Goupille D3 L 61
81	4644005	Supporto cuscinetto esterno	Bearing support	Halterung Lager	Support roulement
82	4784118	Guarniz. coperchio supp. Esterno	Bonnet gasket	Dichtung Deckel	Joint capot
83	4644001	Coperchio supporto esterno	External support bonnet	Halterung Deckel	Support extérieure capot
84	4724004	Ingranaggio conduttore Z=18	Driving gear Z18	Zahnrad Z18	Engrenage Z18
85	4674003	Catena coperchio n° 13 maglie	Chain (13 Chain link)	Kette (13Ketteglied)	Chaîne (13 maillon)
86	4302183	Gancio catena	Cahin plate	Metalplatte	Plaque chaîne
87	4704006	Mozzo lato esterno	Hub	Nabe	Moyeu
88	2006310	Cuscinetto 6310	Bearing 6310	Lager 6310	Roulement 6310
89	2032214	Cuscinetto 32214	Bearing 32214	Lager 32214	Roulement 32214
90	6105590	Paraolio 55x90x10 gm	Oil seal 55x90x10 gm	Oelabdichtung 55x90x10 gm	Pare-huile 55x90x10 gm
91	4784734	Guarniz. Sup. corona lato est.	Gasket	Dichtung	Joint
92	4234004	Perno piedino	Foot pin	Bolzen Fuss	Pivot pied
93	4004252	Coperchio sx rg 230	Left bonnet RG 230	Linksdeckel RG 230	Capot gauche RG 230
93	4004253	Coperchio sx rg 255	Left bonnet RG 255	Linksdeckel RG 255	Capot gauche RG 255
93	4004254	Coperchio sx rg 280	Left bonnet RG 280	Linksdeckel RG 280	Capot gauche RG 280
93	4004255	Coperchio sx rg 305	Left bonnet RG 305	Linksdeckel RG 305	Capot gauche RG 305
94	4144098	Coperchio parapolvere lato es.	Dust cover	Deckel	Couvercle
95	6203911	Gruppo GNL 6460	GNL 6460 support	Halterung GNL 6060	Support GNL 6060
96	3700045	Ghiera D45x1,5 km7	Metal ring D45x1,5 Km 7	Nutmutter D45x1,5 Km 7	Collier D45x1,5 Km 7
97	4004058	Piedino	Foot	Fuss	Pied
98	3972014	Rondella grower D14 UNI 1751	Washer D14 UNI 1751	Federscheibe D14 UNI 1751	Rondelle D14 UNI 1751
99	3540014	Dado M14 pf UNI 5587	Nut M14 pg UNI 5587	Mutter M14 pg UNI 5587	Ecrou M14 pg UNI 5587
100	3950045	Rosetta per ferno D45	Washer D45	Scheibe D45	Rondelle D45
101	4212214	Molla ammortizzatore coperchio	Spring	Feder	Ressort
102	3667012	Dado autobloccante M12 pg alto	Self locking nut M12	Nutmutter M12	Ecrou autobloquant M12
103	3840045	Ghiera autobloccante M45x1,5	Self lock. metal ring M45x1,5	Selbsperrendnutmutter M45x1,5	Collier autobloquant D45x1,5
104	3442022	Tappo vavola olio M22x1,5	Oil plug M22x1,5	Oelauspuffpropfen M22x1,5	Bouchon de l'huile M 22x1,5
105	6310100	Seeger I D100	Circlip I D100	Seegersicherung I D100	Bague d'arret I D100
106	4784116	Guarnizione coperchio trasmis.	Gasket	Dichtung	Joint
107	4594120	Distanziale cuscinetto	Bearing spacer	Verbindungstueck Lager	Entretoise roulement
108	3381435	Vite M14x35x1,5 UNI 5538	Screw M14x35x1,5 UNI 5538	Schraube M14x35x1,5 UNI 5538	Vis M14x35x1,5 UNI 5538
109	4204064	Perno ingranaggio di rinvio	Pin (intermediate gear)	Bolzen Zahnrad	Pivot engrènement
110	6800045	Guarniz.or rif. 133 D 45,69x2,62	O.Ring rif. 133 D 45,69x2,62	O.Ring rif. 133 D45,69x2,62	B. d'étanchéité D45,69x2,62
111	4114007	Coperchio trasmissione laterale	Cover	Deckel	Couvercle
111	4144007	Coperchio trasm. laterale Sicma	Cover Sicma	Deckel Sicma	Couvercle Sicma
112	2030310	Cuscinetto 30310	Bearing 30310	Lager 30310	Roulement 30310
113	4004060	Piastra lato trasmissione	Plate	Platte	Plaque
114	4004343	Rotore puglia rg 230	Rotor RG 230	Rotor RG 230	Rotor RG 230
114	4004344	Rotore puglia rg 255	Rotor RG 255	Rotor RG 255	Rotor RG 255
114	4004345	Rotore puglia rg 280	Rotor RG 280	Rotor RG 280	Rotor RG 280
114	4004346	Rotore puglia rg 305	Rotor RG 305	Rotor RG 305	Rotor RG 305
115	3391435	Vite M14x35x1,5 UNI 5739	Screw M14x35x1,5 UNI 5739	Schraube M14x35x1,5 UNI 5739	Vis M14x35x1,5 UNI 5739
116	2972014	Rondella grower D14 UNI 1751	Washer D14 UNI 1751	Federscheibe D14 UNI 1751	Rondelle D14 UNI 1751
117	4004349	Rotore normale rg 230	Normal rotor RG 230	Rotor RG 230 (normal)	Rotor RG 230 normal
117	4004350	Rotore normale rg 255	Normal rotor RG 255	Rotor RG 255 (normal)	Rotor RG 255 normal
117	4004351	Rotore normale rg 280	Normal rotor RG 280	Rotor RG 280 (normal)	Rotor RG 280 normal
117	4004352	Rotore normale rg 305	Normal rotor RG 305	Rotor RG 305 (normal)	Rotor RG 305 normal
118	4814004	Zappa curva dx	Right blade	Rechtes Messer	Couteau droit
119	3391035	Vite M10x35x1,5 UNI 5739	Screw M10x35x1,5 UNI 5739	Schraube M10x35x1,5 UNI 5739	Vis M10x35x1,5 UNI 5739
120	3972010	Rondella grower D10 UNI 1751	Washer D10 UNI 1751	Federscheibe D10 UNI 1751	Rondelle D10 UNI 1751
121	3641040	Dado autobloccante M40 pf	Self locking nut M40	Nutmutter M40	Ecrou autobloquant M40
122	3560010	Dado M10 pg UNI 5587	Nut M10 pg UNI 5587	Mutter M10 pg UNI 5587	Ecrou M10 pg UNI 5587
123	3972010	Rondella grower D10 UNI 1751	Washer D10 UNI 1751	Federscheibe D10 UNI 1751	Rondelle D10 UNI 1751
124	4724002	Ingranaggio di rinvio z=40	Intermediate gear Z40	Zahnrad Z40	Engrenage Z40
125	3560014	Dado M14 pg UNI 5587	Nut M14 pg UNI 5587	Mutter M14 pg UNI 5587	Ecrou M14 pg UNI 5587
126	3371450	Vite M14x50x2 UNI 5737	Screw M14x50x2 UNI 5737	Schraube M10x50x2 UNI 5737	Vis M14x50x2 UNI 5737
127	3972014	Rondella grower D14 UNI 1751	Washer D14 UNI 1751	Federscheibe D14 UNI 1751	Rondelle D14 UNI 1751
128	4814003	Zappa squadra sx	Left square blade	Linkes Winkelmesser	Couteau gauche à équerre
129	3972014	Rondella grower D14 UNI 1751	Washer D14 UNI 1751	Federscheibe D14 UNI 1751	Rondelle D14 UNI 1751
130	3540014	Dado M14 pf UNI 5587	Nut M14 pg UNI 5587	Mutter M14 pg UNI 5587	Ecrou M14 pg UNI 5587
131	4814002	Zappa squadra dx	Right square blade	Rechtes Winkelmesser	Couteau droit à équerre
132	4814005	Zappa curva sx	Left blade	Linkes Messer	Couteau gauche
133	3391435	Vite M14x35x2 UNI 5539	Screw M14x35x2 UNI 5739	Schraube M14x35x2 UNI 5739	Vis M14x35x2 UNI 5739
134	3972014	Rondella grower D14 UNI 1751	Washer D14 UNI 1751	Federscheibe D14 UNI 1751	Rondelle D14 UNI 1751
135	3972014	Rondella grower D14 UNI 1751	Washer D14 UNI 1751	Federscheibe D14 UNI 1751	Rondelle D14 UNI 1751
136	3560014	Dado M14 pg UNI 5587	Nut M14 pg UNI 5587	Mutter M14 pg UNI 5587	Ecrou M14 pg UNI 5587
137	3101440	Vite M14x40 pf filetto 20	Screw M14x40 thread 20	Schraube M14x40 Gewinde 20	Vis M14x40 filetage 20
138	6200750	Gruppo GNL 0750	GNL 0750 support	Halterung GNL 0750	Support GNL 0750
139	4724008	Mozzo ingranaggio condotto	Hub	Nabe	Moyeur
140	3371440	Vite M14x40x2 pf UNI 5737	Screw M14x40x2 UNI 5737	Schraube M14x40x2 UNI 5737	Vis M14x40x2 UNI 5737

TAV. 1 - FRESATRICE - RG - 230 • 255 • 280 • 305

RIF.	CODICE	DENOMINAZIONE	DESCRIPTION	BENENNUNG	DESIGNATION
141	4704009	Supporto ingranaggio condotto	Gear support	Halterung Zahnrad	Support engrenage
142	4004067	Slitta lato trasmissione	Skid	Schlitte	Glissière
143	3371450	Vite M14x50x2 pf UNI 5737	Screw M14x50x2 UNI 5737	Schraube M14x50x2 UNI 5737	Vis M14x50x2 UNI 5737
144	4724003	Ingranaggio conduttore z=27	Driving gear Z=27	Zahnrad Z=27	Engrenage Z=27
145	4784635	Guarnizione supp. ingr. Condotto	Gasket	Dichtung	Joint
146	3972014	Rondella grower D14 UNI 1751	Washer D14 UNI 1751	Federscheibe D14 UNI 1751	Rondelle D14 UNI 1751
147	3641050	Dado autobloccante M50 pf	Self locking nut M50	Nutmutter M50	Ecrou M50
148	3972010	Rondella grower D10 UNI 1751	Washer D10 UNI 1751	Federscheibe D10 UNI 1751	Rondelle D10 UNI 1751
149	3391030	Vite M10x30x1,5 UNI 5739	Screw M10x30x1,5 UNI 5739	Schraube M10x30x1,5 UNI 5739	Vis M10x30x1,5 UNI 5739
150	3371455	Vite M14x55x2 pf uni 5737	Screw M14x55x2 UNI 5737	Schraube M14x55x2 UNI 5737	Vis M14x55x2 UNI 5737
151	2821312	Cuscinetto 21312	Bearing 21312	Lager 21312	Roulement 21312
152	4004008	Rotore per lame RG-230	Rotor for knives RG-230	Rotor fuer Messer RG-230	Rotor pour couteaux RG-230
152	4004009	Rotore per lame RG-255	Rotor for knives RG-255	Rotor fuer Messer RG-255	Rotor pour couteaux RG-255
152	4004010	Rotore per lame RG-280	Rotor for knives RG-280	Rotor fuer Messer RG-280	Rotor pour couteaux RG-280
152	4004011	Rotore per lame RG-305	Rotor for knives RG-305	Rotor fuer Messer RG-305	Rotor pour couteaux RG-305
153	4814514	Coltello dx	Right shaped blade	Rechtes Messer	Couteau droit
154	4814515	Coltello sx	Left shaped blade	Linkes Messer	Couteau gauche
155	3101445	Vite M14x45 p.f. filetto 20	Screw M14x45 thread 20	Schraube M14x45 Gewinde 20	Vis M14x45 filetage 20
156	4004170	Rotore porta denti RG-230	Teeth holder rotor RG-230	Rotor Zahntraeger RG-230	Rotor porte-dents RG-230
156	4004171	Rotore porta denti RG-255	Teeth holder rotor RG-255	Rotor Zahntraeger RG-255	Rotor porte-dents RG-255
156	4004172	Rotore porta denti RG-280	Teeth holder rotor RG-280	Rotor Zahntraeger RG-280	Rotor porte-dents RG-280
156	4004173	Rotore porta denti RG-305	Teeth holder rotor RG-305	Rotor Zahntraeger RG-305	Rotor porte-dents RG-305
157	3371060	Vite M10x60x1,5 uni 5737	Screw M10x60x1,5 UNI 5737	Schraube M10x60x1,5 UNI 5737	Vis M10x60x1,5 UNI 5737
158	3667010	Dado autobl. M10 pg alto	Self locking nut M10	Nutmutter M10	Ecrou autobloquant M10
159	3932010	Rondella piana D10 uni 6592	Flat washer D10 UNI 6592	Glattscheibe D10 UNI 6592	Rond. plane D10 UNI 6592
160	6310130	Seeger I D130	Circlip I D130	Seegersicherung I D130	Bague d'arret I D130
161	4844006	Spuntone	Tooth	Vierkantzinken	Dent
162	3441022	Tappo conico M22x1,5	Plug M22x1,5	Stopfen M22x1,5	Bouchon M22x1,5

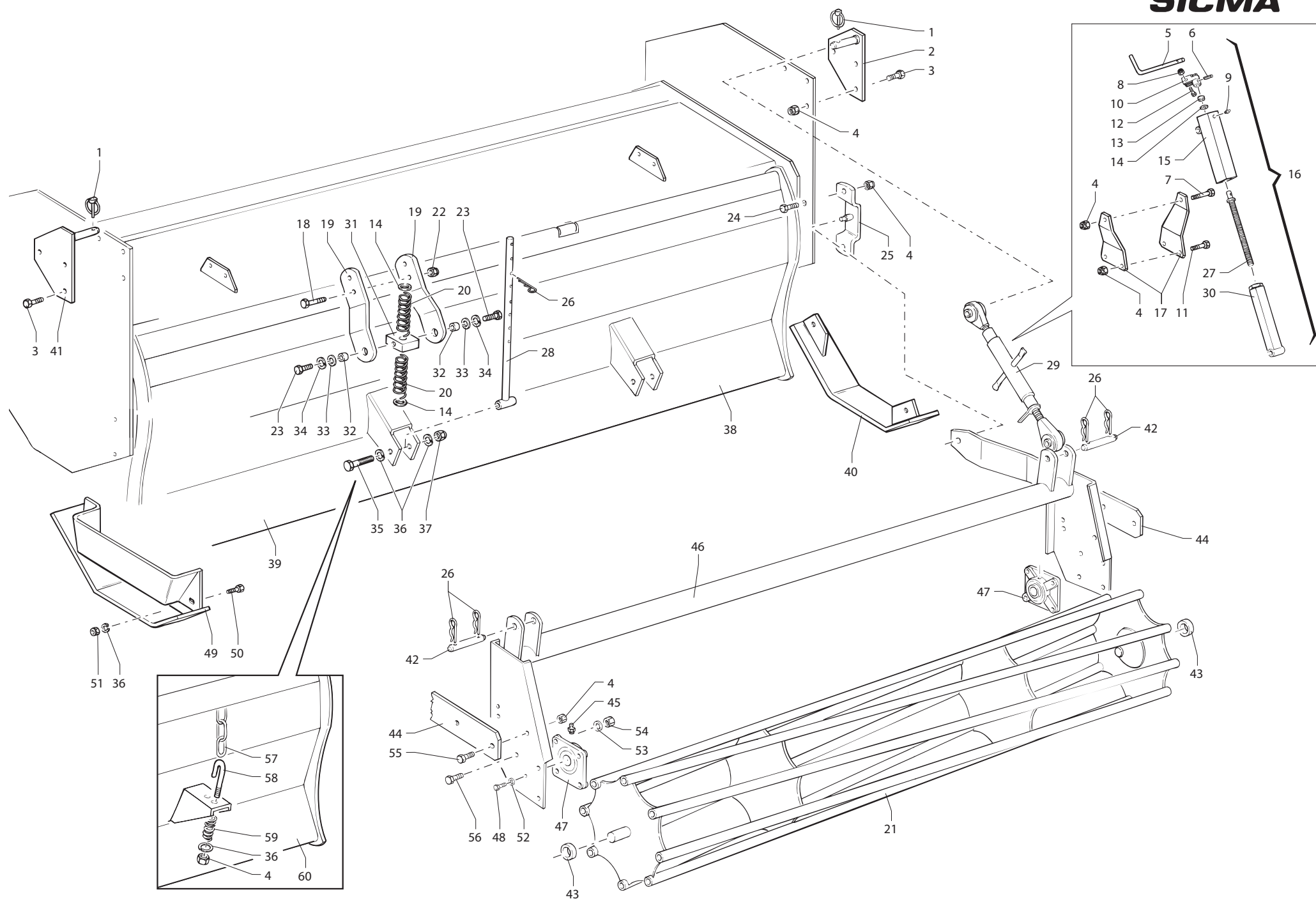
TAV. 2 - RIDUTTORE MZ - 3A

RIF.	CODICE	DENOMINAZIONE	DESCRIPTION	BENENNUNG	DESIGNATION
1	8.1.1.00073	Vite M10x30x1,5 UNI 5739	Screw M10x30x1,5 UNI 5739	Schraube M10x30x1,5 UNI 5739	Vis M10x30x1,5 UNI 5739
2	0.717.1326.00	Coperchio aperto	Open cover	Offendeckel	Couvercle ouverte
3	8.7.3.00398	Paraolio 35x65x10	Oil seal 35x65x10	Oelabdichtung 35x65x10	Pare-huile 35x65x10
4	0.703.7500.00	Spes. di registrazione D85,3x99,7	Thickness D85,3x99,7	Dicke D85,3x99,7	Epaisseur D85,3x99,7
5	0.703.1300.01	Coperchio chiuso	Closed cover	Abschlussdeckel	Couvercle fermé
6	8.0.9.00107	Cuscinetto a rulli conici 30309	Tapered roller bearing 30309	Kegelrollenlager 30309	Roul. à rouleaux coniques 30309
7	0.703.7114.00	Tappo carico livello olio	Oil level charge plug	Einfüllstopfen	Bouchon charge niveau huile
8	0.250.7200.00	Guarnizione	Gasket	Dichtung	Etanchéité
9	0.703.0301.01	Carter coppia conica	Gearbox	Gehäuse	Carter
10	8.1.1.00061	Vite M10x25x1,5 UNI 5739	Screw M10x25x1,5 UNI 5739	Schraube M10x25x1,5 UNI 5739	Vis M10x25x1,5 UNI 5739
11	8.6.5.0006	Tappo conico 3/8" gas	Oil plug 3/8" gas	Oelstopfen 3/8" gas	Bouchon de l'huile 3/8" gas
12	0.703.2009.00	Albero calettato 1" 3/4	Shaft 1" 3/4	Welle 1" 3/4	Arbre 1" 3/4
13	0.703.7500.00	Spes. di registrazione D85,3x99,7	Thickness D85,3x99,7	Dicke D85,3x99,7	Epaisseur D85,3x99,7
14	0.252.7200.00	Spes. di registrazione D45,3x65,3	Thickness D45,3x65,3	Dicke D45,3x65,3	Epaisseur D45,3x65,3
15	8.0.9.00125	Cuscinetto a rulli conici 32209	Tapered roller bearing 32209	Kegelrollenlager 32209	Roul. à rouleaux coniques 32209
16	0.703.5016.02	Ingranaggio cambio z=22	Gear Z22	Zahnrad Z22	Engrènement Z22
17	8.0.9.00124	Cuscinetto rulli conici 32211	Tapered roller bearing 32211	Kegelrollenlager 32211	Roul. à rouleaux coniques 32211
18	0.113.7500.00	Spes. di registrazione D55,3x61,7	Thickness D55,3x61,7	Dicke D55,3x61,7	Epaisseur D55,3x61,7
19	0.703.5202.00	Pignone conico z=13	Bevel pinion Z13	Kegelritzel Z13	Pignon conique Z13
20	0.703.7202.01	Guarnizione cambio	Gasket	Dichtung	Entretoise
21	0.703.6202.00	Corona conica Z=28	Ring bevel gear Z28	Kegelradkranz Z28	Couronne conique Z28
22	0.709.5027.02	Ingranaggio cambio z=21	Gear Z21	Zahnrad Z21	Engrenage Z21
23	8.0.9.00184	Cuscinetto a rulli conici 30214	Tapered roller bearing 30214	Kegelrollenlager 30214	Roul. à rouleaux coniques 30214
24	0.249.7500.00	Spessore corona	Thickness	Dicke	Epaisseur
25	0.703.1401.00	Coperchio cambio	Cover	Deckel	Couvercle
26	0.250.7200.00	Guarnizione	Gasket	Dichtung	Entretoise
27	0.709.5024.02	Ingranaggio cambio z=17	Gear Z17	Zahnrad Z17	Engrenage Z17
28	8.0.9.00125	Cuscinetto rulli conici 32209	Tapered roller bearing 32209	Kegelrollenlager 32209	Roul. à rouleaux coniques 32209
29	0.703.5015.02	Ingranaggio cambio Z=16	Gear Z16	Zahnrad Z16	Engrenage Z16
30	0.703.3007.02	Albero intermedio	Intermediate shaft	Vorgelegewelle	Arbre intermédiaire
31	0.252.7500.00	Spes. di registrazione D45,3x65,3	Thickness D45,3x65,3	Dicke D45,3x65,3	Epaisseur D45,3x65,3
32	8.1.7.00126	Vite M8x40 UNI 5449	Screw M8x40 UNI 5449	Schraube M8x40 UNI 5449	Vis M8x40 UNI 5449
33	8.1.7.00121	Vite M8x25 UNI 5449	Screw M8x25 UNI 5449	Schraube M8x25 UNI 5449	Vis M8x25 UNI 5449



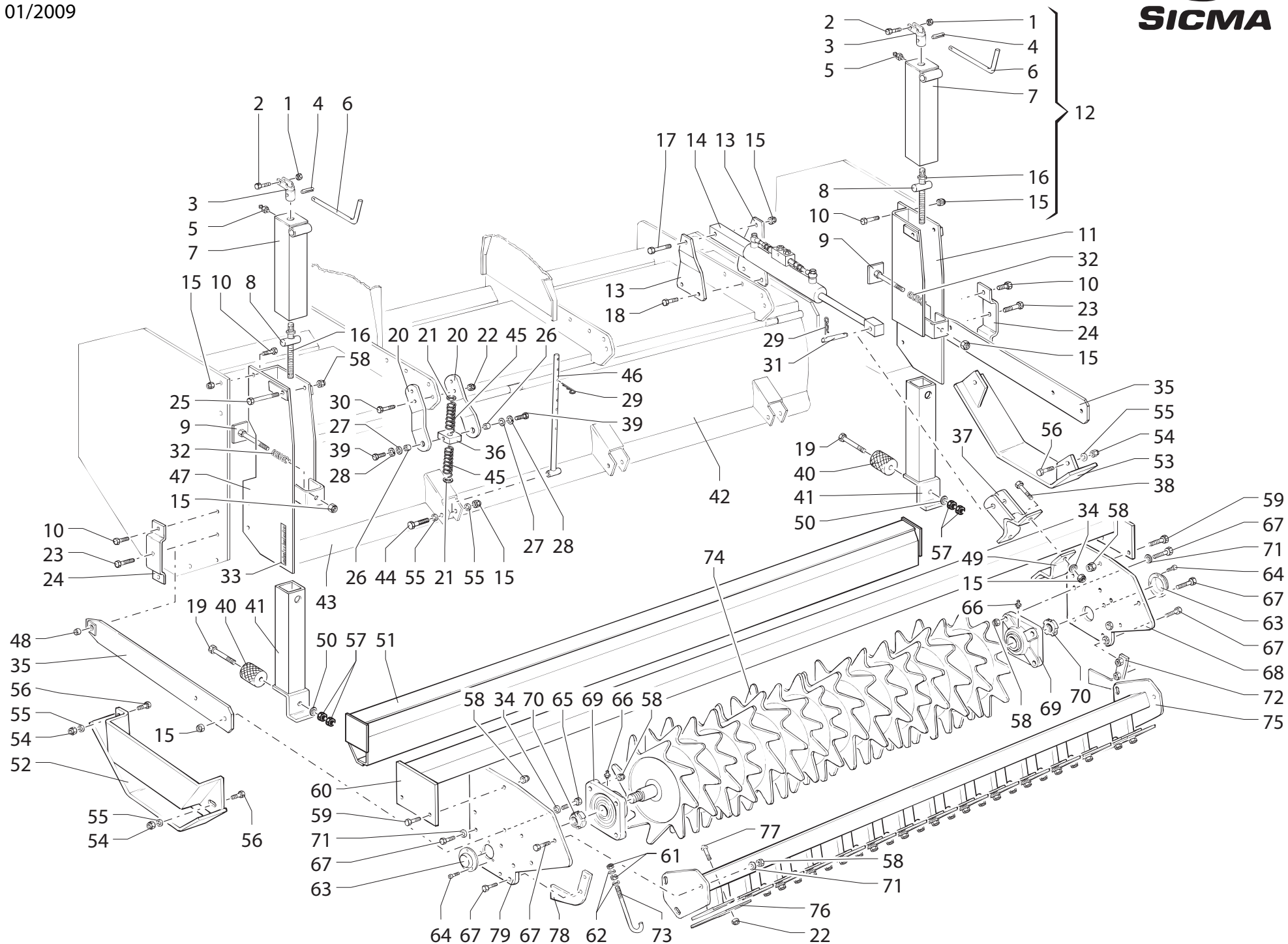
TAV. 3 - KIT FRANGIZOLLE RG

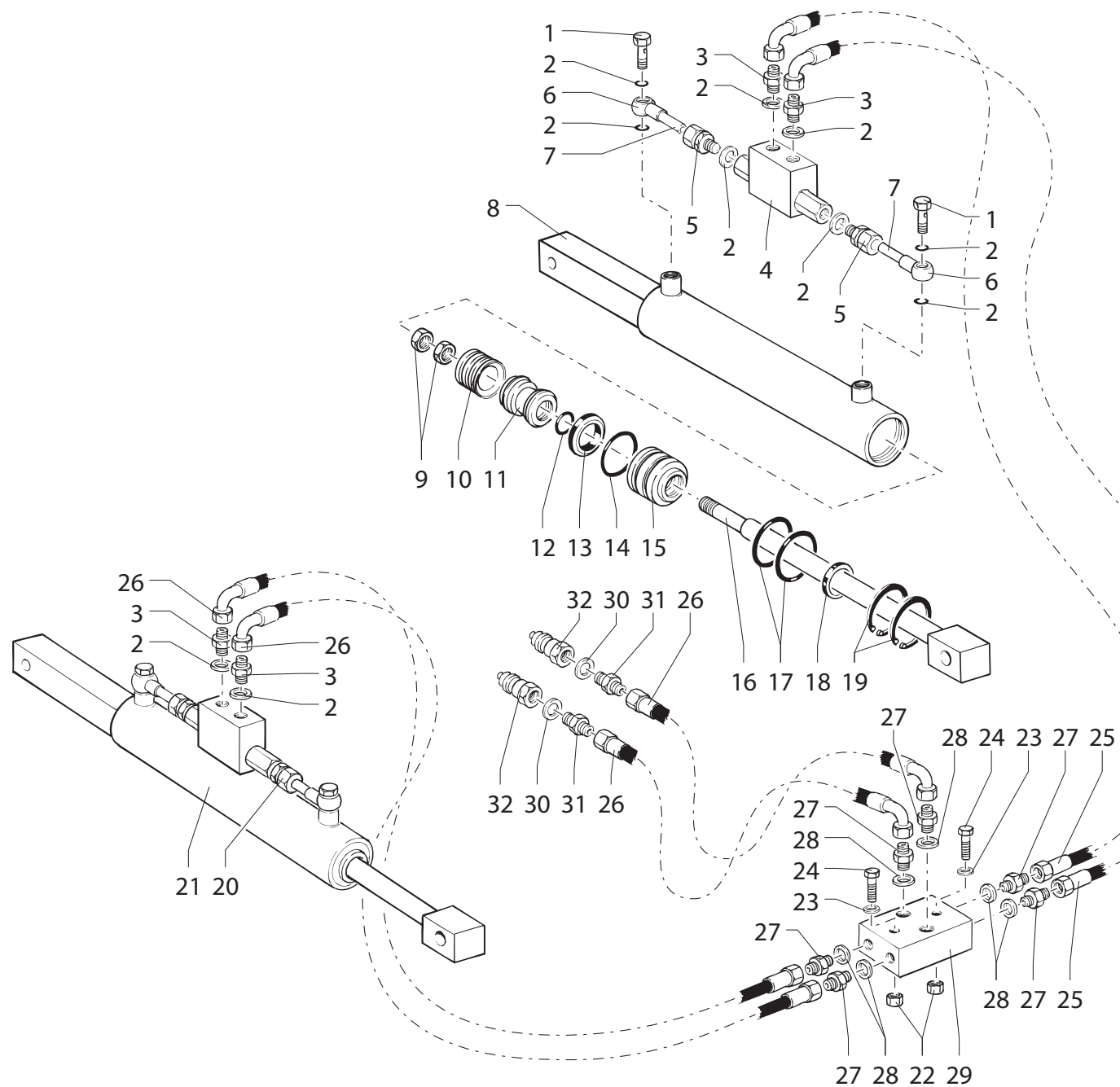
RIF.	CODICE	DENOMINAZIONE	DESCRIPTION	BENENNUNG	DESIGNATION
1	4004175	Supporto disco frangizolle	Clod smasher disk support	Halterung-Scheibeschollenbrecher	Support disque efface traces
2	3381670	Vite M14x70x1,5 UNI 5738	Screw M14x70x1,5 UNI 5738	Schraube M14x70x1,5 UNI 5738	Vis M14x70x1,5 UNI 5738
3	3972016	Rondella Grower D16 UNI 1751	Washer D16 UNI 175	1 Federscheibe D16 UNI 1751	Rondelle D16 UNI 1751
4	3540016	Dado M16 pf UNI 5587	Nut M16 UNI 5587	Mutter M16 UNI 5587	Ecrou M16 UNI 5587
5	4004178	Sostegno disco frangizolle	Clod smasher disk support	Halterung-Scheibeschollenbrecher	Support disque efface traces
6	4834031	Piastra a V per supporto	V plate for support	V Platte fuer Halterung	Plaque à V pour support
7	3560014	Dado M14 pg UNI 5587	Nut M14 UNI 5587	Mutter M14 UNI 5587	Ecrou M14 UNI 5587
8	3331030	Vite tspei M10x30 pg UNI 5933	Screw tspei M10x30 UNI 5933	Schraube tspei M10x30 UNI 5933	Vis tspei M10x30 UNI 5933
9	4114001	Disco laterale frangizolle	Clod-smasher side disk	Seitlichescheibe-Schollenbrecher	Disque latéral efface traces
10	3391660	Vite M14x60x2 UNI 5739	Screw M14x60x2 UNI 5739	Schraube M14x60x2 UNI 5739	Vis M14x60x2 UNI 5738
11	3381460	Vite M14x60x1,5 uni 5738	Screw M14x60x1,5 UNI 5739	Schraube M14x60x1,5 UNI 5739	Vis M14x60x1,5 UNI 5738
12	4004177	Mozzo sostegno disco	Disk support hub	Nabe-Scheibehalterung	Moyeu support disque
13	3667010	Dado autob. M10 pg alto	Self locking nut M10	Selbssicherndemutter M10	Ecrou autobloquant M10
14	4004176	Complessivo supporto disco	Disk support	Scheibehalterung	Support disque
15	3972014	Rondella Grower D14 UNI 1751	Washer D14 UNI 1751	Federscheibe D14 UNI 1751	Rondelle D14 UNI 1751
16	3540014	Dado M14 pf UNI 5587	Nut M14 UNI 5587	Mutter M14 UNI 5587	Ecrou M14 UNI 5587
17	2730207	Cuscinetto 30207	Bearing 30207	Lager 30207	Roulement 30207
18	6204572	Paraolio D45x72x10 pp	Oil seal D45x72x10	Oelabdichtung D45x72x10	Pare-huile D45x72x10
19	3840035	Ghiera autob. D35 basso	Self locking metal ring D35	Selbssperrendnutmutter D35	Collier autobloquant D35
20	4534006	Distanziale supporto	Support spacer	Distanzstueck-Halterung	Entretoise support
21	6100072	Cappellotto di chiusura D 72	Block cover D72	Abschlusskappe D72	Capuchon de fermeture D72



TAV. 4 - RULLO A GABBIA RG-230 • 255 • 280 • 305

RIF.	CODICE	DENOMINAZIONE	DESCRIPTION	BENENNUNG	DESIGNATION
1	6331058	Spina a scatto ø 10x58	Linch pin ø 10x58	Klappsplint ø 10x58	Goujon de sûreté ø 10x58
2	4004028	Piastra per snodo dx	Plate	Platte	Plaque
3	31514040	Vite M14x40x2 UNI 5739	Screw M14x40x2 UNI 5739	Schraube M14x40x2 UNI 5739	Vis M14x40x2 UNI 5739
4	34106014	Dado autobloccante M14 PG alto UNI 7473	Self locking nut M14 PG UNI 7473	Selbstsperrendmutter M14 PG UNI 7473	Ecrou autobloquant M14 PG UNI 7473
5	4334001	Manovella di registro "RG-SP"	Lever	Gelenkhebel	Manivelle
6	6330536	Spina elastica ø 5x36	Split pin ø 5x36	Splint ø 5x36	Goupille elastique ø 5x36
7	31314085	Vite M14x85x2 UNI 5737	Screw M14x85x2 UNI 5737	Schraube M14x85x2 UNI 5737	Vis M14x85x2 UNI 5737
8	34106008	Dado autobloccante M8 PG alto UNI 7473	Self locking nut M8 PG UNI 7473	Selbstsperrendmutter M8 PG UNI 7473	Ecrou autobloquant M8 PG UNI 7473
9	6561006	Ingrassatore a 90° M6x1	Grease nipple M6x1	Schmiernippel M6x1	Graisser M6x1
10	4005303	Attacco per manovella	Connection	Verbindung	Attaque
11	31514050	Vite M14x50x2 UNI 5739	Screw M14x50x2 UNI 5739	Schraube M14x50x2 UNI 5739	Vis M14x50x2 UNI 5739
12	30008040	Vite M8x40x1,25 UNI 5737	Screw M8x40x1,25 UNI 5737	Schraube M8x40x1,25 UNI 5737	Vis M8x40x1,25 UNI 5737
13	4333039	Boccola	Bushing	Büchse	Douille
14	34120020	Rondella piana ø 20 UNI 6592	Washer ø 20 UNI 6592	Scheibe ø 20 UNI 6592	Rondelle ø 20 UNI 6592
15	4004148	Compl. tubo registro interno	Telescopic piping	Teleskoprohr	Tube télescopique
16	4004147	Registro rullo	Register	Einstellschraube	Registre
17	4134097	Staffa per registro rullo	Bracket	Pratze	Bride
18	31312050	Vite M12x50x1,75 UNI 5739	Screw M12x50x1,75 UNI 5739	Schraube M12x50x1,75 UNI 5739	Vis M12x50x1,75 UNI 5739
19	4834002	Braccio regolazione coperchio	Arm	Arm	Bras
20	4214577	Molla coperchio	Spring	Feder	Ressort
21	4004182	Rullo a gabbia RG-230	Crumbler RG-230	Stabwalze RG-230	Rouleau cage RG-230
21	4004183	Rullo a gabbia RG-255	Crumbler RG-255	Stabwalze RG-255	Rouleau cage RG-255
21	4004184	Rullo a gabbia RG-280	Crumbler RG-280	Stabwalze RG-280	Rouleau cage RG-280
21	4004185	Rullo a gabbia RG-305	Crumbler RG-305	Stabwalze RG-305	Rouleau cage RG-305
22	34106012	Dado autobloccante M12 PG alto UNI 7473	Self locking nut M12 PG UNI 7473	Selbstsperrendmutter M12 PG UNI 7473	Ecrou autobloquant M12 PG UNI 7473
23	31512025	Vite M12x25x1,75 UNI 5739	Screw M12x25x1,75 UNI 5739	Schraube M12x25x1,75 UNI 5739	Vis M12x25x1,75 UNI 5739
24	31514040	Vite M14x40x2 UNI 5739	Screw M14x40x2 UNI 5739	Schraube M14x40x2 UNI 5739	Vis M14x40x2 UNI 5739
25	4004022	Staffa per fissaggio rullo	Bracket	Pratze	Bride
26	6351004	Spina a "R" ø 4	Split pin "R" ø 4	Splint "R" ø 4	Goupille elastique "R" ø 4
27	4004150	Registro rullo	Register	Einstellschraube	Registre
28	4004030	Asta regolazione coperchio	Adjusting rod	Regulierstange	Tige de réglage
29	6391320	Braccio TP 19,25/320	Arm	Arm	Bras
30	4004149	Compl. tubo registro interno	Telescopic piping	Teleskoprohr	Tube télescopique
31	4834001	Quadro asta regolazione	Frame	Rahmen	Cadre
32	4534002	Distanziale snodo	Spacer	Abstandstuch	Entretoise
33	34120012	Rondella piana ø 12 UNI 6592	Washer ø 12 UNI 6592	Scheibe ø 12 UNI 6592	Rondelle ø 12 UNI 6592
34	34121012	Rondella grower ø 12 UNI 1751	Washer ø 12 UNI 1751	Scheibe ø 12 UNI 1751	Rondelle ø 12 UNI 1751
35	31314090	Vite M14x90x2 UNI 5737	Screw M14x90x2 UNI 5737	Schraube M14x90x2 UNI 5737	Vis M14x90x2 UNI 5737
36	34120014	Rondella piana ø 14 UNI 6592	Washer ø 14 UNI 6592	Scheibe ø 14 UNI 6592	Rondelle ø 14 UNI 6592
37	34106014	Dado autobloccante M14 PG alto UNI 7473	Self locking nut M14 PG UNI 7473	Selbstsperrendmutter M14 PG UNI 7473	Ecrou autobloquant M14 PG UNI 7473
38	4004311	Coperchio premicofano tipo "C" RG-230 DX	Bonnet RG-230 DX	Deckel RG-230 DX	Capot RG-230 DX
38	4004312	Coperchio premicofano tipo "C" RG-255 DX	Bonnet RG-255 DX	Deckel RG-255 DX	Capot RG-255 DX
38	4004313	Coperchio premicofano tipo "C" RG-280 DX	Bonnet RG-280 DX	Deckel RG-280 DX	Capot RG-280 DX
38	4004314	Coperchio premicofano tipo "C" RG-305 DX	Bonnet RG-305 DX	Deckel RG-305 DX	Capot RG-305 DX
39	4004316	Coperchio premicofano tipo "C" RG-230 SX	Bonnet RG-230 SX	Deckel RG-230 SX	Capot RG-230 SX
39	4004317	Coperchio premicofano tipo "C" RG-255 SX	Bonnet RG-255 SX	Deckel RG-255 SX	Capot RG-255 SX
39	4004318	Coperchio premicofano tipo "C" RG-280 SX	Bonnet RG-280 SX	Deckel RG-280 SX	Capot RG-280 SX
39	4004319	Coperchio premicofano tipo "C" RG-305 SX	Bonnet RG-305 SX	Deckel RG-305 SX	Capot RG-305 SX
40	4004145	Protezione lato esterno	Protection	Schutz	Protection
41	4004029	Piastra per snodo sx	Plate	Platte	Plaque
42	4304003	Perno fissaggio tirante	Pin	Bolzen	Axe
43	4594007	Distanziale rullo a gabbia	Spacer	Abstandstuch	Entretoise
44	4005005	Braccio laterale	Arm	Arm	Bras
45	6560006	Ingrassatore diritto a punta M6x1	Grease nipple M6x1	Schmiernippel M6x1	Graisser M6x1
46	4005126	Telaio rullo attacco laterale RG-230	Frame RG-230	Gestell RG-230	Cadre RG-230
46	4005127	Telaio rullo attacco laterale RG-255	Frame RG-255	Gestell RG-255	Cadre RG-255
46	4005128	Telaio rullo attacco laterale RG-280	Frame RG-280	Gestell RG-280	Cadre RG-280
46	4005129	Telaio rullo attacco laterale RG-305	Frame RG-305	Gestell RG-305	Cadre RG-305
46	4005132	Telaio rullo attacco centrale RG-230	Frame RG-230	Gestell RG-230	Cadre RG-230
46	4005133	Telaio rullo attacco centrale RG-255	Frame RG-255	Gestell RG-255	Cadre RG-255
46	4005134	Telaio rullo attacco centrale RG-280	Frame RG-280	Gestell RG-280	Cadre RG-280
46	4005135	Telaio rullo attacco centrale RG-305	Frame RG-305	Gestell RG-305	Cadre RG-305
47	2000035	Supporto UCF-207	Support	Halterung	Support
48	30210010	Vite M10x10x1,5 UNI 5739	Screw M10x10x1,5 UNI 5739	Schraube M10x10x1,5 UNI 5739	Vis M10x10x1,5 UNI 5739
49	4004144	Protezione lato trasmissione	Protection	Schutz	Protection
50	31614035	Vite M14x35x1,5 UNI 5740	Screw M14x35x1,5 UNI 5740	Schraube M14x35x1,5 UNI 5740	Vis M14x35x1,5 UNI 5740
51	34101014	Dado M14 PF alto UNI 5587	Nut M14 PF UNI 5587	Mutter M14 PF UNI 5587	Ecrou M14 PF UNI 5587
52	34021010	Rondella grower ø 10 UNI 1751	Washer ø 10 UNI 1751	Scheibe ø 10 UNI 1751	Rondelle ø 10 UNI 1751
53	34021014	Rondella grower ø 14 UNI 1751	Washer ø 14 UNI 1751	Scheibe ø 14 UNI 1751	Rondelle ø 14 UNI 1751
54	34000014	Dado M14 PG alto UNI 5587	Nut M14 PG UNI 5587	Mutter M14 PG UNI 5587	Ecrou M14 PG UNI 5587
55	31514035	Vite M14x35x2 UNI 5739	Screw M14x35x2 UNI 5739	Schraube M14x35x2 UNI 5739	Vis M14x35x2 UNI 5739
56	31514030	Vite M14x30x2 UNI 5739	Screw M14x30x2 UNI 5739	Schraube M14x30x2 UNI 5739	Vis M14x30x2 UNI 5739
57	4508702	Catena coperchio 10 maglie	Chian	Kette	Chaîne
58	4302183	Gancio per molla	Hook for spring	Haken für Feder	Crochet pour ressort
59	4212214	Molla ammortizzatore	Spring	Feder	Ressort
60	4004125	Coperchio catena tipo "B" RG-230	Bonnet RG-230	Deckel RG-230	Capot RG-230
60	4004126	Coperchio catena tipo "B" RG-255	Bonnet RG-255	Deckel RG-255	Capot RG-255
60	4004321	Coperchio catena tipo "B" DX RG-280	Bonnet RG-280	Deckel RG-280	Capot RG-280
60	4004322	Coperchio catena tipo "B" DX RG-305	Bonnet RG-305	Deckel RG-305	Capot RG-305
60	4004323	Coperchio catena tipo "B" SX RG-280	Bonnet RG-280	Deckel RG-280	Capot RG-280
60	4004324	Coperchio catena tipo "B" SX RG-305	Bonnet RG-305	Deckel RG-305	Capot RG-305





TAV. 5 - KIT RULLO PAKER + BARRA LIVELLATRICE Mod. RG 230 • 255 • 280 • 305

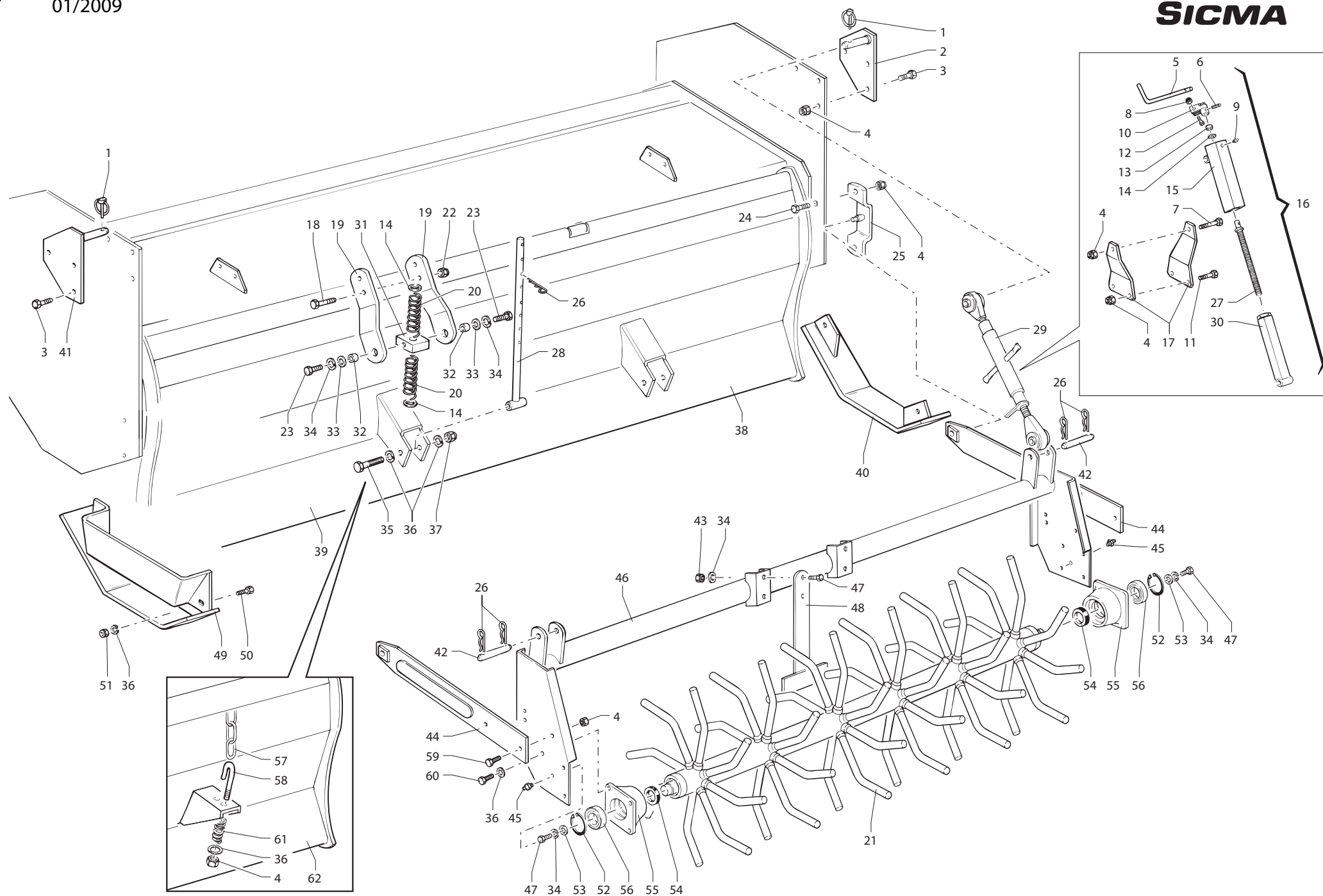
RIF.	CODICE	DENOMINAZIONE	DESCRIPTION	BENENNUNG	DESIGNATION
1	34106008	Dado aut. M8 PG alto UNI 7473	Self locking nut M8 PG UNI 7473	Nutmutter M8 PG UNI 7473	Ecrou autobloquant M8 PG UNI 7473
2	30008040	Vite M8x40x1,25 UNI 5737	Screw M8x40x1,25 UNI 5737	Schraube M8x40x1,25 UNI 5737	Vis M8x40x1,25 UNI 5737
3	4004163	Attacco per manovella	Connection	Verbindung	Attaque
4	6330536	Spina elastica ø 5x36	Split pin ø 5x36	Splint ø 5x36	Goupille elastique ø 5x36
5	6561006	Ingrassatore a 90° M6x1	Grease nipple M6x1	Schmiernipple M6x1	Graisser M6x1
6	4334001	Manovella di registro "RG-SP"	Lever	Gelenkhebel	Manivelle
7	4004158	Compl. tubo registro esterno	Iron pipe	Starres rohr	Tube en fer
8	4304010	Nottolino filettato	Pallet	Zuhaltung	Cliquet
9	4004169	Supporto molla paracolpi	Support	Halterung	Support
10	31514035	Vite M14x35x2 UNI 5739	Screw M14x35x2 UNI 5739	Schraube M14x35x2 UNI 5739	Vis M14x35x2 UNI 5739
11	4004160	Compl. supporto registro dx	Support	Halterung	Support
12	4004164	Compl. registro barra livellatrice dx=sx	Register dx=sx	Einstellschraube dx=sx	Registre dx=sx
13	4134097	Staffa per vite registro	Bracket	Pratze	Bride
14	4004095	Compl. pistone registro cent. + valvola di blocco	Piston	Kolben	Piston
15	34106014	Dado aut. M14 PG alto UNI 7473	Self locking nut M14 PG UNI 7473	Nutmutter M14 PG UNI 7473	Ecrou autobloquant M14 PG UNI 7473
16	4004162	Compl. vite registro	Screw	Schraube	Vis
17	31314090	Vite M14x90x2 UNI 5737	Screw M14x90x2 UNI 5737	Schraube M14x90x2 UNI 5737	Vis M14x90x2 UNI 5737
18	31314050	Vite M14x50x2 UNI 5737	Screw M14x50x2 UNI 5737	Schraube M14x50x2 UNI 5737	Vis M14x50x2 UNI 5737
19	31316130	Vite M16x130x2 UNI 5737	Screw M16x130x2 UNI 5737	Schraube M16x130x2 UNI 5737	Vis M16x130x2 UNI 5737
20	4834002	Braccio regolazione coperchio	Arm	Arm	Bras
21	34118020	Rondella piana ø 20 fascia larga	Washer ø 20	Scheibe ø 20	Rondelle ø 20
22	34106012	Dado aut. M12 PG alto UNI 7473	Self locking nut M12 PG UNI 7473	Nutmutter M12 PG UNI 7473	Ecrou autobloquant M12 PG UNI 7473
23	31314060	Vite M14x60x2 UNI 5737	Screw M14x60x2 UNI 5737	Schraube M14x60x2 UNI 5737	Vis M14x60x2 UNI 5737
24	4834003	Staffa fissaggio rullo	Bracket	Pratze	Bride
25	31316120	Vite M16x120x2 UNI 5737	Screw M16x120x2 UNI 5737	Schraube M16x120x2 UNI 5737	Vis M16x120x2 UNI 5737
26	4534002	Distanziale per snodo	Spacer	Abstandstüch	Entretroise
27	34120012	Rondella piana ø 12 UNI 6592	Washer ø 12 UNI 6592	Scheibe ø 12 UNI 6592	Rondelle ø 12 UNI 6592
28	34121012	Rondella grower ø 12 UNI 1751	Washer ø 12 UNI 1751	Scheibe ø 12 UNI 1751	Rondelle ø 12 UNI 1751
29	6351004	Spina a "R" ø 4	Split pin ø 4	Splint ø 4	Goupille ø 4
30	31312050	Vite M12x50x1,75 UNI 5737	Screw M12x50x1,75 UNI 5737	Schraube M12x50x1,75 UNI 5737	Vis M12x50x1,75 UNI 5737
31	4304003	Perno fissaggio tirante	Pin	Bolzen	Axe
32	4214005	Molla paracolpi	Spring	Feder	Ressort
33	4784000	Lettore di profondità	Depth indicator	Tiefenanzeige	Indicateur de profondeur
34	34121014	Rondella grower ø 14 UNI 1751	Washer ø 14 UNI 1751	Scheibe ø 14 UNI 1751	Rondelle ø 14 UNI 1751
35	DG005005	Braccio laterale Rullo Pakar	Arm	Arm	Bras
36	4834001	Quadro asta regolazione	Frame	Rahmen	Cadre
37	DG005006	Compl. attacco Rullo Pakar	Connection	Verbindung	Attaque
38	31314060	Vite M14x60x2 UNI 5737	Screw M14x60x2 UNI 5737	Schraube M14x60x2 UNI 5737	Vis M14x60x2 UNI 5737
39	31514025	Vite M12x25x1,75 UNI 5739	Screw M12x25x1,75 UNI 5739	Schraube M12x25x1,75 UNI 5739	Vis M12x25x1,75 UNI 5739
40	4784001	Tampone in gomma	Bumper	Puffer	Tampon
41	4004159	Compl. tubo registro interno	Iron pipe	Starres rohr	Tube en fer
42	4004113	Coperchio post. premicofano tipo "C" RG-230 DX	Bonnet RG-230 DX	Deckel RG-230 DX	Capot RG-230 DX
42	4004114	Coperchio post. premicofano tipo "C" RG-255 DX	Bonnet RG-255 DX	Deckel RG-255 DX	Capot RG-255 DX
42	4004115	Coperchio post. premicofano tipo "C" RG-280 DX	Bonnet RG-280 DX	Deckel RG-280 DX	Capot RG-280 DX
42	4004116	Coperchio post. premicofano tipo "C" RG-305 DX	Bonnet RG-305 DX	Deckel RG-305 DX	Capot RG-305 DX
43	4004117	Coperchio post. premicofano tipo "C" RG-230 SX	Bonnet RG-230 SX	Deckel RG-230 SX	Capot RG-230 SX
43	4004118	Coperchio post. premicofano tipo "C" RG-255 SX	Bonnet RG-255 SX	Deckel RG-255 SX	Capot RG-255 SX
43	4004119	Coperchio post. premicofano tipo "C" RG-280 SX	Bonnet RG-280 SX	Deckel RG-280 SX	Capot RG-280 SX
43	4004120	Coperchio post. premicofano tipo "C" RG-305 SX	Bonnet RG-305 SX	Deckel RG-305 SX	Capot RG-305 SX
44	31314080	Vite M14x80x2 UNI 5737	Screw M14x80x2 UNI 5737	Schraube M14x80x2 UNI 5737	Vis M14x80x2 UNI 5737
45	4214577	Molla coperchio paraterra	Spring	Feder	Ressort
46	4004030	Compl. asta regolazione coperchio	Adjusting rod	Regulierstange	Tige de réglage
47	4004161	Compl. supporto registro sx	Support	Halterung	Support
48	4534009	Boccola distanziale braccio laterale	Bushing	Büchse	Douille
49	DG0050062	Fascetta tubo quadro	Clamp	Klemmschelle	Collier
50	34121016	Rondella grower ø 16 UNI 1751	Washer ø 16 UNI 1751	Scheibe ø 16 UNI 1751	Rondelle ø 16 UNI 1751
51	4004152	Compl. barra livellatrice RG-230	Bar RG-230	Stange RG-230	Barre RG-230
51	4004153	Compl. barra livellatrice RG-255	Bar RG-255	Stange RG-255	Barre RG-255
51	4004154	Compl. barra livellatrice RG-280	Bar RG-280	Stange RG-280	Barre RG-280
51	4004155	Compl. barra livellatrice RG-305	Bar RG-305	Stange RG-305	Barre RG-305
52	4004144	Compl. protezione carter trasm.	Protection	Schutz	Protection
53	4004145	Compl. protezione esterna	Protection	Schutz	Protection
54	34107014	Dado aut. M14 PF alto	Self locking nut M14 PF	Nutmutter M14 PF	Ecrou autobloquant M14 PF
55	34120014	Rondella piana ø 14 UNI 6592	Washer ø 14 UNI 6592	Scheibe ø 14 UNI 6592	Rondelle ø 14 UNI 6592
56	31614035	Vite M14x35x1,5 UNI 5740	Screw M14x35x1,5 UNI 5740	Schraube M14x35x1,5 UNI 5740	Vis M14x35x1,5 UNI 5740
57	34102016	Dado M16 PG medio UNI 5587	Nut M16 PG UNI 5587	Mutter M16 PG UNI 5587	Ecrou M16 PG UNI 5587
58	34106016	Dado aut. M16 PG alto UNI 7473	Self locking nut M16 PG UNI 7473	Nutmutter M16 PG UNI 7473	Ecrou autobloquant M16 PG UNI 7473
59	30216040	Vite M16x40x2 UNI 5739	Screw M16x40x2 UNI 5739	Schraube M16x40x2 UNI 5739	Vis M16x40x2 UNI 5739
60	DGA23015	Supporto rullo RG-230	Roller support RG-230	Rollenträger RG-230	Support rouleau RG-230
60	DGA25015	Supporto rullo RG-255	Roller support RG-255	Rollenträger RG-255	Support rouleau RG-255
60	DGA28015	Supporto rullo RG-280	Roller support RG-280	Rollenträger RG-280	Support rouleau RG-280
60	DGA30015	Supporto rullo RG-305	Roller support RG-305	Rollenträger RG-305	Support rouleau RG-305
61	34000012	Dado M12x1,75 UNI 5587	Nut M12x1,75 UNI 5587	Mutter M12x1,75 UNI 5587	Ecrou M12x1,75 UNI 5587
62	34020012	Rondella piana ø 12 UNI 6592	Washer ø 12 UNI 6592	Scheibe ø 12 UNI 6592	Rondelle ø 12 UNI 6592
63	6200037	Coperchio chiusura supporto	Bonnet	Deckel	Capot
64	30206016	Vite M6x16x1 UNI 5739	Screw M6x16x1 UNI 5739	Schraube M6x16x1 UNI 5739	Vis M6x16x1 UNI 5739
65	30214045	Vite M14x45x2 UNI 5739	Screw M14x45x2 UNI 5739	Schraube M14x45x2 UNI 5739	Vis M14x45x2 UNI 5739
66	6560006	Ingrassatore a punta M6x1	Grease nipple M6x1	Schmiernipple M6x1	Graisser M6x1
67	30216050	Vite M16x50x2 UNI 5739	Screw M16x50x2 UNI 5739	Schraube M16x50x2 UNI 5739	Vis M16x50x2 UNI 5739
68	DG0000163	Supporto laterale dx	Support	Halterung	Support
69	2000040	Supporto UCF-208	Support UCF-208	Halterung UCF-208	Support UCF-208
70	34127030	Ghiera autobloccante M30 PF	Plug M30 PF	Gewinding M30 PF	Virole M30 PF
71	34020016	Rondella piana ø 16 fascia larga	Washer ø 16	Scheibe ø 16	Rondelle ø 16

TAV. 5 - KIT RULLO PAKER + BARRA LIVELLATRICE Mod. RG 230 • 255 • 280 • 305

RIF.	CODICE	DENOMINAZIONE	DESCRIPTION	BENENNUNG	DESIGNATION
72	DG000116	Raschiarullo laterale dx	Scraper	Schrapper	Râclette
73	DG000115	Gancio regolazione raschiarullo	Hook	Haken	Crochet
74	DG235013	Rullo Paker RG-230	Roller RG-230	Rolle RG-230	Rouleau RG-230
74	DGA00013	Rullo Paker RG-255	Roller RG-255	Rolle RG-255	Rouleau RG-255
74	DGA2800	Rullo Paker RG-280	Roller RG-280	Rolle RG-280	Rouleau RG-280
74	DGA3000	Rullo Paker RG-305	Roller RG-305	Rolle RG-305	Rouleau RG-305
75	DGA23014	Raschiarullo RG-230	Scraper RG-230	Schrapper RG-230	Râclette RG-230
75	DGA000014	Raschiarullo RG-255	Scraper RG-255	Schrapper RG-255	Râclette RG-255
75	DGA28014	Raschiarullo RG-280	Scraper RG-280	Schrapper RG-280	Râclette RG-280
75	DGA30014	Raschiarullo RG-305	Scraper RG-305	Schrapper RG-305	Râclette RG-305
76	DGA000090	Raschietto	Scraper	Abstreifer	Racleur
77	33010030	Vite testa tonda M10x30x1,5 UNI 5731	Screw M10x30x1,5 UNI 5731	Schraube M10x30x1,5 UNI 5731	Vis M10x30x1,5 UNI 5731
78	DG000117	Raschiarullo laterale dx	Scraper	Schrapper	Râclette
79	DG0000162	Supporto laterale Sx	Support	Halterung	Support

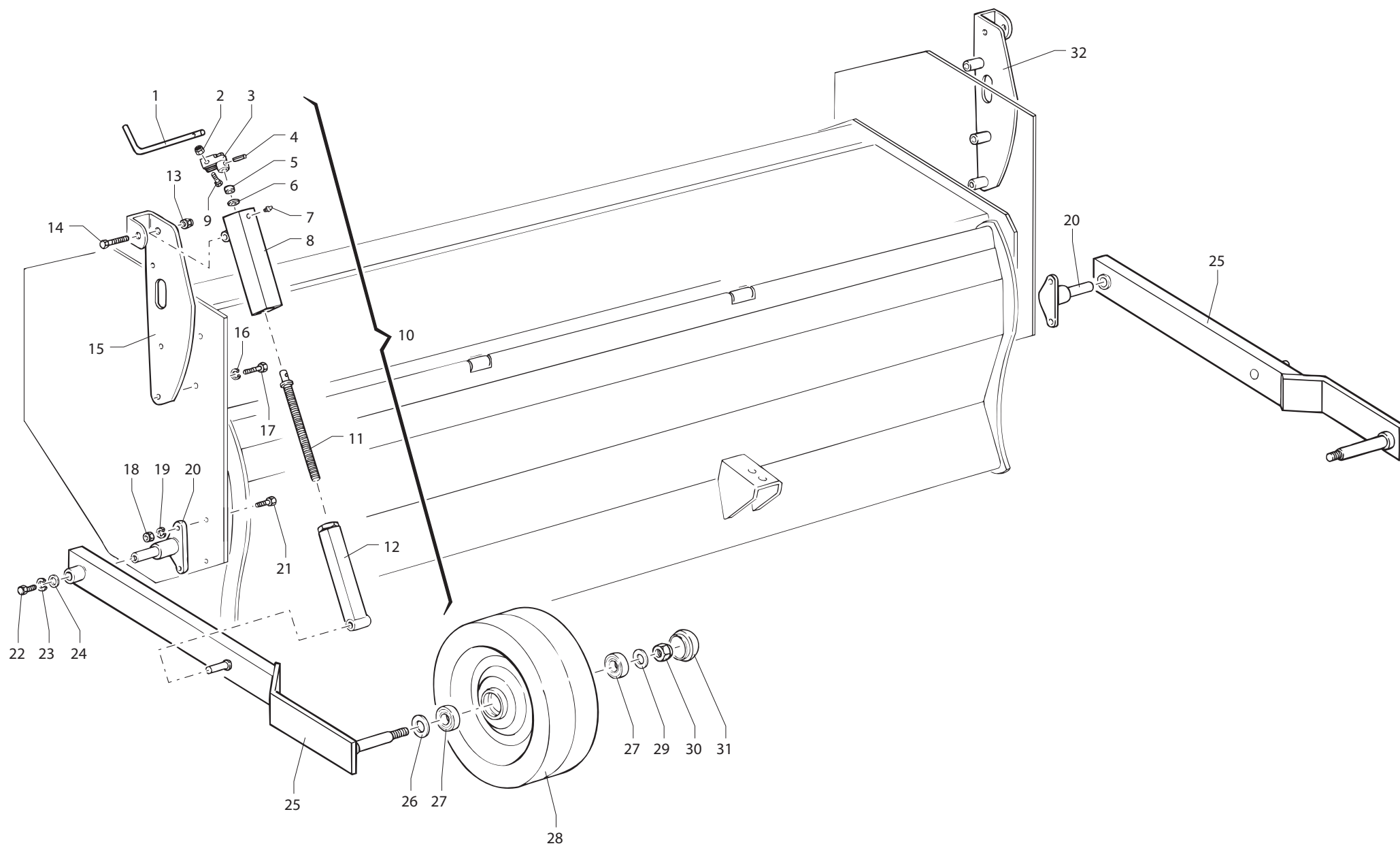
TAV. 6 - MARTINETTO REGOLAZIONE CENTRALE

RIF.	CODICE	DENOMINAZIONE	DESCRIPTION	BENENNUNG	DESIGNATION
1	6237208	Vite forata BSPP 3/8"	Screw BSPP 3/8"	Schraube BSPP 3/8"	Vis BSPP 3/8"
2	6470038	Rondella in rame 3/8"	Washer 3/8"	Scheibe 3/8"	Rondelle 3/8"
3	6420104	Nipples MM 3/8"	Nipple MM 3/8"	Nipple MM 3/8"	Nipple MM 3/8"
4	6460038	Valvola di blocco D.E. 3/8"	Valve D.E. 3/8"	Ventil D.E. 3/8"	Soupape D.E. 3/8"
5	6424038	Raccordo filettato diritto 3/8"	Pipe fitting 3/8"	Rohrverbindung 3/8"	Raccord de tuyau 3/8"
6	6420038	Occhio a saldare BSPP 3/8"	Eye nipple BSPP 3/8"	Auge BSPP 3/8"	Raccord BSPP 3/8"
7	4534008	Tubo valvola di blocco	Hose	Schlauch	Tuyau
8	4004079	Compl. camicia reg. centrale	Cylinder	Zylinder	Cylindre
9	34005018	Dado M18 P1,5 basso UNI 5587	Nut M18 P1,5 UNI 5587	Mutter M18 P1,5 UNI 5587	Ecrou M18 P1,5 UNI 5587
10	6838283	Guarnizione DBM 196133	Seal DBM 196133	Dichtung DBM 196133	Garniture DBM 196133
11	5202373	Pistone porta guarnizione	Piston	Kolben	Piston
12	6836617	Guarnizione O.R. 617 2,62x17,86	O.Ring 617 2,62x17,86	O.Ring 617 2,62x17,86	Bague d'étanchéité 617 2,62x17,86
13	6838029	Guarnizione B. 129098/1	Seal B. 129098/1	Dichtung B. 129098/1	Garniture B. 129098/1
14	6836120	Guarnizione O.R. 120 2,62x25x30	O.Ring 120 2,62x25x30	O.Ring 120 2,62x25x30	Bague d'étanchéité 120 2,62x25x30
15	5242372	Ghiera	Plug	Gewinding	Virole
16	4004039	Compl. stelo ø 25	Rod ø 25	Stange ø 25	Tige ø 25
17	6836827	Guarnizione O.R. 827 3,53x44,5	O.Ring 827 3,53x44,5	O.Ring 827 3,53x44,5	Bague d'étanchéité 827 3,53x44,5
18	6038325	Guarnizione W.R.M. 098129	Seal W.R.M. 098129	Dichtung W.R.M. 098129	Garniture W.R.M. 098129
19	6310053	Seeger I ø 53	Circlip I ø 53	Seegersicherung I ø 53	Bague d'arrêt I ø 53
20	4004087	Compl. valvola di blocco D.E. 3/8"	Valve D.E. 3/8"	Ventil D.E. 3/8"	Soupape D.E. 3/8"
21	4004069	Compl. pistone reg. centrale rullo	Piston	Kolben	Piston
22	34100010	Dado M10 PG alto UNI 5587	Nut M10 PG UNI 5587	Mutter M10 PG UNI 5587	Ecrou M10 PG UNI 5587
23	34121010	Rondella grower ø 10 UNI 1751	Washer ø 10 UNI 1751	Scheibe ø 10 UNI 1751	Rondelle ø 10 UNI 1751
24	31510030	Vite M10x30x1,5 UNI 5739 T.F.	Screw M10x30x1,5 UNI 5739 T.F.	Schraube M10x30x1,5 UNI 5739 T.F.	Vis M10x30x1,5 UNI 5739 T.F.
25	64122170	Tubo gomma C.D. 3/8" L=1700 RG-230*255	Hose C.D. 3/8" L=1700 RG-230*255	Schlauch C.D. 3/8" L=1700 RG-230*255	Tuyau C.D. 3/8" L=1700 RG-230*255
25	64122200	Tubo gomma C.D. 3/8" L=2000 RG-280*305	Hose C.D. 3/8" L=2000 RG-280*305	Schlauch C.D. 3/8" L=2000 RG-280*305	Tuyau C.D. 3/8" L=2000 RG-280*305
26	64122150	Tubo gomma C.D. 3/8" L=1500	Hose C.D. 3/8" L=1500	Schlauch C.D. 3/8" L=1500	Tuyau C.D. 3/8" L=1500
27	6420411	Nipples riduzione M 3/8" M 1/4"	Nipple M 3/8" M 1/4"	Nipple M 3/8" M 1/4"	Nipple M 3/8" M 1/4"
28	6470014	Rondella in rame 1/4"	Washer 1/4"	Scheibe 1/4"	Rondelle 1/4"
29	5003048	Complessivo distributore	Control valve	Steuerblock	Distributeur
30	6470012	Rondella in rame 1/2"	Washer 1/2"	Scheibe 1/2"	Rondelle 1/2"
31	6420424	Nipples riduzione M 1/2" M 3/8"	Nipple M 1/2" M 3/8"	Nipple M 1/2" M 3/8"	Nipple M 1/2" M 3/8"
32	6037683	Innesto rapido	Quick release	Schnellverschluß	Joint d'étanchéité



TAV. 7 - RULLO A SPUNTONE RG-230 • 255 • 280 • 305

RIF.	CODICE	DENOMINAZIONE	DESCRIPTION	BENENNUNG	DESIGNATION
1	6331058	Spina a scatto ø 10x58	Linch pin ø 10x58	Klappsplint ø 10x58	Goujon de sûreté ø 10x58
2	4004028	Piastra per snodo dx	Plate	Platte	Plaque
3	31514040	Vite M14x40x2 UNI 5739	Screw M14x40x2 UNI 5739	Schraube M14x40x2 UNI 5739	Vis M14x40x2 UNI 5739
4	34106014	Dado autobloccante M14 PG alto UNI 7473	Self locking nut M14 PG UNI 7473	Selbstsperrendmutter M14 PG UNI 7473	Ecrou autobloquant M14 PG UNI 7473
5	4334001	Manovella di registro "RG-SP"	Lever	Gelenkhebel	Manivelle
6	6330536	Spina elastica ø 5x36	Split pin ø 5x36	Splint ø 5x36	Goupille elastique ø 5x36
7	31314085	Vite M14x85x2 UNI 5737	Screw M14x85x2 UNI 5737	Schraube M14x85x2 UNI 5737	Vis M14x85x2 UNI 5737
8	34106008	Dado autobloccante M8 PG alto UNI 7473	Self locking nut M8 PG UNI 7473	Selbstsperrendmutter M8 PG UNI 7473	Ecrou autobloquant M8 PG UNI 7473
9	6561006	Ingrassatore a 90° M6x1	Grease nipple M6x1	Schmiernippel M6x1	Graisseur M6x1
10	4005303	Attacco per manovella	Connection	Verbindung	Attaque
11	31514050	Vite M14x50x2 UNI 5739	Screw M14x50x2 UNI 5739	Schraube M14x50x2 UNI 5739	Vis M14x50x2 UNI 5739
12	30008040	Vite M8x40x1,25 UNI 5737	Screw M8x40x1,25 UNI 5737	Schraube M8x40x1,25 UNI 5737	Vis M8x40x1,25 UNI 5737
13	4333039	Boccola	Bushing	Büchse	Douille
14	34120020	Rondella piana ø 20 UNI 6592	Washer ø 20 UNI 6592	Scheibe ø 20 UNI 6592	Rondelle ø 20 UNI 6592
15	4004148	Compl. tubo registro interno	Telescopic piping	Teleskoprohr	Tube télescopique
16	4004147	Registro rullo	Register	Einstellschraube	Registre
17	4134097	Staffa per registro rullo	Bracket	Pratze	Bride
18	31312050	Vite M12x50x1,75 UNI 5739	Screw M12x50x1,75 UNI 5739	Schraube M12x50x1,75 UNI 5739	Vis M12x50x1,75 UNI 5739
19	4834002	Braccio regolazione coperchio	Arm	Arm	Bras
20	4214577	Molla coperchio	Spring	Feder	Ressort
21	4005412	Rullo a spuntone RG-230	Spike roller RG-230	Zahnwalze RG-230	Rouleau à dents RG-230
21	4005413	Rullo a spuntone RG-255	Spike roller RG-255	Zahnwalze RG-255	Rouleau à dents RG-255
21	4005414	Rullo a spuntone RG-280	Spike roller RG-280	Zahnwalze RG-280	Rouleau à dents RG-280
21	4005415	Rullo a spuntone RG-305	Spike roller RG-305	Zahnwalze RG-305	Rouleau à dents RG-305
22	34106012	Dado autobloccante M12 PG alto UNI 7473	Self locking nut M12 PG UNI 7473	Selbstsperrendmutter M12 PG UNI 7473	Ecrou autobloquant M12 PG UNI 7473
23	31512025	Vite M12x25x1,75 UNI 5739	Screw M12x25x1,75 UNI 5739	Schraube M12x25x1,75 UNI 5739	Vis M12x25x1,75 UNI 5739
24	31514040	Vite M14x40x2 UNI 5739	Screw M14x40x2 UNI 5739	Schraube M14x40x2 UNI 5739	Vis M14x40x2 UNI 5739
25	4004022	Staffa per fissaggio rullo	Bracket	Pratze	Bride
26	6351004	Spina a "R" ø 4	Split pin "R" ø 4	Splint "R" ø 4	Goupille elastique "R" ø 4
27	4004150	Registro rullo	Register	Einstellschraube	Registre
28	4004030	Asta regolazione coperchio	Adjusting rod	Regulierstange	Tige de réglage
29	6391320	Braccio TP 19,25/320	Arm	Arm	Bras
30	4004149	Compl. tubo registro interno	Telescopic piping	Teleskoprohr	Tube télescopique
31	4834001	Quadro asta regolazione	Frame	Rahmen	Cadre
32	4534002	Distanziale snodo	Spacer	Abstandstuch	Entretoise
33	34120012	Rondella piana ø 12 UNI 6592	Washer ø 12 UNI 6592	Scheibe ø 12 UNI 6592	Rondelle ø 12 UNI 6592
34	34121012	Rondella grower ø 12 UNI 1751	Washer ø 12 UNI 1751	Scheibe ø 12 UNI 1751	Rondelle ø 12 UNI 1751
35	31314090	Vite M14x90x2 UNI 5737	Screw M14x90x2 UNI 5737	Schraube M14x90x2 UNI 5737	Vis M14x90x2 UNI 5737
36	34120014	Rondella piana ø 14 UNI 6592	Washer ø 14 UNI 6592	Scheibe ø 14 UNI 6592	Rondelle ø 14 UNI 6592
37	34106014	Dado autobloccante M14 PG alto UNI 7473	Self locking nut M14 PG UNI 7473	Selbstsperrendmutter M14 PG UNI 7473	Ecrou autobloquant M14 PG UNI 7473
38	4004311	Coperchio premicofano tipo "C" RG-230 DX	Bonnet RG-230 DX	Deckel RG-230 DX	Capot RG-230 DX
38	4004312	Coperchio premicofano tipo "C" RG-255 DX	Bonnet RG-255 DX	Deckel RG-255 DX	Capot RG-255 DX
38	4004313	Coperchio premicofano tipo "C" RG-280 DX	Bonnet RG-280 DX	Deckel RG-280 DX	Capot RG-280 DX
38	4004314	Coperchio premicofano tipo "C" RG-305 DX	Bonnet RG-305 DX	Deckel RG-305 DX	Capot RG-305 DX
39	4004316	Coperchio premicofano tipo "C" RG-230 SX	Bonnet RG-230 SX	Deckel RG-230 SX	Capot RG-230 SX
39	4004317	Coperchio premicofano tipo "C" RG-255 SX	Bonnet RG-255 SX	Deckel RG-255 SX	Capot RG-255 SX
39	4004318	Coperchio premicofano tipo "C" RG-280 SX	Bonnet RG-280 SX	Deckel RG-280 SX	Capot RG-280 SX
39	4004319	Coperchio premicofano tipo "C" RG-305 SX	Bonnet RG-305 SX	Deckel RG-305 SX	Capot RG-305 SX
40	4004145	Protezione lato esterno	Protection	Schutz	Protection
41	4004029	Piastra per snodo sx	Plate	Platte	Plaque
42	4304003	Perno fissaggio tirante	Pin	Bolzen	Axe
43	34000012	Dado M12 PG alto UNI 5587	Nut M12 PG UNI 5587	Mutter M12 PG UNI 5587	Ecrou M12 PG UNI 5587
44	4005001	Braccio laterale	Arm	Arm	Bras
45	6560010	Ingrassatore a punta M10x1,5 diritto	Grease nipple M10x1,5	Schmiernippel M10x1,5	Graisseur M10x1,5
46	4005112	Telaio rullo attacco laterale RG-230	Frame RG-230	Gestell RG-230	Cadre RG-230
46	4005113	Telaio rullo attacco laterale RG-255	Frame RG-255	Gestell RG-255	Cadre RG-255
46	4005114	Telaio rullo attacco laterale RG-280	Frame RG-280	Gestell RG-280	Cadre RG-280
46	4005115	Telaio rullo attacco laterale RG-305	Frame RG-305	Gestell RG-305	Cadre RG-305
46	4005180	Telaio rullo attacco centrale RG-230	Frame RG-230	Gestell RG-230	Cadre RG-230
46	4005181	Telaio rullo attacco centrale RG-255	Frame RG-255	Gestell RG-255	Cadre RG-255
46	4005182	Telaio rullo attacco centrale RG-280	Frame RG-280	Gestell RG-280	Cadre RG-280
46	4005183	Telaio rullo attacco centrale RG-305	Frame RG-305	Gestell RG-305	Cadre RG-305
47	30212030	Vite M12x30x1,75 UNI 5739	Screw M12x30x1,75 UNI 5739	Schraube M12x30x1,75 UNI 5739	Vis M12x30x1,75 UNI 5739
48	4005017	Raschiarullo	Scraper	Schrapper	Râclette
49	4004144	Protezione lato trasmissione	Protection	Schutz	Protection
50	31614035	Vite M14x35x1,5 UNI 5740	Screw M14x35x1,5 UNI 5740	Schraube M14x35x1,5 UNI 5740	Vis M14x35x1,5 UNI 5740
51	34101014	Dado M14 PF alto UNI 5587	Nut M14 PF UNI 5587	Mutter M14 PF UNI 5587	Ecrou M14 PF UNI 5587
52	6320035	Seeger per esterno ø 35	Circlip ø 35	Seegersicherung ø 35	Bague d'arrêt ø 35
53	34118012	Rondella piana ø 12x40 UNI 6593	Washer ø 12x40 UNI 6593	Scheibe ø 12x40 UNI 6593	Rondelle ø 12x40 UNI 6593
54	6204200	Gruppo GNL MF.4200	Oil seal GNL MF.4200	Oelabdichtung GNL MF.4200	Pare-huile GNL MF.4200
55	4705001	Supporto cuscinetto	Support	Halterung	Support
56	2106207	Cuscinetto 6207	Bearing 6207	Lager 6207	Roulement 6207
57	4508702	Catena coperchio 10 maglie	Chian	Kette	Chaîne
58	4302183	Gancio per molla	Hook for spring	Haken für Feder	Crochet pour ressort
59	31514035	Vite M14x35x2 UNI 5739	Screw M14x35x2 UNI 5739	Schraube M14x35x2 UNI 5739	Vis M14x35x2 UNI 5739
60	31514030	Vite M14x30x2 UNI 5739	Screw M14x30x2 UNI 5739	Schraube M14x30x2 UNI 5739	Vis M14x30x2 UNI 5739
61	4212214	Molla ammortizzatore	Spring	Feder	Ressort
62	4004125	Coperchio catena tipo "B" RG-230	Bonnet RG-230	Deckel RG-230	Capot RG-230
62	4004126	Coperchio catena tipo "B" RG-255	Bonnet RG-255	Deckel RG-255	Capot RG-255
62	4004321	Coperchio catena tipo "B" DX RG-280	Bonnet RG-280	Deckel RG-280	Capot RG-280
62	4004322	Coperchio catena tipo "B" DX RG-305	Bonnet RG-305	Deckel RG-305	Capot RG-305
62	4004323	Coperchio catena tipo "B" SX RG-280	Bonnet RG-280	Deckel RG-280	Capot RG-280
62	4004324	Coperchio catena tipo "B" SX RG-305	Bonnet RG-305	Deckel RG-305	Capot RG-305



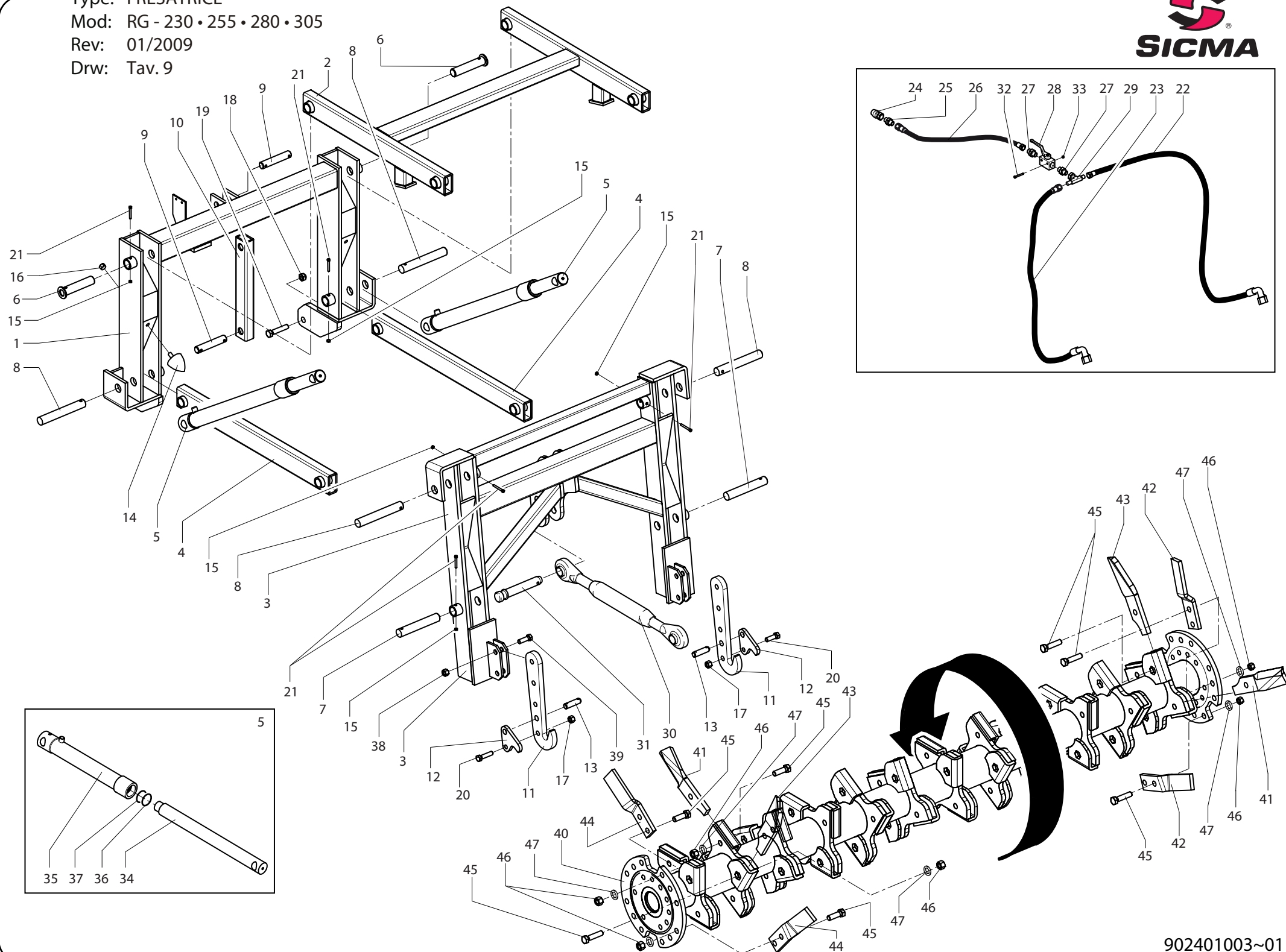
TAV. 8 - KIT RUOTE LATERALI RG

RIF.	CODICE	DENOMINAZIONE	DESCRIPTION	BENENNUNG	DESIGNATION
1	4334001	Manovella di registro	Lever	Gelenkhebel	Manivelle
2	34106008	Dado autobloc. M8 PG alto	Self locking nut M8 PG	Selbstsperrendmutter M8 PG	Ecrou autobloquant M8 PG
3	4005303	Attacco per manovella	Connection	Verbindung	Attaque
4	6335030	Spina elastica ø 5x30	Split pin ø 5x30	Splint ø 5x30	Goupille elastique ø 5x30
5	4333039	Boccola distanziale	Bushing	Büchse	Douille
6	34118020	Rondella piana ø 20/36 fascia larga	Washer ø 20/36	Scheibe ø 20/36	Rondelle ø 20/36
7	6561006	Ingrassatore M6 90°	Grease nipple M6	Schmiernippel M6	Graisser M6
8	4005353	Tubo esterno di registro	Iron pipe	Starres rohr	Tube en fer
9	31308045	Vite M8x1,25x45 UNI 5737	Screw M8x1,25x45 UNI 5737	Schraube M8x1,25x45 UNI 5737	Vis M8x1,25x45 UNI 5737
10	4005356	Complessivo registro ruotino	Register	Einstellschraube	Registre
11	4005350	Complessivo vite	Screw	Schraube	Vis
12	4005351	Tubo interno di registro	Iron pipe	Starres rohr	Tube en fer
13	34106014	Dado autobloc. M14 PG alto	Self locking nut M14 PG	Selbstsperrendmutter M14 PG	Ecrou autobloquant M14 PG
14	31314090	Vite M14x2x90 UNI 5737	Screw M14x2x90 UNI 5737	Schraube M14x2x90 UNI 5737	Vis M14x2x90 UNI 5737
15	4005309	Piastra di guida e supp. registro sx	Plate	Platte	Plaque
16	34121014	Rondella grower ø 14 UNI 1751	Washer ø 14 UNI 1751	Scheibe ø 14 UNI 1751	Rondelle ø 14 UNI 1751
17	31514040	Vite M14x2x40 UNI 5739	Screw M14x2x40 UNI 5739	Schraube M14x2x40 UNI 5739	Vis M14x2x40 UNI 5739
18	34106014	Dado M14 PG alto UNI 5587	Nut M14 PG UNI 5587	Mutter M14 PG UNI 5587	Ecrou M14 PG UNI 5587
19	34121014	Rondella grower ø 14 UNI 1751	Washer ø 14 UNI 1751	Scheibe ø 14 UNI 1751	Rondelle ø 14 UNI 1751
20	4005320	Piastra attacco ruota	Plate	Platte	Plaque
21	31314055	Vite M14x2x55 UNI 5737	Screw M14x2x55 UNI 5737	Schraube M14x2x55 UNI 5737	Vis M14x2x55 UNI 5737
22	31512030	Vite M12x1,75x30 UNI 5739	Screw M12x1,75x30 UNI 5739	Schraube M12x1,75x30 UNI 5739	Vis M12x1,75x30 UNI 5739
23	34121012	Rondella grower ø 12 UNI 1751	Washer ø 12 UNI 1751	Scheibe ø 12 UNI 1751	Rondelle ø 12 UNI 1751
24	34118012	Rondella piana ø 12/47 fascia larga	Washer ø 12/47	Scheibe ø 12/47	Rondelle ø 12/47
25	4005317	Braccio ruotino dx=sx	Arm	Arm	Bras
26	4135301	Distanziale ruota RG ø 30x71 Sp.5	Spacer	Abstandstück	Entretoise
27	2226207	Cuscinetto 6207 2RS	Bearing 6207 2RS	Lager 6207 2RS	Roulement 6207 2RS
28	6600500	Ruotino in ferro ø 500x120 Di 72	Wheel	Räd	Roue
29	34120024	Rondella piana ø 24 UNI 6592	Washer ø 24 UNI 6592	Scheibe ø 24 UNI 6592	Rondelle ø 24 UNI 6592
30	34106024	Dado autobloc. M24 PG alto	Self locking nut M24 PG	Selbstsperrendmutter M24 PG	Ecrou autobloquant M24 PG
31	6600072	Coppetta zincata Dm 72	Lock	Verschluss	Fermeture
32	4005310	Piastra di guida e supp. registro dx	Plate	Platte	Plaque

TAV. 8 - KIT RUOTE LATERALI RG

RIF.	CODICE	DENOMINAZIONE	DESCRIPTION	BENENNUNG	DESIGNATION
1	4334001	Manovella di registro	Lever	Gelenkhebel	Manivelle
2	34106008	Dado autobloc. M8 PG alto	Self locking nut M8 PG	Selbstsperrendmutter M8 PG	Ecrou autobloquant M8 PG
3	4005303	Attacco per manovella	Connection	Verbindung	Attaque
4	6335030	Spina elastica ø 5x30	Split pin ø 5x30	Splint ø 5x30	Goupille elastique ø 5x30
5	4333039	Boccola distanziale	Bushing	Büchse	Douille
6	34118020	Rondella piana ø 20/36 fascia larga	Washer ø 20/36	Scheibe ø 20/36	Rondelle ø 20/36
7	6561006	Ingrassatore M6 90°	Grease nipple M6	Schmiernippel M6	Graisseur M6
8	4005353	Tubo esterno di registro	Iron pipe	Starres rohr	Tube en fer
9	31308045	Vite M8x1,25x45 UNI 5737	Screw M8x1,25x45 UNI 5737	Schraube M8x1,25x45 UNI 5737	Vis M8x1,25x45 UNI 5737
10	4005356	Complessivo registro ruotino	Register	Einstellschraube	Registre
11	4005350	Complessivo vite	Screw	Schraube	Vis
12	4005351	Tubo interno di registro	Iron pipe	Starres rohr	Tube en fer
13	34106014	Dado autobloc. M14 PG alto	Self locking nut M14 PG	Selbstsperrendmutter M14 PG	Ecrou autobloquant M14 PG
14	31314090	Vite M14x2x90 UNI 5737	Screw M14x2x90 UNI 5737	Schraube M14x2x90 UNI 5737	Vis M14x2x90 UNI 5737
15	4005309	Piastra di guida e supp. registro sx	Plate	Platte	Plaque
16	34121014	Rondella grower ø 14 UNI 1751	Washer ø 14 UNI 1751	Scheibe ø 14 UNI 1751	Rondelle ø 14 UNI 1751
17	31514040	Vite M14x2x40 UNI 5739	Screw M14x2x40 UNI 5739	Schraube M14x2x40 UNI 5739	Vis M14x2x40 UNI 5739
18	34106014	Dado M14 PG alto UNI 5587	Nut M14 PG UNI 5587	Mutter M14 PG UNI 5587	Ecrou M14 PG UNI 5587
19	34121014	Rondella grower ø 14 UNI 1751	Washer ø 14 UNI 1751	Scheibe ø 14 UNI 1751	Rondelle ø 14 UNI 1751
20	4005320	Piastra attacco ruota	Plate	Platte	Plaque
21	31314055	Vite M14x2x55 UNI 5737	Screw M14x2x55 UNI 5737	Schraube M14x2x55 UNI 5737	Vis M14x2x55 UNI 5737
22	31512030	Vite M12x1,75x30 UNI 5739	Screw M12x1,75x30 UNI 5739	Schraube M12x1,75x30 UNI 5739	Vis M12x1,75x30 UNI 5739
23	34121012	Rondella grower ø 12 UNI 1751	Washer ø 12 UNI 1751	Scheibe ø 12 UNI 1751	Rondelle ø 12 UNI 1751
24	34118012	Rondella piana ø 12/47 fascia larga	Washer ø 12/47	Scheibe ø 12/47	Rondelle ø 12/47
25	4005317	Braccio ruotino dx=sx	Arm	Arm	Bras
26	4135301	Distanziale ruota RG ø 30x71 Sp.5	Spacer	Abstandstück	Entretoise
27	2226207	Cuscinetto 6207 2RS	Bearing 6207 2RS	Lager 6207 2RS	Roulement 6207 2RS
28	6600500	Ruotino in ferro ø 500x120 Di 72	Wheel	Räd	Roue
29	34120024	Rondella piana ø 24 UNI 6592	Washer ø 24 UNI 6592	Scheibe ø 24 UNI 6592	Rondelle ø 24 UNI 6592
30	34106024	Dado autobloc. M24 PG alto	Self locking nut M24 PG	Selbstsperrendmutter M24 PG	Ecrou autobloquant M24 PG
31	6600072	Coppetta zincata Dm 72	Lock	Verschluss	Fermeture
32	4005310	Piastra di guida e supp. registro dx	Plate	Platte	Plaque

Type: FRESATRICE
Mod: RG - 230 • 255 • 280 • 305
Rev: 01/2009
Drw: Tav. 9



902401003~01

TAV. 9 - KIT RG FISSAGGIO SEMINATRICE / ROTORE A LAME

RIF.	CODICE	DENOMINAZIONE	DESCRIPTION	BENENNUN	DESIGNATION
1	4004301	TELAIO FISSO ANT.	FRONT FRAME	VORDERRAHMEN FIX	CADRE ANTERIEUR
2	4004304	TELAIO CENTRALE	CENTRAL FRAME	MITTELRAHMEN	CADRE POSTERIEUR
3	4004305	TELAIO ATTACCO SEMINATRI	REAR FRAME	HINTERRAHMEN	CADRE CENTRAL
4	4004306	TUBO COLLEGAM. INFERIORE	CONNECTING TUBE	UNTERER VERBINDUNGSSCHLAUCH	TUBE LIAISON
5	4004307	CILINDRO SOLLEV. SEMINATRI	PISTON	WINDE	PISTON
6	4004309	PERNO L=143 CON RONDELLA	PIN	BOLZEN	AXE
7	4304305	PERNO D30 L=143 ZINCATO	PIN	BOLZEN	AXE
8	4304303	PERNO D30 L=205	PIN	BOLZEN	AXE
9	4304304	PERNO D25 L=133	PIN	BOLZEN	AXE
10	4524302	TIRANTE 3° PUNTO SUPERIORE	TIE	SPANNSTANGE	TIRANT
11	4934303	PIASTRA AGGANCIO SEMINATRICE	PLATE	PLATTE	PLAQUE
12	4934304	PIASTRA BLOCCAGGIO PERNO	PLATE	PLATTE	PLAQUE
13	5302704	PERNO BRACCIO ATTACCO INF.	PIN	BOLZEN	AXE
14	6786060	PARACOLPI TFGP6060	BUFFER	STOSSFÄNGER	PARE-CHOCECRON
15	3414101008	DADO 6S-8 M 8 P.G. UNI 5587 A	NUT	MUTTER	ECRON
16	3414101012	DADO 6S-8 M12 P.G. UNI 5587 A	NUT	MUTTER	ECRON
17	3414101014	DADO 6S-8 M14 P.G. UNI 5587 A	NUT	MUTTER	ECRON
18	3414102020	DADO 6S-8 M20 P.F. UNI 5587 A	NUT	MUTTER	ECRON
19	3031120080	VITE T.E. 20x80 P.F. UNI 5738	SCREW	SCHRAUBE	VIS
20	3021114045	VITE T.E. 14x45 P.G. UNI 5739	SCREW	SCHRAUBE	VIS
21	3011108050	VITE T.E. 8x50 P.G. UNI 5737	SCREW	SCHRAUBE	VIS
22	64123150	TUBO R1AT 3/8" C+C90° Lg.150	TUBE	SCHLAUCH	TUYAU
23	64123120	TUBO R1AT 3/8" C+C90° Lg.120	TUBE	SCHLAUCH	TUYAU
24	6037683	INNESTO RAPIDO MASCH. 1/2	QUICK RELEASE	SCHNELL VERSCHULUB	JOINT D'ETANCHEITE'
25	6037390	NIPPLE 1/2 - 3/8"	NIPPLES	NIPPLE	NIPPLE
26	64121200	TUBO R1AT 3/8" FD+FD Lg.200	TUBE	SCHLAUCH	TUYAU
27	6420104	NIPPLES DI GIUNZIONE 3/8"	NIPPLES	NIPPLE	NIPPLE
28	6450038	VALVOLA DI BLOCCO A RUBINETTO	VALVE	VENTIL	SOUPAPE
29	6425802	ADATTATORE 3 VIE 3/8" MASC-MASC-F	ADAPTER	FITTING	RACCORD
30	6392340	BRACCIO 3°PUNTO SUP.D25 L34	HAND	ARM	
31	5304435	PERNO 3"P D.25	PIN	BOLZEN	AXE
32	3011105050	VITE TE M5x50 UNI 5737	SCREW	SCHRAUBE	VIS
33	3464101005	DADO ATB M5 7473	NUT	MUTTER	ECRON
34	4424303	STELO D45	ROD	STANGE	TIGE
35	4004308	FODERO D60	CILINDER	ZYLINDER	CYLINDER
36	6038342	RASCHIATORE WRM	SCRAPER	SCHABER	RACLEUR
37	6838045	GUARNIZIONE B	SEAL	DICHTUNG	GARNITURE
38	3011116055	VITE TE M16x55 UNI 5739	SCREW	SCHRAUBE	VIS
39	3474101016	DADO ATB M16 UNI 7474	NUT	MUTTER	ECRON
40	4014302	ROTORE A INNESTO RAPIDO RG/230	ROTOR RG/230	ROTOR	ROTOR
40	4014303	ROTORE A INNESTO RAPIDO RG/255	ROTOR RG/255	ROTOR	ROTOR
40	4014304	ROTORE A INNESTO RAPIDO RG/280	ROTOR RG/280	ROTOR	ROTOR
40	4014305	ROTORE A INNESTO RAPIDO RG/305	ROTOR RG/305	ROTOR	ROTOR
41	4814520	LAMA Dx SICMA 50x15 1 F.	BLADE	WINKELMESSER	COUTEAU
42	4814522	LAMA Dx LATERALE SICMA 50x12 2 F.	BLADE	WINKELMESSER	COUTEAU
43	4814521	LAMA Sx SICMA 50x15 1 F.	BLADE	WINKELMESSER	COUTEAU
44	4814523	LAMA Sx LATERALE SICMA 50x12 2 F.	BLADE	WINKELMESSER	COUTEAU
45	3031116055	VITE TE M16X55 UNI 5738	SCREW	SCHRAUBE	VIS
46	3414102016	DADO M16 UNI 5587	NUT	MUTTER	ECRON
47	3635100016	ROSETTA GROWER FIAT 10188	WASHER	SCHEIBE	RONDELLE