

12/88



RP 15

SPARE PARTS LIST

Instructions for Ordering Spare Parts

Parts illustrated on the following pages are marked with position numbers. The text below the illustration will tell you part number and description. Changed parts are marked with a stroke in front of position number. To avoid errors each order must contain the following details:

Part number and description of parts (stated in the list)

Quantity of parts required

Requested delivery (post, freight, express)

Full address of purchaser (with postal code)

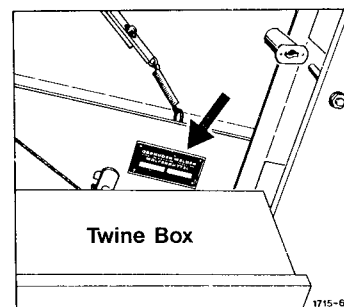
The part numbers listed here have priority over any impressed numbers on parts.

Bolts, nuts, spring washers and washers for mounting complete groups of spare parts are not normally provided in the delivery. If these are required, please give the part number of these fitting parts.

The part number index on the end of the list is for finding parts of which the numbers are known quickly.

Abbreviations:	hex.	=	hexagon
	cpl.	=	complete
	int.	=	interchangeable
	nb	=	as required
	*	=	not illustrated

The Machine number of your baler is stamped into the model data plate shown in the adjoining illustration. As it is essential to quote this number in full in all your enquiries and spare parts orders, we recommend you to note it down in the space below:



Reproduction prohibited.

All rights reserved - Design and construction subject to alterations. Illustrations and technical data are not binding.

Copyright 1988 by Gebrüder Welger GmbH & Co. Kommanditgesellschaft, Wolfenbüttel.

Spare Parts List No. 1715.EE.00.01

F.W. 12.88. 500 000

G E B R Ü D E R W E L G E R G M B H & C O . K O M M A N D I T G E S E L L S C H A F T

Gebrüder-Welger-Straße P.O. Box 1965 D-3340 Wolfenbüttel

Tel.:(5331) 404-0 Teletex:17-5331831 Cables: Welger Wolfenbüttel



Achse

Road Axle – Essieu
Assale – Eje

A

Gestell und Zubehör

Roll Chamber and Accessories – Chambre de Pressage et Accessoires
Telaio ed Accessori – Canal de Prensado y Accesorios

B

Aufsammler

Pick-up Reel – Ramasseur
Raccoglitori – Recogedor

C

Antrieb

Main Drive – Commande
Trasmissione – Transmision

D

Antriebsketten

Drive Chains – Chaînes de Commande
Trasmissione a Catena – Cadenas de Transmision

E

Werkzeug

Tools – Outillage
Accessorio – Herramientas

F

Walzen

Rollers – Rouleaux
Rulli – Rodillos

G

Bindung

Tying Unit – Liage
Legatore – Atador

H

Hydraulikeinrichtung

Hydraulic System – Equipement Hydraulique
Impianto Idraulico – Dispositivo Hidraulico

J

Schutzvorrichtung und Beleuchtung

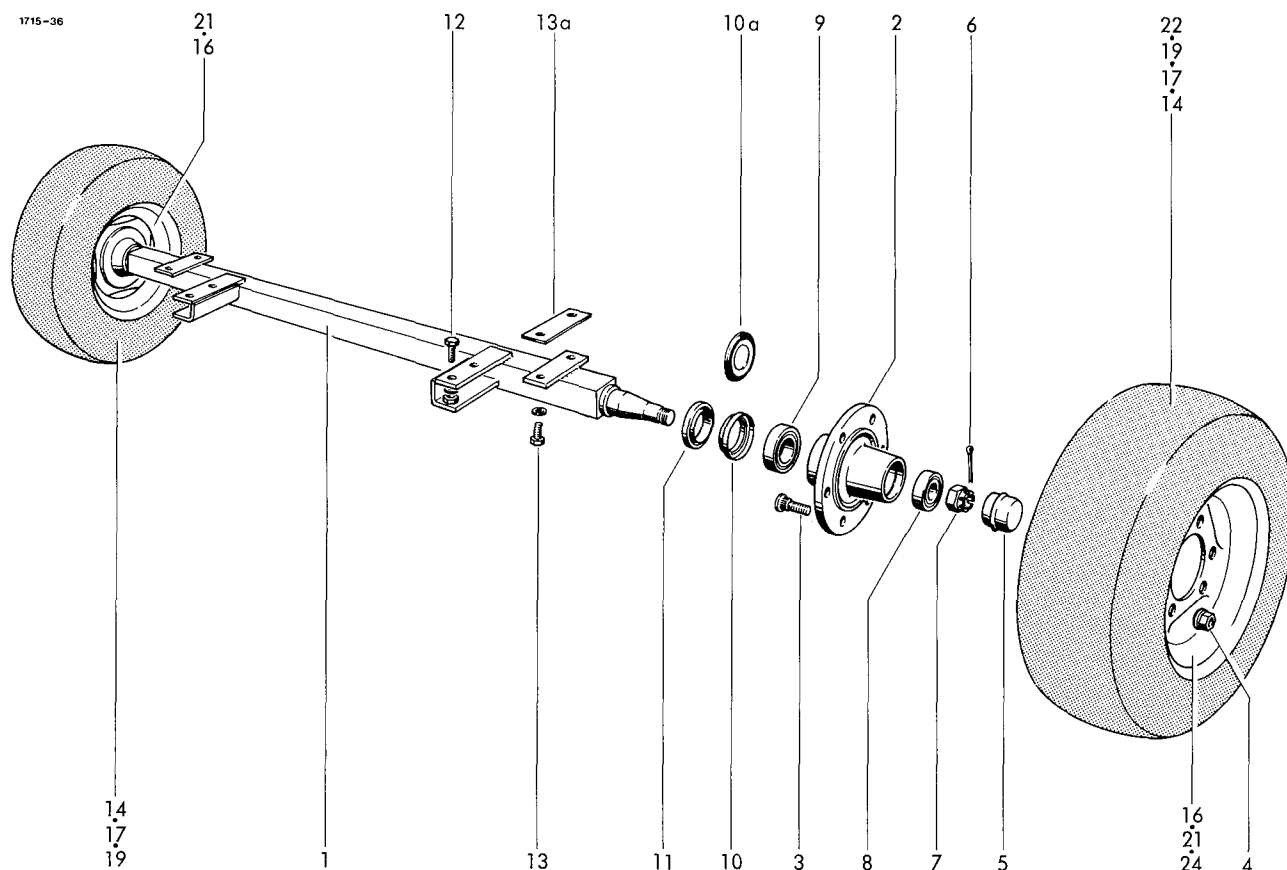
Guards and Lighting Equipment – Protecteurs et Eclairage Electrique
Dispositivi di Protezione ed Illuminazione – Dispositivos de Proteccion y Luces

K

Teilnummern-Verzeichnis

Part-Number Index – Répertoire Numérique des Pièces de Rechange
Indice del Codice – Lista de Numero de Referencias de Piezas

L



AXLE, version A

1-11	0942.10.05.00	axle cpl. 1850
1	0942.30.68.00	axle
2	0942.21.40.00	hub
3	0942.22.89.00	wheel stud
4	0908.88.03.00	wheel nut AM 18
5	0942.24.95.00	wheel cap
6	0916.11.99.00	split pin 4,5x40
7	0908.20.18.00	castle nut M24
8	0942.20.21.00	tap.roller bearing outside
9	0942.20.20.00	tap.roller bearing inside
10	0942.22.65.00	seal
11	0942.22.28.00	support ring

AXLE, version B

1-10a	0942.40.02.00	axle cpl. (1850 mm)
	0942.40.03.00	axle cpl. (2000 mm)
1	0942.40.12.00	axle (1850 mm)
	0942.40.13.00	axle (2000 mm)
2	0942.40.22.00	hub
3	0942.40.60.00	wheel stud
4	0942.40.66.00	wheel nut
5	0942.40.32.00	wheel cap
6	0942.40.77.00	split pin
7	0942.40.72.00	castle nut
8	0942.40.42.00	tap.roller b.outside
9	0942.40.44.00	tap.roller b.inside
10a	0942.40.52.00	seal

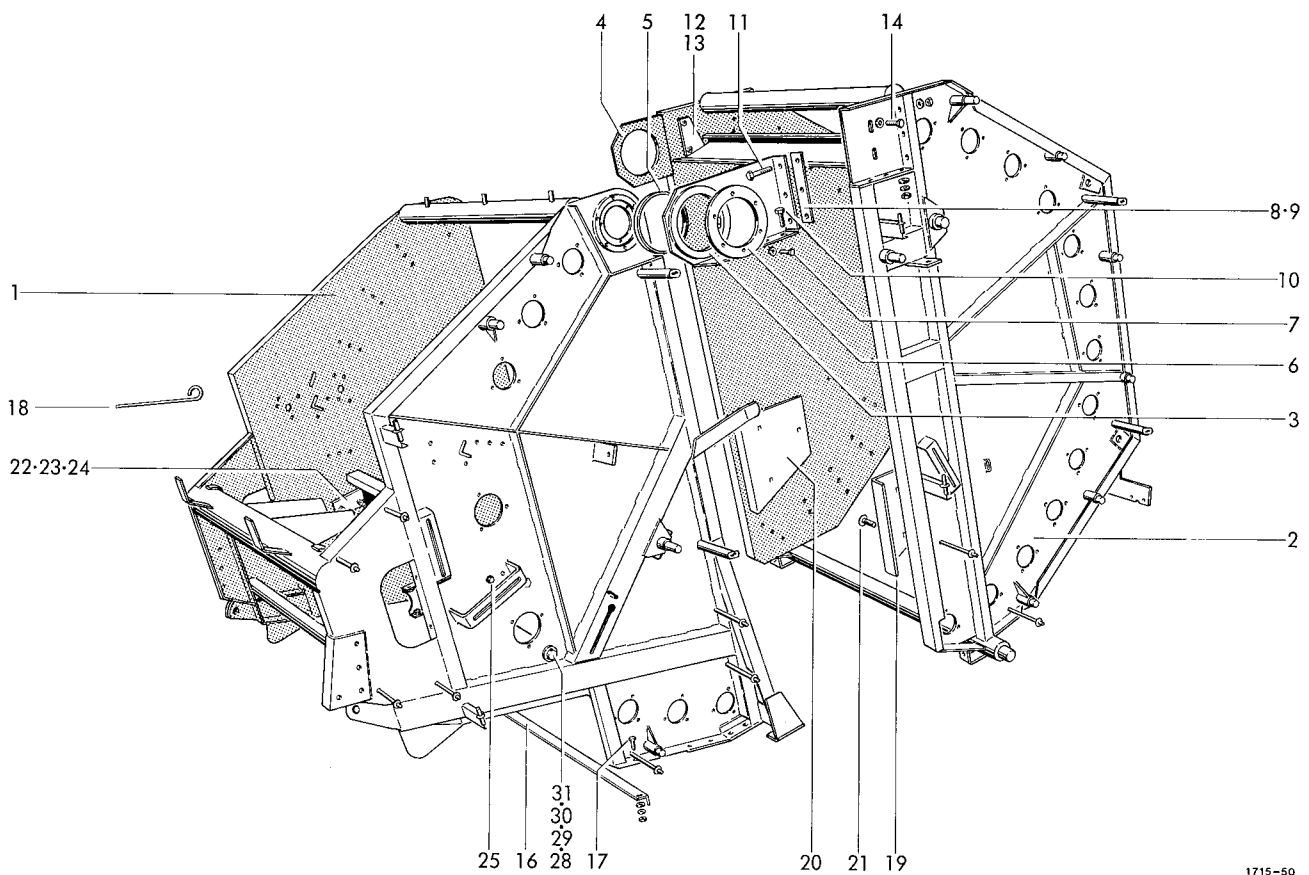
FASTENING PARTS

1	12	0901.22.50.00	hex. bolt M16x40	4
1		0907.10.16.00	hex. nut M16	4
2		0911.10.16.00	spring washer A16	4
12	13	0901.21.47.00	hex. bolt M12x25	4
12		0911.10.12.00	spring washer A12	4
2	13a	1712.02.51.07	shim	nB

ROAD WHEEL

2	14-16	0944.10.60.00	wheel cpl. standard	2
2	16-18	0944.80.22.00	wheel cpl. extra	2
2	19-21	0944.80.23.00	wheel cpl. special	2
2	22-24	0944.11.23.00	+wheel cpl. special	2
2	14	0944.20.60.00	tyre 10.0/75 - 15 6PR	2
2	15*	0944.30.60.00	tube 10.0/75 - 15	2
1	16	0944.51.64.00	rim 9,00 x 15,3	2
1	17	0944.20.71.00	tyre 11.5/80 - 15 6PR	2
1	18*	0944.30.68.00	tube 11.5/80 - 15	2
1	19	0944.20.23.00	tyre 7.50 - 16 10PR	2
2	20*	0944.30.17.00	tube 7.50 - 16	2
12	21	0944.51.30.00	rim 5,50F x 16	2
12	22	0944.21.23.00	+tyre 15.0/55 - 17 8PR	2
2	23*	0944.30.86.00	+tube 15.0/55 - 17	2
2	24	0944.52.20.00	+rim 13 x 17	2

+ = only for axle (2000)

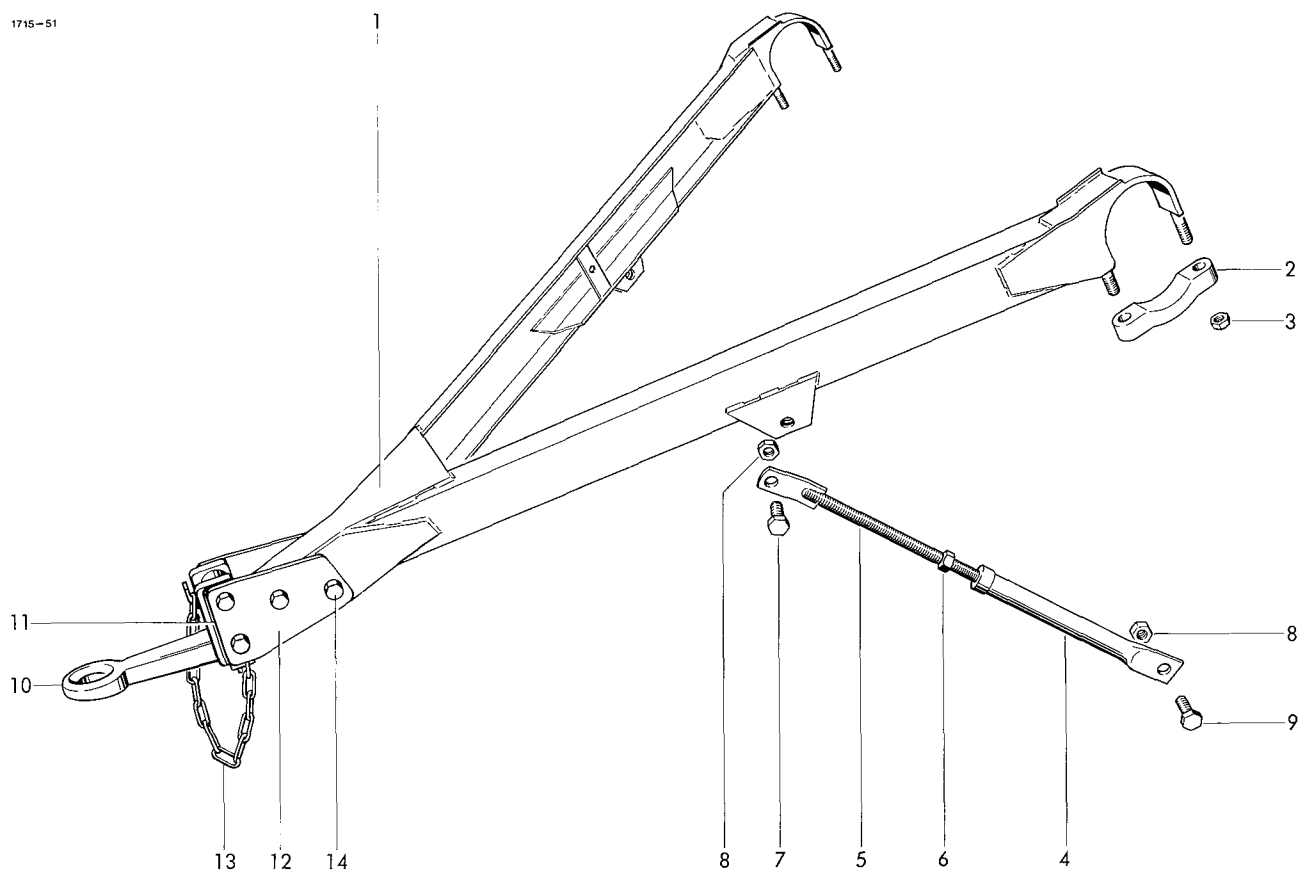


1715-50

FRAME

1	1715.03.00.00	housing	1	17	0901.21.08.00	hex. bolt M10x25	2
2	1715.04.00.00	tail gate	1		0907.10.10.00	hex. nut M10	2
3	1712.07.01.01	hinge, left cpl.	1		0910.40.11.00	washer 11x34x3	2
4	1712.07.02.01	hinge, right cpl.	1		0911.10.10.00	spring washer A10	2
5	0920.19.90.00	bush 164x172x11,6	2	18	1712.51.05.13	rod	1
6	1712.07.01.08	washer	2	19	1712.04.07.01	angle shield left	1
7	0901.20.45.00	hex. bolt M6x16	10	20	1712.04.07.02	angle shield right	1
	0911.10.06.00	spring washer A6	10	21	0903.10.71.00	cup head bolt M10x25	6
7a*	0901.20.47.00	hex. bolt M6x20 for No 3	2		0907.10.10.00	hex. nut M10	6
	0911.10.06.00	spring washer A6	2		0911.10.10.00	spring washer A10	6
8	1712.07.03.01	shim	nB	22-24	1712.09.01.01	guide shield cpl.	1
9	1712.07.03.02	shim	nB	22	1712.09.01.02	guide shield	1
10	0901.21.08.00	hex. bolt M10x25	6	23	1712.09.01.08	+strip	1
	0907.10.10.00	hex. nut M10	6	24	0903.10.70.00	cup head bolt M10x20	6
	0910.15.11.00	washer 11x21x2	6		0907.10.10.00	hex. nut M10	6
	0911.10.10.00	spring washer A10	6		0911.10.10.00	spring washer A10	6
11	0901.11.05.00	hex. bolt M10x60	6	25	0901.21.06.00	hex. bolt M10x20	4
	0907.10.10.00	hex. nut M10	6		0907.10.10.00	hex. nut M10	4
	0911.10.10.00	spring washer A10	6		0911.10.10.00	spring washer A10	4
12	1712.09.01.02	guide shield	1	26*	1712.03.02.41	+channel section	1
13	0901.21.11.00	hex. bolt M10x35	2	27*	0901.21.08.00	+hex. bolt M10x25	twine box 2
	0907.10.10.00	hex. nut M10	2		0907.10.10.00	+hex. nut M10	holder 2
	0911.10.10.00	spring washer A10	2		0911.10.10.00	+spring washer A10	2
14	0901.21.12.00	hex. bolt M10x40	2	28	1712.09.06.10	running-in shield	1
	0907.10.10.00	hex. nut M10	2	29	0901.21.06.00	hex. bolt M10x20	1
	0911.10.10.00	spring washer A10	2		0911.10.10.00	spring washer A10	1
16	1712.03.05.01	angle	1				

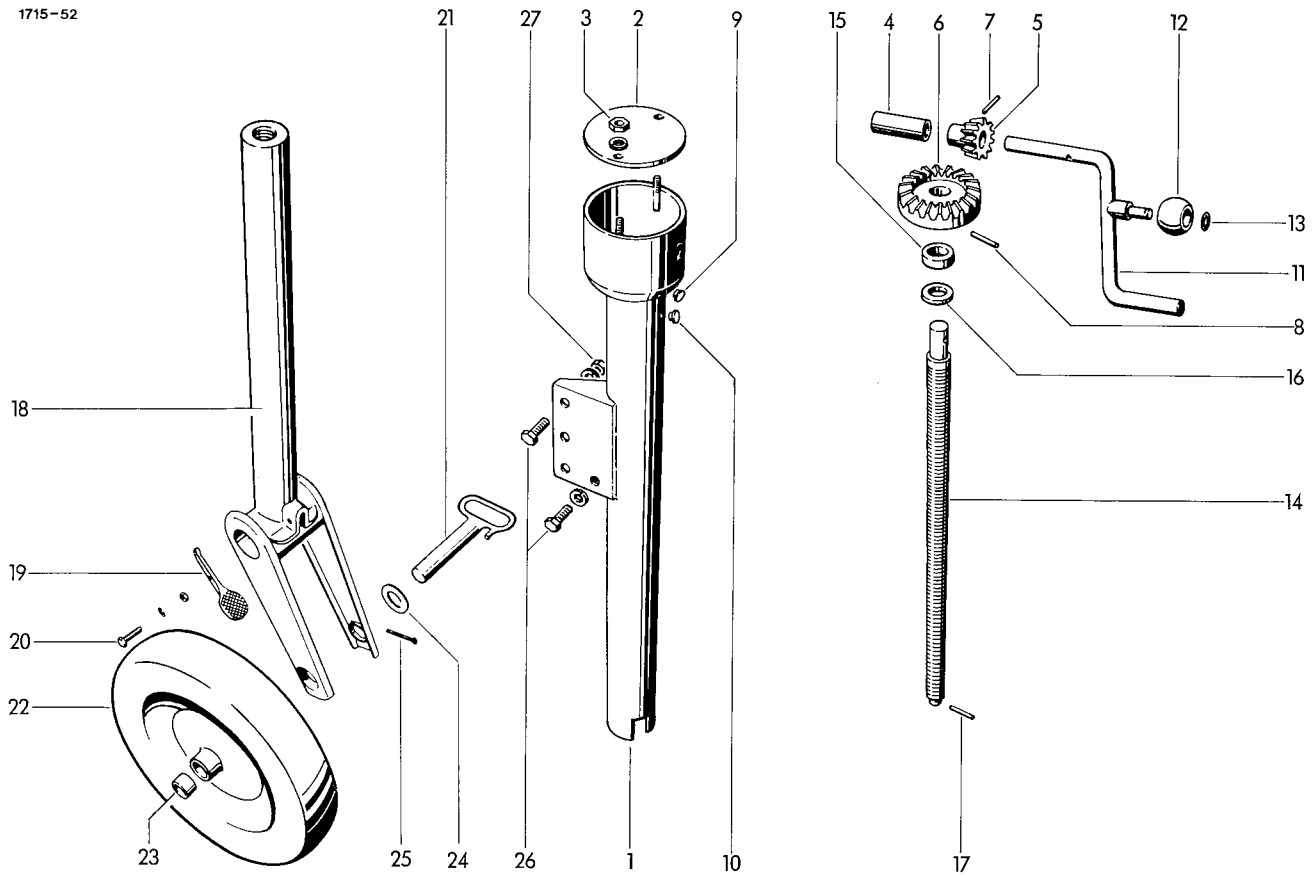
+ = not used on net tying device



DRAWBAR

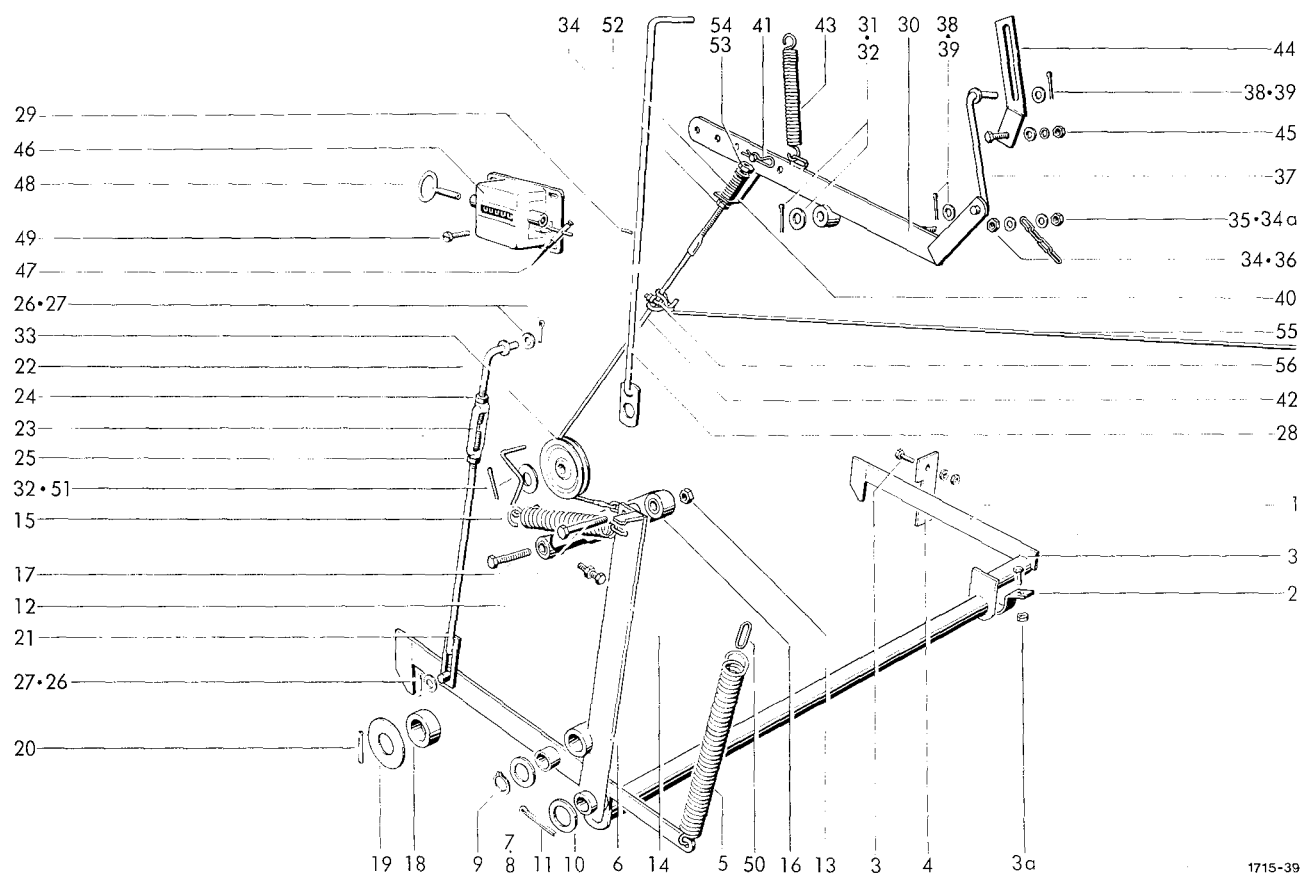
1	1712.05.01.01	drawbar
2	0331.85.00.00	clamp
3	0907.60.16.00	safety nut NM16
4-6	1712.05.02.01	stay
4	1712.05.02.02	bush
5	1712.05.02.06	rod
6	0907.10.20.00	hex. nut M20
7	0901.23.50.00	hex. bolt M20x50
8	0907.60.20.00	safety bolt NM20

1	9	0901.23.52.00	hex. bolt M20x60	2
2	10	0937.51.83.00	adjusting hitch	1
4	11	1712.05.04.02	filling plate	nB
2	12	1712.05.04.03	plate	2
2	13	0935.13.19.00	chain 19 links	1
2	14	0901.13.49.00	hex. bolt M20x120	4
2		0907.10.20.00	hex. nut M20	4
2		0911.10.21.00	spring washer B20	4
4				



SUPPORT WHEEL

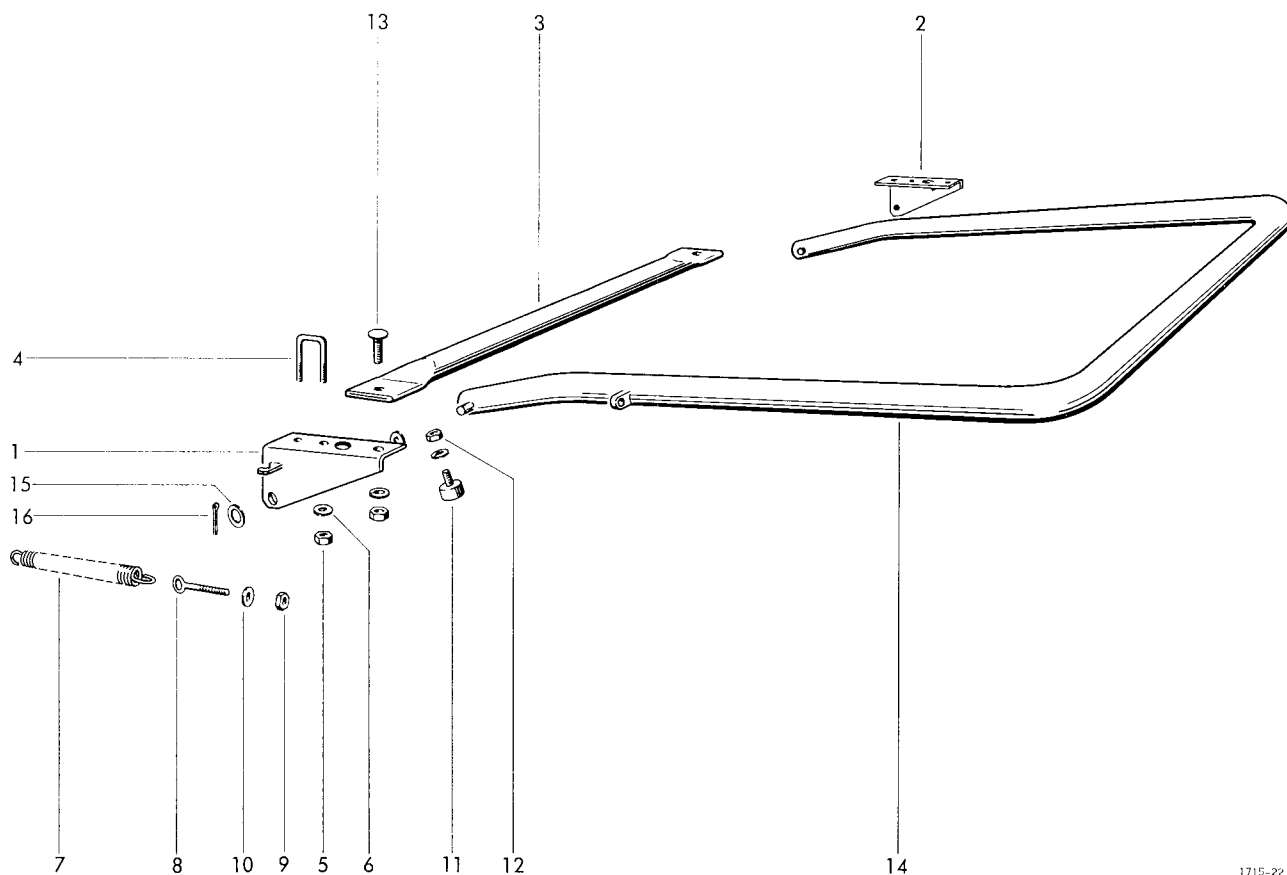
1-25	0944.90.11.00	support wheel cpl.	1	15	0944.93.42.00	tapered roller bearing	1
1	0944.91.51.00	tube cpl.	1	16	0944.93.58.00	washer	1
2	0944.92.90.00	cover	1	17	0915.50.95.00	expanding pin 4x32	1
3	0907.10.08.00	hex. nut M8	2	18	0944.91.72.00	inner tube cpl.	1
	0911.10.08.00	spring washer A8	2	19	0944.93.61.00	lever	1
4	0944.92.96.00	spacer tube	1	20	0901.20.72.00	hex. bolt M8x40	1
5	0944.92.71.00	bevel gear 1	1	21	0907.10.08.00	hex. nut M8	1
6	0944.92.70.00	bevel gear 2	1	22	0944.93.38.00	bolt cpl.	1
7	0915.51.89.00	expanding pin 8x60	1	23	0944.90.46.00	wheel	1
8	0915.51.55.00	expanding pin 6x30	1	24	0944.93.51.00	bush	2
9	0944.92.97.00	plug	2	25	0944.92.95.00	washer	1
10	0944.92.98.00	plug	1	26	0916.11.15.00	split pin 5x45	1
11	0944.92.37.00	crank handle	1	27	0901.21.50.00	hex. bolt M12x35	3
12	0944.92.40.00	ball	1		0911.10.12.00	spring washer A12	3
13	0944.93.54.00	snap ring	1		0907.10.12.00	hex. nut M12	3
14	0944.92.05.00	spindle	1				



1715-39

LOCKING DEVICE

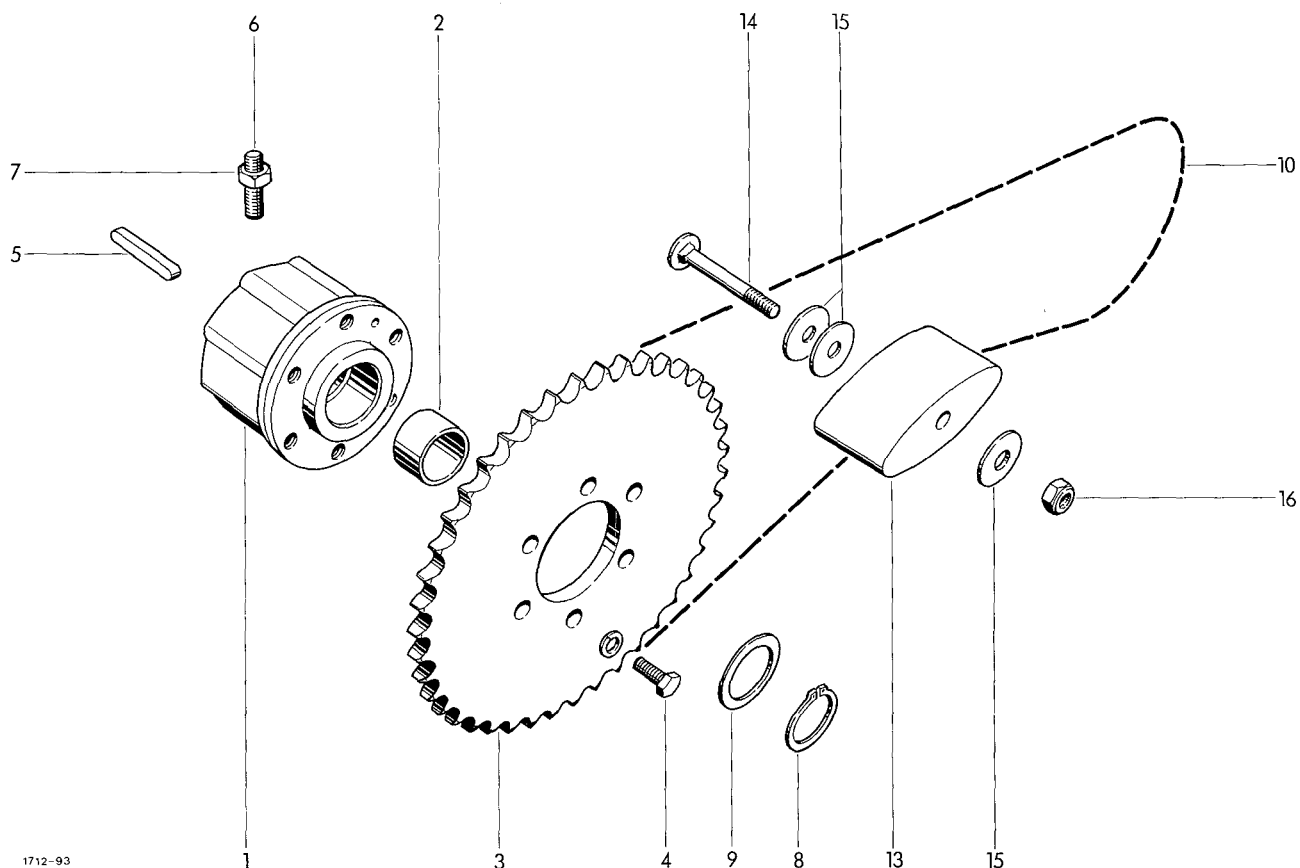
1	1712.08.01.01	locking frame	1	29	0915.50.91.00	expanding pin 4x24	1
2	1712.08.01.14	clamp	1	30	1715.08.05.01	lever	1
3	0901.20.68.00	hex. bolt M8x25	4	31	0910.10.21.00	washer 21x37x3	1
	0907.10.08.00	hex. nut M8	2	32	0916.10.99.00	split pin 4x32	2
	0911.10.08.00	spring washer A8	2	33	0726.15.00.00	roller 88x21x18,5	1
3a	0907.60.08.00	safety nut NM8	2	34	0907.10.08.00	hex. nut M8	3
4	1712.08.01.19	guide plate	1	34a	0907.60.08.00	safety nut NM8	1
5	0940.25.45.00	tension spring 6x31x250	1	35	0910.15.09.00	washer 9x17x1,6	2
6	1715.08.02.01	tension lever w. No 7	1	36	0935.11.05.00	chain 5 links	1
7	0920.15.34.00	bush 35x39x30	1	37	1715.08.05.18	rod	1
8	0910.84.45.00	shim 35,1x55x0,5	n8	38	0910.15.11.00	washer 11x21x2	2
9	0912.10.35.00	circlip 35x1,5	1	39	0916.10.68.00	split pin 3x20	2
10	0910.81.97.00	washer 45,5x60x4	2	40	1712.08.05.26	angle	1
11	0916.11.30.00	split pin 6x70	1	41	0916.21.03.00	spring clip 3,2	1
12	0901.11.46.00	hex. bolt M12x75	1	42	0936.45.11.00	rope 4x1092	1
13	0907.60.12.00	safety nut NM12	1	43	0940.23.47.00	tension spring 3x25x220	1
14	0901.21.53.00	hex. bolt M12x50	1	44	1715.08.05.35	angle	1
	0911.10.12.00	spring washer A12	1	45	0901.21.06.00	hex. bolt M10x20	1
15	0940.25.21.00	tension spring 5x35x250	1		0907.10.10.00	hex. nut M10	1
16	0940.96.01.00	shock absorber	1		0910.40.11.00	washer 11x34x3	1
17	0901.21.53.00	hex. bolt M12x50	1		0911.10.10.00	spring washer A10	1
	0907.10.12.00	hex. nut M12	1	46	0995.10.01.00	bale counter cpl. w. 47+48	1
18	1712.08.03.11	roller	2	47	0995.10.34.00	spring lever	1
19	1712.08.03.12	washer	2	48	0995.10.33.00	key f. bale counter	1
20	0915.51.66.00	expanding pin 6x80	2	49	0902.24.24.00	cheese head bolt M4x10	4
21-27	1715.08.04.01	rod cpl.	1		0911.10.04.00	spring washer A4	4
21	1715.08.04.02	rod	1		0907.10.04.00	hex. nut M4	4
22	1712.08.04.06	hook	1	50	0935.13.01.00	chain link	1
23	0908.82.04.00	turnbuckle nut SPM12	1	51	1712.08.05.35	safety brake	1
24	0907.10.12.00	hex. nut M12	1	52	0940.12.70.00	tension spring 2,5x13,5x35	1
25	0907.10.13.00	hex. nut M12 li	1	53	0910.10.08.00	washer 8,4x17x1,6	1
26	0910.15.14.00	washer 14x24x2,5	3	54	0907.80.08.00	safety nut M8	1
27	0916.10.99.00	split pin 4x32	2	55	0936.49.50.00	rope 6x5000	1
28	1715.08.04.17	rod with No 29	1	56	0936.90.03.00	rope clamp	1



1715-22

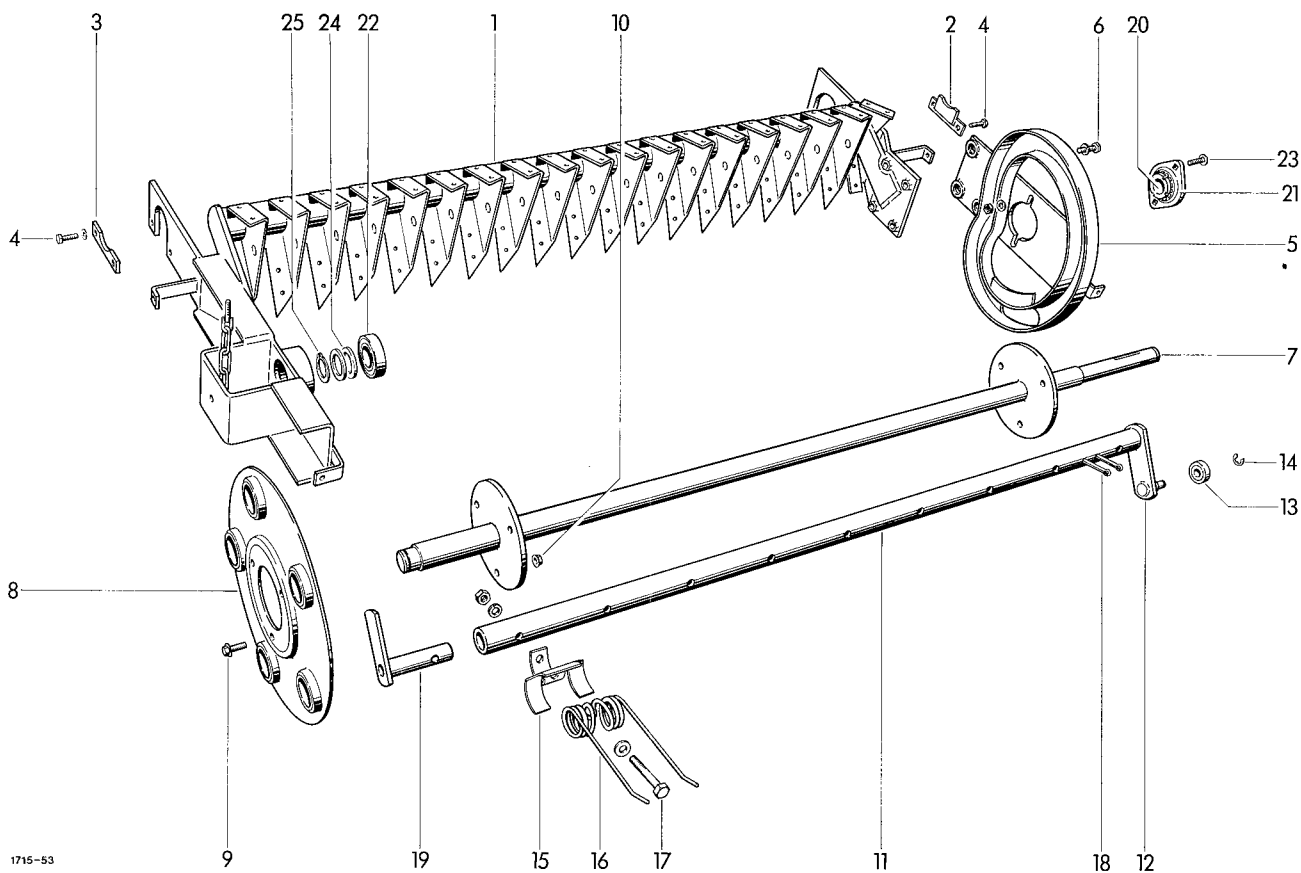
BALE EJECTOR
Extra equipment

1-16	1715.92.00.00	bale ejector cpl.	1	10	0910.10.13.00	washer 13x24x2,5	2
1	1712.92.01.01	bearing block left	1	11	0938.98.40.00	rubber buffer M8x20 RD 40	2
2	1712.92.01.08	bearing block right	1	12	0907.10.08.00	hex. nut M8	2
3	1712.92.01.16	tube	1		0911.10.08.00	spring washer A8	2
4	1712.92.01.17	rod	2	13	0903.10.72.00	cup head bolt M10x30	2
5	0907.60.14.00	safety nut	4		0907.10.10.00	hex. but M10	2
6	0910.25.15.00	washer 15x28x3	6		0911.10.10.00	spring washer A10	2
7	0940.25.45.00	tension spring 6x31x250	2	14	1715.92.02.01	rod	1
8	0903.39.13.00	eye bolt M12x120	2	15	0910.15.22.00	washer 22x37x3	4
9	0907.60.12.00	safety nut NM12	2	16	0916.11.12.00	split pin 5x32	2



PICK UP DRIVE

1	0930.34.18.00	star ratchet clutch w.No 2	1	10	0934.16.33.00	roller chain 10B-1x87E	1
2	0920.14.20.00	bush 30x36x22	1	11*	0934.64.88.00	connecting link	1
3	0309.71.00.00	chain sprocket 49Z 10B-1	1	12*	0934.60.88.00	cranket link H-10B-1	1
4	0901.20.66.00	hex. bolt M8x20	6	13	0934.99.01.00	tension block 100x40x53	1
	0911.10.08.00	spring washer A8	6	14	0901.11.11.00	hex. bolt M10x90	1
5	0913.10.50.00	feather key A8x7x56	1	15	0910.40.11.00	washer 11x34x3	3
6	0904.70.51.00	stud M10x12	1	16	0907.60.10.00	safety nut NM10	1
7	0907.10.10.00	hex. nut M10	1				
8	0912.10.30.00	circlip 30x1,5	1				
9	0910.72.50.00	shim 30x42x0,1	nB				
	0910.72.52.00	shim 30x42x0,3	nB				
	0910.72.54.00	shim 30x42x1	nB				



PICK-UP FRAME

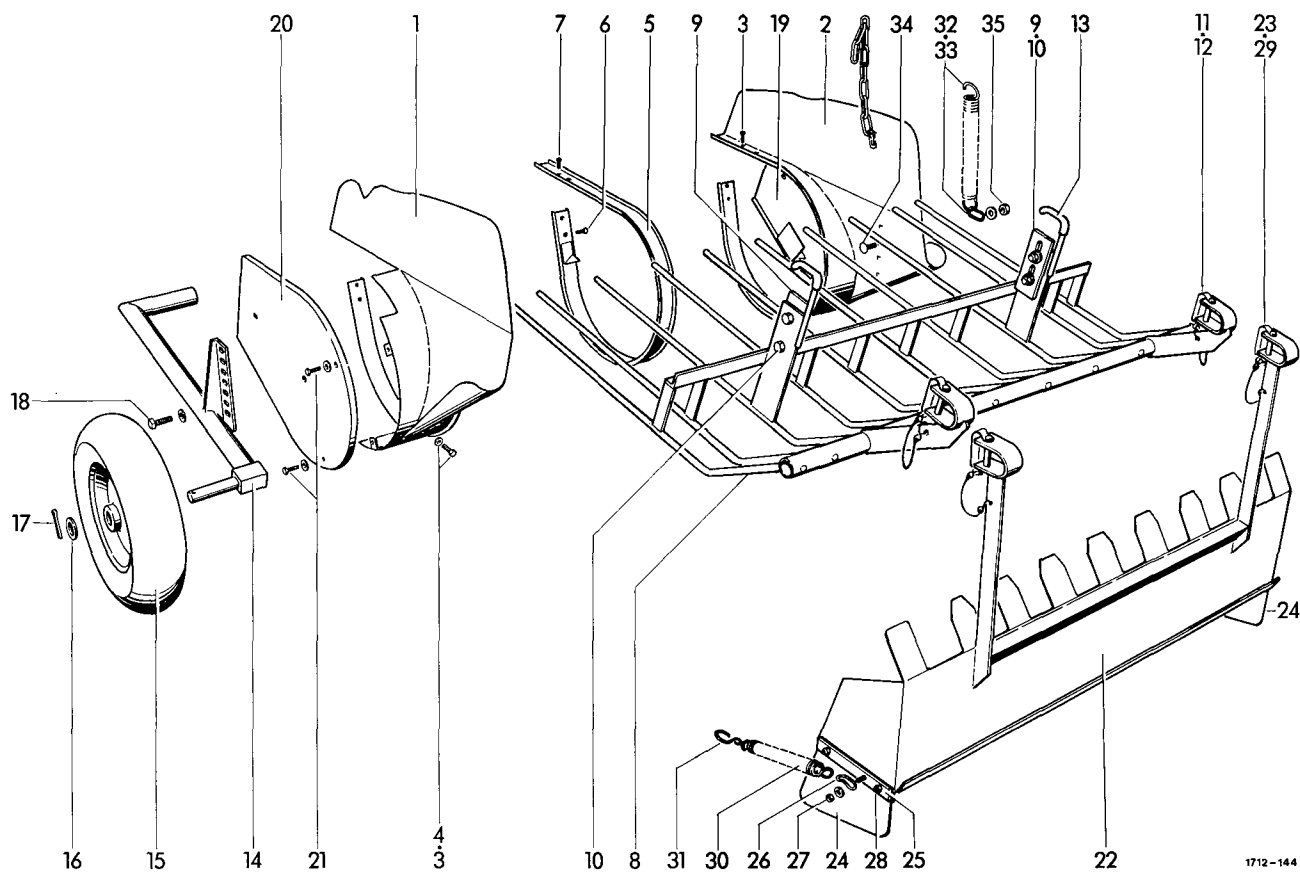
1	1712.42.01.01	frame	1	16	0940.52.25.00	spring DR5	45
2	1712.42.01.25	bracket	1	17	0901.11.05.00	hex. bolt M10x60	45
3	1712.42.01.28	stop	1		0907.10.10.00	hex. nut M10	45
4	0901.20.66.00	hex. bolt M8x20	4		0911.10.10.00	spring washer A10	45
	0911.10.08.00	spring washer A8	4		0910.15.11.00	washer 11x21x2	45
5	1712.42.01.35	guide plate	1	18	0916.11.28.00	split pin 6x60	10
6	0901.21.50.00	hex. bolt M12x35	4	19	1121.42.02.31	guide	5
	0911.10.12.00	spring washer A12	4				

PICK-UP DRUM

7	1712.42.02.01	centre shaft	1				
8	1121.42.02.06	bearing plate	2	20	0922.18.17.00	ball bearing with tapered sleeve	1
9	0901.80.46.00	safety bolt M8x20	6	21	0924.20.31.00	housing parted	1
10	0907.81.08.00	safety nut M8	5	22	0922.12.91.00	ball bearing	1
11-14	1712.42.02.12	tine bar cpl.	5	23	0903.10.71.00	cup head bolt M10x25	2
11	1712.42.02.13	tine bar with No 12	5		0907.10.10.00	hex. nut M10	2
12	1121.42.02.36	lever	5		0911.10.10.00	spring washer A10	2
13	0922.18.03.00	ball bearing 562 982	5	24	0910.76.30.00	thrust washer 30x42x2,5	2
14	0912.50.10.00	safety washer 10	5	25	0912.10.30.00	circlip 30x1,5	1
15	0338.30.00.00	tine holder	45				

REEL-BEARING

20+21	0924.20.30.00	flange housing with adjustable bearing	1
20	0922.18.17.00	ball bearing with tapered sleeve	1
21	0924.20.31.00	housing parted	1
22	0922.12.91.00	ball bearing	1
23	0903.10.71.00	cup head bolt M10x25	2
	0907.10.10.00	hex. nut M10	2
	0911.10.10.00	spring washer A10	2
24	0910.76.30.00	thrust washer 30x42x2,5	2
25	0912.10.30.00	circlip 30x1,5	1



1712-144

SIDE SHIELD

1	1712.42.13.01	side shield
2	1712.42.13.07	side shield
3	0905.19.11.00	tapping screw M6x15
4	0910.10.06.00	washer 6,4x12,5x1,6

SEGMENT

5	1712.42.05.05	segment
6	0905.19.11.00	tapping screw M6x15
7	0905.19.12.00	tapping screw M6x20

WINDGUARD

8	1715.42.12.21	windguard
9	1712.42.12.10	stop
10	0901.21.49.00	hex. bolt M12x30
	0907.60.12.00	safety nut NM12
	0910.60.13.00	washer 13x30x6
11	0918.19.12.00	spring pin 12x55
12	0937.19.03.00	safety clip
13	1712.42.12.16	flexible tube
13a*	0940.23.47.00	tension spring for No 8
13b*	0935.13.02.00	chain for No 8

PICK-UP GUIDE WHEEL

14	1712.42.08.01	wheel bracket
15	0944.90.61.00	guide wheel 400x100
16	0910.25.26.00	washer 26x40x4
17	0916.11.36.00	split pin 6,3x40
18	0901.21.47.00	hex. bolt M12x25
	0910.10.13.00	washer 13x24x2,5

GUARD

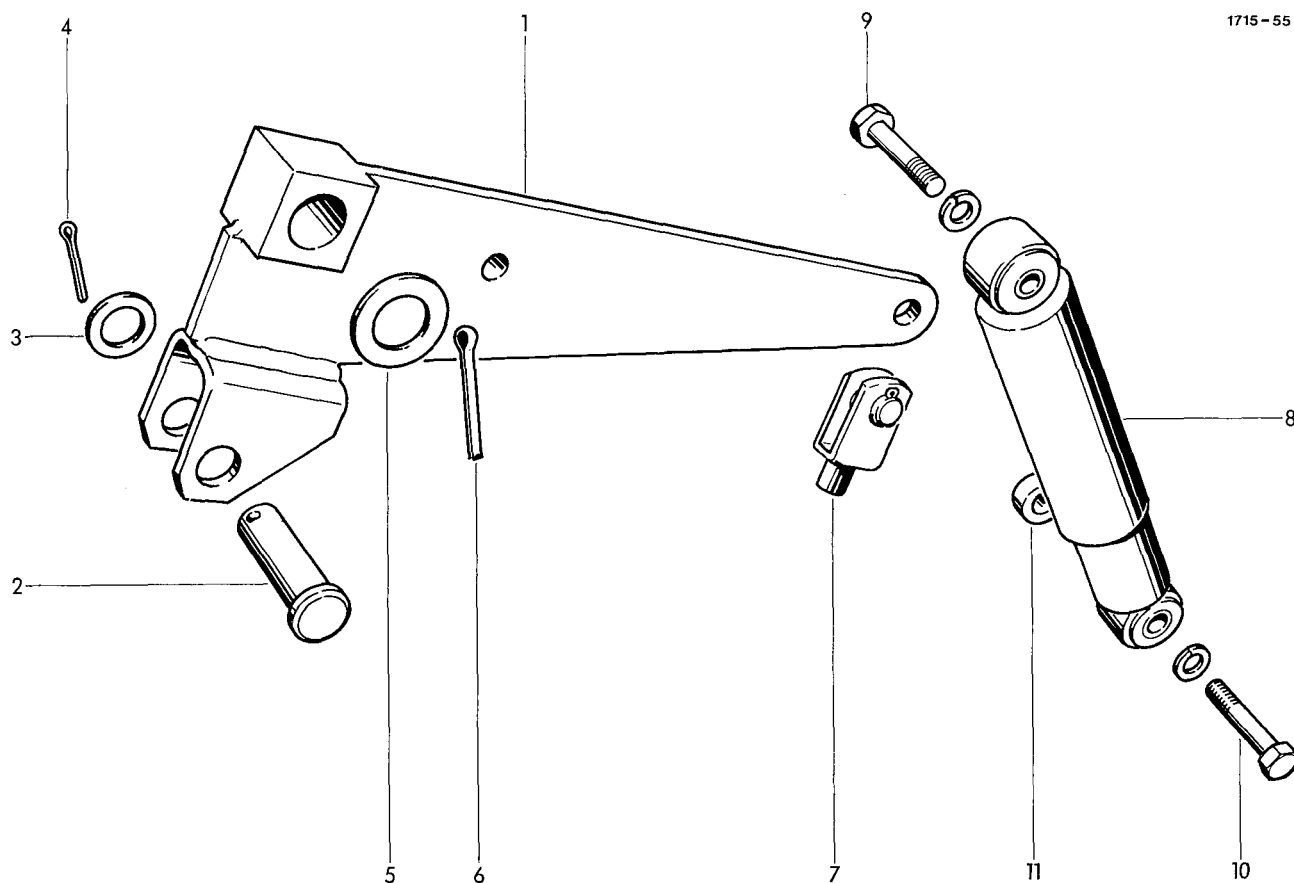
1	19	1712.42.09.01	guard	1
1	20	1712.42.09.02	guard	1
10	21	0901.20.42.00	hex. bolt M6x10	6
2		0910.60.06.00	washer 6,4x17x3	6

SHIELD (EXTRA EQUIPMENT)

17	22-31	1712.42.91.00	pick-up guide shield cpl.	1
34	22	1712.42.91.22	shield	1
34	23	0918.19.13.00	spring pin	2
	24	0938.96.32.00	rubber plate 5x150x245	2
	25	1712.42.91.08	clamping plate	2
	26	0935.11.02.00	chain link	2
1	27	0903.10.18.00	cup head bold M6x30	2
2		0907.10.06.00	hex. nut M6	2
4		0910.60.06.00	washer 6,4x17x3	2
4		0911.10.06.00	spring washer A6	2
4	28	0903.10.17.00	cup head bold M6x25	4
2		0907.10.06.00	hex. nut M6	4
2		0911.10.06.00	spring washer A6	4
2	29	0937.19.03.00	safety clip	2
1	30	0940.22.30.00	tension spring 2x21x164	2
1	31	0937.17.19.00	hook	2

PICK-UP BALANCE SPRING

1	32	0940.25.21.00	tension spring 5x35x250	1
1	33	0935.13.03.00	chain link	1
2	34	0903.10.71.00	cup head bolt M10x25	1
2		0910.60.10.00	washer 10,5x25x4	1
1	35	0907.60.10.00	safety nut NM10	1

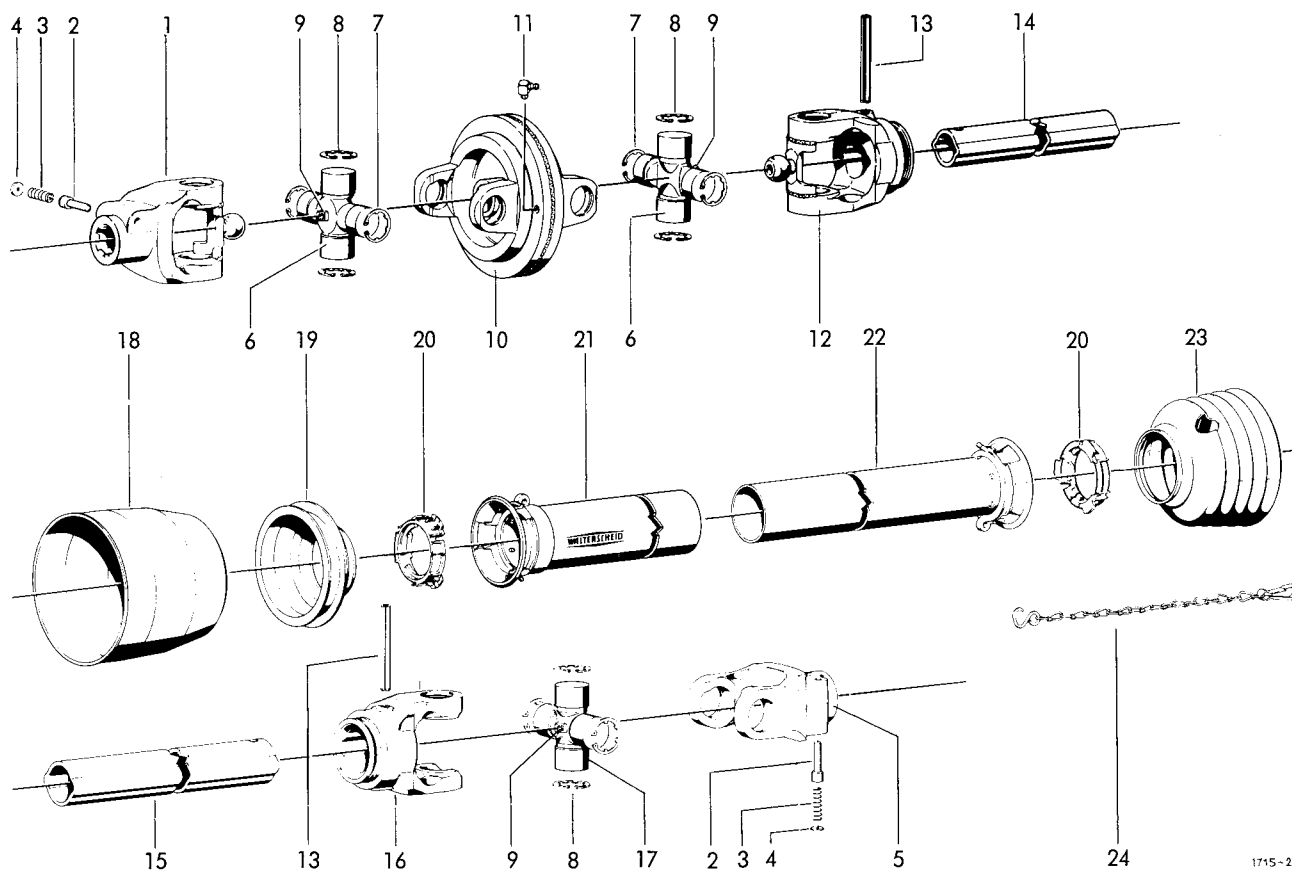


PICK UP
LIFTING DEVICE

1	1712.43.01.12	lever	1
2	0917.31.46.00	pin 16x50x45	1
3	0910.10.17.00	washer 17x30x3	1
4	0916.10.97.00	split pin 4x25	1
5	0910.10.21.00	washer 21x37x3	1
6	0916.11.12.00	split pin 5x32	1
7	0919.71.10.00	link joint with split pin	1

SHOCK ABSORBER

8	0940.96.01.00	shock absorber	1
9	0901.21.53.00	hex. bolt M12x50	1
	0911.10.12.00	spring washer A12	1
10	0901.11.44.00	hex. bolt M12x65	1
	0911.10.12.00	spring washer A12	1
11	1712.42.07.09	spacer bush	1

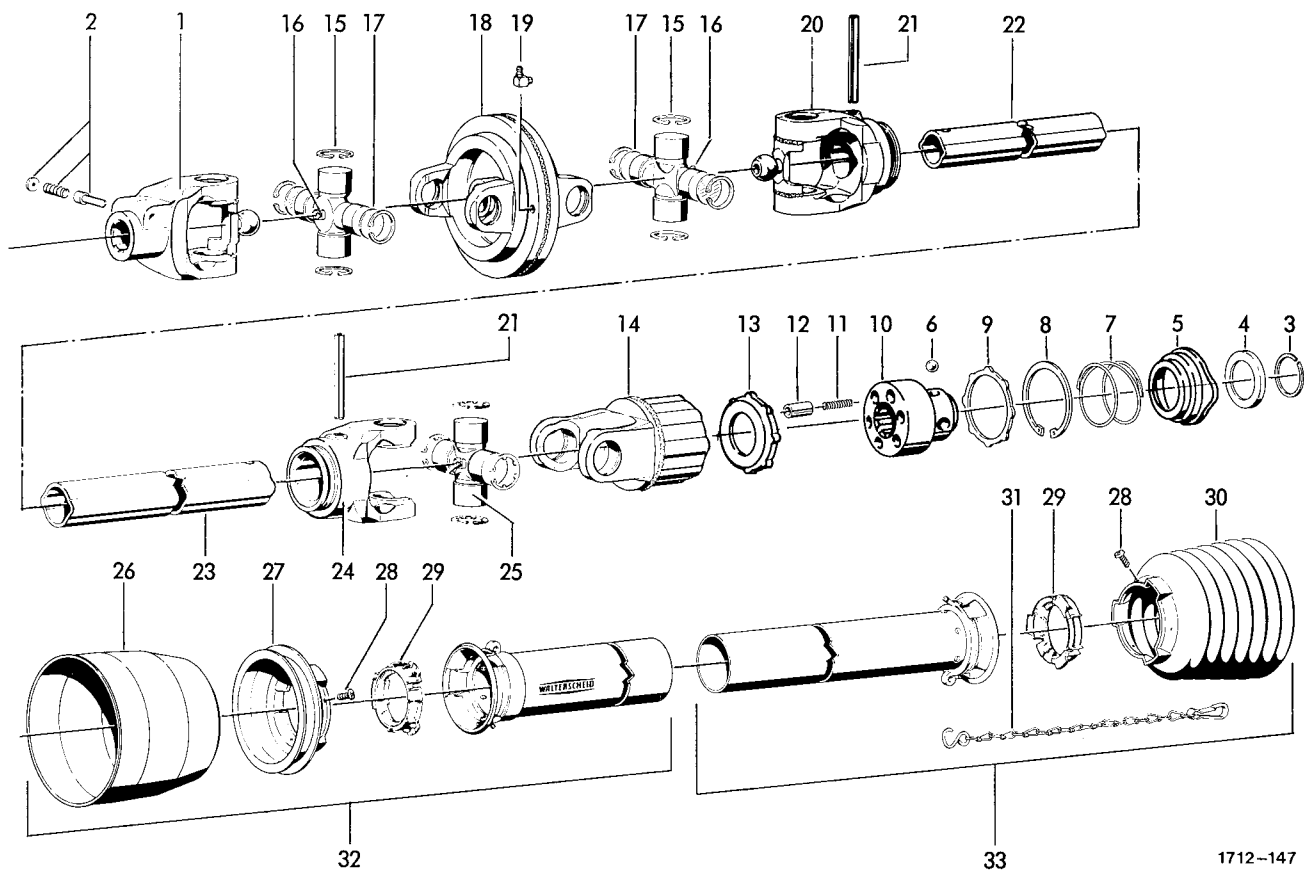


1715-27

WIDE-ANGLE PTO DRIVE SHAFT

1-24	0930.13.08.00	wide-angle pto drive shaft	1	13	0915.52.22.00	expanding pin 10x80	2
1	0930.22.21.00	connecting yoke cpl.	1	14	0930.42.43.00	+profil tube	1
2	0930.41.03.00	sliding pin	2	15	0930.42.40.00	+profil tube	1
3	0930.40.26.00	tension spring	2	16	0930.26.70.00	yoke	1
4	0930.28.01.00	washer	2	17	0930.20.14.00	spider unit with No 8+9	1
5	0930.22.18.00	connecting yoke with No 2-4	1	18	0930.45.07.00	guard funnel	1
6	0930.20.16.00	spider unit with No 7-9	2	19	0930.45.31.00	guard funnel	1
7	0930.31.04.00	safety ring	4	20	0930.50.40.00	guide ring	2
8	0930.31.08.00	safety ring	8	21	0930.44.77.00	+outer guard tube with cover	1
9	0926.10.10.00	grease nipple M8x1	3	22	0930.44.18.00	+outer guard tube with cover	1
10	0930.22.60.00	double yoke	1	23	0930.45.20.00	guard funnel	1
11	0926.10.08.00	grease nipple M8x1	1	24	0930.49.02.00	holding chain	1
12	0930.26.73.00	yoke	1				

+ = state lengt

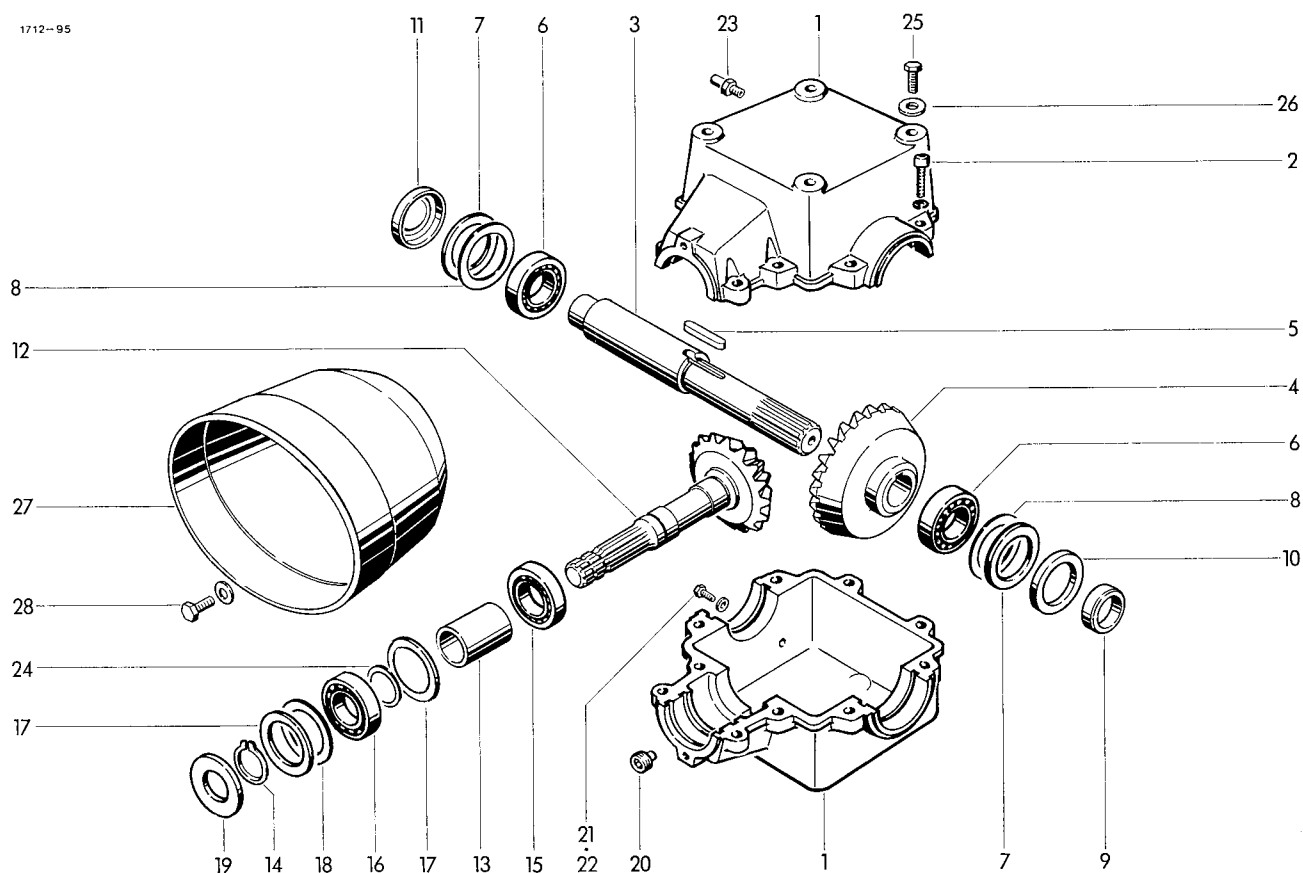


1712-147

WIDE -ANGLE PTO DRIVE SHAFT
WITH FREE WHEELING CLUTCH
(EXTRA EQUIPMENT)

1-33	0930.13.06.00	wide-angle pto drive shaft	1	17	0930.28.09.00	washer	4
1	0930.22.21.00	connecting yoke with No 2-4	1	18	0930.22.61.00	double yoke	1
2	0930.41.04.00	sliding pin cpl.	1	19	0926.10.05.00	grease nipple BM8x1	1
3-14	0930.34.61.00	clutch cpl.	1	20	0930.26.73.00	yoke	1
3	0912.60.06.00	snap ring	1	21	0915.52.22.00	expanding pin 10x80	2
4	0930.32.01.00	back-up ring	1	22	0930.42.44.00	+profil tube	1
5	0930.41.60.00	lock collar	1	23	0930.42.41.00	+profil tube	1
6	0922.96.74.00	ball	3	24	0930.26.70.00	yoke	1
7	0930.40.25.00	compression spring	1	25	0930.20.14.00	spider unit cpl. with No 16	1
8	0912.15.80.00	retaining ring	1	26	0930.45.07.00	guard funnel	1
9	0930.29.02.00	supporting ring	1	27	0930.49.63.00	collar with No 28	1
10	0930.33.61.00	hub	1	28	0930.41.39.00	screw	2
11	0930.40.24.00	compression spring	6	29	0930.50.40.00	bearing ring	2
12	0930.38.80.00	drive pin	6	30	0930.45.38.00	guard funnel	1
13	0930.30.01.00	drive plate	1	31	0930.49.02.00	safety chain	1
14	0930.38.12.00	clutch housing	1	32	0930.53.66.00	outer guard half	1
15	0930.20.16.00	spider unit cpl. with 16+17	2	33	0930.53.25.00	inner guard half	1
16	0926.10.10.00	grease nipple M8x1	3				

+ = state length

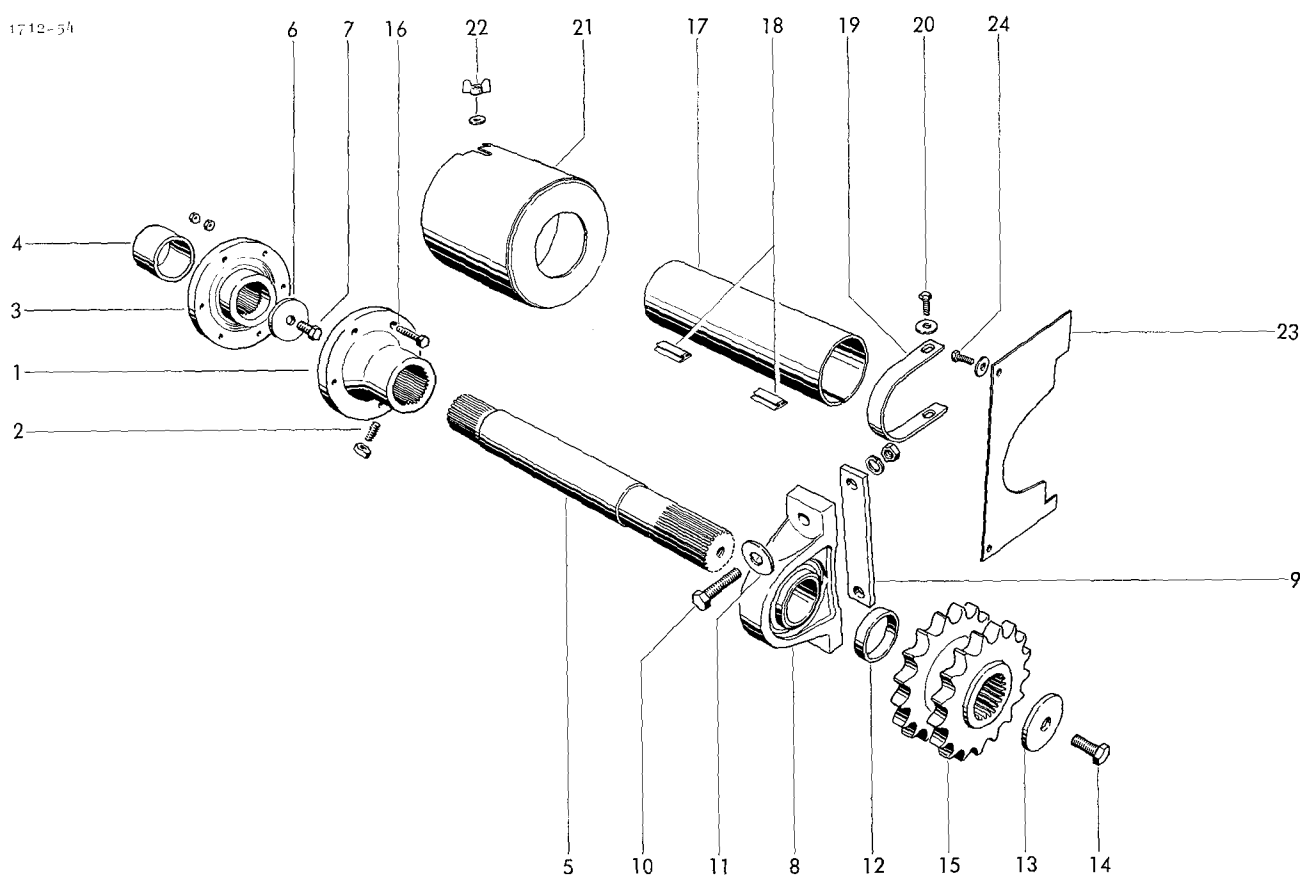


GEAR BOX

1-24	1712.12.01.00	gear box cpl.	1	16	0922.10.28.00	ball bearing 6208	1
	1712.12.92.00	+gear box cpl.	1	17	0910.76.65.00	thrust washer 65x85x3,5	2
1	1712.12.01.01	gear housing cpl. with No 2	1	18	0910.74.85.00	shim 65x85x0,1	nB
2	0902.11.09.00	cheese head bolt M12x50	10		0910.74.87.00	shim 65x85x0,3	nB
	0911.10.12.00	spring washer A12	10		0910.74.88.00	shim 65x85x0,5	nB
3	1712.12.01.10	shaft	1	19	0925.14.40.00	seal BAF40x80x10	1
4	0307.97.00.00	bevel gear 31x6x40	1	20	0903.80.11.00	lock bolt	
	0307.67.00.00	+bevel gear 37x4x40	1			with magnet M18x1,5	1
5	0913.12.75.00	feather key B12x8x50	1	21	0901.20.45.00	hex. bolt M6x16	1
6	0922.10.48.00	ball bearing 6308	2	22	0925.40.06.00	seal A6,5x9,5	1
7	0910.76.75.00	thrust washer 75x95x3,5	2	23	0926.76.18.00	breather M18x1,5	1
8	0910.75.15.00	shim 75x95x0,1	nB	24	0910.73.10.00	shim 40x50x0,1	nB
	0910.75.17.00	shim 75x95x0,3	nB		0910.73.12.00	shim 40x50x0,3	nB
	0910.75.18.00	shim 75x95x0,5	nB	25	0901.21.49.00	hex. bolt M12x30	4
9	1712.12.01.16	bush	1		0910.60.13.00	washer 13x30x6	4
10	0925.14.55.00	seal BA55x90x10	1				
11	0910.69.90.00	lock washer	1			GUARD FUNNEL	
12	0307.96.00.00	pinion shaft 15x6	1				
	0307.66.00.00	+pinion shaft 11x4	1	27	1701.12.03.01	guard	1
13	1702.12.92.26	spacer bush	1	28	0901.20.66.00	hex. bolt M8x20	2
14	0912.10.40.00	circlip 40x1,75	1		0910.40.09.00	washer 9x28x3	2
15	0922.61.43.00	roller bearing NUP 2208E	1				

+ = gear box 1000/min (extra equipment)

1712-54



CROSS DRIVE

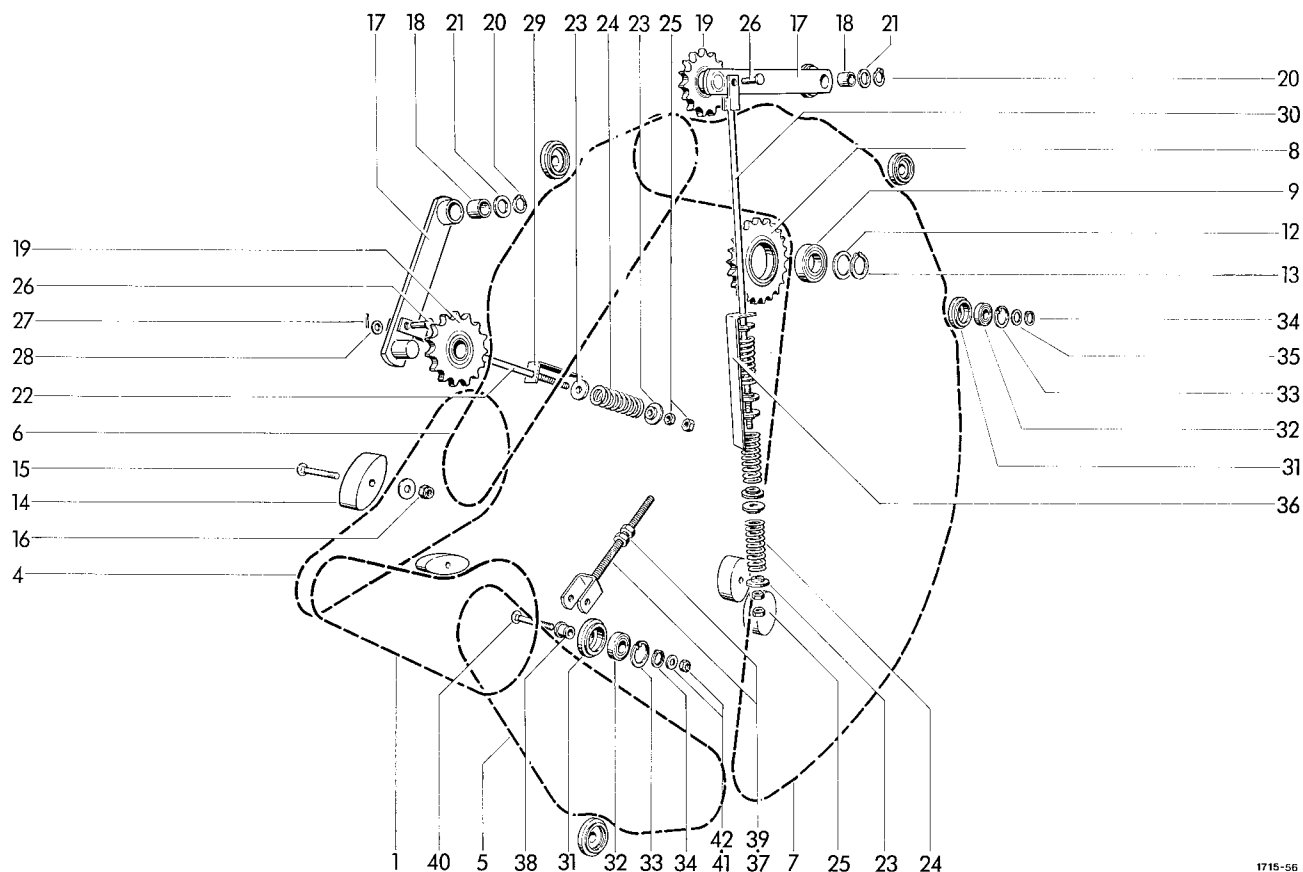
1	1712.12.03.28	flange
2	0904.70.53.00	stud M10x20
	0907.10.10.00	hex. nut M10
3	0336.59.00.00	flange
4	1712.12.03.36	spacer tube
5	1712.12.03.09	shaft
6	0910.80.30.00	washer 11x47x4
7	0901.30.65.00	hex. bolt M10x20
8	0924.10.36.00	pillow block RASE 50
9	1712.12.03.13	plate
10	0901.11.43.00	hex. bolt M12x60
	0907.10.12.00	hex. nut M12
	0911.10.12.00	spring washer A12
11	0910.80.39.00	washer 12,5x35x10
12	1712.12.03.18	bush
13	0910.80.46.00	washer 13x60x5
14	0901.30.88.00	hex. bolt M12x30
15	1715.12.03.24	chain sprocket

SHEAR BOLT

1	16	0902.10.30.00	cheese head bolt M8x50	1
1		0907.10.08.00	hex. nut M8	2

CROSS DRIVE GUARD

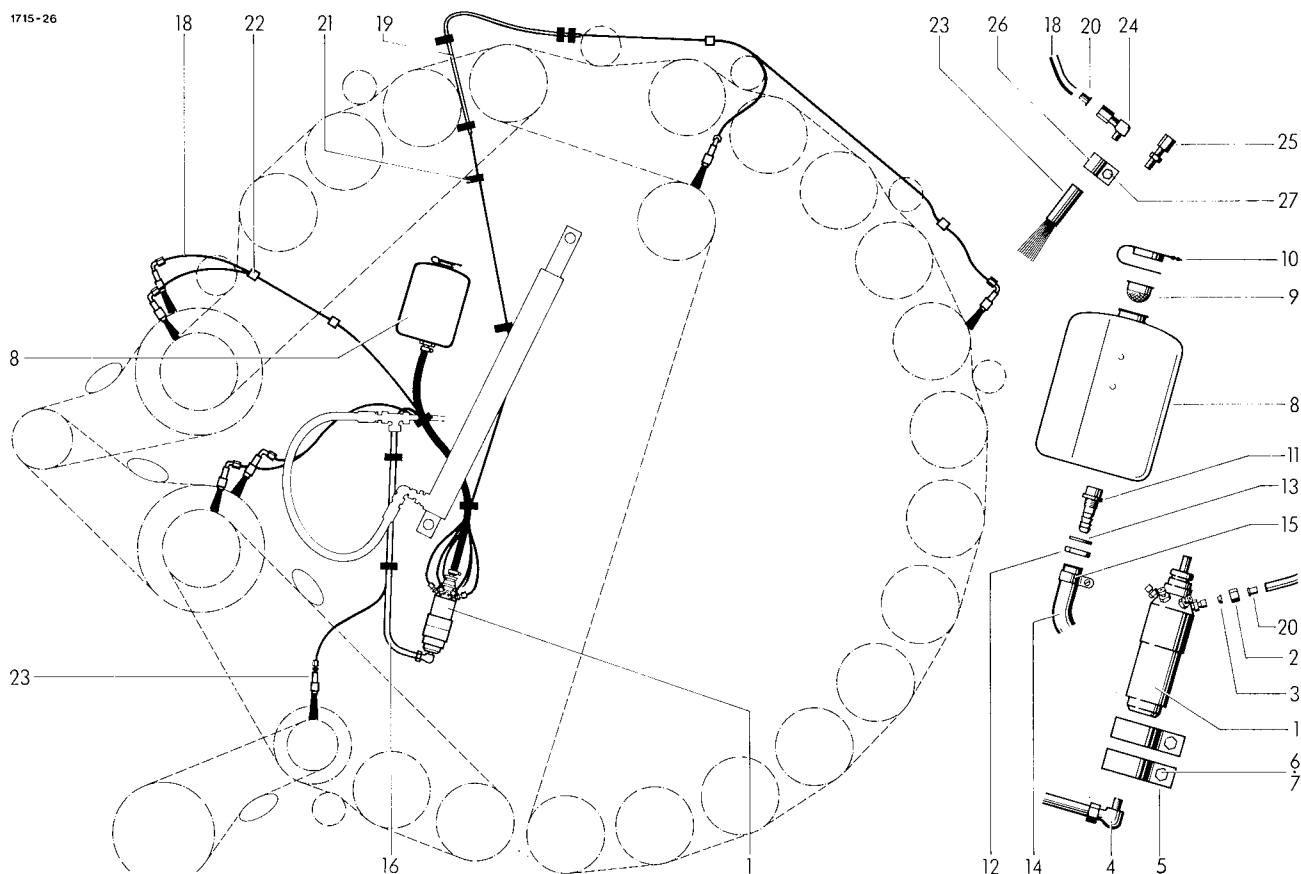
1	17	0994.80.17.00	guard tube	1
1	18	0994.80.18.00	clamping piece	2
1	19	1702.51.01.03	clamp	1
1	20	0901.20.66.00	hex. bolt M8x20	2
1		0910.15.09.00	washer 9x17x1,6	2
1	21	1712.12.52.08	cover	1
1	22	0908.31.06.00	wing nut M6	1
1		0910.40.06.00	washer 6,6x22x2	1
1	23	1712.12.52.14	guard shield	1
1	24	0901.20.45.00	hex. bolt M6x16	2
1		0910.40.06.00	washer 6,6x22x2	2



1715-56

TRANSMISSION PARTS

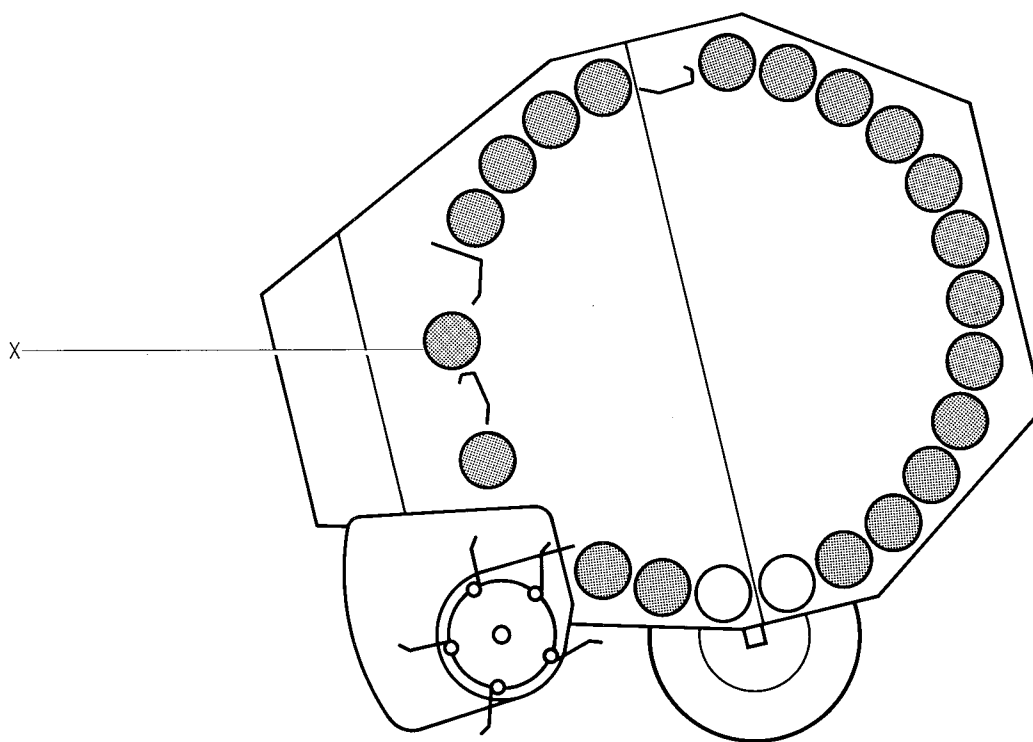
1	0934.18.16.00	roller chain 16B-1x65	1	22	1715.25.07.14	rod	1
2*	0934.65.07.00	connecting link 1S for No 1	1	23	3203.01.04.11	spring plate	8
3*	0934.60.90.00	cranket link H-16B-1 for No 1	1	24	0940.16.11.00	tension spring 7x34x110	4
4	0934.18.14.00	roller chain 16B-1x60 1S connecting	1	25	0907.10.12.00	hex. nut M12	4
5	0934.18.37.00	roller chain with 16B-1x94 1S one	1	26	0917.50.83.00	pin 12x30x25	2
6	0934.18.40.00	roller chain link each 16B-1x101 1S cpl.	1	27	0910.10.13.00	washer 13x24x2,5	2
7	0934.18.91.00	roller chain 16B-1x222C 1S	1	28	0916.10.97.00	split pin 4x25	2
8-9	1712.25.05.10	chain sprocket	1	29	1712.25.07.24	gauge	1
8	0309.56.00.00	chain sprocket 22 Z 16B-1	1	30	1715.25.08.11	rod	1
9	0922.12.59.00	ball bearing 6208-2RS	1	31-33	1712.25.09.01	guide roller cpl.	5
12	0910.73.10.00	shim 40x50x0,1	nB	31	1712.25.09.02	roller	5
	0910.73.12.00	shim 40x50x0,3	nB	32	0922.12.56.00	ball bearing 6205-2RS	5
13	0912.10.40.00	circlip 40x1,75	1	33	0912.15.52.00	circlip 52x2	5
14	0934.99.01.00	tension block 100x40x53	4	34	0912.10.25.00	circlip 25x1,2	5
15	0903.10.81.00	cup head bolt M10x75	4	35	0910.72.01.00	shim 25x35x0,1	nB
	0910.40.11.00	washer 11x34x3	4		0910.72.03.00	shim 25x35x0,3	nB
16	0907.60.10.00	safety nut NM10	4		0910.72.05.00	shim 25x35x1	nB
17-19	1712.25.08.01	lever cpl.	2	36	1715.25.08.23	gauge	1
17	1712.25.08.02	lever	2	37	1715.25.10.01	yoke bolt	1
18	0920.13.05.10	bush	2	38	1715.25.10.04	hub	1
19	0934.96.01.00	chain tension sprocket	2	39	0907.10.12.00	hex. nut M12	2
20	0912.10.26.00	circlip 25x1,5	2	40	0903.10.80.00	cup head bolt M10x70	1
21	0910.72.05.00	shim 25x35x1	nB	41	0910.15.11.00	washer 11x21x2	1
				42	0907.60.10.00	safety nut NM10	1
				42	0907.60.10.00	safety nut NM10	1
				41	0910.15.11.00	washer 11x21x2	1
				42	0907.60.10.00	safety nut NM10	1



AUTOMATIC CHAIN
LUBRICATION UNIT
(OPTIONAL EQUIPMENT)

1	0926.60.02.00	lubricating pump	1	15	0954.66.19.00	clip LA 12-20	2
2	0955.91.02.00	nut ALL4 M8x1	7	16	0926.60.16.00	tubing 12x1,5x600	1
3	0955.96.01.00	cutting ring LL 4	7	17*	0955.96.08.00	+cutting ring 12L	1
4	0955.34.43.00	adjustable angle connection EVW 12-LM M16x1,5 32/43	1	18	0926.60.19.00	polyamid tube	12m
5	0954.61.85.00	clamp 53,9	2	19	0926.60.14.00	cover tube 11x8x580	1
6	0901.20.70.00	hex. bolt M8x30	2	20	0926.60.18.00	insert bush	14
7	0907.60.08.00	safety nut NM8	2	21	0972.64.01.00	cable clip SST 1-5S	10
8-13	0926.60.03.00	tank cpl.	1	22	0972.62.11.00	chassis clamp 12x28	4
8	0926.60.04.00	tank	1	23	0926.60.17.00	oil brush RD15x100	7
9	0926.60.05.00	sieve	1	24	0955.10.21.00	angle connection	6
10	0926.60.06.00	cover	1	25	0955.10.20.00	straight connection GE 4-LLM M8x1	1
11	0926.60.07.00	outlet	1	26	0954.60.05.00	cable clip Ad.15	7
12	0926.60.08.00	hex. nut R1/2"	1	27	0901.20.47.00	hex. bolt M6x20	7
13	0926.60.09.00	seal DM21x30x2	1		0907.10.06.00	hex. nut M6	7
14	0926.60.12.00	tube 16x10x450	1		0911.10.06.00	spring washer A6	7

+ = only for subsequent fitting



1715-69

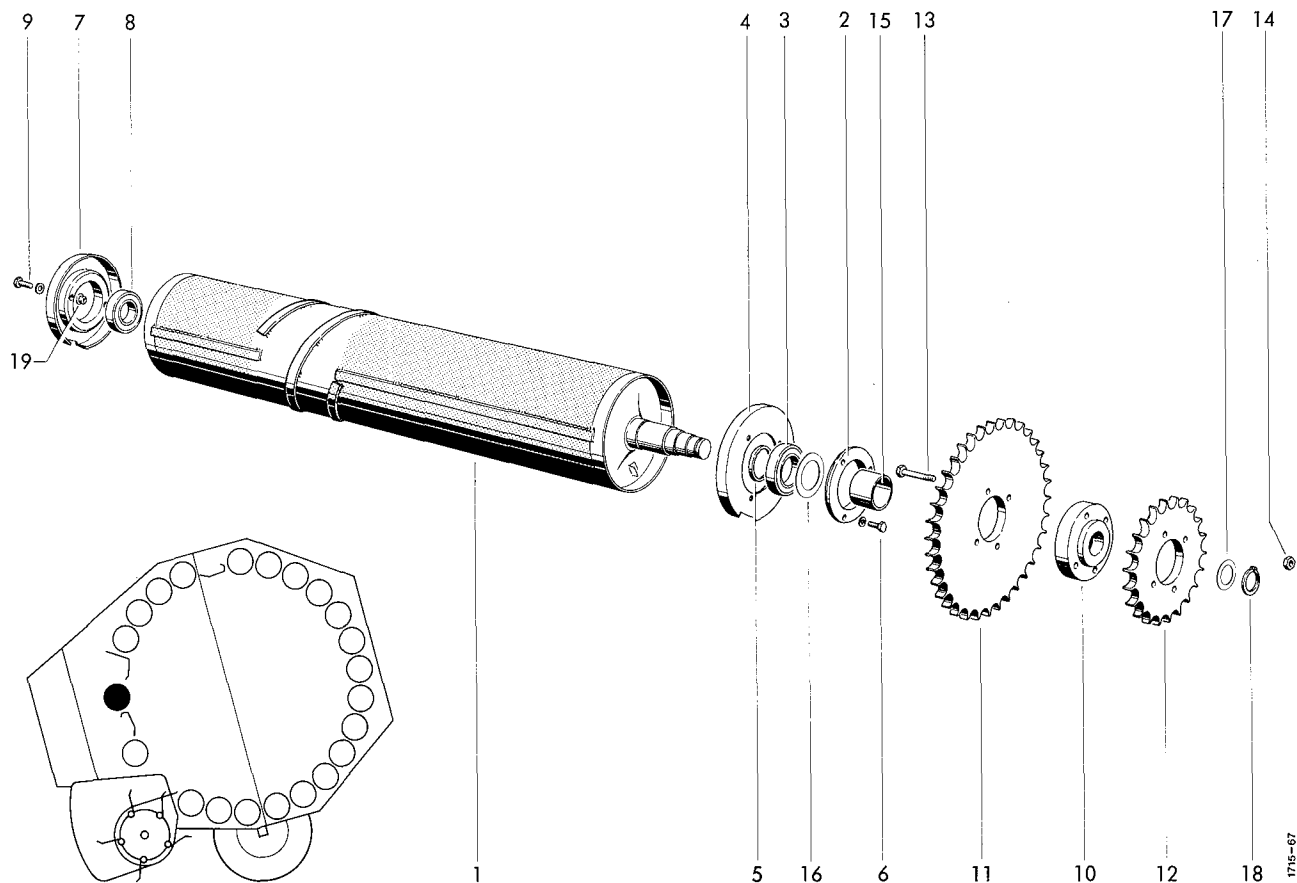
COATING

1* 0948.20.03.00 +set of coating

+ = re-coat signet roller only
roller X not in the spiral zone
o = for cross drive

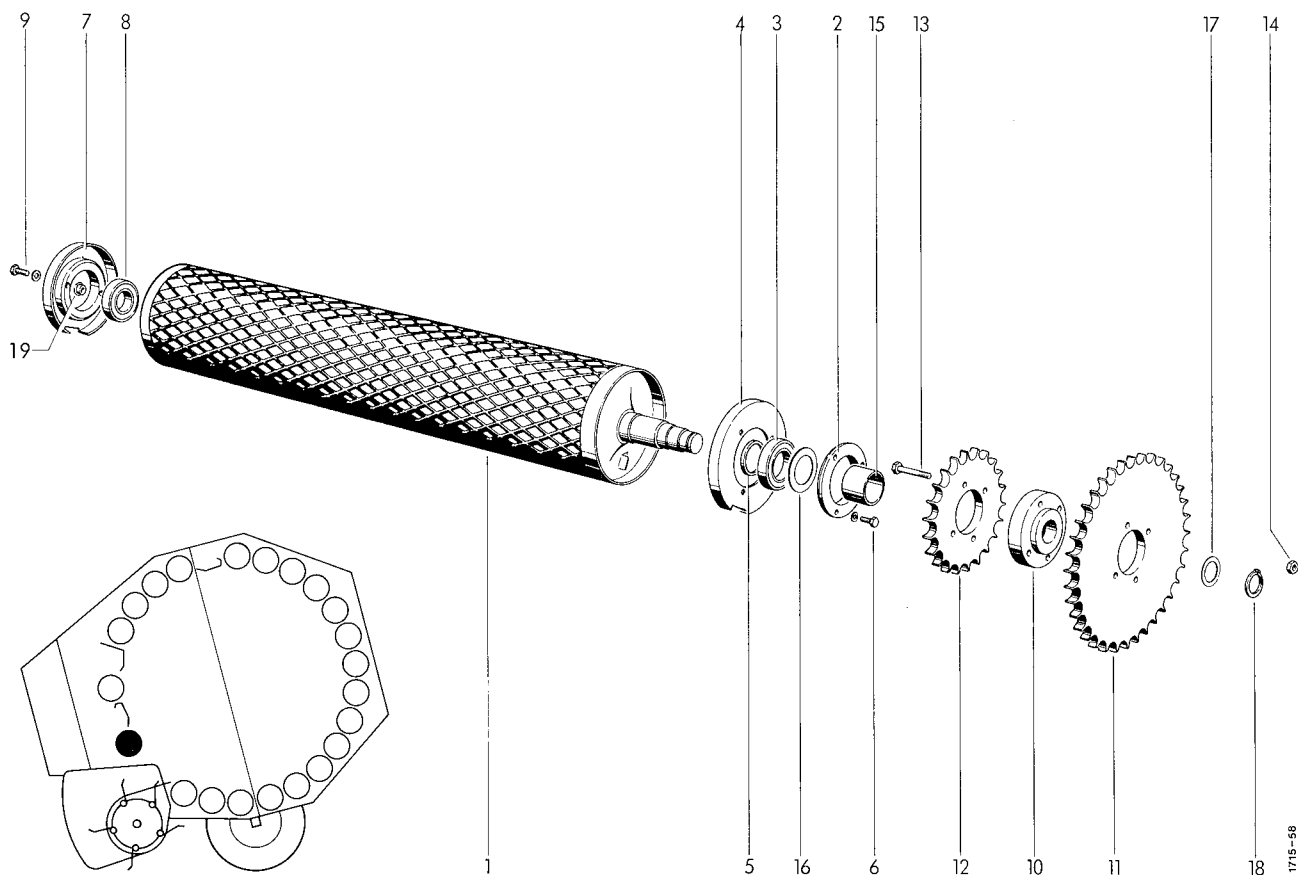
TOOLS WITH ACCESSORIES

1	2-6	0980.12.10.00	toolbag cpl.	1
	2*	0980.14.03.00	toolbag	1
	3*	0980.22.13.00	double spanner 13x17	1
	4*	0980.20.13.00	spanner 13	1
	5*	0980.22.17.00	double spanner 17x19	1
	6*	0980.40.06.00	angle screw driver 6	1
	7*	0926.94.10.00	chain lubricant 0,5 KG	1
	8*	0994.10.31.00	chock	2
	9*	0902.10.30.00	ocheese head bolt	9
	10*	0907.10.08.00	ohex. nut	18



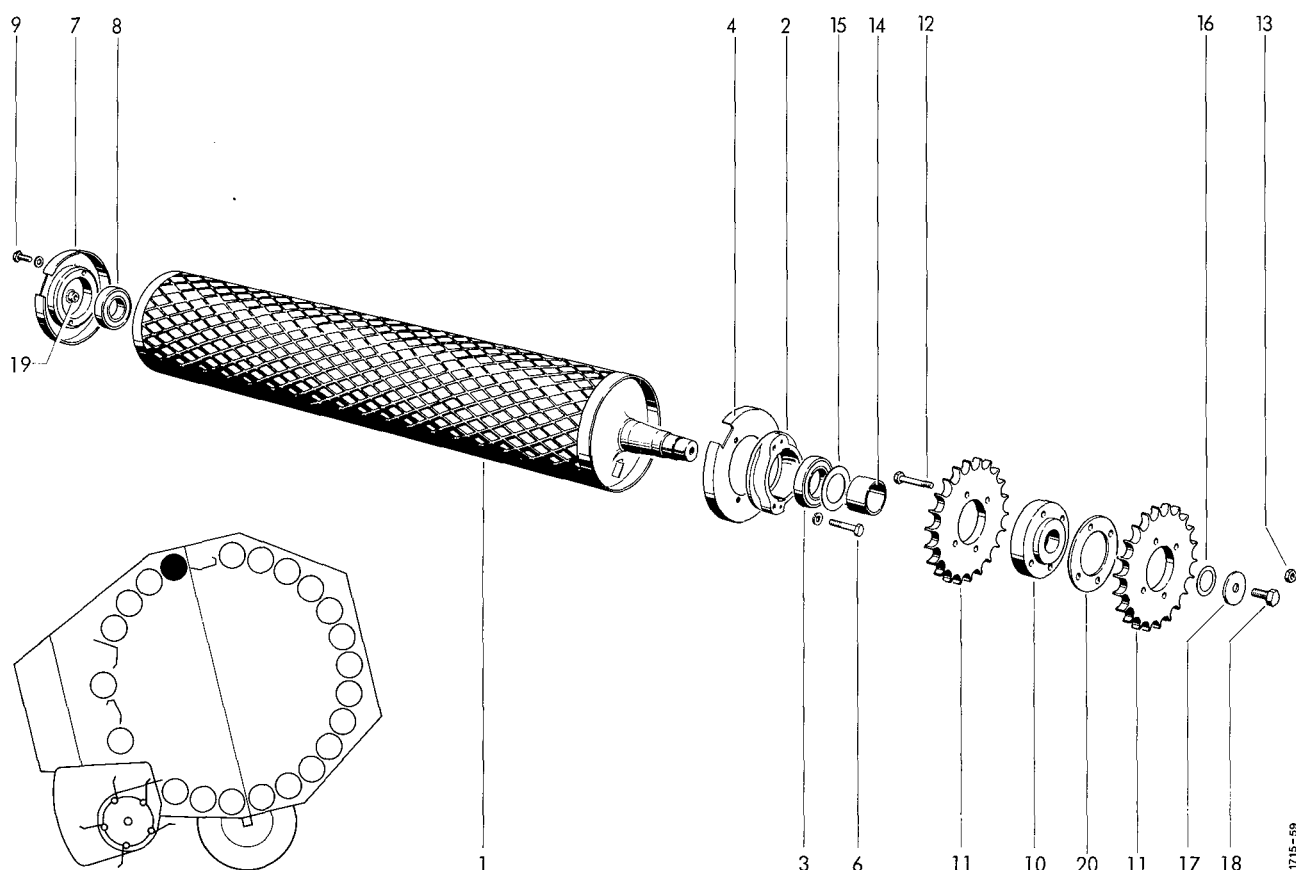
TOP MAIN DRIVE ROLLER

1	1712.14.05.01	roller	1	11	0309.42.00.00	chain sprocket 36 Z 16B-1	1
2+3	1712.14.02.01	flange bearing cpl.	1	12	0309.23.00.00	chain sprocket 22 Z 16B-1	1
2	0312.02.00.00	bearing ring	1	13	0901.11.47.00	hex. bolt M12x80	4
3	0922.12.95.00	ball bearing CB 210	1	14	0907.60.12.00	safety nut NM12	4
4	1712.14.02.05	sealing disc	1	15	1712.14.04.09	spacer bush	1
5	0328.63.00.00	distance ring	1	16	0910.73.70.00	shim 50x62x0,1	nB
6	0901.20.70.00	hex. bolt M8x30	3		0910.73.72.00	shim 50x62x0,3	nB
	0911.10.08.00	spring washer A8	3		0910.73.74.00	shim 50x62x1	nB
7	1712.14.03.01	bearing ring	1	17	0910.72.50.00	shim 30x42x0,1	nB
8	0922.12.87.00	ball bearing CB 207	1		0910.72.52.00	shim 30x42x0,3	nB
9	0901.21.10.00	hex. bolt M10x30	2		0910.72.53.00	shim 30x42x0,5	nB
	0910.60.10.00	washer 10,5x25x4	2	18	0912.10.30.00	circlip 30x1,5	1
10-14	1712.14.04.01	chain sprocket cpl.	1	19	0938.90.70.00	plug	1
10	1705.14.02.10	hub	1				



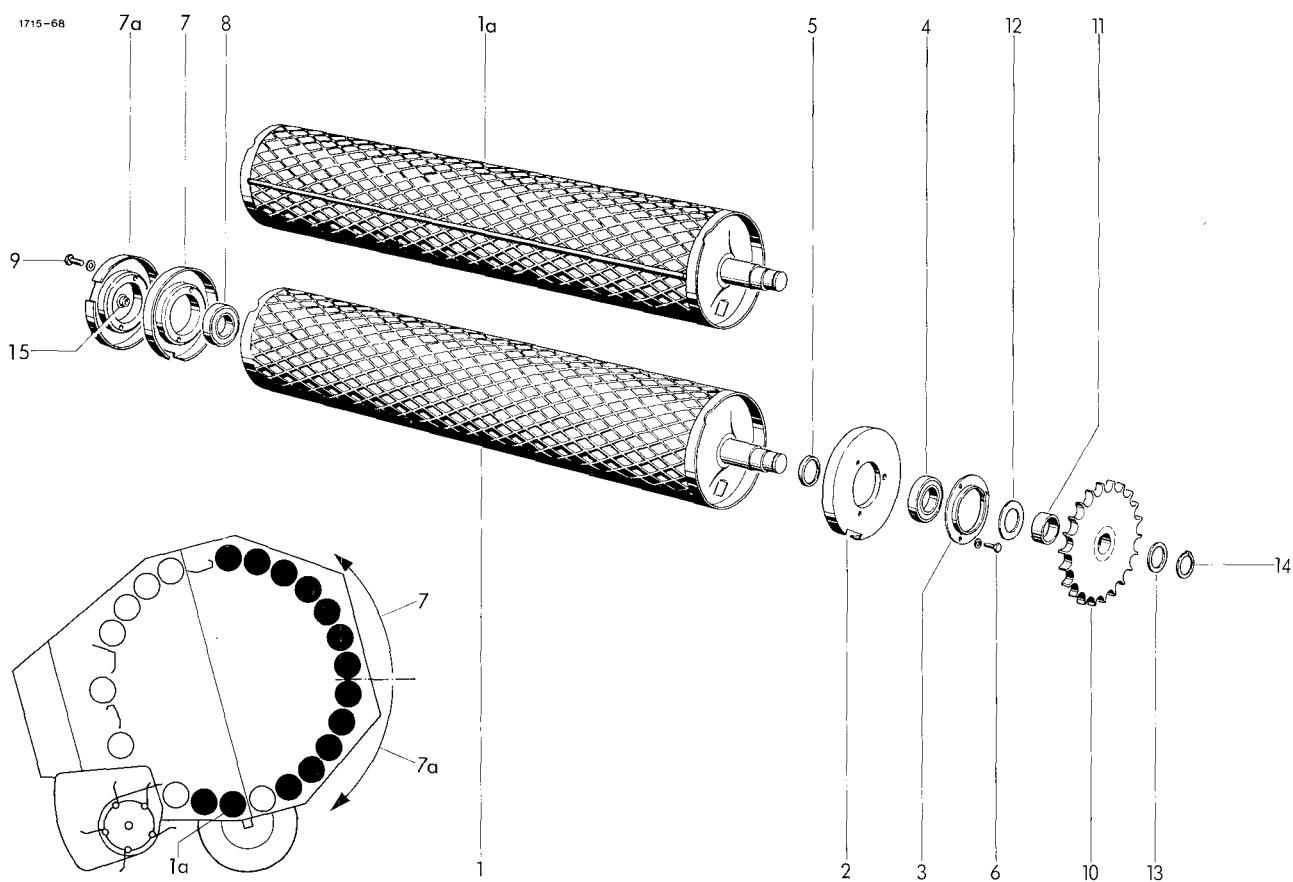
BOTTOM MAIN DRIVE ROLLER

1	1712.15.06.01	profil roller	1	11	0309.42.00.00	chain sprocket 36 Z 16B-1	1
2+3	1712.14.02.01	flange bearing cpl.	1	12	0309.23.00.00	chain sprocket 22 Z 16B-1	1
2	0312.02.00.00	bearing ring	1	13	0901.11.47.00	hex. bolt M12x80	4
3	0922.12.95.00	ball bearing CB 210	1	14	0907.60.12.00	safety nut NM12	4
4	1712.14.02.05	sealing disc	1	15	1712.14.04.09	spacer bush	1
5	0328.63.00.00	distance ring	1	16	0910.73.70.00	shim 50x62x0,1	nB
6	0901.20.70.00	hex. bolt M8x30	3		0910.73.72.00	shim 50x62x0,3	nB
	0911.10.08.00	spring washer A8	3		0910.73.74.00	shim 50x62x1	nB
7	1712.14.03.01	bearing ring	1	17	0910.72.50.00	shim 30x42x0,1	nB
8	0922.12.87.00	ball bearing CB 207	1		0910.72.52.00	shim 30x42x0,3	nB
9	0901.21.10.00	hex. bolt M10x30	2		0910.72.53.00	shim 30x42x0,5	nB
	0910.60.10.00	washer 10,5x25x4	2	18	0912.10.30.00	circlip 30x1,5	1
10-14	1712.15.04.01	chain sprocket cpl.	1	19	0938.90.70.00	plug	1
10	1705.14.02.10	hub	1				



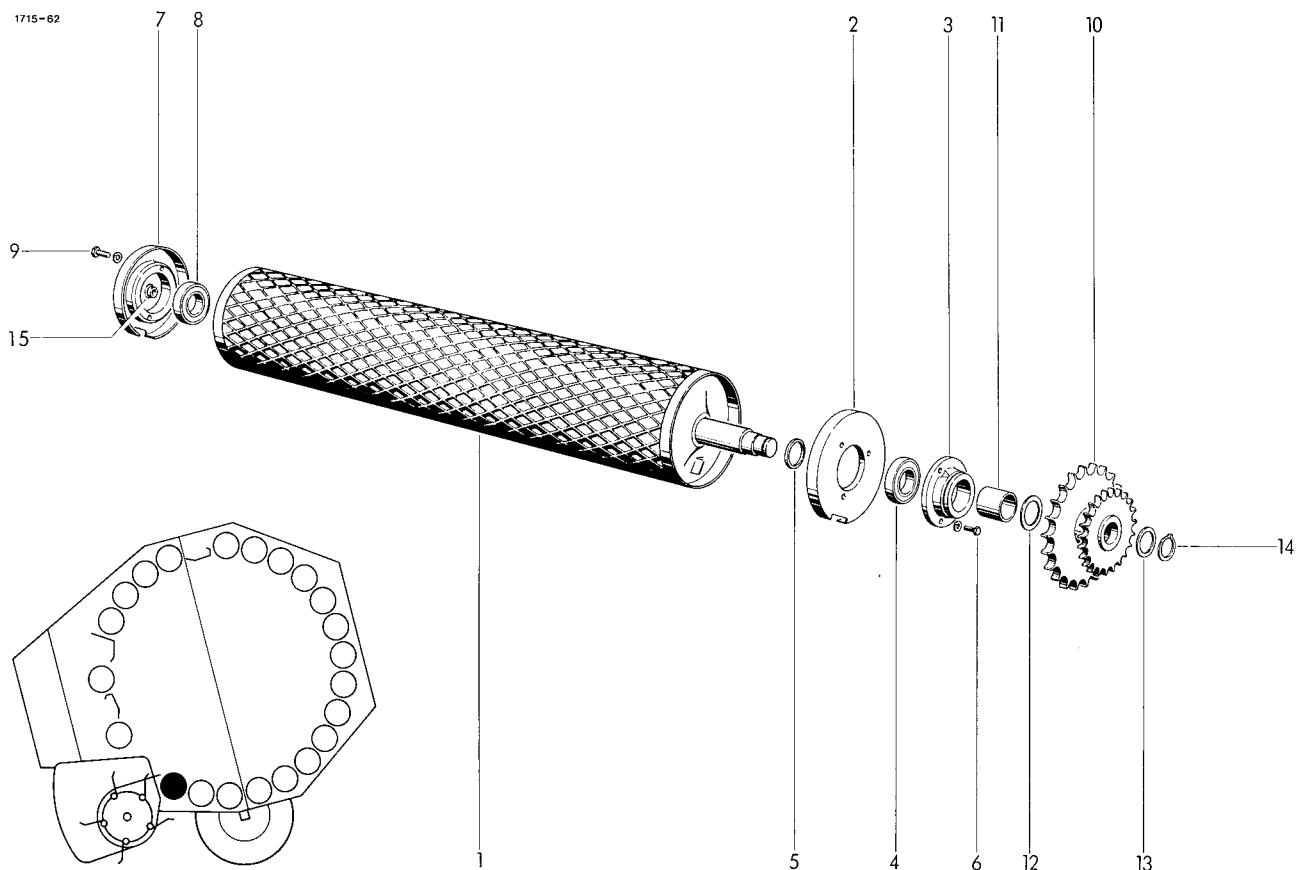
HINGED ROLLER

1	1712.16.06.01	segment roller	1	12	0901.11.47.00	hex. bolt M12x80	4
2+3	1712.16.02.01	flange bearing cpl.	1	13	0907.60.12.00	safety nut NM12	4
2	0712.29.00.00	bearing ring	1	14	1712.16.04.09	spacer bush	1
3	0922.12.95.00	ball bearing CB 210	1	15	0910.73.70.00	shim 50x62x0,1	nB
4	1712.14.02.05	sealing ring	1		0910.73.72.00	shim 50x62x0,3	nB
6	0901.10.61.00	hex. bolt M8x45	3		0910.73.74.00	shim 50x62x1	nB
	0911.10.08.00	spring washer A8	3	16	0910.72.50.00	shim 30x42x0,1	nB
7	1712.14.03.01	bearing ring	1		0910.72.52.00	shim 30x42x0,3	nB
8	0922.12.87.00	ball bearing CB 207	1		0910.72.53.00	shim 30x42x0,5	nB
9	0901.21.10.00	hex. bolt M10x30	2	17	0910.89.81.00	spring washer 12,5x45x5,6	1
	0910.60.10.00	washer 10,5x25x4	2	18	0901.30.85.00	hex. bolt M12x20	1
10-13	1712.16.04.01	chain sprocket cpl.	1	19	0938.90.70.00	plug	1
10	1705.14.02.10	hub	1	20	1712.16.04.15	shim 1mm	nB
11	0309.23.00.00	chain sprocket 22 Z 16B-1	2		1712.16.04.16	shim 2 mm	nB



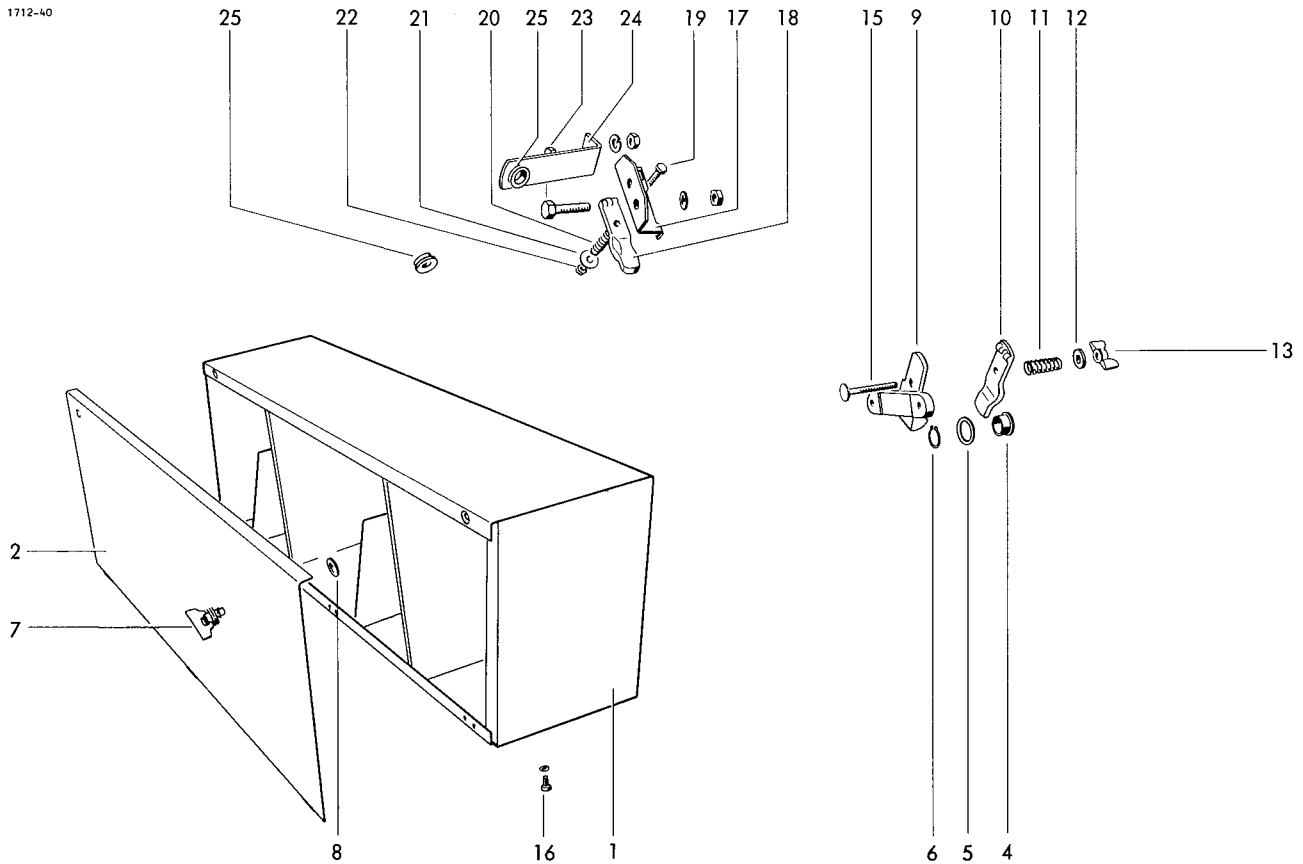
DRIVE ROLLER

1	1712.17.06.01	segment roller	13	10	1712.17.04.01	chain sprocket	14
1a	1712.21.07.01	profil roller	1	11	0328.43.00.00	spacer bush	14
2	1712.17.02.01	bearing flange	14	12	0910.73.10.00	shim 40x50x0,1	nB
3	1712.17.02.05	bearing cover	14		0910.73.12.00	shim 40x50x0,3	nB
4	0922.12.88.00	ball bearing CB 208	14		0910.73.14.00	shim 40x50x1	nB
5	0328.48.00.00	thrust ring	14	13	0910.72.50.00	shim 30x42x0,1	nB
6	0901.20.66.00	hex. bolt M8x20	42		0910.72.52.00	shim 30x42x0,3	nB
	0911.10.08.00	spring washer A8	42		0910.72.54.00	shim 30x42x1	nB
7	1712.14.03.01	bearing ring	7	14	0912.10.30.00	circlip 30x1,5	14
7a	1712.21.03.01	bearing ring	7	15	0938.90.70.00	plug	1
8	0922.12.87.00	ball bearing CB 207	14				
9	0901.21.10.00	hex. bolt M10x30	28				
	0910.60.10.00	washer 10,5x25x4	28				



BOTTOM ROLLER

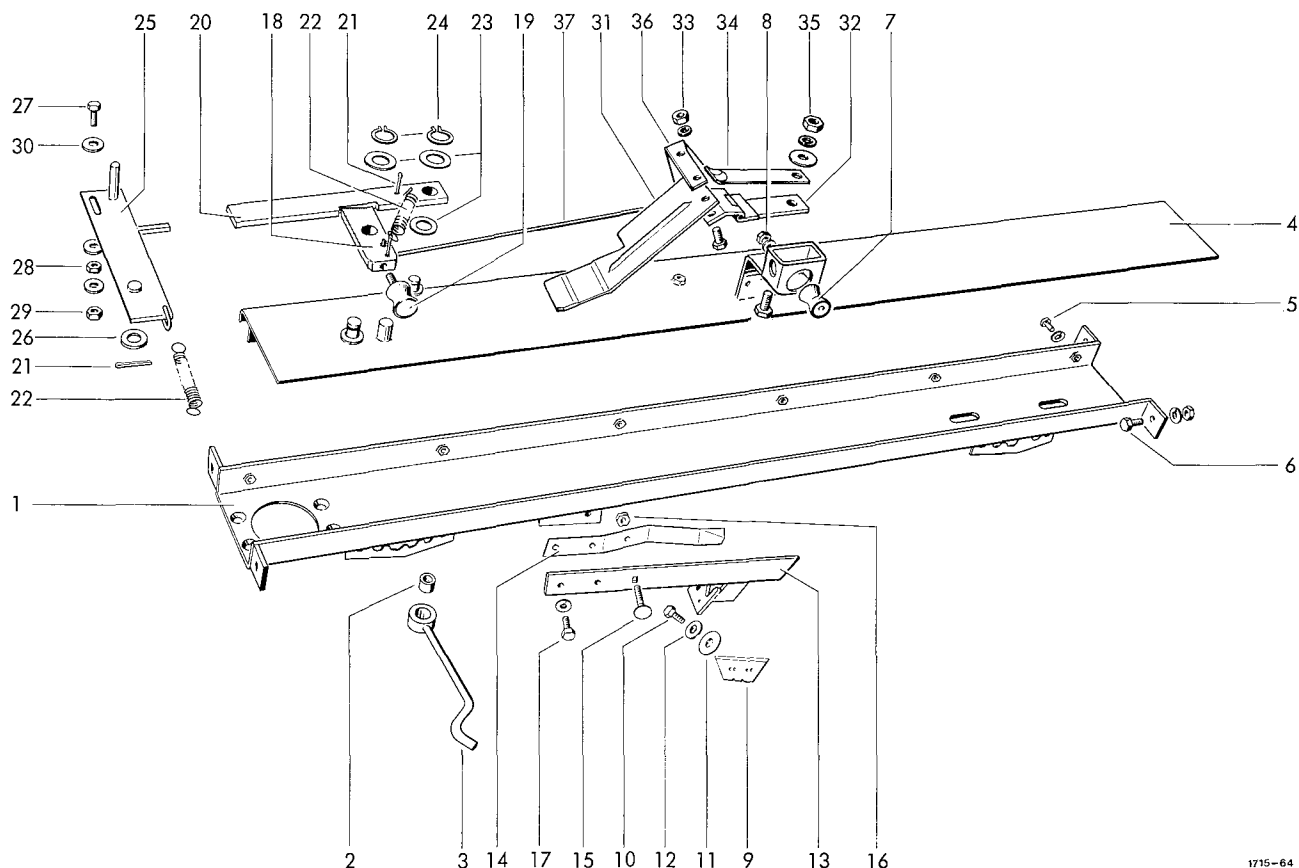
1	1712.19.07.01	segment roller	1	10	1712.19.04.01	chain sprocket	1
2	1712.17.02.01	bearing flange	1	11	1712.18.04.05	spacer bush	1
3	0712.30.00.00	bearing ring	1	12	0910.73.10.00	shim 40x50x0,1	nB
4	0922.12.88.00	ball bearing CB 208	1		0910.73.12.00	shim 40x50x0,3	nB
5	0328.48.00.00	thrust ring	1		0910.73.14.00	shim 40x50x1	nB
6	0901.20.70.00	hex. bolt M8x30	3	13	0910.72.50.00	shim 30x42x0,1	nB
	0911.10.08.00	spring washer A8	3		0910.72.52.00	shim 30x42x0,3	nB
7	1712.14.03.01	bearing ring	1		0910.72.54.00	shim 30x42x1	nB
8	0922.12.87.00	ball bearing CB 207	1	14	0912.10.30.00	circlip 30x1,5	1
9	0901.21.10.00	hex. bolt M10x30	2	15*	0938.90.70.00	plug	1
	0910.60.10.00	washer 10,5x25x4	2				



TWINE BOX

1	1712.27.01.01	box	1	15	0903.10.26.00	cup head bolt M6x70	1
2	1712.27.01.12	cover	1	16	0901.20.66.00	hex. bolt M8x20	6
3*	0902.50.44.00	countersunk bolt M6x16 for No 2	6		0907.10.08.00	hex. nut M8	6
	0907.10.06.00	hex.nut M6	6		0910.10.08.00	washer 8,4x17x1,6	6
	0910.10.06.00	washer 6,4x12,5x1,6	6		0911.10.08.00	spring washer A8	6
	0911.10.06.00	spring washer A6	6				
4	0361.08.00.00	twine guide eye	1				
5	0910.80.92.00	washer 20,5x30x3	1	17-22	1712.34.07.01	twine tensioner cpl.	1
6	0912.10.20.00	circlip 20x1,2	1	17	1712.34.07.02	tension plate	1
7	0919.48.97.00	cover lock	2	18	0761.03.00.00	twine tensioner, top part	1
8	0919.48.89.00	holding washer	2	19	0901.20.54.00	hex. bolt M6x45	1
9-15	1101.22.14.00	twine tensioner	1	20	0940.10.71.00	tension spring 1,4x12,4x40	1
9	0761.02.00.00	twine tensioner, bottom part	1	21	0910.40.06.00	washer 6,6x22x2	1
10	0761.03.00.00	twine tensioner, top part	1	22	0907.60.06.00	safety nut NM6	1
11	0940.10.71.00	tension spring 1,4x12,4x40	1	23	0901.21.06.00	hex. bolt M10x20	3
12	0910.15.06.00	washer 6,6x12,5x1,6	1		0907.10.10.00	hex. nut M10	3
13	0908.31.06.00	wing nut M6	1		0911.10.10.00	spring washer A10	3
14*	0902.24.67.00	cheese head bolt M6x20 for No 9	2	24	1712.34.07.12	guide arm	1
	0907.10.06.00	hex.nut M6	2	25	0361.08.00.00	twine guide eye	2
	0910.15.06.00	washer 6,6x12,5x1,6	2	26*	0912.10.20.00	circlip 20x1,2 for No 25	2
	0911.10.06.00	spring washer A6	2				

TWINE GUIDE



1715-64

HOUSING FOR TYING UNIT

1	1712.34.01.01	beam
2+3	1712.34.01.15	range spacer
2	0920.39.90.00	torsion roller
3	1712.34.01.17	hook
4	1712.34.01.20	cover shield
5	0901.20.66.00	hex. bolt M8x20
	0911.10.08.00	spring washer A8
6	0901.21.08.00	hex. bolt M10x25
	0907.10.10.00	hex. nut M10
	0911.10.10.00	spring washer A10
7	0924.53.60.00	guide roller M6x16x25
8	0907.10.06.00	hex. nut M6
	0911.10.06.00	spring washer A6

CUTTING UNIT

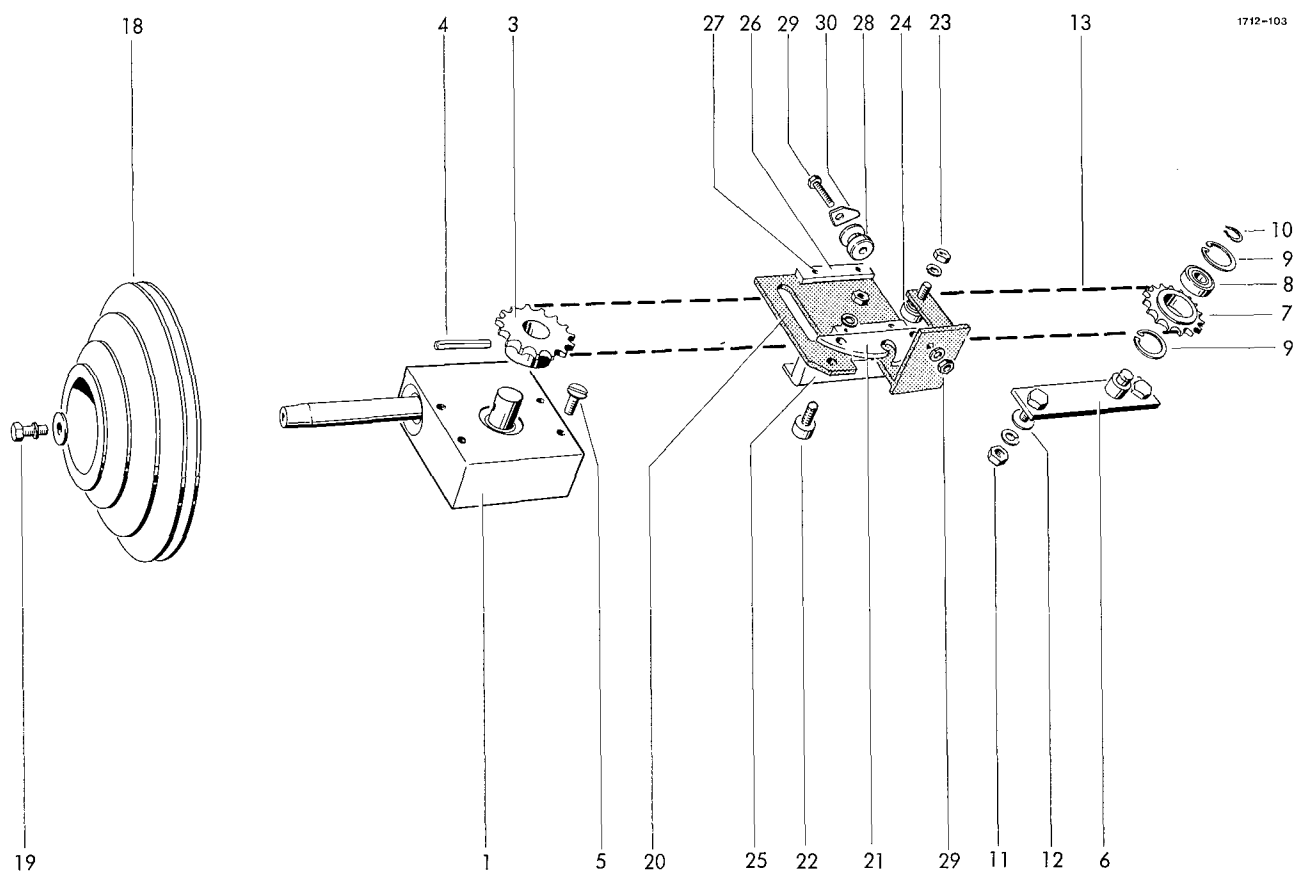
9	0982.40.01.00	knife 19x60x0,6
10	0901.20.42.00	hex. bolt M6x10
11	0940.88.06.00	cup spring 20x8,2x0,7
12	0910.10.06.00	washer 6,4x12,5x1,6
13	1712.34.04.21	lever
14	0940.65.37.00	leaf spring 25x2x240
15	0903.10.18.00	cup head bolt M6x30
16	0907.56.06.00	safety nut M6
17	0901.20.66.00	hex. bolt M8x20
	0911.10.08.00	spring washer A8

TRIPPING MECHANISM

1	18	1712.34.05.02	trip lever	1
2	19	0924.53.60.00	guide roller M6x16x25	1
2	20	1712.34.05.05	stop lever	1
2	21	0916.10.95.00	split pin 4x20	3
6	22	0940.20.48.00	tension spring	2
6	23	0910.10.13.00	washer 13x24x2,5	3
6	24	0912.10.12.00	circlip 12x1	2
4	25	1712.34.05.10	tripping plate	1
4	26	0910.15.14.00	washer 14x24x2,5	1
4	27	0901.20.70.00	hex. bolt M8x30	1
1	28	0907.10.08.00	hex. nut M8	1
1	29	0907.56.08.00	hex. nut M8	1
1	30	0910.10.08.00	washer 8,4x17x1,6	3

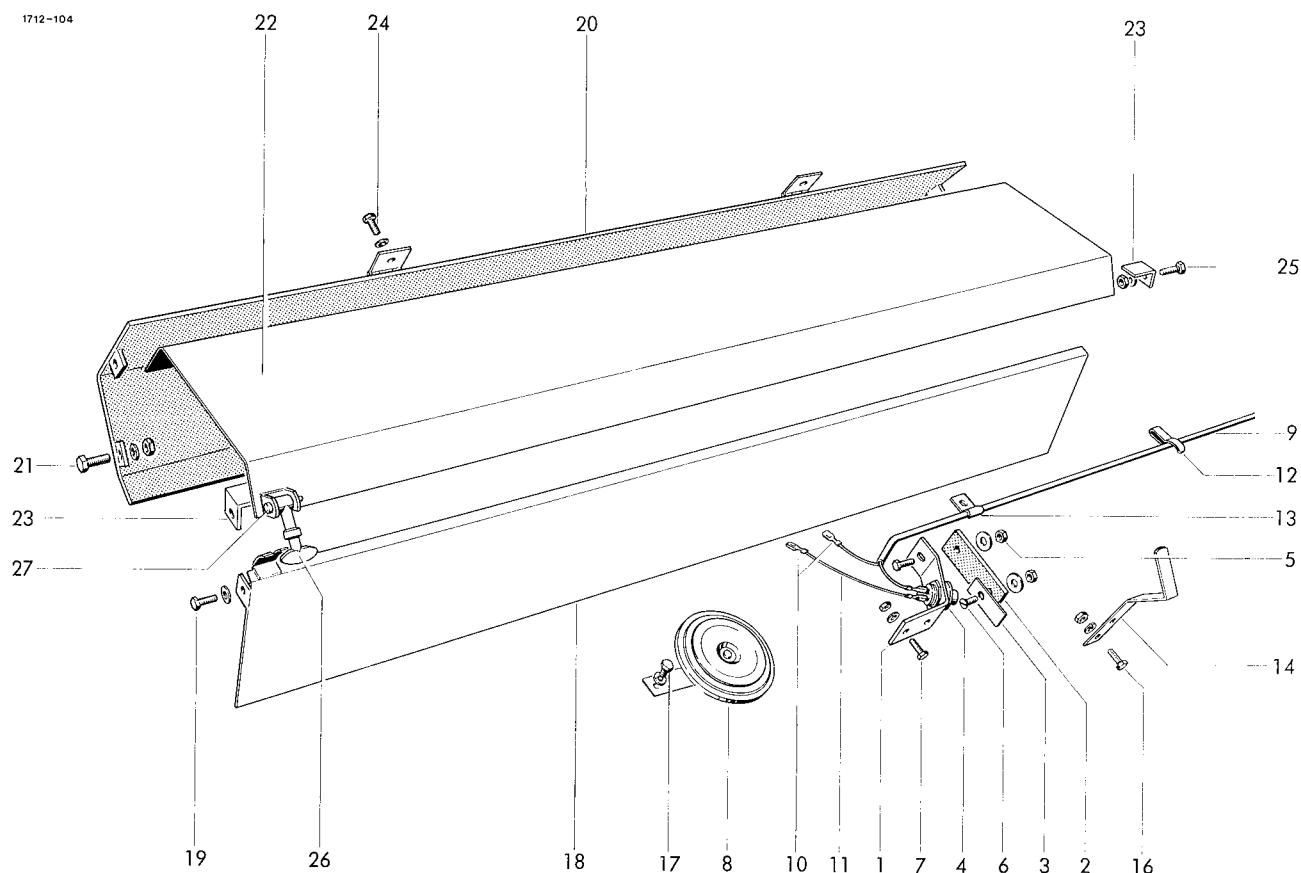
TWINE THROWER

1	31	1712.34.09.04	thrower	1
1	32	1712.34.09.05	hinge	1
1	33	0901.20.45.00	hex. bolt M6x16	2
1		0907.60.06.00	safety nut NM6	2
1		0910.10.06.00	washer 6,4x12,5x1,6	2
1	34	0940.64.92.00	leaf spring 22x1	1
1	35	0901.20.66.00	hex. bolt M8x20	1
1		0907.10.08.00	hex. nut M8	1
2		0910.80.18.00	washer 9x25x2	1
2		0911.10.08.00	spring washer A8	1
	36	1712.34.09.18	angle	1
	37	1712.34.09.19	lever	1



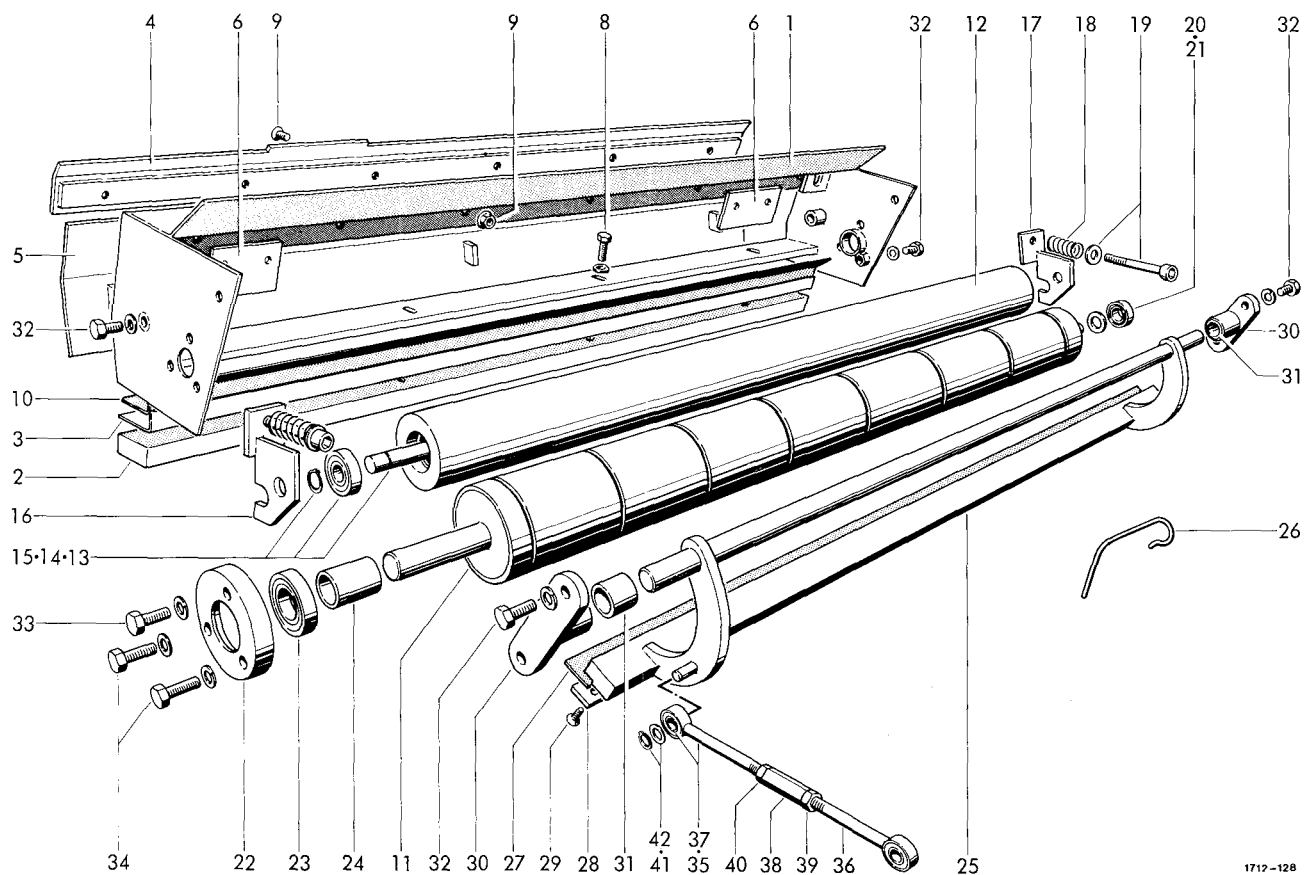
DRIVE

1	0928.30.01.00	gear box with No 2	1	19	0901.20.68.00	hex. bolt M8x25	1
2*	0926.76.11.00	breather M10x1 for No 1	1		0910.40.09.00	washer 9x28x3	1
3	0308.26.00.00	chain sprocket 15 Z 08B-1	1		0911.10.08.00	spring washer A8	1
4	0915.51.58.00	expanding pin 6x40	1				
5	0902.50.65.00	countersunk bolt M8x20	4				
6	1712.34.02.17	tension block	1				
7-9	1712.34.02.21	chain sprocket cpl.	1	20	1712.34.03.01	base plate	1
7	0309.47.00.00	chain sprocket 15 Z 08B-1	1	21	1712.34.03.07	impacter plate	1
8	0922.12.51.00	ball bearing 6201-2RSR	1	22	0924.51.18.00	roller	3
9	0912.15.32.00	circlip 32x1,2	2	23	0907.10.08.00	hex. nut M8	3
10	0912.10.12.00	circlip 12x1	1		0911.10.08.00	spring washer A8	3
11	0907.10.10.00	hex. nut M10	2	24	0910.10.08.00	washer 8,4x17x1,6	3
	0911.10.10.00	spring washer A10	2	25	1712.34.03.17	guide piece	1
12	0910.60.10.00	washer 10,5x25x4	2	26	1712.34.03.14	support plate	2
13	0934.15.80.00	roller chain 08B-1x173E+H	1	27	0915.40.32.00	ribbet nail	4
14*	0934.60.27.00	inner link B-08B-1	1	28	1712.34.03.20	roller	1
15*	0934.61.07.00	inner link E-08B-1	1	29	0901.10.22.00	hex. bolt M6x50	1
16*	0934.60.87.00	cranked link H-08B-1	1		0907.10.06.00	hex. nut M6	1
		for No 13	1		0911.10.06.00	spring washer A6	1
17*	0934.15.81.00	connecting link with roller	1	30	1712.34.03.23	stop	1
18	0936.99.80.00	stepped pulley	1				



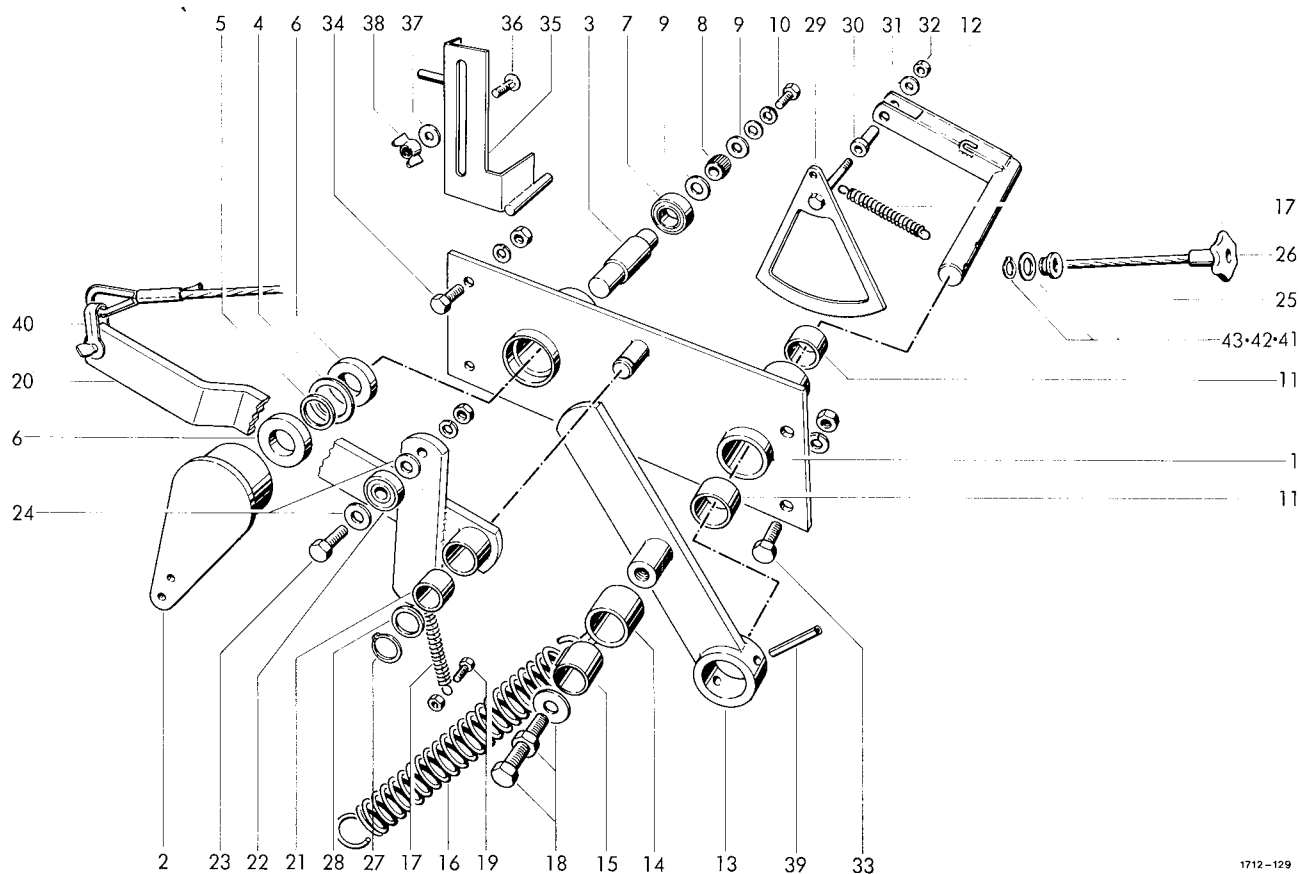
SIGNALING DEVICE

1-6	1712.34.06.01	switch cpl.	1	17	0901.20.61.00	hex. bolt M8x10	1
1	1712.34.06.02	holder	1		0911.10.08.00	spring washer A8	1
2	1712.34.06.03	link	1				
3	1712.34.06.04	strip	1			GUARDS	
4	0971.34.01.00	pressure switch	1				
5	0901.20.45.00	hex. bolt M6x16	1	18	1712.34.08.01	guide shield	1
	0907.10.06.00	hex. nut M6	1	19	0901.20.66.00	hex. bolt M8x20	2
	0910.40.06.00	washer 6,6x22x2	1		0907.10.08.00	hex. nut M8	2
6	0902.50.44.00	countersunk bolt M6x16	1		0911.10.08.00	spring washer A8	2
	0907.10.06.00	hex. nut M6	1		0910.40.09.00	washer 9x28x3	2
	0910.40.06.00	washer 6,6x22x2	1	20	1715.34.08.08	cover shield	1
7	0901.20.45.00	hex. bolt M6x16	2	21	0901.21.08.00	hex. bolt M10x25	4
	0907.10.06.00	hex. nut M6	2		0907.10.10.00	hex. nut M10	4
	0911.10.06.00	spring washer A6	2		0911.10.10.00	spring washer A10	4
8	0971.26.80.00	signal horn	1	22	1715.34.08.15	cover	1
9	0972.19.05.00	crank with No 10	1	23	1712.34.08.16	stop	2
10	0972.38.81.00	connector	4	24	0901.20.64.00	hex. bolt M8x16	2
11	0972.10.01.00	cable cpl. with No 10	1		0907.10.08.00	hex. nut M8	2
12	0972.62.11.00	chassis clamp 12x28	2		0910.80.18.00	washer 9x25x2	2
13	0938.50.08.00	cable clip R4	2		0911.10.08.00	spring washer A8	2
14	1712.34.06.29	angle	1	25	0901.21.06.00	hex. bolt M10x20	1
16	0901.20.42.00	hex. bolt M6x10	1		0907.10.10.00	hex. nut M10	1
	0907.10.06.00	hex. nut M6	1		0911.10.10.00	spring washer A10	1
	0911.10.06.00	spring washer A6	1	26	0938.20.40.00	cover lock	1
				27	0918.20.04.00	pin with washer a. split pin	1



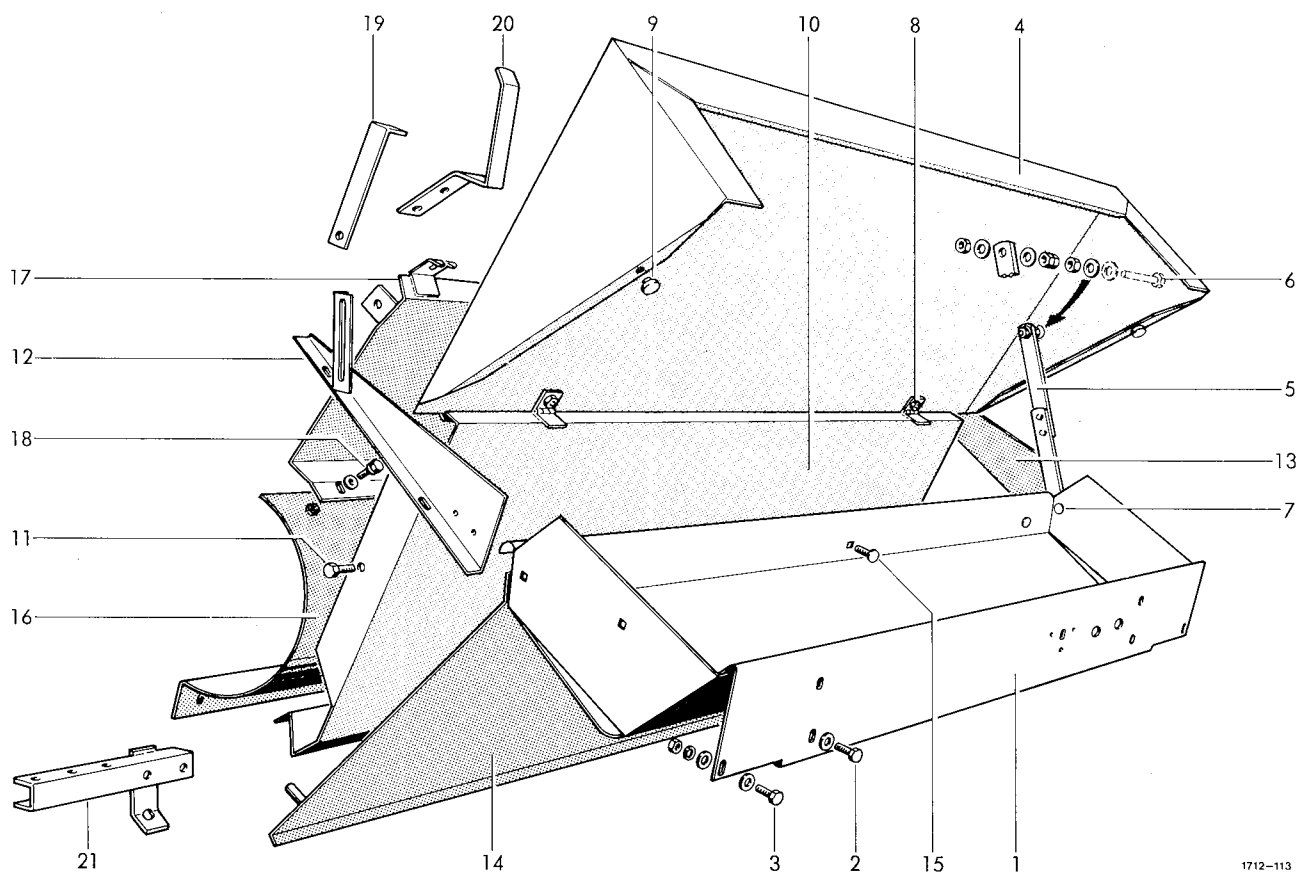
TYING BEAM

1	1712.37.01.01	beam	1	23	0922.19.18.00	ball bearing	1
2	1712.37.01.10	anvil	1	24	1712.37.01.47	spacer tube	1
3	1712.37.01.11	angle	1	25	1712.37.01.49	knife beam	1
4	1712.37.01.84	stripping device	1	26	0940.51.18.00	spring	8
5	1712.37.01.80	cover shield	1	27	1712.37.01.54	knife	1
6	1712.37.01.83	plate	2	28	1712.37.01.55	bracket	1
7*	0902.60.44.00	countersunk bolt M8x25 for No 6	29	0902.60.34.00	cheese head bolt M6x20	1	
8	0901.30.68.00	hex. bolt Verbus plus	4	30	1712.37.01.58	flange bearing mit Nr.31	2
	0910.10.10.00	washer 10,5x21x2	4	31	1712.37.01.62	bush	2
9	0902.60.44.00	countersunk bolt M8x25	4	32	0901.21.06.00	hex. bolt M10x20	6
	0907.81.08.00	safety nut M8	6		0911.10.10.00	spring washer A10	6
10	1712.37.01.16	stripping device	6	33	0901.21.11.00	hex. bolt M10x35	1
11	1712.37.01.18	roller	1		0911.10.10.00	spring washer A10	1
12-15	1712.37.01.24	pressing roller	1	34	0901.21.12.00	hex. bolt M10x40	2
12	1712.37.01.25	roller	1		0911.10.10.00	spring washer A10	2
13	1712.37.01.28	shaft	1				
14	0922.11.53.00	ball bearing 6202-27	1			JOINT PARTS	
15	0912.50.12.00	safety washer 12	2	35-40	1715.37.04.01	piston rod cpl.	1
16	1712.37.01.32	clamping device right	1	35	1712.37.04.02	eye bolt	1
17	1712.37.01.35	clamping device left	1	36	1715.37.04.06	eye bolt	1
18	0940.12.70.00	compression spring	2	37	0920.39.92.00	bush	2
19	0902.10.33.00	cheese head bolt M8x65	2	38	0908.81.04.00	nut SPM12	1
	0910.10.08.00	washer 8,4x17x1,6	2	39	0907.10.12.00	hex. nut M12	1
20	0922.12.81.00	ball bearing 3001-2RS1	1	40	0907.10.13.00	hex. nut M12 li	1
21	0910.89.14.00	washer	1	41	0912.50.10.00	safety washer 10	1
22	1712.37.01.45	bearing	1	42	0910.10.13.00	washer 13x24x2,5	1



CONTROL MECHANISM

1-11	1712.37.02.01	control plate cpl.	1	22	0924.50.06.00	roller 8x24x7	1
1	1712.37.02.02	control plate	1	23	0901.20.68.00	hex. bolt M8x25	1
2	1712.37.02.08	control lever	1		0907.10.08.00	hex. nut M8	1
3	1712.37.02.12	shaft	1		0911.10.08.00	spring washer A8	1
4	0925.38.24.00	felt washer	1	24	0910.70.43.00	shim 8x14x0.5	2
5	0910.71.34.00	shim	2	25-26	0936.49.80.00	rope pull cpl. 8x4200	1
6	0924.54.02.00	free-wheeling KK 17	2	25	0936.78.02.00	rope 8x4200	1
7	0922.12.54.00	ball bearing 6203-2RS	1	26	0939.17.01.00	star grip	1
8	0362.09.00.00	roller	1	27	0912.10.16.00	safety ring 16x1	1
9	0910.80.24.00	washer 10,2x25x2,5	2	28	0910.71.29.00	shim	1
10	0901.20.45.00	hex. bolt M6x16	1	29	1712.37.02.68	segment	1
	0910.64.06.00	washer 6,4x18x1,6	1	30	1712.37.02.72	bush	1
	0911.10.06.00	spring washer A6	1	31	0910.64.06.00	washer 6,4x18x1,6	1
11	0920.70.25.00	bush 25x30x20	2	32	0907.60.06.00	safety washer NM6	1
12	1712.37.02.25	knuckle joint	1	33	0901.21.49.00	hex. bolt M12x30	2
13	1712.37.02.31	lever	1		0907.10.12.00	hex. nut M12	2
14+15	1712.37.02.36	hinge cpl.	1		0911.10.12.00	spring washer A12	2
14	1712.37.02.37	hinge	1	34	0901.21.08.00	hex. bolt M10x25	2
15	0920.12.33.00	bush 20x25x22	1		0907.10.10.00	hex. nut M10	2
16	0940.25.21.00	tension spring	1		0911.10.10.00	spring washer A10	2
17	0940.20.48.00	tension spring	2	35	1712.37.02.85	bevelled plate	1
18	0901.11.42.00	hex. bolt M12x55	1	36	0903.10.42.00	cup head bolt M8x25	1
	0907.10.12.00	hex. nut M12	1	37	0910.80.18.00	washer 9x25x2	1
	0910.10.13.00	washer 13x24x2,5	1	38	0908.31.08.00	wing nut M8	1
19	0901.20.47.00	hex. bolt M6x20	1	39	0915.51.85.00	expanding pin 8x40	1
	0907.60.06.00	safety nut NM6	1	40	0936.99.73.00	shackles	1
20-24	1712.37.02.51	lever cpl.	1	41	0361.08.00.00	twine guide eye	1
20	1712.37.02.52	arm	1	42	0910.80.92.00	washer 20,5x30x3	1
21	0920.11.25.00	bush 16x20x27,5	1	43	0912.10.20.00	safety ring 20x1,2	1



1712-113

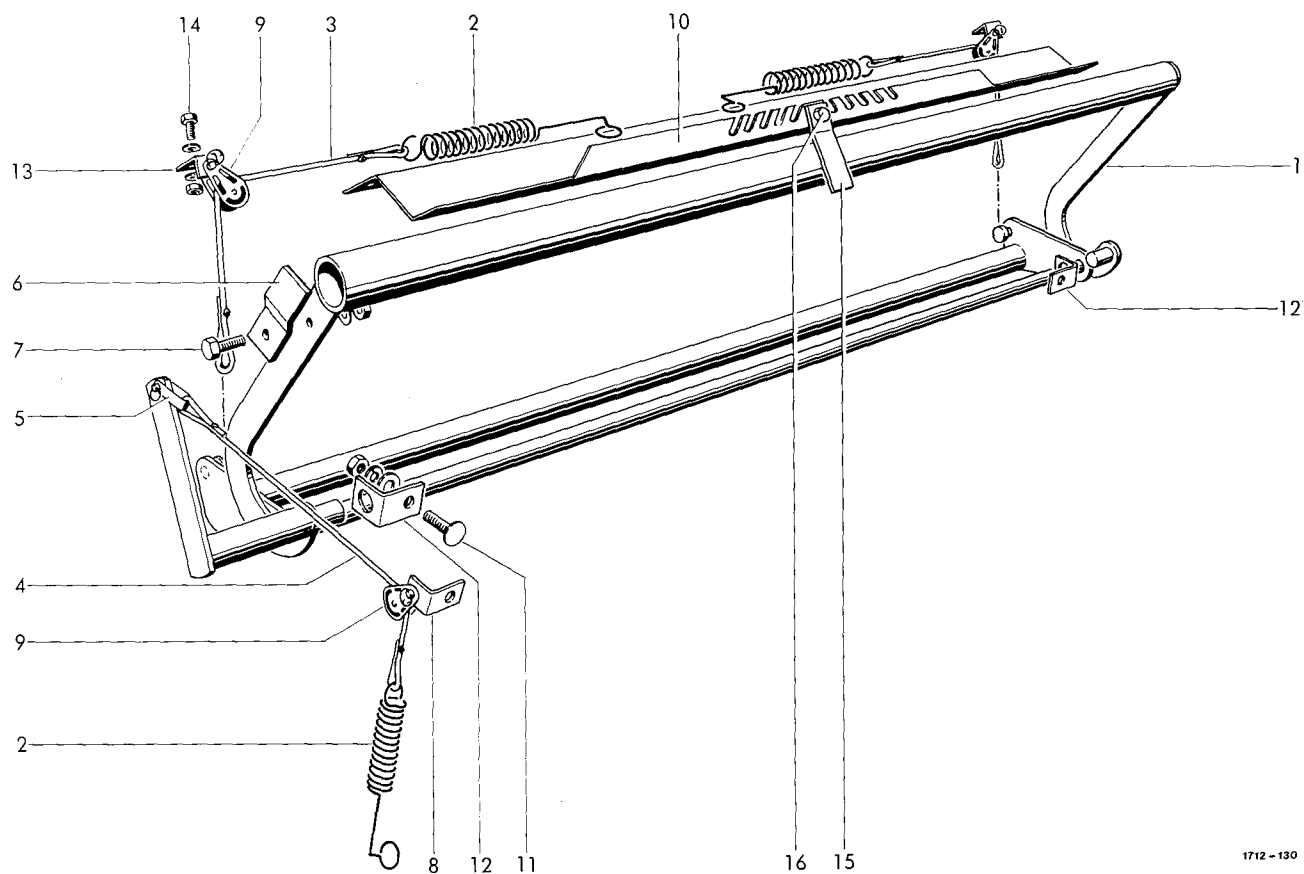
NET CONTAINER

1	1712.37.05.01	net container	1	9	0938.98.59.00	buffer	2
2	0901.20.68.00	hex. bolt M8x25	4	10	1715.37.06.25	guard	1
	0907.10.08.00	hex.nut M8	4	11	0901.21.06.00	hex. bolt M10x20	4
	0910.40.09.00	washer 9x28x3	4		0907.10.10.00	hex. nut M10	4
	0911.10.08.00	spring washer A8	4		0911.10.10.00	spring washer A10	4
3	0901.20.66.00	hex. bolt M8x20	2	12	1712.37.06.35	guard	1
	0907.10.08.00	hex.nut M8	2	13	1712.37.06.39	guard	1
	0910.40.09.00	washer 9x28x3	4	14	1712.37.06.41	running-in plate	1
	0911.10.08.00	spring washer A8	2	15	0903.10.40.00	cup head bolt M8x16	1
					0907.10.08.00	hex. nut M8	1
					0910.15.11.00	washer 11x21x2	1
					0911.10.08.00	spring washer A8	1

GUARDS

4	1715.37.06.01	hood	1				
5	1712.37.06.06	hood bracket	1				
6	0901.20.53.00	hex. bolt M6x40	1				
	0907.10.06.00	hex. nut M6	3	16	1715.37.07.01	cover shield	1
	0907.60.06.00	safety nut NM6	1	17	1712.37.07.05	lead plate	1
	0910.40.06.00	washer 6,6x22x2	4	18	0901.20.42.00	hex. bolt M6x10	6
7	0903.10.15.00	cup head bolt M6x16	1		0910.10.06.00	washer 6,4x12,5x1,6	12
	0907.60.06.00	safety nut NM6	1		0911.10.06.00	spring washer A6	6
	0910.10.08.00	washer 8,4x17x1,6	1	19	1715.37.09.01	angle	2
	0910.40.06.00	washer 6,6x22x2	1	20	1715.37.09.03	angle	1
8	0901.20.66.00	hex. bolt M8x20	2	21	1715.37.09.05	clamping iron	1
	0907.10.08.00	hex. nut M8	2				
	0910.40.09.00	washer 9x28x3	2				
	0911.10.08.00	spring washer A8	2				

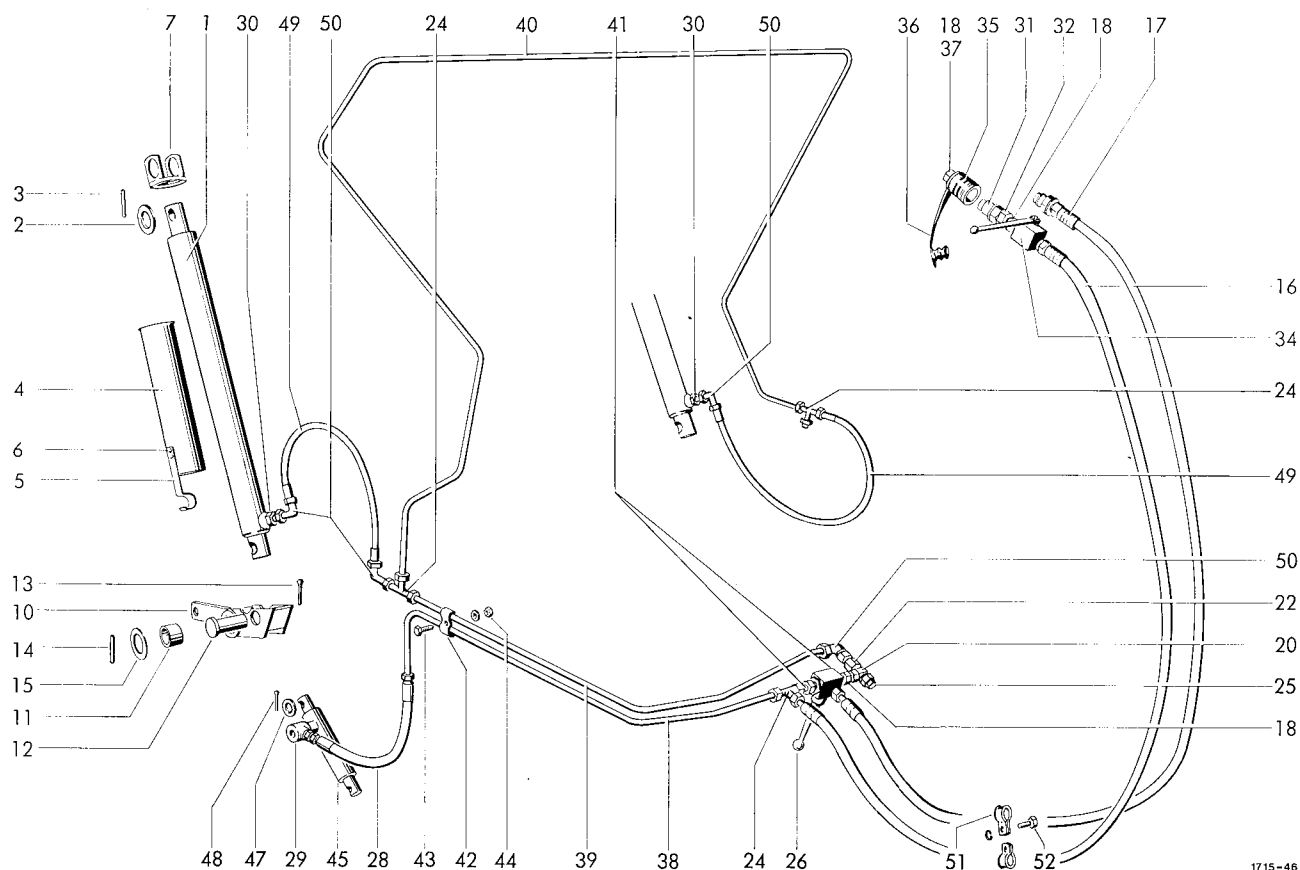
RACEWAY



1712 - 130

NET BRAKE

1	1712.37.08.01	net brake	1	13	1712.37.06.52	angle	2
2	0940.22.31.00	tension spring	3	14	0901.20.45.00	hex. bolt M6x16	2
3	0936.79.05.00	rope	2		0907.10.06.00	hex. nut M6	2
4	0936.79.04.00	rope	1		0910.10.06.00	washer 6,4x12,5x1,6	2
5	0936.99.73.00	shackles	1		0911.10.06.00	spring washer A6	2
6	1712.37.08.28	closing plate	1	15	1715.37.06.59	holder	1
7	0901.20.45.00	hex. bolt M6x16	1	16	0901.20.45.00	hex. bolt M6x16	1
	0907.60.06.00	safety nut NM6	1		0907.60.06.00	safety nut NM6	1
	0911.10.06.00	spring washer A6	1		0910.10.06.00	washer 6,4x12,5x1,6	1
8	1712.37.05.12	angle	1				
9	0936.99.70.00	rope roller	3				
11	0903.10.42.00	cup head bolt M8x25	2				
	0907.10.08.00	hex. nut M8	2				
	0910.15.11.00	washer 11x21x2	2				
	0911.10.08.00	spring washer A8	2				

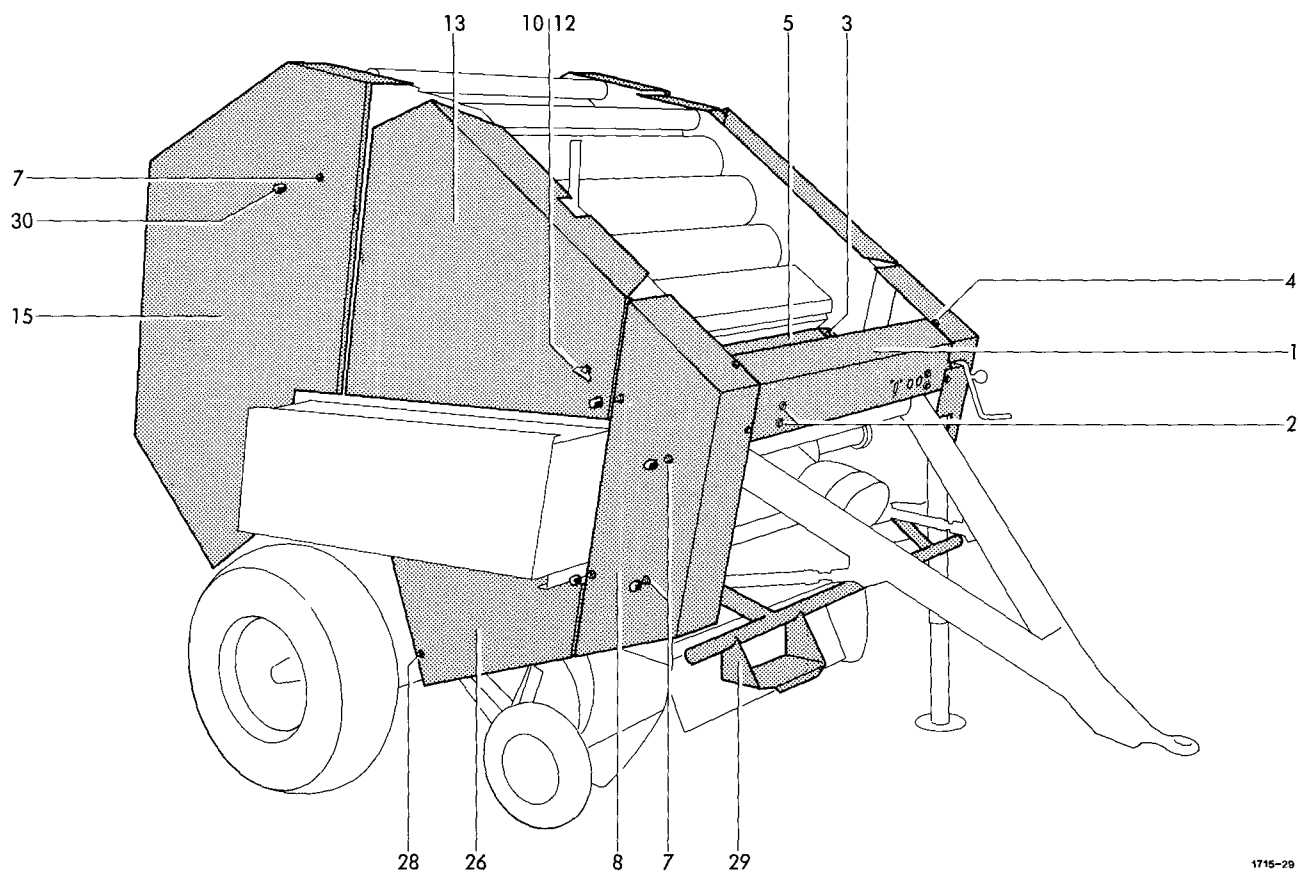


1715-48

HYDRAULIC SYSTEM

1	0951.11.41.00	hydr. cylinder 40x675x500	2	29	0955.31.16.00	choke-free banjo coupling	1
1a*	0951.51.06.00	set of seals for No 1	2	30	0955.60.33.00	straight connection	2
2	0910.15.30.00	washer 30x50x4	3	31	0954.31.22.00	coupling plug 10	1
3	0915.51.59.00	expanding pin 6x45	3	32	0955.60.43.00	straight connection	
4-6	1712.46.02.01	support cpl.	2			with shaft 12	1
4	1712.46.02.02	support	2	33*	0954.31.80.00	orifice washer for No 29	2
5	0940.64.74.00	plate spring 20x1,5	2	34	0952.13.03.00	ball valve	1
6	0914.15.47.00	rivet 5x10	4	35	0954.31.01.00	coupling sleeve	2
7	1712.46.02.10	support bearing	2	36	0954.32.10.00	dust plug	2
10+11	1712.46.03.01	tipping bearing cpl.	1	37	5633.13.09.06	plate	2
10	1712.46.03.02	whip	1	38	1715.46.04.31	tubing	1
11	0920.15.34.00	bush 35x39x30	2	39	1715.46.04.32	tubing	1
12	0917.52.65.00	pin 28x73	1	40	1715.46.04.33	tubing	1
13	0916.11.36.00	split pin 6,3x40	1	41	1715.46.04.34	tubing	2
14	0915.51.87.00	expanding pin 8x50	1	42	0954.60.40.00	clamp	2
15	0910.81.86.00	washer	1	43	0901.20.47.00	hex. bolt M6x20	1
16	0954.12.66.00	high pressure hose	2		0910.15.06.00	washer 6,6x12,5x1,6	1
17	0954.31.20.00	coupling plug 10x12	1	44	0907.80.06.00	safety nut M6	1
18	0955.91.10.00	nut 12	6	45	0951.11.44.00	hydr. cylinder	1
19*	0955.96.08.00	cutting ring 12 for No 18	4	46*	0951.51.44.00	set of seals for No 45	1
20	0955.30.41.00	banjo coupling	1	47	0910.10.17.00	washer 17x30x3	1
21*	0925.40.19.00	seal A18x24 for No 20	1	48	0916.10.99.00	split pin 4x32	1
22	0955.42.04.00	straight connection	1	49	0954.12.17.00	high pressure hose	2
24	0955.16.67.00	t-connection 12	3	50	0955.34.04.00	adjustable angle connection	4
25	0952.26.01.00	non return valve	1	51	0954.62.43.00	norma-clamp	2
26	0952.13.60.00	ball valve 12	1	52	0901.20.47.00	hex. bolt M6x20	1
27*	0901.20.66.00	hex. bolt M8x20 for No 26	2		0911.10.06.00	spring washer A6	1
	0911.10.08.00	spring washer A8	2	53*	1712.46.90.00	+hydr. distributor f. tractor	1
28	0954.12.06.00	high pressure hose	1				

+ = extra equipment



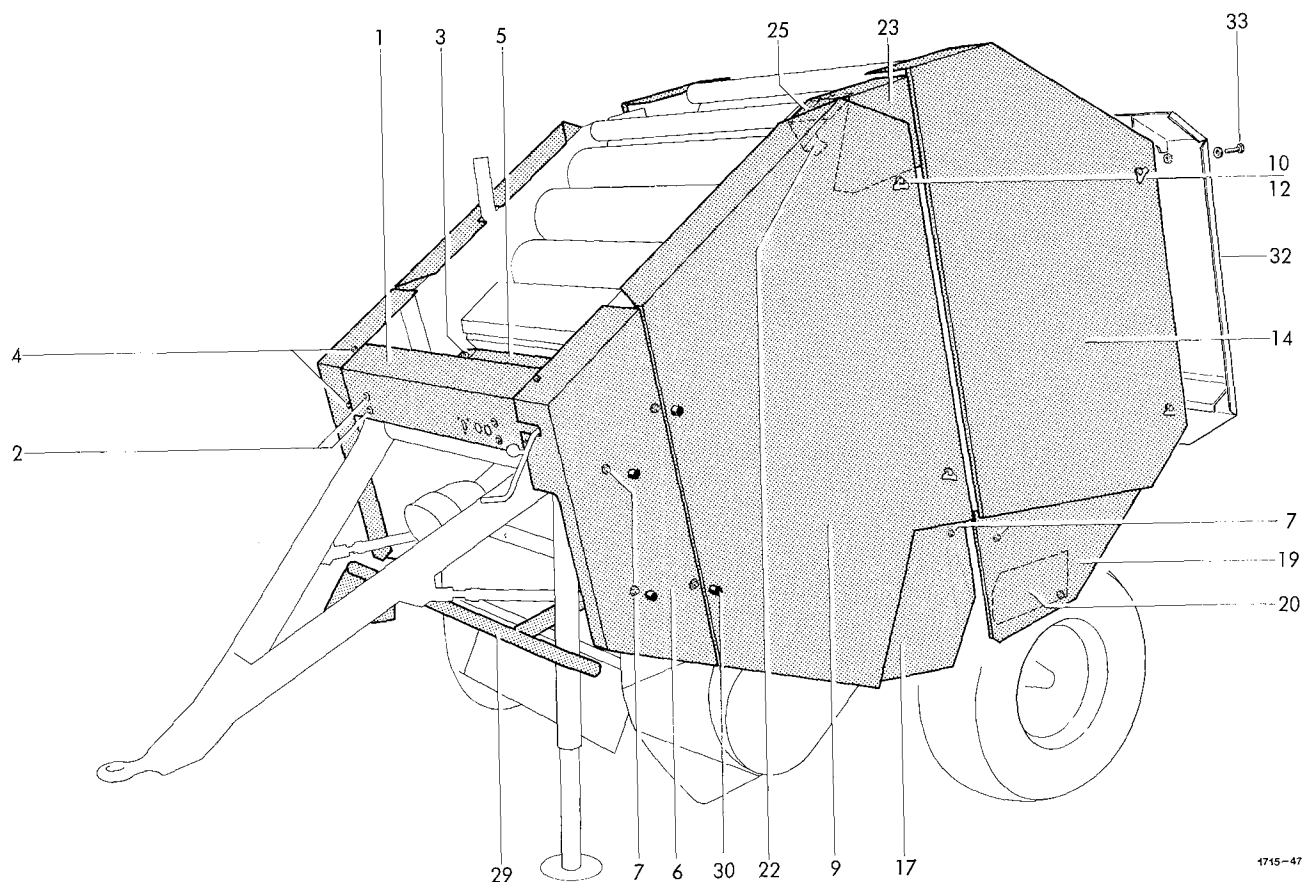
1715-29

GUARDS

1	1715.51.01.01	shield	1	8	1715.51.03.01	front guard	1
2	0901.20.64.00	hex. bolt	4		1715.51.03.06	+front guard	1
	0907.10.08.00	hex. nut	4	9	1715.51.04.01	guard	1
	0910.40.08.00	washer	4	10	0919.48.96.00	cover lock hinged	5
	0911.10.08.00	spring washer	4	11*	0936.73.50.00	pvc-steelrope for No 9+14	2
3	0901.20.66.00	hex. bolt	4	11a*	0901.20.68.00	hex. bolt M8x25 f. No 14+11	1
	0907.10.08.00	hex. nut	4		0907.10.08.00	hex. nut M8	1
	0910.40.08.00	washer	4		0910.40.09.00	washer 9x28x3	2
	0911.10.08.00	spring washer	4	12	0919.48.89.00	holding washer	5
4	0901.20.64.00	hex. bolt	4	13	1715.51.05.01	guard	1
	0907.10.08.00	hex. nut	4	14	1715.51.06.01	front guard	1
	0910.40.08.00	washer	8	15	1715.51.07.01	front guard	1
5	1715.51.01.10	guard	1	16*	0905.19.11.00	swageform bolt M6x15	
6	1715.51.02.01	front guard	1			for No 15+19	7
	1715.51.02.06	+front guard	1		0910.40.06.00	washer 6,6x22x2	7
7	0907.10.12.00	hex. nut	15				
	0910.10.13.00	washer	15				

+ = only for net tying device

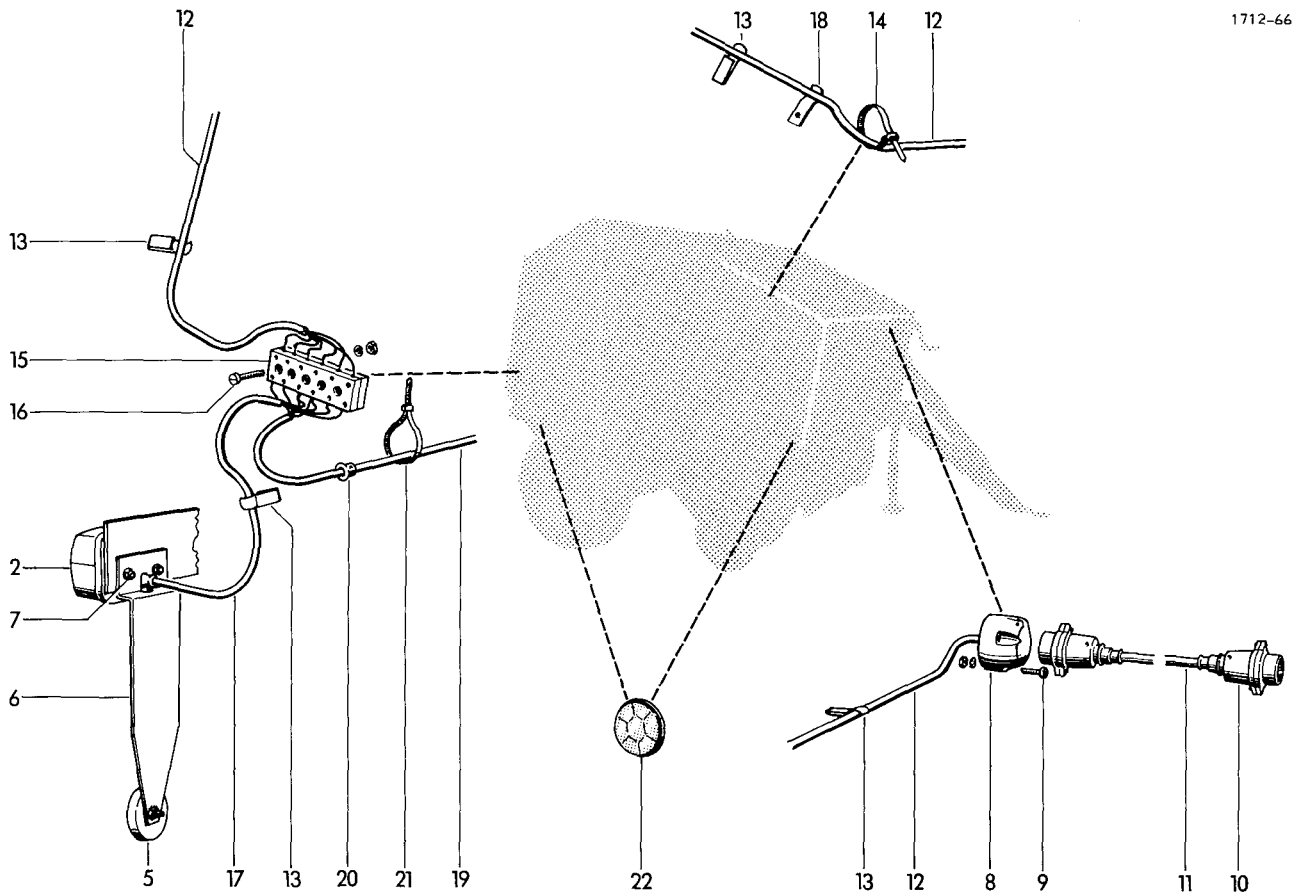
continuation page K 11



1715-47

17	1712.51.08.01	guard	1	28	0907.10.08.00	hex. nut M8	1
19	1715.51.09.01	guard	1		0910.10.08.00	washer 8,4x17x1,6	1
20	1715.51.09.08	chain cover	1		0911.10.08.00	spring washer A8	1
21*	0901.20.42.00	hex. bolt M6x10 for No 20	2	29	1712.51.12.01	front guard	1
	0911.10.06.00	spring washer A6	2	30	0938.90.64.00	hex.cover	10
22	1715.51.10.07	holder	1	31*	0901.20.68.00	hex. bolt M8x25 for No 11	2
23	1715.51.10.14	guard	1		0907.10.08.00	hex. nut M8	2
24*	0901.20.64.00	hex. bolt M8x16	2		0910.40.09.00	washer 9x28x3	4
	0911.10.08.00	spring washer A8	2	32	1715.51.13.01	guard	1
25	1715.51.10.25	guard	1	33	0901.20.71.00	hex. bolt M8x35	2
26	1715.51.11.01	guard	1		0910.10.08.00	washer 8,4x17x1,6	2
27*	0901.20.66.00	hex. bolt M8x20 for No 26	3				
	0907.10.08.00	hex. nut M8	3				
	0910.10.08.00	washer 8,4x17x1,6	6				
	0911.10.08.00	spring washer A8	3				

see also page K10



LIGHTING SYSTEM

1*	0974.10.01.00	light BBSK 215 left	1	10	0972.46.02.00	plug B 7	2
2	0974.10.02.00	light BBS 215 right	1	11	0972.16.36.00	cable 6x1,0x3000	1
3*	0974.20.38.00	bulb RL 12V 21W for No 1+2	4	12	0972.16.68.00	cable 6x1,0x5500	1
4*	0974.20.07.00	bulb G 12V 10W for No 1+2	2	13	0972.62.11.00	chassis clamp 12x28	19
5	0974.42.01.00	reflector typ R 13 C	2	14	0972.64.02.00	cable clip	1
6	1121.63.01.07	angle	2	15	0972.51.36.00	connector	1
7	0902.24.45.00	cheese head bolt M5x16	4	16	0902.24.31.00	cheese head bolt M4x25	2
	0907.10.05.00	hex. nut M5	4		0907.10.04.00	hex. nut M4	2
	0911.10.05.00	spring washer A5	4		0911.10.04.00	spring washer A4	2
8	0972.46.01.00	socket A 7	1	17	0972.14.10.00	cable 4x1,0x600	1
9	0902.24.52.00	cheese head bolt M5x35	3	18	0938.50.08.00	cable clip R4	1
	0907.10.05.00	hex. nut M5	3	19	0972.14.44.00	cable 4x1,0x2150	1
	0911.10.05.00	spring washer A5	3	20	0972.60.01.00	guide	2
10+11	0972.16.86.00	connector cable cpl. 6x1,0x3000	21		0972.64.03.00	cable clip 4,8x378	5
			1	22	0974.46.01.00	reflector RD 60 yellow	4

Part No	Page	No	Part No	Page	No	Part No	Page	No	Part No	Page	No
0907.10.08.00	H 40	19	0907.60.06.00	H 20	33	0910.10.13.00	H 20	23	0910.60.10.00	G 30	9
0907.10.08.00	H 40	24	0907.60.06.00	H 51	19	0910.10.13.00	H 50	42	0910.60.10.00	G 40	9
0907.10.08.00	H 51	23	0907.60.06.00	H 51	32	0910.10.13.00	H 51	18	0910.60.10.00	G 50	9
0907.10.08.00	H 53	2	0907.60.06.00	H 53	6	0910.10.13.00	K 10	7	0910.60.10.00	G 60	9
0907.10.08.00	H 53	3	0907.60.06.00	H 53	7	0910.10.17.00	C 40	3	0910.60.10.00	G 70	9
0907.10.08.00	H 53	8	0907.60.06.00	H 54	7	0910.10.17.00	J 10	47	0910.60.10.00	H 30	12
0907.10.08.00	H 53	15	0907.60.06.00	H 54	16	0910.10.21.00	B 40	31	0910.60.13.00	C 30	10
0907.10.08.00	H 54	11	0907.60.08.00	B 40	3a	0910.10.21.00	C 40	5	0910.60.13.00	D 20	25
0907.10.08.00	K 10	2	0907.60.08.00	E 20	7	0910.15.06.00	H 10	12	0910.64.06.00	H 51	10
0907.10.08.00	K 10	3	0907.60.10.00	C 10	16	0910.15.06.00	H 10	14*	0910.64.06.00	H 51	31
0907.10.08.00	K 10	4	0907.60.10.00	C 30	35	0910.15.06.00	J 10	43	0910.69.90.00	D 20	11
0907.10.08.00	K 10	11a*	0907.60.10.00	E 10	16	0910.15.09.00	B 40	35	0910.70.43.00	H 51	24
0907.10.08.00	K 11	27*	0907.60.10.00	E 10	42	0910.15.09.00	D 30	20	0910.71.29.00	H 51	28
0907.10.08.00	K 11	28	0907.60.10.00	E 10	42	0910.15.11.00	B 10	10	0910.71.34.00	H 51	5
0907.10.08.00	K 11	31*	0907.60.10.00	E 10	42	0910.15.11.00	B 40	38	0910.72.01.00	E 10	35
0907.10.10.00	B 10	10	0907.60.12.00	B 40	13	0910.15.11.00	C 20	17	0910.72.03.00	E 10	35
0907.10.10.00	B 10	11	0907.60.12.00	B 50	9	0910.15.11.00	E 10	41	0910.72.05.00	E 10	21
0907.10.10.00	B 10	13	0907.60.12.00	C 30	10	0910.15.11.00	E 10	41	0910.72.05.00	E 10	35
0907.10.10.00	B 10	14	0907.60.12.00	G 10	14	0910.15.11.00	H 53	15	0910.72.50.00	C 10	9
0907.10.10.00	B 10	17	0907.60.12.00	G 20	14	0910.15.11.00	H 54	11	0910.72.50.00	G 10	17
0907.10.10.00	B 10	21	0907.60.12.00	G 30	13	0910.15.14.00	B 40	26	0910.72.50.00	G 20	17
0907.10.10.00	B 10	24	0907.60.14.00	B 50	5	0910.15.14.00	H 20	26	0910.72.50.00	G 30	16
0907.10.10.00	B 10	25	0907.60.16.00	B 20	3	0910.15.16.00	H 52	15	0910.72.50.00	G 40	13
0907.10.10.00	B 40	45	0907.60.20.00	B 20	8	0910.15.22.00	B 50	15	0910.72.50.00	G 50	13
0907.10.10.00	B 50	13	0907.60.80.00	B 40	34a	0910.15.30.00	J 10	2	0910.72.50.00	G 60	13
0907.10.10.00	C 10	7	0907.80.06.00	J 10	44	0910.25.15.00	B 50	6	0910.72.50.00	G 70	13
0907.10.10.00	C 20	17	0907.80.08.00	B 40	54	0910.25.26.00	C 30	16	0910.72.52.00	C 10	9
0907.10.10.00	C 20	23	0907.81.08.00	C 20	10	0910.30.15.00	H 52	17	0910.72.52.00	G 10	17
0907.10.10.00	D 30	2	0907.81.08.00	H 50	9	0910.40.06.00	D 30	22	0910.72.52.00	G 20	17
0907.10.10.00	H 10	23	0908.20.18.00	A 10	7	0910.40.06.00	D 30	24	0910.72.52.00	G 30	16
0907.10.10.00	H 20	6	0908.31.06.00	D 30	22	0910.40.06.00	H 10	21	0910.72.52.00	G 40	13
0907.10.10.00	H 30	11	0908.31.06.00	H 10	13	0910.40.06.00	H 40	5	0910.72.52.00	G 50	13
0907.10.10.00	H 40	21	0908.31.08.00	H 51	38	0910.40.06.00	H 40	6	0910.72.52.00	G 60	13
0907.10.10.00	H 40	25	0908.81.04.00	H 50	38	0910.40.06.00	H 53	6	0910.72.52.00	G 70	13
0907.10.10.00	H 51	34	0908.82.04.00	B 40	23	0910.40.06.00	H 53	7	0910.72.53.00	G 10	17
0907.10.10.00	H 52	31	0908.88.03.00	A 10	4	0910.40.06.00	K 10	16*	0910.72.53.00	G 20	17
0907.10.10.00	H 53	11	0910.10.06.00	C 30	4	0910.40.08.00	K 10	2	0910.72.53.00	G 30	16
0907.10.10.00	B 10	27*	0910.10.06.00	H 10	3*	0910.40.08.00	K 10	3	0910.72.54.00	C 10	9
0907.10.12.00	B 30	27	0910.10.06.00	H 20	12	0910.40.08.00	K 10	4	0910.72.54.00	G 40	13
0907.10.12.00	B 40	17	0910.10.06.00	H 20	33	0910.40.09.00	D 20	28	0910.72.54.00	G 50	13
0907.10.12.00	B 40	24	0910.10.06.00	H 53	18	0910.40.09.00	H 30	19	0910.72.54.00	G 60	13
0907.10.12.00	D 30	10	0910.10.06.00	H 54	14	0910.40.09.00	H 40	19	0910.72.54.00	G 70	13
0907.10.12.00	E 10	25	0910.10.06.00	H 54	16	0910.40.09.00	H 53	2	0910.73.10.00	D 20	24
0907.10.12.00	E 10	39	0910.10.08.00	B 40	53	0910.40.09.00	H 53	3	0910.73.10.00	E 10	12
0907.10.12.00	H 50	39	0910.10.08.00	H 10	16	0910.40.09.00	H 53	8	0910.73.10.00	G 40	12
0907.10.12.00	H 51	18	0910.10.08.00	H 20	30	0910.40.09.00	K 10	11a*	0910.73.10.00	G 50	12
0907.10.12.00	H 51	33	0910.10.08.00	H 30	24	0910.40.09.00	K 11	31*	0910.73.10.00	G 60	12
0907.10.12.00	K 10	7	0910.10.08.00	H 50	19	0910.40.11.00	B 10	17	0910.73.12.00	D 20	24
0907.10.13.00	B 40	25	0910.10.08.00	H 53	7	0910.40.11.00	B 40	45	0910.73.12.00	E 10	12
0907.10.13.00	H 50	40	0910.10.08.00	K 11	27*	0910.40.11.00	C 10	15	0910.73.12.00	G 40	12
0907.10.16.00	A 10	12	0910.10.08.00	K 11	28	0910.40.11.00	E 10	15	0910.73.12.00	G 50	12
0907.10.20.00	B 20	6	0910.10.08.00	K 11	33	0910.60.06.00	C 30	21	0910.73.12.00	G 60	12
0907.10.20.00	B 20	14	0910.10.10.00	H 50	8	0910.60.06.00	C 30	27	0910.73.14.00	G 40	12
0907.56.06.00	H 20	16	0910.10.13.00	B 50	10	0910.60.10.00	C 30	34	0910.73.14.00	G 50	12
0907.56.08.00	H 20	29	0910.10.13.00	C 30	18	0910.60.10.00	G 10	9	0910.73.14.00	G 60	12
0907.60.06.00	H 10	22	0910.10.13.00	E 10	27	0910.60.10.00	G 20	9	0910.73.70.00	G 10	16

Part No	Page	No	Part No	Page	No	Part No	Page	No	Part No	Page	No
0910.73.70.00	G 20	16	0911.10.06.00	J 10	52	0911.10.10.00	H 51	34	0916.10.68.00	B 40	39
0910.73.70.00	G 30	15	0911.10.06.00	K 11	21*	0911.10.10.00	H 53	11	0916.10.95.00	H 20	21
0910.73.70.00	G 70	12	0911.10.08.00	B 30	3	0911.10.10.00	B 10	27*	0916.10.97.00	C 40	4
0910.73.72.00	G 10	16	0911.10.08.00	B 40	3	0911.10.12.00	A 10	13	0916.10.97.00	E 10	28
0910.73.72.00	G 20	16	0911.10.08.00	B 50	12	0911.10.12.00	B 30	26	0916.10.99.00	B 40	27
0910.73.72.00	G 30	15	0911.10.08.00	C 10	4	0911.10.12.00	B 40	14	0916.10.99.00	B 40	32
0910.73.72.00	G 70	12	0911.10.08.00	C 20	4	0911.10.12.00	C 20	6	0916.10.99.00	J 10	48
0910.73.74.00	G 10	16	0911.10.08.00	G 10	6	0911.10.12.00	C 40	9	0916.11.12.00	B 50	16
0910.73.74.00	G 20	16	0911.10.08.00	G 20	6	0911.10.12.00	C 40	10	0916.11.12.00	C 40	6
0910.73.74.00	G 30	15	0911.10.08.00	G 30	6	0911.10.12.00	D 20	2	0916.11.15.00	B 30	25
0910.73.74.00	G 70	12	0911.10.08.00	G 40	6	0911.10.12.00	D 30	10	0916.11.28.00	C 20	18
0910.74.85.00	D 20	18	0911.10.08.00	G 50	6	0911.10.12.00	H 51	33	0916.11.30.00	B 40	11
0910.74.87.00	D 20	18	0911.10.08.00	G 60	6	0911.10.16.00	A 10	12	0916.11.36.00	C 30	17
0910.74.88.00	D 20	18	0911.10.08.00	G 70	6	0911.10.16.00	H 52	8	0916.11.36.00	J 10	13
0910.75.15.00	D 20	8	0911.10.08.00	H 10	16	0911.10.21.00	B 20	14	0916.11.99.00	A 10	6
0910.75.17.00	D 20	8	0911.10.08.00	H 20	5	0912.10.12.00	H 20	24	0916.21.03.00	B 40	41
0910.75.18.00	D 20	8	0911.10.08.00	H 20	17	0912.10.12.00	H 30	10	0916.21.04.00	H 52	18
0910.76.30.00	C 20	24	0911.10.08.00	H 20	35	0912.10.15.00	H 52	14	0917.31.46.00	C 40	2
0910.76.65.00	D 20	17	0911.10.08.00	H 30	19	0912.10.16.00	H 51	27	0917.50.83.00	E 10	26
0910.76.75.00	D 20	7	0911.10.08.00	H 30	23	0912.10.20.00	H 10	6	0917.52.65.00	J 10	12
0910.80.18.00	H 20	35	0911.10.08.00	H 40	17	0912.10.20.00	H 10	26*	0918.19.12.00	C 30	11
0910.80.18.00	H 40	24	0911.10.08.00	H 40	19	0912.10.20.00	H 51	43	0918.19.13.00	C 30	23
0910.80.18.00	H 51	37	0911.10.08.00	H 40	24	0912.10.25.00	E 10	34	0918.20.04.00	H 40	27
0910.80.24.00	H 51	9	0911.10.08.00	H 51	23	0912.10.26.00	E 10	20	0919.48.89.00	H 10	8
0910.80.30.00	D 30	6	0911.10.08.00	H 53	2	0912.10.30.00	C 10	8	0919.48.89.00	K 10	12
0910.80.39.00	D 30	11	0911.10.08.00	H 53	3	0912.10.30.00	C 20	25	0919.48.96.00	K 10	10
0910.80.46.00	D 30	13	0911.10.08.00	H 53	8	0912.10.30.00	G 10	18	0919.48.97.00	H 10	7
0910.80.92.00	H 10	5	0911.10.08.00	H 53	15	0912.10.30.00	G 20	18	0919.71.10.00	C 40	7
0910.80.92.00	H 51	42	0911.10.08.00	H 54	11	0912.10.30.00	G 40	14	0919.88.01.00	H 52	21
0910.81.86.00	J 10	15	0911.10.08.00	J 10	27*	0912.10.30.00	G 50	14	0920.11.25.00	H 51	21
0910.81.97.00	B 40	10	0911.10.08.00	K 10	2	0912.10.30.00	G 60	14	0920.12.33.00	H 51	15
0910.84.45.00	B 40	8	0911.10.08.00	K 10	3	0912.10.35.00	B 40	9	0920.13.05.10	E 10	18
0910.89.14.00	H 50	21	0911.10.08.00	K 11	24*	0912.10.40.00	D 20	14	0920.14.20.00	C 10	2
0910.89.81.00	G 30	17	0911.10.08.00	K 11	27*	0912.10.40.00	E 10	13	0920.15.34.00	B 40	7
0910.89.81.00	G 70	14	0911.10.08.00	K 11	28	0912.15.32.00	H 30	9	0920.15.34.00	J 10	11
0911.10.04.00	B 40	49	0911.10.10.00	B 10	10	0912.15.52.00	E 10	33	0920.19.90.00	B 10	5
0911.10.04.00	K 20	16	0911.10.10.00	B 10	11	0912.15.80.00	D 15	8	0920.39.90.00	H 20	2
0911.10.05.00	K 20	7	0911.10.10.00	B 10	13	0912.50.10.00	C 20	14	0920.39.92.00	H 50	37
0911.10.05.00	K 20	9	0911.10.10.00	B 10	14	0912.50.10.00	H 50	41	0920.39.92.00	H 52	29
0911.10.06.00	B 10	7	0911.10.10.00	B 10	17	0912.50.12.00	H 50	15	0920.70.25.00	H 51	11
0911.10.06.00	B 10	7a*	0911.10.10.00	B 10	21	0912.60.06.00	D 15	3	0922.10.28.00	D 20	16
0911.10.06.00	C 30	27	0911.10.10.00	B 10	24	0913.10.50.00	C 10	5	0922.10.48.00	D 20	6
0911.10.06.00	C 30	28	0911.10.10.00	B 10	25	0913.12.75.00	D 20	5	0922.11.53.00	H 50	14
0911.10.06.00	E 20	27	0911.10.10.00	B 10	29	0914.15.47.00	J 10	6	0922.12.51.00	H 30	8
0911.10.06.00	H 10	3*	0911.10.10.00	B 40	45	0915.40.32.00	H 30	27	0922.12.54.00	H 51	7
0911.10.06.00	H 10	14*	0911.10.10.00	B 50	13	0915.50.91.00	B 40	29	0922.12.56.00	E 10	32
0911.10.06.00	H 20	8	0911.10.10.00	C 20	17	0915.50.95.00	B 30	17	0922.12.59.00	E 10	9
0911.10.06.00	H 30	29	0911.10.10.00	C 20	23	0915.51.55.00	B 30	8	0922.12.81.00	H 50	20
0911.10.06.00	H 40	7	0911.10.10.00	H 10	23	0915.51.58.00	H 30	4	0922.12.87.00	G 10	8
0911.10.06.00	H 40	16	0911.10.10.00	H 20	6	0915.51.59.00	J 10	3	0922.12.87.00	G 20	8
0911.10.06.00	H 51	10	0911.10.10.00	H 30	11	0915.51.66.00	B 40	20	0922.12.87.00	G 30	8
0911.10.06.00	H 52	9	0911.10.10.00	H 40	21	0915.51.85.00	H 51	39	0922.12.87.00	G 40	8
0911.10.06.00	H 52	23	0911.10.10.00	H 40	25	0915.51.87.00	J 10	14	0922.12.87.00	G 50	8
0911.10.06.00	H 53	18	0911.10.10.00	H 50	32	0915.51.89.00	B 30	7	0922.12.87.00	G 60	8
0911.10.06.00	H 54	7	0911.10.10.00	H 50	33	0915.52.22.00	D 10	13	0922.12.87.00	G 70	8
0911.10.06.00	H 54	14	0911.10.10.00	H 50	34	0915.52.22.00	D 15	21	0922.12.88.00	G 40	4

Part No	Page	No	Part No	Page	No	Part No	Page	No	Part No	Page	No
0922.12.88.00	G	50	4	0930.20.16.00	D	15	15	0934.60.27.00	H	30	14*
0922.12.88.00	G	60	4	0930.22.18.00	D	10	5	0934.60.87.00	H	30	16*
0922.12.91.00	C	20	22	0930.22.21.00	D	10	1	0934.60.88.00	C	10	12*
0922.12.95.00	G	10	3	0930.22.21.00	D	15	1	0934.60.90.00	E	10	3*
0922.12.95.00	G	20	3	0930.22.60.00	D	10	10	0934.61.07.00	H	30	15*
0922.12.95.00	G	30	3	0930.22.61.00	D	15	18	0934.64.88.00	C	10	11*
0922.12.95.00	G	70	3	0930.26.70.00	D	10	16	0934.65.07.00	E	10	2*
0922.18.03.00	C	20	13	0930.26.70.00	D	15	24	0934.96.01.00	E	10	19
0922.18.17.00	C	20	20	0930.26.73.00	D	10	12	0934.99.01.00	C	10	13
0922.19.18.00	H	50	23	0930.26.73.00	D	15	20	0934.99.01.00	E	10	14
0922.61.43.00	D	20	15	0930.28.01.00	D	10	4	0935.11.02.00	C	30	26
0922.96.74.00	D	15	6	0930.28.09.00	D	15	17	0935.11.05.00	B	40	36
0924.10.36.00	D	30	8	0930.29.02.00	D	15	9	0935.13.01.00	B	40	50
0924.20.30.00	C	20	20+21	0930.30.01.00	D	15	13	0935.13.03.00	C	30	33
0924.20.31.00	C	20	21	0930.31.04.00	D	10	7	0935.13.19.00	B	20	13
0924.50.06.00	H	51	22	0930.31.08.00	D	10	8	0936.45.11.00	B	40	42
0924.51.18.00	H	30	22	0930.32.01.00	D	15	4	0936.49.50.00	B	40	55
0924.52.11.00	H	52	13	0930.33.61.00	D	15	10	0936.49.80.00	H	51	25-26
0924.53.60.00	H	20	7	0930.34.18.00	C	10	1	0936.73.50.00	K	10	11*
0924.53.60.00	H	20	19	0930.34.61.00	D	15	3-14	0936.78.02.00	H	51	25
0924.54.01.00	H	52	3	0930.38.12.00	D	15	14	0936.79.04.00	H	54	4
0924.54.02.00	H	51	6	0930.38.80.00	D	15	12	0936.79.05.00	H	54	3
0925.14.40.00	D	20	19	0930.40.24.00	D	15	11	0936.90.03.00	B	40	56
0925.14.55.00	D	20	10	0930.40.25.00	D	15	7	0936.99.70.00	H	54	9
0925.24.44.00	H	52	7	0930.40.26.00	D	10	3	0936.99.73.00	H	51	40
0925.38.24.00	H	51	4	0930.41.03.00	D	10	2	0936.99.73.00	H	54	5
0925.38.35.00	H	52	4	0930.41.04.00	D	15	2	0936.99.80.00	H	30	18
0925.40.06.00	D	20	22	0930.41.39.00	D	15	28	0937.17.19.00	C	30	31
0925.40.19.00	J	10	21*	0930.41.60.00	D	15	5	0937.19.03.00	C	30	12
0926.10.05.00	D	15	19	0930.42.40.00	D	10	15	0937.19.03.00	C	30	29
0926.10.08.00	D	10	11	0930.42.41.00	D	15	23	0937.51.83.00	B	20	10
0926.10.10.00	D	10	9	0930.42.43.00	D	10	14	0938.20.40.00	H	40	26
0926.10.10.00	D	15	16	0930.42.44.00	D	15	22	0938.50.08.00	H	40	13
0926.60.02.00	E	20	1	0930.44.18.00	D	10	22	0938.50.08.00	K	20	18
0926.60.03.00	E	20	8-13	0930.44.77.00	D	10	21	0938.90.64.00	K	11	30
0926.60.04.00	E	20	8	0930.45.07.00	D	10	18	0938.90.70.00	G	10	19
0926.60.05.00	E	20	9	0930.45.07.00	D	15	26	0938.90.70.00	G	20	19
0926.60.06.00	E	20	10	0930.45.20.00	D	10	23	0938.90.70.00	G	30	19
0926.60.07.00	E	20	11	0930.45.31.00	D	10	19	0938.90.70.00	G	40	15
0926.60.08.00	E	20	12	0930.45.38.00	D	15	30	0938.90.70.00	G	50	15
0926.60.09.00	E	20	13	0930.49.02.00	D	10	24	0938.90.70.00	G	60	15*
0926.60.12.00	E	20	14	0930.49.02.00	D	15	31	0938.90.70.00	G	70	16*
0926.60.14.00	E	20	19	0930.49.63.00	D	15	27	0938.96.32.00	C	30	24
0926.60.16.00	E	20	16	0930.50.40.00	D	10	20	0938.98.40.00	B	50	11
0926.60.17.00	E	20	23	0930.50.40.00	D	15	29	0938.98.59.00	H	53	9
0926.60.18.00	E	20	20	0930.53.25.00	D	15	33	0939.17.01.00	H	51	26
0926.60.19.00	E	20	18	0930.53.66.00	D	15	32	0940.10.71.00	H	10	11
0926.76.11.00	H	30	2*	0933.11.08.00	H	52	19	0940.10.71.00	H	10	20
0926.76.18.00	D	20	23	0934.15.80.00	H	30	13	0940.12.70.00	B	40	52
0926.94.10.00	F	10	7*	0934.15.81.00	H	30	17*	0940.12.70.00	H	50	18
0928.30.01.00	H	30	1	0934.16.33.00	C	10	10	0940.12.70.00	H	52	28
0930.13.06.00	D	15	1-31	0934.18.14.00	E	10	4	0940.13.61.00	H	52	27
0930.13.08.00	D	10	1-24	0934.18.16.00	E	10	1	0940.16.11.00	E	10	24
0930.20.14.00	D	10	17	0934.18.37.00	E	10	5	0940.20.48.00	H	20	22
0930.20.14.00	D	15	25	0934.18.40.00	E	10	6	0940.20.48.00	H	51	17
0930.20.16.00	D	10	6	0934.18.91.00	E	10	7	0940.22.30.00	C	30	30
								0940.22.31.00	H	54	2
								0940.23.47.00	B	40	43
								0940.25.21.00	B	40	15
								0940.25.21.00	C	30	32
								0940.25.21.00	H	51	16
								0940.25.45.00	B	40	5
								0940.25.45.00	B	50	7
								0940.51.18.00	H	50	26
								0940.52.25.00	C	20	16
								0940.64.74.00	J	10	5
								0940.64.92.00	H	20	34
								0940.65.37.00	H	20	14
								0940.88.06.00	H	20	11
								0940.96.01.00	B	40	16
								0940.96.01.00	C	40	8
								0942.10.05.00	A	10	1-11
								0942.20.20.00	A	10	9
								0942.20.21.00	A	10	8
								0942.21.40.00	A	10	2
								0942.22.28.00	A	10	11
								0942.22.65.00	A	10	10
								0942.22.89.00	A	10	3
								0942.24.95.00	A	10	5
								0942.30.68.00	A	10	1
								0942.40.02.00	A	10	1-10a
								0942.40.03.00	A	10	1-10a
								0942.40.12.00	A	10	1
								0942.40.13.00	A	10	1
								0942.40.22.00	A	10	2
								0942.40.32.00	A	10	5
								0942.40.42.00	A	10	8
								0942.40.44.00	A	10	9
								0942.40.52.00	A	10	10a
								0942.40.60.00	A	10	3
								0942.40.66.00	A	10	4
								0942.40.72.00	A	10	7
								0942.40.77.00	A	10	6
								0944.10.60.00	A	10	14-16
								0944.11.23.00	A	10	22-24
								0944.20.23.00	A	10	19
								0944.20.60.00	A	10	14
								0944.20.71.00	A	10	17
								0944.21.23.00	A	10	22
								0944.30.17.00	A	10	20*
								0944.30.60.00	A	10	15*
								0944.30.68.00	A	10	18*
								0944.30.86.00	A	10	23*
								0944.51.30.00	A	10	21
								0944.51.64.00	A	10	16
								0944.52.20.00	A	10	24
								0944.80.22.00	A	10	16-18
								0944.80.23.00	A	10	19-21
								0944.90.11.00	B	30	1-25
								0944.90.46.00	B	30	22
								0944.90.61.00	C	30	15
								0944.91.51.00	B	30	1

Part No	Page	No	Part No	Page	No	Part No	Page	No	Part No	Page	No
1712.34.09.18	H	20	36	1712.37.03.02	H	52	2	1712.42.13.01	C	30	1
1712.34.09.19	H	20	37	1712.37.03.05	H	52	5	1712.42.13.07	C	30	2
1712.37.01.01	H	50	1	1712.37.03.06	H	52	6	1712.42.91.00	C	30	22-31
1712.37.01.10	H	50	2	1712.37.03.18	H	52	12	1712.42.91.08	C	30	25
1712.37.01.11	H	50	3	1712.37.03.29	H	52	16	1712.42.91.22	C	30	22
1712.37.01.16	H	50	10	1712.37.03.37	H	52	20-22	1712.43.01.12	C	40	1
1712.37.01.18	H	50	11	1712.37.03.38	H	52	20	1712.46.02.01	J	10	4-6
1712.37.01.24	H	50	12-15	1712.37.04.02	H	50	35	1712.46.02.02	J	10	4
1712.37.01.25	H	50	12	1712.37.04.18	H	52	25-31	1712.46.02.10	J	10	7
1712.37.01.28	H	50	13	1712.37.04.19	H	52	25	1712.46.03.01	J	10	10+11
1712.37.01.32	H	50	16	1712.37.04.24	H	52	26	1712.46.03.02	J	10	10
1712.37.01.35	H	50	17	1712.37.05.01	H	53	1	1712.46.90.00	J	10	53*
1712.37.01.45	H	50	22	1712.37.05.12	H	54	8	1712.51.05.13	B	10	18
1712.37.01.47	H	50	24	1712.37.06.06	H	53	5	1712.51.08.01	K	11	17
1712.37.01.49	H	50	25	1712.37.06.35	H	53	12	1712.51.12.01	K	11	29
1712.37.01.54	H	50	27	1712.37.06.39	H	53	13	1712.92.01.01	B	50	1
1712.37.01.55	H	50	28	1712.37.06.41	H	53	14	1712.92.01.08	B	50	2
1712.37.01.58	H	50	30	1712.37.06.52	H	54	13	1712.92.01.16	B	50	3
1712.37.01.62	H	50	31	1712.37.07.05	H	53	17	1712.92.01.17	B	50	4
1712.37.01.80	H	50	5	1712.37.08.01	H	54	1	1715.03.00.00	B	10	1
1712.37.01.83	H	50	6	1712.37.08.28	H	54	6	1715.04.00.00	B	10	2
1712.37.01.84	H	50	4	1712.42.01.01	C	20	1	1715.08.02.01	B	40	6
1712.37.02.01	H	51	1-11	1712.42.01.25	C	20	2	1715.08.04.01	B	40	21-27
1712.37.02.02	H	51	1	1712.42.01.28	C	20	3	1715.08.04.02	B	40	21
1712.37.02.08	H	51	2	1712.42.01.35	C	20	5	1715.08.04.17	B	40	28
1712.37.02.12	H	51	3	1712.42.02.01	C	20	7	1715.08.05.01	B	40	30
1712.37.02.25	H	51	12	1712.42.02.12	C	20	11-14	1715.08.05.18	B	40	37
1712.37.02.31	H	51	13	1712.42.02.13	C	20	11	1715.08.05.35	B	40	44
1712.37.02.36	H	51	14+15	1712.42.05.05	C	30	5	1715.12.03.24	D	30	15
1712.37.02.37	H	51	14	1712.42.07.09	C	40	11	1715.25.07.14	E	10	22
1712.37.02.51	H	51	20-24	1712.42.08.01	C	30	14	1715.25.08.11	E	10	30
1712.37.02.52	H	51	20	1712.42.09.01	C	30	19	1715.25.08.23	E	10	36
1712.37.02.68	H	51	29	1712.42.09.02	C	30	20	1715.25.10.01	E	10	37
1712.37.02.72	H	51	30	1712.42.12.10	C	30	9	1715.25.10.04	E	10	38
1712.37.02.85	H	51	35	1712.42.12.16	C	30	13	5633.13.09.06	J	10	37