



RP 15

SPARE PARTS LIST

Instructions for Ordering Spare Parts

Parts illustrated on the following pages are marked with position numbers. The text below the illustration will tell you part number and description. Changed parts are marked with a stroke in front of position number. To avoid errors each order must contain the following details:

Part number and description of parts (stated in the list)

Quantity of parts required

Requested delivery (post, freight, express)

Full address of purchaser (with postal code)

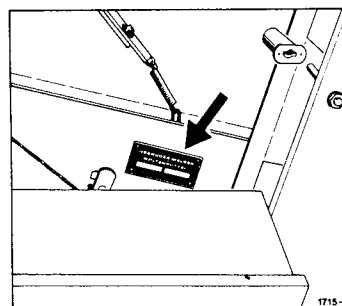
The part numbers listed here have priority over any impressed numbers on parts.

Bolts, nuts, spring washers and washers for mounting complete groups of spare parts are not normally provided in the delivery. If these are required, please give the part number of these fitting parts.

The part number index on the end of the list is for finding parts of which the numbers are known quickly.

Abbreviations:	hex.	=	hexagon
	cpl.	=	complete
	int.	=	interchangeable
	*	=	not illustrated

The Machine number of your baler is stamped into the model data plate shown in the adjoining illustration. As it is essential to quote this number in full in all your enquiries and spare parts orders, we recommend you to note it down in the space below:



Reproduction prohibited.

All rights reserved - Design and construction subject to alterations. Illustrations and technical data are not binding.

Copyright 1985 by Gebrüder Welger GmbH & Co. Kommanditgesellschaft, Wolfenbüttel.

F.W. 6.85. 500 000

G E B R Ü D E R W E L G E R G M B H & C O . K O M M A N D I T G E S E L L S C H A F T

Gebrüder-Welger-Straße P.O. Box 1560 D-3340 Wolfenbüttel

Tel.:(5331) 404-0 Teletex:17-5331831 Cables: Welger Wolfenbüttel



Achse

Road Axle — Essieu

Assale — Eje

A

Gestell und Zubehör

Roll Chamber and Accessories — Chambre de Pressage et Accessoires

Telaio ed Accessori — Canal de Prensado y Accesorios

B

Aufsammler

Pick-up Reel — Ramasseur

Raccoglitore — Recogedor

C

Antrieb

Main Drive — Commande

Trasmissione — Transmision

D

Antriebsketten

Drive Chains — Chaînes de Commande

Trasmissione a Catena — Cadenas de Transmision

E

Werkzeug

Tools — Outillage

Accessorio — Herramientas

F

Walzen

Rollers — Rouleaux

Rulli — Rodillos

G

Bindung

Tying Unit — Liage

Legatore — Atador

H

Hydraulikeinrichtung

Hydraulic System — Equipement Hydraulique

Impianto Idraulico — Dispositivo Hidraulico

J

Schutzvorrichtung und Beleuchtung

Guards and Lighting Equipment — Protecteurs et Eclairage Electrique

Dispositivi di Protezione ed Illuminazione — Dispositivos de Proteccion y Luces

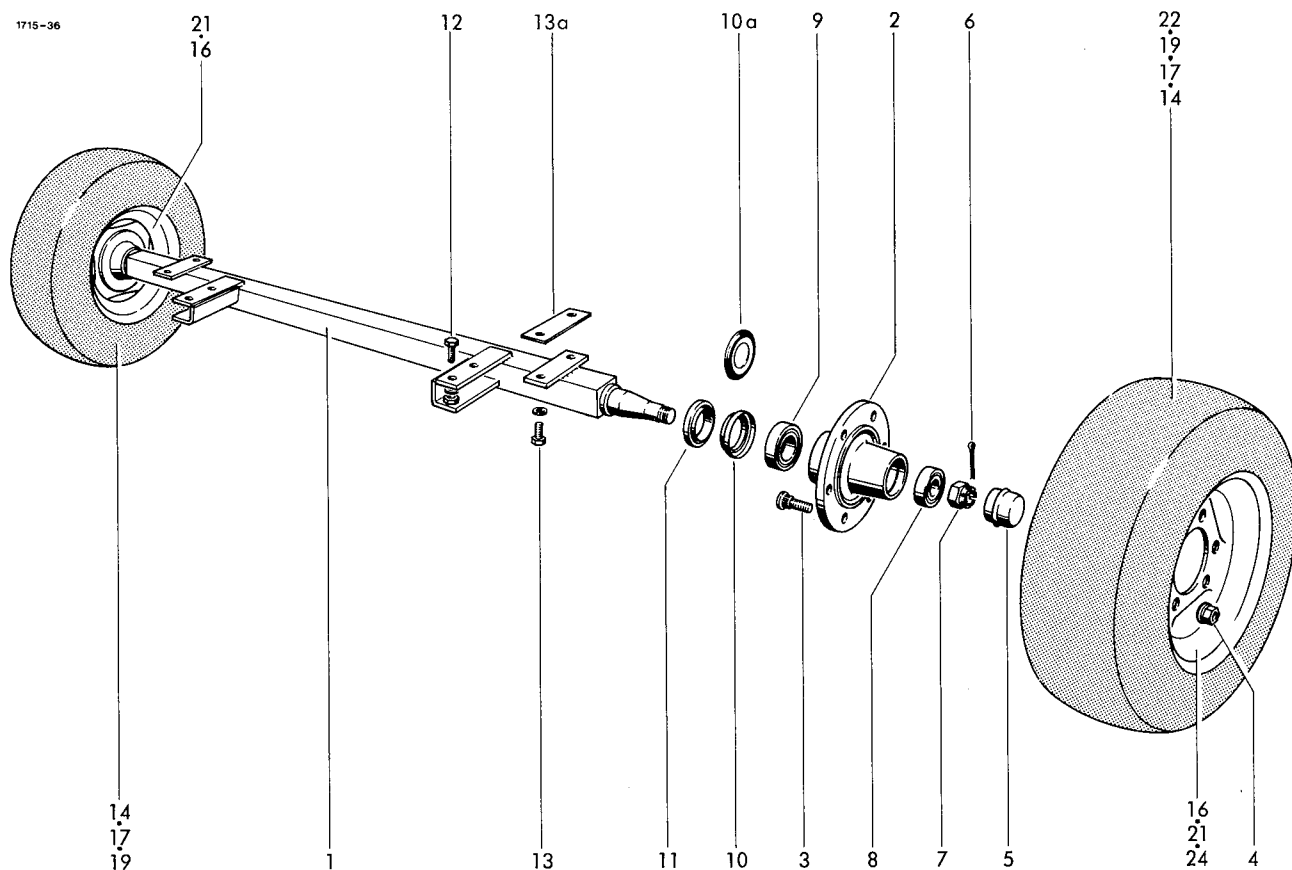
K

Teilnummern-Verzeichnis

Part-Number Index — Répertoire Numérique des Pièces de Rechange

Indice del Codice — Lista de Numero de Referencias de Piezas

L



AXLE, version A

1-11	0942.10.05.00	axle cpl.
1	0942.30.68.00	axle
2	0942.21.40.00	hub
3	0942.22.89.00	wheel stud
4	0908.88.03.00	wheel nut
5	0942.24.95.00	wheel cap
6	0916.11.99.00	split pin
7	0908.20.18.00	castellated nut
8	0942.20.21.00	tap.roller b.outside
9	0942.20.20.00	tap.roller b.inside
10	0942.22.65.00	seal
11	0942.22.28.00	support ring

AXLE, version B

1-10a	0942.40.02.00	axle cpl. (1850 mm)
	0942.40.03.00	axle cpl. (2000 mm)
1	0942.40.12.00	axle (1850 mm)
	0942.40.13.00	axle (2000 mm)
2	0942.40.22.00	hub
3	0942.40.60.00	wheel stud
4	0942.40.66.00	wheel nut
5	0942.40.32.00	wheel cap
6	0942.40.77.00	split pin
7	0942.40.72.00	castellated nut
8	0942.40.42.00	tap.roller b.outside
9	0942.40.44.00	tap.roller b.inside
10a	0942.40.52.00	seal

FASTENING PARTS

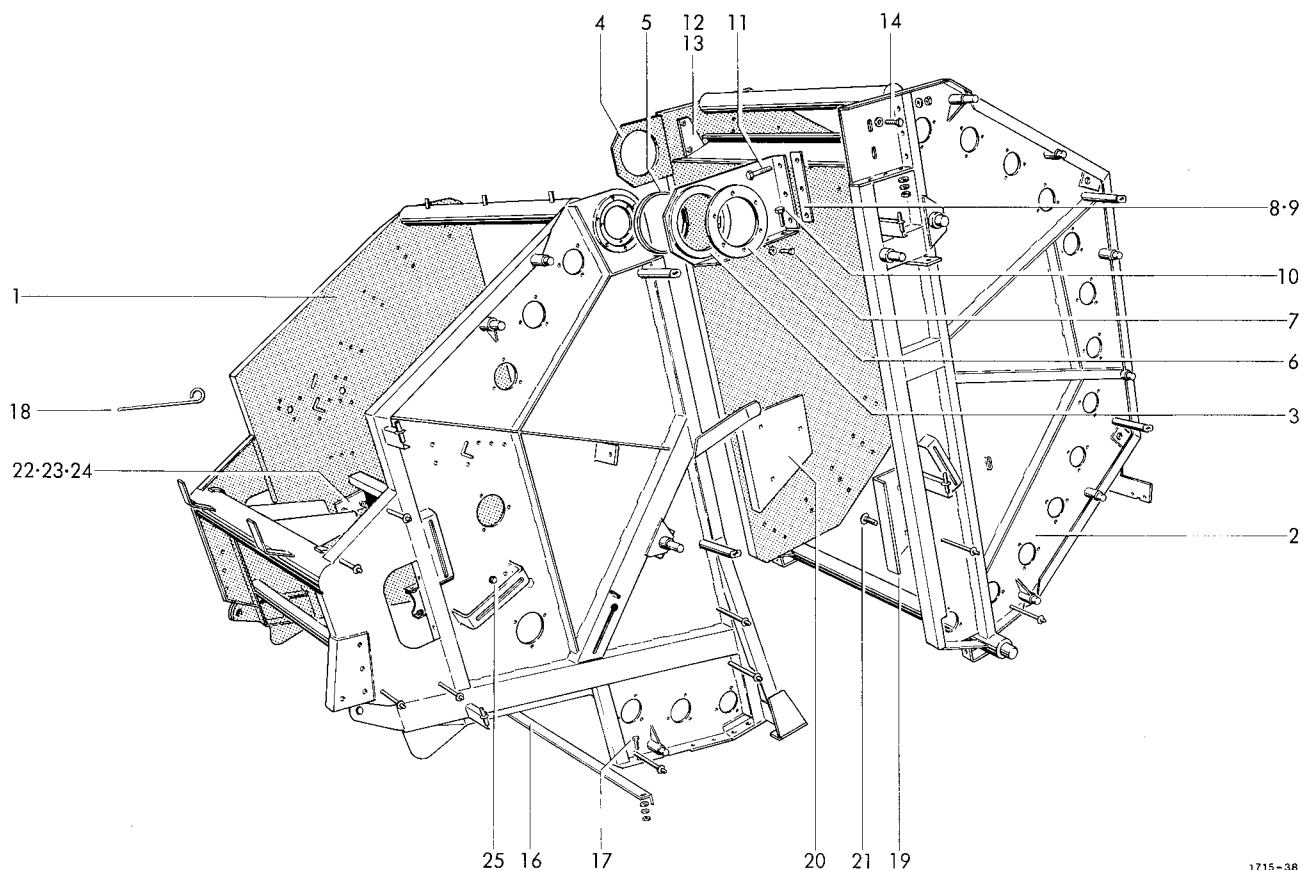
1	12	0901.22.50.00	hex. bolt M 16x40	4
1		0907.10.16.00	hex. nut	4
2		0911.10.16.00	spring washer	4
12	13	0901.21.47.00	hex. bolt M 12x25	4
12		0911.10.12.00	spring washer	4
2	13a	1712.02.51.07	shim as required	

ROAD WHEEL

2	14-16	0944.10.60.00	wheel cpl. standard	2
2	16-18	0944.80.22.00	wheel cpl. extra	2
2	19-21	0944.80.23.00	wheel cpl. special	2
2	22-24	0944.11.23.00	•wheel cpl. special	2
	14	0944.20.60.00	tyre	2
	15*	0944.30.60.00	tube	2
1	16	0944.51.64.00	rim	2
1	17	0944.20.71.00	tyre	2
1	18*	0944.30.68.00	tube	2
1	19	0944.20.23.00	tyre	2
2	20*	0944.30.17.00	tube	2
12	21	0944.51.30.00	rim	2
12	22	0944.21.23.00	•tyre	2
2	23*	0944.30.86.00	•tube	2
2	24	0944.52.20.00	•rim	2

2 • = only for axle 2000 mm

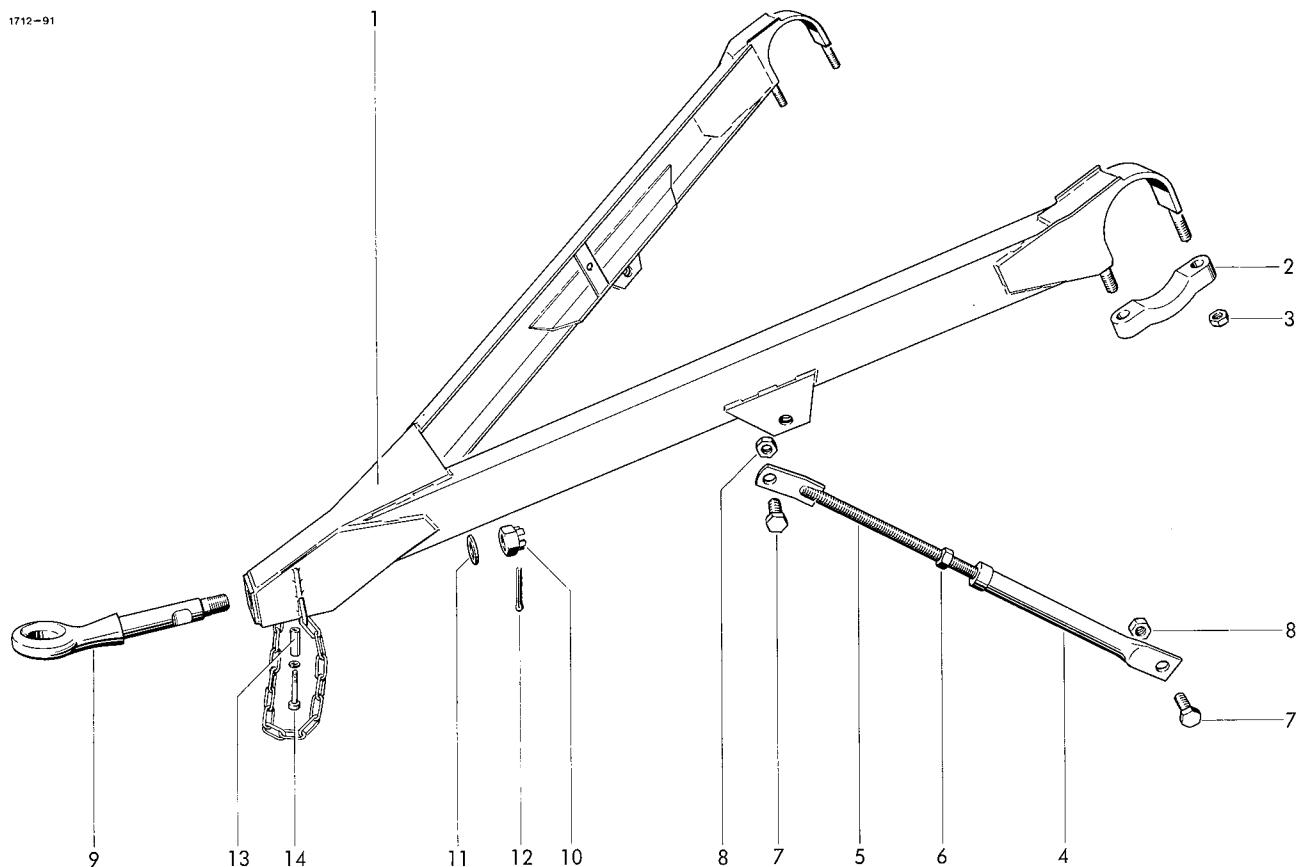
2



1715-38

FRAME

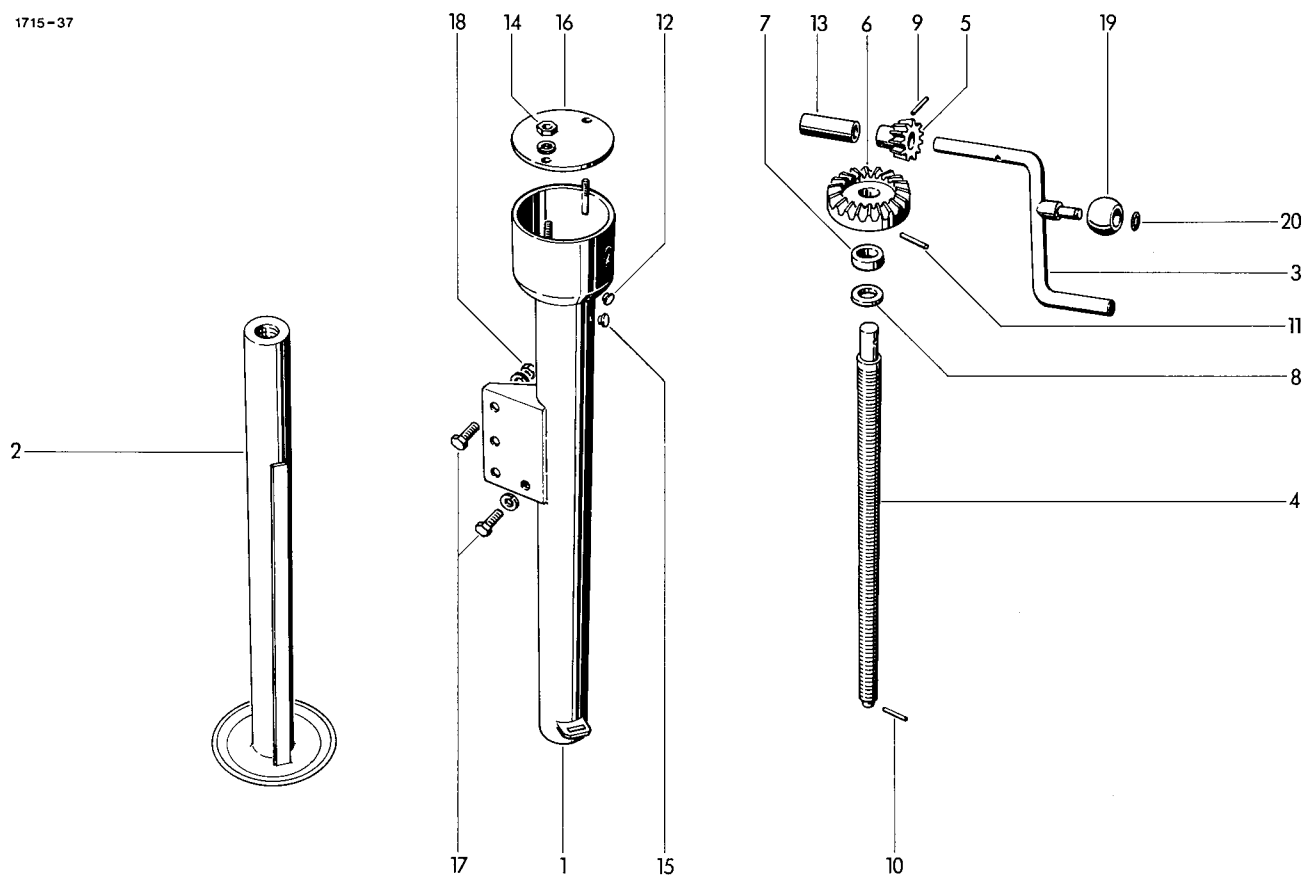
1	1715.03.00.00	housing	1	16	1712.03.05.01	angle	1
2	1715.04.00.00	tail gate	1	17	0901.21.08.00	hex. bolt M 10x25	2
3	1712.07.01.01	hinge, left cpl.	1		0907.10.10.00	hex. nut	2
4	1712.07.02.01	hinge, right cpl.	1		0910.40.11.00	washer	2
5	0920.19.90.00	bush	2		0911.10.10.00	spring washer	2
6	1712.07.01.08	washer	2	18	1712.51.05.13	rod	1
7	0901.20.45.00	hex. bolt M 6x16	10	19	1712.04.07.01	angle shield, left	1
	0911.10.06.00	spring washer	10	20	1712.04.07.02	angle shield, right	1
7a*	0901.20.47.00	hex. bolt for No.3 M 6x20	2	21	0903.10.71.00	cup head bolt M 10x25	6
	0911.10.06.00	spring washer	2		0907.10.10.00	hex. nut	6
8	1712.07.03.01	shim as required	1		0911.10.10.00	spring washer	6
9	1712.07.03.02	shim as required	1	22-24	1712.09.01.01	guide shield cpl.	1
10	0901.21.08.00	hex. bolt M 10x25	6	22	1712.09.01.02	guide shield	1
	0907.10.10.00	hex. nut	6	23	1712.09.01.08	strip	1
	0910.15.11.00	washer	6	24	0903.10.70.00	cup head bolt M 10x20	6
	0911.10.10.00	spring washer	6		0907.10.10.00	hex. nut	6
11	0901.11.05.00	hex. bolt M 10x60	6		0911.10.10.00	spring washer	6
	0907.10.10.00	hex. nut	6	25	0901.21.06.00	hex. bolt M 10x20	4
	0911.10.10.00	spring washer	6		0907.10.10.00	hex. nut	4
12	1712.09.01.02	guide shield	1		0911.10.10.00	spring washer	4
13	0901.21.11.00	hex. bolt M 10x35	2	26*	1712.03.02.41	channel section	1
	0907.10.10.00	hex. nut	2	27*	0901.21.08.00	hex. bolt M 10x25	2
	0911.10.10.00	spring washer	2		0907.10.10.00	hex. nut	2
14	0901.21.12.00	hex. bolt M 10x40	2		0911.10.10.00	spring washer	2
	0907.10.10.00	hex. nut	2				
	0911.10.10.00	spring washer	2				



DRAWBAR

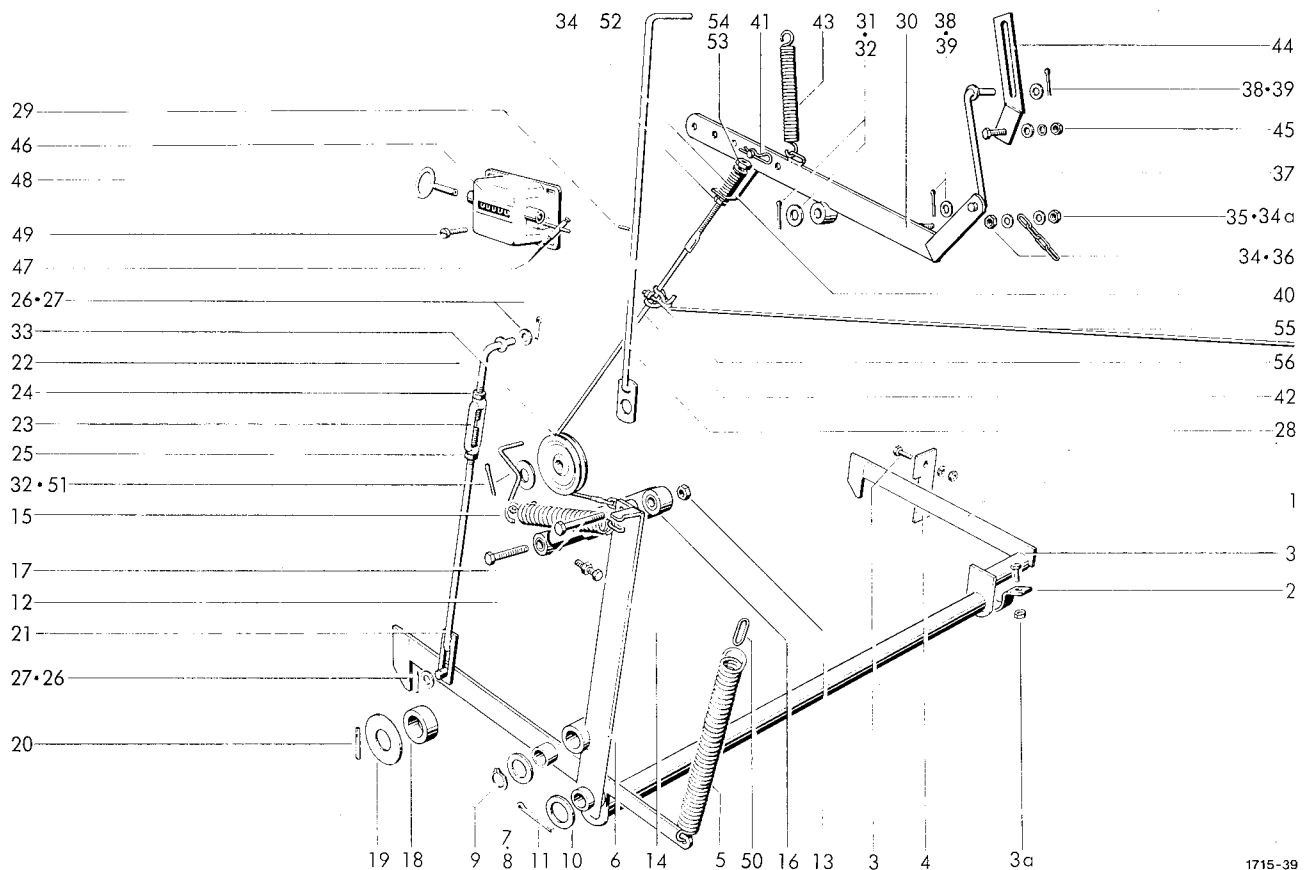
1	1712.05.01.01	drawbar	1	9	0937.51.38.00	hitch cpl. with No 10-12	1
2	0331.85.00.00	clamp	2		0937.51.37.00	hitch cpl. with No 10-12	1
3	0907.60.16.00	safety nut	4	10	0908.10.30.00	castellated nut M 30	1
4-6	1712.05.02.01	stay	2	11	0910.81.46.00	washer	1
4	1712.05.02.02	bush	2	12	0916.11.18.00	split pin	1
5	1712.05.02.06	rod	2	13	1712.05.03.06	bush	1
6	0907.10.20.00	hex. nut M 20	2	14	0902.10.70.00	cheese head bolt M 10x55	1
7	0901.23.50.00	hex. bolt M 20x50	4		0911.10.10.00	spring washer	1
8	0907.60.20.00	safety nut NM 20	4				

● = 50mm in Dia. / extra equipment



JACK

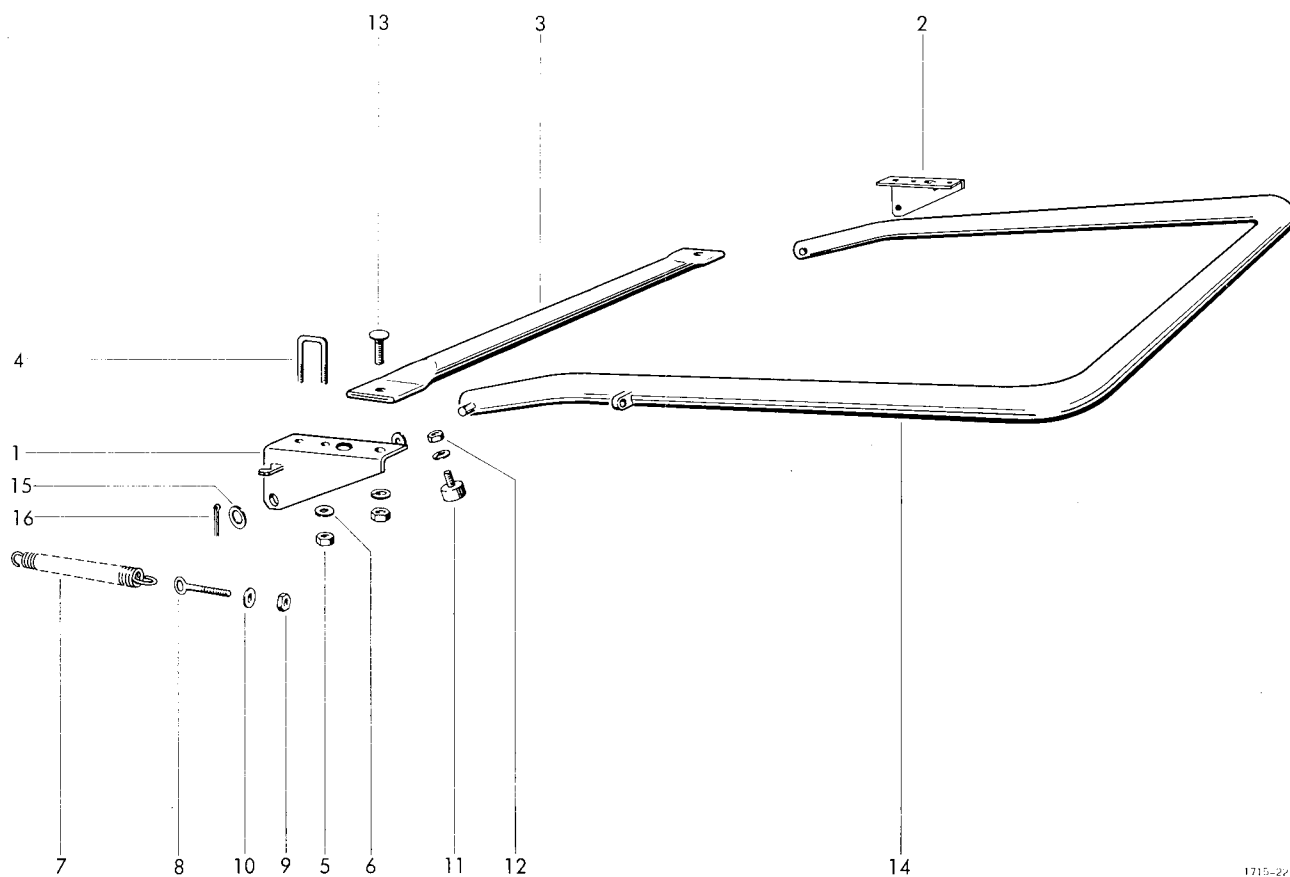
1-16	0944.94.01.00	jack cpl.	1	12	0944.92.97.00	plug	2
1	0944.91.50.00	tube	1	13	0944.92.96.00	spacer tube	1
2	0944.91.71.00	inner tube	1	14	0907.10.08.00	hex. nut M 8	2
3	0944.92.38.00	crank handle	1		0911.10.08.00	spring washer	2
4	0944.92.03.00	spindle	1	15	0944.92.98.00	plug	1
5	0944.92.71.00	bevel gear	1	16	0944.92.90.00	cover	1
6	0944.92.70.00	bevel gear	1	17	0901.21.50.00	hex. bolt M 12x35	4
7	0944.93.41.00	tapered roller bearing	1		0911.10.12.00	spring washer	4
8	0944.92.94.00	washer	1	18	0907.10.12.00	hex. nut M 12	3
9	0915.51.55.00	expending pin	1	19	0944.92.40.00	ball	1
10	0915.51.94.00	expending pin	1	20	0944.92.98.00	snap ring	1
11	0915.51.89.00	expending pin	1				



1715-39

LOCKING DEVICE

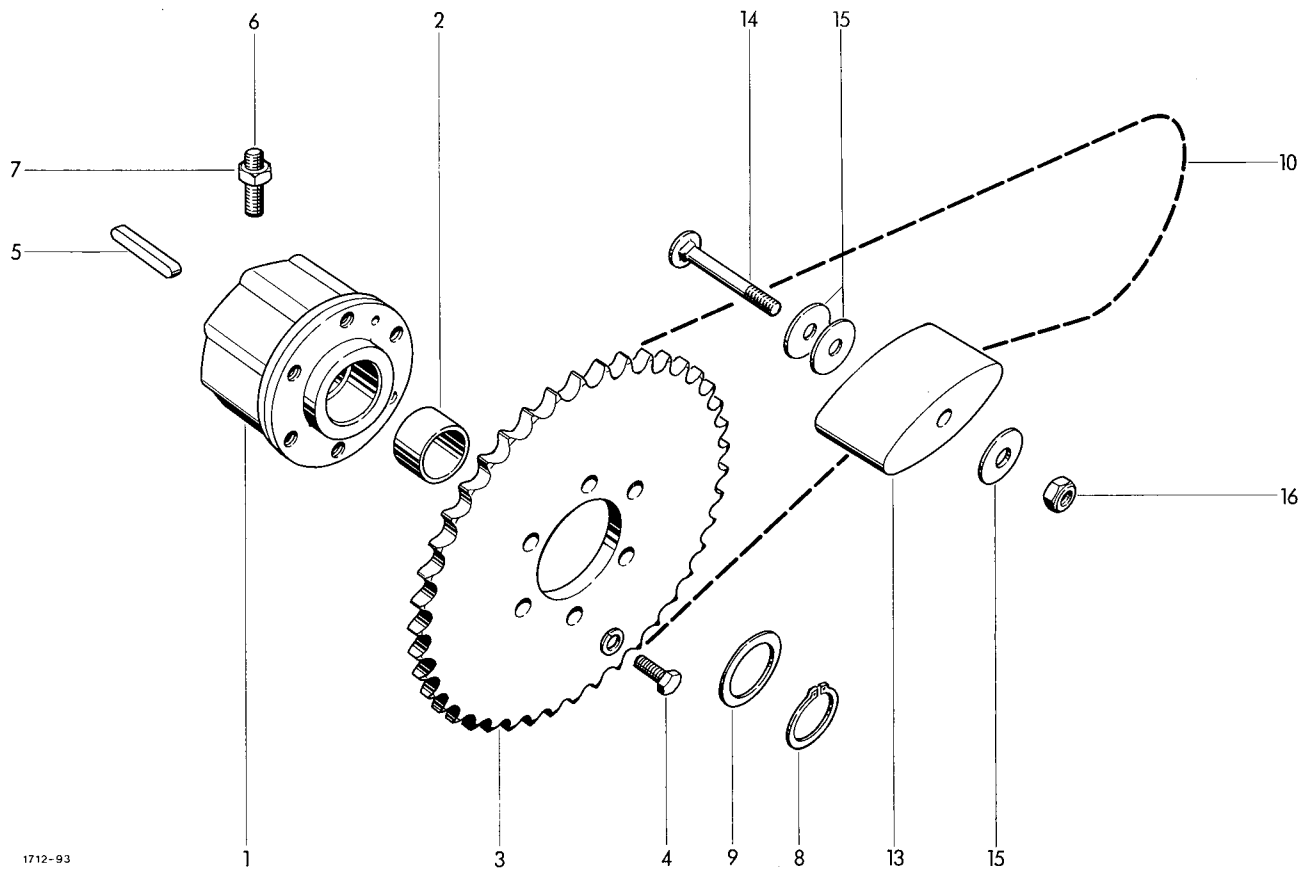
1	1712.08.01.01	locking frame	1	30	1715.08.05.01	lever	1
2	1712.08.01.14	clamp	1	31	0910.10.21.00	washer	1
3	0901.20.68.00	hex. bolt M 8x25	4	32	0916.10.99.00	split pin	2
	0907.10.08.00	hex. nut	2	33	0726.15.00.00	roller	1
	0911.10.08.00	spring washer	2	34	0907.10.08.00	hex. nut M 8	3
3a	0907.60.08.00	safety nut NM 8	2	34a	0907.60.08.00	safety nut NM 8	1
4	1712.08.01.19	guide plate	1	35	0910.15.09.00	washer	2
5	0940.25.45.00	tension spring	1	36	0935.11.04.00	chain	1
6	1715.08.02.01	tension lever w.No.7	1	37	1715.08.05.18	rod	1
7	0920.15.34.00	bush	1	38	0910.15.11.00	washer	2
8	0910.84.45.00	shim as required	1	39	0916.10.68.00	split pin	2
9	0912.10.35.00	circlip	1	40	1712.08.05.26	angle	1
10	0910.81.97.00	washer	2	41	0916.21.03.00	spring clip	1
11	0916.11.30.00	split pin	1	42	0936.45.11.00	rope	1
12	0901.11.46.00	hex. bolt M 12x75	1	43	0940.23.47.00	tension spring	1
13	0907.60.12.00	safety nut NM 12	1	44	1715.08.05.35	angle	1
14	0901.21.53.00	hex. bolt M 12x50	1	45	0901.21.06.00	hex. bolt M 10x20	1
	0911.10.12.00	spring washer	1		0907.10.10.00	hex. nut	1
15	0940.25.21.00	tension spring	1		0910.40.11.00	washer	1
16	0940.96.01.00	shock absorber	1		0911.10.10.00	spring washer	1
17	0901.21.53.00	hex. bolt M 12x50	1	46	0995.10.01.00	bale counter cpl. with No. 47+48	1
	0907.10.12.00	hex. nut	1		0995.10.34.00	spring lever	1
18	1712.08.03.11	roller	2	47	0995.10.33.00	key f. bale counter	1
19	1712.08.03.12	washer	2	48	0902.24.24.00	cheese head bolt M 10x40	4
20	0915.51.66.00	expanding pin	2	49	0911.10.04.00	spring washer	4
21-27	1715.08.04.01	rod cpl.	1		0907.10.04.00	hex. nut	4
21	1715.08.04.02	rod	1		0935.13.01.00	chain link	1
22	1712.08.04.06	hook	1	50	1712.08.05.35	safety brake	1
23	0908.82.04.00	turnbuckle nut M 12	1	51	0940.12.70.00	tension spring	1
24	0907.10.12.00	hex. nut M 12	1	52	0910.10.08.00	washer	1
25	0907.10.13.00	hex. nut M 12	1	53	0907.80.08.00	safety nut	1
		left thread		54	0936.49.50.00	rope	1
26	0910.15.14.00	washer	3	55	0936.90.03.00	rope clamp	1
27	0916.10.99.00	split pin	2				
28	1715.08.04.17	rod with No.29	1				
29	0915.50.91.00	expanding pin	1				



1715-2v

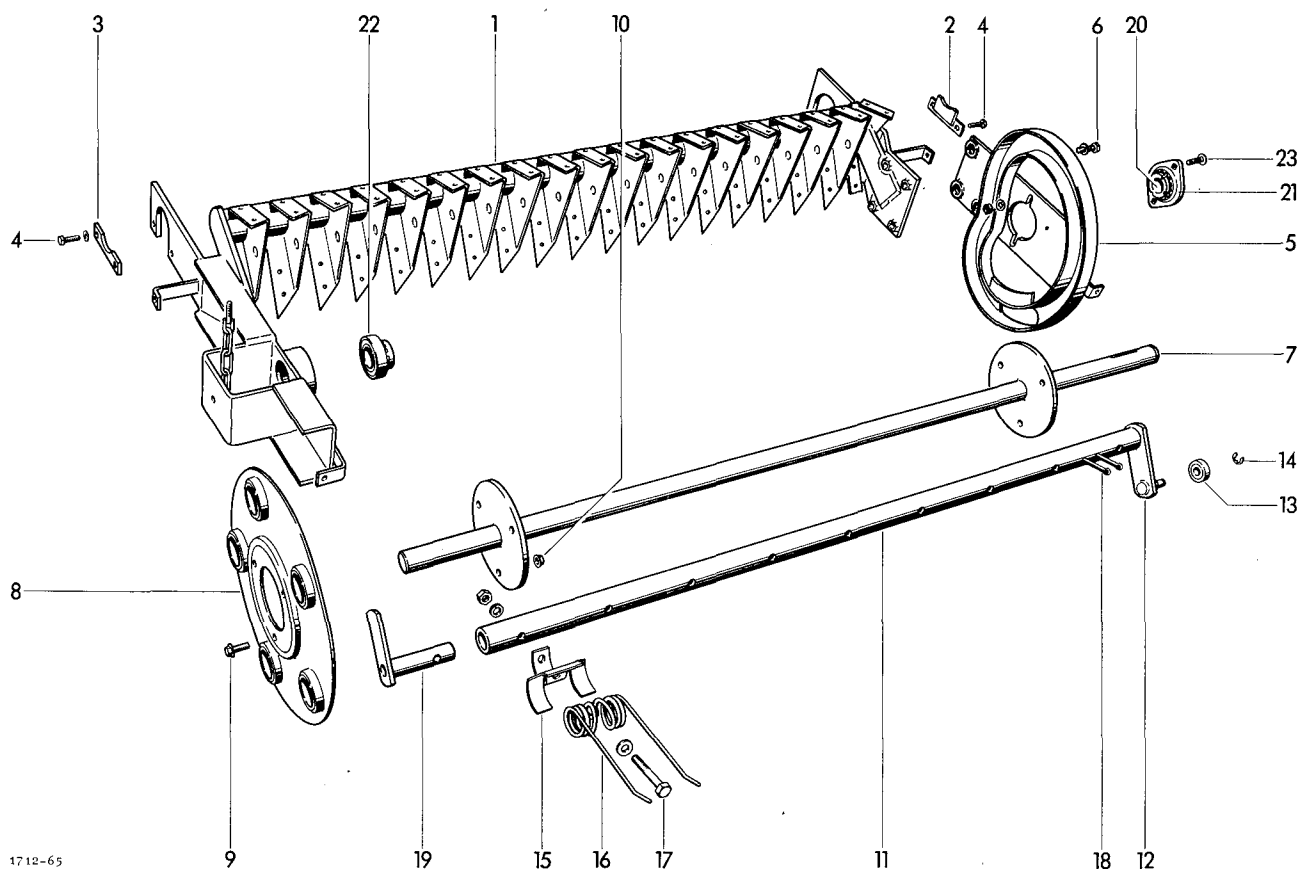
BALE EJECTOR
Extra equipment

1-16	1715.92.00.00	bale ejector cpl.	1	10	0910.10.13.00	washer	2
1	1712.92.01.01	bearing block	1	11	0938.98.40.00	rubber buffer	2
2	1712.02.01.08	bearing block	1	12	0907.10.08.00	hex. nut M 8	2
3	1712.92.01.16	tube	1		0911.10.08.00	spring washer	2
4	1712.92.01.17	rod	2	13	0903.10.72.00	cup head bolt M 10x30	2
5	0907.60.14.00	safety nut NM 14	4		0907.10.10.00	hex. nut	2
6	0910.25.15.00	washer	6		0911.10.10.00	spring washer	2
7	0940.25.45.00	tension spring	2	14	1715.92.02.01	rod	1
8	0903.39.13.00	eyebolt M 12x100	2	15	0910.15.22.00	washer	4
9	0907.60.12.00	safety nut NM 12	2	16	0916.11.12.00	split pin	2



PICK UP DRIVE

1	0930.34.18.00	star ratchet clutch with No.2	2	10	0934.16.36.00	roller chain	1
2	0920.14.20.00	bush	2	11*	0934.64.88.00	connecting link for No.10	1
3	0309.52.00.00	chain sprocket	2	12*	0934.60.88.00	cranket link	1
4	0901.20.66.00	hex. bolt M 8x20	6	13	0934.99.01.00	tension block	1
	0911.10.08.00	spring washer	6	14	0903.10.96.00	cup head bolt M 10x90	1
5	0913.10.50.00	feather key	1	15	0910.40.11.00	washer	3
6	0904.70.51.00	stud M 10x12	1	16	0907.60.10.00	safety nut NM 10	1
7	0907.10.10.00	hex. nut M 10	1				
8	0912.10.30.00	circlip	1				
9	0910.72.50.00	shim 0,1mm thick as required					
	0910.72.52.00	shim 0,3mm thick as required					
	0910.72.54.00	shim 1,0mm thick as required					



PICK-UP FRAME

1	1712.42.01.01	frame
2	1712.42.01.25	bracket
3	1712.42.01.28	stop
4	0901.20.66.00	hex. bolt M 8x20
	0911.10.08.00	spring washer
5	1712.42.01.35	guide plate
6	0901.21.50.00	hex. bolt M 12x35
	0911.10.12.00	spring washer

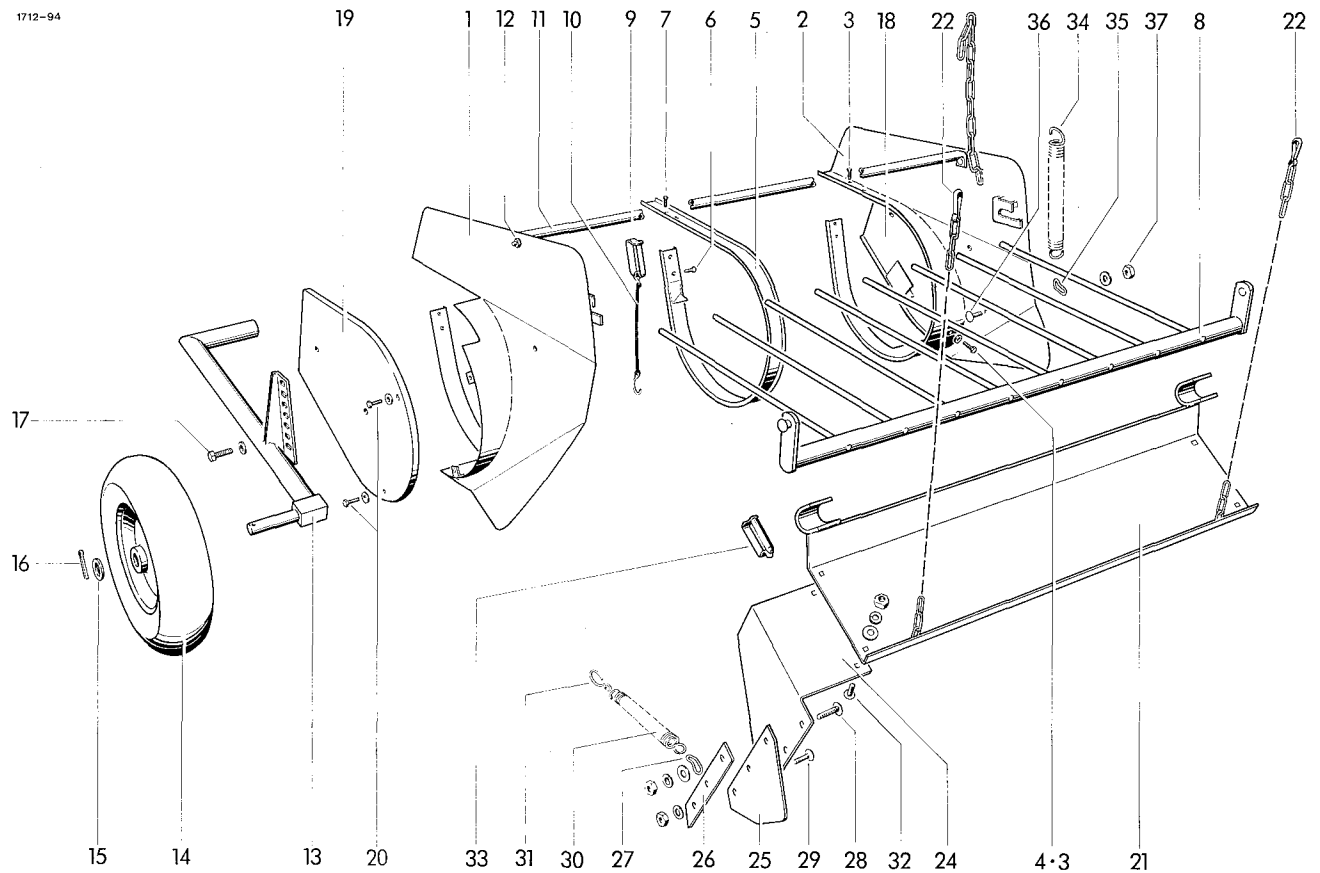
1	16	0940.52.25.00	spring	45
1	17	0901.11.05.00	hex. bolt M 10x60	45
1		0907.10.10.00	hex. nut	45
4		0911.10.10.00	spring washer	45
4		0910.15.11.00	washer	45
1	18	0916.11.28.00	split pin	10
4	19	1121.42.02.31	guide	5
4				

PICK-UP DRUM

7	1712.42.02.01	centre shaft
8	1121.42.02.06	bearing plate
9	0901.80.46.00	safety bolt M 8x20
10	0907.81.08.00	safety nut M 8
11-14	1712.42.02.12	tine bar cpl.
11	1712.42.02.13	tine bar with No.12
12	1121.42.02.36	lever
13	0922.18.03.00	ball bearing
14	0912.50.10.00	safety washer
15	0338.30.00.00	tine holder

20+21	0924.20.30.00	flange housing with	
1		adjustable bearing	1
2	20	0922.18.17.00	ball bearing with
6		tapered sleeve	1
6	21	0924.20.31.00	housing parted
5	22	0922.18.17.00	ball bearing with
5		tapered sleeve	1
5	23	0903.10.71.00	cup head bolt M 10x25
5		0907.10.10.00	hex. nut
5		0911.10.10.00	spring washer
45			

REEL-BEARING



SIDE SHIELD

1	1712.42.04.01	side shield	1
2	1712.42.04.13	side shield	1
3	0905.19.11.00	tapping screw M6x15	10
4	0910.10.06.00	washer	2

SEGMENT

5	1712.42.05.05	segment	17
6	0905.19.11.00	tapping screw M6x15	34
7	0905.19.12.00	tapping screw M6x20	34

WINDGUARD

8	1712.42.06.01	windguard	1
9	0918.19.12.00	spring pin	2
10	0937.19.03.00	safety clip	2
11	1712.42.11.01	rod	1
12	0903.10.40.00	cup head bolt M8x16	2
	0907.10.08.00	hex. nut	2
	0911.10.08.00	spring washer	2

PICK-UP GUIDE WHEEL

13	1712.42.08.01	wheel bracket	1
14	0944.90.61.00	guide wheel	1
15	0910.25.26.00	washer	1
16	0916.11.24.00	split pin	1
17	0901.21.47.00	hex. bolt M 12x25	1
	0910.10.13.00	washer	1

GUARD

18	1712.42.09.01	guard	1
19	1712.42.09.02	guard	1
20	0901.20.42.00	hex. bolt M 6x10	6
	0910.60.06.00	washer	6

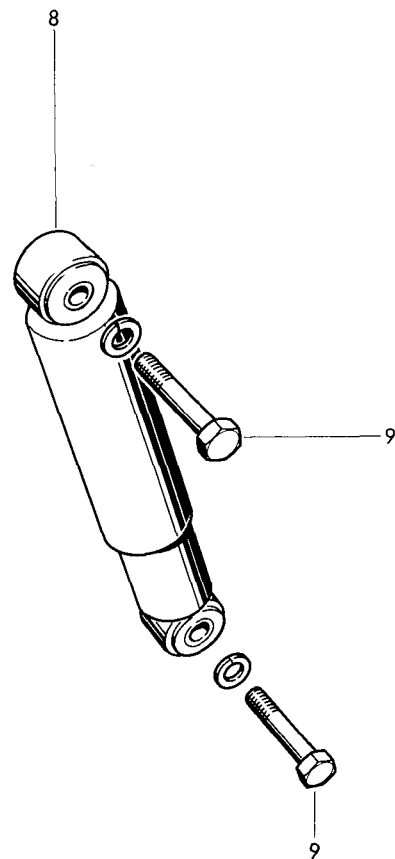
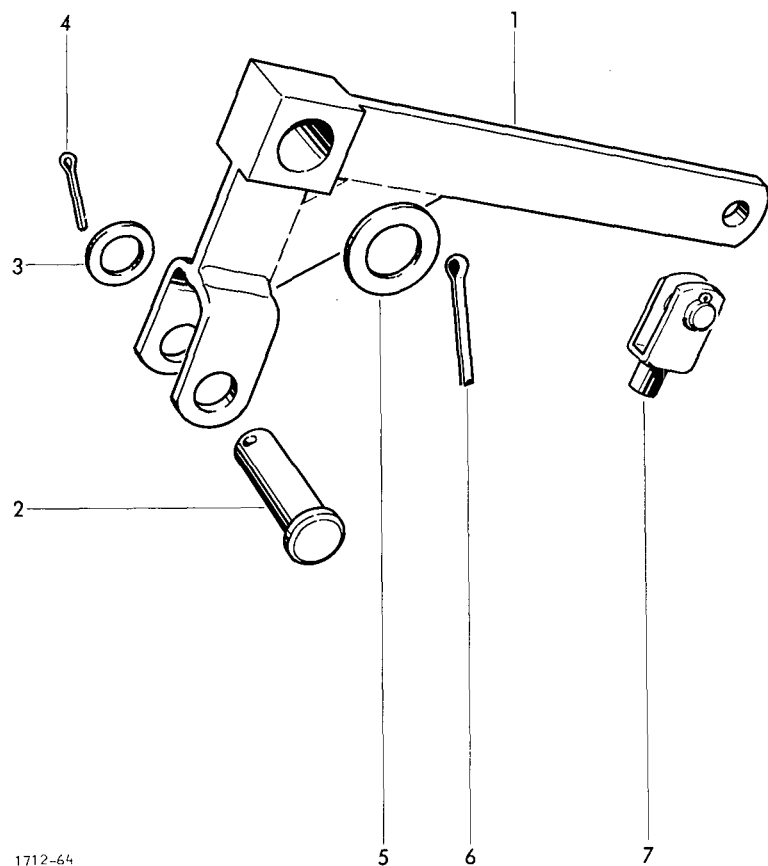
SHIELD

Extra equipment

21-33	1712.42.90.00	pick-up guide shield cpl.	1
21	1712.42.90.01	shield	1
22	0937.28.99.00	safety hook	2
23*	1712.42.90.10	angle shield, left	1
24	1712.42.90.11	angle shield, right	1
25	0938.96.30.00	rubber plate	2
26	1712.42.90.13	bracket	2
27	0935.11.02.00	chain link	2
28	0903.10.18.00	cup head bolt M6x30	2
	0907.10.06.00	hex. nut	2
	0910.60.06.00	washer	2
	0911.10.06.00	spring washer	2
29	0903.10.17.00	cup head bolt M6x25	4
	0907.10.06.00	hex. nut	4
	0911.10.06.00	spring washer	4
30	0940.22.30.00	tension spring	2
31	0937.17.19.00	hook	2
32	0903.10.70.00	cup head bolt M10x20	4
	0907.10.10.00	hex. nut	4
	0910.15.11.00	washer	4
	0911.10.10.00	spring washer	4
33	0918.19.12.00	spring pin	2

PICK-UP BALANCE SPRING

34	0940.25.21.00	tension spring	1
35	0935.13.03.00	chain link	1
36	0903.10.71.00	cup head bolt M10x25	1
	0910.60.10.00	washer	1
37	0907.60.10.00	safety nut NM 10	1

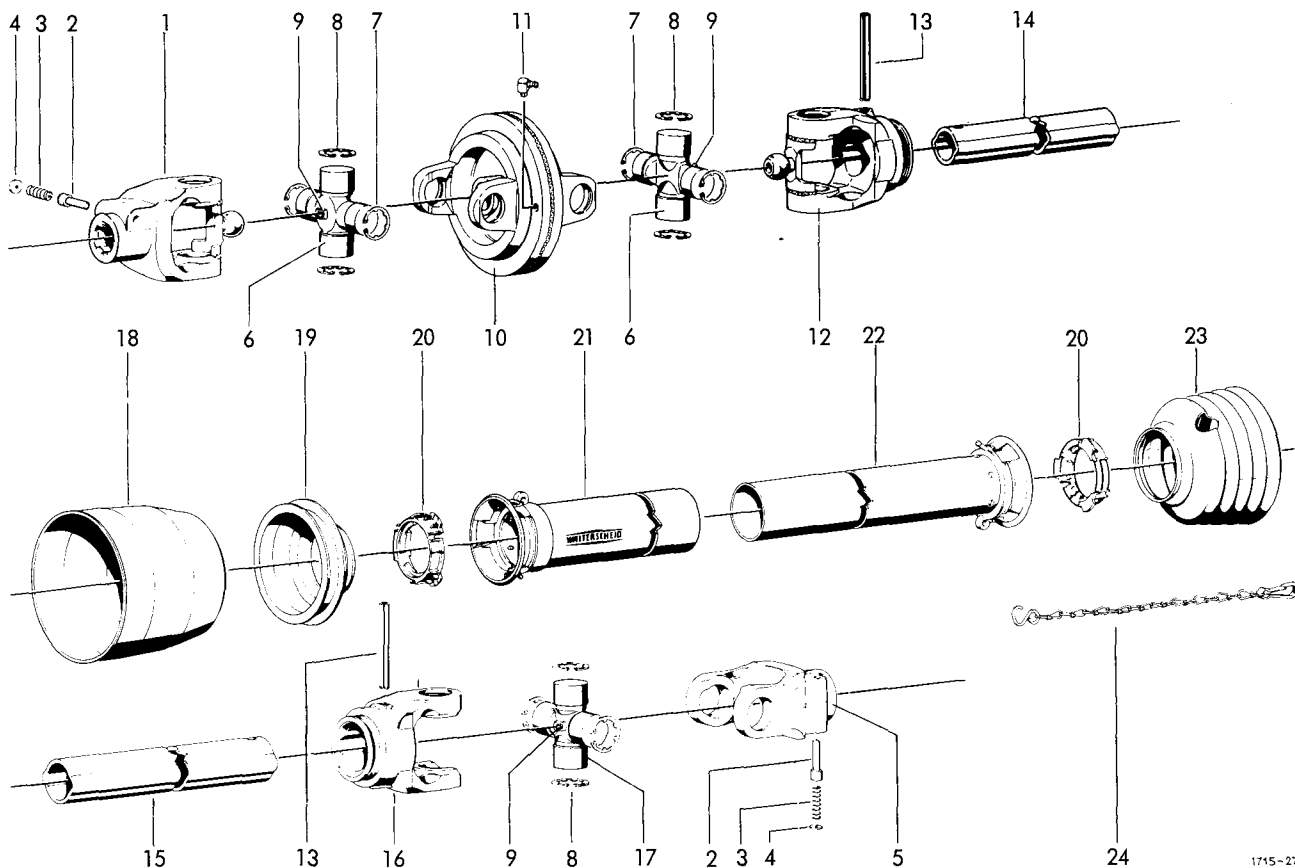


PICK UP LIFTING DEVICE

1	1712.43.01.01	lever	1
2	0917.31.46.00	pin	1
3	0910.10.17.00	washer	1
4	0916.10.97.00	split pin	1
5	0910.10.21.00	washer	1
6	0916.11.12.00	split pin	1
7	0919.71.10.00	link joint with split pin	1

SHOCK ABSORBER

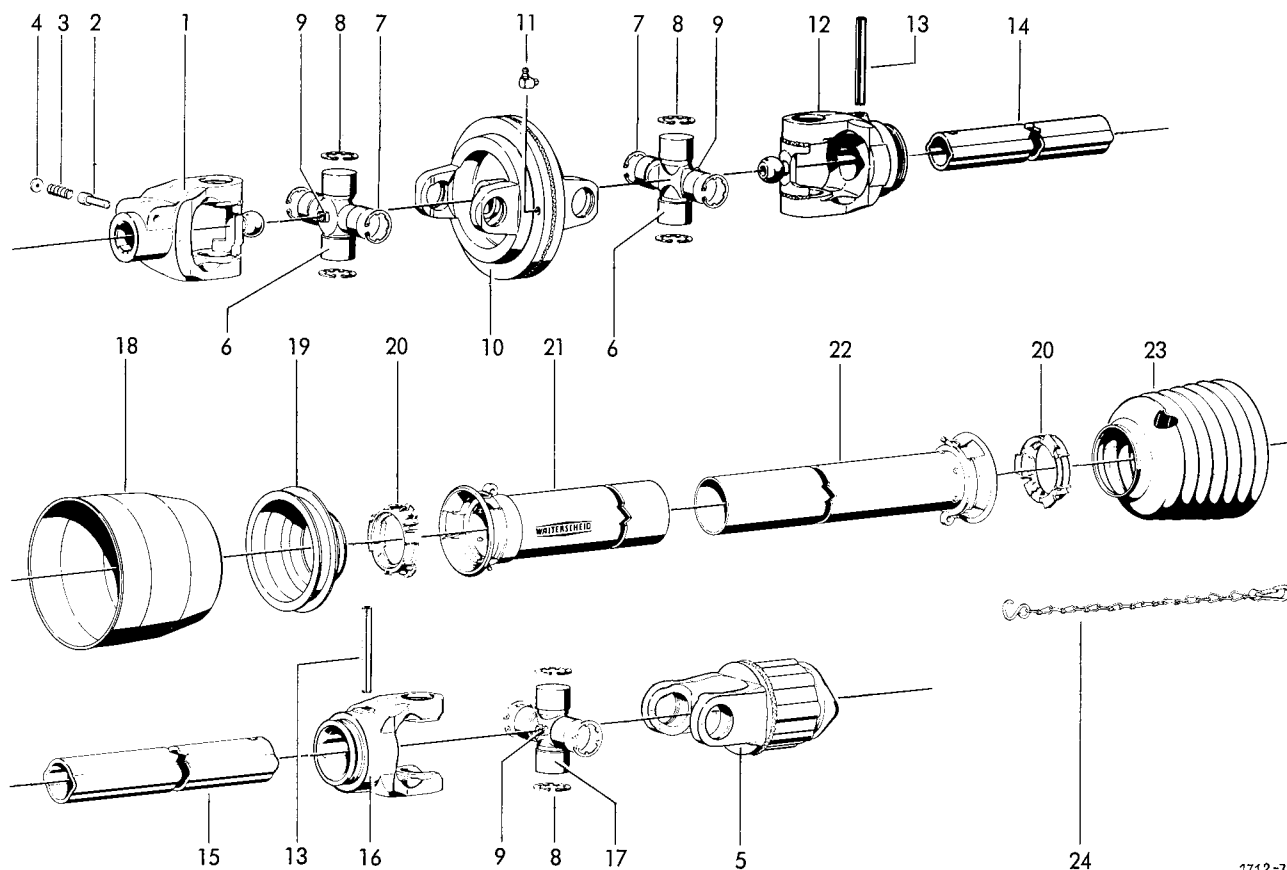
1	8	0940.96.01.00	shock absorber	1
1	9	0901.21.53.00	hex. bolt M 12x50	2
1		0911.10.12.00	spring washer	2



WIDE-ANGLE PTO DRIVE SHAFT

1-24	0930.13.08.00	wide-angle pto drive shaft	1	13	0915.52.22.00	expanding pin	2
1	0930.22.21.00	connecting yoke with No.2-4	1	14	0930.42.43.00	+profil tube	1
2	0930.41.03.00	sliding pin	2	15	0930.42.40.00	+profil tube	1
3	0930.40.26.00	tension spring	2	16	0930.26.70.00	yoke	1
4	0930.28.01.00	washer	2	17	0930.20.14.00	spider unit with No 8+9	1
5	0930.22.18.00	connecting yoke with No.2-4	1	18	0930.45.07.00	guard funnel	1
6	0930.20.16.00	spider unit with No.7-9	2	19	0930.45.31.00	guard funnel	1
7	0930.31.04.00	safety ring	4	20	0930.50.40.00	guide ring	2
8	0930.31.08.00	safety ring	8	21	0930.44.77.00	+outer guard tube with cover	1
9	0926.10.10.00	grease nipple	3	22	0930.44.18.00	+outer guard tube with cover	1
10	0930.22.60.00	double yoke	1	23	0930.45.20.00	guard funnel	1
11	0926.10.08.00	grease nipple	1	24	0930.49.02.00	holding chain	1
12	0930.26.73.00	yoke	1				

+ = state length

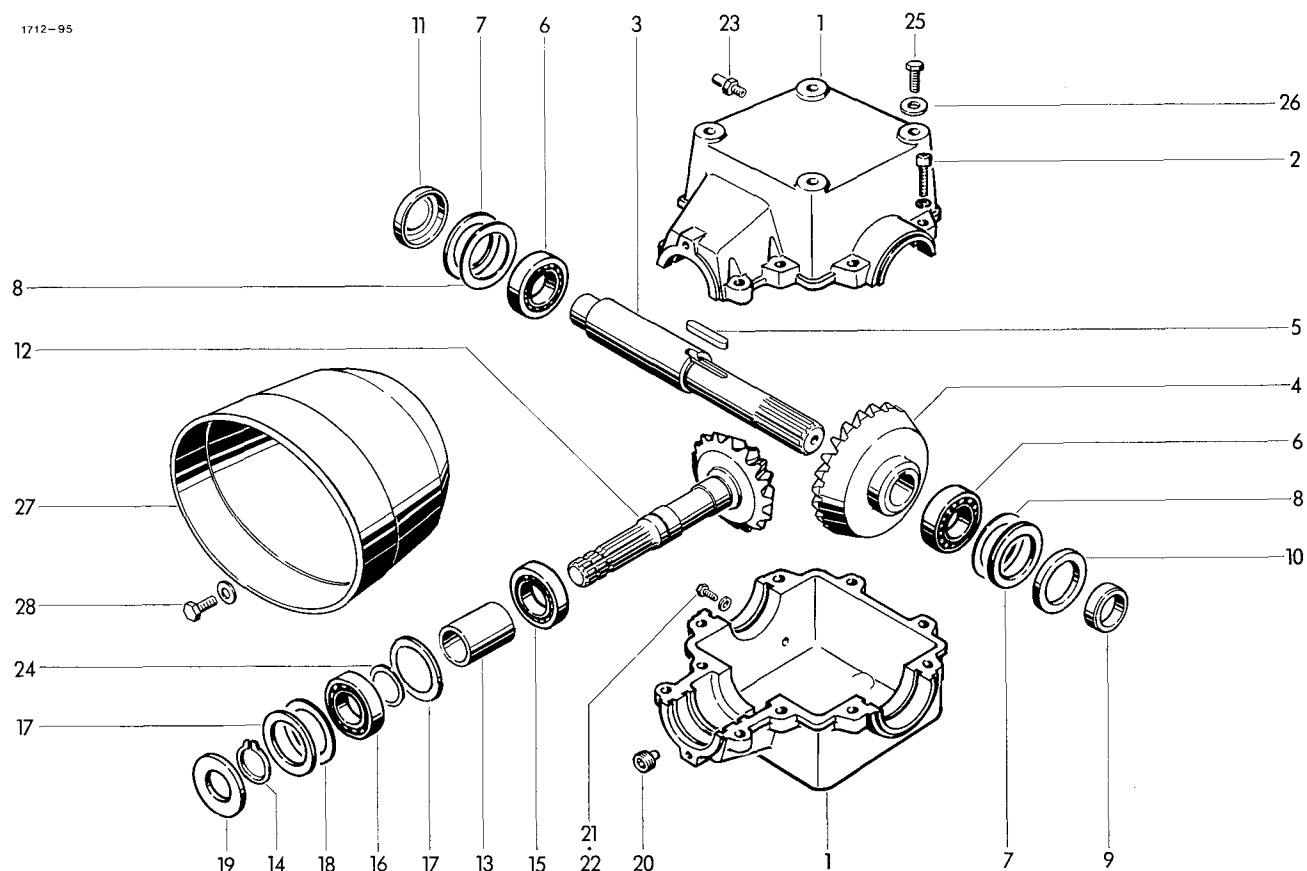


1712-79

WIDE-ANGLE PTO DRIVE SHAFT Extra equipment

1-24	0930.13.06.00	wide-angle pto drive shaft	1	13	0915.52.22.00	expanding pin	2
1	0930.22.21.00	connecting yoke with No.2-4	1	14	0930.42.44.00+	profil tube	1
2	0930.41.03.00	sliding pin	1	15	0930.42.41.00+	profil tube	1
3	0930.40.26.00	tension spring	1	16	0930.26.70.00	yoke	1
4	0930.28.01.00	washer	1	17	0930.20.14.00	spider unit with No.8+9	1
5	0930.34.61.00	clutch	1	18	0930.45.07.00	guard funnel	1
6	0930.20.16.00	spider unit cpl. with No.7-9	2	19	0930.45.31.00	guard funnel	1
7	0930.31.04.00	safety ring	4	20	0930.50.40.00	guide ring	2
8	0930.31.08.00	safety ring	8	21	0930.44.78.00+	outer guard tube with cover	1
9	0926.10.10.00	grease nipple	3	22	0930.44.19.00+	inner guard tube with cover	1
10	0930.22.60.00	double yoke	1	23	0930.45.23.00	guard funnel	1
11	0926.10.08.00	grease nippel	1	24	0930.49.02.00	holding chain	1
12	0930.26.73.00	yoke	1				

+ = state length

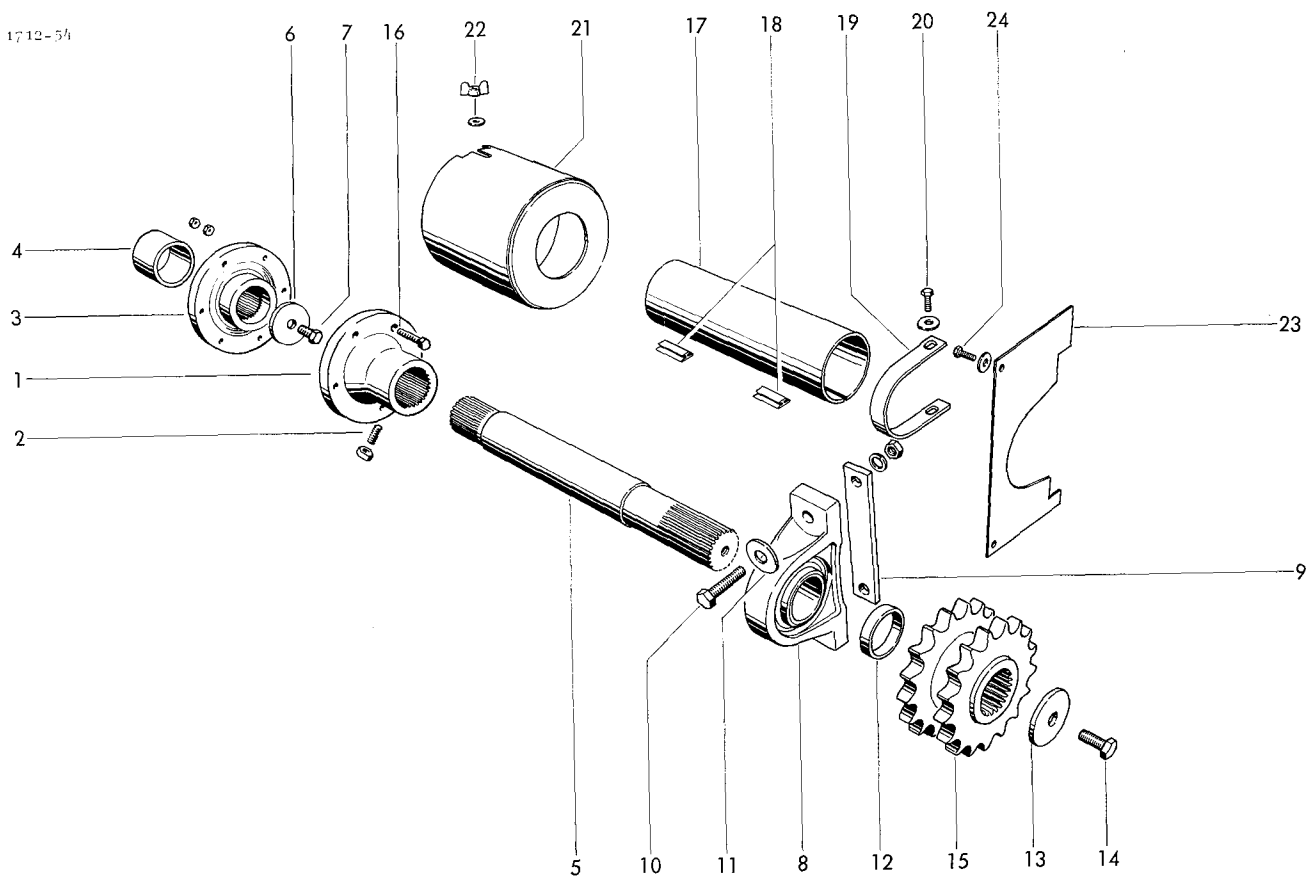


GEAR BOX

1-24	1712.12.01.00	gear box cpl.	1	16	0922.10.28.00	ball bearing	1
	1712.12.92.00	•gear box cpl.	1	17	0910.76.65.00	thrust washer	2
1	1712.12.01.01	gear housing cpl. with No.2	1	18	0910.74.85.00	shim 0,1mm thick as required	
2	0902.11.09.00	cheese head bolt M 12x50	10		0910.74.87.00	shim 0,3mm thick as required	
	0911.10.12.00	spring washer	10		0910.74.88.00	shim 0,5mm thick as required	
3	1712.12.01.10	shaft	1	19	0925.14.40.00	seal	1
4	0307.97.00.00	bevel gear	1	20	0903.80.11.00	lock bolt	
	0307.67.00.00	•bevel gear	1			with magnet	1
5	0913.12.75.00	feather key	1	21	0901.20.45.00	hex. bolt M 6x16	1
6	0922.10.48.00	ball bearing	2	22	0925.40.06.00	seal	1
7	0910.76.75.00	thrust washer	2	23	0926.76.18.00	breather	1
8	0910.75.15.00	shim 0,1mm thick as required		24	0910.73.10.00	shim 0,1mm thick as required	
	0910.75.17.00	shim 0,3mm thick as required			0910.73.12.00	shim 0,3mm thick as required	
	0910.75.18.00	shim 0,5mm thick as required		25	0901.21.49.00	hex. bolt M 12x30	4
9	1712.12.01.16	bush	1		0910.60.13.00	washer	4
10	0925.14.55.00	seal	1				
11	0910.69.90.00	lock washer	1				
12	0307.96.00.00	pinion shaft	1				
	0307.66.00.00	•pinion shaft	1	27	1701.12.03.01	guard	1
13	1702.12.92.26	spacer bush	1	28	0901.20.66.00	hex. bolt M 8x20	2
14	0912.10.40.00	circlip	1		0910.40.09.00	washer	2
15	0922.61.43.00	roller bearing	1				
						GUARD FUNNEL	

• = Gear box 1000/m (extra equipment)

1712-5/4



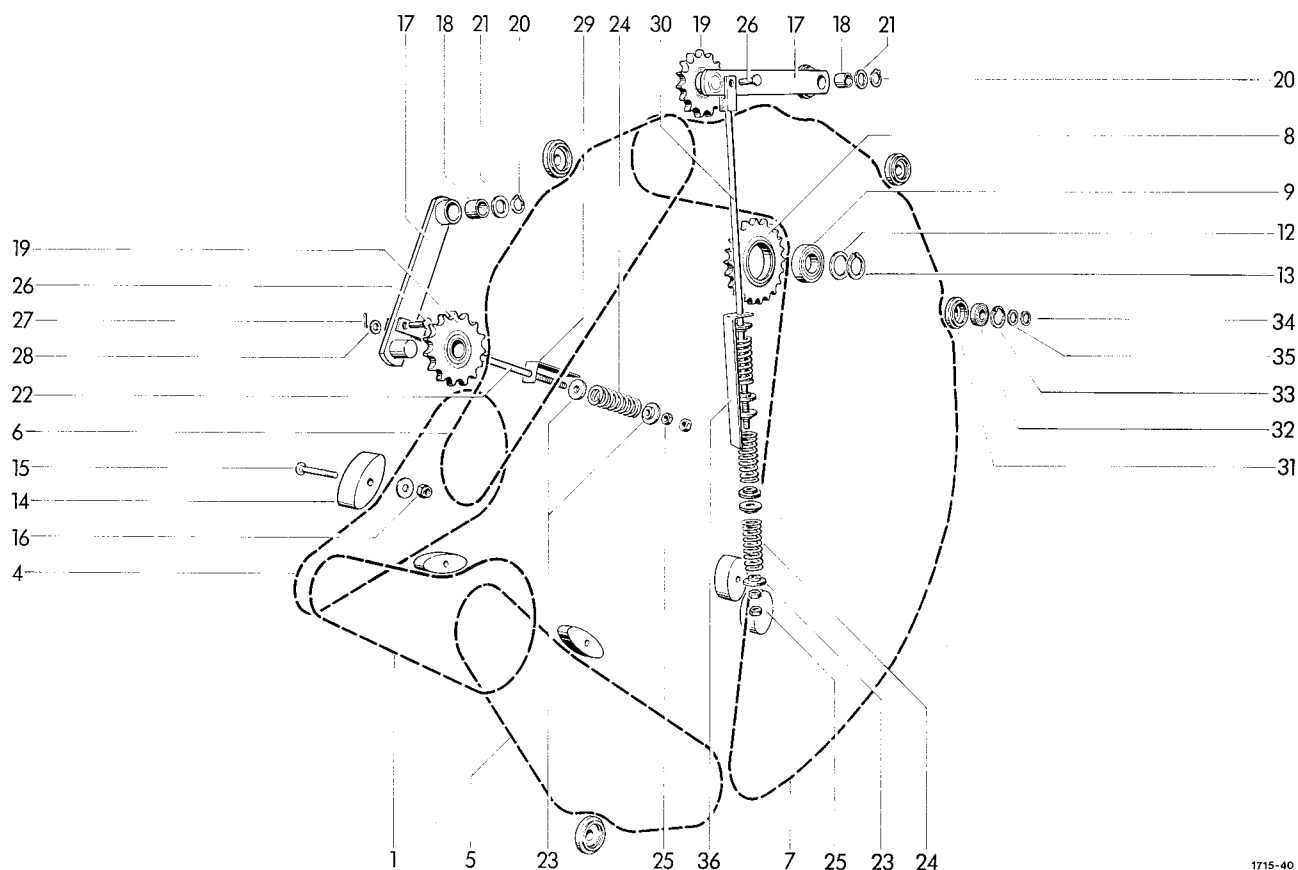
CROSS DRIVE

1	1712.12.03.28	flange
2	0904.70.53.00	stud M 10x20
	0907.10.10.00	hex. nut
3	0336.59.00.00	flange
4	1712.12.03.36	spacer tube
5	1712.12.03.09	shaft
6	0910.80.30.00	washer
7	0901.30.65.00	hex. bolt M 10x20
8	0924.10.36.00	pillow block
9	1712.12.03.13	plate
10	0901.11.43.00	hex. bolt M 12x60
	0907.10.12.00	hex. nut
	0911.10.12.00	spring washer
11	0910.80.39.00	washer
12	1712.12.03.18	bush
13	0910.80.46.00	washer
14	0901.30.88.00	hex. bolt M 12x30
15	1715.12.03.24	chain sprocket

SHEAR BOLT

1	16	0901.10.78.00	hex. bolt M 8x50	1
1		0907.10.08.00	hex. nut	2
1				
1				
1				
1	17	0994.80.17.00	guard tube	1
1	18	0994.80.18.00	clamping piece	2
1	19	1702.51.01.03	clamp	1
1	20	0901.20.66.00	hex. bolt M 8x20	2
1		0910.15.09.00	washer	2
2	21	1712.12.52.08	cover	1
2	22	0908.31.06.00	wing nut M 6	1
2		0910.40.06.00	washer	1
2	23	1712.12.52.14	guard shield	1
1	24	0901.20.45.00	hex. bolt M 6x16	2
1		0910.40.06.00	washer	2
1				
1				

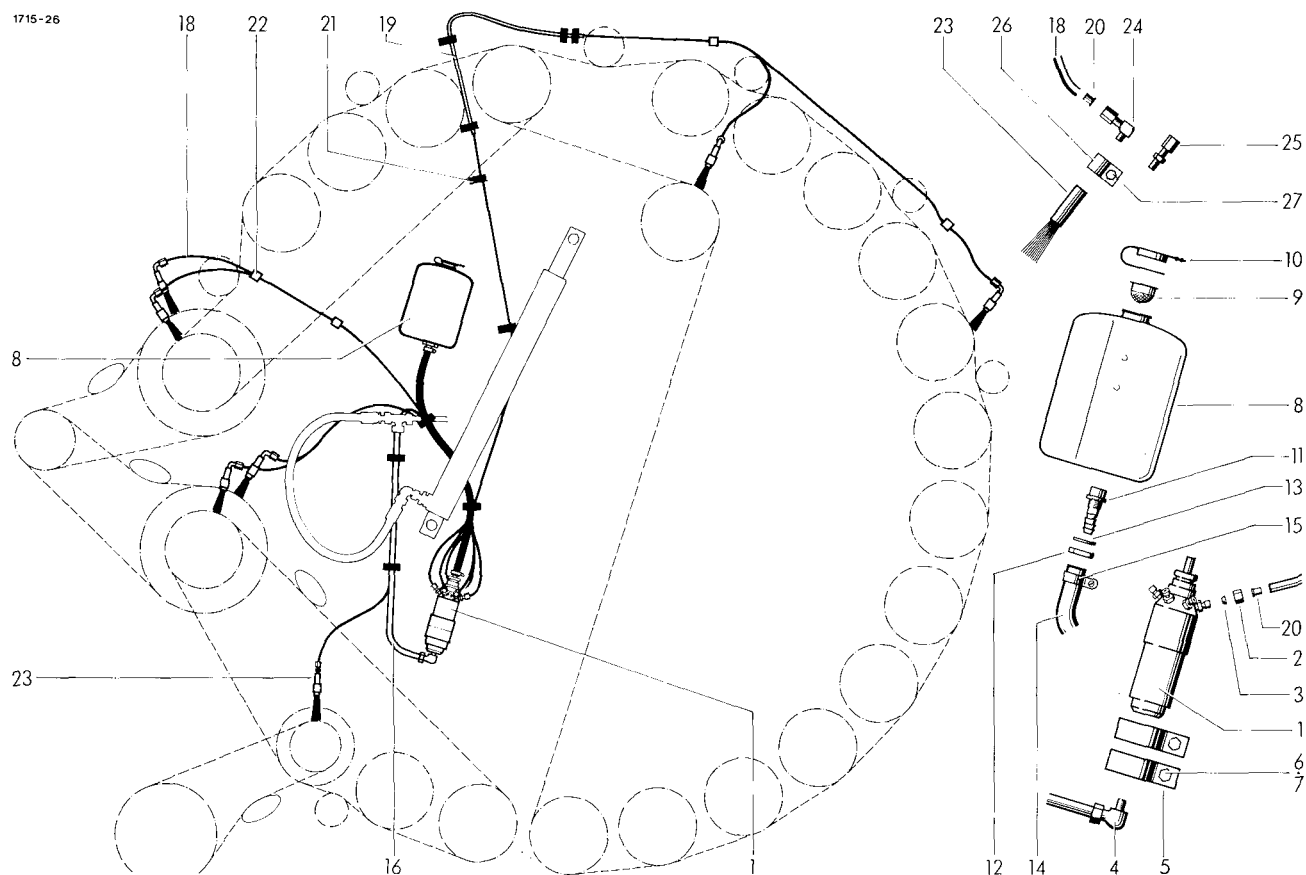
CROSS DRIVE GUARD



1715-40

TRANSMISSIONS PART

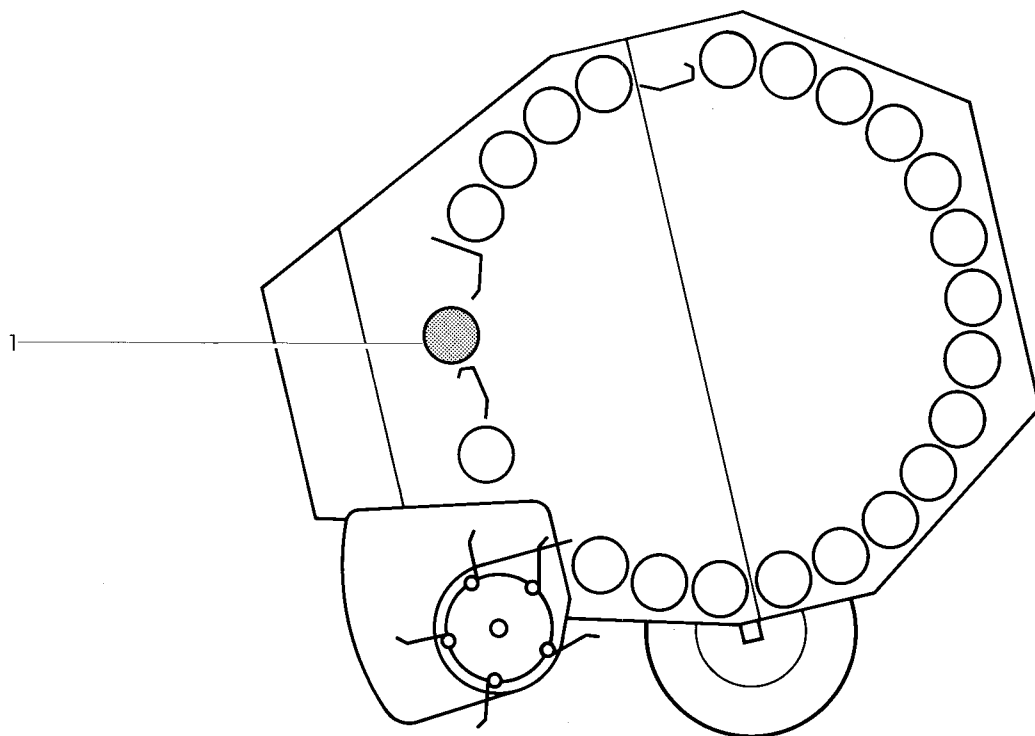
1	0934.18.16.00	roller chain	1	20	0912.10.26.00	circlip	2
2*	0934.65.07.00	connecting link for No.1	1	21	0910.72.05.00	shim as required	
3*	0934.60.90.00	cranket link for No.1	1	22	1715.25.07.14	rod	1
4	0934.18.14.00	roller chain with one	1	23	3203.01.04.11	spring plate	8
5	0934.18.37.00	roller chain connecting	1	24	0940.16.11.00	tension spring	4
6	0934.18.40.00	roller chain link each	1	25	0907.10.12.00	hex. nut M 12	4
7	0934.18.91.00	roller chain	1	26	0917.50.83.00	pin	2
8-9	1712.25.05.10	chain sprocket cpl.	1	27	0910.10.13.00	washer	2
8	0309.56.00.00	chain sprocket	1	28	0916.10.97.00	split pin	2
9	0922.12.59.00	ball bearing	1	29	1712.25.07.24	gauge	1
12	0910.73.10.00	shim 0,1mm thick as required	30	1715.25.08.11	rod	1	
	0910.73.12.00	shim 0,3mm thick as required	31-33	1712.25.09.01	guide roller cpl.	4	
13	0912.10.40.00	circlip	1	31	1712.25.09.02	roller	4
14	0934.99.01.00	tension block	5	32	0922.12.56.00	ball bearing	4
15	0903.10.81.00	cup head bolt M 10x75	5	33	0912.15.52.00	circlip	4
	0910.40.11.00	washer	5	34	0912.10.25.00	circlip	4
16	0907.60.10.00	safety nut NM 10	5	35	0910.72.01.00	shim 0,1mm thick as required	
17-19	1712.25.08.01	lever cpl.	2		0910.72.03.00	shim 0,3mm thick as required	
17	1712.25.08.02	lever	2		0910.72.05.00	shim 1,0mm thick as required	
18	0920.13.05.10	bush	2	36	1715.25.08.23	gauge	1
19	0934.96.01.00	chain tension sprocket	2				



AUTOMATIC CHAIN
LUBRICATION UNIT
optional equipment

1	0926.60.02.00	lubricating pump	1	16	0926.60.16.00	tubing	1
2	0955.91.02.00	nut	7	17*	0955.96.08.00	+cutting ring	1
3	0955.96.01.00	cutting ring	7	18	0926.60.19.00	polyamid tube	12m
4	0955.34.43.00	adjustable		19	0926.60.14.00	cover tube	1
		angle connection	1	20	0926.60.18.00	insert bush	14
5	0954.61.85.00	clamp	2	21	0972.64.01.00	cable clip	10
6	0901.20.70.00	hex. bolt M 8x30	2	22	0972.62.11.00	chassis clamp	4
7	0907.60.08.00	safety nut NM 8	2	23	0926.60.17.00	oil brush	7
8-13	0926.60.03.00	tank cpl.	1	24	0955.10.21.00	angle	
8	0926.60.04.00	tank	1		connection	6	
9	0926.60.05.00	sieve	1	25	0955.10.20.00	straight	
10	0926.60.06.00	cover	1		connection	1	
11	0926.60.07.00	outlet	1	26	0954.60.05.00	cable clip	7
12	0926.60.08.00	hex. nut M 8	1	27	0901.20.47.00	hex. bolt M 6x20	7
13	0926.60.09.00	seal	1		0907.10.06.00	hex. nut	7
14	0926.60.12.00	tube	1		0911.10.06.00	spring washer	7
15	0954.66.19.00	clip	2				

+ = only for subsequent fitting



1715-41

COATING

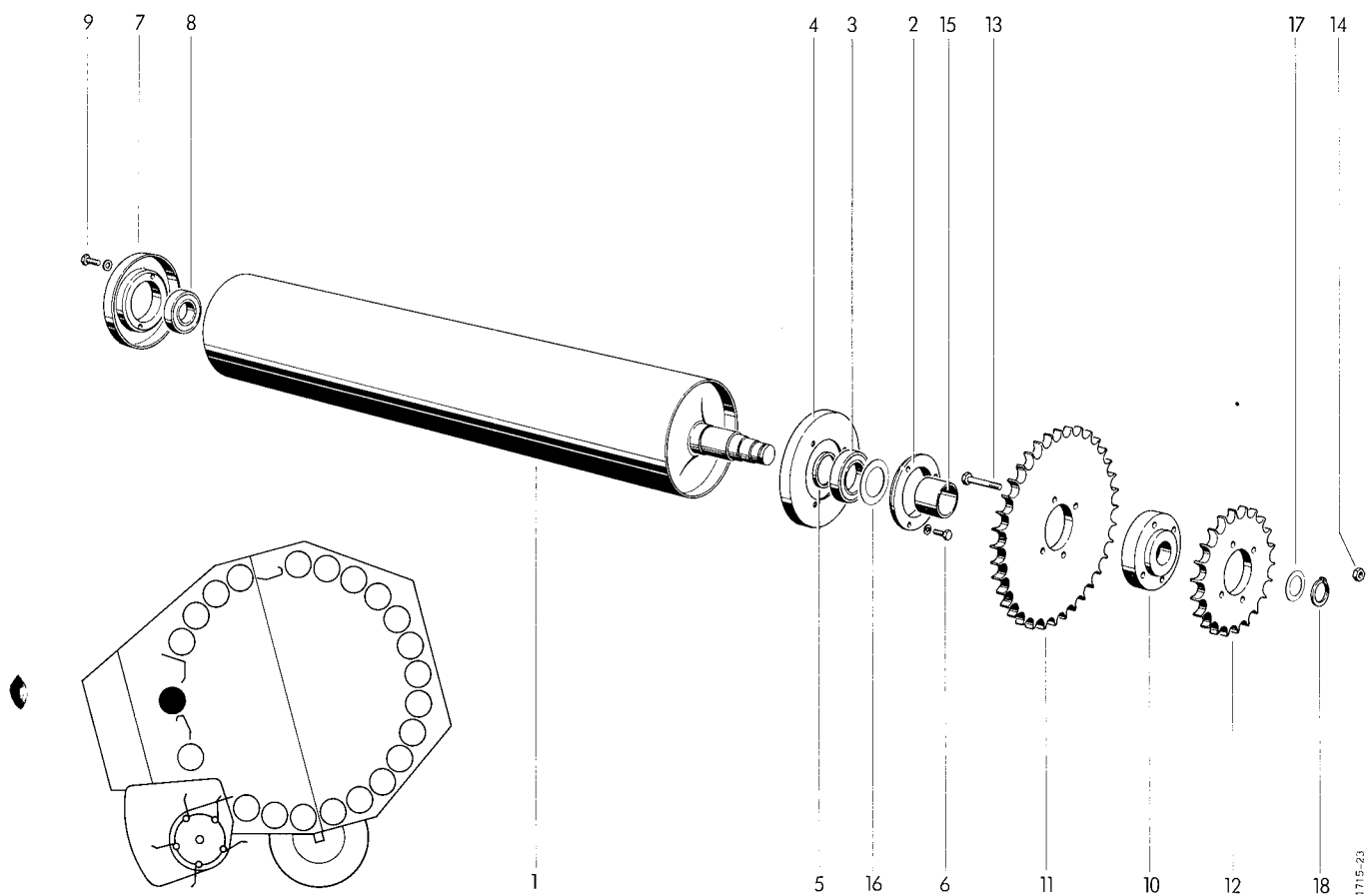
- 1 0948.20.02.00 +set of coating cpl.
for 4 roller

+ =re-coat signet roller only

● =for cross drive

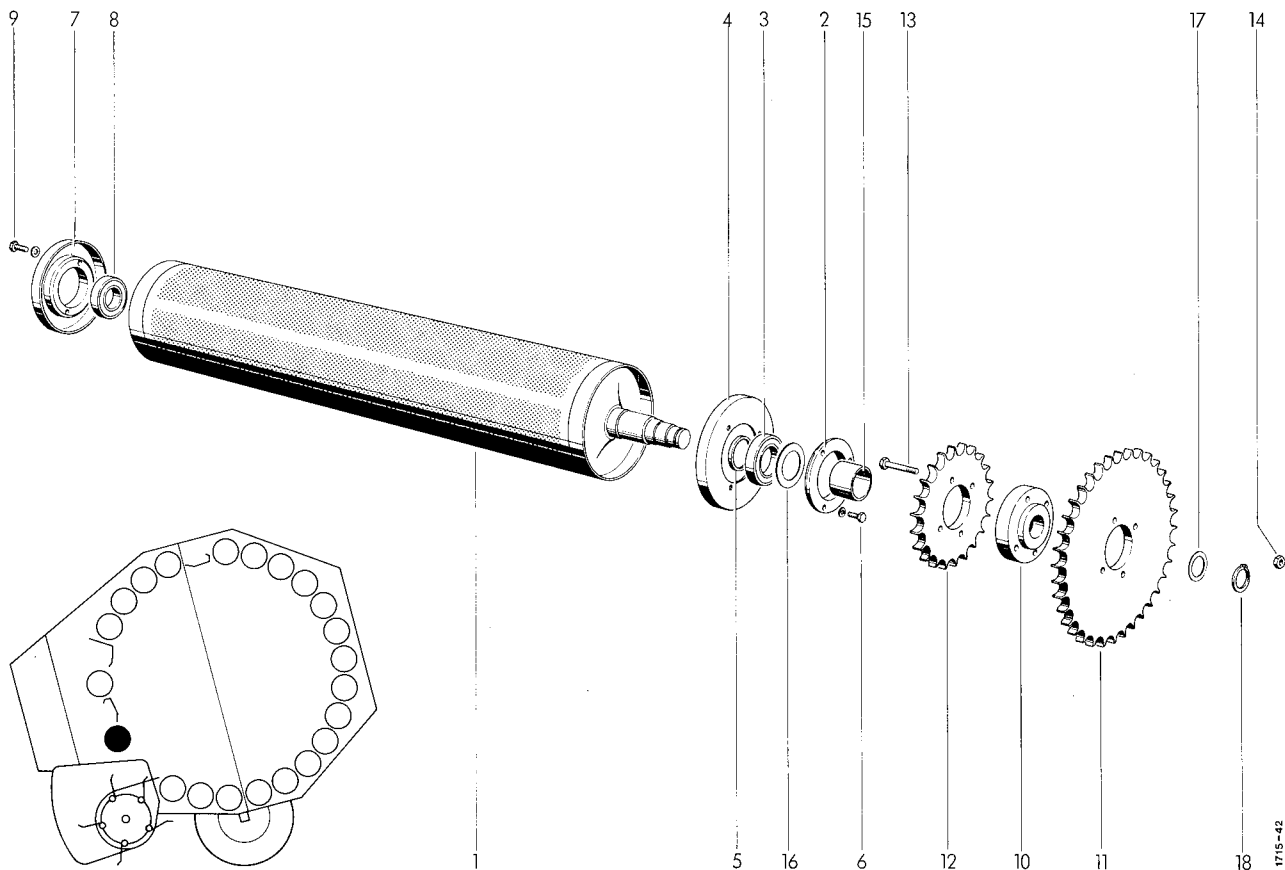
TOOLS WITH ACCESSORIES

- | | | | |
|------|---------------|-------------------|----|
| 2-5 | 0980.12.10.00 | toolbag cpl. | 1 |
| 1 2* | 0980.14.03.00 | toolbag | 1 |
| 3* | 0980.22.13.00 | double spanner | 1 |
| 4* | 0980.20.13.00 | spanner | 1 |
| 5* | 0980.22.17.00 | double spanner | 1 |
| 6* | 0926.94.10.00 | chain lubricant | 1 |
| 7* | 0994.10.31.00 | chock | 2 |
| 8* | 0901.10.78.00 | ●hex. bolt M 8x50 | 9 |
| 9* | 0907.10.08.00 | ●hex. nut M 8 | 18 |



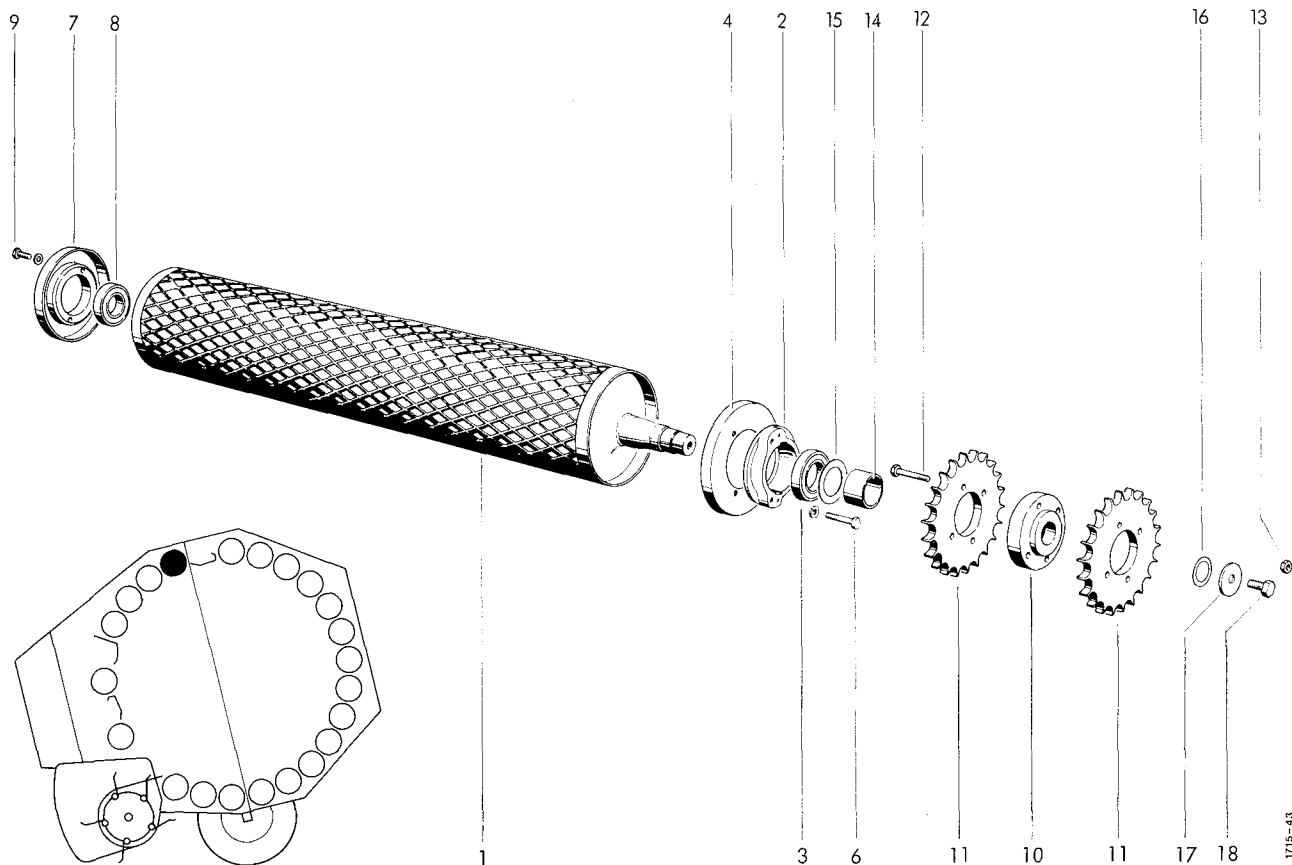
TOP MAIN DRIVE ROLLER

1	1712.14.01.01	roller	1	10	1705.14.02.10	hub	1
2+3	1712.14.02.01	flange bearing cpl.	1	11	0309.42.00.00	chain sprocket	1
2	0312.02.00.00	bearing ring	1	12	0309.23.00.00	chain sprocket	1
3	0922.12.95.00	ball bearing	1	13	0901.11.47.00	hex. bolt M 12x80	4
4	1712.14.02.05	sealing disc	1	14	0907.60.12.00	safety nut NM 12	4
5	0328.63.00.00	distance ring	1	15	1712.14.04.09	spacer bush	1
6	0901.20.68.00	hex. bolt M 8x25	3	16	0910.73.70.00	shim 0,1mm thick as required	
	0911.10.08.00	spring washer	3		0910.73.72.00	shim 0,3mm thick as required	
7	1712.14.03.01	bearing ring	1		0910.73.74.00	shim 1,0mm thick as required	
8	0922.12.87.00	ball bearing	1	17	0910.72.50.00	shim 0,1mm thick as required	
9	0901.21.10.00	hex. bolt M 10x30	2		0910.72.52.00	shim 0,3mm thick as required	
	0910.60.10.00	washer	2		0910.72.53.00	shim 0,5mm thick as required	
10-14	1712.14.04.01	chain sprocket cpl.	1	18	0912.10.30.00	circlip	1



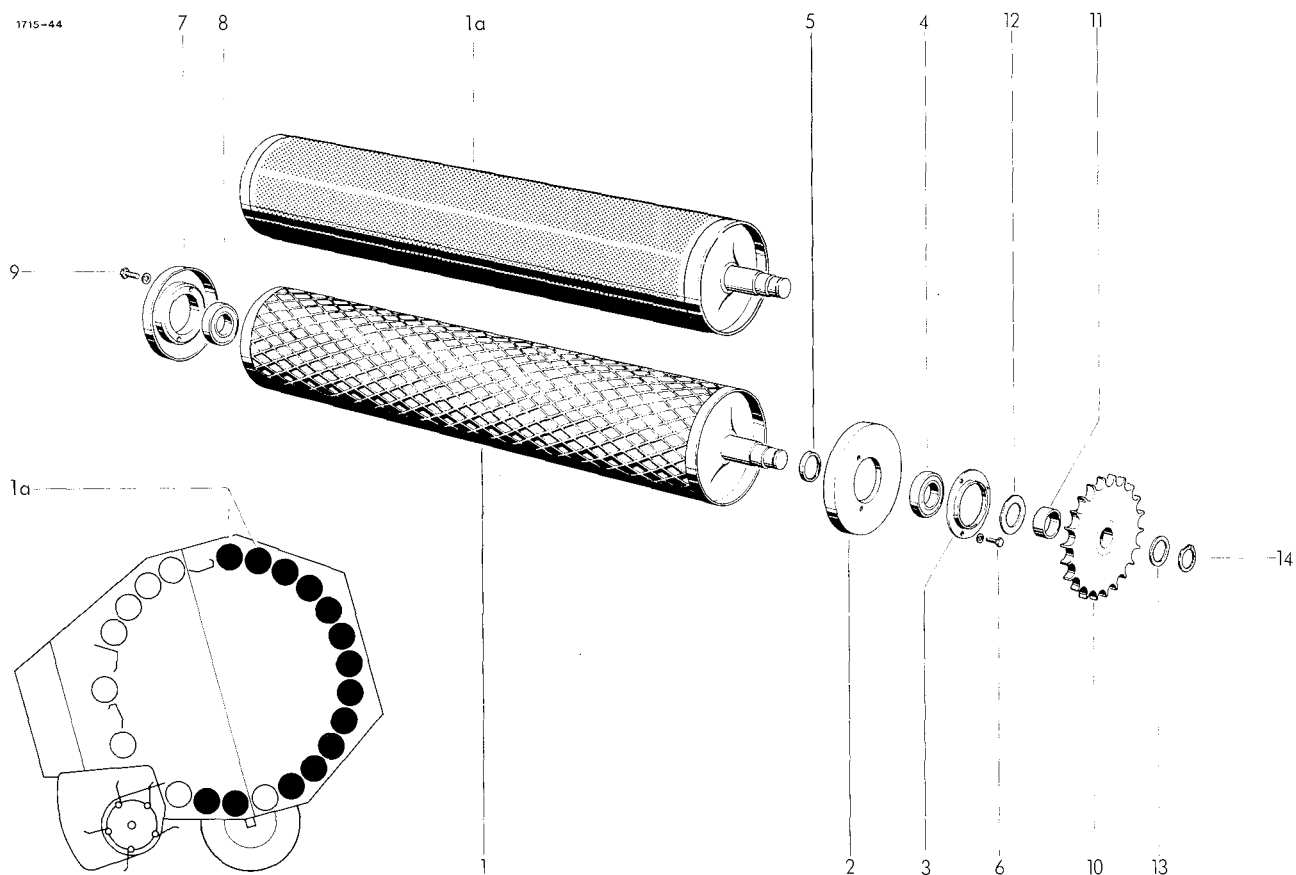
BOTTOM MAIN DRIVE ROLLER

1	1712.15.05.01	profil roller	1	10	1705.14.02.10	hub	1
1a*	1712.17.05.06	dimple sheet for No.1	2	11	0309.42.00.00	chain sprocket	1
2+3	1712.14.02.01	flange bearing cpl.	1	12	0309.23.00.00	chain sprocket	1
2	0312.02.00.00	bearing ring	1	13	0901.11.47.00	hex. bolt M 12x80	4
3	0922.12.95.00	ball bearing	1	14	0907.60.12.00	safety nut NM 12	4
4	1712.14.02.05	sealing disc	1	15	1712.14.04.09	spacer bush	1
5	0328.63.00.00	distance ring	1	16	0910.73.70.00	shim 0,1mm thick as required	
6	0901.20.68.00	hex. bolt M 8x25	3		0910.73.72.00	shim 0,3mm thick as required	
	0911.10.08.00	spring washer	3		0910.73.74.00	shim 1,0mm thick as required	
7	1712.14.03.01	bearing ring	1	17	0910.72.50.00	shim 0,1mm thick as required	
8	0922.12.87.00	ball bearing	1		0910.72.52.00	shim 0,3mm thick as required	
9	0901.21.10.00	hex. bolt M 10x30	2		0910.72.53.00	shim 0,5mm thick as required	
	0910.60.10.00	washer	2	18	0912.10.30.00	circlip	1
10-14	1712.15.04.01	chain sprocket cpl.	1				



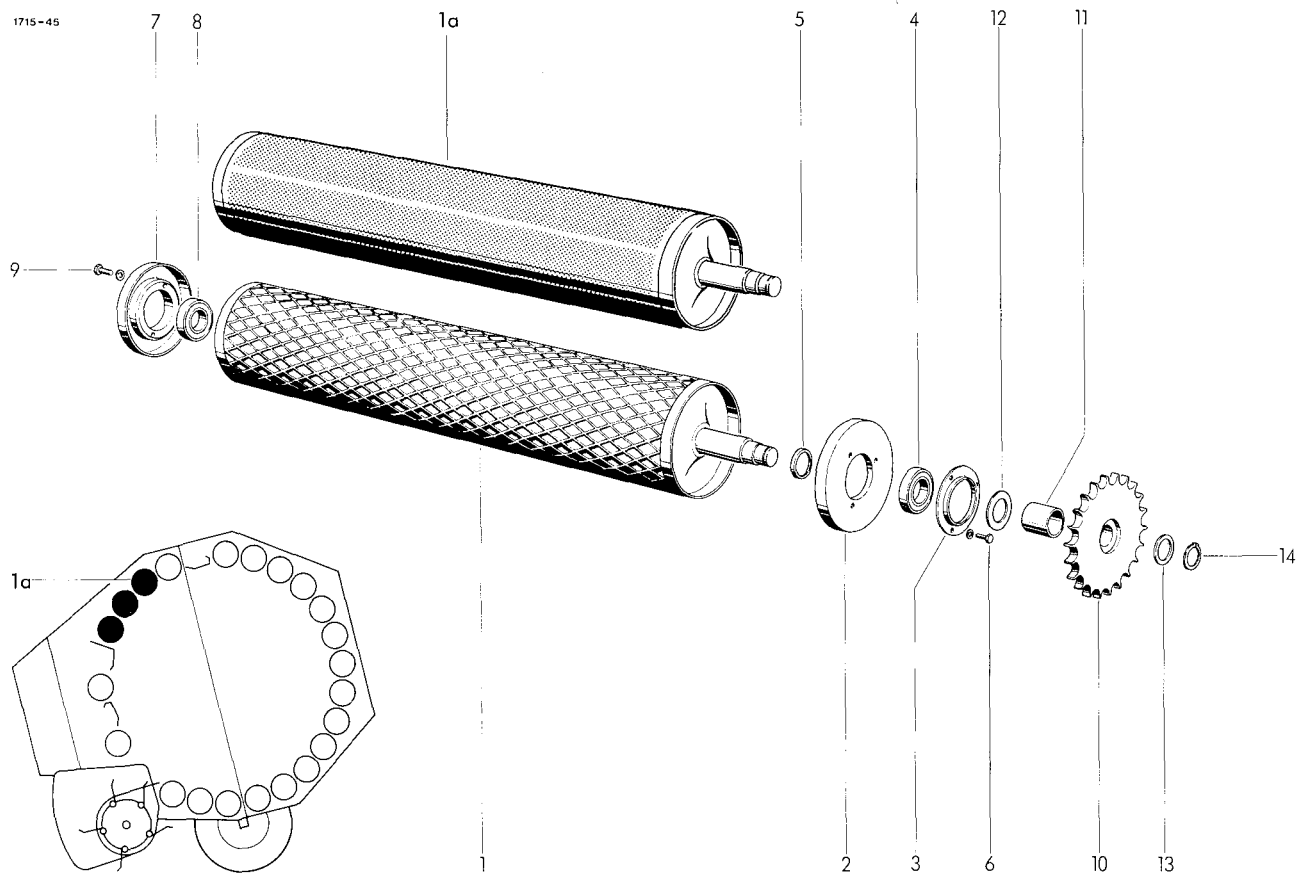
HINGED ROLLER

1	1712.16.06.01	segment roller	1	11	0309.23.00.00	chain sprocket	1
2+3	1712.16.02.01	flange bearing cpl.	1	12	0901.11.47.00	hex. bolt M 12x80	1
2	0712.29.00.00	bearing ring	1	13	0907.60.12.00	safety nut NM 12	4
3	0922.12.95.00	ball bearing	1	14	1712.16.04.09	spacer bush	1
4	1712.14.02.05	sealing ring	1	15	0910.73.70.00	shim 0,1mm thick as required	
6	0901.10.61.00	hex. bolt M 8x45	3		0910.73.72.00	shim 0,3mm thick as required	
	0911.10.08.00	spring washer	3		0910.73.74.00	shim 1,0mm thick as required	
7	1712.14.03.01	bearing ring	1	16	0910.72.50.00	shim 0,1mm thick as required	
8	0922.12.87.00	ball bearing	1		0910.72.52.00	shim 0,3mm thick as required	
9	0901.21.10.00	hex. bolt M 10x30	2		0910.72.53.00	shim 0,5mm thick as required	
	0910.60.10.00	washer	2	17	0910.89.81.00	spring washer	1
10-13	1712.16.04.01	chain sprocket cpl.	1	18	0901.30.85.00	hex. bolt M 12x20	1
10	1705.14.02.10	hub	1				



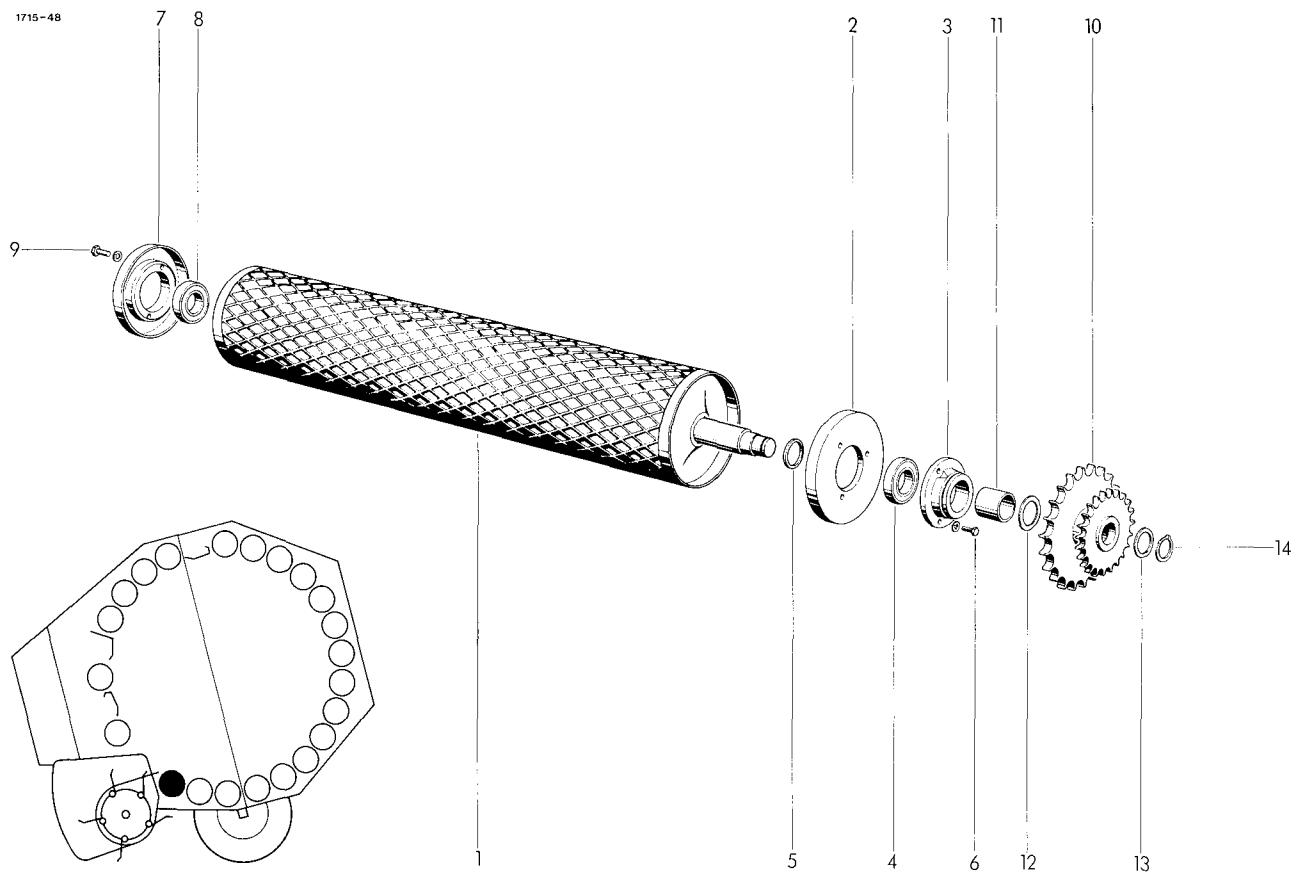
DRIVE ROLLER

1	1712.17.06.01	segment roller	12	9	0901.21.10.00	hex. bolt M 10x30	28
1a	1712.17.05.01	profil roller	2		0910.60.10.00	washer	28
1b*	1712.17.05.06	dimple sheet for No.1a	4	10	1712.17.04.01	chain sprocket	14
2	1712.17.02.01	bearing flange	14	11	0328.43.00.00	spacer bush	14
3	1712.17.02.05	bearing cover	14	12	0910.73.10.00	shim 0,1mm thick as required	
4	0922.12.88.00	ball bearing	14		0910.73.12.00	shim 0,3mm thick as required	
5	0328.48.00.00	thrust ring	14		0910.73.14.00	shim 1,0mm thick as required	
6	0901.20.66.00	hex. bolt M 8x20	42	13	0910.72.50.00	shim 0,1mm thick as required	
	0911.10.08.00	spring washer	42		0910.72.52.00	shim 0,3mm thick as required	
7	1712.14.03.01	bearing ring	14		0910.72.54.00	shim 0,5mm thick as required	
8	0922.12.87.00	ball bearing	14	14	0912.10.30.00	circlip	14



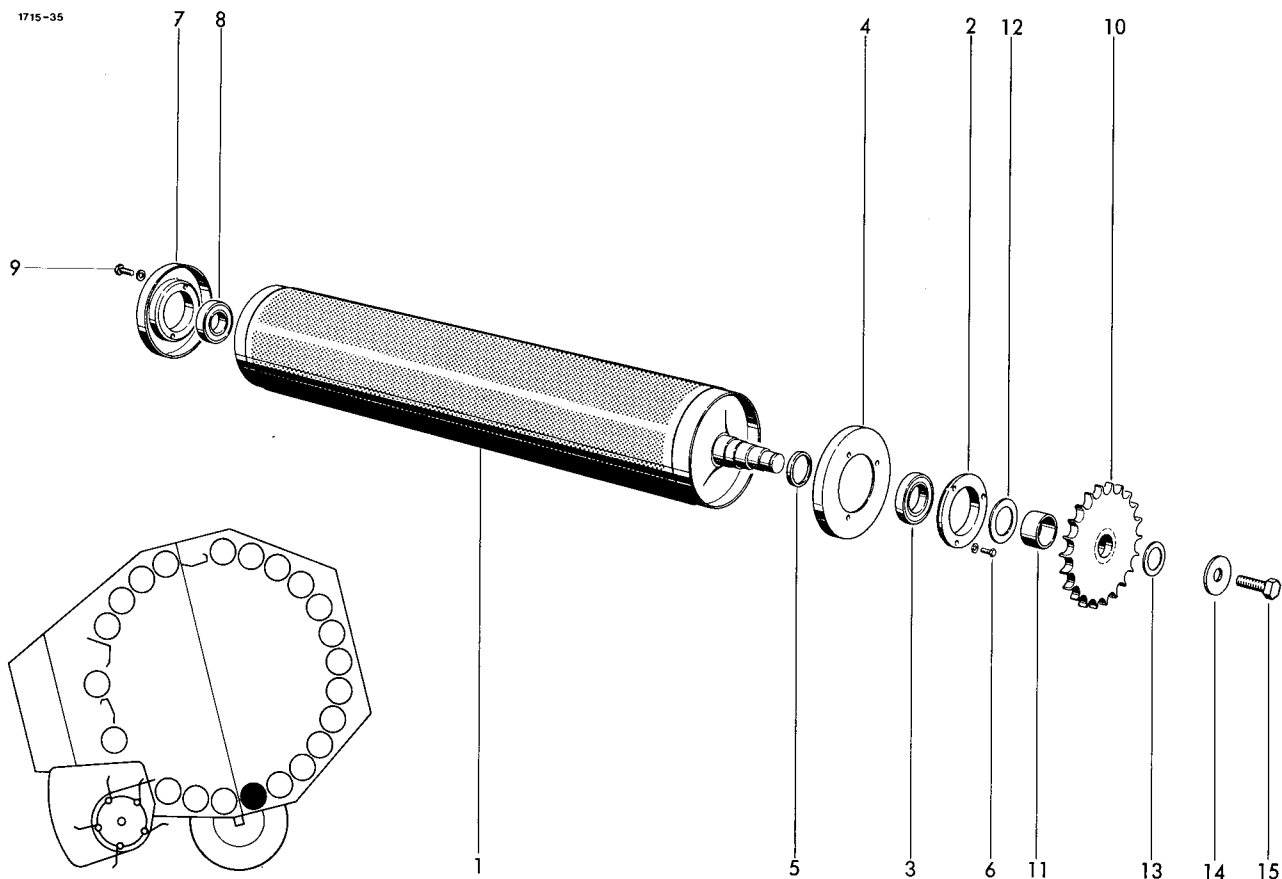
ROLLER

1	1712.18.06.01	segment roller	2	9	0901.21.10.00	hex. bolt M 10x30	6
1a	1712.19.05.01	profil roller	1		0910.60.10.00	washer	6
1b*	1712.17.05.06	dimple sheet for No.1	2	10	1712.18.04.01	chain sprocket	3
2	1712.17.02.01	bearing flange	3	11	1712.18.04.05	spacer bush	3
3	1712.17.02.05	bearing cover	3	12	0910.73.10.00	shim 0,1mm thick as required	
4	0922.12.88.00	ball bearing	3		0910.73.12.00	shim 0,3mm thick as required	
5	0328.48.00.00	thrust ring	3		0910.73.14.00	shim 1,0mm thick as required	
6	0901.20.66.00	hex. bolt M 8x20	9	13	0910.72.50.00	shim 0,1mm thick as required	
	0911.10.08.00	spring washer	9		0910.72.52.00	shim 0,3mm thick as required	
7	1712.14.03.01	bearing ring	3		0910.72.54.00	shim 0,5mm thick as required	
8	0922.12.87.00	ball bearing	3	14	0912.10.30.00	circlip	3



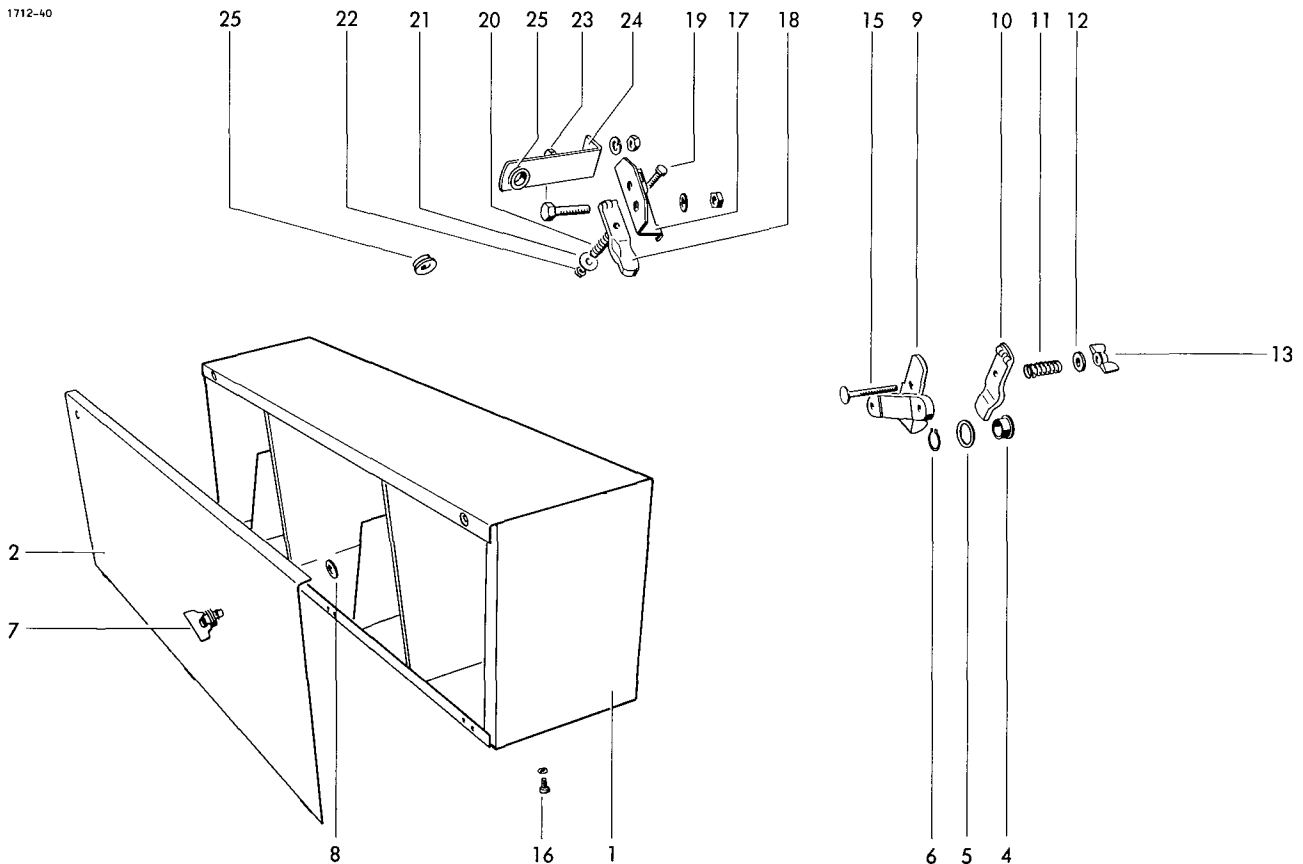
BOTTEM ROLLER

1	1712.18.06.01	segment roller	1	10	1712.19.04.01	chain sprocket	1
2	1712.17.02.01	bearing flange	1	11	1712.18.04.05	spacer bush	1
3	0712.30.00.00	bearing ring	1	12	0910.73.10.00	shim 0,1mm thick as required	
4	0922.12.88.00	ball bearing	1		0910.73.12.00	shim 0,3mm thick as required	
5	0328.48.00.00	thrust ring	1		0910.73.14.00	shim 1,0mm thick as required	
6	0901.20.70.00	hex. bolt M 8x30	3	13	0910.72.50.00	shim 0,1mm thick as required	
	0911.10.08.00	spring washer	3		0910.72.52.00	shim 0,3mm thick as required	
7	1712.14.03.01	bearing ring	1		0910.72.54.00	shim 0,5mm thick as required	
8	0922.12.87.00	ball bearing	1	14	0912.10.30.00	circlip	1
9	0901.21.10.00	hex. bolt M 10x30	2				
	0910.60.10.00	washer	2				



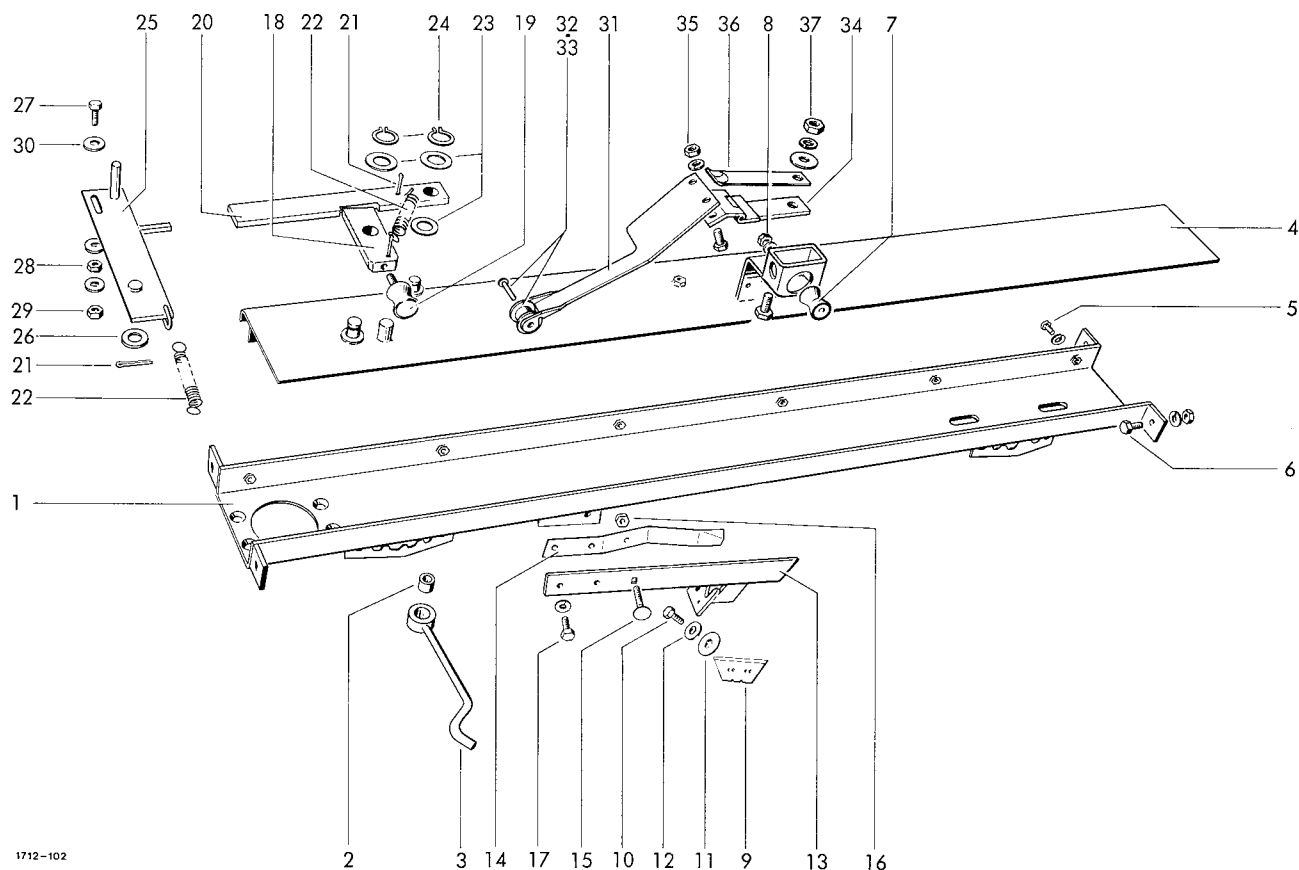
GUIDE ROLLER

1	1712.20.05.01	profil roller	1	10	1712.17.04.01	chain sprocket	1
1a*	1712.17.05.06	dimple sheet for No.1		11	1712.20.04.05	spacer bush	1
2+3	1712.14.02.01	bearing flange cpl.	1	12	0910.73.70.00	shim 0,1mm thick as required	
2	0312.02.00.00	bearing ring	1		0910.73.72.00	shim 0,3mm thick as required	
3	0922.12.95.00	ball bearing	1		0910.73.74.00	shim 1,0mm thick as required	
4	1712.14.02.05	sealing disc	1	13	0910.72.50.00	shim 0,1mm thick as required	
5	0328.63.00.00	distance ring	1		0910.72.52.00	shim 0,3mm thick as required	
6	0901.20.68.00	hex. bolt M 8x25	3		0910.72.54.00	shim 0,5mm thick as required	
	0911.10.08.00	spring washer	3	14	0910.89.81.00	spring washer	1
7	1712.14.03.01	bearing ring	1	15	0901.30.85.00	hex. bolt M 12x20	1
8	0922.12.87.00	ball bearing	1				
9	0901.21.10.00	hex. bolt M 10x30	2				
	0910.60.10.00	washer	2				



TWINE BOX

1	1712.27.01.01	box	1	16	0901.20.66.00	hex. bolt M 8x25	6
2	1712.27.01.12	cover	1		0907.10.08.00	hex. nut	6
3*	0902.50.44.00	countersunk bolt for No.2			0910.10.08.00	washer	6
		M 6x16	6		0911.10.08.00	spring washer	6
	0907.10.06.00	hex.nut	6				
	0910.10.06.00	washer	6				
	0911.10.06.00	spring washer	6				
4	0361.08.00.00	twine guide eye	1	17-22	1712.34.07.01	twine tensioner cpl.	1
5	0910.80.92.00	washer	1	17	1712.34.07.02	tension plate	1
6	0912.10.20.00	circlip	1	18	0761.03.00.00	twine tensioner, top part	1
7	0919.48.94.00	cover lock	2	19	0901.20.54.00	hex. bolt M 6x45	1
8	0919.48.92.00	holding washer	2	20	0940.10.71.00	tension spring	1
9	0761.02.00.00	twine tensioner, bottom part	1	21	0910.40.06.00	washer	1
10	0761.03.00.00	twine tensioner, top part	1	22	0907.60.06.00	safety nut NM 6	1
11	0940.10.71.00	tension spring	1	23	0901.21.06.00	hex. bolt M 10x20	3
12	0910.15.06.00	washer	1		0907.10.10.00	hex. nut	3
13	0908.31.06.00	wing nut M 6	1		0911.10.10.00	spring washer	3
14*	0902.24.67.00	cheese head bolt for No.9	24		1712.34.07.12	guide arm	1
		M 6x20	2	25	0361.08.00.00	twine guide eye	2
	0907.10.06.00	hex.nut	2	26*	0912.10.20.00	circlip for No 25	2
	0910.15.06.00	washer	2				
	0911.10.06.00	spring washer	2				
15	0903.10.26.00	cup head bolt M 6x70	1				



HOUSING FOR TYING UNIT

1	1712.34.01.01	beam
2+3	1712.34.01.15	range spacer
2	0920.39.90.00	torsion roller
3	1712.34.01.17	hook
4	1712.34.01.20	cover shield
5	0901.20.66.00	hex. bolt M 8x20
	0911.10.08.00	spring washer
6	0901.21.08.00	hex. bolt M 10x25
	0907.10.10.00	hex. nut
	0911.10.10.00	spring washer
7	0924.53.60.00	guide roller
8	0907.10.06.00	hex. nut M 6
	0911.10.06.00	spring washer

CUTTING UNIT

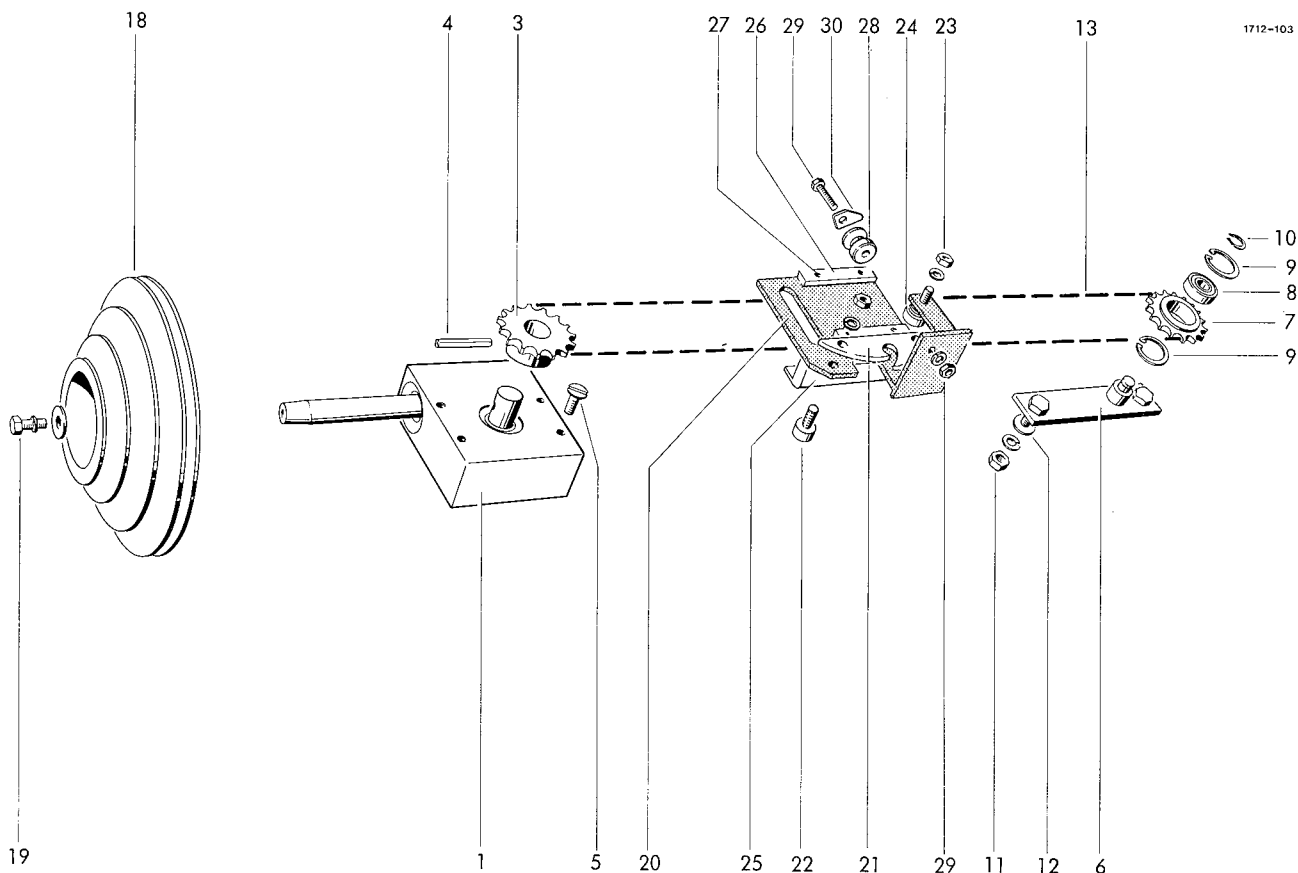
9	0982.40.01.00	knife
10	0901.20.42.00	hex. bolt M 6x10
11	0940.88.06.00	plate spring
12	0910.10.06.00	washer
13	1712.34.04.21	lever
14	0940.65.37.00	plate spring
15	0903.10.18.00	cup head bolt M 6x30
16	0907.56.06.00	safety nut M 6
17	0901.20.66.00	hex. bolt M 8x20
	0911.10.08.00	spring washer

TRIPPING MECHANISM

1	18	1712.34.05.02	trip lever	1
2	19	0924.53.60.00	guide roller	1
2	20	1712.34.05.05	stop lever	1
2	21	0916.10.95.00	split pin	3
1	22	0940.20.48.00	tension spring	2
6	23	0910.10.13.00	washer	3
6	24	0912.10.12.00	circlip	2
4	25	1712.34.05.10	tripping plate	1
4	26	0910.15.14.00	washer	1
4	27	0901.20.70.00	hex. bolt M 8x30	1
1	28	0907.10.08.00	hex. nut M 8	1
1	29	0907.56.08.00	hex. nut M 8	1
1	30	0910.10.08.00	washer	3

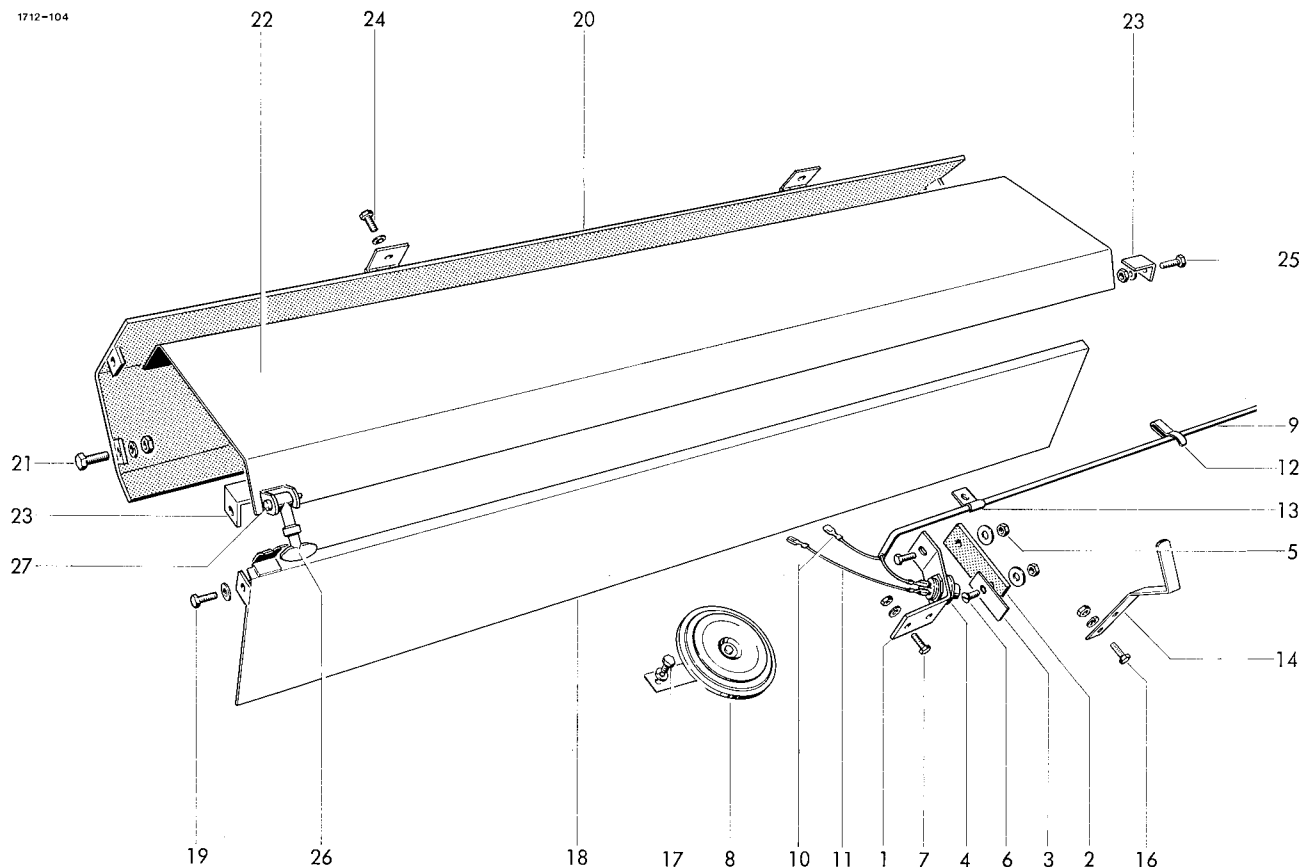
TWINE THROWER

1	31	1712.34.09.01	thrower	1
1	32	0936.99.81.00	roller	1
1	33	0914015.54.00	rivet	1
1	34	1712.34.09.05	hinge	1
1	35	0901.20.43.00	hex. bolt M 6x12	2
		0907.10.06.00	hex. nut	2
		0911.10.06.00	spring washer	2
1	36	0940.64.92.00	plate spring	1
2	37	0901.20.66.00	hex. bolt M 8x12	1
		0907.10.08.00	hex. nut	1
		0910.80.18.00	washer	1



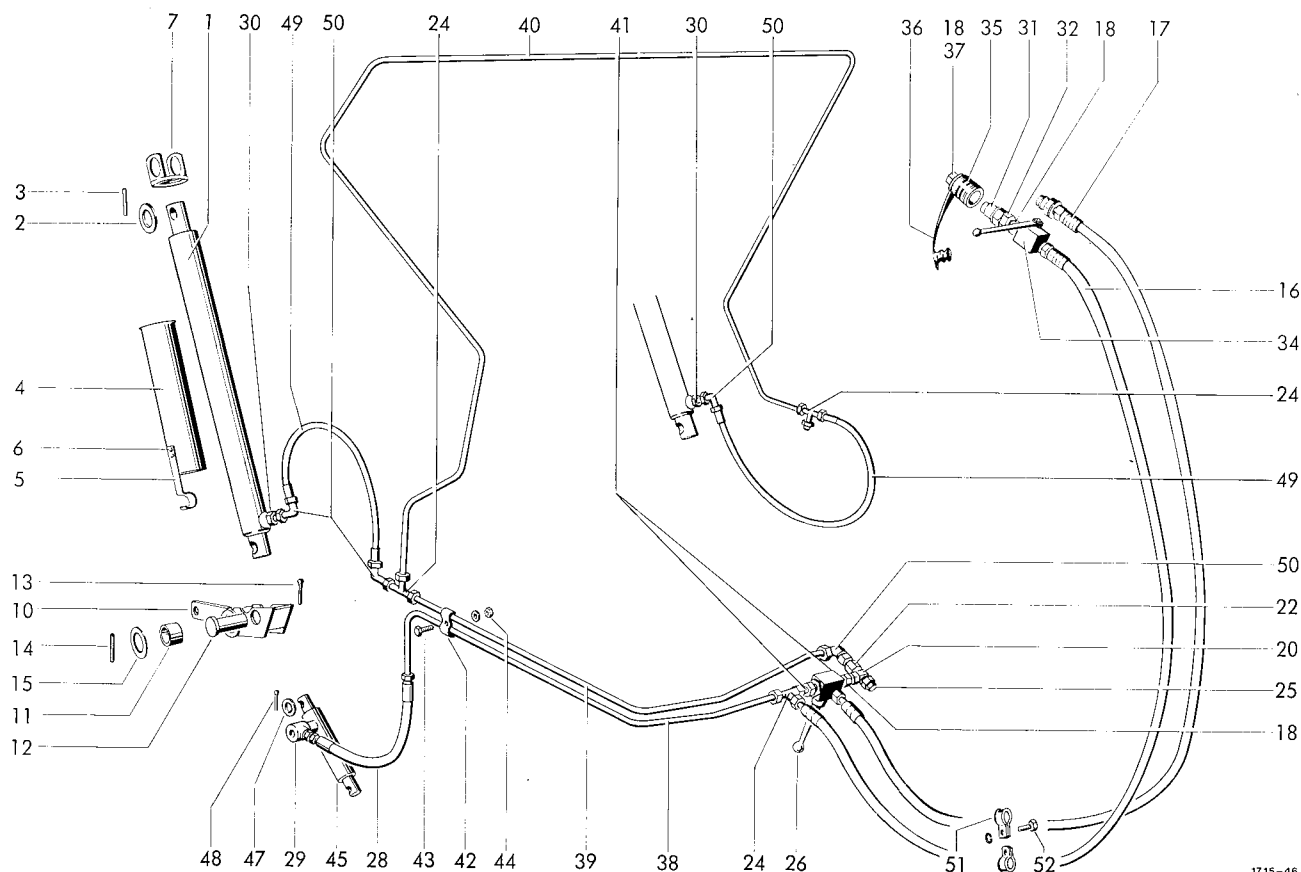
DRIVE

1	0928.30.01.00	gear box with No 2	1	19	0901.20.68.00	hex. bolt M 8x25	1
2*	0926.76.11.00	breather for No 1	1		0910.40.09.00	washer	1
3	0308.26.00.00	chain sprocket	1		0911.10.08.00	spring washer	1
4	0915.51.58.00	expanding pin	1				
5	0902.50.65.00	countersunk bolt M 8x20	4			SLIDING CARRIAGE	
6	1712.34.02.17	tension block	1				
7-9	1712.34.02.21	chain sprocket cpl.	1	20	1712.34.03.01	base plate	1
7	0309.47.00.00	chain sprocket	1	21	1712.34.03.07	impacter plate	1
8	0922.12.51.00	ball bearing	1	22	0924.51.18.00	roller	3
9	0912.15.32.00	circlip	2	23	0907.10.08.00	hex. nut M 8	3
10	0912.10.12.00	circlip	1		0911.10.08.00	spring washer	3
11	0907.10.10.00	hex. nut M 10	2	24	0910.10.08.00	washer	3
	0911.10.10.00	spring washer	2	25	1712.34.03.17	guide piece	1
12	0328.33.00.00	safety washer	2	26	1712.34.03.14	support plate	2
13	0934.15.80.00	roller chain	1	27	0915.40.32.00	ribbed nail	4
14*	0934.60.27.00	inner link	1	28	1712.34.03.20	roller	1
15*	0934.61.07.00	inner link	1	29	0901.10.22.00	hex. bolt	1
16*	0934.60.87.00	cranked link for No.13	1		0907.10.06.00	hex. nut M 6x50	1
17*	0934.15.81.00	connecting link with roller	1		0911.10.06.00	spring washer	1
18	0936.99.80.00	stepped pulley	1	30	1712.34.03.23	stop	1



SIGNALING DEVICE

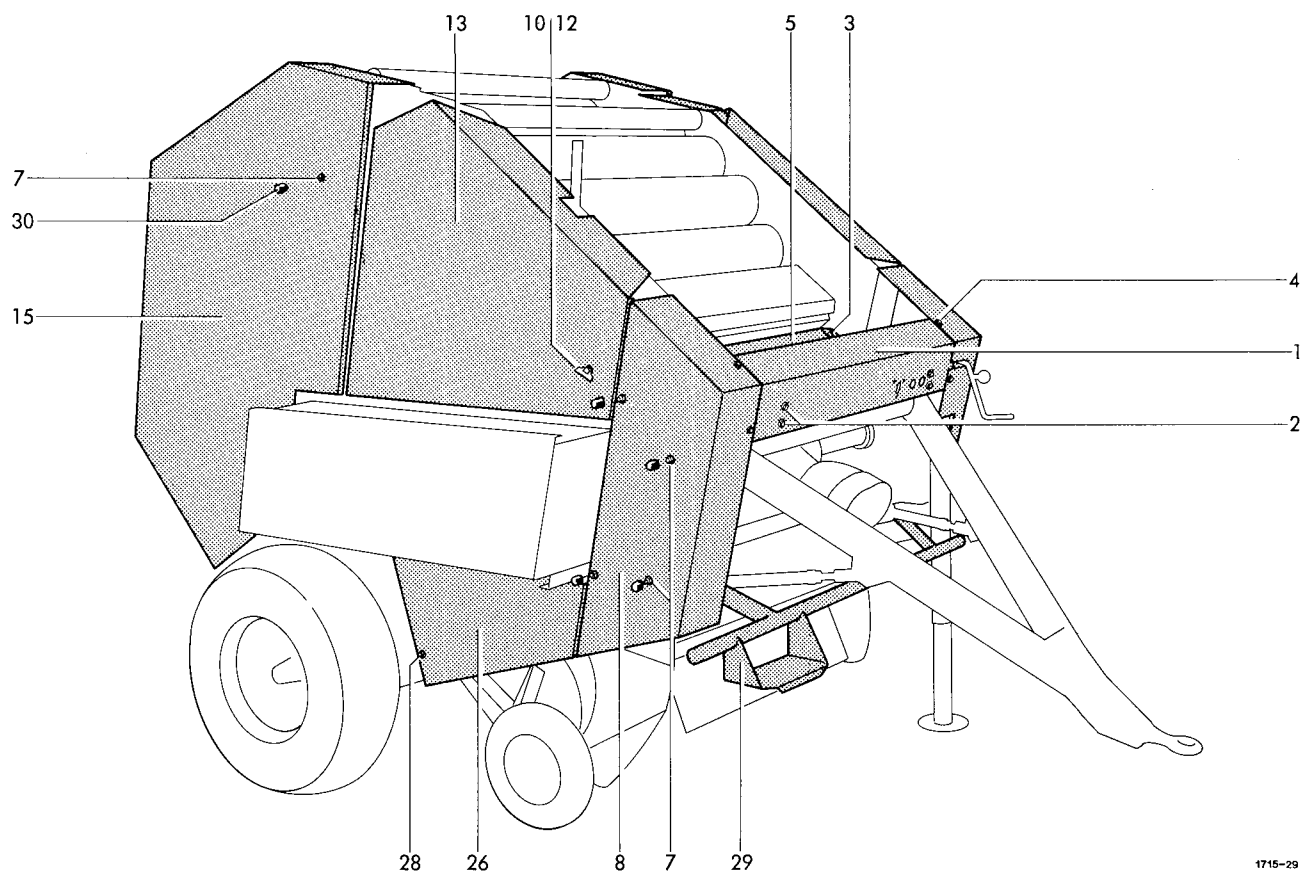
1-6	1712.34.06.01	switch cpl.	1	17	0901.20.61.00	hex. bolt M 8x10	2
1	1712.34.06.02	holder	1		0911.10.08.00	spring washer	2
2	1712.34.06.03	link	1			GUARDS	
4	0971.34.01.00	pressure switch	1				
5	0901.20.45.00	hex. bolt M 6x16	1				
	0907.10.06.00	hex. nut	1	18	1712.34.08.01	guide shield	1
	0910.40.06.00	washer	1	19	0901.20.66.00	hex. bolt M 8x20	2
6	0902.50.44.00	countersunk bolt M 6x16	1		0907.10.08.00	hex. nut	2
	0907.10.06.00	hex. nut	1		0911.10.08.00	spring washer	2
	0910.40.06.00	washer	1		0910.40.09.00	washer	2
7	0901.20.45.00	hex. bolt M 6x16	1	20	1712.34.08.08	cover shield	1
	0907.10.06.00	hex. nut	1	21	0901.21.08.00	hex. bolt M 10x25	4
	0911.10.06.00	spring washer	1		0907.10.10.00	hex. nut	4
8	0971.26.80.00	signal horn	1		0911.10.10.00	spring washer	4
9	0972.19.05.00	crank with No.10	1	22	1712.34.08.26	cover	1
10	0972.38.81.00	connector	1	23	1712.34.08.16	stop	2
11	0972.10.01.00	cable cpl. with No.10	2	24	0901.20.64.00	hex. bolt M 8x16	2
12	0972.62.11.00	chassis clamp	2		0907.10.08.00	hex. nut	2
13	0938.50.08.00	cable clip	2		0910.80.18.00	washer	2
14	1712.34.06.29	angle	1		0911.10.08.00	spring washer	2
16	0901.20.42.00	hex. bolt M 6x10	1	25	0901.21.06.00	hex. bolt M 10x20	1
	0907.10.06.00	hex. nut	4		0907.10.10.00	hex. nut	1
	0911.10.06.00	spring washer	1		0911.10.10.00	spring washer	1
			26		0938.20.40.00	cover lock	1
			27		0918.20.04.00	pin with washer a. split pin	1



1715-46

HYDRAULIC SYSTEM

1	0951.11.41.00	hydr. cylnder	2	29	0955.31.16.00	choke-free	
2	0910.15.30.00	washer	3			banjo coupling	1
3	0915.51.59.00	expanding pin	3	30	0955.60.33.00	straight connection	2
4-6	1712.46.02.01	support cpl.	2	31	0954.31.22.00	coupling plug	1
4	1712.46.02.02	support	2	32	0955.60.43.00	straight connection	
5	0940.64.74.00	plate spring	2			with shaft	1
6	0914.15.47.00	rivet	4	33*	0954.31.80.00	orifice washer for No.29	1
7	1712.46.02.10	support bearing	2	34	0952.13.03.00	ball valve	1
10+11	1712.46.03.01	tipping bearing cpl.	1	35	0954.31.01.00	coupling sleeve	2
10	1712.46.03.02	whip	1	36	0954.32.10.00	dust plug	2
11	0920.15.34.00	bush	2	37	5633.13.09.06	plate	2
12	0917.52.65.00	pin	1	38	1715.46.04.31	tubing	1
13	0916.11.36.00	split pin	1	39	1715.46.04.32	tubing	1
14	0915.51.87.00	expanding pin	1	40	1715.46.04.33	tubing	1
15	0910.81.86.00	washer	1	41	1715.46.04.34	tubing	2
16	0954.12.66.00	high pressure hose	2	42	0954.60.40.00	clamp	2
17	0954.31.20.00	coupling plug	1	43	0901.20.47.00	hex. bolt M 6x20	1
18	0955.91.10.00	nut	6		0910.15.06.00	washer	1
19*	0955.96.08.00	cutting ring for No.18	4	44	0907.80.06.00	safety nut M 6	1
20	0955.30.41.00	banjo coupling	1	45	0951.11.19.00	hydr. cylinder	1
21*	0925.40.19.00	seal for No 20	1	46*	0951.51.19.00	set of seals for No.45	1
22	0955.42.04.00	straight		47	0910.10.17.00	washer	1
		connection	1	48	0916.10.99.00	split pin	1
24	0955.16.67.00	t-connection	3	49	0954.12.17.00	high pressure hose	2
25	0952.26.01.00	non return valve	1	50	0955.34.04.00	adjustable	
26	0952.13.60.00	ball valve	1			angle connection	4
27*	0901.20.66.00	hex. bolt for No.26 M 8x20	2	51	0954.62.43.00	norma-clamp	2
	0911.10.08.00	spring washer	2	52	0901.20.47.00	hex. bolt M 6x20	1
28	0954.12.06.00	high pressure hose	1		0911.10.06.00	spring washer	1

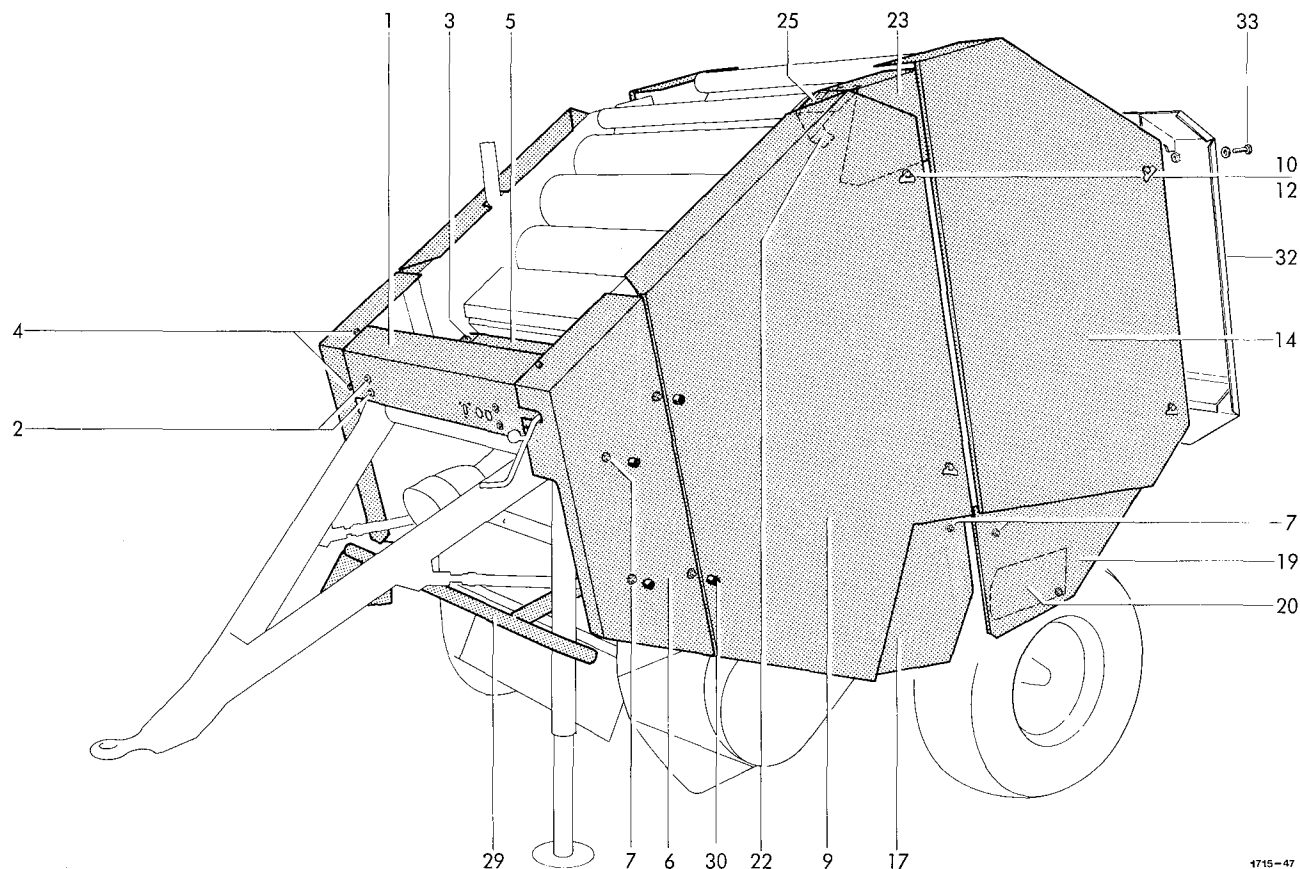


1715-29

GUARDS

1	1715.51.01.01	shield	1	7	0907.10.12.00	hex. nut M 12	15
2	0901.20.64.00	hex. bolt M 8x16	4		0910.10.13.00	washer	15
	0907.10.08.00	hex. nut	4	8	1715.51.03.01	front guard, right	1
	0910.40.08.00	washer	4	9	1715.51.04.01	guard	1
	0911.10.08.00	spring washer	4	10	0919.48.95.00	cover lock hinged	5
3	0901.20.66.00	hex. bolt M 8x20	4	11*	0936.73.50.00	pvc-steel rope for No.9+14	2
	0907.10.08.00	hex. nut	4	12	0919.48.92.00	holding washer	5
	0910.40.08.00	washer	4	13	1715.51.05.01	side cover, right	1
	0911.10.08.00	spring washer	4	14	1715.51.06.01	rear guard, left	1
4	0901.20.64.00	hex. bolt M 8x16	4	15	1715.51.07.01	rear guard, right	1
	0907.10.08.00	hex. nut	4	16*	0905.19.11.00	tapping screw	
	0910.40.08.00	washer	8		0910.40.06.00	for No.15+19 M 6x15	7
5	1715.51.01.10	guard	1			washer	7
6	1715.51.02.01	front guard, left	1				

Continuation K 11

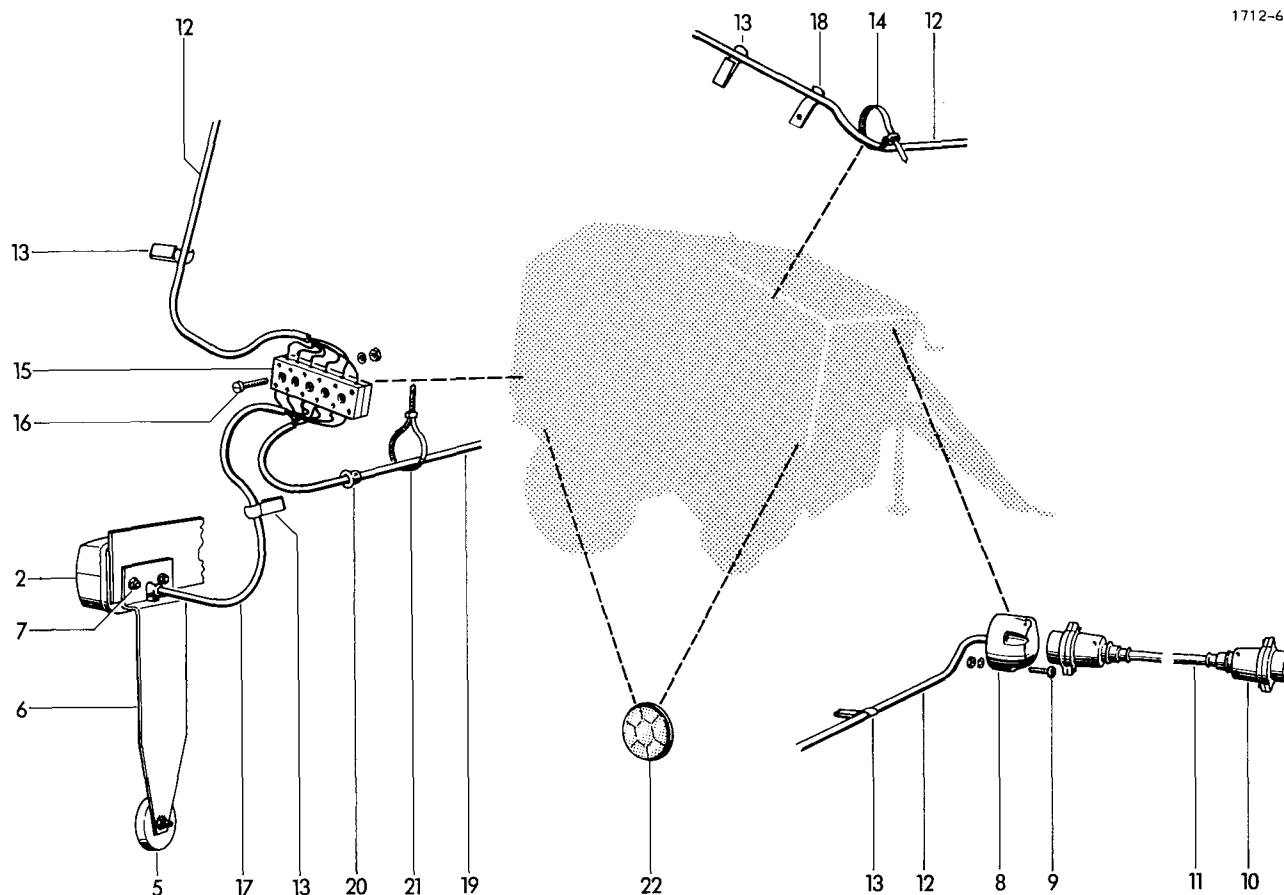


1715-47

17	1712.51.08.01	guard	1	28	0907.10.08.00	hex. nut M 8	1
19	1715.51.09.01	guard	1		0910.10.08.00	washer	1
20	1715.51.09.08	chain cover	1		0911.10.08.00	spring washer	1
21*	0901.20.42.00	hex. bolt for No.20 M 6x10	2	29	1712.51.12.01	front guard	1
	0911.10.06.00	spring washer	2	30	0938.90.64.00	hex.cover	10
22	1715.51.10.07	holder	1	31*	0901.20.68.00	hex. bolt M 8x25	2
23	1715.51.10.14	guard	1		0907.10.08.00	hex. nut	2
24*	0901.20.64.00	hex. bolt M 8x16	2		0910.40.09.00	washer	4
	0911.10.08.00	spring washer	2	32	1715.51.13.01	●guard	1
25	1715.51.10.25	guard	1	33	0901.20.71.00	●hex. bolt M 8x35	2
26	1715.51.11.01	guard	1		0910.10.08.00	●washer	2
27*	0901.20.66.00	hex. bolt for No.26 M 8x20	3				
	0907.10.08.00	hex. nut	3				
	0910.10.08.00	washer	6				
	0911.10.08.00	spring washer	3				

● = not for Southafrica and Ireland

see also K 10



LIGHTING SYSTEM

1*	0974.10.01.00	light	1	11	0972.16.36.00	cable	1
2	0974.10.02.00	light	1	12	0972.16.68.00	cable	1
3*	0974.20.38.00	bolb for No.1+2	4	13	0972.62.11.00	chassis clamp	19
4*	0974.20.07.00	bolb for No.1+2	2	14	0972.64.02.00	cable clip	1
5	0974.42.01.00	reflector	2	15	0972.51.36.00	connector	1
6	1121.63.01.07	angle	2	16	0902.24.31.00	cheese head bolt M 4x25	2
7	0902.24.45.00	cheese head bolt M 5x16	4		0907.10.04.00	hex. nut	2
	0907.10.05.00	hex. nut	4		0911.10.04.00	spring washer	2
	0911.10.05.00	spring washer	4	17	0972.14.10.00	cable	1
8	0974.46.01.00	socket	1	18	0938.50.08.00	cable clip	1
9	0902.24.52.00	cheese head bolt M 5x35	3	19	0972.14.44.00	cable	1
	0907.10.05.00	hex. nut	3	20	0972.60.01.00	guide	2
	0911.10.05.00	spring washer	3	21	0972.64.03.00	cable clip	5
10+11	0972.16.86.00	connector cable	1	22	0974.46.01.00	reflector	4
10	0972.46.02.00	plug	2				

Part No.	Page No.	Part No.	Page No.	Part No.	Page No.	Part No.	Page No.
0307.66.00.00	D20 12	0901.20.45.00	H40 7	0901.21.49.00	D20 25	0907.10.06.00	H40 16
0307.67.00.00	D20 4	0901.20.47.00	B10 7a*	0901.21.50.00	B30 17	0907.10.06.00	H40 5
0307.96.00.00	D20 12	0901.20.47.00	E20 27	0901.21.50.00	C20 6	0907.10.06.00	H40 6
0307.97.00.00	D20 4	0901.20.47.00	J10 43	0901.21.53.00	B40 14	0907.10.06.00	H40 7
0308.26.00.00	H30 3	0901.20.47.00	J10 52	0901.21.53.00	B40 17	0907.10.08.00	B30 14
0309.23.00.00	G10 12	0901.20.54.00	H10 19	0901.21.53.00	C40 9	0907.10.08.00	B40 34
0309.23.00.00	G20 12	0901.20.61.00	H40 17	0901.22.50.00	A10 12	0907.10.08.00	B40 3
0309.23.00.00	G30 11	0901.20.64.00	H40 24	0901.23.50.00	B20 7	0907.10.08.00	B50 12
0309.42.00.00	G10 11	0901.20.64.00	K10 2	0901.30.65.00	D30 7	0907.10.08.00	C30 12
0309.42.00.00	G20 11	0901.20.64.00	K10 4	0901.30.85.00	G30 18	0907.10.08.00	D30 16
0309.47.00.00	H30 7	0901.20.64.00	K11 24*	0901.30.85.00	G70 15	0907.10.08.00	F10 9
0309.52.00.00	C10 3	0901.20.66.00	C10 4	0901.30.88.00	D30 14	0907.10.08.00	H10 16
0309.56.00.00	E10 8	0901.20.66.00	C20 4	0901.80.46.00	C20 9	0907.10.08.00	H20 28
0312.02.00.00	G10 2	0901.20.66.00	D20 28	0902.10.70.00	B20 14	0907.10.08.00	H20 28
0312.02.00.00	G20 2	0901.20.66.00	D30 20	0902.11.09.00	D20 2	0907.10.08.00	H40 19
0312.02.00.00	G70 2	0901.20.66.00	G40 6	0902.24.24.00	B40 49	0907.10.08.00	H40 24
0328.33.00.00	H30 12	0901.20.66.00	G50 6	0902.24.31.00	K20 16	0907.10.08.00	K10 2
0328.43.00.00	G40 11	0901.20.66.00	H10 16	0902.24.45.00	K20 7	0907.10.08.00	K10 3
0328.48.00.00	G40 5	0901.20.66.00	H20 5	0902.24.52.00	K20 9	0907.10.08.00	K10 4
0328.48.00.00	G50 5	0901.20.66.00	H20 17	0902.24.67.00	H10 14*	0907.10.08.00	K11 27
0328.48.00.00	G60 5	0901.20.66.00	H20 37	0902.50.44.00	H10 3*	0907.10.08.00	K11 28
0328.63.00.00	G10 5	0901.20.66.00	H40 19	0902.50.44.00	H40 6	0907.10.08.00	K11 31
0328.63.00.00	G20 5	0901.20.66.00	J10 27*	0902.50.65.00	H30 5	0907.10.10.00	B10 10
0328.63.00.00	G70 5	0901.20.66.00	K10 3	0903.10.17.00	C30 29	0907.10.10.00	B10 11
0331.85.00.00	B20 2	0901.20.66.00	K11 27*	0903.10.18.00	C30 28	0907.10.10.00	B10 13
0336.59.00.00	D30 3	0901.20.68.00	B40 3	0903.10.18.00	H20 15	0907.10.10.00	B10 14
0338.30.00.00	C20 15	0901.20.68.00	G10 6	0903.10.26.00	H10 15	0907.10.10.00	B10 17
0361.08.00.00	H10 4	0901.20.68.00	G20 6	0903.10.40.00	C30 12	0907.10.10.00	B10 21
0361.08.00.00	H10 25	0901.20.68.00	G70 6	0903.10.70.00	B10 24	0907.10.10.00	B10 24
0712.29.00.00	G30 2	0901.20.68.00	H30 19	0903.10.70.00	C30 32	0907.10.10.00	B10 25
0712.30.00.00	G60 3	0901.20.68.00	K11 31*	0903.10.71.00	B10 21	0907.10.10.00	B10 27
0726.15.00.00	B40 33	0901.20.70.00	E20 6	0903.10.71.00	C20 23	0907.10.10.00	B40 45
0761.02.00.00	H10 9	0901.20.70.00	G60 6	0903.10.72.00	B50 13	0907.10.10.00	B50 13
0761.03.00.00	H10 10	0901.20.70.00	H20 27	0903.10.81.00	E10 15	0907.10.10.00	C10 7
0761.03.00.00	H10 18	0901.20.71.00	K11 33	0903.10.96.00	C10 14	0907.10.10.00	C20 17
0901.10.22.00	H30 29	0901.21.06.00	B10 25	0903.39.13.00	B50 8	0907.10.10.00	C20 23
0901.10.61.00	G30 6	0901.21.06.00	B40 45	0903.80.11.00	D20 20	0907.10.10.00	C30 32
0901.10.78.00	D30 16	0901.21.06.00	H10 23	0904.70.51.00	C10 6	0907.10.10.00	D30 2
0901.10.78.00	F10 8*	0901.21.06.00	H40 25	0904.70.53.00	D30 2	0907.10.10.00	H10 23
0901.11.05.00	B10 11	0901.21.08.00	B10 10	0905.19.11.00	C30 3	0907.10.10.00	H20 6
0901.11.05.00	C20 17	0901.21.08.00	B10 17	0905.19.11.00	C30 6	0907.10.10.00	H30 11
0901.11.43.00	D30 10	0901.21.08.00	B10 27*	0905.19.11.00	K10 16*	0907.10.10.00	H40 21
0901.11.46.00	B40 12	0901.21.08.00	H20 6	0905.19.12.00	C30 7	0907.10.10.00	H40 25
0901.11.47.00	G10 13	0901.21.08.00	H40 21	0907.10.04.00	B40 49	0907.10.12.00	B30 18
0901.11.47.00	G20 13	0901.21.10.00	G10 9	0907.10.04.00	K20 16	0907.10.12.00	B40 24
0901.11.47.00	G30 12	0901.21.10.00	G20 9	0907.10.05.00	K20 7	0907.10.12.00	B40 17
0901.20.42.00	C30 20	0901.21.10.00	G30 9	0907.10.05.00	K20 9	0907.10.12.00	D30 10
0901.20.42.00	H20 10	0901.21.10.00	G40 9	0907.10.06.00	C30 28	0907.10.12.00	E10 25
0901.20.42.00	H40 16	0901.21.10.00	G50 9	0907.10.06.00	C30 29	0907.10.12.00	K10 7
0901.20.42.00	K11 21*	0901.21.10.00	G60 9	0907.10.06.00	E20 27	0907.10.13.00	B40 25
0901.20.43.00	H20 35	0901.21.10.00	G70 9	0907.10.06.00	H10 14*	0907.10.16.00	A10 12
0901.20.45.00	B10 7	0901.21.11.00	B10 13	0907.10.06.00	H10 3*	0907.10.20.00	B20 6
0901.20.45.00	D20 21	0901.21.12.00	B10 14	0907.10.06.00	H20 8	0907.56.06.00	H20 16
0901.20.45.00	D30 24	0901.21.47.00	A10 13	0907.10.06.00	H20 35	0907.56.08.00	H20 29
0901.20.45.00	H40 5	0901.21.47.00	C30 17	0907.10.06.00	H30 29	0907.60.06.00	H10 22

Part No.	Page No.	Part No.	Page No.	Part No.	Page No.	Part No.	Page No.
0907.60.10.00	C10 16	0910.40.06.00	D30 22	0910.72.54.00	G70 13	0911.10.06.00	H10 14
0907.60.10.00	E10 16	0910.40.06.00	D30 24	0910.73.10.00	D20 24	0911.10.06.00	H10 3
0907.60.12.00	B40 13	0910.40.06.00	H10 21	0910.73.10.00	E10 12	0911.10.06.00	H20 35
0907.60.12.00	B50 9	0910.40.06.00	H40 5	0910.73.10.00	G40 12	0911.10.06.00	H20 8
0907.60.12.00	G10 14	0910.40.06.00	H40 6	0910.73.10.00	G50 12	0911.10.06.00	H30 29
0907.60.12.00	G20 14	0910.40.06.00	K10 16*	0910.73.10.00	G60 12	0911.10.06.00	H40 16
0907.60.12.00	G30 13	0910.40.08.00	K10 2	0910.73.12.00	D20 24	0911.10.06.00	H40 7
0907.60.14.00	B50 5	0910.40.08.00	K10 3	0910.73.12.00	E10 12	0911.10.06.00	J10 52
0907.60.16.00	B20 3	0910.40.08.00	K10 4	0910.73.12.00	G40 12	0911.10.06.00	K11 21
0907.60.20.00	B20 8	0910.40.09.00	D20 28	0910.73.12.00	G50 12	0911.10.08.00	B30 14
0907.60.80.00	B40 3a	0910.40.09.00	H30 19	0910.73.12.00	G60 12	0911.10.08.00	B40 3
0907.60.80.00	B40 34a	0910.40.09.00	H40 19	0910.73.14.00	G40 12	0911.10.08.00	B50 12
0907.80.06.00	J10 44	0910.40.09.00	K11 31*	0910.73.14.00	G50 12	0911.10.08.00	C10 4
0907.80.08.00	B40 54	0910.40.11.00	B10 17	0910.73.14.00	G60 12	0911.10.08.00	C20 4
0907.81.08.00	C20 10	0910.40.11.00	B40 45	0910.73.70.00	G10 16	0911.10.08.00	C30 12
0908.10.30.00	B20 10	0910.40.11.00	C10 15	0910.73.70.00	G20 16	0911.10.08.00	G10 6
0908.20.18.00	A10 7	0910.40.11.00	E10 15	0910.73.70.00	G30 15	0911.10.08.00	G20 6
0908.31.06.00	D30 22	0910.60.06.00	C30 20	0910.73.70.00	G70 12	0911.10.08.00	G30 6
0908.31.06.00	H10 13	0910.60.06.00	C30 28	0910.73.72.00	G10 16	0911.10.08.00	G40 6
0908.82.04.00	B40 23	0910.60.10.00	G10 9	0910.73.72.00	G20 16	0911.10.08.00	G50 6
0908.88.03.00	A10 4	0910.60.10.00	G20 9	0910.73.72.00	G30 15	0911.10.08.00	G60 6
0910.10.06.00	C30 4	0910.60.10.00	G30 9	0910.73.72.00	G70 12	0911.10.08.00	G70 6
0910.10.06.00	H10 3*	0910.60.10.00	G40 9	0910.73.74.00	G10 16	0911.10.08.00	H10 16
0910.10.06.00	H20 12	0910.60.10.00	G50 9	0910.73.74.00	G20 16	0911.10.08.00	H20 17
0910.10.08.00	B40 53	0910.60.10.00	G60 9	0910.73.74.00	G30 15	0911.10.08.00	H20 37
0910.10.08.00	H10 16	0910.60.10.00	G70 9	0910.73.74.00	G70 12	0911.10.08.00	H20 5
0910.10.08.00	H20 30	0910.60.13.00	D20 25	0910.74.85.00	D20 18	0911.10.08.00	H30 19
0910.10.08.00	H30 24	0910.69.90.00	D20 11	0910.74.87.00	D20 18	0911.10.08.00	H30 23
0910.10.08.00	K11 27*	0910.72.01.00	E10 35	0910.74.88.00	D20 18	0911.10.08.00	H40 17
0910.10.08.00	K11 28	0910.72.03.00	E10 35	0910.75.15.00	D20 8	0911.10.08.00	H40 19
0910.10.08.00	K11 33	0910.72.05.00	E10 21	0910.75.17.00	D20 8	0911.10.08.00	H40 24
0910.10.13.00	B50 10	0910.72.05.00	E10 21	0910.75.18.00	D20 8	0911.10.08.00	J10 27
0910.10.13.00	C30 17	0910.72.50.00	C10 9	0910.76.65.00	D20 17	0911.10.08.00	K10 2
0910.10.13.00	E10 27	0910.72.50.00	G10 17	0910.76.75.00	D20 7	0911.10.08.00	K10 3
0910.10.13.00	H20 23	0910.72.50.00	G20 17	0910.80.18.00	H20 37	0911.10.08.00	K11 24
0910.10.13.00	K10 7	0910.72.50.00	G30 16	0910.80.18.00	H40 24	0911.10.08.00	K11 27
0910.10.17.00	C40 3	0910.72.50.00	G40 13	0910.80.30.00	D30 6	0911.10.08.00	K11 28
0910.10.17.00	J10 47	0910.72.50.00	G50 13	0910.80.39.00	D30 11	0911.10.10.00	B10 10
0910.10.21.00	B40 31	0910.72.50.00	G60 13	0910.80.46.00	D30 13	0911.10.10.00	B10 11
0910.10.21.00	C40 5	0910.72.50.00	G70 13	0910.80.92.00	H10 5	0911.10.10.00	B10 13
0910.15.06.00	H10 12	0910.72.52.00	C10 9	0910.81.46.00	B20 11	0911.10.10.00	B10 14
0910.15.06.00	H10 14*	0910.72.52.00	G10 17	0910.81.86.00	J10 15	0911.10.10.00	B10 17
0910.15.06.00	J10 43	0910.72.52.00	G20 17	0910.81.97.00	B40 10	0911.10.10.00	B10 21
0910.15.09.00	B40 35	0910.72.52.00	G30 16	0910.84.45.00	B40 8	0911.10.10.00	B10 24
0910.15.09.00	D30 20	0910.72.52.00	G40 13	0910.89.81.00	G30 17	0911.10.10.00	B10 25
0910.15.11.00	B10 10	0910.72.52.00	G50 13	0910.89.81.00	G70 14	0911.10.10.00	B10 27
0910.15.11.00	B40 38	0910.72.52.00	G60 13	0911.10.04.00	B40 49	0911.10.10.00	B20 14
0910.15.11.00	C20 17	0910.72.52.00	G70 13	0911.10.04.00	K20 16	0911.10.10.00	B40 45
0910.15.11.00	C30 32	0910.72.53.00	G10 17	0911.10.05.00	K20 7	0911.10.10.00	B50 13
0910.15.14.00	B40 26	0910.72.53.00	G20 17	0911.10.05.00	K20 9	0911.10.10.00	C20 17
0910.15.14.00	H20 26	0910.72.53.00	G30 16	0911.10.06.00	B10 7	0911.10.10.00	C20 23
0910.15.22.00	B50 15	0910.72.54.00	C10 9	0911.10.06.00	B10 7	0911.10.10.00	C30 32
0910.15.30.00	J10 2	0910.72.54.00	G40 13	0911.10.06.00	C30 28	0911.10.10.00	H10 23
0910.25.15.00	B50 6	0910.72.54.00	G50 13	0911.10.06.00	C30 29	0911.10.10.00	H20 6
0910.25.26.00	C30 15	0910.72.54.00	G60 13	0911.10.06.00	E20 27	0911.10.10.00	H30 11

Part No.	Page No.	Part No.	Page No.	Part No.	Page No.	Part No.	Page No.
0911.10.10.00	H40 21	0916.11.30.00	B40 11	0926.10.08.00	D10 11	0930.44.77.00	D10 21
0911.10.10.00	H40 25	0916.11.36.00	J10 13	0926.10.08.00	D15 11	0930.44.78.00	D15 21
0911.10.12.00	A10 13	0916.11.99.00	A10 6	0926.10.10.00	D10 9	0930.45.07.00	D10 18
0911.10.12.00	B30 17	0916.21.03.00	B40 41	0926.10.10.00	D15 9	0930.45.07.00	D15 18
0911.10.12.00	B40 14	0917.31.46.00	C40 2	0926.60.02.00	E20 1	0930.45.20.00	D10 23
0911.10.12.00	C20 6	0917.50.83.00	E10 26	0926.60.03.00	E20 8-13	0930.45.23.00	D15 23
0911.10.12.00	C40 9	0917.52.65.00	J10 12	0926.60.04.00	E20 8	0930.45.31.00	D10 19
0911.10.12.00	D20 2	0918.19.12.00	C30 9	0926.60.05.00	E20 9	0930.45.31.00	D15 19
0911.10.12.00	D30 10	0918.19.12.00	C30 33	0926.60.06.00	E20 10	0930.49.02.00	D10 24
0911.10.16.00	A10 12	0918.20.04.00	H40 27	0926.60.07.00	E20 11	0930.49.02.00	D15 24
0912.10.12.00	H20 24	0919.48.92.00	H10 8	0926.60.08.00	E20 12	0930.50.40.00	D10 20
0912.10.12.00	H30 10	0919.48.92.00	K10 12	0926.60.09.00	E20 13	0930.50.40.00	D15 20
0912.10.20.00	H10 6	0919.48.94.00	H10 7	0926.60.12.00	E20 14	0934.15.80.00	H30 13
0912.10.20.00	H10 26*	0919.48.95.00	K10 10	0926.60.14.00	E20 19	0934.15.81.00	H30 17
0912.10.25.00	E10 34	0919.71.10.00	C40 7	0926.60.16.00	E20 16	0934.16.36.00	C10 10
0912.10.26.00	E10 20	0920.13.05.10	E10 18	0926.60.17.00	E20 23	0934.18.14.00	E10 4
0912.10.30.00	C10 8	0920.14.20.00	C10 2	0926.60.18.00	E20 20	0934.18.16.00	E10 1
0912.10.30.00	G10 18	0920.15.34.00	B40 7	0926.60.19.00	E20 18	0934.18.37.00	E10 5
0912.10.30.00	G20 18	0920.15.34.00	J10 11	0926.76.11.00	H30 2*	0934.18.40.00	E10 6
0912.10.30.00	G40 14	0920.19.90.00	B10 5	0926.76.18.00	D20 23	0934.18.91.00	E10 7
0912.10.30.00	G50 14	0920.39.90.00	H20 2	0926.94.10.00	F10 6*	0934.60.27.00	H30 14
0912.10.30.00	G60 14	0922.10.28.00	D20 16	0928.30.02.00	H30 1	0934.60.87.00	H30 16
0912.10.35.00	B40 9	0922.10.48.00	D20 6	0930.13.06.00	D15 1-24	0934.60.88.00	C10 12
0912.10.40.00	D20 14	0922.12.51.00	H30 8	0930.13.08.00	D10 1-24	0934.60.90.00	E10 3
0912.10.40.00	E10 13	0922.12.56.00	E10 32	0930.20.14.00	D10 17	0934.61.07.00	H30 15
0912.15.32.00	H30 9	0922.12.59.00	E10 9	0930.20.14.00	D15 17	0934.64.88.00	C10 41
0912.15.52.00	E10 33	0922.12.87.00	G10 8	0930.20.16.00	D10 6	0934.65.07.00	E10 2
0912.50.10.00	C20 14	0922.12.87.00	G20 8	0930.20.16.00	D15 6	0934.96.01.00	E10 19
0913.10.50.00	C10 5	0922.12.87.00	G30 8	0930.22.18.00	D10 5	0934.99.01.00	C10 13
0913.12.75.00	D20 5	0922.12.87.00	G40 8	0930.22.21.00	D10 1	0934.99.01.00	E10 14
0914.15.47.00	J10 6	0922.12.87.00	G50 8	0930.22.21.00	D15 1	0935.11.02.00	C30 27
0914015.54.00	H20 33	0922.12.87.00	G60 8	0930.22.60.00	D10 10	0935.11.04.00	B40 36
0915.40.32.00	H30 27	0922.12.87.00	G70 8	0930.22.60.00	D15 10	0935.13.01.00	B40 50
0915.50.91.00	B40 29	0922.12.88.00	G40 4	0930.26.70.00	D10 16	0936.45.11.00	B40 42
0915.51.55.00	B30 9	0922.12.88.00	G50 4	0930.26.70.00	D15 16	0936.49.50.00	B40 55
0915.51.58.00	H30 4	0922.12.88.00	G60 4	0930.26.73.00	D10 12	0936.73.50.00	K10 11
0915.51.59.00	J10 3	0922.12.95.00	G10 3	0930.26.73.00	D15 12	0936.90.03.00	B40 56
0915.51.66.00	B40 20	0922.12.95.00	G20 3	0930.28.01.00	D10 4	0936.99.80.00	H30 18
0915.51.87.00	J10 14	0922.12.95.00	G30 3	0930.28.01.00	D15 4	0936.99.81.00	H20 32
0915.51.89.00	B30 11	0922.12.95.00	G70 3	0930.31.04.00	D10 7	0937.17.19.00	C30 31
0915.51.94.00	B30 10	0922.18.03.00	C20 13	0930.31.04.00	D15 7	0937.19.03.00	C30 10
0915.52.22.00	D10 13	0922.18.17.00	C20 20	0930.31.08.00	D10 8	0937.28.99.00	C30 22
0915.52.22.00	D15 13	0922.18.17.00	C20 22	0930.31.08.00	D15 8	0937.51.37.00	B20 9
0916.10.68.00	B40 39	0922.61.43.00	D20 15	0930.34.18.00	C10 1	0937.51.38.00	B20 9
0916.10.95.00	H20 21	0924.10.36.00	D30 8	0930.34.61.00	D15 5	0938.20.40.00	H40 26
0916.10.97.00	C40 4	0924.20.30.00	C20 20+21	0930.40.26.00	D10 3	0938.50.08.00	H40 13
0916.10.97.00	E10 28	0924.20.31.00	C20 21	0930.40.26.00	D15 3	0938.50.08.00	K20 18
0916.10.99.00	B40 27	0924.51.18.00	H30 22	0930.41.03.00	D10 2	0938.90.64.00	K11 30
0916.10.99.00	B40 32	0924.51.18.00	H30 23	0930.41.03.00	D15 2	0938.96.30.00	C30 25
0916.10.99.00	J10 48	0924.53.60.00	H20 7	0930.42.40.00	D10 15	0938.98.40.00	B50 11
0916.11.12.00	B50 16	0924.53.60.00	H20 19	0930.42.41.00	D15 15	0940.10.71.00	H10 11
0916.11.12.00	C40 6	0925.14.40.00	D20 19	0930.42.43.00	D10 14	0940.10.71.00	H10 20
0916.11.18.00	B20 12	0925.14.55.00	D20 10	0930.42.44.00	D15 14	0940.12.70.00	B40 52
0916.11.24.00	C30 16	0925.40.06.00	D20 22	0930.44.18.00	D10 22	0940.16.11.00	E10 24
0916.11.28.00	C20 18	0925.40.19.00	J10 21*	0930.44.19.00	D15 22	0940.20.48.00	H20 22

Part No.	Page No.	Part No.	Page No.	Part No.	Page No.	Part No.	Page No.
0940.22.30.00	C30 30	0944.92.40.00	B30 19	0972.38.81.00	H40 10	1712.08.01.01	B40 1
0940.23.47.00	B40 43	0944.92.41.00	B30 20	0972.46.02.00	K20 10	1712.08.01.14	B40 2
0940.25.21.00	B40 15	0944.92.70.00	B30 6	0972.51.36.00	K20 15	1712.08.01.19	B40 4
0940.25.21.00	C30 34	0944.92.71.00	B30 5	0972.60.01.00	K20 20	1712.08.03.11	B40 18
0940.25.45.00	B40 5	0944.92.90.00	B30 16	0972.62.11.00	E20 22	1712.08.03.12	B40 19
0940.25.45.00	B50 7	0944.92.94.00	B30 8	0972.62.11.00	H40 12	1712.08.04.06	B40 22
0940.52.25.30	C20 16	0944.92.96.00	B30 13	0972.62.11.00	K20 13	1712.08.05.26	B40 40
0940.64.74.00	J10 5	0944.92.97.00	B30 12	0972.64.01.00	E20 21	1712.08.05.35	B40 51
0940.64.92.00	H20 36	0944.92.98.00	B30 15	0972.64.02.00	K20 14	1712.09.01.01	B10 22-
0940.65.37.00	H20 14	0944.93.41.00	B30 7	0972.64.03.00	K20 21	1712.09.01.02	B10 12
0940.88.06.00	H20 11	0944.94.01.00	B30 1-16	0974.10.01.00	K20 1*	1712.09.01.02	B10 22
0940.96.01.00	B40 16	0948.20.02.00	F10 1	0974.10.02.00	K20 2	1712.09.01.08	B10 23
0940.96.01.00	C40 8	0951.11.19.00	J10 45	0974.20.07.00	K20 4*	1712.12.01.00	D20 1-2
0942.10.05.00	A10 1-11	0951.11.41.00	J10 1	0974.20.38.00	K20 3*	1712.12.01.01	D20 1
0942.20.20.00	A10 9	0951.51.19.00	J10 46*	0974.42.01.00	K20 5	1712.12.01.10	D20 3
0942.20.21.00	A10 8	0952.13.03.00	J10 34	0974.46.01.00	K20 8	1712.12.01.16	D20 9
0942.21.40.00	A10 2	0952.13.60.00	J10 26	0974.46.01.00	K20 22	1712.12.03.09	D30 5
0942.22.28.00	A10 11	0952.26.01.00	J10 25	0980.12.10.00	F10 2-5	1712.12.03.13	D30 9
0942.22.65.00	A10 10	0954.12.06.00	J10 28	0980.14.03.00	F10 2*	1712.12.03.18	D30 12
0942.22.89.00	A10 3	0954.12.17.00	J10 49	0980.20.13.00	F10 4*	1712.12.03.28	D30 1
0942.24.95.00	A10 5	0954.12.66.00	J10 16	0980.22.13.00	F10 3*	1712.12.03.36	D30 4
0942.30.68.00	A10 1	0954.31.01.00	J10 35	0980.22.17.00	F10 5*	1712.12.52.08	D30 21
0942.40.02.00	A10 1-10a	0954.31.20.00	J10 17	0982.40.01.00	H20 9	1712.12.52.14	D30 23
0942.40.03.00	A10 1-10a	0954.31.22.00	J10 31	0994.10.31.00	F10 7*	1712.12.92.00	D20 1-2
0942.40.12.00	A10 1	0954.31.80.00	J10 33*	0994.80.17.00	D30 17	1712.14.01.01	G10 1
0942.40.13.00	A10 1	0954.32.10.00	J10 36	0994.80.18.00	D30 18	1712.14.02.01	G10 2+
0942.40.22.00	A10 2	0954.60.05.00	E20 26	0995.10.01.00	B40 46	1712.14.02.01	G20 2+
0942.40.32.00	A10 5	0954.60.40.00	J10 42	0995.10.33.00	B40 48	1712.14.02.01	G70 2+
0942.40.42.00	A10 8	0954.61.85.00	E20 5	0995.10.34.00	B40 47	1712.14.02.05	G10 4
0942.40.44.00	A10 9	0954.62.43.00	J10 51	1121.42.02.06	C20 8	1712.14.02.05	G20 4
0942.40.52.00	A10 10a	0954.66.19.00	E20 15	1121.42.02.31	C20 19	1712.14.02.05	G30 4
0942.40.60.00	A10 3	0955.10.20.00	E20 25	1121.42.02.36	C20 12	1712.14.02.05	G70 4
0942.40.66.00	A10 4	0955.10.21.00	E20 24	1121.63.01.07	K20 6	1712.14.03.01	G10 7
0942.40.72.00	A10 7	0955.16.67.00	J10 24	1701.12.03.01	D20 27	1712.14.03.01	G20 7
0942.40.77.00	A10 6	0955.30.41.00	J10 20	1702.12.92.26	D20 13	1712.14.03.01	G30 7
0944.10.60.00	A10 14-16	0955.31.16.00	J10 29	1702.51.01.03	D30 19	1712.14.03.01	G40 7
0944.11.23.00	A10 22-24	0955.34.04.00	J10 50	1705.14.02.10	G10 10	1712.14.03.01	G50 7
0944.20.23.00	A10 19	0955.34.43.00	E20 4	1705.14.02.10	G20 10	1712.14.03.01	G60 7
0944.20.60.00	A10 14	0955.42.04.00	J10 22	1705.14.02.10	G30 10	1712.14.03.01	G70 7
0944.20.71.00	A10 17	0955.60.33.00	J10 30	1712.02.01.08	B50 2	1712.14.04.01	G10 10-
0944.21.23.00	A10 22	0955.60.43.00	J10 32	1712.02.51.07	A10 13a	1712.14.04.09	G10 15
0944.30.17.00	A10 20*	0955.91.02.00	E20 2	1712.03.02.41	B10 26*	1712.14.04.09	G20 15
0944.30.60.00	A10 15*	0955.91.10.00	J10 18	1712.03.05.01	B10 16	1712.15.04.01	G20 10-
0944.30.68.00	A10 18*	0955.96.01.00	E20 3	1712.04.07.01	B10 19	1712.15.05.01	G20 1
0944.30.86.00	A10 23*	0955.96.08.00	E20 17*	1712.04.07.02	B10 20	1712.16.02.01	G30 2+
0944.51.30.00	A10 21	0955.96.08.00	J10 19	1712.05.01.01	B20 1	1712.16.04.01	G30 10-
0944.51.64.00	A10 16	0971.26.80.00	H40 8	1712.05.02.01	B20 4-6	1712.16.04.09	G30 14
0944.52.20.00	A10 24	0971.34.01.00	H40 4	1712.05.02.02	B20 4	1712.16.06.01	G30 1
0944.80.22.00	A10 16-18	0972.10.01.00	H40 11	1712.05.02.06	B20 5	1712.17.02.01	G40 2
0944.80.23.00	A10 19-21	0972.14.10.00	K20 17	1712.05.03.06	B20 13	1712.17.02.01	G50 2
0944.90.61.00	C30 14	0972.14.44.00	K20 19	1712.07.01.01	B10 3	1712.17.02.01	G60 2
0944.91.50.00	B30 1	0972.16.36.00	K20 11	1712.07.01.08	B10 6	1712.17.02.05	G40 3
0944.91.71.00	B30 2	0972.16.68.00	K20 12	1712.07.02.01	B10 4	1712.17.02.05	G50 3
0944.92.03.00	B30 4	0972.16.86.00	K20 10+11	1712.07.03.01	B10 8	1712.17.04.01	G40 10
0944.92.38.00	B30 3	0972.19.05.00	H40 9	1712.07.03.02	B10 9	1712.17.04.01	G70 10

Part No.	Page No.	Part No.	Page No.	Part No.	Page No.	Part No.	Page No.
1712.17.05.01	G40 1a	1712.34.03.14	H30 26	1712.42.05.05	C30 5	1715.08.05.35	B40 44
1712.17.05.06	G20 1a*	1712.34.03.17	H30 25	1712.42.06.01	C30 8	1715.12.03.24	D30 15
1712.17.05.06	G40 1b*	1712.34.03.20	H30 28	1712.42.08.01	C30 13	1715.25.07.14	E10 22
1712.17.05.06	G50 1b*	1712.34.03.23	H30 30	1712.42.09.01	C30 18	1715.25.08.11	E10 30
1712.17.05.06	G70 1a*	1712.34.04.21	H20 13	1712.42.09.02	C30 19	1715.25.08.23	E10 36
1712.17.06.01	G40 1	1712.34.05.02	H20 18	1712.42.11.01	C30 11	1715.46.04.31	J10 38
1712.18.04.01	G50 10	1712.34.05.05	H20 20	1712.42.90.00	C30 21-33	1715.46.04.32	J10 39
1712.18.04.05	G50 11	1712.34.05.10	H20 25	1712.42.90.01	C30 21	1715.46.04.33	J10 40
1712.18.04.05	G60 11	1712.34.06.01	H40 1-6	1712.42.90.10	C30 23*	1715.46.04.34	J10 41
1712.18.06.01	G50 1	1712.34.06.02	H40 1	1712.42.90.11	C30 24	1715.51.01.01	K10 1
1712.18.06.01	G60 1	1712.34.06.03	H40 2	1712.42.90.13	C30 26	1715.51.01.10	K10 5
1712.19.04.01	G60 10	1712.34.06.04	H40 3	1712.43.01.01	C40 1	1715.51.02.01	K10 6
1712.19.05.01	G50 1a	1712.34.06.29	H40 14	1712.46.02.01	J10 4-6	1715.51.03.01	K10 8
1712.20.04.05	G70 11	1712.34.07.01	H10 17-22	1712.46.02.02	J10 4	1715.51.04.01	K10 9
1712.20.05.01	G70 1	1712.34.07.02	H10 17	1712.46.02.10	J10 7	1715.51.05.01	K10 13
1712.25.05.10	E10 8-9	1712.34.07.12	H10 24	1712.46.03.01	J10 10+11	1715.51.06.01	K10 14
1712.25.07.24	E10 29	1712.34.08.01	H40 18	1712.46.03.02	J10 10	1715.51.07.01	K10 15
1712.25.08.01	E10 17-19	1712.34.08.08	H40 20	1712.51.05.13	B10 18	1715.51.09.01	K11 19
1712.25.08.02	E10 17	1712.34.08.16	H40 23	1712.51.08.01	K11 17	1715.51.09.08	K11 20
1712.25.09.01	E10 31-33	1712.34.08.26	H40 22	1712.51.12.01	K11 29	1715.51.10.07	K11 22
1712.25.09.02	E10 31	1712.34.09.01	H20 31	1712.92.01.01	B50 1	1715.51.10.14	K11 23
1712.27.01.01	H10 1	1712.34.09.05	H20 34	1712.92.01.16	B50 3	1715.51.10.25	K11 25
1712.27.01.12	H10 2	1712.42.01.01	C20 1	1712.92.01.17	B50 4	1715.51.11.01	K11 26
1712.34.01.01	H20 1	1712.42.01.25	C20 2	1715.03.00.00	B10 1	1715.51.13.01	K11 32
1712.34.01.15	H20 2+3	1712.42.01.28	C20 3	1715.04.00.00	B10 2	1715.92.00.00	B50 1-16
1712.34.01.17	H20 3	1712.42.01.35	C20 5	1715.08.02.01	B40 6	1715.92.02.01	B50 14
1712.34.01.20	H20 4	1712.42.02.01	C20 7	1715.08.04.01	B40 21-27	3203.01.04.11	E10 23
1712.34.02.17	H30 6	1712.42.02.12	C20 11-14	1715.08.04.02	B40 21	5633.13.09.06	J10 37
1712.34.02.21	H30 7-9	1712.42.02.13	C20 11	1715.08.04.17	B40 28		
1712.34.03.01	H30 20	1712.42.04.01	C30 1	1715.08.05.01	B40 30		
1712.34.03.07	H30 21	1712.42.04.13	C30 2	1715.08.05.18	B40 37		