



RP 12

SPARE PARTS LIST

Instructions for Ordering Spare Parts

Parts illustrated on the following pages are marked with position numbers. The text below the illustration will tell you part number and description. Changed parts are marked with a stroke in front of position number. To avoid errors each order must contain the following details:

Part number and description of parts (stated in the list)

Quantity of parts required

Requested delivery (post, freight, express)

Full address of purchaser (with postal code)

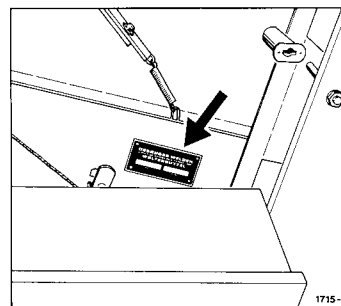
The part numbers listed here have priority over any impressed numbers on parts.

Bolts, nuts, spring washers and washers for mounting complete groups of spare parts are not normally provided in the delivery. If these are required, please give the part number of these fitting parts.

The part number index on the end of the list is for finding parts of which the numbers are known quickly.

Abbreviations:	hex.	=	hexagon
	cpl.	=	complete
	int.	=	interchangeable
	*	=	not illustrated

The Machine number of your baler is stamped into the model data plate shown in the adjoining illustration. As it is essential to quote this number in full in all your enquiries and spare parts orders, we recommend you to note it down in the space below:



Reproduction prohibited.

All rights reserved - Design and construction subject to alterations. Illustrations and technical data are not binding.

Copyright 1985 by Gebrüder Welger GmbH & Co. Kommanditgesellschaft, Wolfenbüttel.

F.W. 5.85. 500 000

G E B R Ü D E R W E L G E R G M B H & C O , K O M M A N D I T G E S E L L S C H A F T
Gebrüder-Welger-Straße P.O. Box 1560 D-3340 Wolfenbüttel
Tel.:(5331) 404-0 Teletex:17-5331831 Cables: Welger Wolfenbüttel



Achse

Road Axle — Essieu

Assale — Eje

A

Gestell und Zubehör

Roll Chamber and Accessories — Chambre de Pressage et Accessoires

Telaio ed Accessori — Canal de Prensado y Accesorios

B

Aufsammler

Pick-up Reel — Ramasseur

Raccoglitore — Recogedor

C

Antrieb

Main Drive — Commande

Trasmissione — Transmision

D

Antriebsketten

Drive Chains — Chaînes de Commande

Trasmissione a Catena — Cadenas de Transmision

E

Werkzeug

Tools — Outillage

Accessorio — Herramientas

F

Walzen

Rollers — Rouleaux

Rulli — Rodillos

G

Bindung

Tying Unit — Liage

Legatore — Atador

H

Hydraulikeinrichtung

Hydraulic System — Equipement Hydraulique

Impianto Idraulico — Dispositivo Hidraulico

J

Schutzvorrichtung und Beleuchtung

Guards and Lighting Equipment — Protecteurs et Eclairage Electrique

Dispositivi di Protezione ed Illuminazione — Dispositivos de Proteccion y Luces

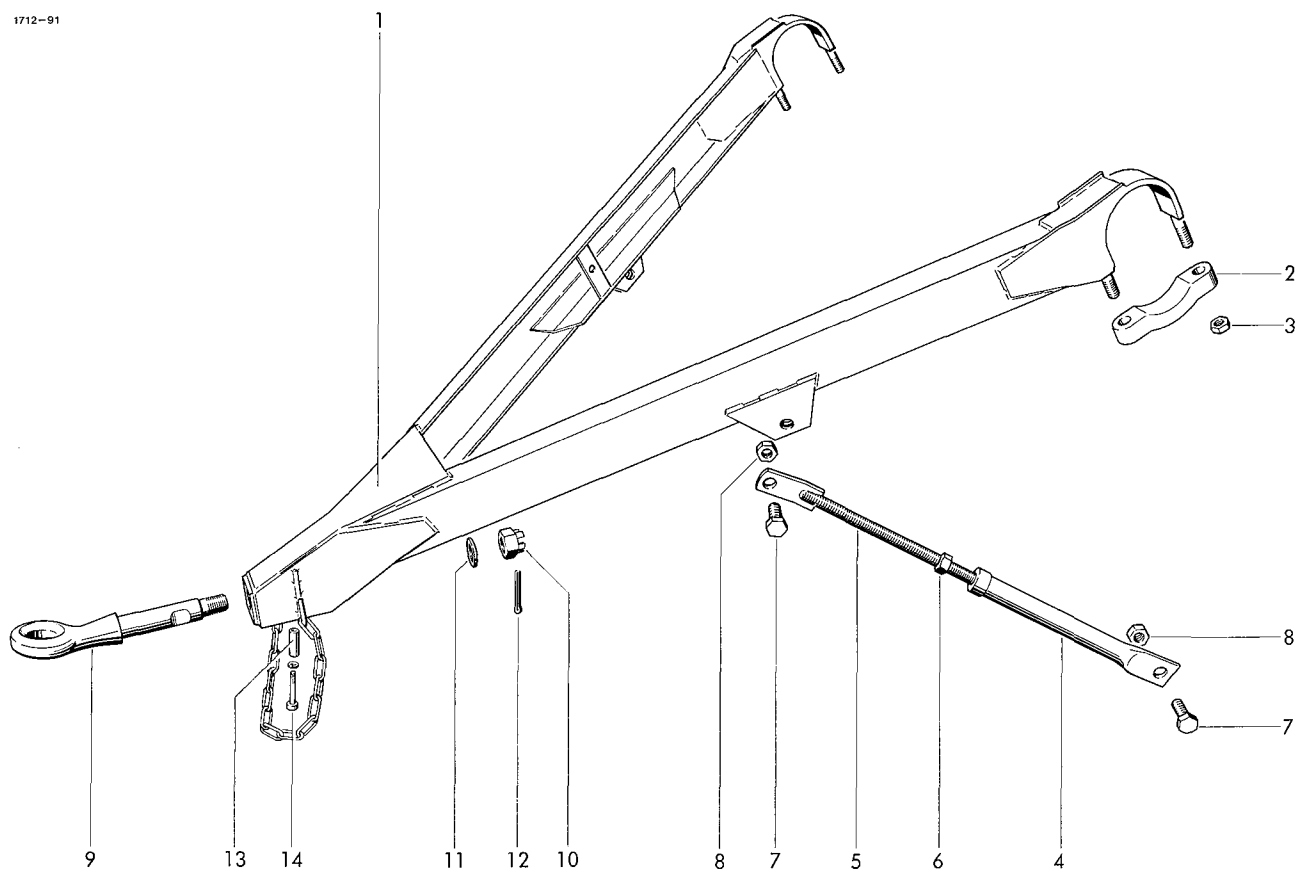
K

Teilnummern-Verzeichnis

Part-Number Index — Répertoire Numérique des Pièces de Rechange

Indice del Codice — Lista de Numero de Referencias de Piezas

L

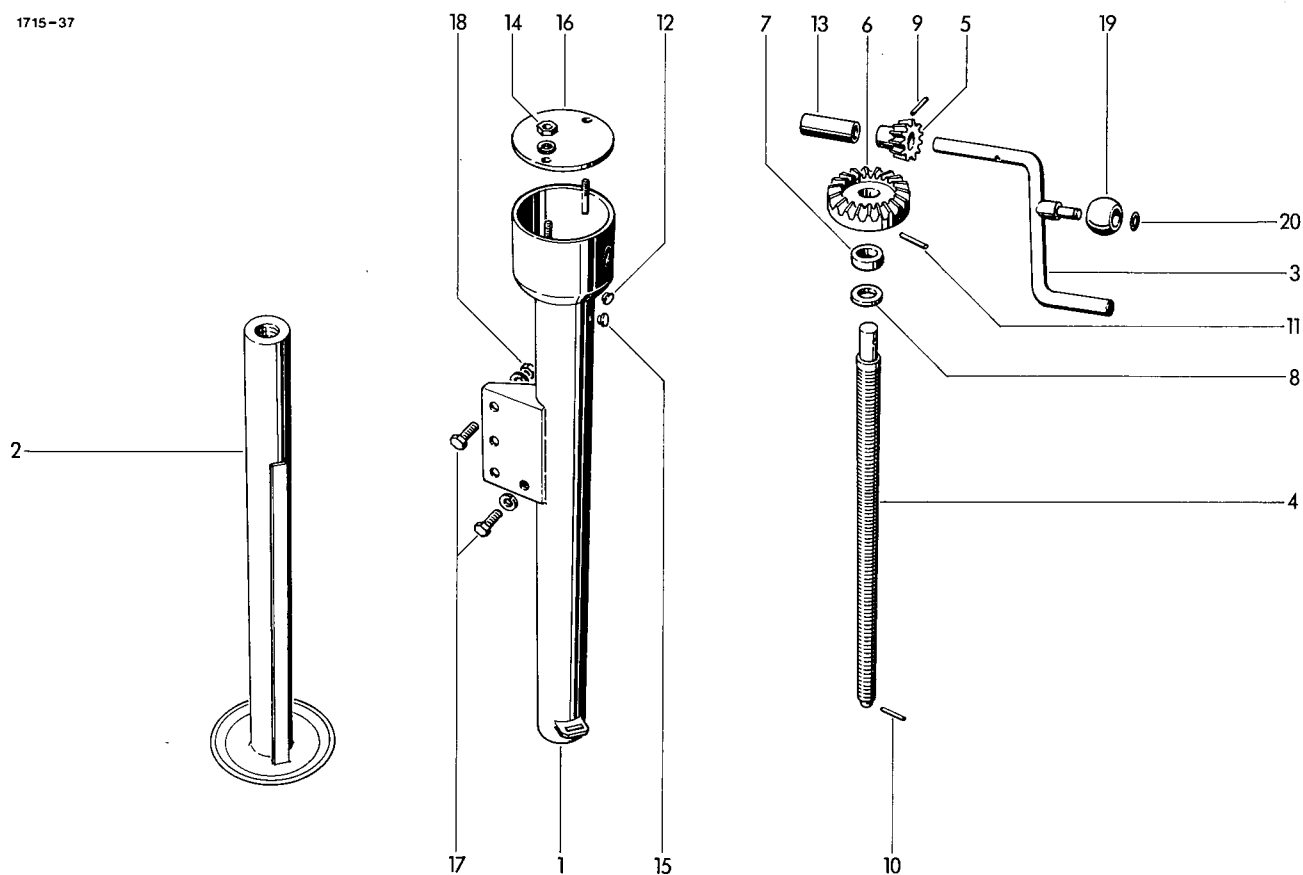


DRAWBAR

1	1712.05.01.01	drawbar
2	0331.85.00.00	clamp
3	0907.60.16.00	safety nut NM 16
4-6	1712.05.02.01	stay
4	1712.05.02.02	bush
5	1712.05.02.06	rod
6	0907.10.20.00	hex. nut M 20
7	0901.23.50.00	hex. bolt M 20x50
8	0907.60.20.00	safety nut NM 20

1	9	0937.51.38.00	hitch cpl. with 10+12	1
2		0937.51.37.00	hitch cpl. with 10+12	1
4	10	0908.10.30.00	castellated nut	1
2	11	0910.81.46.00	washer	1
2	12	0916.11.18.00	split pin	1
2	13	1712.05.03.06	bush	1
2	14	0902.10.70.00	cheese head bolt M 10x55	1
4		0911.10.10.00	spring washer	1
4				

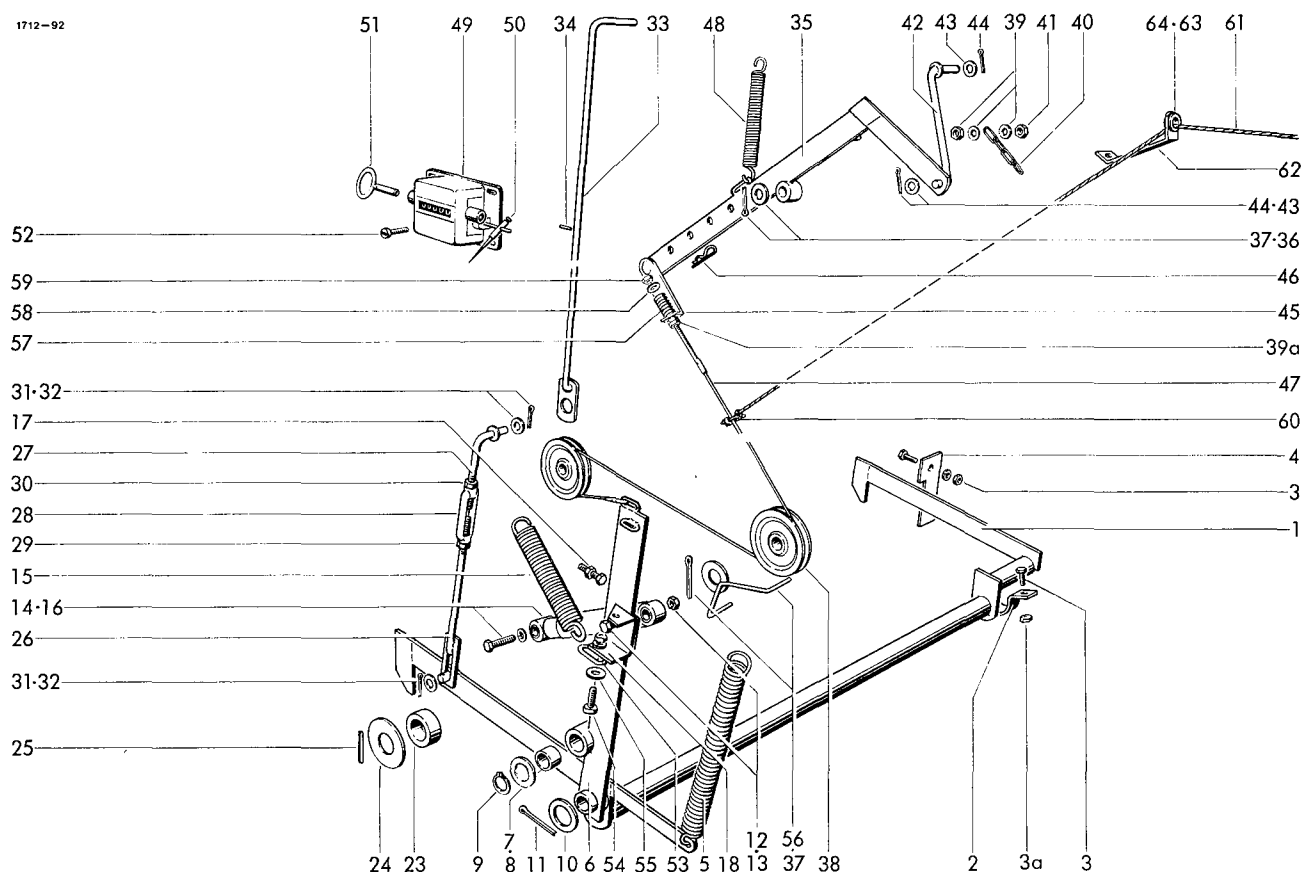
● = 50mm in Dia. / extra equipment



JACK

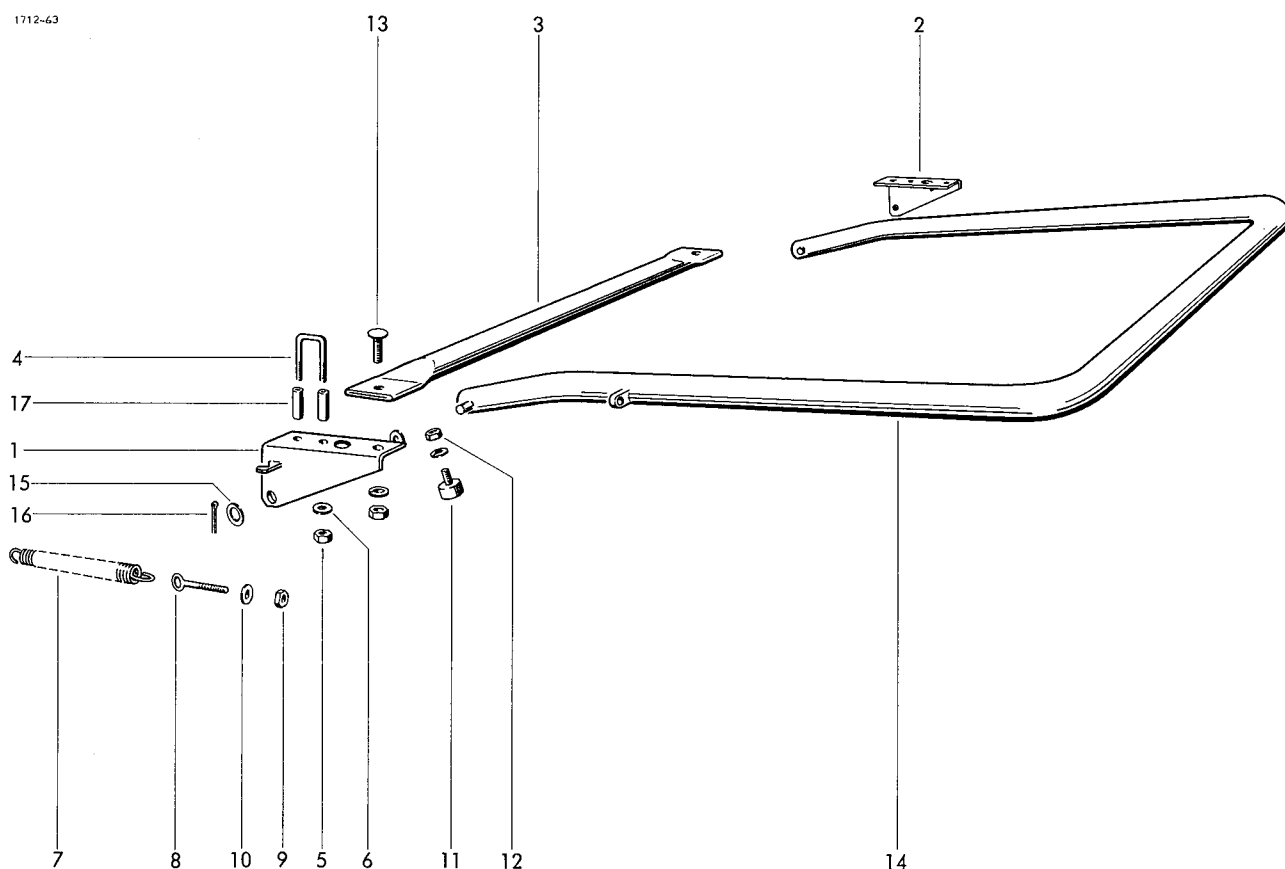
0944.90.11.00
new wheel 1712.06.02.01

1-16	0944.94.01.00	jack cpl.	1	11	0915.51.89.00	expanding pin	1
1	0944.91.50.00	tube	1	12	0944.92.97.00	plug	2
2	0944.91.71.00	inner tube	1	13	0944.92.96.00	spacer tube	1
3	0944.92.38.00	crank handle	1	14	0907.10.08.00	hex. nut M 8	2
4	0944.92.03.00	spindel	1		0911.10.08.00	spring washer	2
5	0944.92.71.00	bevel gear	1	15	0944.92.98.00	plug	1
6	0944.92.70.00	bevel gear	1	16	0944.92.90.00	cover	1
7	0944.93.41.00	tapered roller bearing	1	17	0901.21.50.00	hex. bolt M 12x35	4
8	0944.92.94.00	washer	1		0911.10.12.00	spring washer	4
9	0915.51.55.00	expanding pin	1	18	0907.10.12.00	hex. nut M 12	3
10	0915.15.94.00	expanding pin	1	19	0944.92.40.00	ball	1
			20		0944.92.41.00	snap ring	1



LOCKING DEVICE

1	1712.08.01.01	locking frame	1	35	1712.08.05.01	lever	1
2	1712.08.01.14	clamp	1	36	0910.10.21.00	washer	1
3	0901.20.68.00	hex. bolt M 8x25	4	37	0916.10.99.00	split pin	3
	0907.10.08.00	hex. nut	2	38	0726.15.00.00	roller	2
	0911.10.08.00	spring washer	2	39	0907.10.08.00	hex. nut M 8	1
3a	0907.60.08.00	safety nut NM 8	2		0910.15.09.00	washer	2
4	1712.08.01.19	guide plate	1	39a	0907.10.08.00	hex. nut M 8	2
5	0940.25.21.00	tension spring	1	40	0935.11.04.00	chain	1
6	1712.08.02.01	tens. lever w. No.7	1	41	0907.60.08.00	safety nut NM 8	1
7	0920.15.34.00	bush	1	42	1712.08.05.18	rod	1
8	0910.84.45.00	shim, as required	1	43	0910.15.11.00	washer	2
9	0912.10.35.00	circlip	1	44	0916.10.68.00	split pin	2
10	0910.81.97.00	washer	1	45	1712.08.05.26	angle	1
11	0916.11.30.00	split pin	1	46	0916.21.03.00	spring clip	1
12	0901.11.46.00	hex. bolt M 12x75	1	47	0936.45.16.00	rope	1
13	0907.60.12.00	safety nut NM 12	1	48	0940.22.77.00	tension spring	1
14	0901.21.53.00	hex. bolt M 12x50	1	49	0995.10.01.00	bale cntr. w.50+51	1
	0911.10.12.00	spring washer	1	50	0995.10.34.00	spring lever	1
15	0940.25.45.00	tension spring	1	51	0995.10.33.00	key f.bale counter	1
16	0940.96.01.00	shock absorber	1	52	0902.24.24.00	cheese head bolt M 4x10	4
17	0901.21.53.00	hex. bolt M 12x50	1		0911.10.04.00	spring washer	4
	0907.10.12.00	hex. nut	1		0907.10.04.00	hex. nut	4
18	1712.08.02.25	holder	1	53	0935.13.01.00	chain link	1
23	1712.08.03.11	roller	2	54	0901.21.10.00	hex. bolt M 10x30	1
24	1712.08.03.12	washer	2		0907.10.10.00	hex. nut	1
25	0915.51.66.00	expanding pin	2		0911.10.10.00	spring washer	1
26-32	1712.08.04.01	rod cpl.	1	55	0910.60.10.00	washer	1
26	1712.08.04.02	rod	1	56	1712.08.05.35	safety bracket	2
27	1712.08.04.06	hook	1	57	0940.12.70.00	tension spring	1
28	0908.82.04.00	turnbuckle nut	1	58	0910.10.08.00	washer	1
29	0907.10.12.00	hex. nut M 12	1	59	0907.80.08.00	safety nut M 8	1
30	0907.10.13.00	hex. nut M 12	1	60	0936.90.03.00	rope clamp	1
		left thread		61	0936.49.50.00	rope	1
31	0910.15.14.00	washer	3	62	1712.08.05.44	holder	1
32	0916.10.99.00	split pin	2	63	0361.08.00.00	twine guide eye	1
33	1712.08.04.17	rod with No. 34	1	64	0912.10.20.00	circlip	1
34	0915.50.91.00	expanding pin	1				

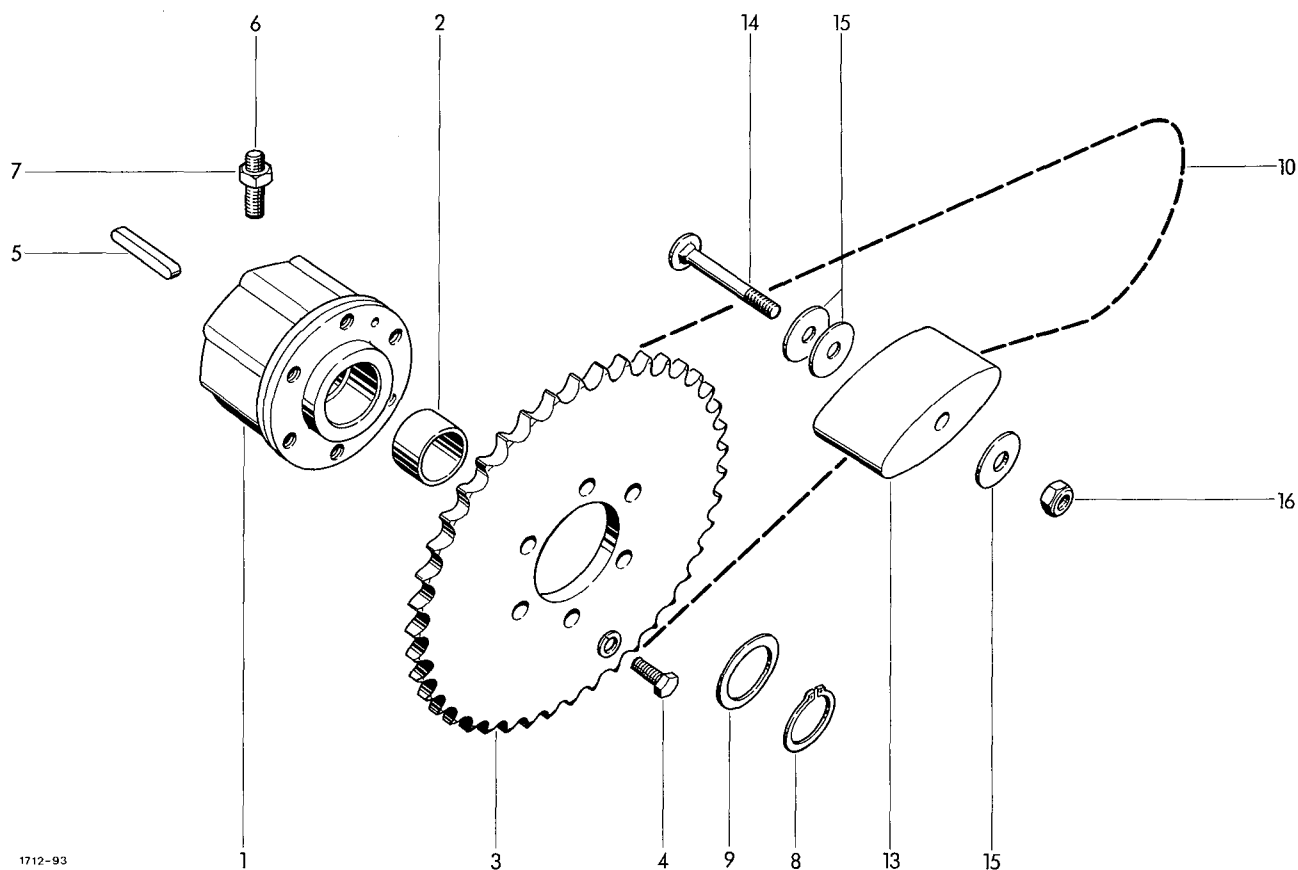


BALE EJECTER
Extra equipment

1-17 1712.92.00.00 bale ejecter cpl. 1

FASTENING PARTS

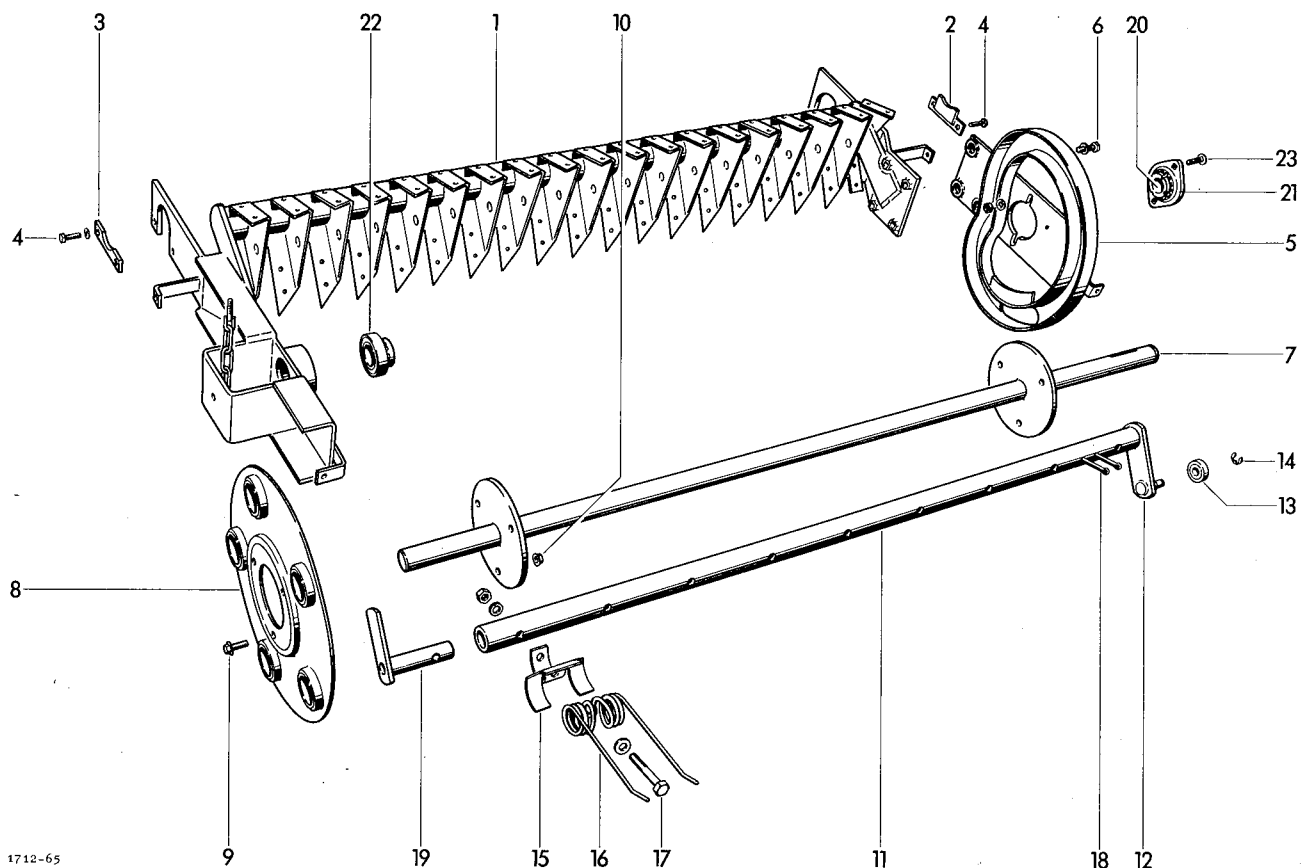
1	1712.92.01.01	bearing block	1	11	0938.98.40.00	rubber buffer	2
2	1712.92.01.08	bearing block	1	12	0907.10.08.00	hex. nut M 8	2
3	1712.92.01.16	tube	1		0911.10.08.00	spring washer	2
4	1712.92.01.17	rod	2	13	0903.10.72.00	cup head bolt M 10x30	2
5	0907.60.14.00	safety nut NM 14	4		0907.10.10.00	hex. nut	2
6	0910.25.15.00	washer	6		0911.10.10.00	spring washer	2
7	0940.25.45.00	tension spring	2	14	1712.92.02.01	rod	1
8	0903.39.13.00	eyebolt M 12x100	2	15	0910.15.22.00	washer	4
9	0907.60.12.00	safety nut NM 12	2	16	0916.11.12.00	split pin	2
10	0910.10.13.00	washer	2	17	1712.92.02.12	distance bush	4



1712-93

PICK-UP DRIVE

1	0930.34.18.00	star ratchet clutch w. No.2	1	10	0934.16.32.00	roller chain	1
2	0920.14.20.00	bush	1	11*	0934.64.88.00	connecting link	1
3	0309.46.00.00	chain sprocket	1	12*	0934.60.88.00	cranked link	1
4	0901.20.66.00	hex. bolt M 8x20	6	13	0934.99.01.00	tension block	1
	0911.10.08.00	spring washer	6	14	0903.10.96.00	cup head bolt	1
5	0913.10.50.00	feather key	1	15	0910.40.11.00	washer	3
6	0904.70.51.00	stud	1	16	0907.60.10.00	safety nut NM 10	1
7	0907.10.10.00	hex. nut M 10	1				
8	0912.10.30.00	circlip	1				
9	0910.72.50.00	shim 0,1mm thick as required					
	0910.72.52.00	shim 0,3mm thick as required					
	0910.72.54.00	shim 1,0mm thick as required					



PICK-UP FRAME

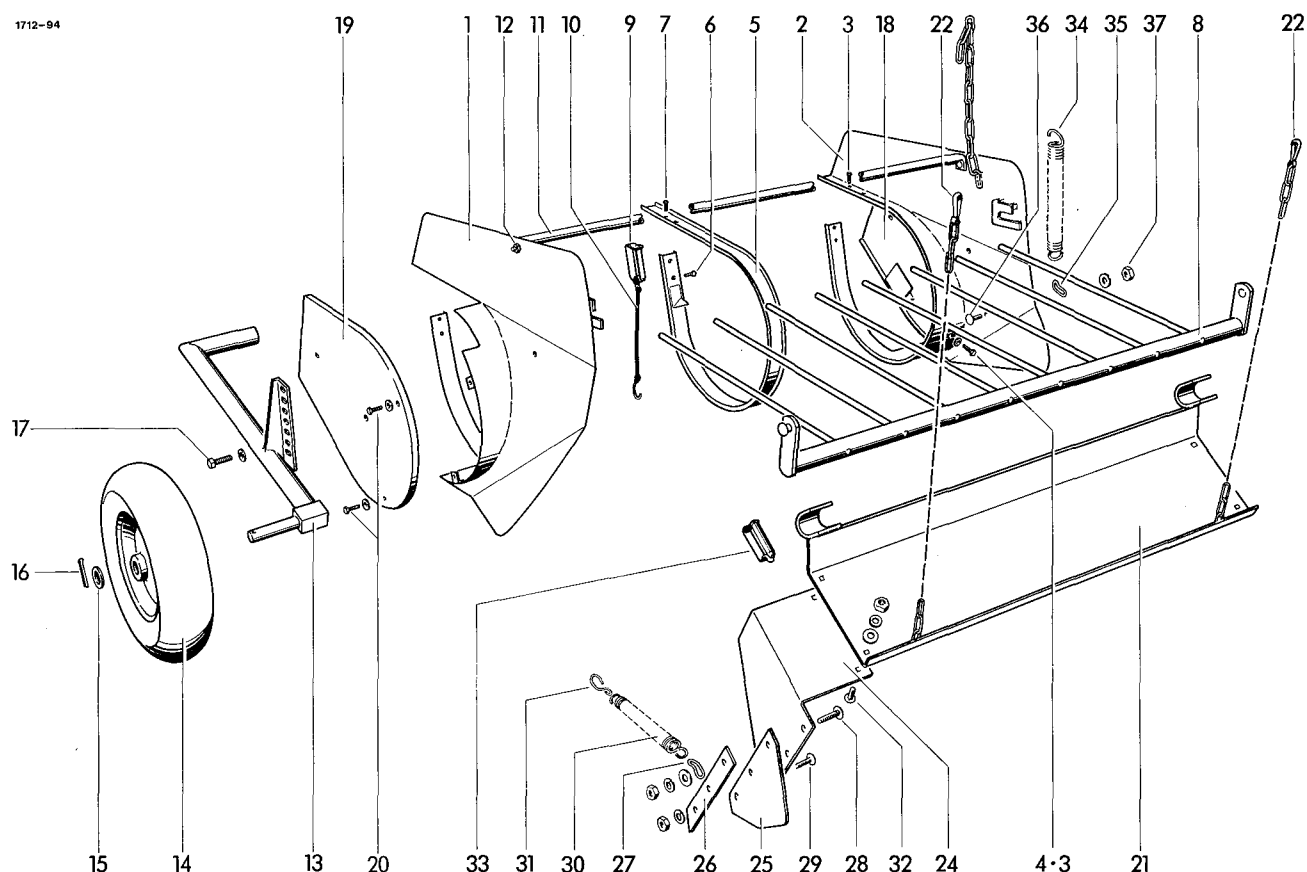
1	1712.42.01.01	frame	1	15	0338.30.00.00	tine holder	45
2	1712.42.01.25	bracket	1	16	0940.52.25.00	spring	45
3	1712.42.01.28	stop	1	17	0901.11.05.00	hex. bolt M 10x60	45
4	0901.20.66.00	hex. bolt M 8x20	4		0907.10.10.00	hex. nut	45
	0911.10.08.00	spring washer	4		0911.10.10.00	spring washer	45
5	1712.42.01.35	guide plate	1		0910.15.11.00	washer	45
6	0901.21.50.00	hex. bolt M 12x35	4	18	0916.11.28.00	split pin	10
	0911.10.12.00	spring washer	4	19	1121.42.02.31	guide	5

PICK-UP DRUM

7	1712.42.02.01	centre shaft
8	1121.42.02.06	bearing plate
9	0901.80.46.00	safety bolt M 8x20
10	0907.81.08.00	safety nut M 8
11-14	1712.42.02.12	tine bar cpl.
11	1712.42.02.13	tine bar with No.12
12	1121.42.02.36	lever
13	0922.18.03.00	ball bearing
14	0912.50.10.00	safety washer

REEL BEARING

1	20+21	0924.20.30.00	flange housing with adjustable bearing	1
2				
6	20	0922.18.17.00	ball bearing with tapered sleeve	1
6				
5	21	0924.20.31.00	housing, parted	1
5	22	0922.18.17.00	ball bearing with tapered sleeve	1
5				
5	23	0903.10.71.00	cup head bolt M 10x25	2
5		0907.10.10.00	hex. nut	2
		0911.10.10.00	spring washer	2



SIDE SHIELD

1	1712.42.04.01	side shield	1
2	1712.42.04.13	side shield	1
3	0905.19.11.00	tapping screw M6x15	10
4	0910.10.06.00	washer	2

SEGMENT

5	1712.42.05.05	segment	17
6	0905.19.11.00	tapping screw M6x15	34
7	0905.19.12.00	tapping screw M6x20	34

WINDGUARD

8	1712.42.06.01	windguard	1
9	0918.19.12.00	spring pin	2
10	0937.19.03.00	safety clip	2
11	1712.42.11.01	rod	1
12	0903.10.40.00	cup head bolt M8x16	2
	0907.10.08.00	hex. nut	2
	0911.10.08.00	spring washer	2

PICK-UP GUIDE WHEEL

13	1712.42.08.01	wheel bracket	1
14	0944.90.61.00	guide wheel	1
15	0910.25.26.00	washer	1
16	0916.11.24.00	split pin	1
17	0901.21.47.00	hex. bolt M 12x25	1
	0910.10.13.00	washer	1

GUARD

18	1712.42.09.01	guard	1
19	1712.42.09.02	guard	1
20	0901.20.42.00	hex. bolt M 6x10	6
	0910.60.06.00	washer	6

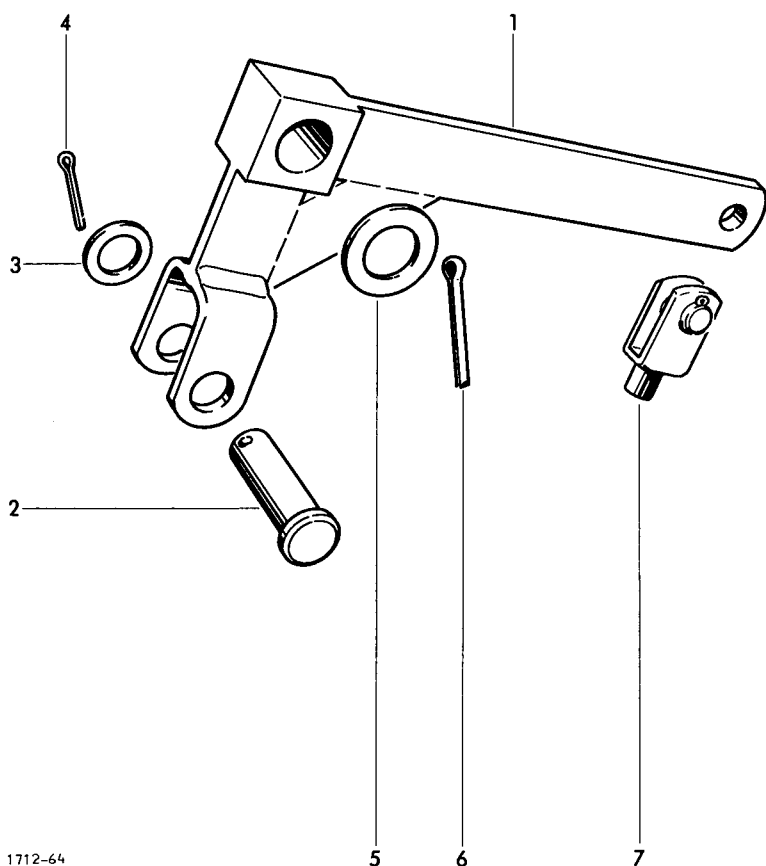
SHIELD

Extra equipment

21-33	1712.42.90.00	pick-up guide shield cpl.	1
21	1712.42.90.01	shield	1
22	0937.28.99.00	safety hook	2
23*	1712.42.90.10	angle shield, left	1
24	1712.42.90.11	angle shield, right	1
25	0938.96.30.00	rubber plate	2
26	1712.42.90.13	bracket	2
27	0935.11.02.00	chain link	2
28	0903.10.18.00	cup head bolt M6x30	2
	0907.10.06.00	hex. nut	2
	0910.60.06.00	washer	2
	0911.10.06.00	spring washer	2
29	0903.10.17.00	cup head bolt M6x25	4
	0907.10.06.00	hex. nut	4
	0911.10.06.00	spring washer	4
30	0940.22.30.00	tension spring	2
31	0937.17.19.00	hook	2
32	0903.10.70.00	cup head bolt M10x20	4
	0907.10.10.00	hex. nut	4
	0910.15.11.00	washer	4
	0911.10.10.00	spring washer	4
33	0918.19.12.00	spring pin	2

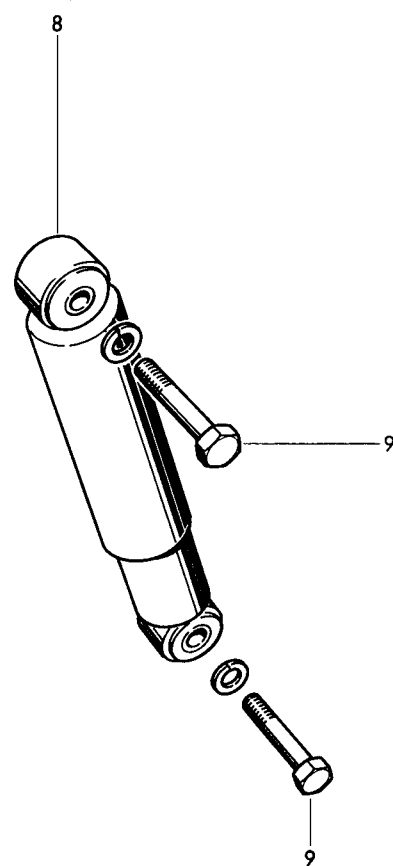
PICK-UP BALANCE SPRING

34	0940.25.21.00	tension spring	1
35	0935.13.03.00	chain link	1
36	0903.10.71.00	cup head bolt M10x25	1
	0910.60.10.00	washer	1
37	0907.60.10.00	safety nut NM 10	1



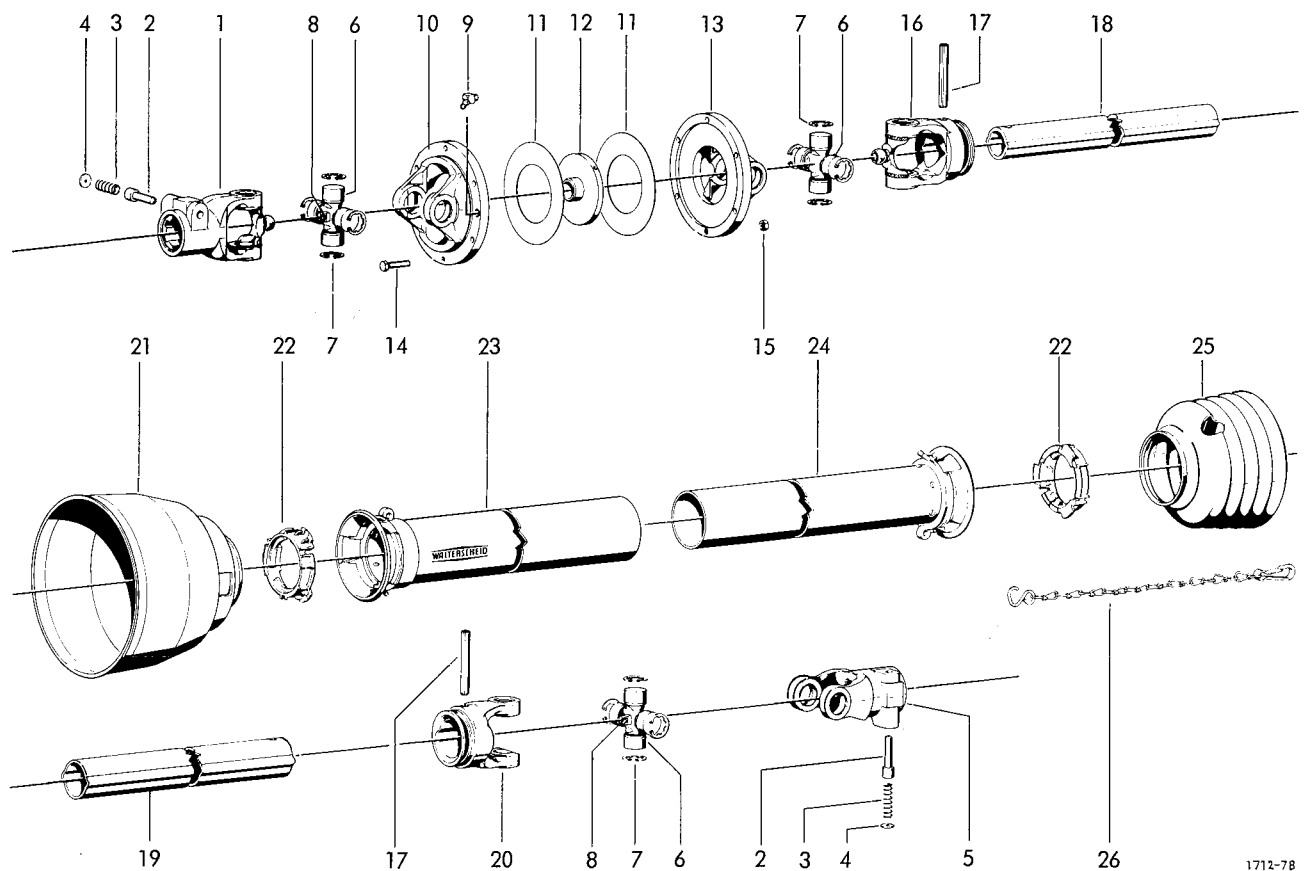
PICK-UP LIFTING DEVICE

1	1712.43.01.01	lever	1
2	0917.31.46.00	pin	1
3	0910.10.17.00	washer	1
4	0916.10.97.00	split pin	1
5	0910.10.21.00	washer	1
6	0916.11.12.00	split pin	1
7	0919.71.10.00	link joint with splint pin	1



SHOCK ABSORBER

1	8	0940.96.01.00	shock absorber	1
1	9	0901.21.53.00	hex. bolt M 12x50	2
1		0911.10.12.00	spring washer	2

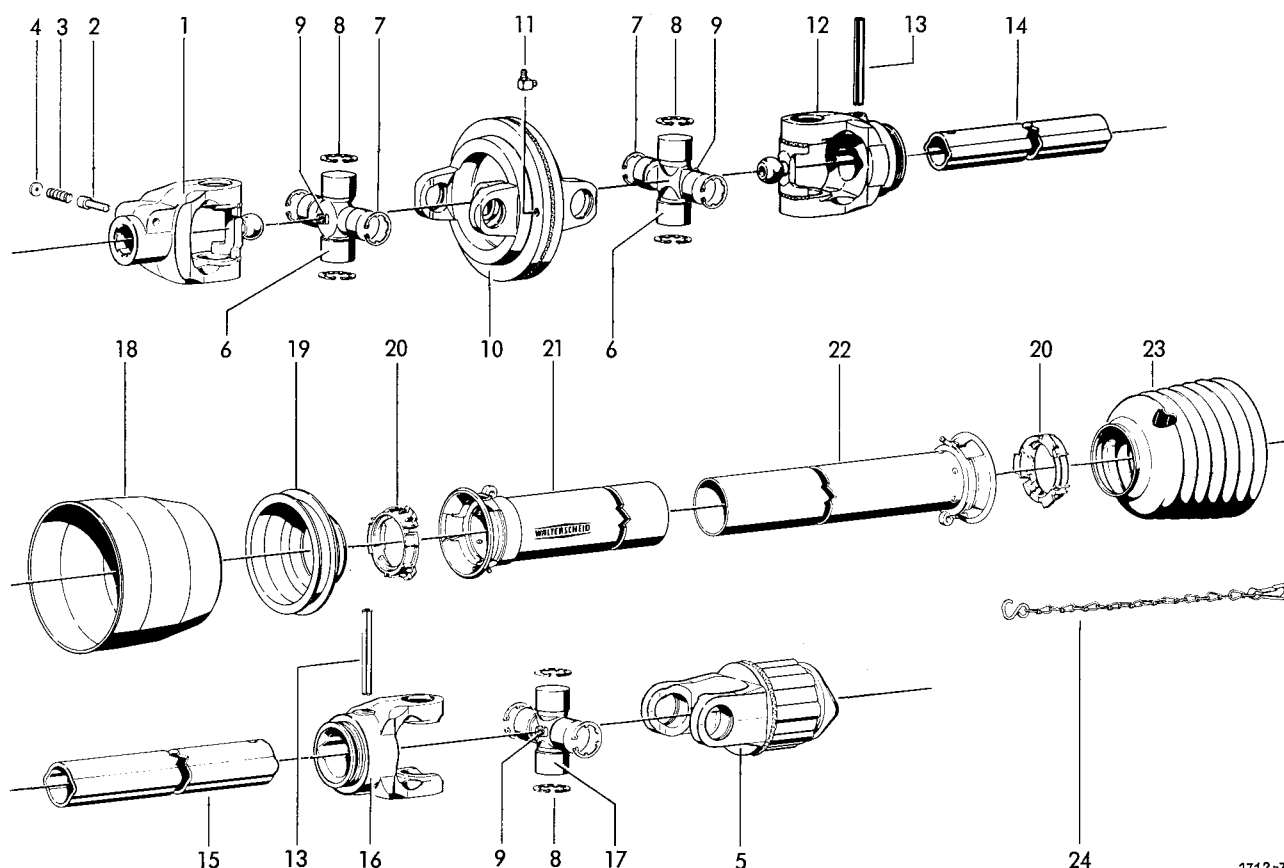


1712-78

WIDE-ANGLE PTO DRIVE SHAFT

1-26	0930.13.07.00	wide-angle pto drive shaft	1	14	0901.20.70.00	hex. bolt M 8x30	6
1	0930.22.12.00	connecting yoke	1	15	0907.10.08.00	hex. nut M 8	6
2	0930.41.03.00	sliding pin	2	16	0930.26.66.00	yoke	1
3	0930.40.26.00	tension spring	2	17	0915.52.21.00	expanding pin	2
4	0930.28.01.00	washer	2	18	0930.42.42.00	+profil tube	1
5	0930.22.11.00	connecting yoke	1	19	0930.42.39.00	+profil tube	1
6	0930.20.06.00	spider unit cpl.with No.7+8	3	20	0930.26.65.00	yoke	1
7	0930.31.04.00	safety ring	12	21	0930.45.09.00	guard funnel	1
8	0926.10.10.00	grease nipple	3	22	0930.50.40.00	guide ring	2
9	0926.10.05.00	grease nipple	1	23	0930.44.76.00	+outer guard tube	1
10	0930.26.03.00	flange	1	24	0930.44.17.00	+inner guard tube	1
11	0930.28.08.00	washer	2	25	0930.45.21.00	guard funnel	1
12	0930.47.60.00	guide flange	1	26	0930.49.02.00	holding chain	1
13	0930.26.04.00	flange	1				

+ = State length

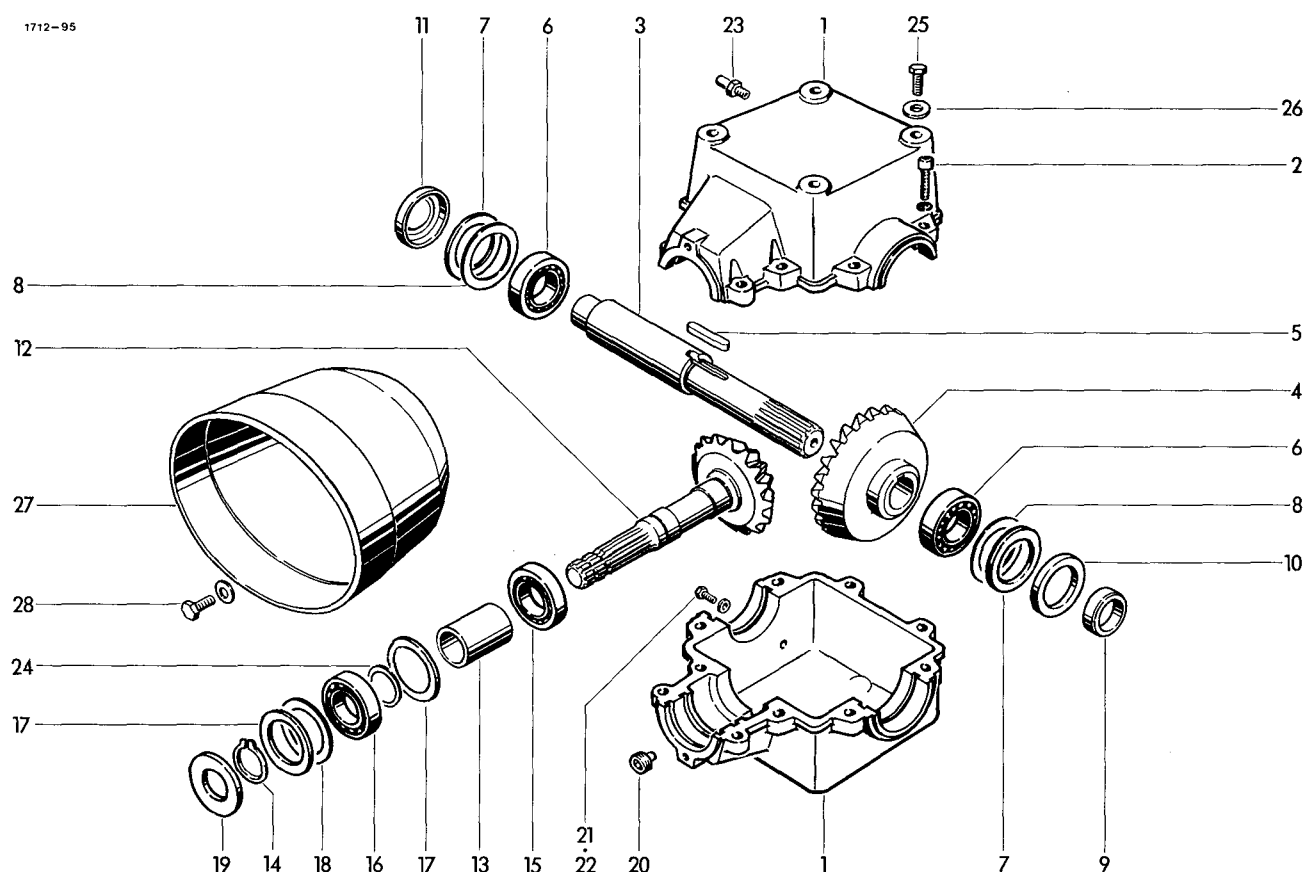


1712-79

WIDE-ANGLE PTO DRIVE SHAFT
WITH FREE-WHEELING DEVICE
Extra equipment

1-24	0930.13.06.00	wide-angle pto drive shaft	1	13	0915.52.22.00	expanding pin	2
1	0930.22.21.00	connecting yoke	1	14	0930.42.44.00	+profil tube	1
2	0930.41.03.00	sliding pin	1	15	0930.42.41.00	+profil tube	1
3	0930.40.26.00	tension spring	1	16	0930.26.70.00	yoke	1
4	0930.28.01.00	washer	1	17	0930.20.14.00	spider unit with No.8+9	1
5	0930.34.61.00	clutch	1	18	0930.45.07.00	guard funnel	1
6	0930.20.16.00	spider unit cpl.with No.7+8	2	19	0930.45.31.00	guard funnel	1
7	0930.31.04.00	safety ring	4	20	0930.50.40.00	guide ring	2
8	0930.31.08.00	safety ring	8	21	0930.44.78.00	+outer guard tube with cover	1
9	0926.10.10.00	grease nipple	3	22	0930.44.19.00	+inner guard tube with cover	1
10	0930.22.60.00	double yoke	1	23	0930.45.23.00	guard funnel	1
11	0926.10.08.00	grease nipple	1	24	0930.49.02.00	holding chain	1
12	0930.26.73.00	yoke	1				

+ State length

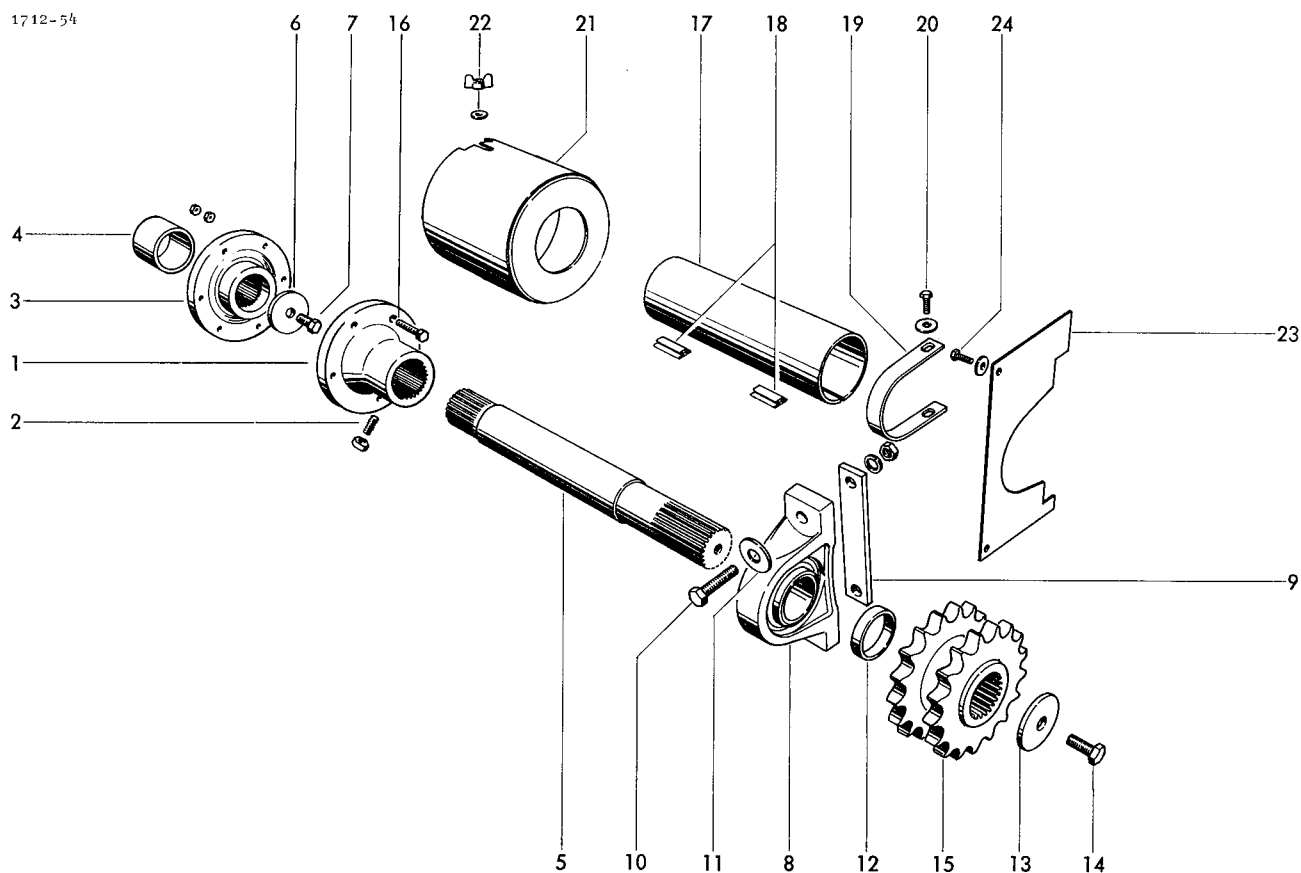


GEAR BOX

1-24	1712.12.01.00	gear box cpl.	1	16	0922.10.28.00	ball bearing	1
	1712.12.92.00	•gear box cpl.	1	17	0910.76.65.00	thrust washer	2
1	1712.12.01.01	gear housing cpl. for No.2	1	18	0910.74.85.00	shim 0,1mm thick as required	
2	0902.11.09.00	cheese head bolt M 12x50	10		0910.74.87.00	shim 0,3mm thick as required	
	0911.10.12.00	spring washer	10		0910.74.88.00	shim 0,5mm thick as required	
3	1712.12.01.10	shaft	1	19	0925.14.40.00	seal	1
4	0307.97.00.00	bevel gear	1	20	0903.80.11.00	lock bolt w. magnet	1
	0307.67.00.00	•bevel gear	1	21	0901.20.45.00	hex. bolt M 6x16	1
5	0913.12.75.00	feather key	1	22	0925.40.06.00	seal	1
6	0922.10.48.00	ball bearing	2	23	0926.76.18.00	breather	1
7	0910.76.75.00	thrust washer	2	24	0910.73.10.00	shim 0,1mm thick as required	
8	0910.75.15.00	shim 0,1mm thick as required			0910.73.12.00	shim 0,3mm thick as required	
	0910.75.17.00	shim 0,3mm thick as required	25		0901.21.49.00	hex. bolt M 12x30	4
	0910.75.18.00	shim 0,5mm thick as required			0910.60.13.00	washer	4
9	1712.12.01.16	bush	1				
10	0925.14.55.00	seal	1				
11	0910.69.90.00	lock washer	1				
12	0307.96.00.00	pinion shaft	1	27	1701.12.03.01	guard	1
	0307.66.00.00	•pinion shaft	1	28	0901.20.66.00	hex. bolt M 8x20	2
13	1702.12.92.26	spacer bush	1		0910.40.09.00	washer	2
14	0912.10.40.00	circlip	1				
15	0922.61.43.00	roller bearing	1				

• = Gear box 1000/m (Extra equipment)

1712-54



CROSS DRIVE

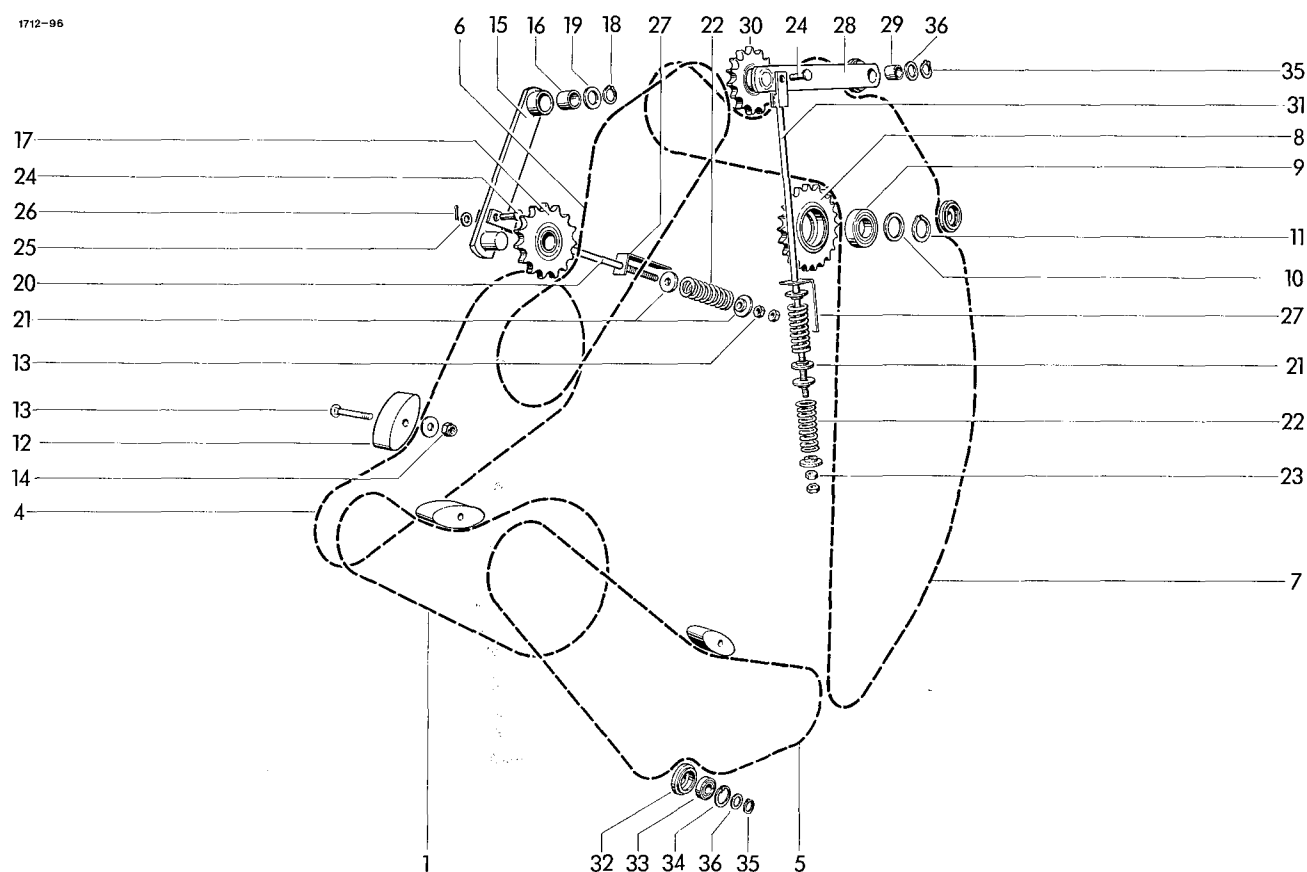
1	1712.12.03.28	flange
2	0904.70.53.00	stud M 10x20
	0907.10.10.00	hex. nut
3	0336.59.00.00	flange
4	1712.12.03.09	spacer tube
5	1712.12.03.09	shaft
6	0910.80.30.00	washer
7	0901.30.65.00	hex. bolt M 10x20
8	0924.10.36.00	pillow block
9	1712.12.03.13	plate
10	0901.11.43.00	hex. bolt M 12x60
	0907.10.12.00	hex. nut
	0911.10.12.00	spring washer
11	0910.80.39.00	washer
12	1712.12.03.18	bush
13	0910.80.46.00	washer
14	0901.30.88.00	hex. bolt M 12x30
15	1712.12.03.24	chain sprocket

SHEAR BOLT

1	16	0901.10.62.00	hex. bolt M 8x50	1
		0907.10.08.00	hex. nut	2

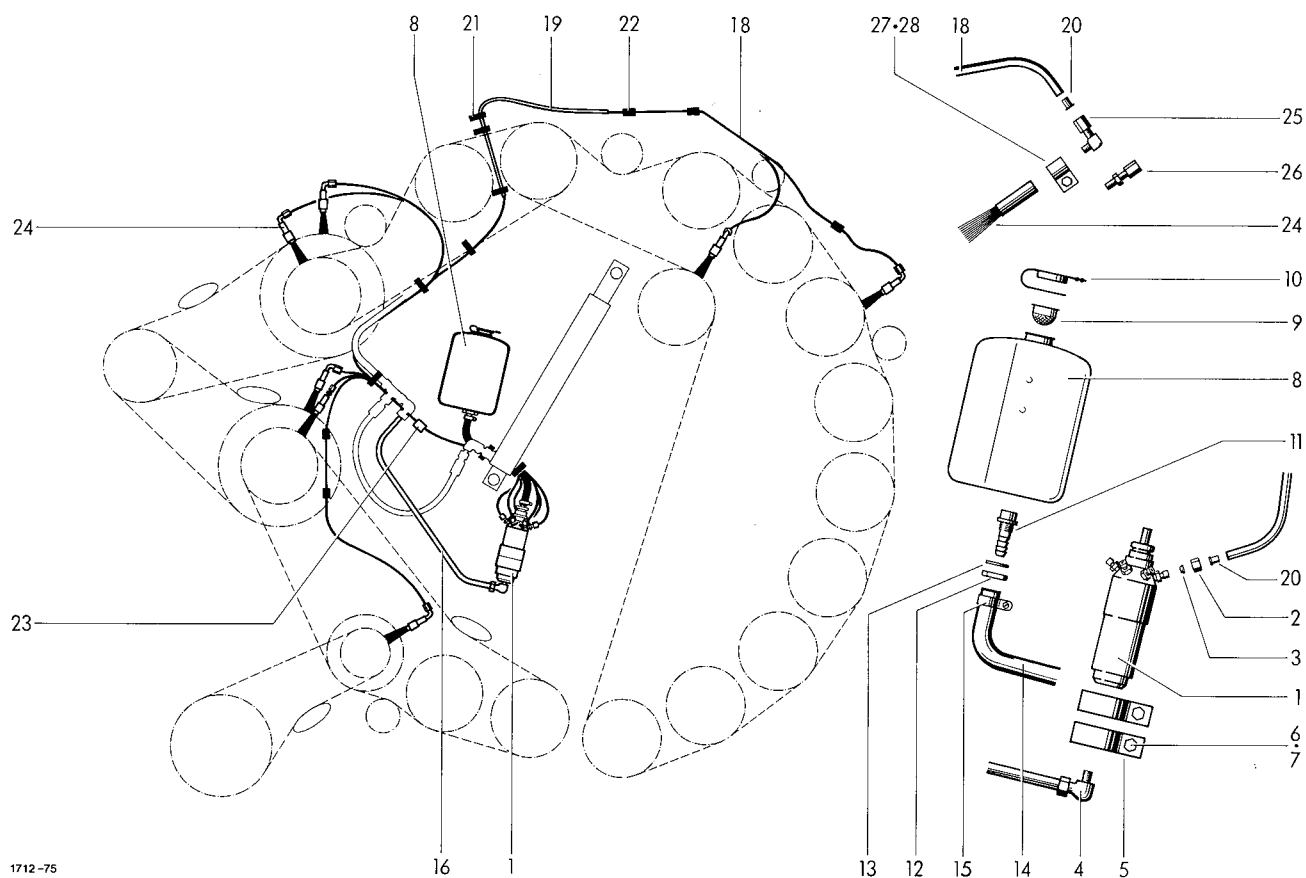
CROSS DRIVE GUARD

1	17	0994.80.17.00	guard tube	1
1	18	0994.80.18.00	clamping piece	2
1	19	1702.51.01.03	clamp	1
1	20	0901.20.66.00	hex. bolt M 8x20	2
1		0910.15.09.00	washer	2
2	21	1712.12.52.08	cover	1
2	22	0908.31.06.00	wing nut	1
2		0910.40.06.00	washer	1
2	23	1712.12.52.14	guard shield	1
1	24	0901.20.45.00	hex. bolt M 6x16	2
1		0910.40.06.00	washer	2



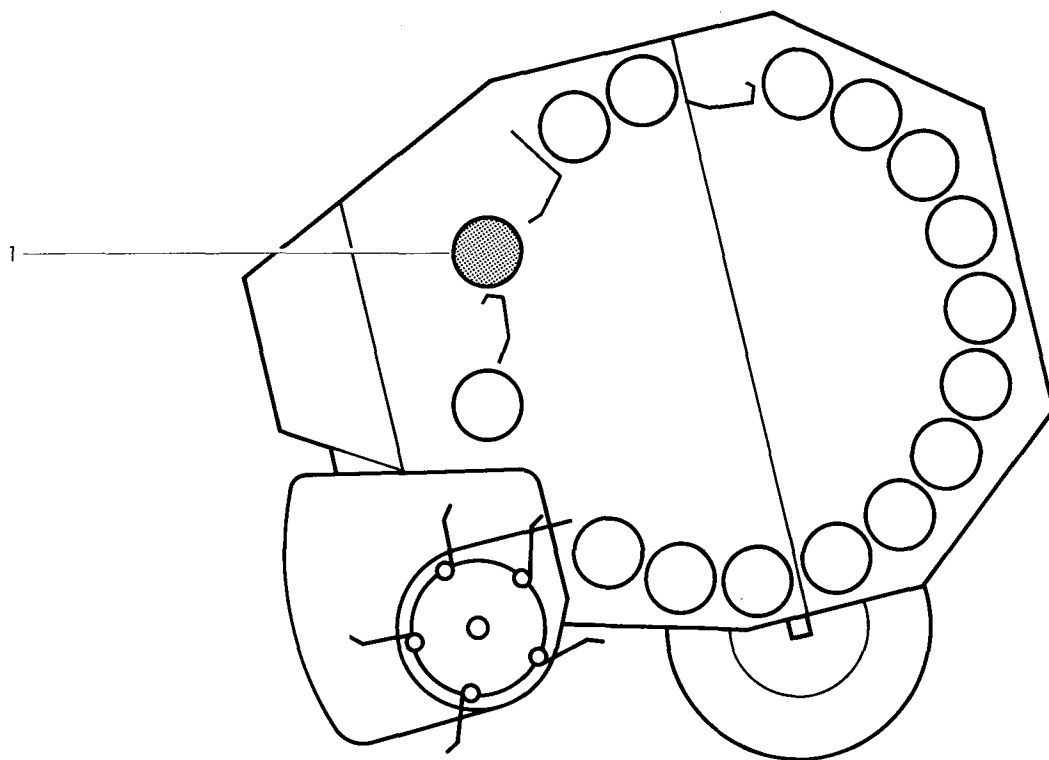
TRANSMISSION PARTS

1	0934.18.13.00	roller chain	1	19	0910.72.05.00	shim as required	
2*	0934.65.07.00	connecting link for No.1	1	20	1712.25.07.14	rod	1
3*	0934.60.90.00	cranked link for No.1	1	21	3203.01.04.11	spring plate	6
4	0934.18.15.00	roller chain with one	1	22	0940.16.11.00	tension spring	3
5	0934.18.38.00	roller chain connecting	1	23	0907.10.12.00	hex. nut M 12	4
6	0934.18.21.00	roller chain link each	1	24	0917.50.83.00	pin	2
7	0934.18.76.00	roller chain	1	25	0910.10.13.00	washer	2
8+9	1712.25.05.10	chain sprocket cpl.	1	26	0916.10.97.00	split pin	2
8	0309.56.00.00	chain sprocket	1	27	1712.25.07.24	gauge	2
9	0922.12.59.00	ball bearing	1	28-30	1712.25.08..01	tension lever cpl.	1
10	0910.73.10.00	shim 0,1mm thick as required	28+29	1712.25.08.07	lever cpl.	1	1
	0910.73.12.00	shim 0,3mm thick as required	28	1712.25.08.02	lever	1	1
11	0912.10.40.00	circlip	1	29	0920.13.25.00	bush	1
12	0934.99.01.00	tension block	3	30	0934.96.01.00	chain tension sprocket	1
13	0903.10.81.00	cup head bolt M 10x75	3	31	1712.25.08.11	rod	1
	0910.40.11.00	washer	3	32-34	1712.25.09.01	guide roller cpl.	3
14	0907.60.10.00	safety nut NM 10	3	32	1712.25.09.02	roller	3
15-17	1712.25.07.01	tension lever cpl.	1	33	0922.12.56.00	ball bearing	3
15+16	1712.25.07.07	lever cpl.	1	34	0912.15.52.00	circlip	3
15	1712.25.07.02	lever	1	35	0912.10.25.00	circlip	3
16	0920.13.25.00	bush	1	36	0910.72.01.00	shim 0,1mm thick as required	
17	0934.96.01.00	chain tension sprocket	1		0910.72.03.00	shim 0,3mm thick as required	
18	0912.10.26.00	circlip	1		0910.72.05.00	shim 1,0mm thick as required	



AUTOMATIC CHAIN
LUBRICATION UNIT
Optional equipment

1	0926.60.02.00	lubricating pump	1	17	0955.96.08.00	cutting ring for subsequent fitting	
2	0955.91.02.00	nut	7				
3	0955.96.01.00	cutting ring	7	18	0926.60.19.00	polyamid tube	12m
4	0955.34.43.00	adjustable angle connection	19		0926.60.13.00	cover tube	1
5	0954.61.85.00	clamp	2	20	0926.60.18.00	insert bush	14
6	0901.20.70.00	hex. bolt M 8x30	2	21	0972.64.01.00	cable clip	8
7	0907.60.08.00	safety nut NM 8	2	22	0972.62.11.00	chassis clamp	5
8-13	0926.60.03.00	tank cpl.	1	23	0972.62.12.00	chassis clamp	1
8	0926.60.04.00	tank	1	24	0926.60.07.00	oil brush	7
9	0926.60.05.00	sieve	1	25	0955.10.21.00	angle connection	6
10	0926.60.06.00	cover	1	26	0955.10.20.00	straight connection	1
11	0926.60.07.00	outlet	1	27	0954.60.05.00	cable clip	7
12	0926.60.08.00	hex. nut M 8	1	28	0901.20.47.00	hex. bolt M 6x20	7
13	0926.60.09.00	seal	1		0907.10.06.00	hex. nut	7
14	0926.60.11.00	tube	1		0911.10.06.00	spring washer	7
15	0954.66.19.00	clip	2				
16	0926.60.15.00	tubing	1				



1712-97

COATING

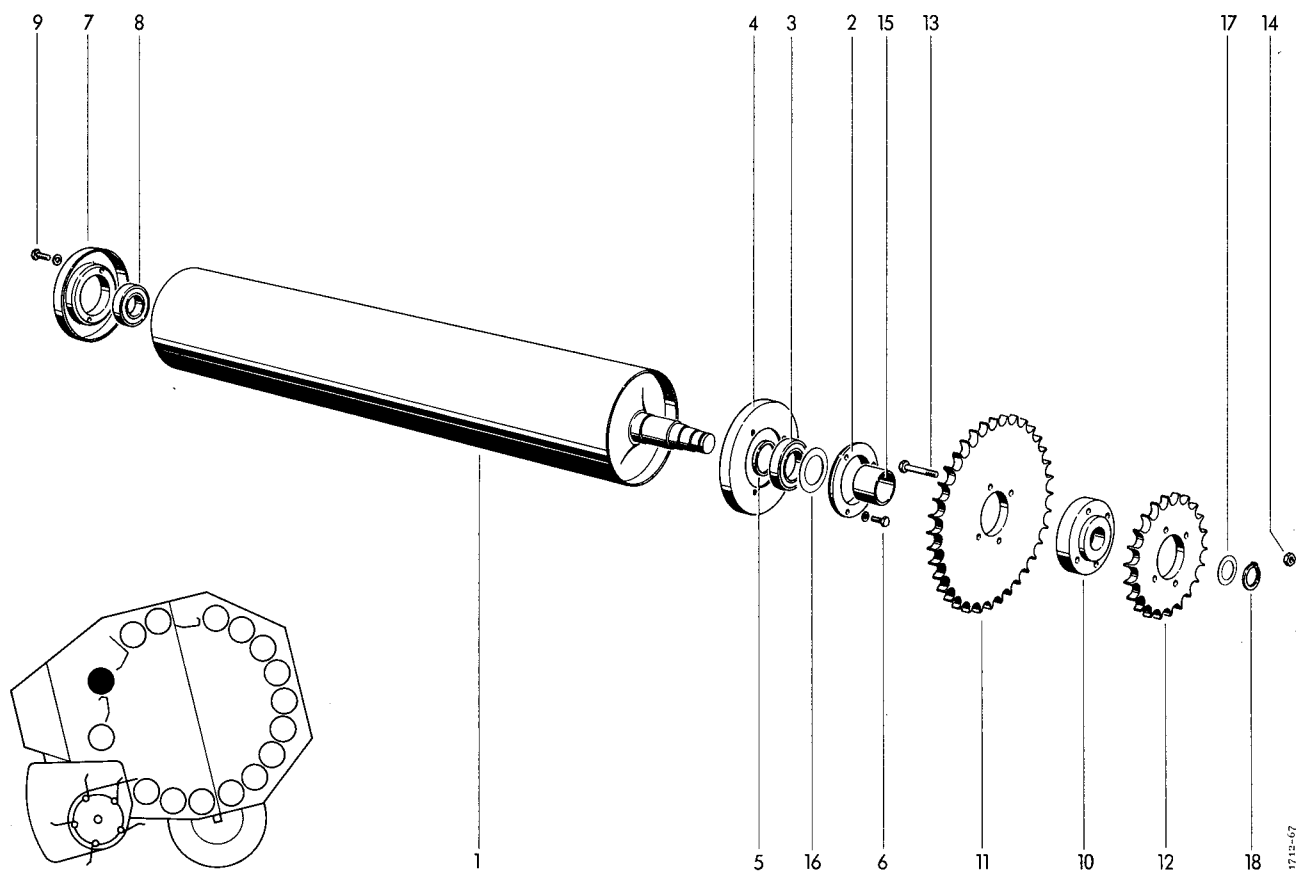
1 0948.20.02.00 +set of coating cpl.

+ = re-coat signet roller only

● = for cross drive

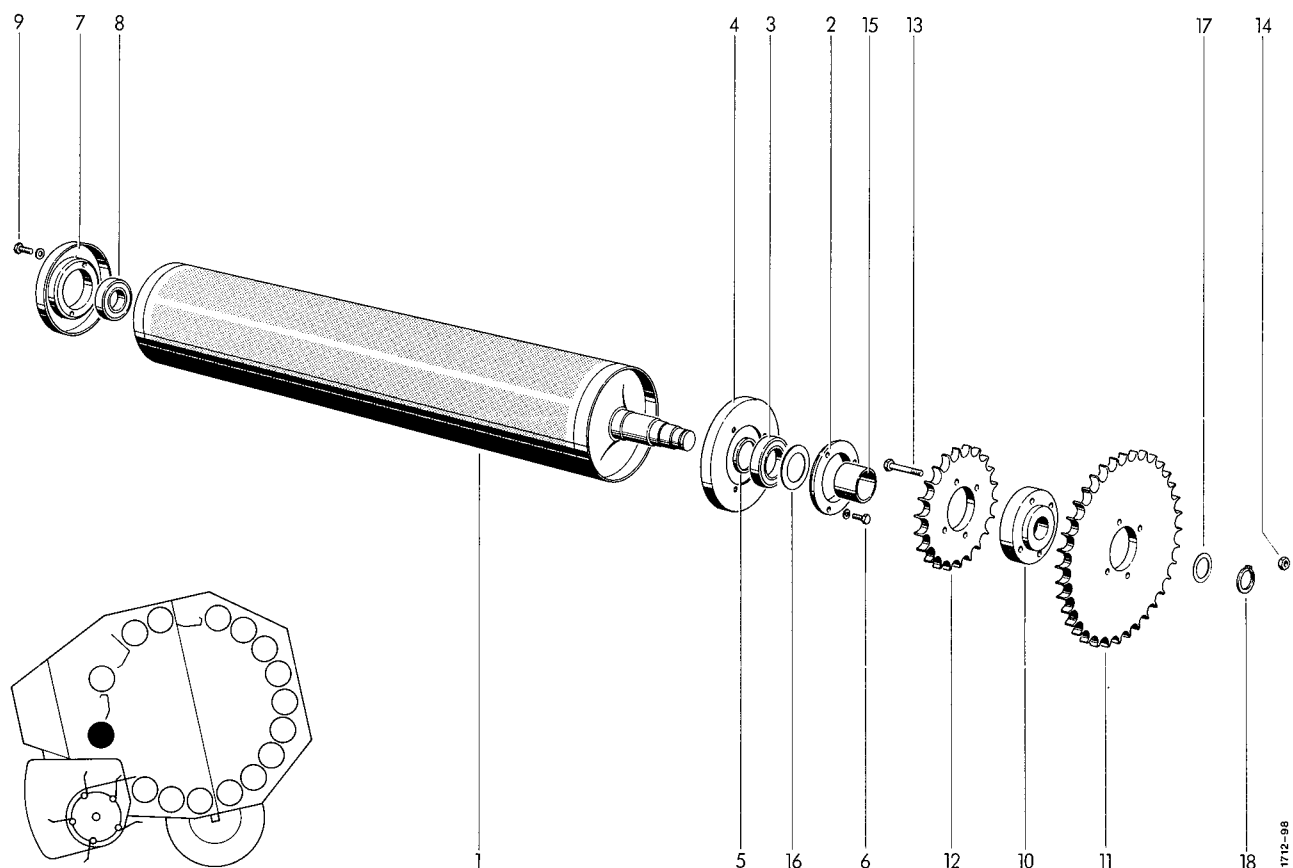
TOOLS WITH ACCESSORIES

1	2-5*	0980.12.10.00	tool bag cpl.	1
	2*	0980.14.03.00	tool bag	1
	3*	0980.22.13.00	double spanner	1
	4*	0980.20.13.00	spanner	1
	5*	0980.22.17.00	double spanner	1
	6*	0926.94.10.00	chain lubricant	1
	7*	0994.10.31.00	chock	2
	8*	0901.10.62.00	●hex. bolt M 8x50	9
	9*	0907.10.08.00	●hex. nut M 8	18



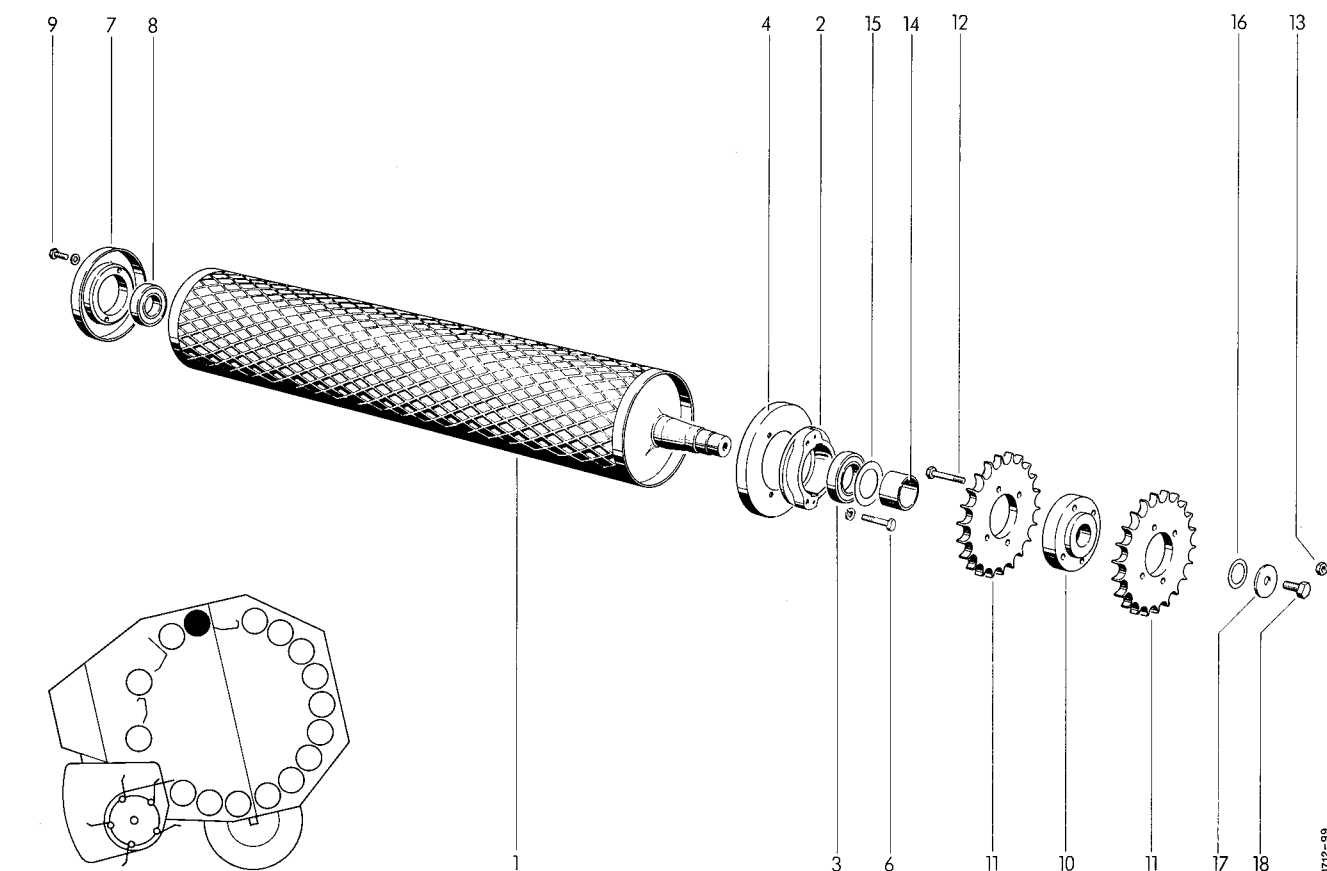
TOP MAIN DRIVE ROLLER

1	1712.14.01.01	roller	1	10	1705.14.02.10	hub	1
2+3	1712.14.02.01	flange bearing cpl.	1	11	0309.42.00.00	chain sprocket	1
2	0312.02.00.00	bearing ring	1	12	0309.23.00.00	chain sprocket	1
3	0922.12.95.00	ball bearing	1	13	0901.11.47.00	hex. bolt M 12x80	4
4	1712.14.02.05	sealing disc	1	14	0907.60.12.00	safety nut NM 12	4
5	0328.63.00.00	distance ring	1	15	1712.14.04.09	spacer bush	1
6	0901.20.68.00	hex. bolt M 8x25	3	16	0910.73.70.00	shim 0,1mm thick as required	
	0911.10.08.00	spring washer	3		0910.73.72.00	shim 0,3mm thick as required	
7	1712.14.03.01	bearing ring	1		0910.73.74.00	shim 1,0mm thick as required	
8	0922.12.87.00	ball bearing	1	17	0910.72.50.00	shim 0,1mm thick as required	
9	0901.21.10.00	hex. bolt M 10x30	2		0910.72.52.00	shim 0,3mm thick as required	
	0910.60.10.00	washer	2		0910.72.53.00	shim 0,5mm thick as required	
10-14	1712.14.04.01	chain sprocket cpl.	1	18	0912.10.30.00	circlip	1



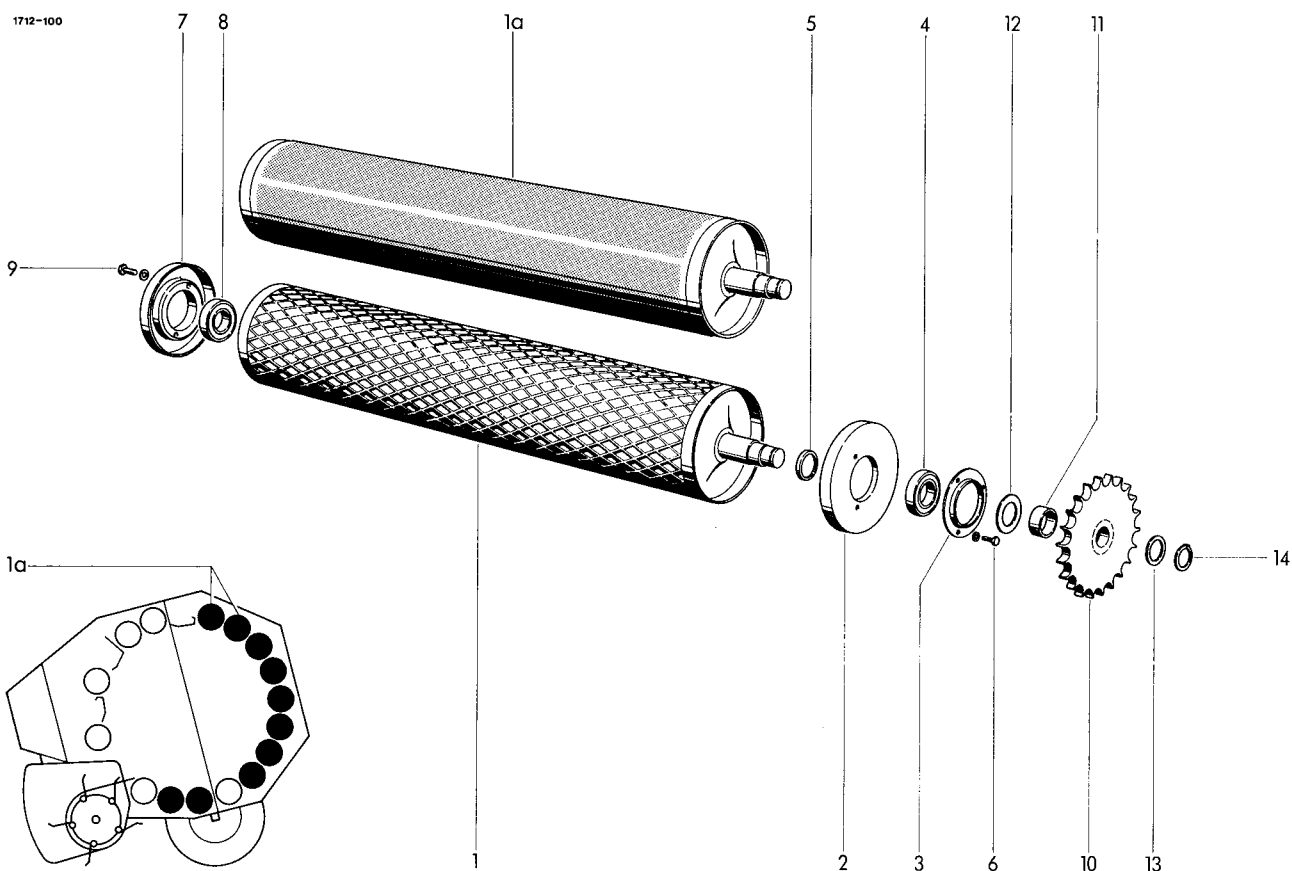
BOTTOM MAIN DRIVE ROLLER

1	1712.15.05.01	profil roller	1	10	1705.14.02.10	hub	1
1a*	1712.17.05.06	dimple sheet for No.1	2	11	0309.42.00.00	chain sprocket	1
2+3	1712.14.02.01	flange bearing cpl.	1	12	0309.23.00.00	chain sprocket	1
2	0312.02.00.00	bearing cpl.	1	13	0901.11.47.00	hex. bolt M 12x80	4
3	0922.12.95.00	ball bearing	1	14	0907.60.12.00	safety nut NM 12	4
4	1712.14.02.05	sealing disc	1	15	1712.14.04.09	spacer bush	1
5	0328.63.00.00	distance ring	1	16	0910.73.70.00	shim 0,1mm thick as required	
6	0901.20.68.00	hex. bolt M 8x25	3		0910.73.72.00	shim 0,3mm thick as required	
	0911.10.08.00	spring washer	3		0910.73.74.00	shim 1,0mm thick as required	
7	1712.14.03.01	bearing ring	1	17	0910.72.50.00	shim 0,1mm thick as required	
8	0922.12.87.00	ball bearing	1		0910.72.52.00	shim 0,3mm thick as required	
9	0901.21.10.00	hex. bolt M 10x30	2		0910.72.53.00	shim 0,5mm thick as required	
	0910.60.10.00	washer	2	18	0912.10.30.00	circlip	1
10-14	1712.15.04.01	chain sprocket cpl.	1				



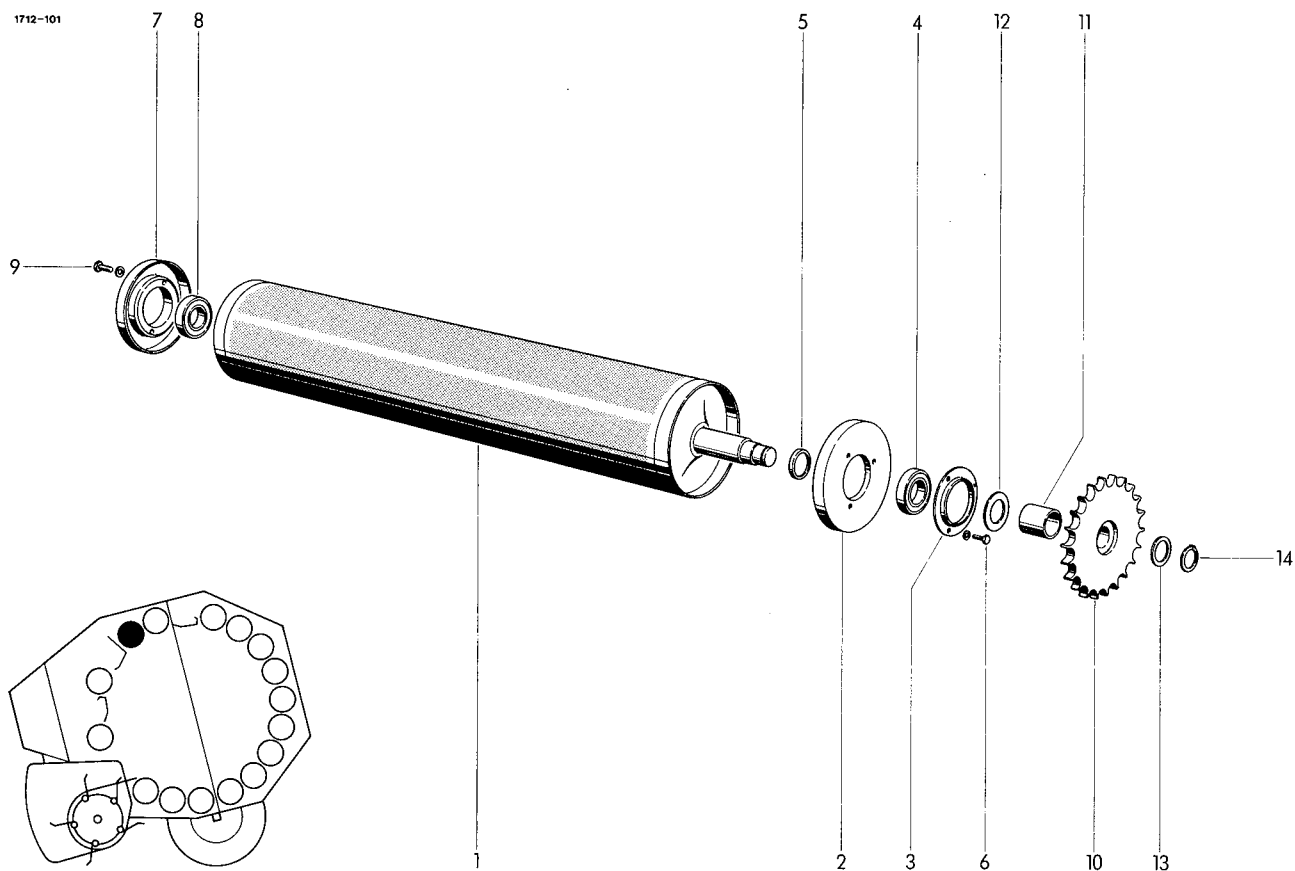
HINGED ROLLER

1	1712.16.06.01	segment roller	1	11	0309.23.00.00	chain sprocket	2
2+3	1712.16.02.01	flange bearing cpl.	1	12	0901.11.47.00	hex. bolt M 12x80	4
2	0712.29.00.00	bearing ring	1	13	0907.60.12.00	safety nut NM 12	4
3	0922.12.95.00	ball bearing	1	14	1712.16.04.09	spacer bush	1
4	1712.14.02.05	sealing disc	1	15	0910.73.70.00	shim 0,1mm thick as required	
6	0901.10.61.00	hex. bolt M 8x45	3		0910.73.72.00	shim 0,3mm thick as required	
	0911.10.08.00	spring washer	3		0910.73.74.00	shim 1,0mm thick as required	
7	1712.14.03.01	bearing ring	1	16	0910.72.50.00	shim 0,1mm thick as required	
8	0922.12.87.00	ball bearing	1		0910.72.52.00	shim 0,3mm thick as required	
9	0901.21.10.00	hex. bolt M 10x30	2		0910.72.53.00	shim 0,5mm thick as required	
	0910.60.10.00	washer	2	17	0910.89.81.00	spring washer	1
10-13	1712.16.04.01	chain sprocket cpl.	1	18	0901.30.85.00	hex. bolt M 12x20	1
10	1705.14.02.10	hub	1				



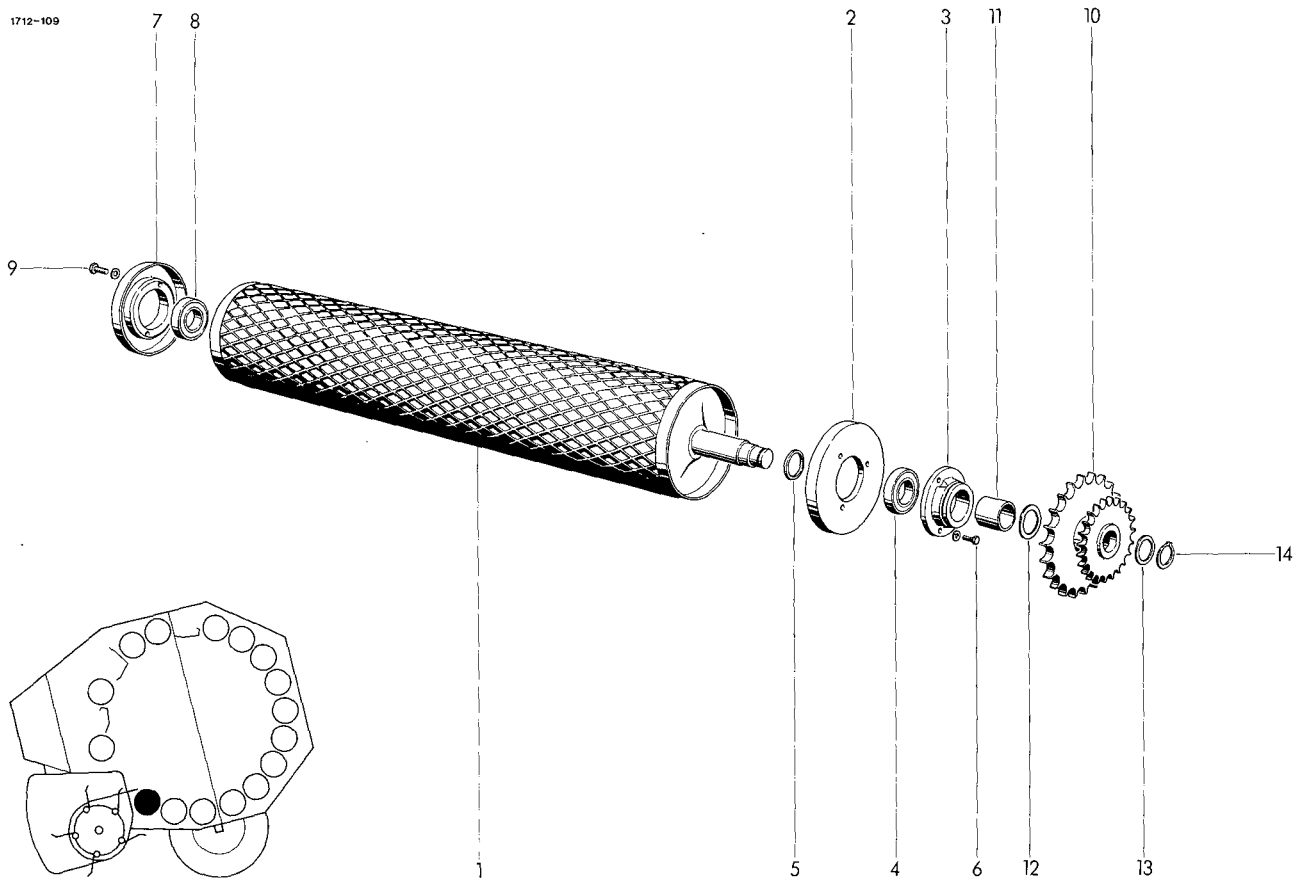
DRIVE ROLLER

1	1712.17.06.01	segment roller	8	9	0901.21.10.00	hex. bolt M 10x30	20
1a	1712.17.05.01	profil roller	2		0910.60.10.00	washer	20
1b	1712.17.05.06	dimple sheet for No.1a	4	10	1712.17.04.01	chain sprocket	10
2	1712.17.02.01	bearing flange	10	11	0328.43.00.00	spacer	10
3	1712.17.02.05	bearing cover	10	12	0910.73.10.00	shim 0,1mm thick as required	
4	0922.12.88.00	ball bearing	10		0910.73.12.00	shim 0,3mm thick as required	
5	0328.48.00.00	thruet ring	10		0910.73.14.00	shim 1,0mm thick as required	
6	0901.20.66.00	hex. bolt M 8x20	30	13	0910.72.50.00	shim 0,1mm thick as required	
	0911.10.08.00	spring washer	30		0910.72.52.00	shim 0,3mm thick as required	
7	1712.14.03.01	bearing ring	10		0910.72.54.00	shim 0,5mm thick as required	
8	0922.12.87.00	ball bearing	10	14	0912.10.30.00	circlip	10



ROLLER

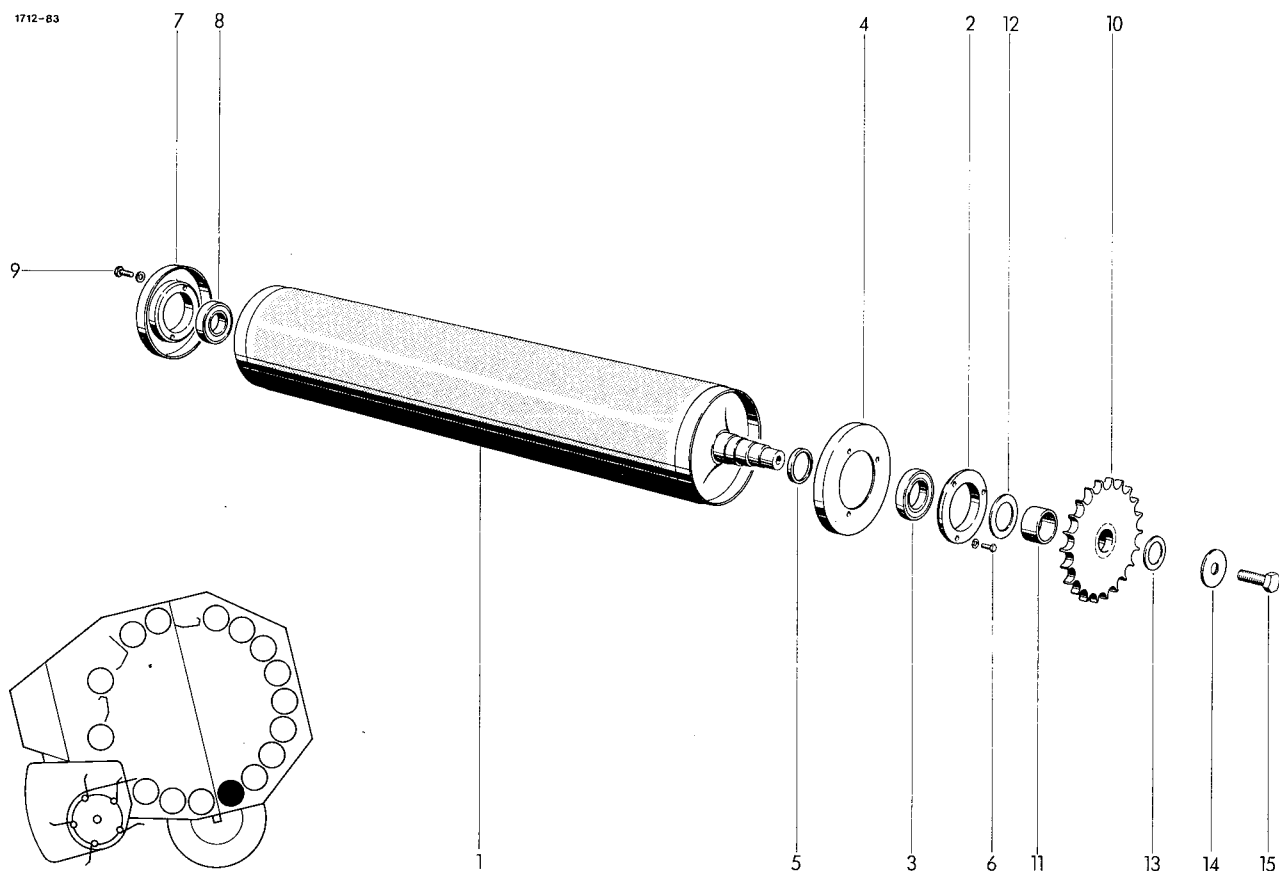
1	1712.19.05.01	profil roller	1	10	1712.18.04.01	chain sprocket	1
1a*	1712.17.05.06	dimple sheet for No.1	2	11	1712.18.04.05	spacer bush	1
2	1712.17.02.01	bearing flange	1	12	0910.73.10.00	shim 0,1mm thick as required	
3	1712.17.02.05	bearing cover	1		0910.73.12.00	shim 0,3mm thick as required	
4	0922.12.88.00	ball bearing	1		0910.73.14.00	shim 1,0mm thick as required	
5	0328.48.00.00	thruet ring	1	13	0910.72.50.00	shim 0,1mm thick as required	
6	0901.20.66.00	hex. bolt M 8x20	3		0910.72.52.00	shim 0,3mm thick as required	
	0911.10.08.00	spring washer	3		0910.72.54.00	shim 0,5mm thick as required	
7	1712.14.03.01	bearing ring	1	14	0912.10.30.00	circlip	1
8	0922.12.87.00	ball bearing	1				
9	0901.21.10.00	hex. bolt M 10x30	2				
	0910.60.10.00	washer	1				



BOTTOM ROLLER

1	1712.18.06.01	segment roller	1	10	1712.19.04.01	chain sprocket	1
2	1712.17.02.01	bearing flange	1	11	1712.18.04.05	spacer bush	1
3	0712.30.00.00	bearing ring	1	12	0910.73.10.00	shim 0,1mm thick as required	
4	0922.12.88.00	ball bearing	1		0910.73.12.00	shim 0,3mm thick as required	
5	0328.48.00.00	thrust ring	1		0910.73.14.00	shim 1,0mm thick as required	
6	0901.20.70.00	hex. bolt M 8x30	3	13	0910.72.50.00	shim 0,1mm thick as required	
	0911.10.08.00	spring washer	3		0910.72.52.00	shim 0,3mm thick as required	
7	1712.14.03.01	bearing ring	1		0910.72.54.00	shim 0,5mm thick as required	
8	0922.12.87.00	ball bearing	1	14	0912.10.30.00	circlip	1
9	0901.21.10.00	hex. bolt M 10x30	2				
	0910.60.10.00	washer	2				

1712-83

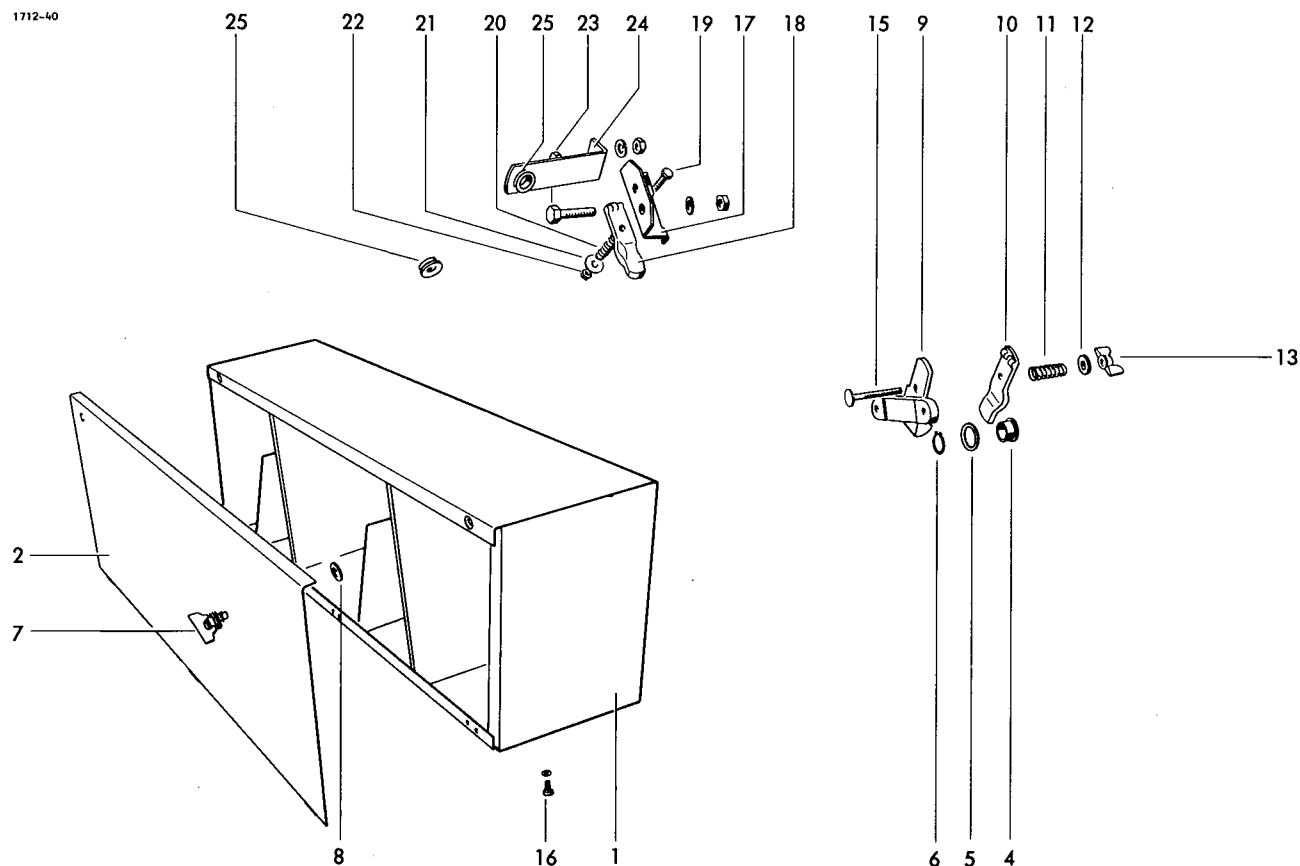


GUIDE ROLLER

1	1712.20.05.01	profil roller
1a*	1712.17.05.06	dimple sheet for No 1
2+3	1712.14.02.01	flange bearing cpl.
2	0312.02.00.00	bearing ring
3	0922.12.95.00	ball bearing
4	1712.14.02.05	sealing disc
5	0328.63.00.00	distance ring
6	0901.20.68.00	hex. bolt M 8x25
	0911.10.08.00	spring washer
7	1712.14.03.01	bearing ring
8	0922.12.87.00	ball bearing

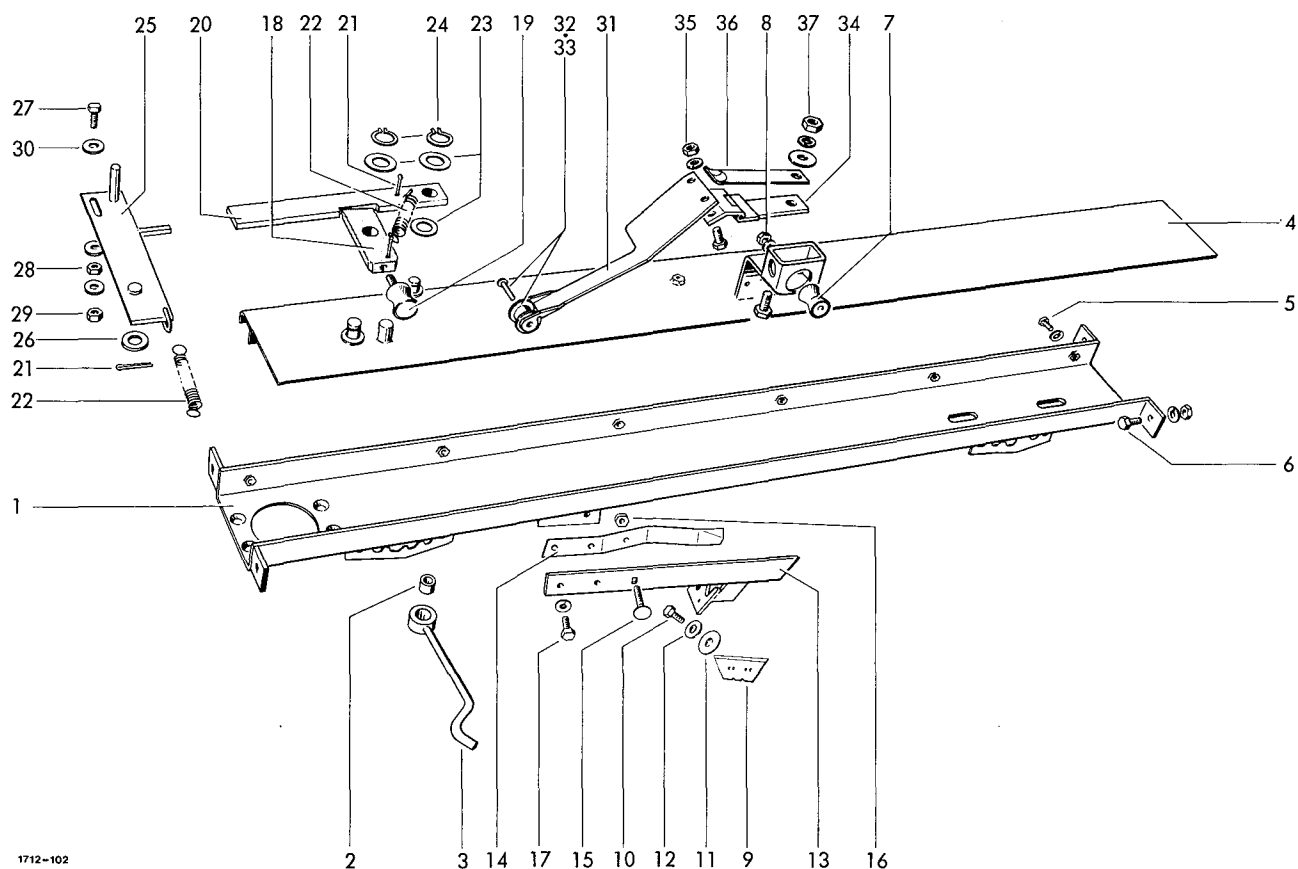
1	9	0901.21.10.00	hex. bolt M 10x30	2
2		0910.60.10.00	washer	2
1	10	1712.17.04.01	chain sprocket	1
1	11	1712.20.04.05	spacer bush	1
1	12	0910.73.70.00	shim 0,1mm thick as required	
1		0910.73.72.00	shim 0,3mm thick as required	
1		0910.73.74.00	shim 1,0mm thick as required	
3	13	0910.72.50.00	shim 0,1mm thick as required	
3		0910.72.52.00	shim 0,3mm thick as required	
1		0910.72.54.00	shim 0,5mm thick as required	
1	14	0910.89.81.00	spring washer	1
15		0901.30.85.00	hex. bolt M 12x20	1

1712-40



TWINE BOX

1	1712.27.01.01	box	1	16	0901.20.66.00	hex. bolt M 8x20	6
2	1712.27.01.12	cover	1		0907.10.08.00	hex. nut	6
3*	0902.50.44.00	countersunk bolt for No.2 M 6x16			0910.10.08.00	washer	6
	0907.10.06.00	hex. nut	6		0911.10.08.00	spring washer	6
	0910.10.06.00	washer	6				
	0911.10.06.00	spring washer	6				
4	0361.08.00.00	twine guide eye	1	17-22	1712.34.07.01	twine tensioner cpl.	1
5	0910.80.92.00	washer	1	17	1712.34.07.02	tension plate	1
6	0912.10.20.00	circlip	1	18	0761.03.00.00	twine tensioner, top part	1
7	0919.48.94.00	cover lock	2	19	0901.20.54.00	hex. bolt M 6x45	1
8	0919.48.92.00	holding washer	2	20	0940.10.71.00	tension spring	1
9	0761.02.00.00	twine tensioner, bottom part	1	21	0910.40.06.00	washer	1
10	0761.03.00.00	twine tensioner, top part	1	22	0907.60.06.00	safety nut NM 6	1
11	0940.10.71.00	tension spring	1	23	0901.21.06.00	hex. bolt M 10x20	3
12	0910.15.06.00	washer	1		0907.10.10.00	hex. nut	3
13	0908.31.06.00	wing nut M 6	1		0911.10.10.00	spring washer	3
14*	0902.24.67.00	cheese head bolt for No.9 M 6x20	2	24	1712.34.07.12	guide arm	1
	0907.10.06.00	hex. nut	2	25	0361.08.00.00	twine guide eye	2
	0910.15.06.00	washer	2	26*	0912.10.20.00	circlip for No.25	2
	0911.10.06.00	spring washer	2				
15	0903.10.26.00	cup head bolt M 6x70	1				



HOUSING FOR TYING UNIT

1	1712.34.01.01	beam
2+3	1712.34.01.15	range spacer
2	0920.39.90.00	torsion roller
3	1712.34.01.17	hook
4	1712.34.01.20	cover shield
5	0901.20.66.00	hex. bolt M 8x20
	0911.10.08.00	spring washer
6	0901.21.08.00	hex. bolt M 10x25
	0907.10.10.00	hex. nut
	0911.10.10.00	spring washer
7	0924.53.60.00	guide roller
8	0907.10.06.00	hex. nut M 6
	0911.10.06.00	spring washer

CUTTING UNIT

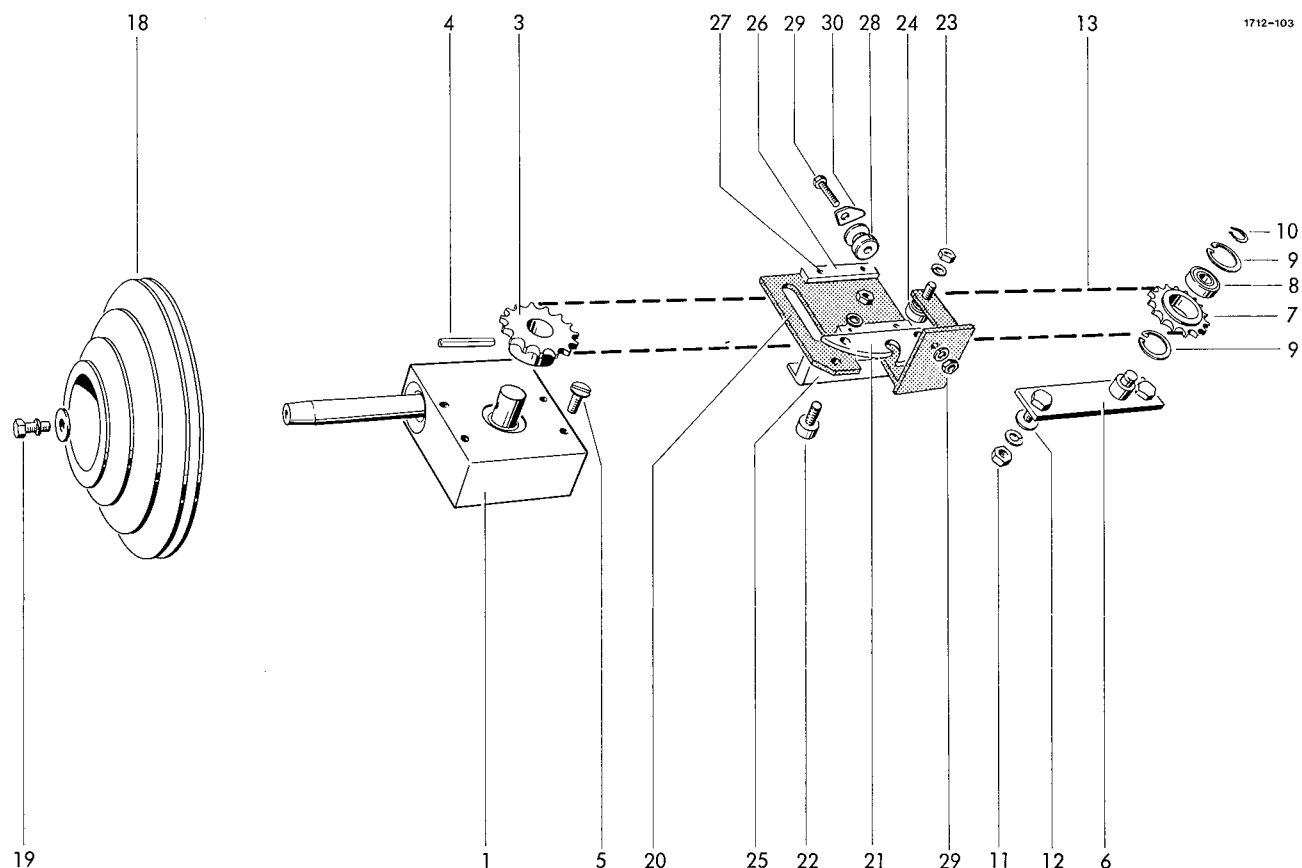
9	0982.40.01.00	knife
10	0901.20.42.00	hex. bolt M 6x10
11	0940.88.06.00	plate spring
12	0910.10.06.00	washer
13	1712.34.04.21	lever
14	0940.65.37.00	plate spring
15	0903.10.18.00	cup head bolt M 6x30
16	0907.56.06.00	safety nut M 6
17	0901.20.66.00	hex. bolt M 8x20
	0911.10.08.00	spring washer

TRIPPING MECHANISM

1	18	1712.34.05.02	trip lever	1
2	19	0924.53.60.00	guide roller	1
2	20	1712.34.05.05	stop lever	1
2	21	0916.10.95.00	split pin	3
1	22	0940.20.48.00	tension spring	2
6	23	0910.10.13.00	washer	3
6	24	0912.10.12.00	circlip	2
4	25	1712.34.05.10	tripping plate	1
4	26	0910.15.14.00	washer	1
4	27	0901.20.70.00	hex. bolt M 8x30	1
1	28	0907.10.08.00	hex. nut M 8	1
1	29	0907.56.08.00	hex. nut M 8	1
1	30	0910.10.08.00	washer	3

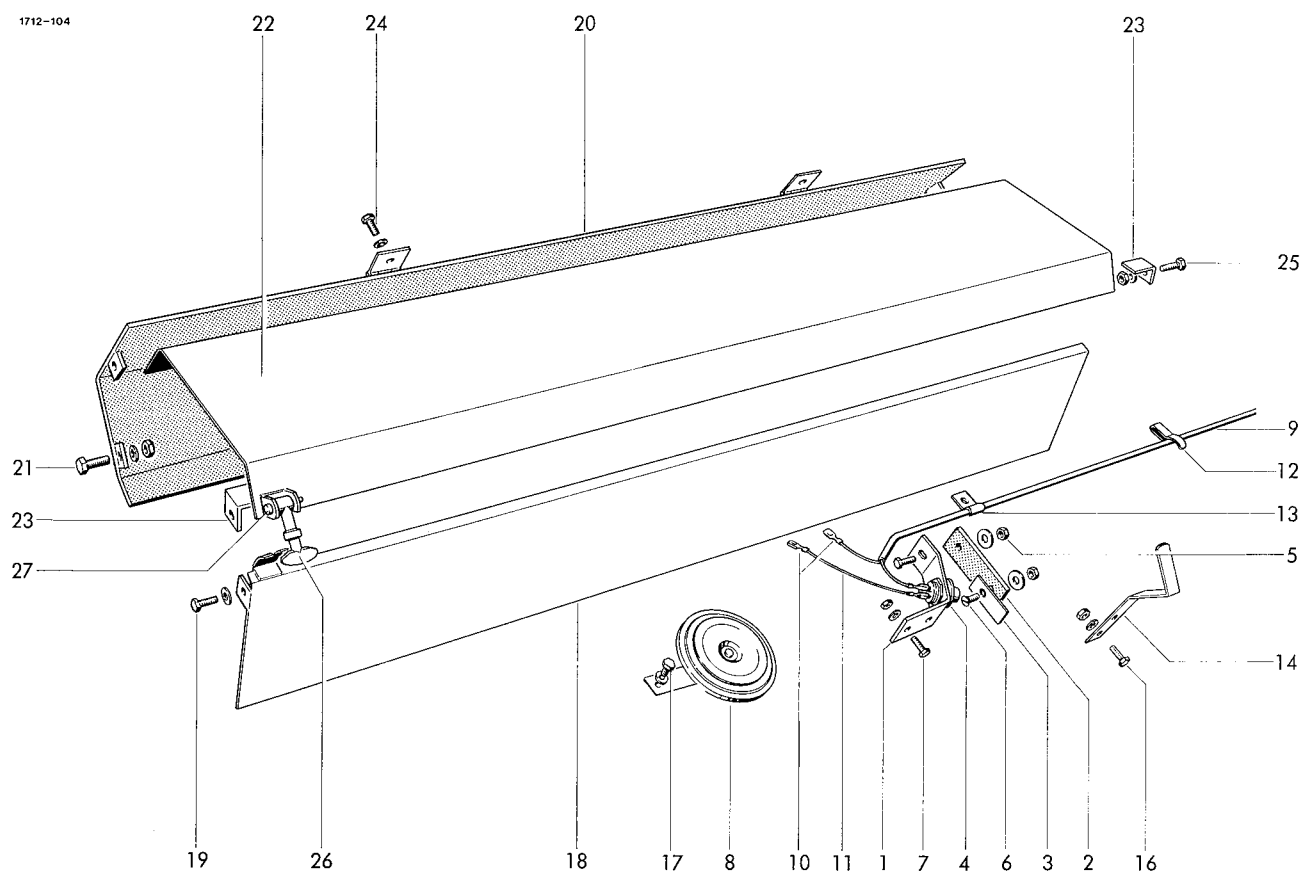
TWINE THROWER Extra equipment

1				
1	31	1712.34.09.01	thrower	1
1	32	0936.99.81.00	roller	1
1	33	0914.15.54.00	rivet	1
1	34	1712.34.09.05	hinge	1
1	35	0901.20.43.00	hex. bolt M 6x12	2
1		0907.10.06.00	hex. nut	2
1		0911.10.06.00	spring washer	2
2	36	0940.64.92.00	plate spring	1
2	37	0901.20.66.00	hex. bolt M 8x20	1
		0907.10.08.00	hex. nut	1
		0910.80.18.00	washer	1
		0911.10.08.00	spring washer	1



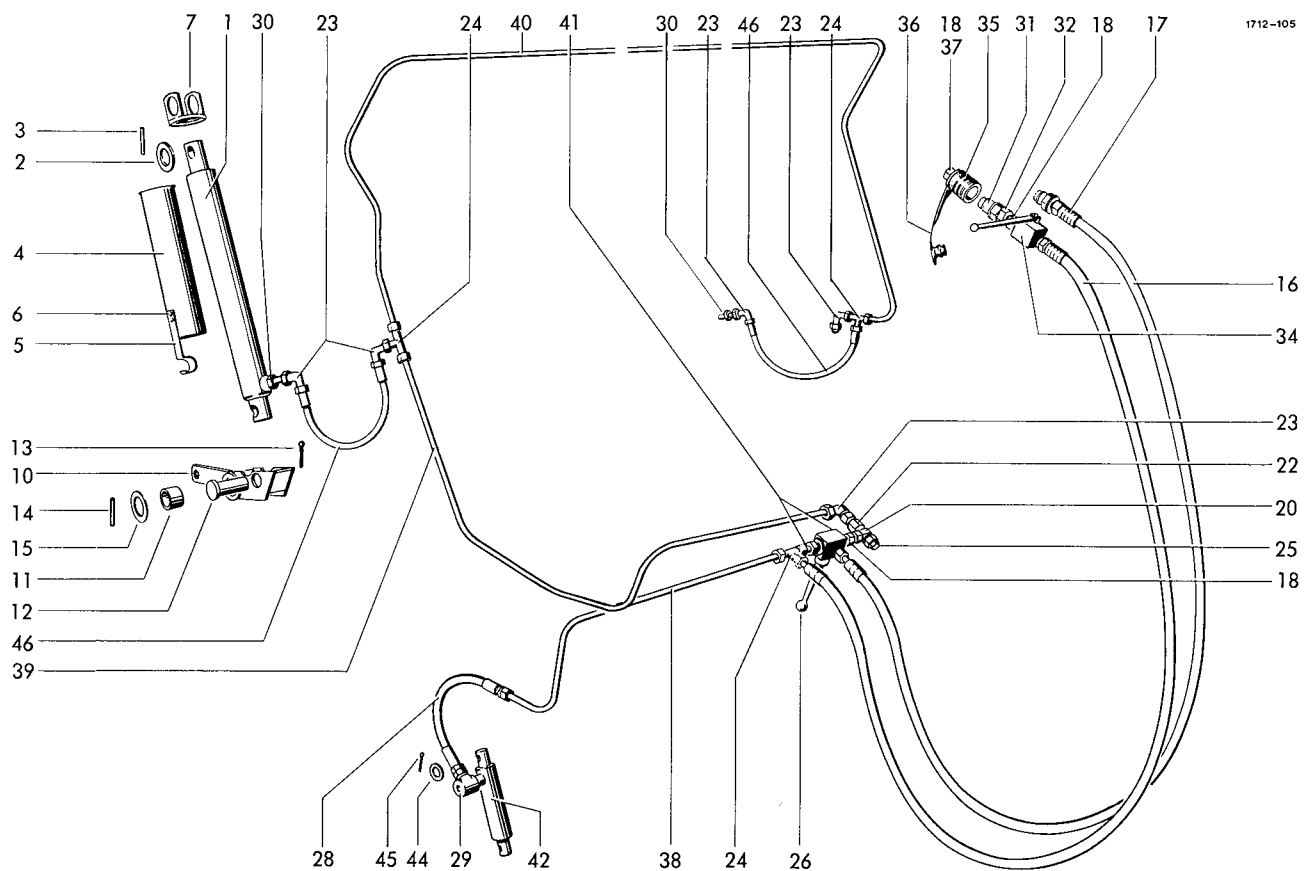
DRIVE

1	0928.30.02.00	gear box with No.2	1	18	0936.99.80.00	stepped pulley	1
2*	0926.76.11.00	breather for No.1	1	19	0901.20.68.00	hex. bolt M 8x25	1
3	0308.26.00.00	chain sprocket	1		0910.40.09.00	washer	1
4	0915.51.58.00	expanding pin	1		0911.10.08.00	spring washer	1
5	0902.50.65.00	countersunk bolt M 8x20	4				
6	1712.34.02.17	tension block	1			SLIDING CARRIAGE	
7-9	1712.34.02.21	chain sprocket cpl.	1				
7	0309.47.00.00	chain sprocket	1	20	1712.34.03.01	base plate	1
8	0922.12.51.00	ball bearing	1	21	1712.34.03.07	impact plate	1
9	0912.15.32.00	circlip	2	22	0924.51.18.00	roller	3
10	0912.10.12.00	circlip	1	23	0907.10.08.00	hex. nut M 8	3
11	0907.10.10.00	hex. nut M 10	2		0911.10.08.00	spring washer	3
	0911.10.10.00	spring washer	2	24	0910.10.08.00	washer	3
12	0328.33.00.00	safety washer	2	25	1712.34.03.17	guide piece	1
13	0934.15.80.00	roller chain	1	26	1712.34.03.14	support plate	2
14*	0934.60.27.00	inner link for No.13	1	27	0915.40.32.00	ribbed nail	4
15*	0934.61.07.00	inner link	1	28	1712.34.03.20	roller	1
16*	0934.60.87.00	cranked link for No.13	1	29	0901.10.22.00	hex. bolt M 6x50	1
17*	0934.15.81.00	connecting link with roller	1		0907.10.06.00	hex. nut	1
					0911.10.06.00	spring washer	1
			30		1712.34.03.23	stop	1



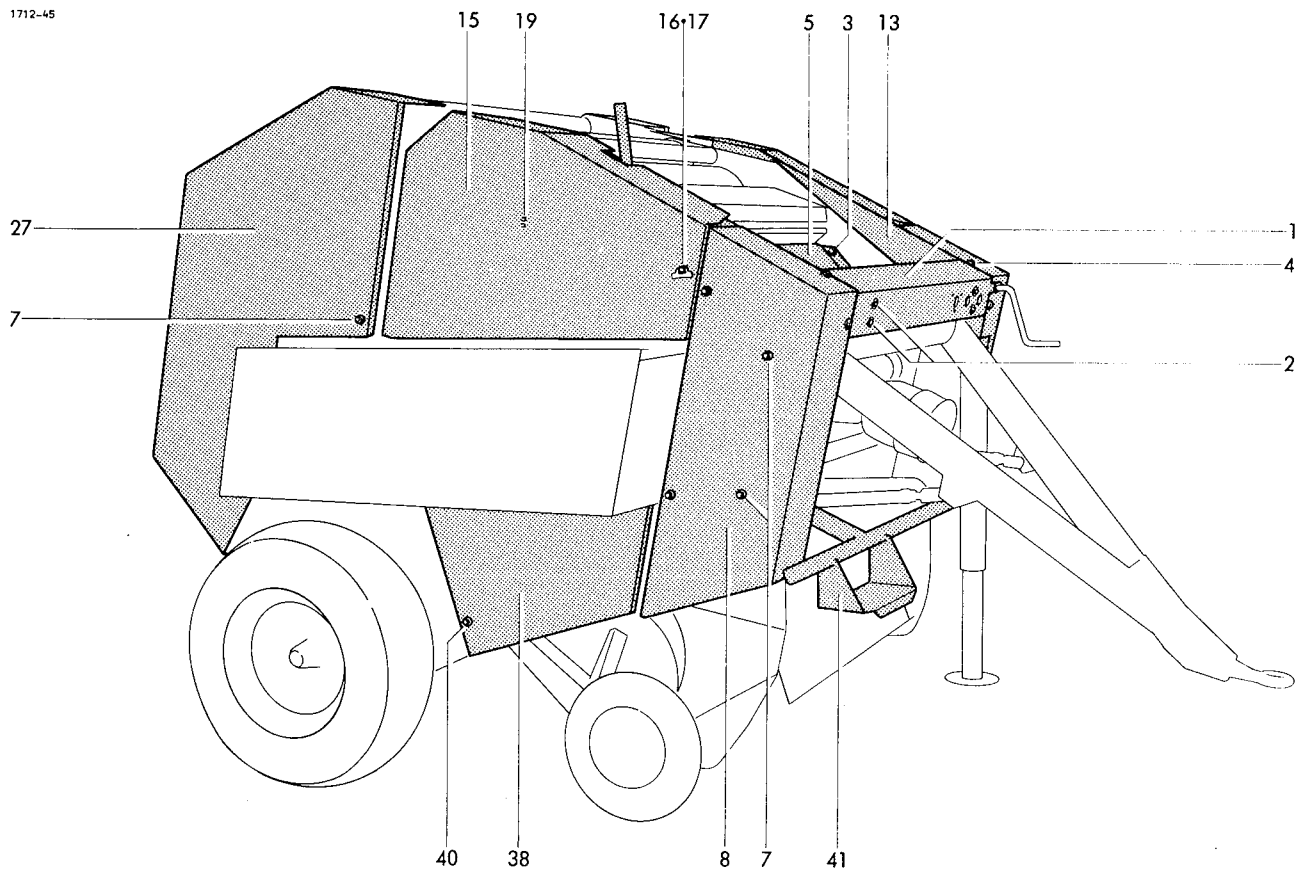
SIGNALING DEVICE

1-6	1712.34.06.01	switch cpl.	1	17	0901.20.61.00	hex. bolt M 8x10	1
1	1712.34.06.02	holder	1		0911.10.08.00	spring washer	1
2	1712.34.06.03	link	1				
3	1712.34.06.04	strip	1			GUARDS	
4	0971.34.01.00	pressure switch	1				
5	0901.20.45.00	hex. bolt M 6x16	1	18	1712.34.08.01	guide shield	1
	0907.10.06.00	hex. nut	1	19	0901.20.66.00	hex. bolt M 8x20	2
	0910.40.06.00	washer	1		0907.10.08.00	hex. nut	2
6	0902.50.44.00	countersunk bolt M 6x16	1		0911.10.08.00	spring washer	2
	0907.10.06.00	hex. nut	1		0910.40.09.00	washer	2
	0910.40.06.00	washer	1	20	1712.34.08.08	cover shield	1
7	0901.20.45.00	hex. bolt M 6x16	2	21	0901.21.08.00	hex. bolt M 10x25	4
	0907.10.06.00	hex. nut	2		0907.10.10.00	hex. nut	4
	0911.10.06.00	spring washer	2		0911.10.10.00	spring washer	4
8	0971.26.80.00	signal horn	1	22	1712.34.08.26	cover	1
9	0972.19.05.00	crank with No.10	1	23	1712.34.08.16	stop	2
10	0972.38.81.00	connector	4	24	0901.20.64.00	hex. bolt M 8x16	2
11	0972.10.01.00	cable cpl. with No.10	1		0907.10.08.00	hex. nut	2
12	0972.62.11.00	chassis clamp	2		0910.80.18.00	washer	2
13	0938.50.08.00	cable clip	2		0911.10.08.00	spring washer	2
14	1712.34.06.29	angle	1	25	0901.21.06.00	hex. bolt M 10x20	1
16	0901.20.42.00	hex. bolt M 6x10	1		0907.10.10.00	hex. nut	1
	0907.10.06.00	hex. nut	1		0911.10.10.00	spring washer	1
	0911.10.06.00	spring washer	1	26	0938.20.40.00	cover lock	1
			27		0918.20.04.00	pin w. washer and split pin	1



HYDRAULIC SYSTEM

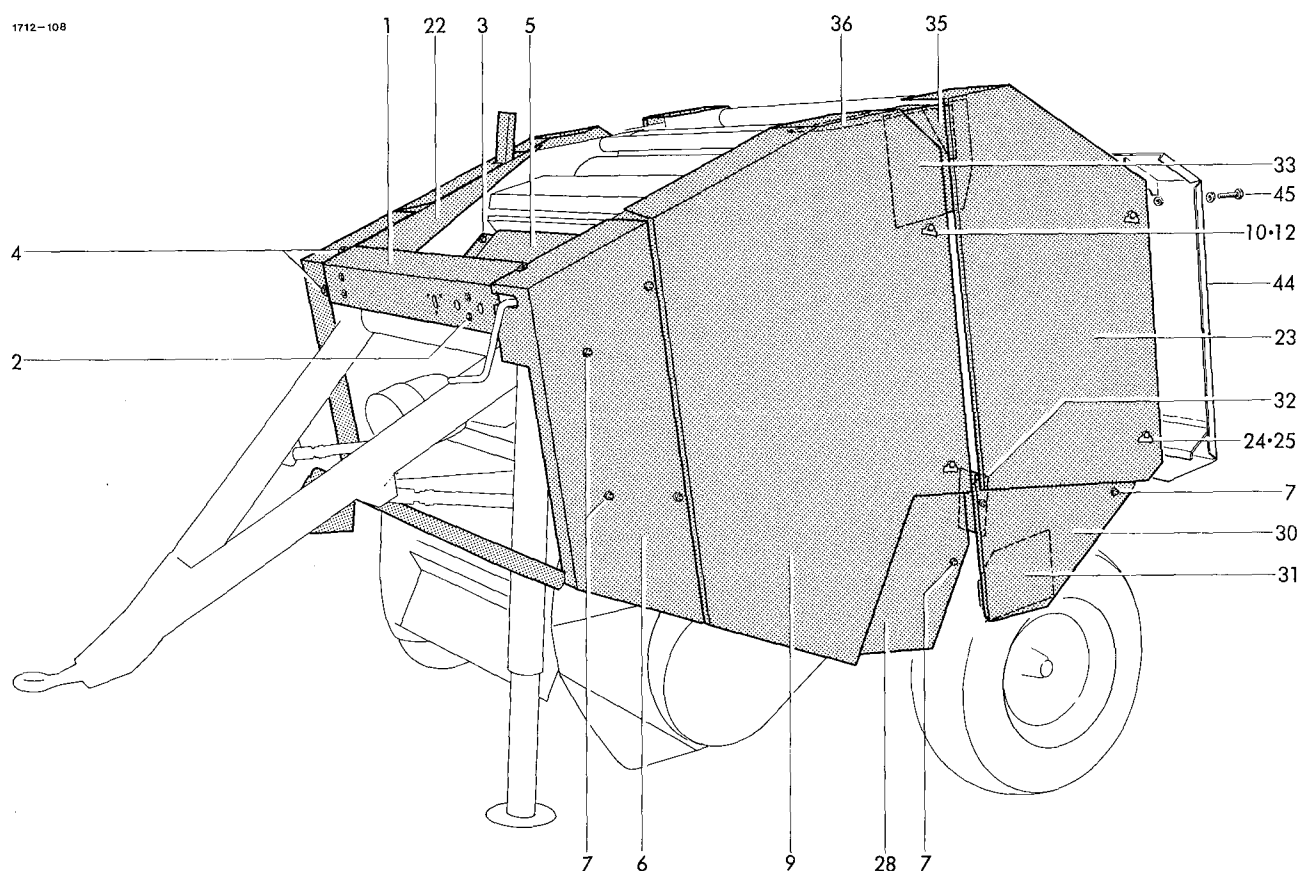
1	0951.11.40.00	hydr. cylinder	2	25	0952.26.01.00	non return valve	1
2	0910.15.30.00	washer	3	26	0952.13.60.00	ball valve	1
3	0915.51.59.00	expanding pin	3	27*	0901.20.66.00	hex. bolt for No.26 M 8x20	2
4-6	1712.46.02.01	support cpl.	2		0911.10.08.00	spring washer	2
4	1712.46.02.02	support	2	28	0954.12.06.00	high pressure hose	1
5	0940.64.74.00	plate spring	2	29	0955.31.16.00	choke-free banjo coupling	1
6	0914.15.47.00	rivet	4	30	0955.60.33.00	straight connection	2
7	1712.46.02.10	support bearing	2	31	0954.31.22.00	coupling plug	1
10+11	1712.46.03.01	tipping bearing	1	32	0955.60.43.00	straight connection with shaft	2
10	1712.46.03.02	whip	1				
11	0920.15.34.00	bush	2	33*	0954.31.80.00	orifice washer for No.29	1
12	0917.52.65.00	pin	1	34	0952.13.03.00	ball valve	1
13	0916.11.36.00	split pin	1	35	0954.31.01.00	coupling sleeve	2
14	0915.51.87.00	expanding pin	1	36	0954.32.10.00	dust plug	2
15	0910.81.66.00	washer	1	37	5633.13.09.06	plate	2
16	0954.12.66.00	high pressure hose	2	38	1712.46.04.31	tubing	1
17	0954.31.20.00	coupling plug	1	39	1712.46.04.32	tubing	1
18	0955.91.10.00	nut	6	40	1712.46.04.33	tubing	1
19*	0955.96.08.00	cutfling ring for No.18	4	41	1712.46.04.34	ubing	2
20	0955.30.41.00	banjo coupling	1	42	0951.11.19.00	hydr. cylinder	1
21*	0925.40.19.00	seal for No.20	1	43*	0951.51.19.00	set of seals for No.42	1
22	0955.42.04.00	straight connection	1	44	0910.10.17.00	washer	1
23	0955.34.04.00	adjustable angle connection	5	45	0916.10.99.00	split pin	1
24	0955.16.67.00	t-connector	3	46	0954.12.17.00	high pressure hose	2



GUARDS

1	1712.51.01.01	shield	1	8	1712.51.03.01	front guard, right	1
2	0901.20.68.00	hex. bolt M 8x25	4	9-12	1712.51.04.01	main cover cpl.	1
	0907.10.08.00	hex. nut	4	9	1712.51.04.02	guard	1
	0910.40.09.00	washer	4	10	0919.48.95.00	cover lock hinged	2
	0911.10.08.00	spring washer	4	11*	0936.73.50.00	PVC-steelrope for No.9	1
3	0901.20.66.00	hex. bolt M 8x25	4	12	0919.48.92.00	holding washer	2
	0907.10.08.00	hex. nut	4	13	1712.51.04.11	guard	1
	0910.40.09.00	washer	4	14*	0905.19.11.00	tapping screw M 6x15	
	0911.10.08.00	spring washer	4			for No.13,22,27,30,31	14
4	0901.20.66.00	hex. bolt M 8x25	4		0910.40.06.00	washer	14
	0907.10.08.00	hex. nut	4	15-20	1712.51.05.01	main cover cpl.	1
	0910.40.09.00	washer	8	15	1712.51.05.02	guard	1
	0911.10.08.00	spring washer	4	16	0919.48.95.00	cover lock hinged	1
5	1712.51.01.08	guard	1	17	0919.48.92.00	holding washer	1
6	1712.51.02.01	front guard, left	1	18*	0940.64.53.00	plate spring for No.15	1
7	0907.10.12.00	hex. nut M 12	15	19	0914.15.30.00	rivet	2
	0910.10.13.00	washer	15	20*	1712.51.05.13	rod for No.15	1

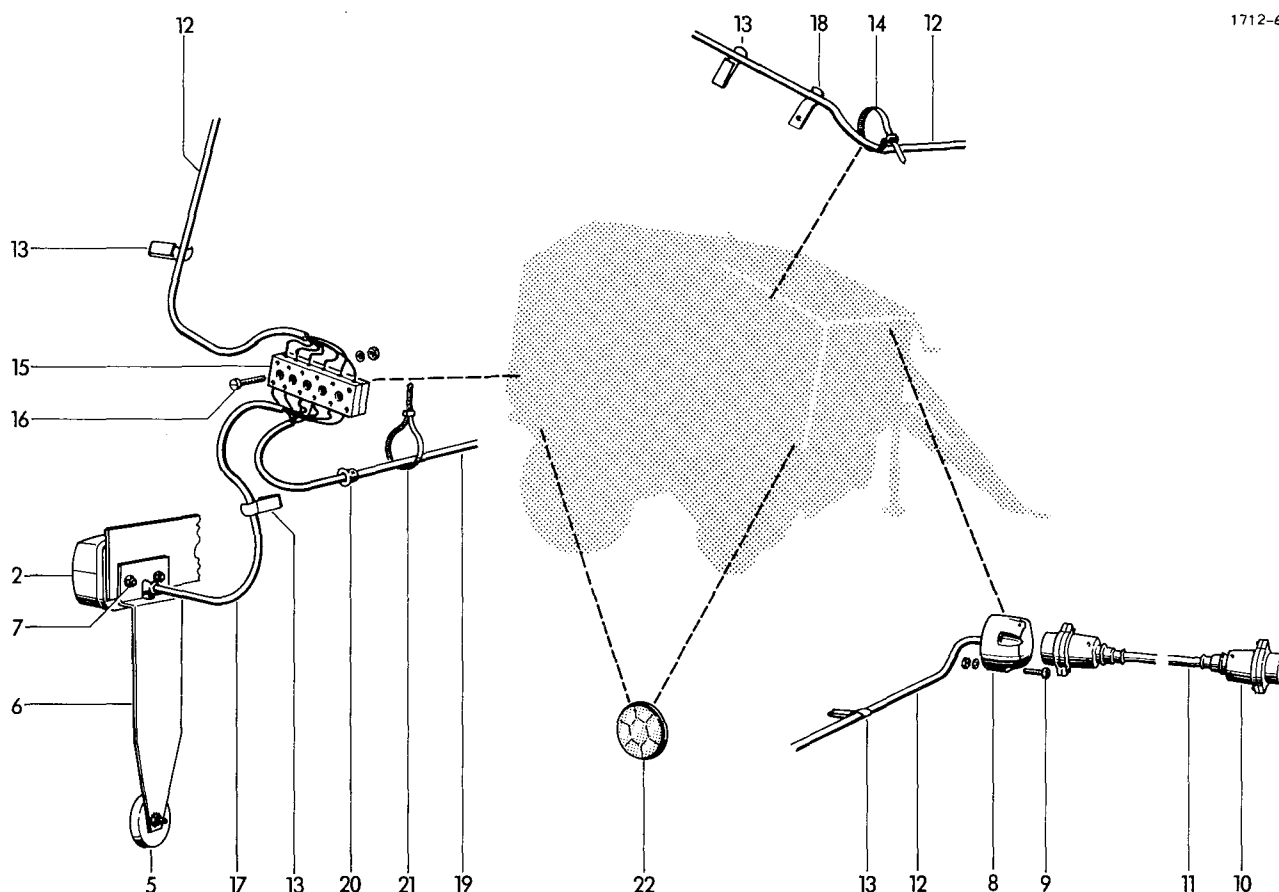
continuation K 11



21*	0910.15.14.00	washer for No.15	1	37*	0902.54.42.00	Countersunk bolt for No.36	
22	1712.51.05.17	guard	1			M 6x12	2
23-25	1712.51.06.01	main cover cpl.	1		0907.10.06.00	hex. nut	2
23	1712.51.06.02	top guard cpl.	1		0911.10.06.00	spring washer	2
24	0919.48.95.00	cover lock hinged	2	38	1712.51.11.01	guard	1
25	0919.48.92.00	holding washer	2	39*	0901.20.66.00	hex. bolt for No.38 M 8x20	1
26*	0936.73.50.00	PVC-steelrope for No.23	1		0907.10.08.00	hex. nut	3
27	1712.51.07.01	guard	1		0910.10.08.00	washer	6
28	1712.51.08.01	guard	1		0911.10.08.00	spring washer	3
30	1712.51.09.01	guard	1	40	0907.10.08.00	hex. nut M 8	1
31	1712.51.09.09	guard	1		0910.10.08.00	washer	1
32	1712.51.09.14	guard	1		0911.10.08.00	spring washer	1
33	1712.51.10.01	guard	1	41	1712.51.12.01	front guard	1
34*	0901.20.45.00	hex. bolt for No.22+23 M6x16	3	42*	0901.20.68.00	hex. bolt for No.11+26 M8x25	2
	0907.10.06.00	hex. nut	3		0907.10.08.00	hex. nut	2
	0911.10.06.00	spring washer	3		0910.40.09.00	washer	4
35	1712.51.10.05	plate	1	43*	0938.90.64.00	hex. cover for No.6,8+27	10
36	1712.51.10.06	top cover	1	44	1712.51.13.01	guard	1
				45	0901.20.71.00	hex. bolt for No.44 M 8x35	2
					0910.10.08.00	washer	2

• = not for South Afrika and Ireland

see also K 10



LIGHTING SYSTEM

1*	0974.10.01.00	light	1	11	0972.16.36.00	cable	1
2	0974.10.02.00	light	1	12	0972.16.57.00	cable	1
3*	0974.20.38.00	bolb for No.1+2	4	13	0972.62.11.00	chassis clamp	15
4*	0974.20.07.00	bolb for No.1+2	2	14	0972.64.02.00	cable clip	1
5	0974.42.01.00	reflector	2	15	0972.51.36.00	connector	1
6	1121.63.01.07	angle	2	16	0902.24.31.00	cheese head bolt M 4x25	2
7	0902.24.45.00	cheese head bolt M 5x16	4		0907.10.04.00	hex. nut	2
	0907.10.05.00	hex. nut	4		0911.10.04.00	spring washer	2
	0911.10.05.00	spring washer	4	17	0972.14.10.00	cable	1
8	0972.46.01.00	socket	1	18	0938.50.08.00	cable clip	1
9	0902.24.52.00	cheese head bolt M 5x35	3	19	0972.14.44.00	cable	1
	0907.10.05.00	hex. nut	3	20	0972.60.01.00	guide	2
	0911.10.05.00	spring washer	3	21	0972.64.03.00	cable clip	5
10+11	0972.16.86.00	connector cable	1	22	0974.46.01.00	reflector	4
10	0972.46.02.00	plug	2				

Part No.	Page No.	Part No.	Page No.	Part No.	Page No.	Part No.	Page No.
0307.66.00.00	D20 12	0901.20.45.00	H40 5	0901.21.47.00	A10 13	0907.10.06.00	C30 29
0307.67.00.00	D20 4	0901.20.45.00	H40 7	0901.21.47.00	C30 17	0907.10.06.00	E20 28
0307.96.00.00	D20 12	0901.20.45.00	K11 34	0901.21.49.00	D20 25	0907.10.06.00	H10 3
0307.97.00.00	D20 4	0901.20.47.00	E20 28	0901.21.50.00	B30 17	0907.10.06.00	H10 14
0308.26.00.00	H30 3	0901.20.54.00	H10 19	0901.21.50.00	C20 6	0907.10.06.00	H20 8
0309.23.00.00	G10 12	0901.20.61.00	H40 17	0901.21.53.00	B40 14	0907.10.06.00	H20 35
0309.23.00.00	G20 12	0901.20.64.00	H40 24	0901.21.53.00	B40 17	0907.10.06.00	H30 29
0309.23.00.00	G30 11	0901.20.66.00	C10 4	0901.21.53.00	C40 9	0907.10.06.00	H40 5
0309.42.00.00	G10 11	0901.20.66.00	C20 4	0901.22.50.00	A10 12	0907.10.06.00	H40 6
0309.42.00.00	G20 11	0901.20.66.00	D20 28	0901.23.50.00	B20 7	0907.10.06.00	H40 7
0309.46.00.00	C10 3	0901.20.66.00	D30 20	0901.30.65.00	D30 7	0907.10.06.00	H40 16
0309.47.00.00	H30 7	0901.20.66.00	G40 6	0901.30.85.00	G30 18	0907.10.06.00	K11 34
0309.56.00.00	E10 8	0901.20.66.00	G50 6	0901.30.85.00	G70 15	0907.10.06.00	K11 37
0312.02.00.00	G10 2	0901.20.66.00	H10 16	0901.30.88.00	D30 14	0907.10.08.00	B30 14
0312.02.00.00	G20 2	0901.20.66.00	H20 5	0901.80.46.00	C20 9	0907.10.08.00	B40 3
0312.02.00.00	G70 2	0901.20.66.00	H20 17	0902.10.70.00	B20 14	0907.10.08.00	B40 39a
0328.33.00.00	H30 12	0901.20.66.00	H20 37	0902.11.09.00	D20 2	0907.10.08.00	B40 39
0328.43.00.00	G40 11	0901.20.66.00	H40 19	0902.24.24.00	B40 52	0907.10.08.00	B50 12
0328.48.00.00	G40 5	0901.20.66.00	J10 27	0902.24.31.00	K20 16	0907.10.08.00	C30 12
0328.48.00.00	G50 5	0901.20.66.00	K10 3	0902.24.45.00	K20 7	0907.10.08.00	D10 15
0328.48.00.00	G60 5	0901.20.66.00	K10 4	0902.24.52.00	K20 9	0907.10.08.00	D30 16
0328.63.00.00	G10 5	0901.20.66.00	K11 39	0902.24.67.00	H10 14	0907.10.08.00	F10 9
0328.63.00.00	G20 5	0901.20.68.00	B40 3	0902.50.44.00	H10 3	0907.10.08.00	H10 16
0328.63.00.00	G70 5	0901.20.68.00	G10 6	0902.50.44.00	H40 6	0907.10.08.00	H20 28
0331.85.00.00	B20 2	0901.20.68.00	G20 6	0902.50.65.00	H30 5	0907.10.08.00	H20 37
0336.59.00.00	D30 3	0901.20.68.00	G70 6	0902.54.42.00	K11 37	0907.10.08.00	H30 23
0338.30.00.00	C20 15	0901.20.68.00	H30 19	0903.10.17.00	C30 29	0907.10.08.00	H40 19
0361.08.00.00	B40 63	0901.20.68.00	K10 2	0903.10.18.00	C30 28	0907.10.08.00	H40 24
0361.08.00.00	H10 4	0901.20.68.00	K11 42	0903.10.18.00	H20 15	0907.10.08.00	K10 2
0361.08.00.00	H10 25	0901.20.70.00	D10 14	0903.10.26.00	H10 15	0907.10.08.00	K10 3
0712.30.00.00	G60 3	0901.20.70.00	E20 6	0903.10.40.00	C30 12	0907.10.08.00	K10 4
0726.15.00.00	B40 38	0901.20.70.00	G60 6	0903.10.70.00	B10 13	0907.10.08.00	K11 39
0761.02.00.00	H10 9	0901.20.70.00	H20 27	0903.10.70.00	C30 32	0907.10.08.00	K11 40
0761.03.00.00	H10 10	0901.20.71.00	K11 45	0903.10.71.00	B10 19	0907.10.08.00	K11 42
0761.03.00.00	H10 18	0901.21.06.00	B10 14	0903.10.71.00	C20 23	0907.10.10.00	B10 10
0901.10.22.00	H30 29	0901.21.06.00	H10 23	0903.10.71.00	C30 36	0907.10.10.00	B10 13
0901.10.61.00	G30 6	0901.21.06.00	H40 25	0903.10.72.00	B50 13	0907.10.10.00	B10 14
0901.10.62.00	D30 16	0901.21.08.00	B10 10	0903.10.81.00	E10 13	0907.10.10.00	B10 16
0901.10.62.00	F10 8	0901.21.08.00	B10 16	0903.10.96.00	C10 14	0907.10.10.00	B10 19
0901.11.05.00	C20 17	0901.21.08.00	B10 24	0903.39.13.00	B50 8	0907.10.10.00	B10 21
0901.11.43.00	D30 10	0901.21.08.00	H20 6	0903.80.11.00	D20 20	0907.10.10.00	B10 22
0901.11.46.00	B40 12	0901.21.08.00	H40 21	0904.70.51.00	C10 6	0907.10.10.00	B10 24
0901.11.47.00	G10 13	0901.21.10.00	B40 54	0904.70.53.00	D30 2	0907.10.10.00	B40 54
0901.11.47.00	G20 13	0901.21.10.00	G10 9	0905.19.11.00	C30 3	0907.10.10.00	B50 13
0901.11.47.00	G30 12	0901.21.10.00	G20 9	0905.19.11.00	C30 6	0907.10.10.00	C10 7
0901.20.42.00	C30 20	0901.21.10.00	G30 9	0905.19.11.00	K10 14	0907.10.10.00	C20 17
0901.20.42.00	H20 10	0901.21.10.00	G40 9	0905.19.12.00	C30 7	0907.10.10.00	C20 23
0901.20.42.00	H40 16	0901.21.10.00	G50 9	0907.10.04.00	B40 52	0907.10.10.00	C30 32
0901.20.43.00	H20 35	0901.21.10.00	G60 9	0907.10.04.00	K20 16	0907.10.10.00	D30 2
0901.20.45.00	B10 7	0901.21.10.00	G70 9	0907.10.05.00	K20 7	0907.10.10.00	H10 23
0901.20.45.00	D20 21	0901.21.11.00	B10 21	0907.10.05.00	K20 9	0907.10.10.00	H20 6
0901.20.45.00	D30 24	0901.21.12.00	B10 22	0907.10.06.00	C30 28	0907.10.10.00	H30 11

Part No.	Page No.	Part No.	Page No.	Part No.	Page No.	Part No.	Page No.
0907.10.10.00	H40 21	0910.10.17.00	J10 44	0910.72.50.00	G10 17	0910.75.17.00	D20 8
0907.10.10.00	H40 25	0910.10.21.00	B40 36	0910.72.50.00	G20 17	0910.75.18.00	D20 8
0907.10.12.00	B30 18	0910.10.21.00	C40 5	0910.72.50.00	G30 16	0910.76.65.00	D20 17
0907.10.12.00	B40 17	0910.15.06.00	H10 12	0910.72.50.00	G40 13	0910.76.75.00	D20 7
0907.10.12.00	B40 29	0910.15.06.00	H10 14	0910.72.50.00	G50 13	0910.80.18.00	H20 37
0907.10.12.00	D30 10	0910.15.09.00	B40 39	0910.72.50.00	G60 13	0910.80.18.00	H40 24
0907.10.12.00	E10 23	0910.15.09.00	D30 20	0910.72.50.00	G70 13	0910.80.30.00	D30 6
0907.10.12.00	K10 7	0910.15.11.00	B10 10	0910.72.52.00	C10 9	0910.80.39.00	D30 11
0907.10.13.00	B40 30	0910.15.11.00	B40 43	0910.72.52.00	G10 17	0910.80.46.00	D30 13
0907.10.16.00	A10 12	0910.15.11.00	C20 17	0910.72.52.00	G20 17	0910.80.92.00	H10 5
0907.10.20.00	B20 6	0910.15.11.00	C30 32	0910.72.52.00	G30 16	0910.81.46.00	B20 11
0907.56.06.00	H20 16	0910.15.14.00	B40 31	0910.72.52.00	G40 13	0910.81.66.00	J10 15
0907.56.08.00	H20 29	0910.15.14.00	H20 26	0910.72.52.00	G50 13	0910.81.97.00	B40 10
0907.60.06.00	H10 22	0910.15.14.00	K11 21	0910.72.52.00	G60 13	0910.84.45.00	B40 8
0907.60.08.00	E20 7	0910.15.22.00	B50 15	0910.72.52.00	G70 13	0910.89.81.00	G30 17
0907.60.10.00	C10 16	0910.15.30.00	J10 2	0910.72.53.00	G10 17	0910.89.81.00	G70 14
0907.60.10.00	C30 37	0910.25.15.00	B50 6	0910.72.53.00	G20 17	0911.10.04.00	B40 52
0907.60.10.00	E10 14	0910.25.26.00	C30 15	0910.72.53.00	G30 16	0911.10.04.00	K20 16
0907.60.12.00	B40 13	0910.40.06.00	D30 22	0910.72.54.00	C10 9	0911.10.05.00	K20 7
0907.60.12.00	B50 9	0910.40.06.00	D30 24	0910.72.54.00	G40 13	0911.10.05.00	K20 9
0907.60.12.00	G10 14	0910.40.06.00	H10 21	0910.72.54.00	G50 13	0911.10.06.00	B10 7
0907.60.12.00	G20 14	0910.40.06.00	H40 5	0910.72.54.00	G60 13	0911.10.06.00	C30 28
0907.60.12.00	G30 13	0910.40.06.00	H40 6	0910.72.54.00	G70 13	0911.10.06.00	C30 29
0907.60.14.00	B50 5	0910.40.06.00	K10 14	0910.73.10.00	D20 24	0911.10.06.00	E20 28
0907.60.16.00	B20 3	0910.40.09.00	D20 28	0910.73.10.00	E10 10	0911.10.06.00	H10 3
0907.60.20.00	B20 8	0910.40.09.00	H30 19	0910.73.10.00	G40 12	0911.10.06.00	H10 14
0907.60.80.00	B40 3a	0910.40.09.00	H40 19	0910.73.10.00	G50 12	0911.10.06.00	H20 8
0907.60.80.00	B40 41	0910.40.09.00	K10 2	0910.73.10.00	G60 12	0911.10.06.00	H20 35
0907.80.08.00	B40 59	0910.40.09.00	K10 3	0910.73.12.00	D20 24	0911.10.06.00	H30 29
0907.81.08.00	C20 10	0910.40.09.00	K10 4	0910.73.12.00	E10 10	0911.10.06.00	H40 7
0908.10.30.00	B20 10	0910.40.09.00	K11 42	0910.73.12.00	G40 12	0911.10.06.00	H40 16
0908.20.18.00	A10 7	0910.40.11.00	B10 16	0910.73.12.00	G50 12	0911.10.06.00	K11 34
0908.31.06.00	D30 22	0910.40.11.00	C10 15	0910.73.12.00	G60 12	0911.10.06.00	K11 37
0908.31.06.00	H10 13	0910.40.11.00	E10 13	0910.73.14.00	G40 12	0911.10.08.00	B30 14
0908.82.04.00	B40 28	0910.60.06.00	C30 20	0910.73.14.00	G50 12	0911.10.08.00	B40 3
0908.88.03.00	A10 4	0910.60.06.00	C30 28	0910.73.14.00	G60 12	0911.10.08.00	B50 12
0910.10.06.00	C30 4	0910.60.10.00	B40 55	0910.73.70.00	G10 16	0911.10.08.00	C10 4
0910.10.06.00	H10 3	0910.60.10.00	C30 36	0910.73.70.00	G20 16	0911.10.08.00	C20 4
0910.10.06.00	H20 12	0910.60.10.00	G10 9	0910.73.70.00	G30 15	0911.10.08.00	C30 12
0910.10.08.00	B40 58	0910.60.10.00	G20 9	0910.73.70.00	G70 12	0911.10.08.00	G10 6
0910.10.08.00	H10 16	0910.60.10.00	G30 9	0910.73.72.00	G10 16	0911.10.08.00	G20 6
0910.10.08.00	H20 30	0910.60.10.00	G40 9	0910.73.72.00	G20 16	0911.10.08.00	G30 6
0910.10.08.00	H30 24	0910.60.10.00	G50 9	0910.73.72.00	G30 15	0911.10.08.00	G40 6
0910.10.08.00	K11 39	0910.60.10.00	G60 9	0910.73.72.00	G70 12	0911.10.08.00	G50 6
0910.10.08.00	K11 40	0910.60.10.00	G70 9	0910.73.74.00	G10 16	0911.10.08.00	G60 6
0910.10.08.00	K11 45	0910.60.13.00	D20 25	0910.73.74.00	G20 16	0911.10.08.00	G70 6
0910.10.13.00	B50 10	0910.69.90.00	D20 11	0910.73.74.00	G30 15	0911.10.08.00	H10 16
0910.10.13.00	C30 17	0910.72.01.00	E10 36	0910.73.74.00	G70 12	0911.10.08.00	H20 5
0910.10.13.00	E10 25	0910.72.03.00	E10 36	0910.74.85.00	D20 18	0911.10.08.00	H20 17
0910.10.13.00	H20 23	0910.72.05.00	E10 19	0910.74.87.00	D20 18	0911.10.08.00	H20 37
0910.10.13.00	K10 7	0910.72.05.00	E10 36	0910.74.88.00	D20 18	0911.10.08.00	H30 19
0910.10.17.00	C40 3	0910.72.50.00	C10 9	0910.75.15.00	D20 8	0911.10.08.00	H30 23

Part No.	Page No.	Part No.	Page No.	Part No.	Page No.	Part No.	Page No.
0911.10.08.00	H40 17	0912.15.32.00	H30 9	0920.14.20.00	C10 2	0926.60.13.00	E20 19
0911.10.08.00	H40 19	0912.15.52.00	E10 34	0920.15.34.00	B40 7	0926.60.15.00	E20 16
0911.10.08.00	H40 24	0912.50.10.00	C20 14	0920.15.34.00	J10 11	0926.60.18.00	E20 20
0911.10.08.00	J10 27	0913.10.50.00	C10 5	0920.19.90.00	B10 5	0926.60.19.00	E20 18
0911.10.08.00	K10 2	0913.12.75.00	D20 5	0920.39.90.00	H20 2	0926.76.11.00	H30 2
0911.10.08.00	K10 3	0914.15.30.00	K10 19	0922.10.28.00	D20 16	0926.76.18.00	D20 23
0911.10.08.00	K10 4	0914.15.47.00	J10 6	0922.10.48.00	D20 6	0926.94.10.00	F10 6
0911.10.08.00	K11 39	0914.15.54.00	H20 33	0922.12.51.00	H30 8	0928.30.02.00	H30 1
0911.10.08.00	K11 40	0915.15.94.00	B30 10	0922.12.56.00	E10 33	0930.13.06.00	D15 1-24
0911.10.10.00	B10 10	0915.40.32.00	H30 27	0922.12.59.00	E10 9	0930.13.07.00	D10 1-26
0911.10.10.00	B10 13	0915.50.91.00	B40 34	0922.12.87.00	G10 8	0930.20.06.00	D10 6
0911.10.10.00	B10 14	0915.51.55.00	B30 9	0922.12.87.00	G20 8	0930.20.14.00	D15 17
0911.10.10.00	B10 16	0915.51.58.00	H30 4	0922.12.87.00	G30 8	0930.20.16.00	D15 6
0911.10.10.00	B10 19	0915.51.59.00	J10 3	0922.12.87.00	G40 8	0930.22.11.00	D10 5
0911.10.10.00	B10 21	0915.51.66.00	B40 25	0922.12.87.00	G50 8	0930.22.12.00	D10 1
0911.10.10.00	B10 22	0915.51.87.00	J10 14	0922.12.87.00	G60 8	0930.22.21.00	D15 1
0911.10.10.00	B10 24	0915.51.89.00	B30 11	0922.12.87.00	G70 8	0930.22.60.00	D15 10
0911.10.10.00	B20 14	0915.52.21.00	D10 17	0922.12.88.00	G40 4	0930.26.03.00	D10 10
0911.10.10.00	B40 54	0915.52.22.00	D15 13	0922.12.88.00	G50 4	0930.26.04.00	D10 13
0911.10.10.00	B50 13	0916.10.68.00	B40 44	0922.12.88.00	G60 4	0930.26.65.00	D10 20
0911.10.10.00	C20 17	0916.10.95.00	H20 21	0922.12.95.00	G10 3	0930.26.66.00	D10 16
0911.10.10.00	C20 23	0916.10.97.00	C40 4	0922.12.95.00	G20 3	0930.26.70.00	D15 16
0911.10.10.00	C30 32	0916.10.97.00	E10 26	0922.12.95.00	G30 3	0930.26.73.00	D15 12
0911.10.10.00	H10 23	0916.10.99.00	B40 32	0922.12.95.00	G70 3	0930.28.01.00	D10 4
0911.10.10.00	H20 6	0916.10.99.00	B40 37	0922.18.03.00	C20 13	0930.28.01.00	D15 4
0911.10.10.00	H30 11	0916.10.99.00	J10 45	0922.18.17.00	C20 20	0930.28.08.00	D10 11
0911.10.10.00	H40 21	0916.11.12.00	B50 16	0922.18.17.00	C20 22	0930.31.04.00	D10 7
0911.10.10.00	H40 25	0916.11.12.00	C40 6	0922.61.43.00	D20 15	0930.31.04.00	D15 7
0911.10.12.00	A10 13	0916.11.18.00	B20 12	0924.10.36.00	D30 8	0930.31.08.00	D15 8
0911.10.12.00	B30 17	0916.11.24.00	C30 16	0924.20.30.00	C20 20+21	0930.34.18.00	C10 1
0911.10.12.00	B40 14	0916.11.28.00	C20 18	0924.20.31.00	C20 21	0930.34.61.00	D15 5
0911.10.12.00	C20 6	0916.11.30.00	B40 11	0924.51.18.00	H30 22	0930.40.26.00	D10 3
0911.10.12.00	C40 9	0916.11.36.00	J10 13	0924.53.60.00	H20 7	0930.40.26.00	D15 3
0911.10.12.00	D20 2	0916.11.99.00	A10 6	0924.53.60.00	H20 19	0930.41.03.00	D10 2
0911.10.12.00	D30 10	0916.21.03.00	B40 46	0925.14.40.00	D20 19	0930.41.03.00	D15 2
0911.10.16.00	A10 12	0917.31.46.00	C40 2	0925.14.55.00	D20 10	0930.42.39.00	D10 19
0912.10.12.00	H20 24	0917.50.83.00	E10 24	0925.40.06.00	D20 22	0930.42.41.00	D15 15
0912.10.12.00	H30 10	0917.52.65.00	J10 12	0925.40.19.00	J10 21	0930.42.42.00	D10 18
0912.10.20.00	B40 64	0918.19.12.00	C30 9	0926.10.05.00	D10 9	0930.42.44.00	D15 14
0912.10.20.00	H10 6	0918.19.12.00	C30 33	0926.10.08.00	D15 11	0930.44.17.00	D10 24
0912.10.20.00	H10 26	0918.20.04.00	H40 27	0926.10.10.00	D10 8	0930.44.19.00	D15 22
0912.10.25.00	E10 35	0919.48.92.00	H10 8	0926.10.10.00	D15 9	0930.44.76.00	D10 23
0912.10.26.00	E10 18	0919.48.92.00	K10 12	0926.60.02.00	E20 1	0930.44.78.00	D15 21
0912.10.30.00	C10 8	0919.48.92.00	K10 17	0926.60.03.00	E20 8-13	0930.45.07.00	D15 18
0912.10.30.00	G10 18	0919.48.92.00	K11 25	0926.60.04.00	E20 8	0930.45.09.00	D10 21
0912.10.30.00	G20 18	0919.48.94.00	H10 7	0926.60.05.00	E20 9	0930.45.21.00	D10 25
0912.10.30.00	G40 14	0919.48.95.00	K10 10	0926.60.06.00	E20 10	0930.45.23.00	D15 23
0912.10.30.00	G50 14	0919.48.95.00	K10 16	0926.60.07.00	E20 11	0930.45.31.00	D15 19
0912.10.30.00	G60 14	0919.48.95.00	K11 24	0926.60.07.00	E20 24	0930.47.60.00	D10 12
0912.10.35.00	B40 9	0919.71.10.00	C40 7	0926.60.08.00	E20 12	0930.49.02.00	D10 26
0912.10.40.00	D20 14	0920.13.25.00	E10 16	0926.60.09.00	E20 13	0930.49.02.00	D15 24
0912.10.40.00	E10 11	0920.13.25.00	E10 29	0926.60.11.00	E20 14	0930.50.40.00	D10 22

Part No.	Page No.	Part No.	Page No.	Part No.	Page No.	Part No.	Page No.
0930.50.40.00	D15 20	0940.25.45.00	B50 7	0944.92.41.00	B30 20	0972.38.81.00	H40 10
0934.15.80.00	H30 13	0940.52.25.00	C20 16	0944.92.70.00	B30 6	0972.46.01.00	K20 8
0934.15.81.00	H30 17	0940.64.53.00	K10 18	0944.92.71.00	B30 5	0972.46.02.00	K20 10
0934.16.32.00	C10 10	0940.64.74.00	J10 5	0944.92.90.00	B30 16	0972.51.36.00	K20 15
0934.18.13.00	E10 1	0940.64.92.00	H20 36	0944.92.94.00	B30 8	0972.60.01.00	K20 20
0934.18.15.00	E10 4	0940.65.37.00	H20 14	0944.92.96.00	B30 13	0972.62.11.00	E20 22
0934.18.21.00	E10 6	0940.88.06.00	H20 11	0944.92.97.00	B30 12	0972.62.11.00	H40 12
0934.18.38.00	E10 5	0940.96.01.00	B40 16	0944.92.98.00	B30 15	0972.62.11.00	K20 13
0934.18.76.00	E10 7	0940.96.01.00	C40 8	0944.93.41.00	B30 7	0972.62.12.00	E20 23
0934.60.27.00	H30 14	0942.10.04.00	A10 1-11	0944.94.01.00	B30 1-16	0972.64.01.00	E20 21
0934.60.87.00	H30 16	0942.20.20.00	A10 9	0948.20.02.00	F10 1	0972.64.02.00	K20 14
0934.60.88.00	C10 12	0942.20.21.00	A10 8	0951.11.19.00	J10 42	0972.64.03.00	K20 21
0934.60.90.00	E10 3	0942.21.40.00	A10 2	0951.11.40.00	J10 1	0974.10.01.00	K20 1
0934.61.07.00	H30 15	0942.22.28.00	A10 11	0951.51.19.00	J10 43	0974.10.02.00	K20 2
0934.64.88.00	C10 11	0942.22.65.00	A10 10	0952.13.03.00	J10 34	0974.20.07.00	K20 4
0934.65.07.00	E10 2	0942.22.89.00	A10 3	0952.13.60.00	J10 26	0974.20.38.00	K20 3
0934.96.01.00	E10 17	0942.24.95.00	A10 5	0952.26.01.00	J10 25	0974.42.01.00	K20 5
0934.96.01.00	E10 30	0942.30.67.00	A10 1	0954.12.06.00	J10 28	0974.46.01.00	K20 22
0934.99.01.00	C10 13	0942.40.01.00	A10 1-10a	0954.12.17.00	J10 46	0980.12.10.00	F10 2
0934.99.01.00	E10 12	0942.40.03.00	A10 1	0954.12.66.00	J10 16	0980.14.03.00	F10 2
0935.11.02.00	C30 27	0942.40.11.00	A10 1	0954.31.01.00	J10 35	0980.20.13.00	F10 4
0935.11.04.00	B40 40	0942.40.13.00	A10 1	0954.31.20.00	J10 17	0980.22.13.00	F10 3
0935.13.01.00	B40 53	0942.40.21.00	A10 2	0954.31.22.00	J10 31	0980.22.17.00	F10 5
0935.13.03.00	C30 35	0942.40.31.00	A10 5	0954.31.80.00	J10 33	0982.40.01.00	H20 9
0936.45.16.00	B40 47	0942.40.41.00	A10 8	0954.32.10.00	J10 36	0994.10.31.00	F10 7
0936.49.50.00	B40 61	0942.40.43.00	A10 9	0954.60.05.00	E20 27	0994.80.17.00	D30 17
0936.73.50.00	K10 11	0942.40.51.00	A10 10	0954.61.85.00	E20 5	0994.80.18.00	D30 18
0936.73.50.00	K11 26	0942.40.60.00	A10 3	0954.66.19.00	E20 15	0995.10.01.00	B40 49
0936.90.03.00	B40 60	0942.40.66.00	A10 4	0955.10.20.00	E20 26	0995.10.33.00	B40 51
0936.99.80.00	H30 18	0942.40.71.00	A10 7	0955.10.21.00	E20 25	0995.10.34.00	B40 50
0936.99.81.00	H20 32	0942.40.76.00	A10 6	0955.16.67.00	J10 24	1121.42.02.06	C20 8
0937.17.19.00	C30 31	0944.10.60.00	A10 14-16	0955.30.41.00	J10 20	1121.42.02.31	C20 19
0937.19.03.00	C30 10	0944.11.23.00	A10 22-24	0955.31.16.00	J10 29	1121.42.02.36	C20 12
0937.28.99.00	C30 22	0944.20.23.00	A10 19	0955.34.04.00	J10 23	1121.63.01.07	K20 6
0937.51.37.00	B20 9	0944.20.60.00	A10 14	0955.34.43.00	E20 4	1701.12.03.01	D20 27
0937.51.38.00	B20 9	0944.20.71.00	A10 17	0955.42.04.00	J10 22	1702.12.92.26	D20 13
0938.20.40.00	H40 26	0944.21.23.00	A10 22	0955.60.33.00	J10 30	1702.51.01.03	D30 19
0938.50.08.00	H40 13	0944.30.17.00	A10 20	0955.60.43.00	J10 32	1705.14.02.10	G10 10
0938.50.08.00	K20 18	0944.30.60.00	A10 15	0955.91.02.00	E20 2	1705.14.02.10	G20 10
0938.90.64.00	K11 43	0944.30.68.00	A10 18	0955.91.10.00	J10 18	1705.14.02.10	G30 10
0938.96.30.00	C30 25	0944.30.86.00	A10 23	0955.96.01.00	E20 3	1712.02.51.07	A10 13
0938.98.40.00	B50 11	0944.51.30.00	A10 21	0955.96.08.00	E20 17	1712.03.00.00	B10 1
0940.10.71.00	H10 11	0944.51.64.00	A10 16	0955.96.08.00	J10 19	1712.03.02.41	B10 23
0940.10.71.00	H10 20	0944.52.20.00	A10 24	0971.26.80.00	H40 8	1712.03.05.01	B10 15
0940.12.70.00	B40 57	0944.80.22.00	A10 16-18	0971.34.01.00	H40 4	1712.04.00.00	B10 2
0940.16.11.00	E10 22	0944.80.23.00	A10 19-21	0972.10.01.00	H40 11	1712.04.07.01	B10 17
0940.20.48.00	H20 22	0944.90.61.00	C30 14	0972.14.10.00	K20 17	1712.04.07.02	B10 18
0940.22.30.00	C30 30	0944.91.50.00	B30 1	0972.14.44.00	K20 19	1712.05.01.01	B20 1
0940.22.77.00	B40 48	0944.91.71.00	B30 2	0972.16.36.00	K20 11	1712.05.02.01	B20 4-6
0940.25.21.00	B40 5	0944.92.03.00	B30 4	0972.16.57.00	K20 12	1712.05.02.02	B20 4
0940.25.21.00	C30 34	0944.92.38.00	B30 3	0972.16.86.00	K20 10+11	1712.05.02.06	B20 5
0940.25.45.00	B40 15	0944.92.40.00	B30 19	0972.19.05.00	H40 9	1712.05.03.06	B20 13

Part No.	Page No.	Part No.	Page No.	Part No.	Page No.	Part No.	Page No.
1712.07.01.01	B10 3	1712.14.03.01	G70 7	1712.34.03.01	H30 20	1712.46.04.33	J10 40
1712.07.01.08	B10 6	1712.14.04.01	G10 10-14	1712.34.03.07	H30 21	1712.46.04.34	J10 41
1712.07.02.01	B10 4	1712.14.04.09	G10 15	1712.34.03.14	H30 26	1712.51.01.01	K10 1
1712.07.03.01	B10 8	1712.14.04.09	G20 15	1712.34.03.17	H30 25	1712.51.01.08	K10 5
1712.07.03.02	B10 9	1712.15.04.01	G20 10-14	1712.34.03.20	H30 28	1712.51.02.01	K10 6
1712.08.01.01	B40 1	1712.15.05.01	G20 1	1712.34.03.23	H30 30	1712.51.03.01	K10 8
1712.08.01.14	B40 2	1712.16.02.01	G30 2+3	1712.34.04.21	H20 13	1712.51.04.01	K10 9-12
1712.08.01.19	B40 4	1712.16.04.01	G30 10-13	1712.34.05.02	H20 18	1712.51.04.02	K10 9
1712.08.02.01	B40 6	1712.16.04.09	G30 14	1712.34.05.05	H20 20	1712.51.04.11	K10 13
1712.08.02.25	B40 18	1712.16.06.01	G30 1	1712.34.05.10	H20 25	1712.51.05.01	K10 15-20
1712.08.03.11	B40 23	1712.17.02.01	G40 2	1712.34.06.01	H40 1-6	1712.51.05.02	K10 15
1712.08.03.12	B40 24	1712.17.02.01	G50 2	1712.34.06.02	H40 1	1712.51.05.13	K10 20
1712.08.04.01	B40 26-32	1712.17.02.01	G60 2	1712.34.06.03	H40 2	1712.51.05.17	K11 22
1712.08.04.02	B40 26	1712.17.02.05	G40 3	1712.34.06.04	H40 3	1712.51.06.01	K11 23-25
1712.08.04.06	B40 27	1712.17.02.05	G50 3	1712.34.06.29	H40 14	1712.51.06.02	K11 23
1712.08.04.17	B40 33	1712.17.04.01	G40 10	1712.34.07.01	H10 17-22	1712.51.07.01	K11 27
1712.08.05.01	B40 35	1712.17.04.01	G70 10	1712.34.07.02	H10 17	1712.51.08.01	K11 28
1712.08.05.18	B40 42	1712.17.05.01	G40 1a	1712.34.07.12	H10 24	1712.51.09.01	K11 30
1712.08.05.26	B40 45	1712.17.05.06	G20 1a	1712.34.08.01	H40 18	1712.51.09.09	K11 31
1712.08.05.35	B40 56	1712.17.05.06	G40 1b	1712.34.08.08	H40 20	1712.51.09.14	K11 32
1712.08.05.44	B40 62	1712.17.05.06	G50 1a	1712.34.08.16	H40 23	1712.51.10.01	K11 33
1712.09.01.01	B10 11-13	1712.17.05.06	G70 1a	1712.34.08.26	H40 22	1712.51.10.05	K11 35
1712.09.01.02	B10 11	1712.17.06.01	G40 1	1712.34.09.01	H20 31	1712.51.10.06	K11 36
1712.09.01.02	B10 20	1712.18.04.01	G50 10	1712.34.09.05	H20 34	1712.51.11.01	K11 38
1712.09.01.08	B10 12	1712.18.04.05	G50 11	1712.42.01.01	C20 1	1712.51.12.01	K11 41
1712.12.01.00	D20 1-24	1712.18.04.05	G60 11	1712.42.01.25	C20 2	1712.51.13.01	K11 44
1712.12.01.01	D20 1	1712.18.06.01	G60 1	1712.42.01.28	C20 3	1712.92.00.00	B50 1-17
1712.12.01.10	D20 3	1712.19.04.01	G60 10	1712.42.01.35	C20 5	1712.92.01.01	B50 1
1712.12.01.16	D20 9	1712.19.05.01	G50 1	1712.42.02.01	C20 7	1712.92.01.08	B50 2
1712.12.03.09	D30 5	1712.20.04.05	G70 11	1712.42.02.12	C20 11-14	1712.92.01.16	B50 3
1712.12.03.13	D30 9	1712.20.05.01	G70 1	1712.42.02.13	C20 11	1712.92.01.17	B50 4
1712.12.03.18	D30 12	1712.25.05.10	E10 8+9	1712.42.04.01	C30 1	1712.92.02.01	B50 14
1712.12.03.24	D30 15	1712.25.07.01	E10 15-17	1712.42.04.13	C30 2	1712.92.02.12	B50 17
1712.12.03.28	D30 1	1712.25.07.02	E10 15	1712.42.05.05	C30 5	3203.01.04.11	E10 21
1712.12.03.36	D30 4	1712.25.07.07	E10 15+16	1712.42.06.01	C30 8	5633.13.09.06	J10 37
1712.12.52.08	D30 21	1712.25.07.14	E10 20	1712.42.08.01	C30 13		
1712.12.52.14	D30 23	1712.25.07.24	E10 27	1712.42.09.01	C30 18		
1712.12.92.00	D20 1-24	1712.25.08.01	E10 28-30	1712.42.09.02	C30 19		
1712.14.01.01	G10 1	1712.25.08.02	E10 28	1712.42.11.01	C30 11		
1712.14.02.01	G10 2+3	1712.25.08.07	E10 28+29	1712.42.90.00	C30 21-33		
1712.14.02.01	G20 2+3	1712.25.08.11	E10 31	1712.42.90.01	C30 21		
1712.14.02.01	G70 2+3	1712.25.09.01	E10 32-34	1712.42.90.10	C30 23		
1712.14.02.05	G10 4	1712.25.09.02	E10 32	1712.42.90.11	C30 24		
1712.14.02.05	G20 4	1712.27.01.01	H10 1	1712.42.90.13	C30 26		
1712.14.02.05	G30 4	1712.27.01.12	H10 2	1712.43.01.01	C40 1		
1712.14.02.05	G70 4	1712.29.00.00	G30 2	1712.46.02.01	J10 4-6		
1712.14.03.01	G10 7	1712.34.01.01	H20 1	1712.46.02.02	J10 4		
1712.14.03.01	G20 7	1712.34.01.15	H20 2+3	1712.46.02.10	J10 7		
1712.14.03.01	G30 7	1712.34.01.17	H20 3	1712.46.03.01	J10 10+11		
1712.14.03.01	G40 7	1712.34.01.20	H20 4	1712.46.03.02	J10 10		
1712.14.03.01	G50 7	1712.34.02.17	H30 6	1712.46.04.31	J10 38		
1712.14.03.01	G60 7	1712.34.02.21	H30 7-9	1712.46.04.32	J10 39		