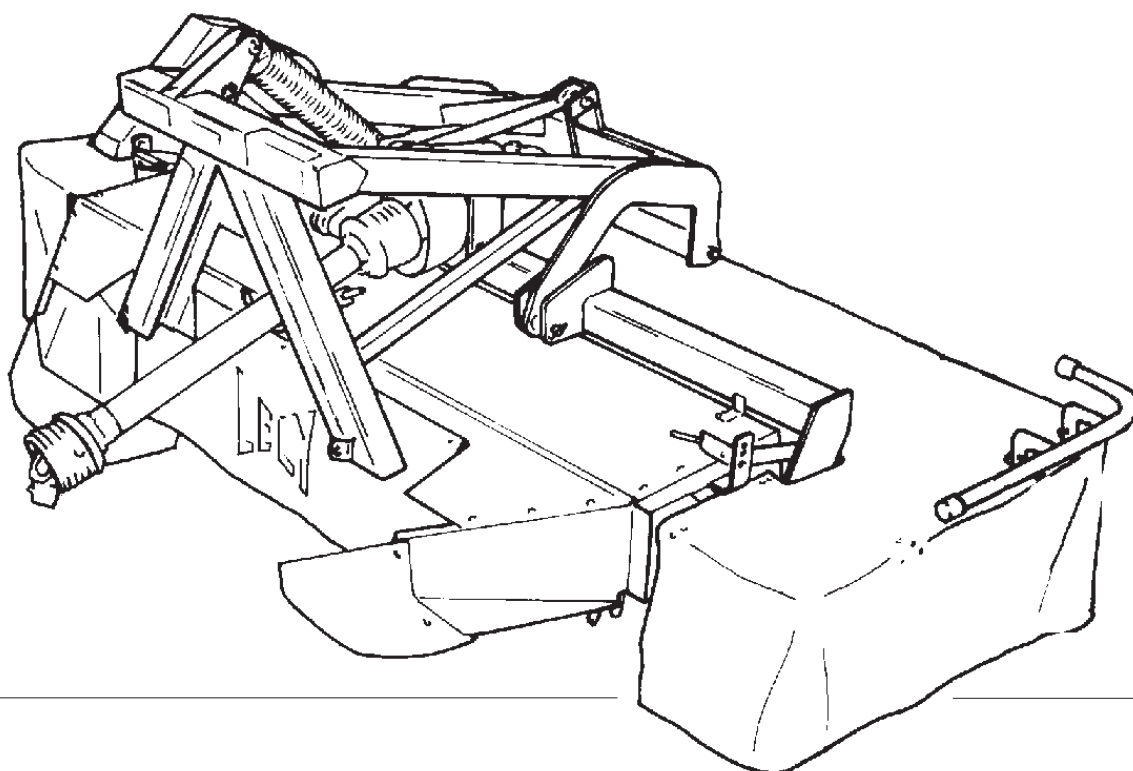


LELY

HIGH - TECH
IN AGRICULTURE

ONDERDELENLIJST
PARTS LIST
LISTE DE PIECES DE RECHANGE
ERSATZTEILLISTE

SPLENDIMO 280 FC



SPLENDIMO	type number type number numéro de type Typennummer	vanaf serienummer as from serial number après numéro série ab Seriennummer
280 FC	4-1227-0025-1	3018100



ONDERDELEN

Bij het bestellen van onderdelen is het belangrijk dat u het type- en serienummer van uw machine opgeeft.

Gebruik alleen originele LELY-onderdelen.

SPARE PARTS

When ordering spare parts, it is important that you indicate the type and serial number of your machine.

Use only genuine LELY parts.

PIECES DE RECHANGE

En commandant des pièces de rechange il importe que vous indiquiez les numéros de type et de série de votre machine.

N'utiliser que des pièces d'origines LELY.

ERSATZTEILE

Beim Bestellen von Ersatzteilen ist es wichtig, daß Sie die Typ- und Seriennummer Ihrer Maschine angeben.

Nur Original-LELY-Ersatzteile verwenden.

Typ- und Seriennummer in nebenstehende Abbildung eintragen. Bei künftigen Bestellungen haben Sie die Nummer dann griffbereit.

Vul het type- en serienummer hieronder in.

Bij toekomstige onderdelenbestellingen heeft u de nummers dan bij de hand.

Complete the box below with the type and serial number.

This is an easy reference with a view to future spare parts ordering.

Veillez noter, ci-dessous, les numéros de type et de serie.

Ceci est important pour toutes commandes de pièces de rechange.

LELY	LELY INDUSTRIES NV 3147 PA MAASSLUIS THE NETHERLANDS	CE
	kg	
Type		
Ser.Nr.		

Verklaring van de in de onderdelenlijst gebruikte tekens.

Explanation of signs used in the parts list.

Explication des signes qui figurent dans la liste des pièces.

Erklärung der in der Ersatzteilliste verwendeten Zeichen.

[R] = RECHTSE UITVOERING
RH VERSION

[L] = LINKSE UITVOERING
LH VERSION

Onder rechtse of linkse uitvoering wordt de plaats van het onderdeel verstaan, gezien van de achterzijde van de machine.

By RH or LH version the position of the part is meant, seen from the rear of the machine

[RD] = RECHTSOM DRAAIENDE UITVOERING
RH ROTATING VERSION

[LD] = LINKSOM DRAAIENDE UITVOERING
LH ROTATING VERSION

Onder rechtsom of linksom draaiende uitvoering wordt de draairichting van het onderdeel verstaan, gezien van de bovenzijde van de machine.

By RH or LH rotating version the sense of rotating of the part is meant, seen from the top of the machine.

[x] = ONDERDEEL WORDT NIET GETOOND
PART IS NOT SHOWN

Bijvoorbeeld linkse uitvoering overeenkomstig de wel getekende rechtse uitvoering.

E.g. : LH version is similar to the RH version, which is actually shown.

[#] = NIET LOS LEVERBAAR
NOT AVAILABLE SEPARATELY

~ = AANTAL (INDIEN NODIG) AFHANKELIJK VAN INBOUWMAAT
QUANTITY (IF APPLICABLE) DEPENDING UPON ASSEMBLY

[>|<] = OLIEKEERRING

OIL SEAL

[T+T] = TANDWIELSET

PAIR OF GEARS

[D+D] = VULRINGSET

SHIM SET

[A+A] = SET AFDICHTINGSRINGEN

SET OF SEALING RINGS

VERSION DROITE
RECHTE AUSFÜHRUNG

VERSION GAUCHE
LINKE AUSFÜHRUNG

Par version droite ou gauche on entend la position de la pièce, vue de l'arrière de la machine.

Die Verweisungen "rechte Ausführung" oder "linke Ausführung" geben die Position des Teils, von der Hinterseite der Maschine aus gesehen, an.

VERSION ROTATION A DROITE
RECHTSUMDREHENDE AUSFÜHRUNG

VERSION ROTATION A GAUCHE
LINKSUMDREHENDE AUSFÜHRUNG

Version rotation à droit: ceci correspond au sens de rotation de la pièce, vue du dessus la machine.

Mit diesen Verweisungen wird die Drehrichtung des Teils von der Oberseite der Maschine aus gesehen, angegeben.

PIECE N'EST PAS MONTREE
TEIL WIRD NICHT GEZEIGT

Exemple : la version gauche est représentée. La version droite correspond à la version gauche, mais n'est pas représentée.

Beispiel : die linke Ausführung entspricht der effektiv gezeigten Rechten.

VENDU EN KIT UNIQUEMENT
NICHT SEPARAT LIEFERBAR

QUANTITE (SI NÉCESSAIRE) EN FONCTION DU MONTAGE
ANZAHL VOM EINBAUMASS ABHÄNGIG (WENN ERFORDERLICH)

ETANCHEITE

ÖLDICHTUNGSRING

JEU D'ENGRENAGES

ZAHNRÄDERSATZ

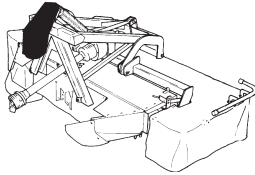
JEU D'ÉPAISSEURS

PASSSCHEIBENSATZ

JEU D'ANNEAUX D'ETANCHEITE

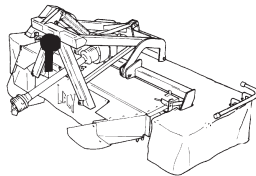
DICHTUNGSRINGENSATZ

SPLENDIMO 280 FC



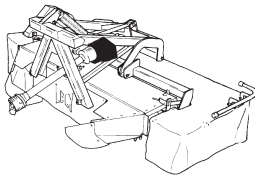
Snaaraandrijving
V-belt drive
Entraînement à courroies
Keilriemenantrieb

01



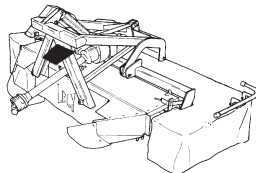
Tandwielkast eerste maaielement
Gearbox of first cutting unit
Boîte d'engrenages
première unité de fauchage
Getriebe der ersten Mäh-Einheit

02



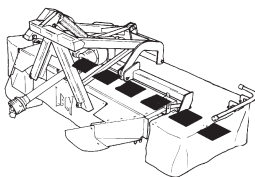
Tandwielkast aandrijving
Gearbox transmission
Boîte d'engrenages Entraînement
Getriebe Antrieb

03



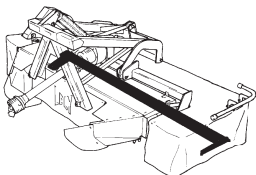
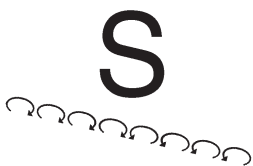
Eerste maaielement
First cutting unit
Première unité de fauchage
Erste Mäh-Einheit

04



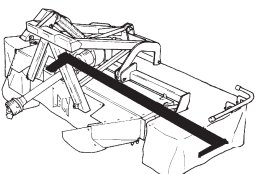
Maaielementen
Cutting units
Unités de fauchage
Mäh-Einheiten

05



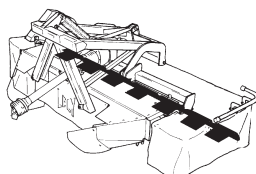
Maaibalk + slijtsloffen
Cutter bar + wear skids
Barre de coupe + patins d'usure
Mähbalken + Verschleißkufen

06



Maaibalk + slijtsloffen
Cutter bar + wear skids
Barre de coupe + patins d'usure
Mähbalken + Verschleißkufen

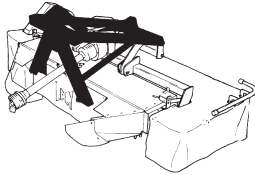
07



Glijtsloffen + maaibalkbescherming
Skids + cutter bar protection
Patins + protection-barre
Kufen + Mähwerkschutz

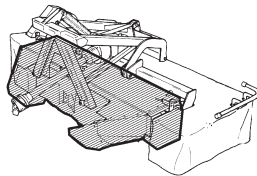
08

SPLENDIMO 280 FC



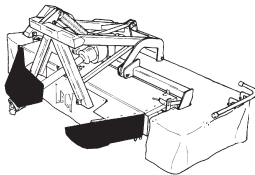
Driepuntsbok + hydraulische cilinder
Headstock + hydraulic ram
Tête d'attelage + vérin hydraulique
Dreipunktturm + Hydraulikzylinder

09



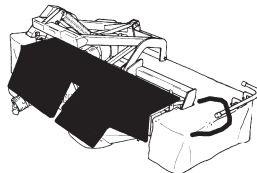
Kneuzerkap
Conditioner hood
Capot conditionneuse
Aufbereiterhaub

10



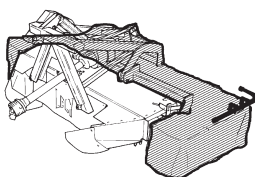
Zwadbord
Swathboard
Planche à andain
Schwadbrett

11



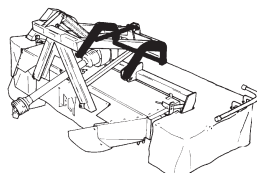
Gewasscheider + spreidplaten
Crop driver + Spreadings fins
Diviseur de végétation + Volets éparpilleurs
Erntetrenner + Breitverteiler

12



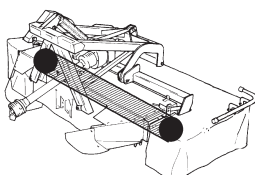
Kneuzerfreem
Conditioner frame
Châssis de conditionneuse
Aufbereiterrahmen

13



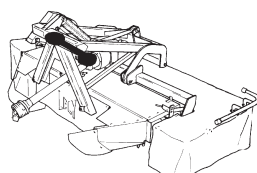
Hefinrichting
Lever arm
Bras d'élévation
Hebearm

14



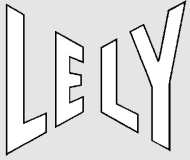
Rotor
Rotor
Rotor
Rotor

15



Koppelingsas (maaibalk + rotor)
PTO shaft (cutter bar + rotor)
Arbre de transm. (barre de coupe + rotor)
Gelenkwelle (Mähbalken + Rotor)

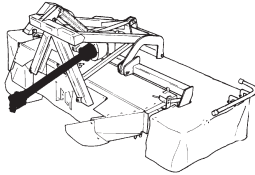
16



Inhoud
Contents
Index
Inhalt

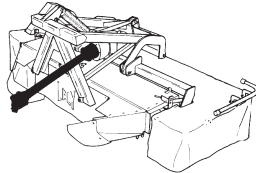
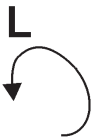
SPLENDIMO 280 FC

pagina
page
page
Seite



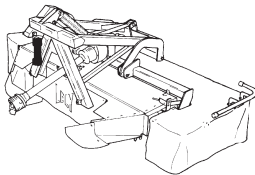
Koppelingsas
PTO shaft
Arbre de transmission
Gelenkwelle

17



Koppelingsas
PTO shaft
Arbre de transmission
Gelenkwelle

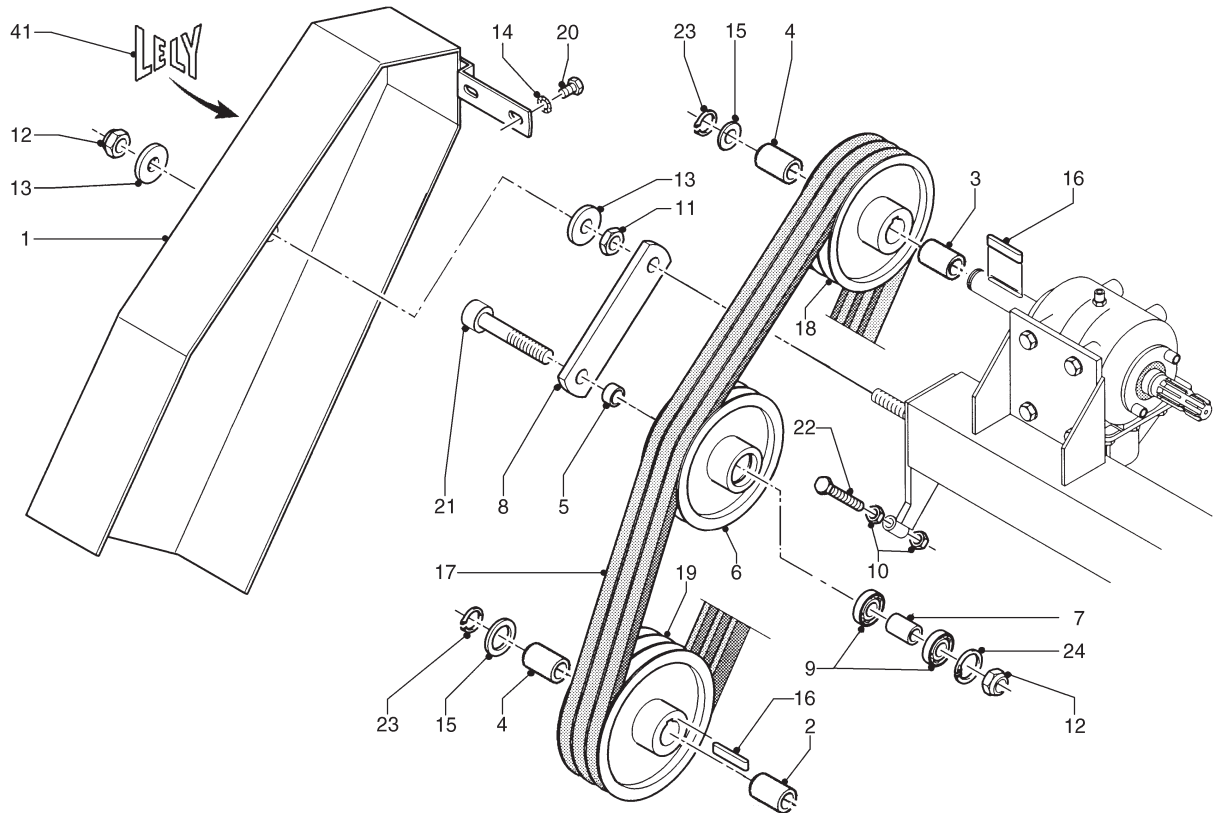
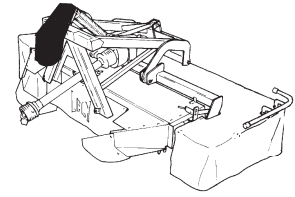
18



Koppelingsas (eerste maaielement)
PTO shaft (first cutting unit) 19
Arbre de transm. (1ère unité de fauchage)
Gelenkwelle (erste Mäh-Einheit)

LELY

SPLENDIMO	type number type number numéro de type Typnummer	vanaf serienummer as from serial number après numéro de serie ab Seriennummer
280 FC	4-1227-0025-1	3018100



E088-03-00

REF.	ONDERDEELNR. PART NUMBER REFERENCE TEILNUMMER	AANTAL QUANTITY QUANTITE ANZAHL
------	--	--

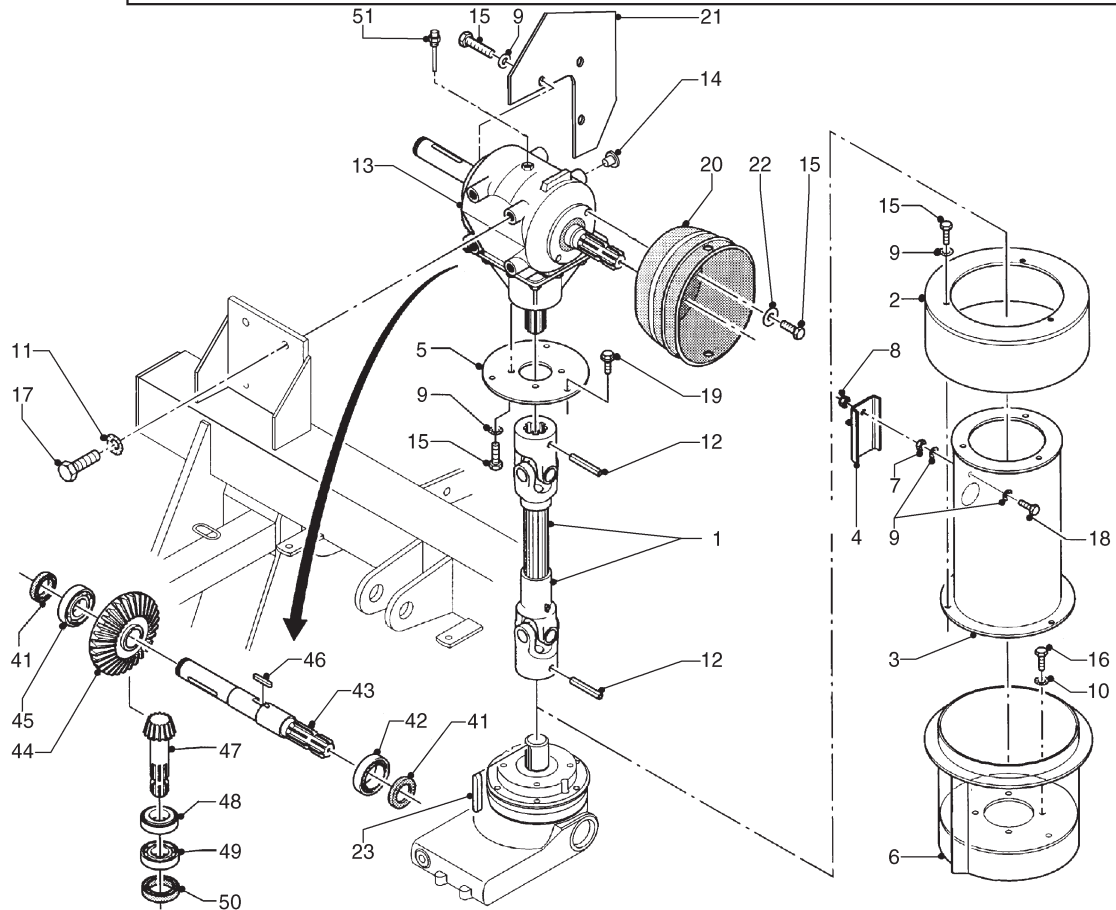
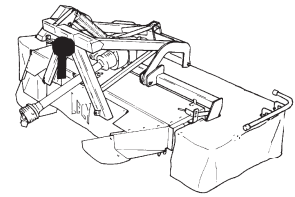
1	4.1227.0470.0	1	
2	4.1227.1436.0	1	
3	4.1227.1438.0	1	
4	4.1227.1439.0	2	
5	4.1227.1466.0	1	
6	4.1227.1482.0	1	SPB 180
7	4.1227.1484.0	1	
8	4.1227.1485.0	1	
9	9.1001.0005.4	2	6204 2RS1
10	9.1029.0012*4	2	M14 DIN 934-8
11	9.1029.0016*1	1	M20 DIN 934-8
12	9.1030.0017*1	2	M20 DIN 985-8
13	9.1048.0055*0	2	A21 DIN 9021 []
14	9.1051.0003*1	2	A12,5 DIN 6798 [#####]
15	9.1052.0006*3	2	35x45x2,5 DIN 988 []
16	9.1071.0055.5	2	B10x8x45 DIN 6885
17	9.1075.0020.1	3	SPB Lw= 1850 SF
	9.1075.0022.3	(3)	[x]SPB Lw= 1750 SF 1000/min
18	9.1075.0107.4	1	GY-180-SPB3
19	9.1075.0108.5	1	GY-200-SPB3
	9.1075.0107.4	(1)	[x]GY-180-SPB3 1000/min
20	9.1113.0047*4	2	M12x20 DIN 933-8.8
21	9.1113.0097*5	1	M20x120 DIN 931-8.8
22	9.1113.0300*5	1	M14x90 DIN 933-8.8
23	9.1119.0019.5	2	35x2,50 DIN 471
24	9.1120.0002.1	1	47x1,75 DIN 472

REF.	ONDERDEELNR. PART NUMBER REFERENCE TEILNUMMER	AANTAL QUANTITY QUANTITE ANZAHL
------	--	--

41	9.1170.0200.2	2	"LELY"
----	---------------	---	--------

LELY

SPLENDIMO	type number type number numéro de type Typnummer	vanaf serienummer as from serial number après numéro de série ab Seriennummer
280 FC	4-1227-0025-1	3018100



E090-05-00

REF.	ONDERDEELNR. PART NUMBER REFERENCE TEILNUMMER	AANTAL QUANTITY QUANTITE ANZAHL	
------	--	--	--

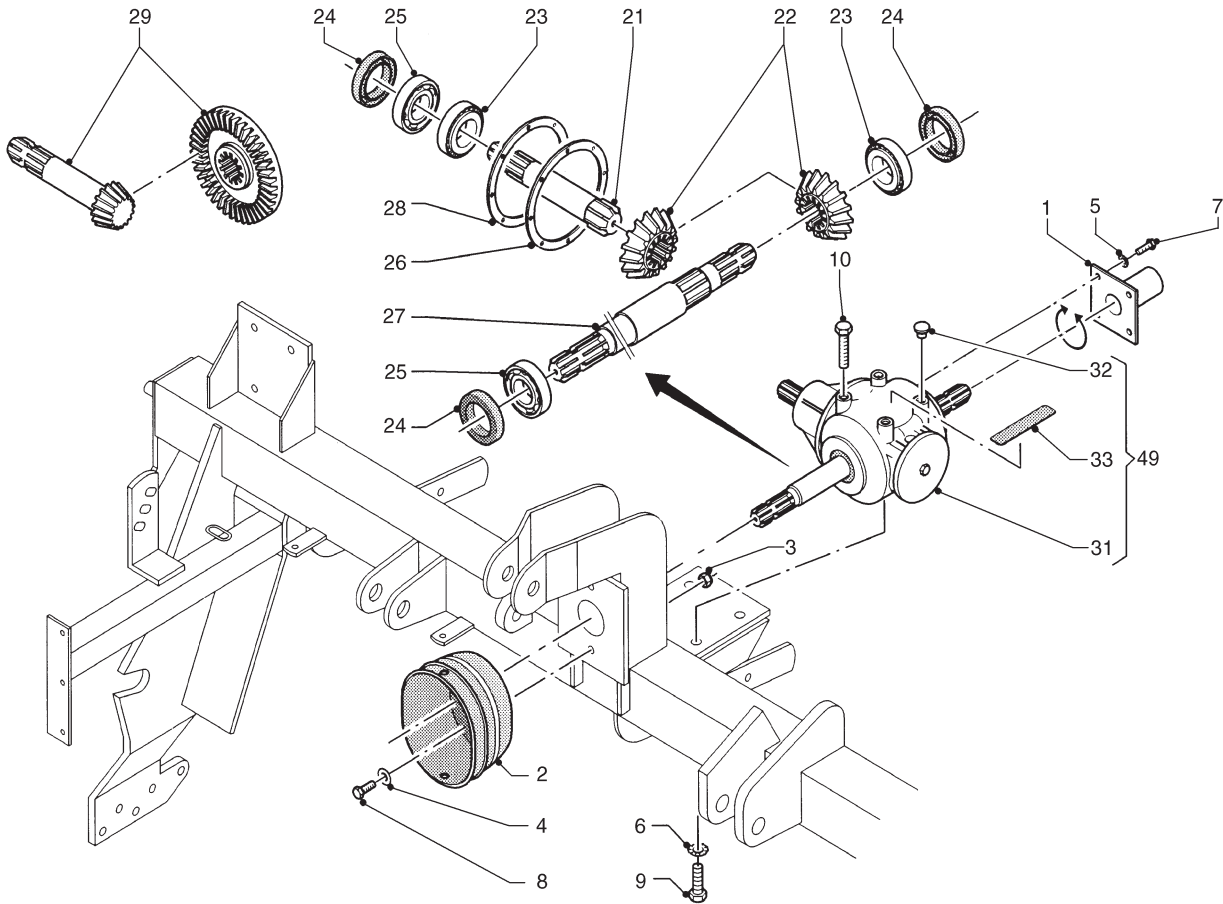
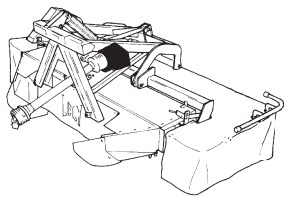
1	4.1227.0219.0	1	= REF. 1 Pag. 25
2	4.1227.0441.0	1	
3	4.1227.0660.0	1	
4	4.1227.1457.0	1	
5	4.1227.1467.0	1	
6	4.1256.0440.0	1	
7	9.1029.0004*3	1	M8 DIN 934-8
8	9.1030.0012*3	1	M8 DIN 985-8
9	9.1051.0001*6	13	A8,2 DIN 6798 [####]
10	9.1051.0002*0	4	A10,5 DIN 6798 [####]
11	9.1051.0003*1	4	A12,5 DIN 6798 [####]
12	9.1070.0028.0	2	Ø10x60 DIN 1481
13	9.1083.0009.3	1	1:3 - 1.3/8" (6) - Ø35 - 1.3/8" (6)
	9.1171.0042.4	(0,85 L)	1L GX 85W-140
14	9.1108.0036.6	4	Ø10,75x5,5
15	9.1113.0013*5	15	M8x16 DIN 933-8.8
16	9.1113.0026*4	4	M10x16 DIN 933-8.8
17	9.1113.0050*0	4	M12x30 DIN 933-8.8
18	9.1113.0128*1	1	M8x25 DIN 933-8.8
19	9.1114.0009*0	3	M10x30 8-8
20	4.1227.1434.0	1	900Nm
21	4.1227.1445.0	1	
22	9.1048.0005*6	4	A8,4 DIN 9021 [—]
23	9.1071.0053.3	(1)	= REF. 21 Pag. 04

REF.	ONDERDEELNR. PART NUMBER REFERENCE TEILNUMMER	AANTAL QUANTITY QUANTITE ANZAHL		
------	--	--	--	--

41	-	(2)	40x62x7	[> <]
42	9.1001.0027.5	(1)	6208	
43	-	(1)		
44	-	(1)		
45	9.1002.0016.0	(1)	30208	
46	9.1071.0049.6	(1)	B12x8x30	
47	-	(1)		
48	9.1002.0006.4	(1)	32207	
49	-	(1)	6207	
50	-	(1)	A35x72x8	[> <]
51	9.1150.0016.6	(1)	3/8"	



SPLENDIMO	type number type number numéro de type Typnummer	vanaf serienummer as from serial number après numéro de série ab Seriennummer
280 FC	4-1227-0025-1	3018100



E094-04-00

REF.	ONDERDEELNR. PART NUMBER REFERENCE TEILNUMMER	AANTAL QUANTITY QUANTITE ANZAHL		
------	--	--	--	--

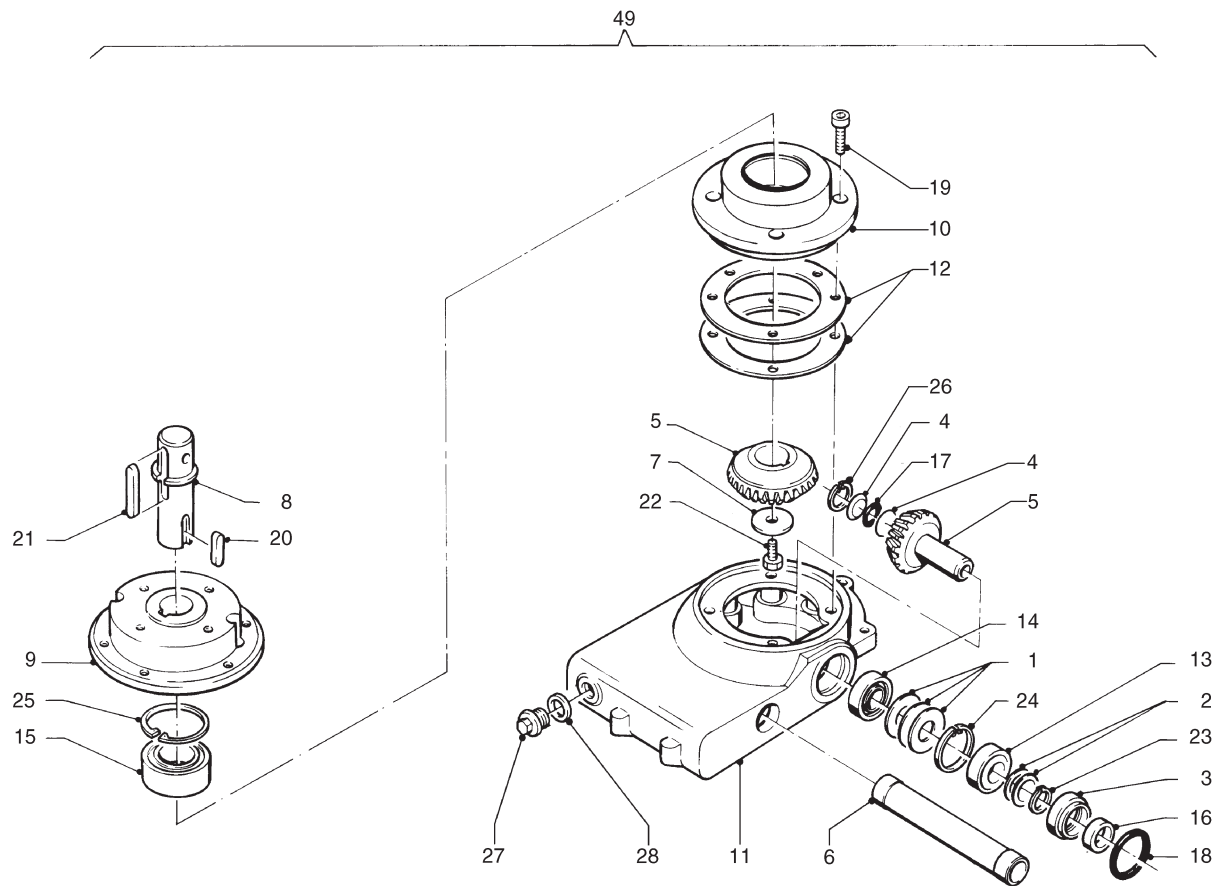
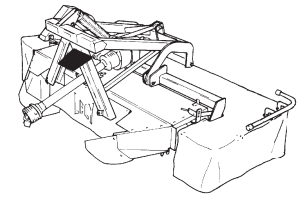
1	4.1227.0500.0	1		
2	4.1227.1434.0	1		
3	9.1030.0013*4	2	M12 DIN 985-8	
4	9.1048.0041*0	2	A13 DIN 9021	[]
5	9.1051.0001*6	2	A8,2 DIN 6798	[####]
6	9.1051.0004*2	4	A16,5 DIN 6798	[####]
7	9.1113.0013*5	2	M8x16 DIN 933-8.8	
8	9.1113.0050*0	2	M12x30 DIN 933-8.8	
9	9.1113.0076*5	4	M16x30 DIN 933-8.8	
10	9.1113.0121*1	1	M16x50 DIN 933-8.8	
21	-	1	1000/min.	
22	-	2	1000/min.	
23	9.1002.0016.0	2	30208	
24	9.1042.0082.5	3	40x80x10 CB	[> <]
25	9.1001.0027.5	2	6208	
26	9.1083.0019.6	1		
27	9.1083.0018.5	1		[RD]
	9.1083.0022.2	1	[x]	[LD]
28	9.1093.0044.0	5	63x80x0,2 DIN 988	
29	-	(1)	540/min.	

REF.	ONDERDEELNR. PART NUMBER REFERENCE TEILNUMMER	AANTAL QUANTITY QUANTITE ANZAHL		
------	--	--	--	--

31	9.1083.0016.3	1	1:1	1000/min.[RD]
	9.1083.0017.4	1	[x]1:1,92	540/min.[RD]
	9.1083.0020.0	1	[x]1:1	1000/min.[LD]
	9.1083.0021.1	1	[x]1:1,92	540/min.[LD]
	9.1171.0042.4	(1,7L)	1L GX 85W-140	
32	9.1108.0058.0	3	Ø14,6x5,5	
33	9.1170.0175.5	1		"MAX.1000/min."
	9.1170.0125.4	1	[x]	"MAX. 540/min."
49	4.1227.0491.1	1	= REF. 31-33	1000/min.[RD]
49	4.1227.0521.1	1	[x]= REF. 31-33	540/min.[RD]
49	4.1227.0590.1	1	[x]= REF. 31-33	1000/min.[LD]
49	4.1227.0610.1	1	[x]= REF. 31-33	540/min.[LD]

LELY

SPLENDIMO	type number type number numéro de type Typnummer	vanaf serienummer as from serial number après numéro de série ab Seriennummer
280 FC	4-1227-0025-1	3018100



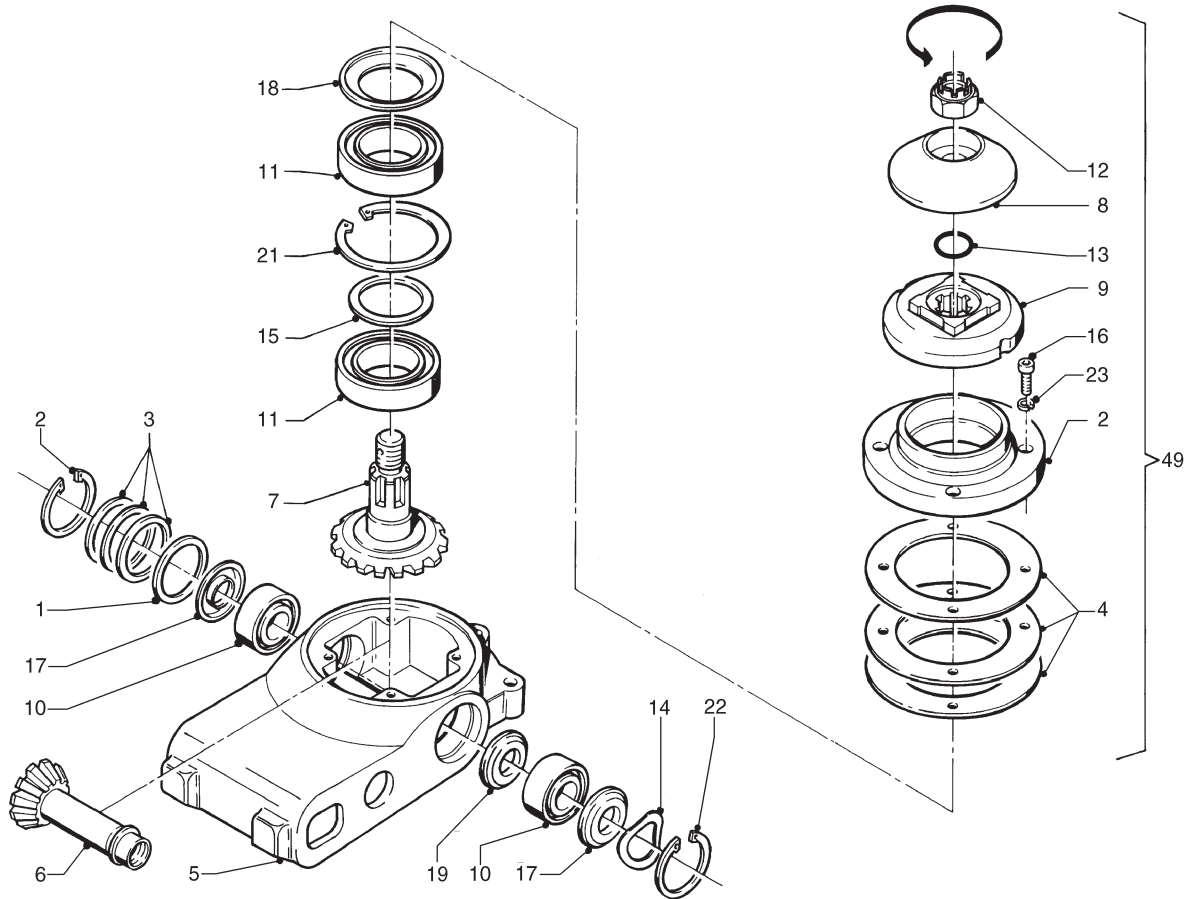
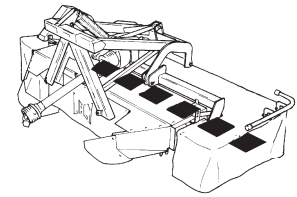
E071-06-00

REF.	ONDERDEELNR. PART NUMBER REFERENCE TEILNUMMER	AANTAL QUANTITY QUANTITE ANZAHL	
1	2.3222.0022.0	(1)	[D+D]
2	4.1211.0412.0	(1)	[D+D]
3	4.1211.0430.0	1	
4	4.1211.0432.0	2	
5	4.1220.0092.1	1+1	[T+T]
6	4.1220.0123.0	1	
7	4.1220.0768.0	1	
8	4.1220.0769.0	1	
9	4.1220.0771.0	1	
10	4.1220.0772.0	1	
11	4.1227.0247.0 9.1171.0042.4	1 (0,45 L)	1L GX 85W-140
12	4.1227.0248.0	(1)	[D+D]
13	9.1002.0024.1	1	30205
14	9.1002.0033.3	1	32205 B
15	9.1005.1002.4	1	BA2B 446762B
16	9.1042.0058.2 9.1171.0050.5	1 (0,02 kg)	25x42x7 CB 0,4kg Unirex N3 ESSO [» «]
17	9.1043.0036.0	1	OR Ø16x2
18	9.1043.0038.2	1	OR Ø52x2
19	9.1057.0010.2	4	M10x25 DIN 912-12.9
20	9.1071.0051.1	1	B10x8x25 DIN 6885
21	9.1071.0053.3	1	B10x8x63 DIN 6885 = REF. 23 Pag. 02

REF.	ONDERDEELNR. PART NUMBER REFERENCE TEILNUMMER	AANTAL QUANTITY QUANTITE ANZAHL	
22	9.1113.0147*6	1	M12x30 DIN 933-10.9
23	9.1119.0022.1	1	25x2-06 DIN 471
24	9.1120.0003.2	1	52x2,00 DIN 472
25	9.1120.0009.1	1	72x2,50 DIN 472
26	9.1120.0030.1	1	20x1,00 DIN 472
27	9.1131.0013.1	1	R1/2"
28	9.1137.0408.5	1	Ø21x26x1,5 Cu [—]
49	4.1227.0840.0	1	= REF. 1-28

LELY

SPLENDIMO	type number type number numéro de type Typnummer	vanaf serienummer as from serial number après numéro de serie ab Seriennummer
280 FC	4-1227-0025-1	3018100



E063-05-00

REF.	ONDERDEELNR. PART NUMBER REFERENCE TEILNUMMER	AANTAL QUANTITY QUANTITE ANZAHL
------	--	--

1	4.1201.0061.0	1
2	4.1220.0061.0	1
3	4.1220.0078.0	(1)
4	4.1220.0079.0	(1)
5	4.1220.0287.0	1
	9.1171.0038.0	1
	9.1171.0039.1	(0,095 kg)
	9.1171.0040.2	(0,095 kg)
	9.1171.0041.3	(0,095 kg)
6	4.1220.0288.0	1
7	4.1220.0289.0	1
8	4.1220.1942.0	1
9	4.1225.0189.0	1
10	9.1001.0064.0	2
	6005 2RS1-C4	
11	9.1001.0065.1	2
12	9.1031.0014.4	1
	M22x1,5 DIN 937-22H	
13	9.1043.0061.4	1
	OR Ø23x2	
14	9.1049.0013.6	1
	46,5x40-G 6005	
15	9.1052.0004.1	1
	45x55x3 DIN 988	
16	9.1057.0089.4	4
	M8x25 DIN 912-12.9	
17	9.1107.0007.5	2
	6005 ZJV	
18	9.1107.0008.6	1
	6009 ZAV	
19	9.1107.0014.5	1
	6005 ZAV	
20	9.1120.0002.1	1
	47x1,75 DIN 472	
21	9.1120.0026.4	1
	75x3,00 DIN 472	
22	9.1120.0027.5	1
	47x1,75 V	
23	9.1121.0024*1	4
	8 DIN 7980	

[—/—]

REF.	ONDERDEELNR. PART NUMBER REFERENCE TEILNUMMER	AANTAL QUANTITY QUANTITE ANZAHL
------	--	--

49	4.1220.0270.1	3	= REF. 1-23	[LD]
49	4.1220.0290.1	3	[x]= REF. 1-23	[RD]

LELY

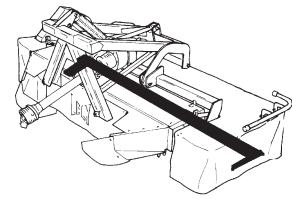
SPLENDIMO

type number
type number
numéro de type
Typnummervanaf serienummer
as from serial number
après numéro de série
ab Seriennummer

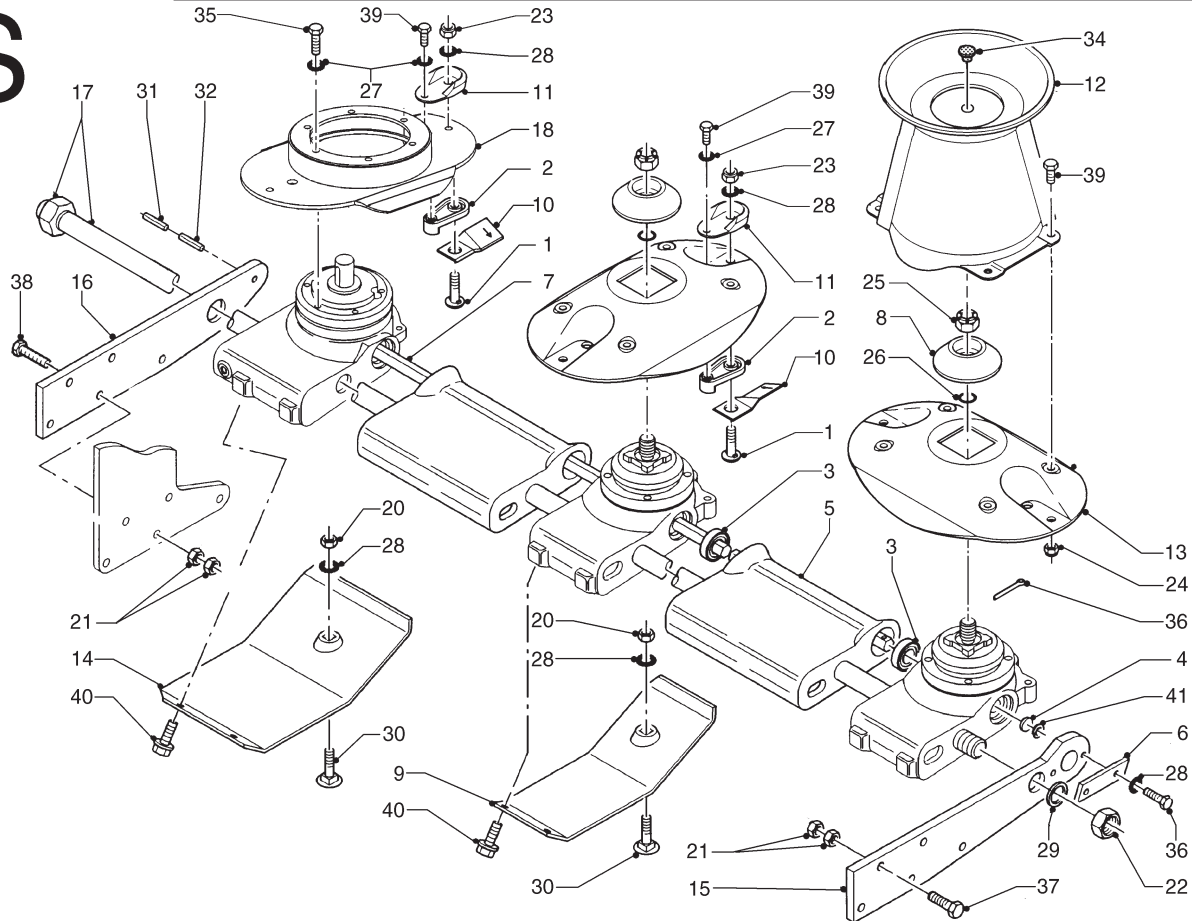
280 FC

4-1227-0025-1

3018100



S



E074-06-03

REF.	ONDERDEELNR. PART NUMBER REFERENCE TEILNUMMER	AANTAL QUANTITY QUANTITE ANZAHL	
------	--	--	--

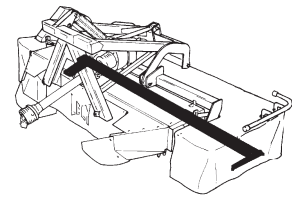
1	4.1201.0141*0	14	M10x32 DIN 267-12.9
2	4.1201.0142.0	14	
3	4.1201.0145.0	11	
4	4.1201.0329.0	1	
5	4.1220.0033.0	6	
6	4.1220.0034.0	1	
7	4.1220.0039.0	1	L= 2312
8	4.1220.1942.0	6	= REF. 7 Pag. 06
9	4.1220.1962.0	6	4mm Slijtsloffen/Verschleißkufen Wear skids/Patins d'usure
10	4.1220.1996.0	8	[RD] L= 100
	4.1220.1995.0	6	[LD] L= 100
11	4.1225.0449.0	14	
12	4.1225.0480.0	1	
13	4.1225.1489.0	6	
14	4.1227.0629.0	1	4mm Slijtslof/Verschleißkufe Wear skid/Patin d'usure
15	4.1241.0750.0	1	
16	4.1241.0760.0	1	
17	4.1243.0110.0	1	
18	4.1258.0680.0	1	
20	9.1029.0005*4	7	M10 DIN 934-8

REF.	ONDERDEELNR. PART NUMBER REFERENCE TEILNUMMER	AANTAL QUANTITY QUANTITE ANZAHL	
------	--	--	--

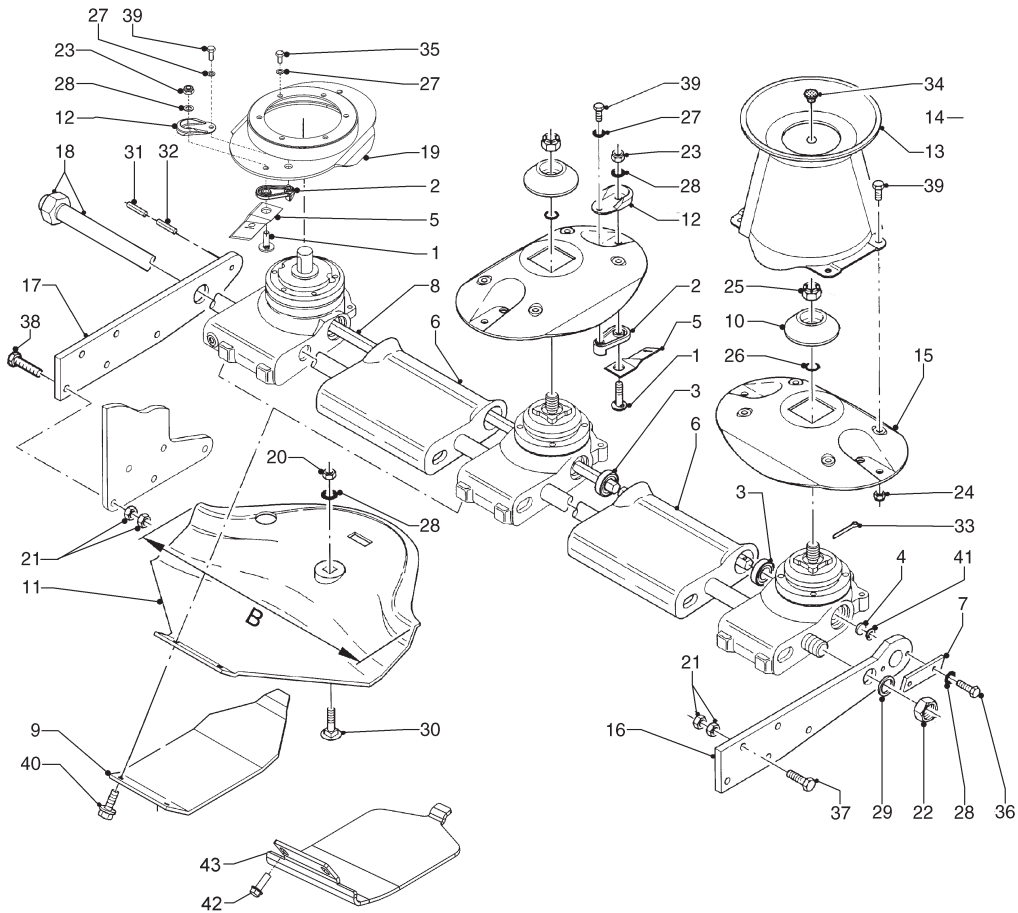
21	9.1029.0012*4	20	M14 DIN 934-8
22	9.1029.0024.2	1	M30x1,5 DIN 934-10
23	9.1030.0018*2	14	M10 DIN 985-10
24	9.1030.0040*3	4	M8 DIN 985-10
25	9.1031.0014.4	6	M22x1,5 DIN937-22H = REF. 12 Pag. 06
26	9.1043.0061.4	6	OR Ø23x2= REF. 13 Pag. 06
27	9.1051.0001.6	20	A8,2 DIN 6798
28	9.1051.0002.0	23	A10,5 DIN 6798 [####]
29	9.1052.0011*1	1	30x42x2,5 DIN 988 [—]
30	9.1058.0015*6	7	M10x35 DIN 603-8.8
31	9.1070.0077.0	1	Ø11x40 DIN 1481
32	9.1070.0083.6	1	Ø7x30 DIN 1481
34	9.1108.0063.5	1	Ø9,3
35	9.1113.0013*5	6	M8x16 DIN 933-8.8
36	9.1113.0027*5	2	M10x20 DIN 933-8.8
37	9.1113.0231*6	5	M14x65 DIN 931-8.8
38	9.1113.0246*0	5	M14x55 DIN 931-8.8
39	9.1113.0341*3	18	M8x20 DIN 933-10.9
40	9.1114.0009*0	14	M10x30 8.8
41	9.1120.0028.6	1	18x1,00 DIN 472

LELY

SPLENDIMO	type number type number numéro de type Typnummer	vanaf serienummer as from serial number après numéro de serie ab Seriennummer
280 FC	4-1227-0025-1	3018100



N



E106-04-07

REF.	ONDERDEELNR. PART NUMBER REFERENCE TEILNUMMER	AANTAL QUANTITY QUANTITE ANZAHL
------	--	--

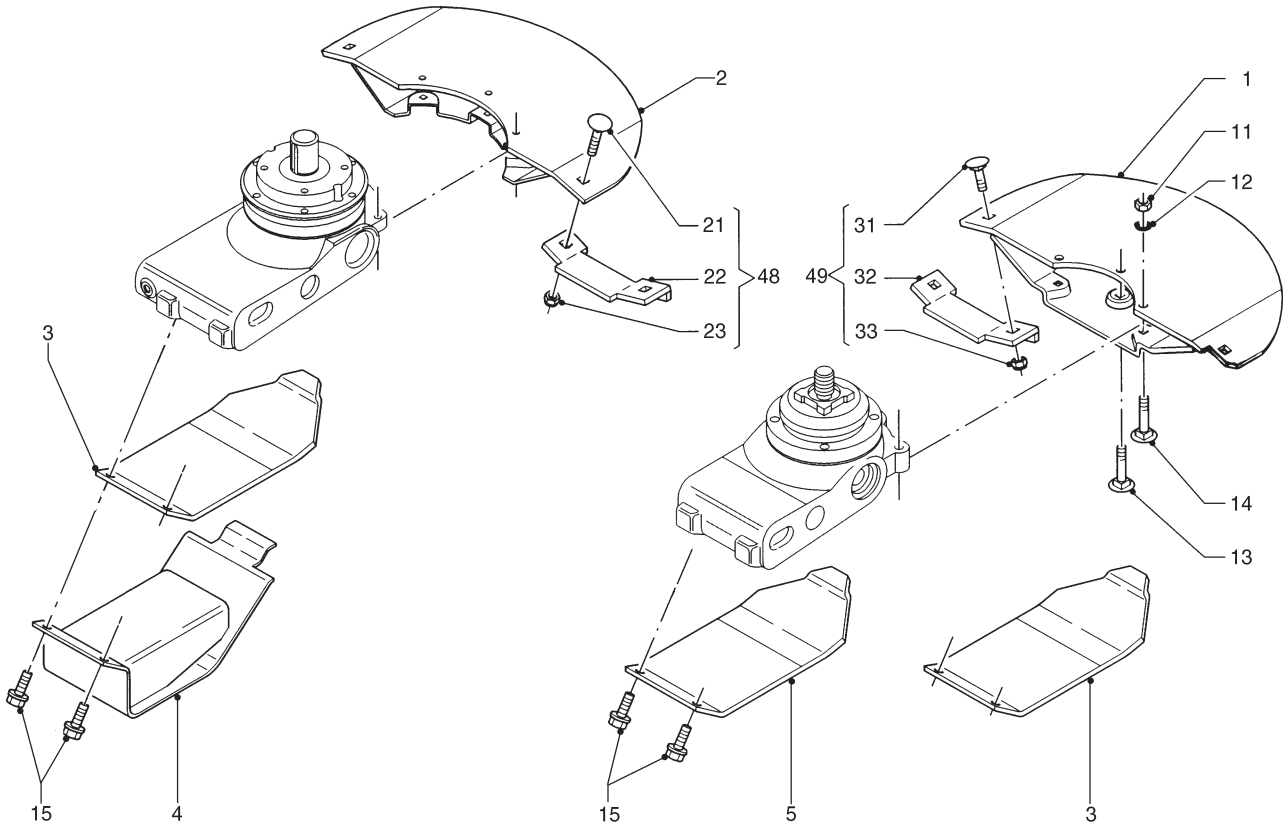
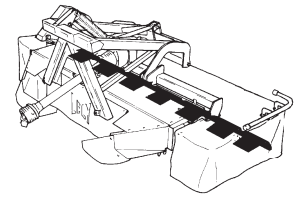
1	4.1201.0141.0	14	
2	4.1201.0142.0	14	
3	4.1201.0145.0	11	
4	4.1201.0329.0	1	
5	4.1201.1473.0	8	[LD] L= 120 mm
	4.1201.1474.0	6	[RD] L= 120 mm
6	4.1220.0033.0	6	
7	4.1220.0034.0	1	
8	4.1220.0039.0	1	
9	4.1220.1329.0	7	4mm
	4.1220.1911.0	7	8mm
			Slijtplaten/Verschleißplatten Wear plates/Plaques d'usure
10	4.1220.1467.0	6	= REF. 8 Pag. 05
11	4.1220.1963.0	6	B= 378 mm 4mm
	4.1227.1455.0	1	B= 404 mm 4mm
	4.1241.0849.0	1	B= 300 mm 4mm
			Slijtsloffen/Verschleißkufen Wear skids/Patins d'usure
12	4.1225.0449.0	14	
13	4.1225.0480.0	1	
15	4.1225.1489.0	6	
16	4.1241.0750.0	1	
17	4.1241.0760.0	1	

REF.	ONDERDEELNR. PART NUMBER REFERENCE TEILNUMMER	AANTAL QUANTITY QUANTITE ANZAHL
------	--	--

18	4.1243.0110.0	1	
19	4.1258.0670.0	1	
20	9.1029.0005*4	7	M10 DIN 934-8
21	9.1029.0012*4	20	M14 DIN 934-8
22	9.1029.0024.2	1	M30x1,5 DIN 934-10
23	9.1030.0018*2	14	M10 DIN 985-10
24	9.1030.0040*3	4	M8 DIN 985-10
25	9.1031.0014.4	6	M22x1,5 DIN937 = REF. 12 Pag. 05
26	9.1043.0061.4	6	OR 23x2 = REF. 13 Pag. 05
27	9.1051.0001.6	20	A8,2 DIN 6798 [####]
28	9.1051.0002.0	23	A10,5 DIN 6798 [####]
29	9.1052.0011*1	1	30x42x2,5 DIN 988 [—]
30	9.1058.0015*6	7	M10x35 DIN 603-8.8
31	9.1070.0077.0	1	Ø11x40 DIN 1481
32	9.1070.0083.6	1	Ø7x30 DIN 1481
33	9.1072.0030.0	6	3,2x36 DIN 94
34	9.1108.0063.5	1	Ø9,3
35	9.1113.0013*5	6	M8x16 DIN 933-8.8
36	9.1113.0027*5	2	M10x20 DIN 933-8.8
37	9.1113.0231*6	5	M14x65 DIN 931-8.8
38	9.1113.0246*0	5	M14x55 DIN 931-8.8
39	9.1113.0341*3	18	M8x20 DIN 933-10.9
40	9.1114.0009*0	14	M10x30 8.8
41	9.1120.0028.6	1	18x1,00 DIN 472
42	9.1114.0033.3	2	M10x30 8,8 DIN 6921
43	4.1274.1916.0	(4-7)	

LELY

SPLENDIMO	type number type number numéro de type Typnummer	vanaf serienummer as from serial number après numéro de série ab Seriennummer
280 FC	4-1227-0025-1	3018100



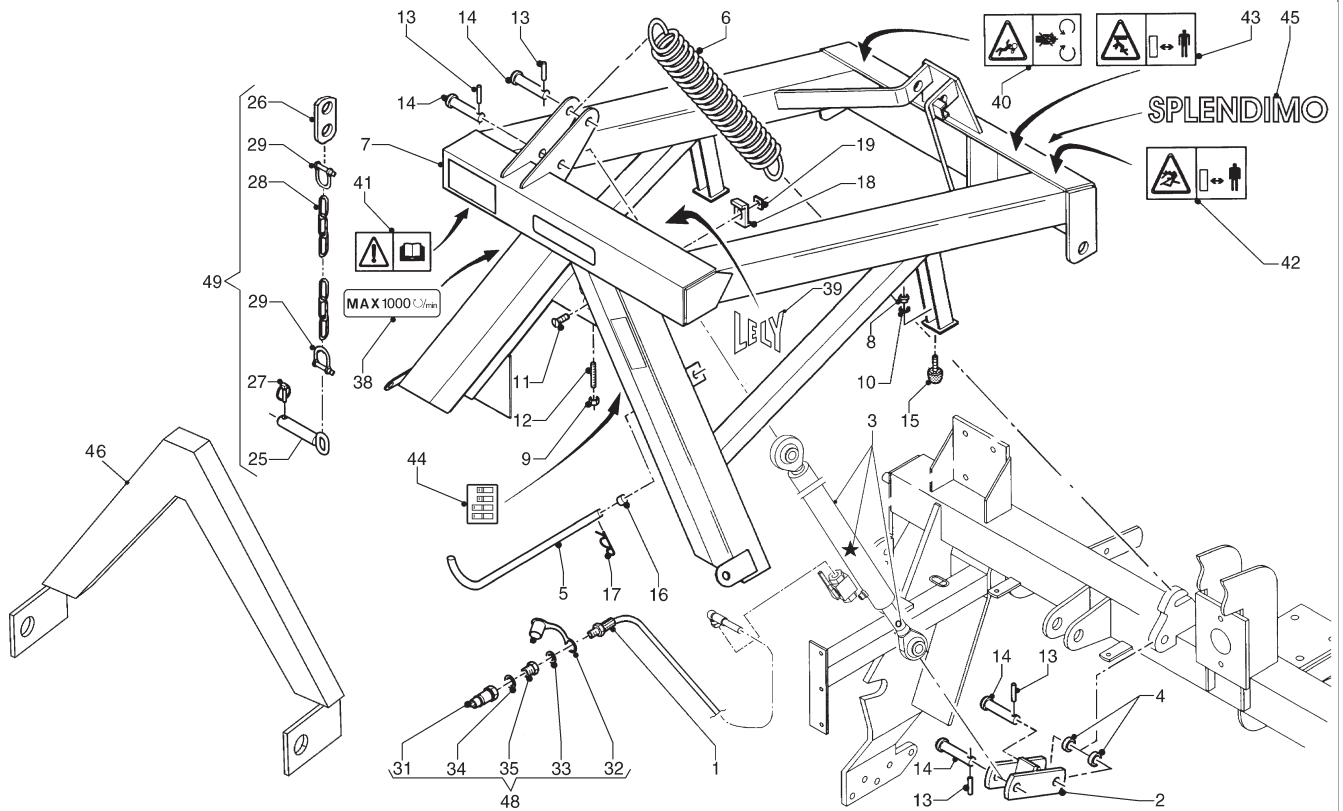
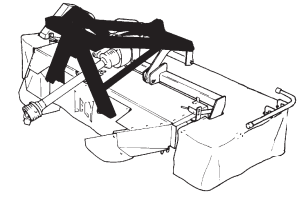
E105-04-00

REF.	ONDERDEELNR. PART NUMBER REFERENCE TEILNUMMER	AANTAL QUANTITY QUANTITE ANZAHL		
1	4.1220.0341.0	6	Glijsoffen Skids Patins Kufen	5mm
2	4.1220.0351.0	1	Glijstof Skid Patin Kufe	3mm
3	4.1225.0359.0	7	Slijtplaten Wear plates Plaques d'usure Verschleissplatten	10 mm
4	4.1225.0400.0	7	Verhoogde slijtplaten Top skids Plaques réhausseurs Erhöhte Verschleißplatten	6mm
5	4.1225.0499.0	7	Slijtplaten Wear plates Plaques d'usure Verschleissplatten	4 mm
11	9.1029.0005*4	21	M10 DIN 934-8	
12	9.1051.0002*0	21	A10,5 DIN 6798	[#####]
13	9.1058.0048*4	7	M10x40 DIN 603-8.8	
14	9.1058.0049*5	14	M10x45 DIN 603-8.8	
15	9.1114.0009*0	14	M10x30 8.8	
21	9.1058.0027*4	2	M10x25 DIN 603	

REF.	ONDERDEELNR. PART NUMBER REFERENCE TEILNUMMER	AANTAL QUANTITY QUANTITE ANZAHL		
22	4.1220.0250.0	1	[<—135—>]	
23	9.1030.0004*2	2	M10 DIN 985-8	
31	9.1058.0027*4	10	M10x25 DIN 603	
32	4.1225.0550.0	5	[<—125—>]	
33	9.1030.0004*2	10	M10 DIN 985-8	
48	4.1220.0260.8	1	= REF. 21-23 [<—135—>] Maabalk-steenbescherming Cutter bar stone protection Kit de protection anti-pierres Mähbalken-Steinschutzsatz	
49	4.1225.0540.8	5	= REF. 31-33 [<—125—>] Maabalk-steenbescherming Cutter bar stone protection Kit de protection anti-pierres Mähbalken-Steinschutzsatz	

LELY

SPLENDIMO	type number type number numéro de type Typnummer	vanaf serienummer as from serial number après numéro de série ab Seriennummer
280 FC	4-1227-0025-1	3018100



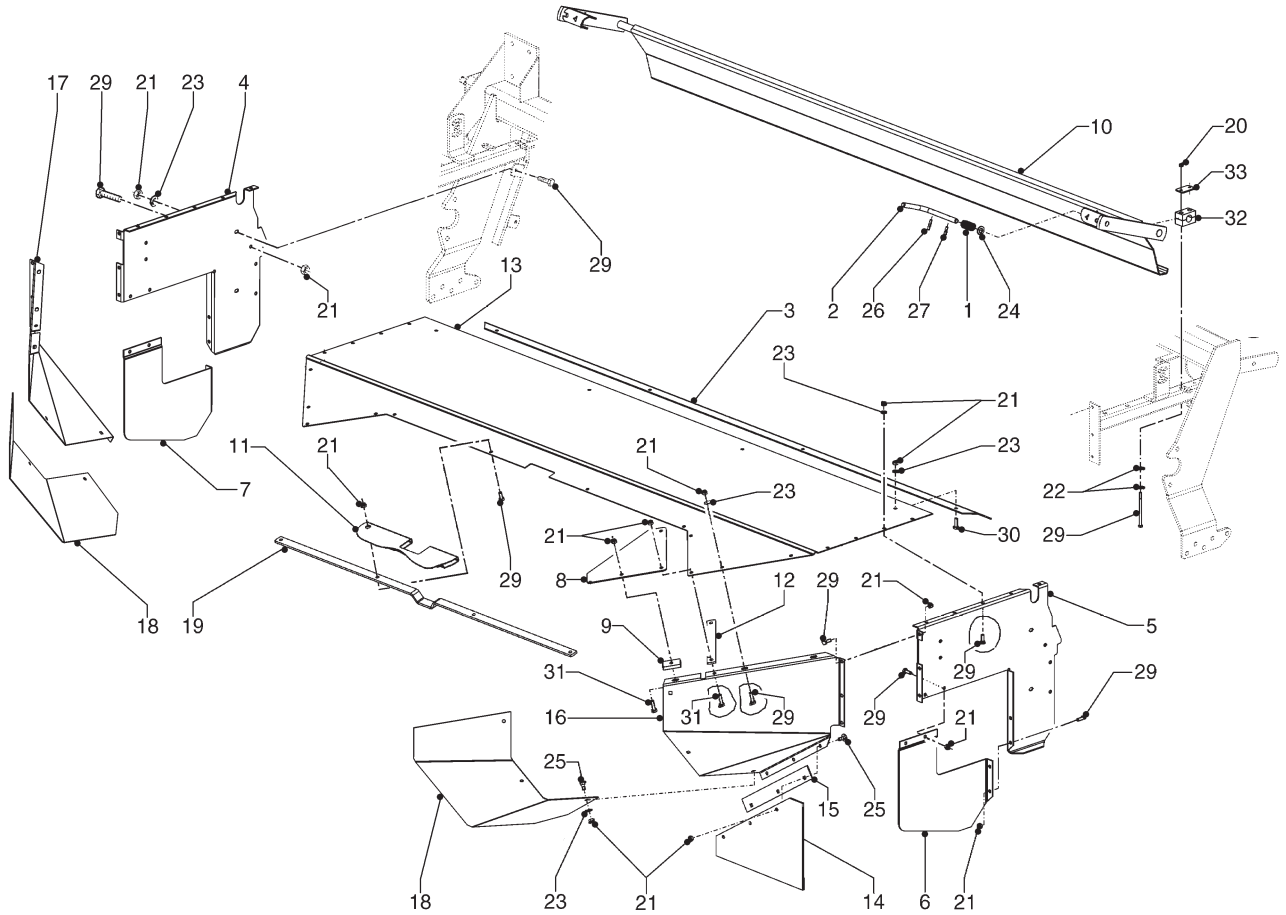
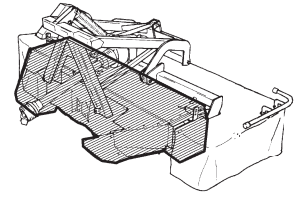
E089-04-05

REF.	ONDERDEELNR. PART NUMBER REFERENCE TEILNUMMER	AANTAL QUANTITY QUANTITE ANZAHL	
1	2.3201.2311.0	1	L= 1810 mm
2	4.1227.0390.0	1	
3	4.1227.0411.0	1	(3= 3 + ★ + ○)
★	4.1016.0518.0	(1)	(d= Ø25, D= Ø40/50) [A+A][x]
○	4.9000.0113.0	(1)	
4	4.1227.1477.0	1	
5	4.1227.1480.0	1	
6	4.1227.1493.0	1	
7	4.1255.0340.0	1	
8	9.1029.0005*4	2	M10 DIN 934-8
9	9.1029.0008*0	1	M12 DIN 934-8
10	9.1051.0002*0	2	A10,5 DIN 6798 [#####]
11	9.1057.0304.2	1	M12x30 DIN 7991-8.8
12	9.1063.0010.3	1	M12x40 DIN 913-45H
13	9.1070.0030.2	4	Ø12x50 DIN 1481
14	9.1088.0002*5	4	19-76
15	9.1105.0011.4	2	K50x22,5 M10x28
16	9.1108.0066.1	1	Ø16
17	9.1124.0001*3	1	Ø5
18	9.1180.0097.1	1	
19	9.1180.0098.2	1	
25	1.1804.0310.0	2	
26	4.1201.2078.0	2	
27	9.1123.0002*5	2	Ø11
28	9.1144.0018*0	2	Ø10x65 (13x)
29	9.1146.0005*6	4	5/8"

REF.	ONDERDEELNR. PART NUMBER REFERENCE TEILNUMMER	AANTAL QUANTITY QUANTITE ANZAHL	
31	9.1137.0302.4	1	1/2" G
32	9.1137.0303.5	1	1/2" PVC
33	9.1137.0409.6	1	Ø13,75x20,57x2,03 []
34	9.1137.0411.1	1	Ø21,54x28,58x2,3 []
35	9.1137.0603.4	1	1/2"-1/4"
38	9.1170.0175.5	1	"MAX. 1000/min."
	9.1170.0125.4	(1)	[x]"MAX. 540/min."
39	9.1170.0200.2	1	"LELY"
40	9.1170.0407.6	1	
41	9.1170.0408.0	1	
42	9.1170.0410.2	1	
43	9.1170.0417.2	1	
44	9.1170.0430.1	1	"Maaiemes 83 / 120 mm" "Knife 83 / 120 mm" "Couteau 83 / 120 mm" "Messer 83 / 120 mm"
45	9.1170.0511.5	1	"SPLENDIMO"
46	9.1127.0022.6	1	
48	2.3201.2301.8	1	= REF. 31-35
49	4.1227.0630.0	1	= REF. 25-29



SPLENDIMO	type number type number numéro de type Typnummer	vanaf serienummer as from serial number après numéro de série ab Seriennummer
280 FC	4-1227-0025-1	3018100



E223-03-01

REF.	ONDERDEELNR. PART NUMBER REFERENCE TEILNUMMER	AANTAL QUANTITY QUANTITE ANZAHL
------	--	--

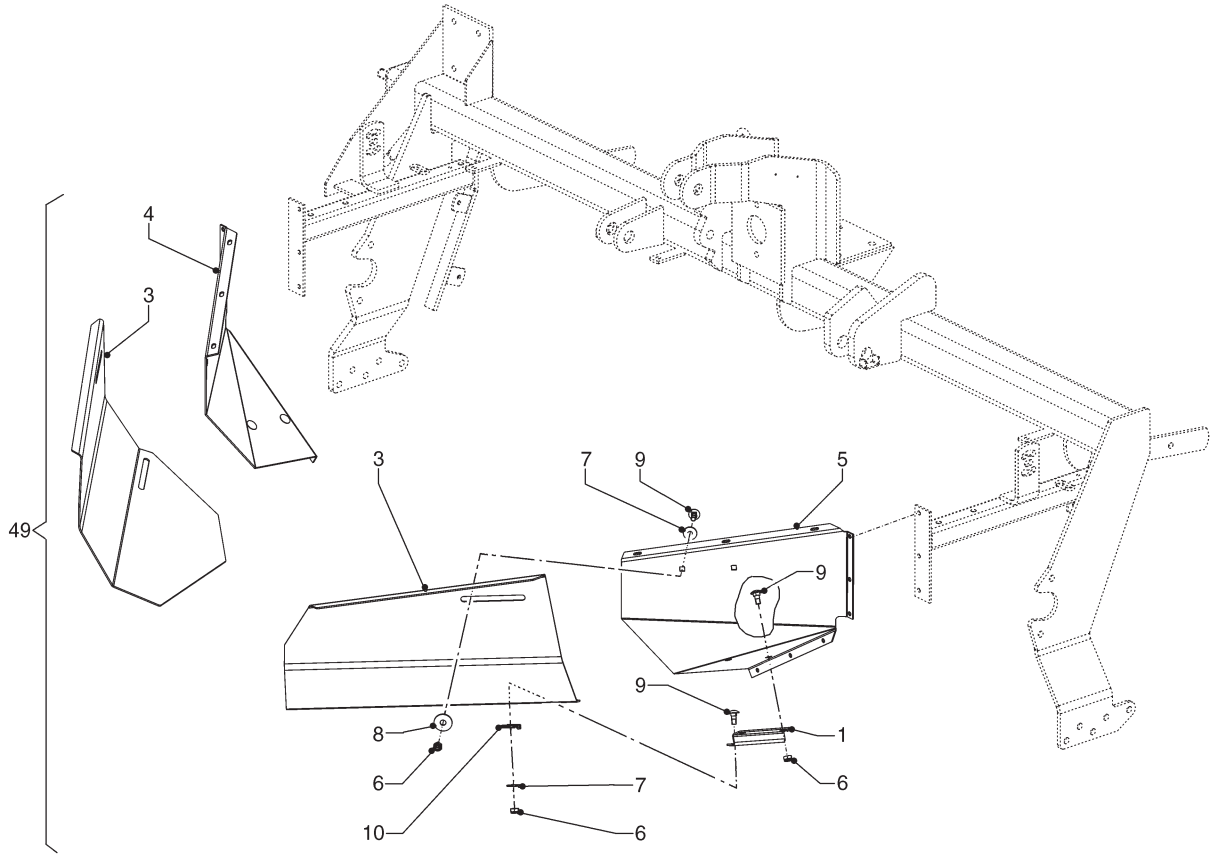
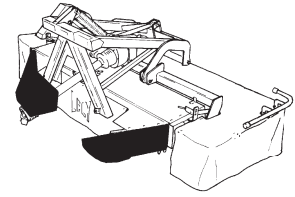
1	4.1002.0093.0	2
2	4.1207.0188.0	2
3	4.1217.0364.0	1
4	A 4.1220.1118.0	1 [L]
5	A 4.1220.1119.0	1 [R]
6	4.1220.1694.0	1 [R]
7	4.1220.1693.0	1 [L]
8	4.1227.0728.0	2
9	4.1227.0729.0	2
10	4.1227.0800.0	1
11	4.1227.1441.0	1
12	4.1227.1447.0	2
13	4.1227.1449.0	1
14	4.1227.1458.0	2
15	4.1227.1459.0	2
16	4.1227.1427.0	1 [R]
17	4.1227.1428.0	1 [L]
18	4.1227.1489.0	2
19	4.1255.1479.0	1
20	9.1030.0011*2	4 M6 DIN 985-8
21	9.1030.0012*3	58 M8 DIN 985-8
22	9.1048.0001*2	8 A6,4 DIN 9021
23	9.1048.0004*5	26 8,4 DIN 125
24	9.1048.0012*6	2 A13 DIN 125
25	9.1058.0008*6	12 M8x20 DIN 603

REF.	ONDERDEELNR. PART NUMBER REFERENCE TEILNUMMER	AANTAL QUANTITY QUANTITE ANZAHL
------	--	--

26	9.1070.0017.3	2 Ø6x30 DIN 1481
27	9.1070.0049.0	2 Ø6x24 DIN 1481
28	9.1113.0008*0	4 M6x100 DIN 931-8.8
29	9.1113.0014*6	36 M8x20 DIN 933-8.8
30	9.1113.0128*1	4 M8x25 DIN 933-8.8
31	9.1113.0130*3	6 M8x30 DIN 933-8.8
32	9.1137.0904.4	2
33	9.1137.0905.5	2



SPLENDIMO	type number type number numéro de type Typnummer	vanaf serienummer as from serial number après numéro de série ab Seriennummer
280 FC	4-1227-0025-1	3018100



E229-02-01

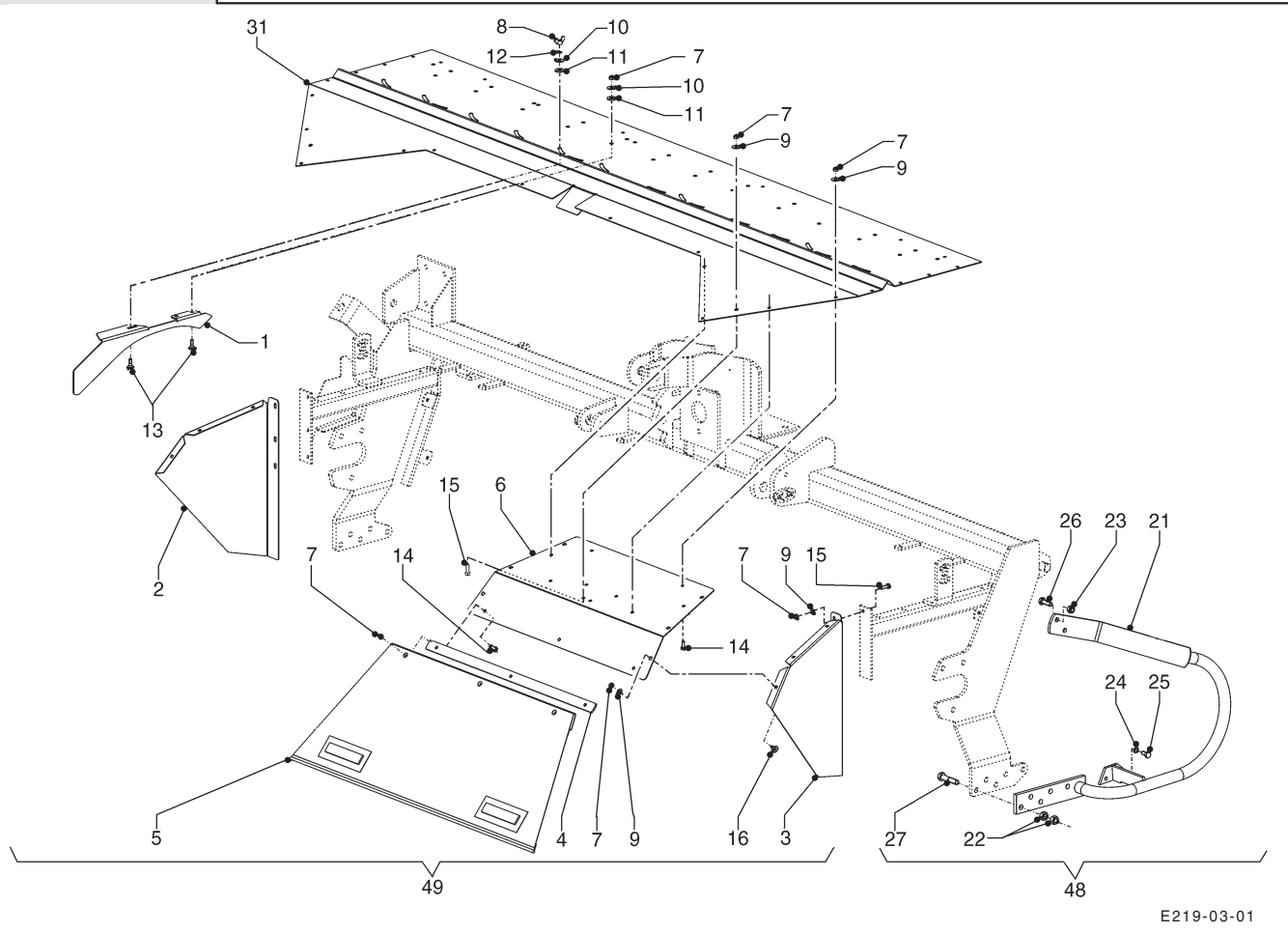
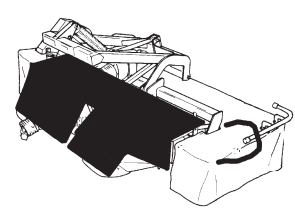
REF.	ONDERDEELNR. PART NUMBER REFERENCE TEILNUMMER	AANTAL QUANTITY QUANTITE ANZAHL
------	--	--

1	4.1255.1480.0	(2)
2	4.1255.1481.0	(1) [L]
3	4.1255.1482.0	(1) [R]
4	4.1255.1497.0	(1) [L]
5	4.1255.1498.0	(1) [R]
6	9.1030.0004*2	(10) M10 DIN 985-8
7	9.1048.0008.2	(6) A10,5 DIN 9021 []
8	9.1048.0067.5	(4) A13 DIN 9021 []
9	9.1058.0056*5	(10) M10x25 DIN 603-8.8
49	4.1227.1030.0	(1) = REF. 1-9

REF.	ONDERDEELNR. PART NUMBER REFERENCE TEILNUMMER	AANTAL QUANTITY QUANTITE ANZAHL
------	--	--



SPLENDIMO	type number type number numéro de type Typnummer	vanaf serienummer as from serial number après numéro de série ab Seriennummer
280 FC	4-1227-0025-1	3018100



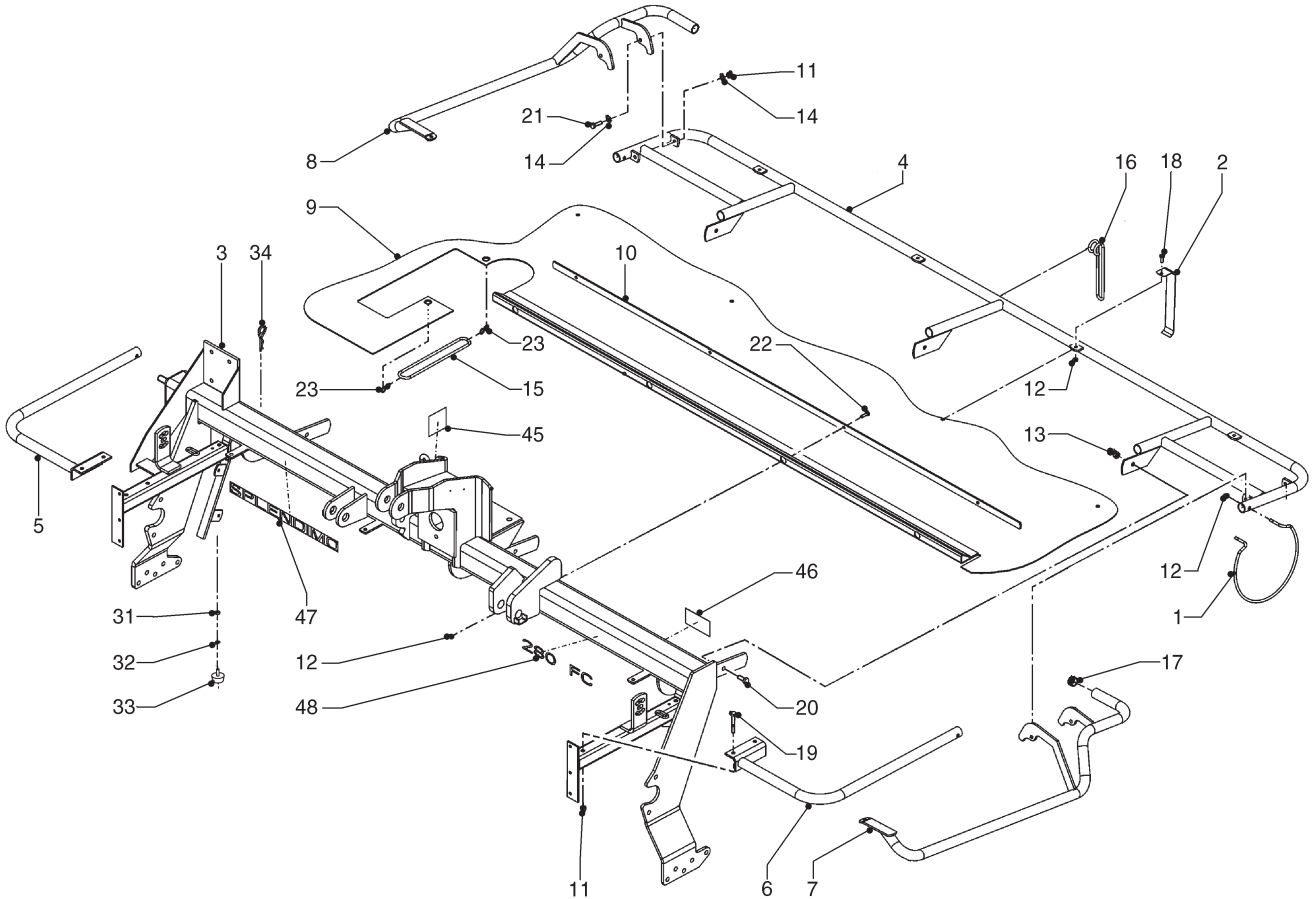
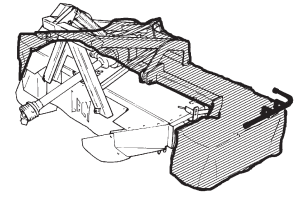
E219-03-01

REF.	ONDERDEELNR. PART NUMBER REFERENCE TEILNUMMER	AANTAL QUANTITY QUANTITE ANZAHL		
1	4.1227.1024.0	8		L = 535
2	4.1227.1027.0	1	[L]	
3	4.1227.1028.0	1	[R]	
4	4.1227.1025.0	2		
5	4.1227.1026.0	2		
6	4.1227.1029.0	2		
7	9.1030.0012*3	40	M8 DIN 985-8	
8	9.1032.0002*5	8	M8 DIN 315-G-5	
9	9.1048.0004.5	20	A8,4 DIN 125	[—]
10	9.1048.0005.6	24	A8,4 DIN 9021	[—]
11	9.1048.0062.0	24	A10 DIN 7349	[—]
12	9.1051.0001.6	8	A8,2 DIN6798	[####]
13	9.1058.0041*4	24	M8x25 DIN 603-8.8	
14	9.1113.0014*6	8	M8x20 DIN 633-8.8	
15	9.1113.0128*1	6	M8x25 DIN 633-8.8	
	9.1113.0014*6	4	M8x20 DIN 633-8.8	
16	9.1058.0041*4	6	M8x25 DIN 603-8.8	
21	4.1227.0680.0	1		
22	9.1029.0012*4	10		
23	9.1030.0013*4	2	M12 DIN 985-8	
24	9.1051.0002.0	2	A10,5 DIN 6798	[####]
25	9.1113.0027*5	2	M10x20 DIN 933-8.8	

REF.	ONDERDEELNR. PART NUMBER REFERENCE TEILNUMMER	AANTAL QUANTITY QUANTITE ANZAHL		
26	9.1113.0125*5	2	M12x35 DIN 933-8.8	
27	9.1113.0231*6	5	M14x65 DIN 931-8.8	
31	4.1227.1433.0	1		
48	4.1227.0670.0	1	= REF. 21-27	
49	4.1227.1000.0	1	= REF. 1-16	



SPLENDIMO	type number type number numéro de type Typnummer	vanaf serienummer as from serial number après numéro de serie ab Seriennummer
280 FC	4-1227-0025-1	3018100



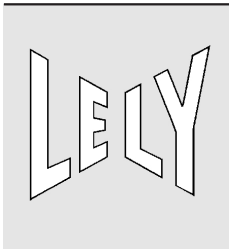
E228-03-01

REF.	ONDERDEELNR. PART NUMBER REFERENCE TEILNUMMER	AANTAL QUANTITY QUANTITE ANZAHL
------	--	--

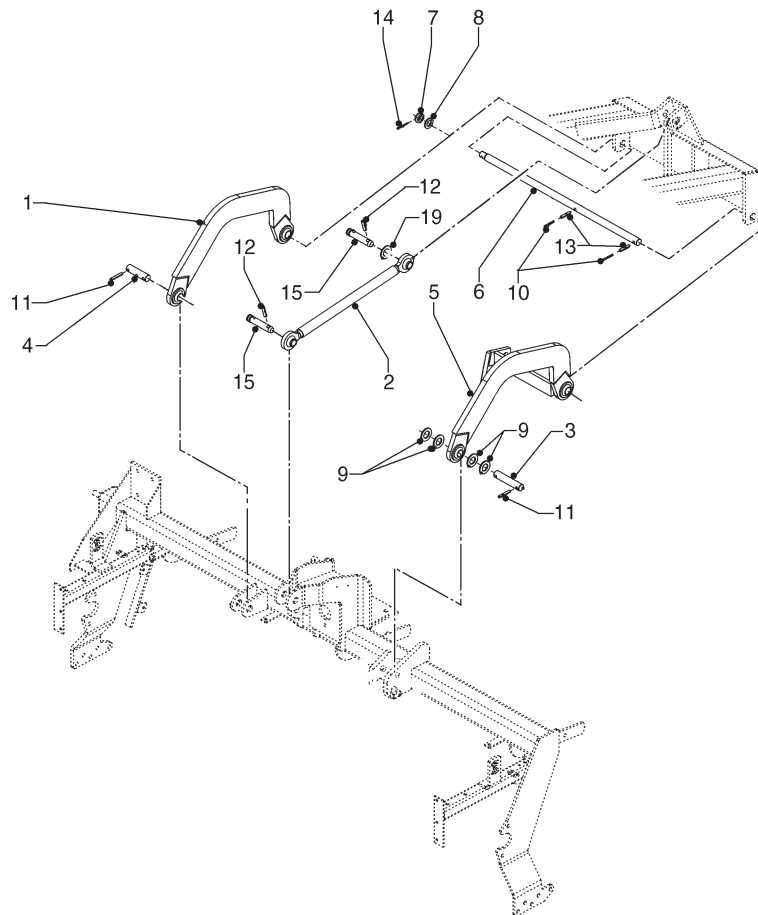
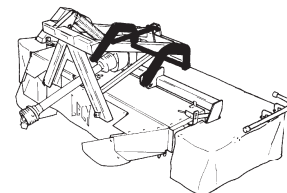
1	4.1210.1496.0	2
2	4.1211.0287.0	4
3	4.1227.0261.0	1
4	4.1227.0420.0	1
5	4.1227.0450.0	1 [L]
6	4.1227.0460.0	1 [R]
7	4.1227.0541.0	1 [R]
8	4.1227.0551.0	1 [L]
9	4.1227.1442.0	1
10	4.1227.1481.0	1
11	9.1030.0004*2	8 M10 DIN 985-8
12	9.1030.0012*3	12 M8 DIN 985-8
13	9.1030.0013*4	2 / 3 M12 DIN 985-8
14	9.1049.0020.6	8 Ø10,5 DIN 137 B
15	9.1054.0003.5	1 Ø8x260
16	9.1054.0004.6	1 Ø8x400
17	9.1108.0085.6	2 Ø32
18	9.1113.0014*6	4 M8x20 DIN 933-8.8
19	9.1113.0041*5	4 M10x70 DIN 931-8.8
20	9.1113.0050*0	2 / 3 M12x30 DIN 933-8.8
21	9.1113.0117*4	4 M10x35 DIN 933-8.8
22	9.1113.0128*1	4 M8x25 DIN 933-8.8
23	9.1147.0005*5	2
31	9.1029.0005.4	2 M10 DIN 934-8.8
32	9.1051.0002.0	2 A10,5 DIN 6798 [####]

REF.	ONDERDEELNR. PART NUMBER REFERENCE TEILNUMMER	AANTAL QUANTITY QUANTITE ANZAHL
------	--	--

33	9.1105.0011.4	2 K50x22,5-M10x28
34	9.1124.0001.3	2
45	9.1170.0173.3	1 "⊥↑"
46	9.1170.0419.4	1
47	9.1170.0449.6	1 "SPLENDIMO"
48	9.1170.0507.1	1 "280 FC"



SPLENDIMO	type number type number numéro de type Typnummer	vanaf serienummer as from serial number après numéro de serie ab Seriennummer
280 FC	4-1227-0025-1	3018100



E234-01-03

REF.	ONDERDEELNR. PART NUMBER REFERENCE TEILNUMMER	AANTAL QUANTITY QUANTITE ANZAHL	
------	--	--	--

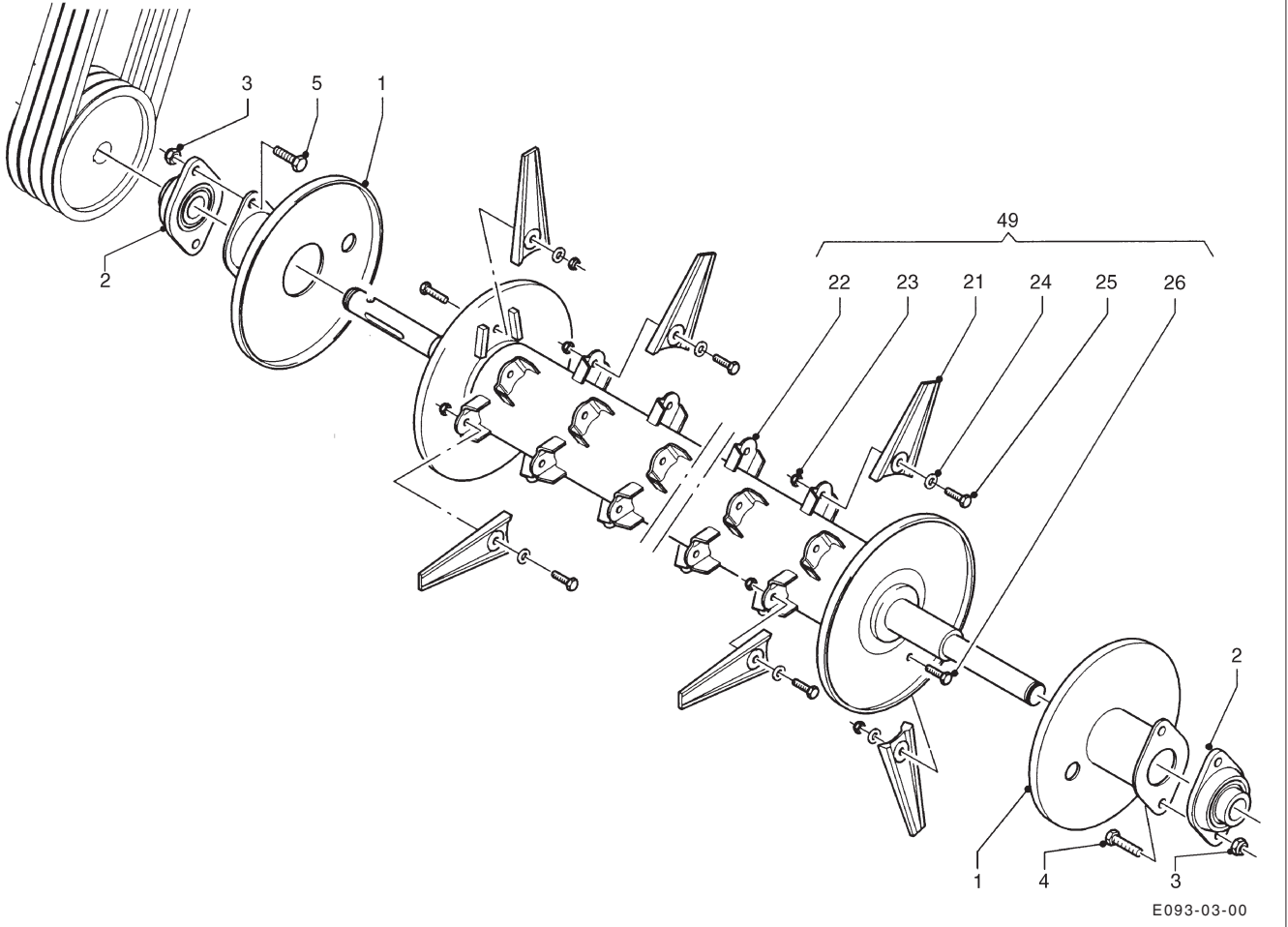
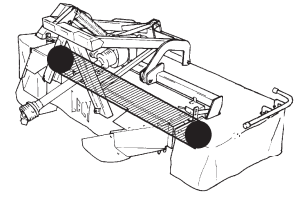
1	4.1227.0380.0	1	[L]
2	4.1227.0401.0	1	L= 650 mm
3	4.1227.1478.0	1	Ø28,6x145
4	4.1227.1479.0	1	
5	4.1255.0390.0	1	[R]
6	4.1255.1487.0	1	
7	9.1031.0004.1	1	
8	9.1048.0020*0	1	A24 DIN 125
9	9.1048.0044*3	4	A31 DIN 125
10	9.1070.0019.5	2	Ø6x50 DIN 1481
11	9.1070.0028.0	4	Ø10x60 DIN 1481
12	9.1070.0030.2	2	Ø12x50 DIN 1481
13	9.1070.0039.4	2	Ø10x50 DIN 1481
14	9.1072.0007.5	1	5x45 DIN 94
15	9.1088.0005.1	2	25-95

REF.	ONDERDEELNR. PART NUMBER REFERENCE TEILNUMMER	AANTAL QUANTITY QUANTITE ANZAHL	
------	--	--	--





SPLENDIMO	type number	vanaf serienummer
	type number	as from serial number
	numéro de type	après numéro de série
	Typnummer	ab Seriennummer
280 FC	4-1227-0025-1	3018100



E093-03-00

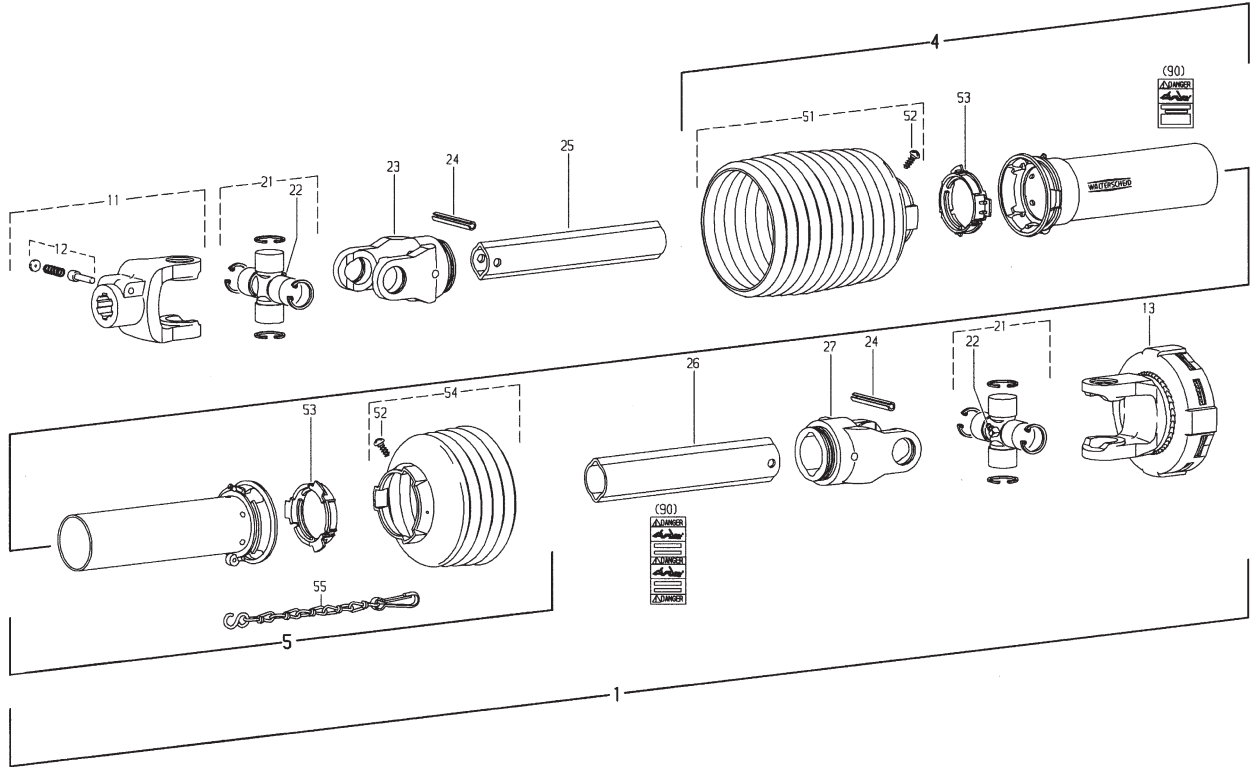
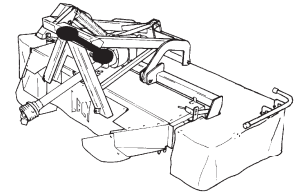
REF.	ONDERDEELNR. PART NUMBER REFERENCE TEILNUMMER	AANTAL QUANTITY QUANTITE ANZAHL
------	--	--

1	4.1220.1170.0	2	
2	9.1008.0018.3	2	FYTB 35FM-C3
3	9.1030.0015*6	4	M14 DIN 985-8
5	9.1113.0246*0	2	M14x55 DIN 931-8.8
21	4.1207.0228.0	95	
22	4.1220.1511.0	1	
23	9.1030.0004*2	95	M10 DIN 985-8
24	9.1048.0008*2	95	A10,5 DIN 9021 []
25	9.1113.0029*0	93	M10x25 DIN 933-8.8
26	9.1113.0120*0	2	M10x30 DIN 933-8.8
49	4.1220.1500.0	1	= REF. 21-26

REF.	ONDERDEELNR. PART NUMBER REFERENCE TEILNUMMER	AANTAL QUANTITY QUANTITE ANZAHL
------	--	--



SPLENDIMO	type number type number numéro de type Typnummer	vanaf serienummer as from serial number après numéro de serie ab Seriennummer
280 FC	4-1227-0025-1	3018100



Ew006-03-01

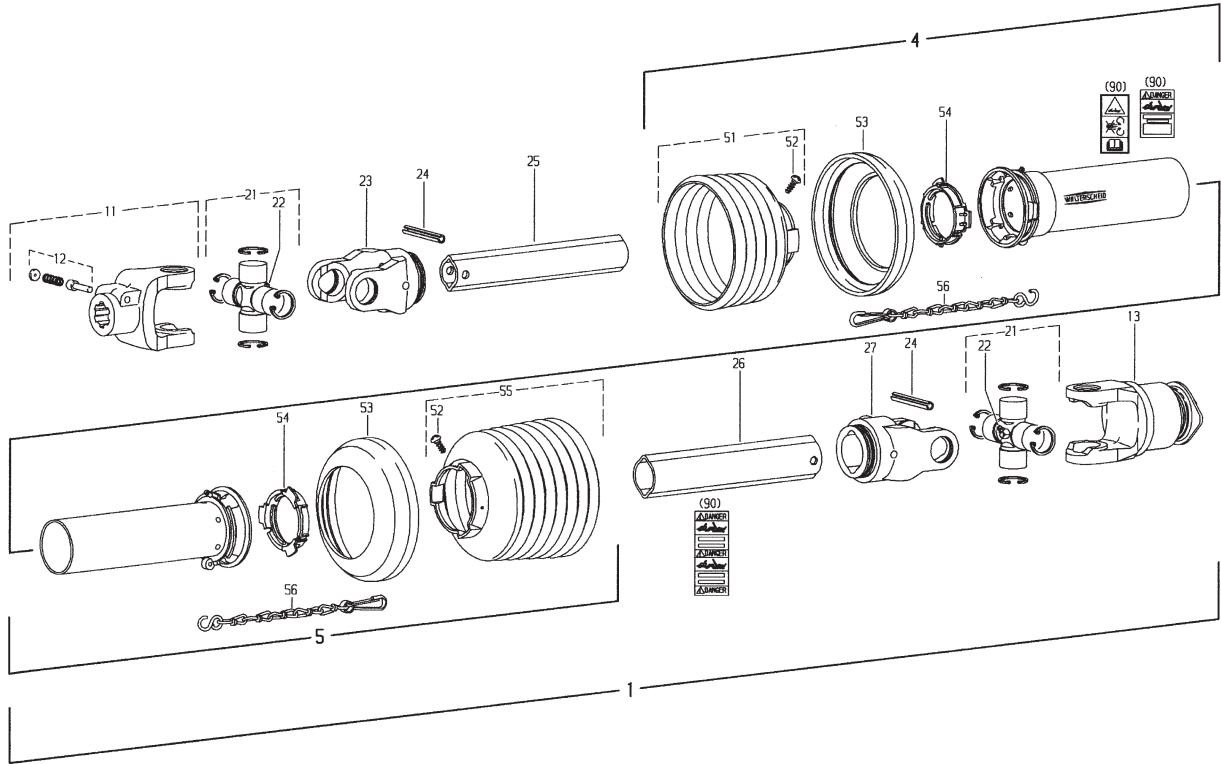
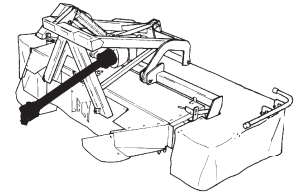
REF.	ONDERDEELNR. PART NUMBER REFERENCE TEILNUMMER	AANTAL QUANTITY QUANTITE ANZAHL	
------	--	--	--

1	9.1154.0178.3	1	W2300-SC15SW-460-K92 900Nm = REF. 11-90
	9.1154.0200.4	(1)	W2300-SC15SW-460-K92/4 [x] 1050Nm = REF. 11-90
4	85.135	1	SDH15SW-A270-RP12-K
5	85.134	1	SDH15SW-J270-RP12-K
11	21.10.00	1	AG 2300-1.3/8" (6)
12	33.91.07	1	AGRASET 101
13	56.219.16	1	K92-2300-1.3/8" (6)ZV M= 900Nm
	56.218.16	(1)	K92/4-2300-1.3/8" (6)ZV M= 1050Nm
21	21.00.00	2	
22	63.27.00	2	BM 8x1
23	21.11.00	1	RG 2300-Ov
24	61.05.04	2	Ø10x65 DIN 1481
25	75.11.16	1	Ov-340
26	75.15.16	1	L-325
27	21.12.00	1	RG 2300-1
51	85.15.42	1	n= 12
52	60.15.00	2	4x10
53	82.83.06	2	
54	85.15.36	1	n= 6
55	82.36.03	1	
90	11.87.45	1	AGRASET 207

REF.	ONDERDEELNR. PART NUMBER REFERENCE TEILNUMMER	AANTAL QUANTITY QUANTITE ANZAHL	
------	--	--	--



SPLENDIMO	type number type number numéro de type Typnummer	vanaf serienummer as from serial number après numéro de série ab Seriennummer
280 FC	4-1227-0025-1	3018100



Ew001-07-01

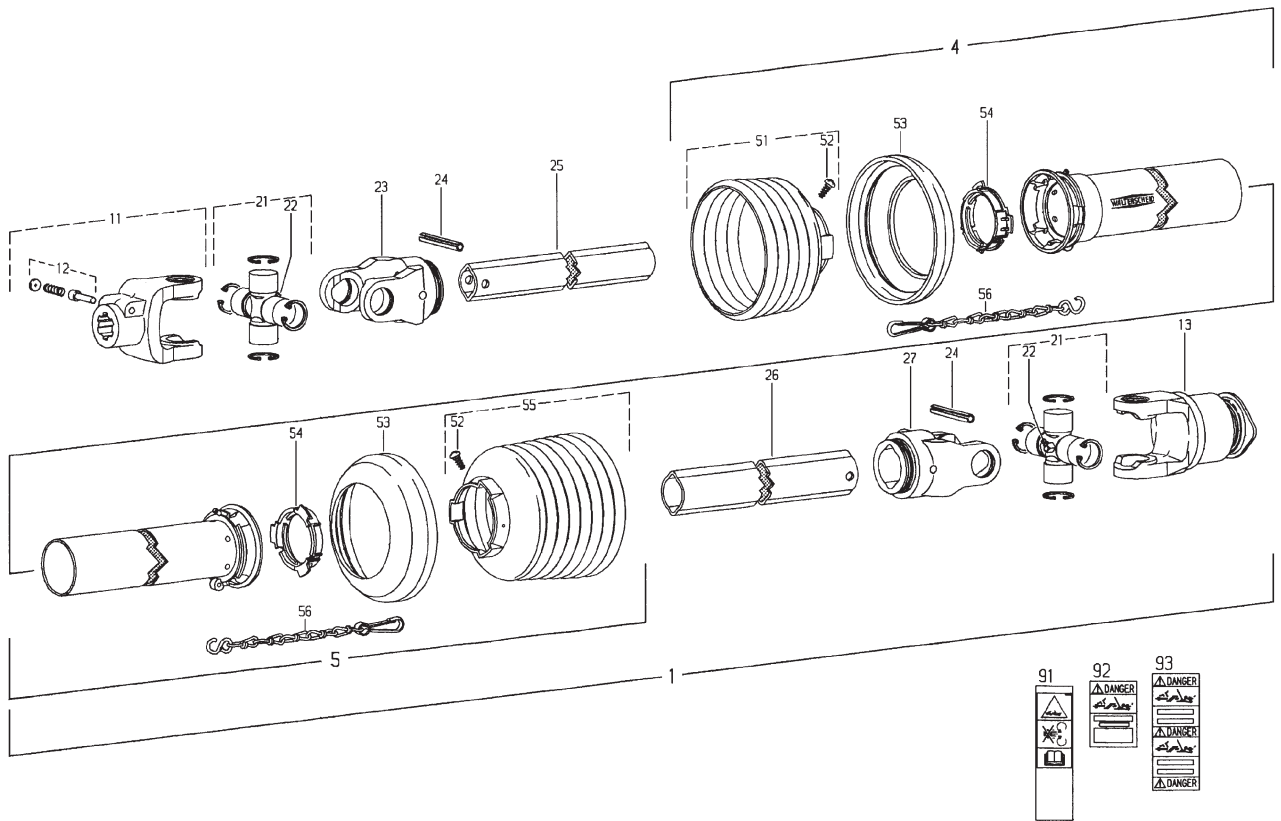
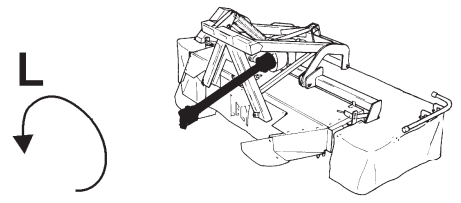
REF.	ONDERDEELNR. PART NUMBER REFERENCE TEILNUMMER	AANTAL QUANTITY QUANTITE ANZAHL	
------	--	--	--

1	9.1154.0215.5		W2400-SD25SW-860-F5/1L = REF. 11-90 1000/min. ⚙ = REF. 11-90 540/min. ⚙
4	85.235	1	SDH25SW-A645-RP12-K
5	85.234	1	SDH25SW-J645-RP12-K
11	35.10.00	1	AG2400-1.3/8" (6)
12	33.91.07	1	AGRASET 101
13	56.137.40	1	F5/1L-2400-1.3/8" (6)ZV
21	35.00.00	2	
22	63.27.00	2	BM8x1
23	35.13.00	1	RG2400-1b
24	61.05.08	2	Ø10x80 DIN 1481
25	75.25.95	1	1bGA-740
26	75.36.15	1	2aG-715
27	35.14.00	1	RG2400-1
51	85.25.36	1	n= 6
52	60.15.00	2	4x10
53	82.85.00	2	
54	82.83.04	2	
55	85.25.38	1	n= 8
56	82.36.03	2	
90	11.87.45	1	AGRASET 207

REF.	ONDERDEELNR. PART NUMBER REFERENCE TEILNUMMER	AANTAL QUANTITY QUANTITE ANZAHL	
------	--	--	--



SPLENDIMO	type number type number numéro de type Typnummer	vanaf serienummer as from serial number après numéro de série ab Seriennummer
280 FC	4-1227-0025-1	3018100

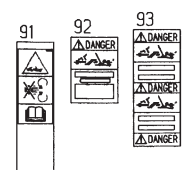


Ew001-06-02

REF.	ONDERDEELNR. PART NUMBER REFERENCE TEILNUMMER	AANTAL QUANTITY QUANTITE ANZAHL	
------	--	--	--

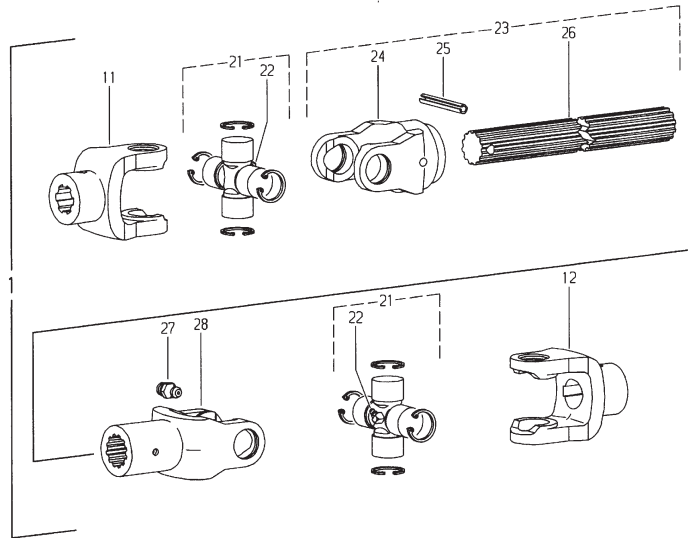
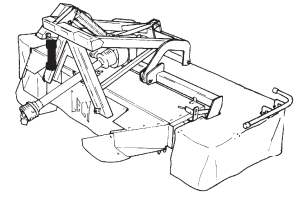
1	9.1154.0209.6		W2400-SD25SW-860-F5/1R = REF. 11-90 540/min. ↻ = REF. 11-90 1000/min. ↻
4	85.235	1	SDH25SW-A645-RP12-K
5	85.234	1	SDH25SW-J640-RP12-K
11	35.10.00	1	AG2400-1.3/8" (6)
12	33.91.07	1	AGRASET 101
13	56.144.40	1	F5/1 R-2400-1.3/8" (6)ZV
21	35.00.00	2	
22	63.27.00	2	BM8x1
23	35.13.00	1	RG2400-1b
24	61.05.08	2	Ø10x80 DIN 1481
25	75.25.95	1	1BGA-740
26	75.36.15	1	2AG-715
27	35.14.00	1	RG2400-2a
51	85.25.36	1	n= 6
52	60.15.00	2	4x10
53	82.85.00	2	
54	82.83.04	2	
55	85.25.38	1	n= 8
56	82.36.03	2	
90	11.87.45	1	AGRASET 207

REF.	ONDERDEELNR. PART NUMBER REFERENCE TEILNUMMER	AANTAL QUANTITY QUANTITE ANZAHL	
------	--	--	--



LELY

SPLENDIMO	type number type number numéro de type Typnummer	vanaf serienummer as from serial number après numéro de serie ab Serienummer
280 FC	4-1227-0025-1	3018100



Ew009-01-01

REF.	ONDERDEELNR. PART NUMBER REFERENCE TEILNUMMER	AANTAL QUANTITY QUANTITE ANZAHL	
------	--	--	--

1	4.1227.0219.0	1	W3100-260 = REF. 11-28
11	10.22.368	1	NG2100 1.3/8" (6)
12	10.40.110	1	NG2100 Ø35
21	10.01.02	2	2100 "S"
22	63.27.00	2	BM 8x1
23	10.48.113	1	WELG2100-25x22(14)H-24I
24	10.48.108	1	RG2100-25x22 (14)
25	9.1070.0022.1	1	Ø8x45 ISO 8752
26	67.70.02	1	25x22(14) H-205
27	63.13.02	1	A 1/4 UNF
28	10.25.00	1	NG2100-25x22 (14)

REF.	ONDERDEELNR. PART NUMBER REFERENCE TEILNUMMER	AANTAL QUANTITY QUANTITE ANZAHL	
------	--	--	--