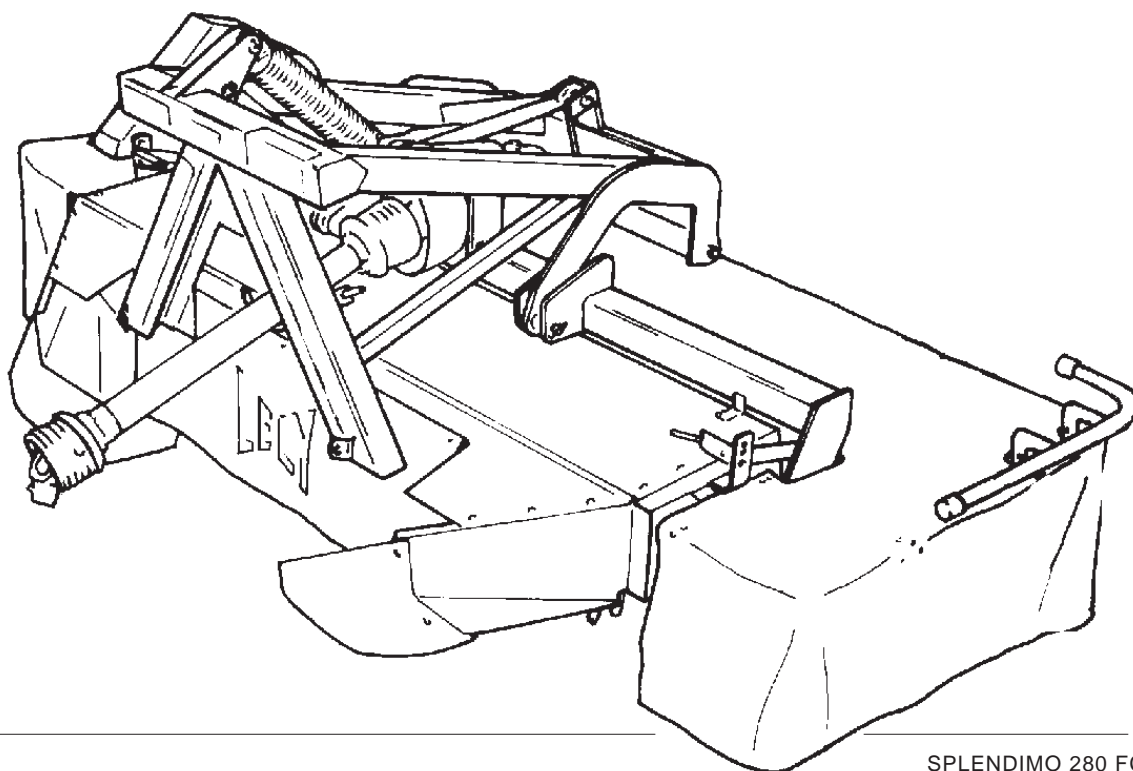


LELY

HIGH - TECH
IN AGRICULTURE

ONDERDELENLIJST PARTS LIST LISTE DE PIECES DE RECHANGE ERSATZTEILLISTE

SPLENDIMO FC



SPLENDIMO 280 FC

| SPLENDIMO | type number type number numéro de type Typennummer | vanaf serienummer as from serial number après numéro série ab Seriennummer | SPLENDIMO | type number type number numéro de type Typennummer | vanaf serienummer as from serial number après numéro série ab Seriennummer |
|-----------|--|---|-----------|--|---|
| 240 FC | 4.1232.0014.1 4.1232.0015.1 4.1232.0016.1 4.1232.0017.1 4.1232.0018.1 | 3000000 3003242 3000000 3000589 3000000 | 320 FC | 4.1255.0000.1 4.1255.0001.1 4.1255.0002.1 4.1255.0003.1 4.1255.0004.1 4.1255.0005.1 4.1255.0006.1 4.1255.0007.1 | 10804 - 0511 10804 - 0539 10804 - 0520 3003496 3000000 3000000 3000000 3000000 |
| 280 FC | 4.1227.0017.1 4.1227.0018.1 4.1227.0019.1 4.1227.0020.1 4.1227.0021.1 4.1227.0023.1 | 3001070 3001080 10805 - 0513 3000756 3000000 3000000 | | | |



ONDERDELEN

Bij het bestellen van onderdelen is het belangrijk dat u het type- en serienummer van uw machine opgeeft.

Gebruik alleen originele LELY-onderdelen.

SPARE PARTS

When ordering spare parts, it is important that you indicate the type and serial number of your machine.

Use only genuine LELY parts.

PIECES DE RECHANGE

En commandant des pièces de rechange il importe que vous indiquiez les numéros de type et de série de votre machine.

N'utiliser que des pièces d'origines LELY.

ERSATZTEILE

Beim Bestellen von Ersatzteilen ist es wichtig, daß Sie die Typ- und Seriennummer Ihrer Maschine angeben.

Nur Original-LELY-Ersatzteile verwenden.

Typ- und Seriennummer in nebenstehende Abbildung eintragen. Bei künftigen Bestellungen haben Sie die Nummer dann griffbereit.

Vul het type- en serienummer hieronder in.

Bij toekomstige onderdelenbestellingen heeft u de nummers dan bij de hand.

Complete the box below with the type and serial number.

This is an easy reference with a view to future spare parts ordering.

Veillez noter, ci-dessous, les numéros de type et de serie.

Ceci est important pour toutes commandes de pièces de rechange.

| | | |
|-------------|---|-----------|
| LELY | LELY INDUSTRIES NV 3147 PA MAASSLUIS THE NETHERLANDS | CE |
| | kg | |
| Type | | |
| Ser.Nr. | | |

Verklaring van de in de onderdelenlijst gebruikte tekens.

Explanation of signs used in the parts list.

Explication des signes qui figurent dans la liste des pièces.

Erklärung der in der Ersatzteilliste verwendeten Zeichen.

[R] = RECHTSE UITVOERING
RH VERSION

[L] = LINKSE UITVOERING
LH VERSION

Onder rechtse of linkse uitvoering wordt de plaats van het onderdeel verstaan, gezien van de achterzijde van de machine.

By RH or LH version the position of the part is meant, seen from the rear of the machine

[RD] = RECHTSOM DRAAIENDE UITVOERING
RH ROTATING VERSION

[LD] = LINKSOM DRAAIENDE UITVOERING
LH ROTATING VERSION

Onder rechtsom of linksom draaiende uitvoering wordt de draairichting van het onderdeel verstaan, gezien van de bovenzijde van de machine.

By RH or LH rotating version the sense of rotating of the part is meant, seen from the top of the machine.

[x] = ONDERDEEL WORDT NIET GETOOND
PART IS NOT SHOWN

Bijvoorbeeld linkse uitvoering overeenkomstig de wel getekende rechtse uitvoering.

E.g. : LH version is similar to the RH version, which is actually shown.

[#] = NIET LOS LEVERBAAR
NOT AVAILABLE SEPARATELY

~ = AANTAL (INDIEN NODIG) AFHANKELIJK VAN INBOUWMAAT
QUANTITY (IF APPLICABLE) DEPENDING UPON ASSEMBLY

[—] = SLUITRING

[—/—] = VEERRING

[H/H] = TANDVEERRING

[>|<] = OLIEKEERRING

[T+T] = TANDWIELSET

[D+D] = VULRINGSET

[A+A] = SET AFDICHTINGSRINGEN

WASHER

SPRING WASHER

SHAKE-PROOF WASHER

OIL SEAL

PAIR OF GEARS

SHIM SET

SET OF SEALING RINGS

VERSION DROITE
RECHTE AUSFÜHRUNG

VERSION GAUCHE
LINKE AUSFÜHRUNG

Par version droite ou gauche on entend la position de la pièce, vue de l'arrière de la machine.

Die Verweisungen "rechte Ausführung" oder "linke Ausführung" geben die Position des Teils, von der Hinterseite der Maschine aus gesehen, an.

VERSION ROTATION A DROITE
RECHTSUMDREHENDE AUSFÜHRUNG

VERSION ROTATION A GAUCHE
LINKSUMDREHENDE AUSFÜHRUNG

Version rotation à droit: ceci correspond au sens de rotation de la pièce, vue du dessus la machine.

Mit diesen Verweisungen wird die Drehrichtung des Teils von der Oberseite der Maschine aus gesehen, angegeben.

PIECE N'EST PAS MONTREE
TEIL WIRD NICHT GEZEIGT

Exemple : la version gauche est représentée. La version droite correspond à la version gauche, mais n'est pas représentée.

Beispiel : die linke Ausführung entspricht der effektiv gezeigten Rechten.

VENDU EN KIT UNIQUEMENT
NICHT SEPARAT LIEFERBAR

QUANTITE (SI NÉCESSAIRE) EN FONCTION DU MONTAGE
ANZAHL VOM EINBAUMASS ABHÄNGIG (WENN ERFORDERLICH)

RONDELLE PLATE

RONDELLE GROWER

RONDELLE EVENTAIL

ETANCHEITE

JEU D'ENGRENAGES

JEU D'ÉPAISSEURS

JEU D'ANNEAUX D'ETANCHEITE

UNTERLEGSCHIBE

FEDERRING

RÄNDELFEDERRING

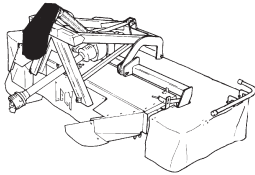
ÖLDICHTUNGSRING

ZAHNRÄDERSATZ

PASSCHIEBENSATZ

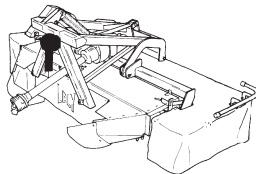
DICHTUNGSRINGENSATZ

SPLENDIMO FC - 240/280/320



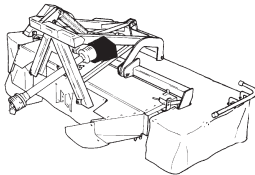
Snaaraandrijving
V-belt drive
Entraînement à courroies
Keilriemenantrieb

01+02



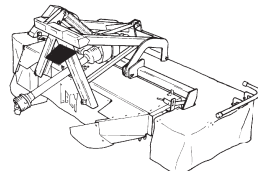
Tandwielkast eerste maaielement
Gearbox of first cutting unit
Boîte d'engrenages
première unité de fauchage
Getriebe der ersten Mäh-Einheit

03



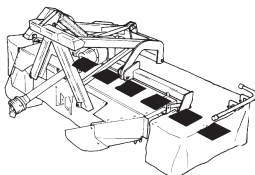
Tandwielkast aandrijving
Gearbox transmission
Boîte d'engrenages Entraînement
Getriebe Antrieb

04



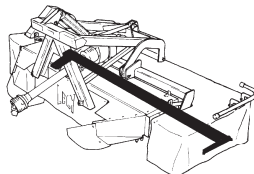
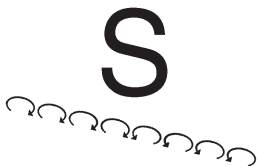
Eerste maaielement
First cutting unit
Première unité de fauchage
Erste Mäh-Einheit

05



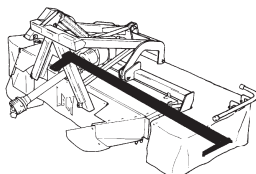
Maaielementen
Cutting units
Unités de fauchage
Mäh-Einheiten

06



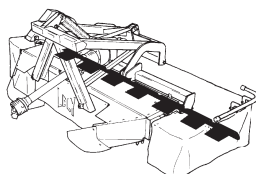
Maaibalk + slijtsloffen
Cutter bar + wear skids
Barre de coupe + patins d'usure
Mähbalken + Verschleißkufen

07



Maaibalk + slijtsloffen
Cutter bar + wear skids
Barre de coupe + patins d'usure
Mähbalken + Verschleißkufen

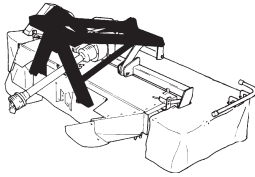
08



Glijtsloffen + maaibalkbescherming
Skids + cutter bar protection
Patins + protection-barre
Kufen + Mähwerkschutz

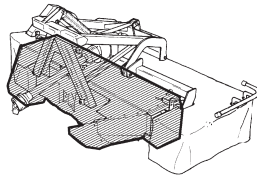
09

SPLENDIMO FC - 240/280/320



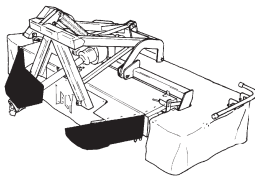
Driepuntsbok + hydraulische cilinder
Headstock + hydraulic ram
Tête d'attelage + vérin hydraulique
Dreipunktturm + Hydraulikzylinder

10+11



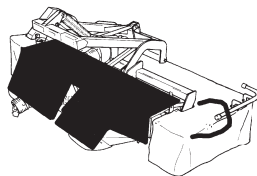
Kneuzerkap
Conditioner hood
Capot conditionneuse
Aufbereiterhaube

12+13



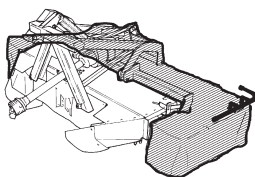
Zwadbord
Swathboard
Planche à andain
Schwadbrett

14



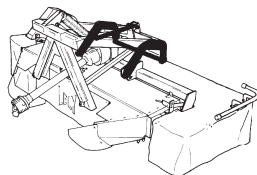
Gewasscheider + spreidplaten
Crop driver + Spreadings fins
Diviseur de végétation + Volets éparpilleurs
Erntetrenner + Breitverteiler

15



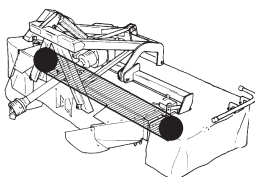
Kneuzerfreem
Conditioner frame
Châssis de conditionneuse
Aufbereiterrahmen

16



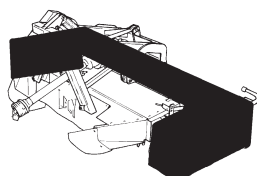
Hefinrichting
Lever arm
Bras d'élévation
Hebearm

17



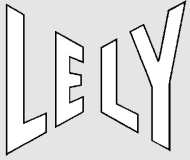
Rotor
Rotor
Rotor
Rotor

18



Beveiligingsfreem
Protection frame
Châssis de protection
Schutzrahmen

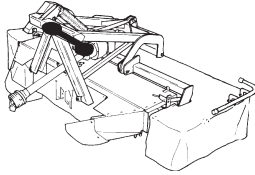
19+20



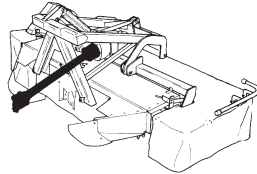
Inhoud
Contents
Index
Inhalt

SPLENDIMO FC - 240/280/320

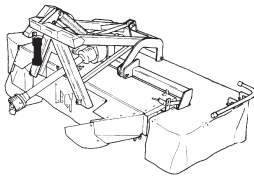
pagina
page
page
Seite



Koppelingsas (maaibalk + rotor) 21-23
PTO shaft (cutter bar + rotor)
Arbre de transm. (barre de coupe + rotor)
Gelenkwelle (Mähbalken + Rotor)



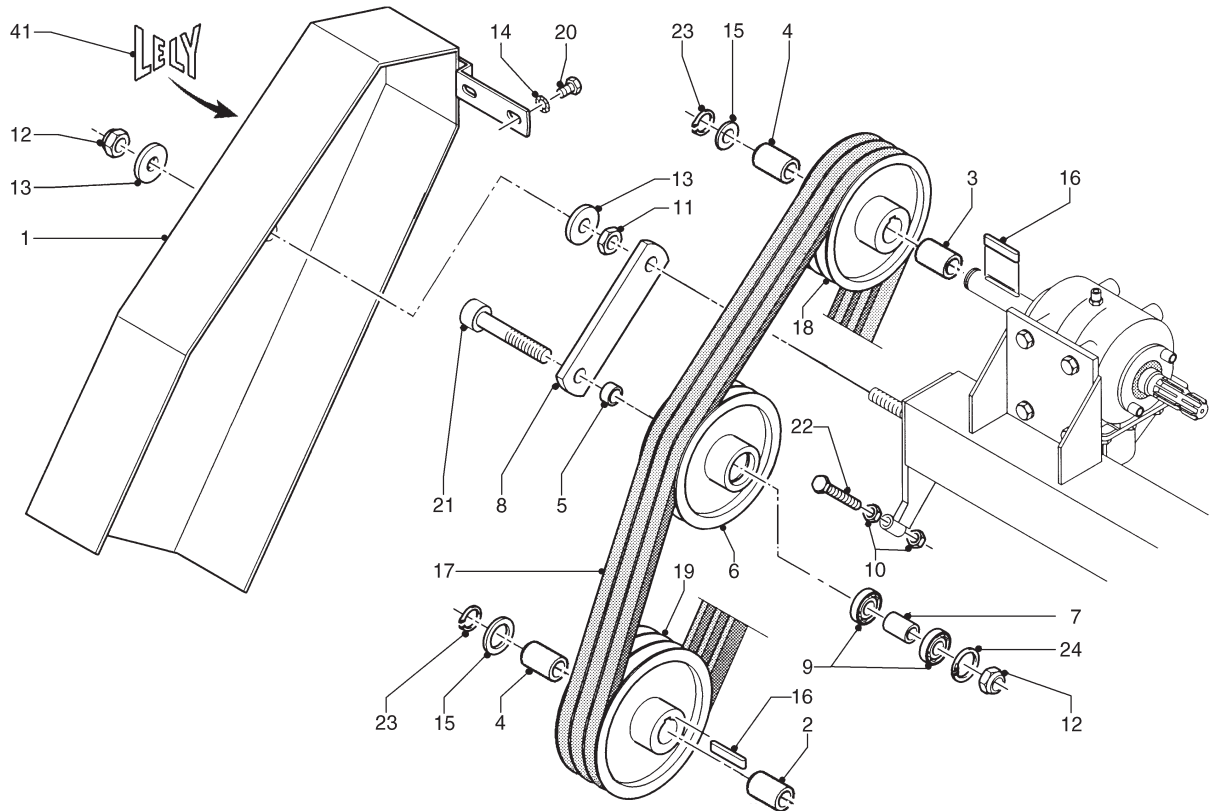
Koppelingsas 24-26
PTO shaft
Arbre de transmission
Gelenkwelle



Koppelingsas (eerste maaiement) 27
PTO shaft (first cutting unit)
Arbre de transm. (1ère unité de fauchage)
Gelenkwelle (erste Mäh-Einheit)

LELY

| SPLENDIMO | type number type number numéro de type Typnummer | vanaf serienummer as from serial number après numéro de série ab Seriennummer | SPLENDIMO | type number type number numéro de type Typnummer | vanaf serienummer as from serial number après numéro de série ab Seriennummer |
|-----------|---|--|---------------|---|--|
| 240 FC | 4.1232.0014.1 | 3000000 | 280 FC | 4.1227.0017.1 | 3001070 |
| | 4.1232.0015.1 | 3003242 | | 4.1227.0018.1 | 3001080 |
| | 4.1232.0016.1 | 3000000 | | 4.1227.0019.1 | 10805 - 0513 |
| | 4.1232.0017.1 | 3000589 | | 4.1227.0020.1 | 3000756 |
| | 4.1232.0018.1 | 3000000 | | 4.1227.0021.1 | 3000000 |
| | | | 4.1227.0023.1 | 3000000 | |



E088-03-00

| REF. | ONDERDEELNR. PART NUMBER REFERENCE TEILNUMMER | AANTAL QUANTITY QUANTITE ANZAHL |
|------|--|--|
|------|--|--|

| | | |
|----|---------------|-----|
| 1 | 4.1227.0470.0 | 1 |
| 2 | 4.1227.1436.0 | 1 |
| 3 | 4.1227.1438.0 | 1 |
| 4 | 4.1227.1439.0 | 2 |
| 5 | 4.1227.1466.0 | 1 |
| 6 | 4.1227.1482.0 | 1 |
| 7 | 4.1227.1484.0 | 1 |
| 8 | 4.1227.1485.0 | 1 |
| 9 | 9.1001.0005.4 | 2 |
| 10 | 9.1029.0012*4 | 2 |
| 11 | 9.1029.0016*1 | 1 |
| 12 | 9.1030.0017*1 | 2 |
| 13 | 9.1048.0055*0 | 2 |
| 14 | 9.1051.0003*1 | 2 |
| 15 | 9.1052.0006*3 | 2 |
| 16 | 9.1071.0055.5 | 2 |
| 17 | 9.1075.0014.2 | 3 |
| | 9.1075.0022.3 | (3) |
| 18 | 9.1075.0107.4 | 1 |
| 19 | 9.1075.0108.5 | 1 |
| | 9.1075.0107.4 | (1) |
| 20 | 9.1113.0047*4 | 2 |
| 21 | 9.1113.0097*5 | 1 |
| 22 | 9.1113.0300*5 | 1 |
| 23 | 9.1119.0019.5 | 2 |
| 24 | 9.1120.0002.1 | 1 |

| REF. | ONDERDEELNR. PART NUMBER REFERENCE TEILNUMMER | AANTAL QUANTITY QUANTITE ANZAHL |
|------|--|--|
|------|--|--|

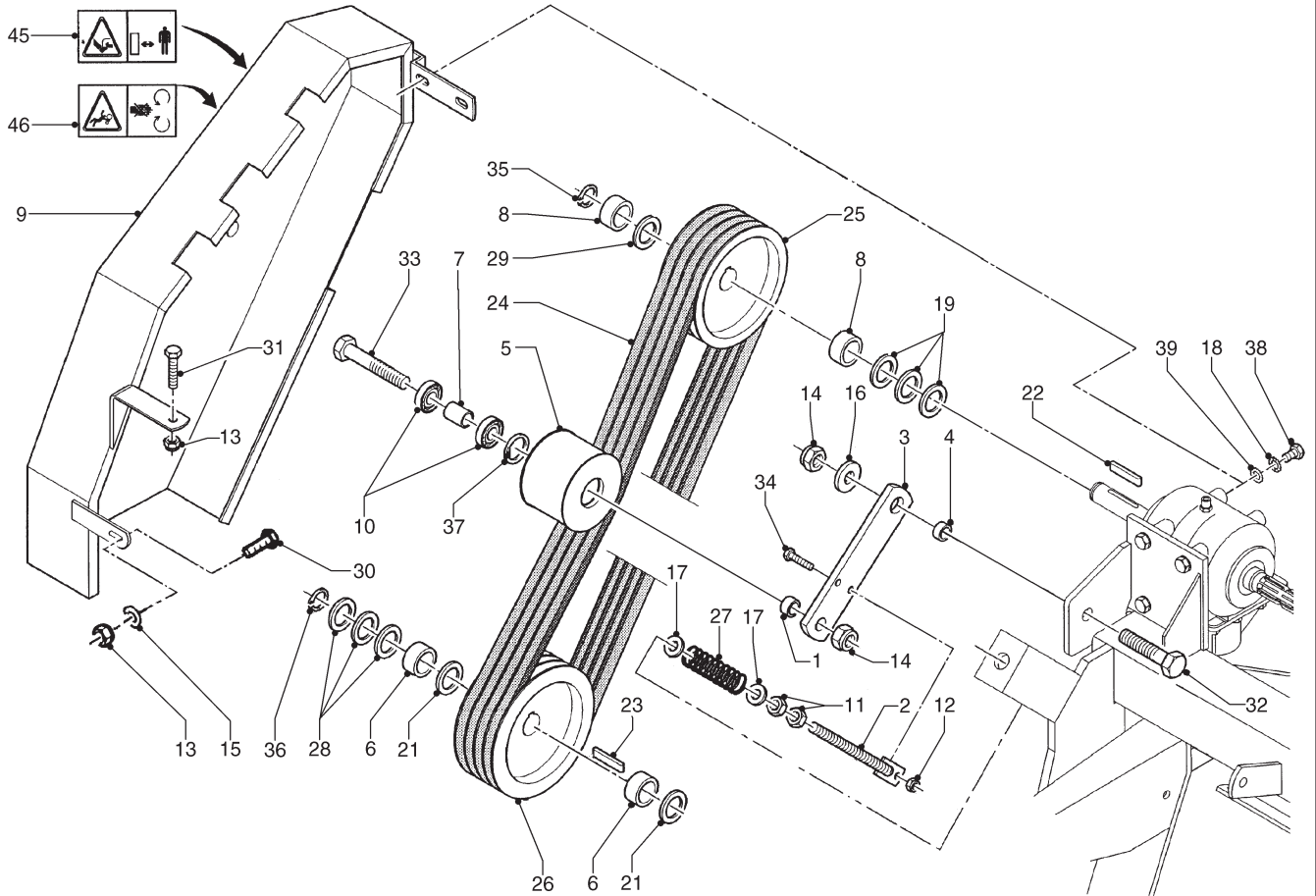
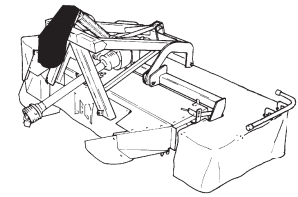
| | | |
|----|---------------|---|
| 41 | 9.1170.0200.2 | 2 |
|----|---------------|---|

"LELY"

LELY

SPLENDIMO
320 FC

| type number type number numéro de type Typnummer | vanaf serienummer as from serial number après numéro de série ab Seriennummer |
|---|--|
| B | 10804 - 0511 |
| B | 10805 - 0539 |
| B | 10805 - 0520 |
| A | 3003496 |
| A | 3000000 |
| A | 3000000 |
| A | 3000000 |
| A | 3000000 |
| A | 3000000 |



E117-03-00

| REF. | ONDERDEELNR. PART NUMBER REFERENCE TEILNUMMER | AANTAL QUANTITY QUANTITE ANZAHL | | |
|------|--|--|--|--|
|------|--|--|--|--|

 900/min
1000/min

| | | | | | |
|----|------------------------|---|---|--------------------|---------|
| 1 | 4.1227.1466.0 | 1 | 1 | Ø27x12,5 | |
| 2 | 4.1241.1400.0 | 1 | 1 | | |
| 3 | 4.1241.1430.0 | 1 | 1 | | |
| 4 | 4.1241.1922.0 | 1 | 1 | Ø27x20 | |
| 5 | 4.1241.1928.0 | 1 | 1 | | |
| 6 | 4.1241.1940.0 | 2 | 2 | Ø51x20 | |
| 7 | 4.1241.1946.0 | 1 | 1 | Ø27x35 | |
| 8 | 4.1251.1488.0 | 2 | 2 | Ø50x21 | |
| 9 | 4.1255.0320.0 | 1 | 1 | | |
| 10 | 9.1001.0005.4 | 2 | 2 | 6204-2RS1 | |
| 11 | 9.1029.0013*5 | 2 | 2 | M16 DIN 934-8 | [] |
| 12 | 9.1030.0004*2 | 1 | 1 | M10 DIN 985-8 | [] |
| 13 | 9.1030.0013*4 | 2 | 2 | M12 DIN 985-8 | [] |
| 14 | 9.1030.0017*1 | 2 | 2 | M20 DIN 985-8 | [] |
| 15 | A 9.1048.0012.6 | 1 | 1 | A13 DIN 125 | [] |
| | B 9.1048.0012.6 | 2 | 2 | A13 DIN 125 | [] |
| 16 | 9.1048.0019*6 | 1 | 1 | A21 DIN 125 | [] |
| 17 | 9.1048.0068.6 | 2 | 2 | A21 DIN 7349 | [] |
| 18 | 9.1051.0003.1 | 2 | 2 | A12,5 DIN 6798 | [#####] |
| 19 | 9.1052.0006.3 | 3 | 3 | 35x45x2,5 DIN 988 | |
| 20 | 9.1052.0019.2 | 2 | 2 | S40x50x1,0 DIN 988 | |
| 21 | 9.1052.0020.3 | - | 2 | S40x50x2,5 DIN 988 | |
| 22 | 9.1071.0055.5 | 1 | 1 | B10x8x45 DIN 6885 | |

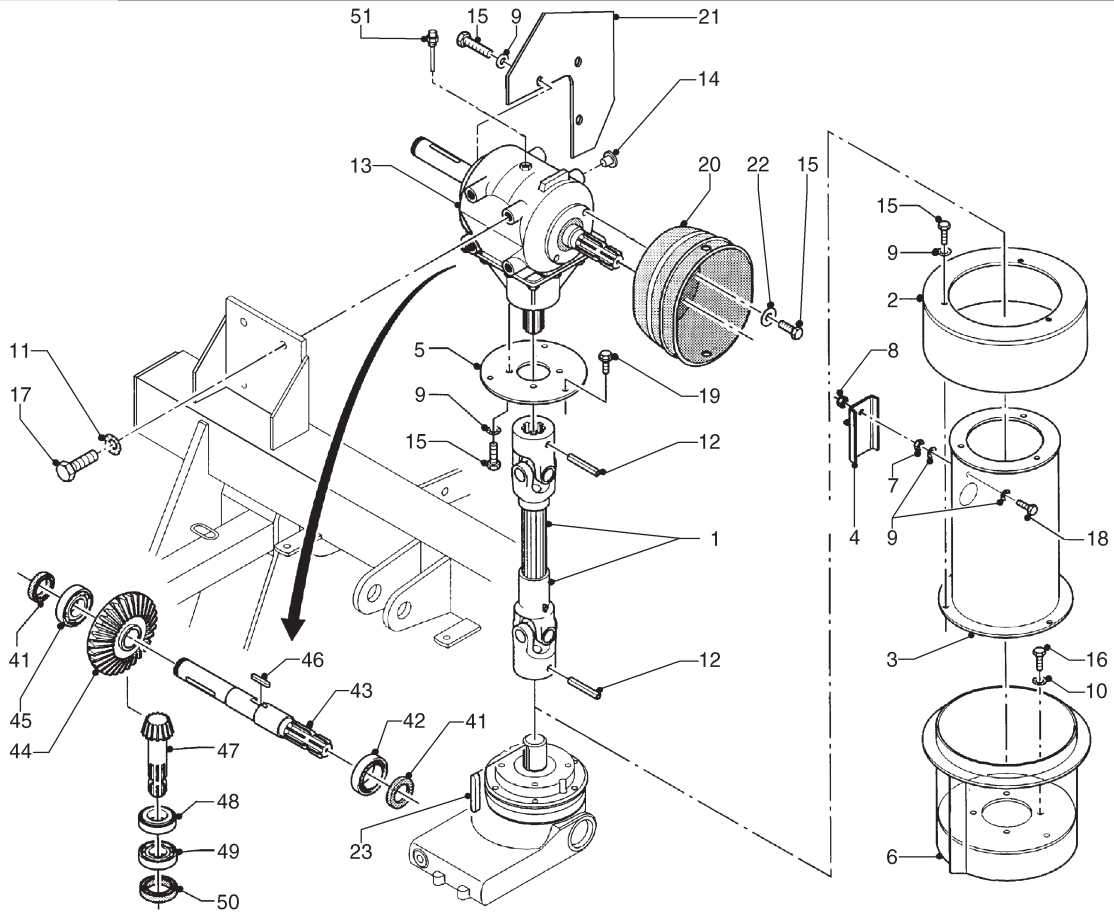
| REF. | ONDERDEELNR. PART NUMBER REFERENCE TEILNUMMER | AANTAL QUANTITY QUANTITE ANZAHL | | |
|------|--|--|--|--|
|------|--|--|--|--|

 900/min
1000/min

| | | | | | |
|----|------------------------|---|---|-----------------------|-----|
| 23 | A 9.1071.0056.6 | 1 | - | B12x8x50 DIN 6885 | |
| | 9.1071.0057.0 | - | 1 | [x]B12x8x45 DIN 6885 | |
| 24 | A 9.1075.0020.1 | 4 | - | SPB Lw= 1850 | |
| | 9.1075.0014.2 | - | 4 | [x]SPB Lw= 1800 | |
| 25 | 9.1075.0105.2 | 1 | 1 | 180 SPB4 GY | |
| 26 | A 9.1075.0106.3 | 1 | - | 200 SPB4 GY | |
| | 9.1075.0110.0 | - | 1 | [x]180 SPB4 GY | |
| 27 | 9.1090.0026.6 | 1 | 1 | | |
| 28 | 9.1093.0009.0 | 3 | 3 | 40x50x1 DIN 988 | |
| 29 | 9.1093.0059.1 | 1 | 1 | 35x45x1.0 DIN 988 | |
| 30 | 9.1113.0049*6 | 1 | 1 | M12x25 DIN 933-8.8 | |
| 31 | 9.1113.0059*2 | 1 | 1 | M12x70 DIN 933-8.8 | |
| 32 | 9.1113.0091*6 | 1 | 1 | M20x55 DIN 933-8.8 | |
| 33 | 9.1113.0097*5 | 1 | 1 | 35x45x1.0 DIN 931-8.8 | |
| 34 | 9.1113.0120*0 | 1 | 1 | M10x30 DIN 933-8.8 | |
| 35 | 9.1119.0019.5 | 1 | 1 | 35x2,5 DIN 471 | |
| 36 | 9.1119.0026.5 | 1 | 1 | 40x2,5 DIN 471 | |
| 37 | 9.1120.0002.1 | 1 | 1 | 47x1,75 DIN 472 | |
| 38 | 9.1113.0047*4 | 2 | 2 | M12x20 DIN 933-8.8 | |
| 39 | A 9.1048.0012.6 | 2 | 2 | A13 DIN 125 | [] |
| | B 9.1048.0012.6 | - | - | A13 DIN 125 | [] |
| 45 | 9.1170.0407.6 | 1 | 1 | | |
| 46 | 9.1170.0419.4 | 1 | 1 | | |



| SPLENDIMO | type number type number numéro de type Typnummer | vanaf serienummer as from serial number après numéro de serie ab Seriennummer | SPLENDIMO | type number type number numéro de type Typnummer | vanaf serienummer as from serial number après numéro de serie ab Seriennummer | |
|-----------|---|--|-----------|---|--|--------------|
| 240 FC | 4.1232.0014.1 | 3000000 | 280 FC | A | 4.1227.0023.1 | |
| | 4.1232.0015.1 | 3003242 | | | | |
| | 4.1232.0016.1 | 3000000 | | | | |
| | 4.1232.0017.1 | 3000589 | | | | |
| | 4.1232.0018.1 | 3000000 | | | | |
| 280 FC | 4.1227.0017.1 | 3001070 | A | A | 4.1255.0000.1 | |
| | 4.1227.0018.1 | 3001080 | | | | |
| | 4.1227.0019.1 | 10805 - 0513 | | | | |
| | 4.1227.0020.1 | 3000756 | | | | |
| | 4.1227.0021.1 | 3000000 | | | | |
| 320 FC | A | A | A | A | 4.1255.0001.1 | |
| | | | | | | 10804 - 0511 |
| | | | | | | 10805 - 0539 |
| | | | | | | 10805 - 0520 |
| | | | | | | 3003496 |
| A | A | A | A | A | 4.1255.0002.1 | |
| | | | | | | 3000000 |
| | | | | | | 3000000 |
| | | | | | | 3000000 |
| | | | | | | 3000000 |
| A | A | A | A | A | 4.1255.0003.1 | |
| | | | | | | 3000000 |
| | | | | | | 3000000 |
| | | | | | | 3000000 |
| | | | | | | 3000000 |
| A | A | A | A | A | 4.1255.0004.1 | |
| | | | | | | 3000000 |
| | | | | | | 3000000 |
| | | | | | | 3000000 |
| | | | | | | 3000000 |
| A | A | A | A | A | 4.1255.0005.1 | |
| | | | | | | 3000000 |
| | | | | | | 3000000 |
| | | | | | | 3000000 |
| | | | | | | 3000000 |
| A | A | A | A | A | 4.1255.0006.1 | |
| | | | | | | 3000000 |
| | | | | | | 3000000 |
| | | | | | | 3000000 |
| | | | | | | 3000000 |
| A | A | A | A | A | 4.1255.0007.1 | |
| | | | | | | 3000000 |
| | | | | | | 3000000 |
| | | | | | | 3000000 |
| | | | | | | 3000000 |



E090-05-00

| REF. | ONDERDEELNR. PART NUMBER REFERENCE TEILNUMMER | AANTAL QUANTITY QUANTITE ANZAHL |
|------|--|--|
|------|--|--|

240 280 320

| | | |
|----|---------------|-------------------------------------|
| 1 | 4.1227.0219.0 | 1 1 1 = REF. 1 Pag. 25 |
| 2 | 4.1227.0441.0 | 1 1 1 |
| 3 | 4.1227.0660.0 | 1 1 1 |
| 4 | 4.1227.1457.0 | 1 1 1 |
| 5 | 4.1227.1467.0 | 1 1 1 |
| 6 | 4.1256.0440.0 | 1 1 1 |
| 7 | 9.1029.0004*3 | 1 1 1 M8 DIN 934-8 |
| 8 | 9.1030.0012*3 | 1 1 1 M8 DIN 985-8 |
| 9 | 9.1051.0001*6 | 13 13 11 A8,2 DIN 6798 [#####] |
| 10 | 9.1051.0002*0 | 4 4 4 A10,5 DIN 6798 [#####] |
| 11 | 9.1051.0003*1 | 4 4 4 A12,5 DIN 6798 [#####] |
| 12 | 9.1070.0028.0 | 2 2 2 Ø10x60 DIN 1481 |
| 13 | 9.1083.0009.3 | 1 1 1 1:3 - 1.3/8"(6)-Ø35-1.3/8"(6) |
| | 9.1171.0042.4 | (0,85 L) (0,85 L) 1L GX 85W-140 |
| | 9.1171.0042.4 | (0,85 L) 1L GX 85W-140 |
| 14 | 9.1108.0036.6 | 4 4 - Ø10,75x5,5 |
| | 9.1108.0058.0 | - - 4 Ø14,6x5,5 |
| 15 | 9.1113.0013*5 | 15 15 13 M8x16 DIN 933-8.8 |
| 16 | 9.1113.0026*4 | 4 4 4 M10x16 DIN 933-8.8 |
| 17 | 9.1113.0050*0 | 4 4 4 M12x30 DIN 933-8.8 |
| 18 | 9.1113.0128*1 | 1 1 1 M8x25 DIN 933-8.8 |
| 19 | 9.1114.0009*0 | 3 3 3 M10x30 8-8 |
| 20 | 4.1227.1434.0 | 1 1 - 900Nm |
| A | 4.1241.1930.0 | (1) (1) 1 [x]1050Nm |

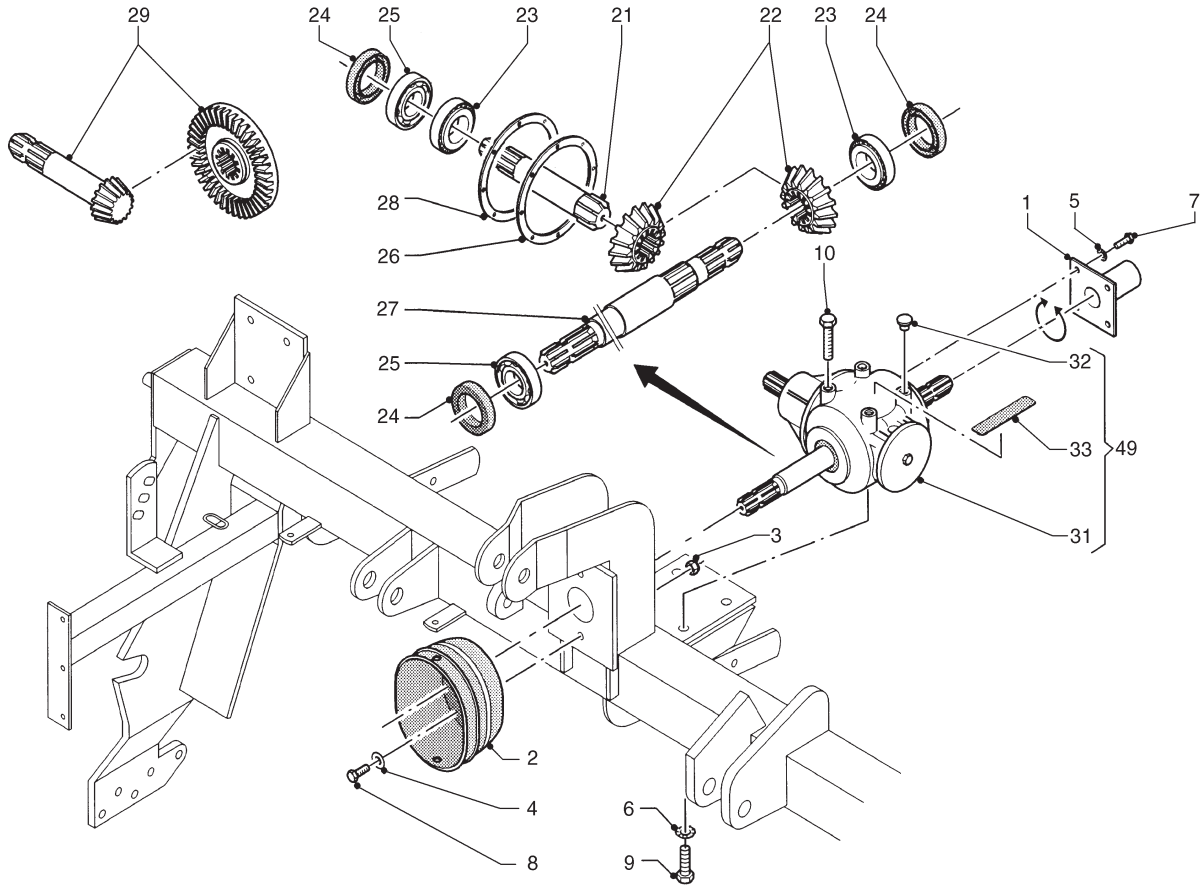
| REF. | ONDERDEELNR. PART NUMBER REFERENCE TEILNUMMER | AANTAL QUANTITY QUANTITE ANZAHL |
|------|--|--|
|------|--|--|

240 280 320

| | | |
|----|---------------|-------------------------------|
| 21 | 4.1227.1445.0 | 1 1 - |
| | 4.1241.1920.0 | - - 1 [x] |
| 22 | 9.1048.0005*6 | 4 4 4 A8,4 DIN 9021 [] |
| 23 | 9.1071.0053.3 | (1) (1) (1) = REF. 21 Pag. 05 |
| 41 | - | (2) 40x62x7 [»]« |
| 42 | 9.1001.0027.5 | (1) 6208 |
| 43 | - | (1) |
| 44 | - | (1) |
| 45 | 9.1002.0016.0 | (1) 30208 |
| 46 | 9.1071.0049.6 | (1) B12x8x30 |
| 47 | - | (1) |
| 48 | 9.1002.0006.4 | (1) 32207 |
| 49 | - | (1) 6207 |
| 50 | - | (1) A35x72x8 [»]« |
| 51 | 9.1150.0016.6 | (1) 3/8" |



| SPLENDIMO | type number type number numéro de type Typnummer | vanaf serienummer as from serial number après numéro de serie ab Seriennummer | SPLENDIMO | type number type number numéro de type Typnummer | vanaf serienummer as from serial number après numéro de serie ab Seriennummer |
|-----------|---|--|--------------|---|--|
| 240 FC | B B B B B | 4.1232.0014.1 | 280 FC | A B B C B B B C | 3000000 |
| | | 4.1232.0015.1 | | | 3003242 |
| | | 4.1232.0016.1 | | | 3000000 |
| | | 4.1232.0017.1 | | | 3000589 |
| | | 4.1232.0018.1 | | | 3000000 |
| 280 FC | B B B B B B C | 4.1227.0017.1 | 3001070 | 4.1227.0023.1 | 3000000 |
| | | 4.1227.0018.1 | 3001080 | 4.1255.0000.1 | 10804 - 0511 |
| | | 4.1227.0019.1 | 10805 - 0513 | 4.1255.0001.1 | 10805 - 0539 |
| | | 4.1227.0020.1 | 3000756 | 4.1255.0002.1 | 10805 - 0520 |
| | | 4.1227.0021.1 | 3000000 | 4.1255.0003.1 | 3003496 |
| | | | | 4.1255.0004.1 | 3000000 |
| | | | | 4.1255.0005.1 | 3000000 |
| | | 4.1255.0006.1 | 3000000 | | |
| | | 4.1255.0007.1 | 3000000 | | |



E094-04-00

| REF. | ONDERDEELNR. PART NUMBER REFERENCE TEILNUMMER | AANTAL QUANTITY QUANTITE ANZAHL |
|------|--|--|
|------|--|--|

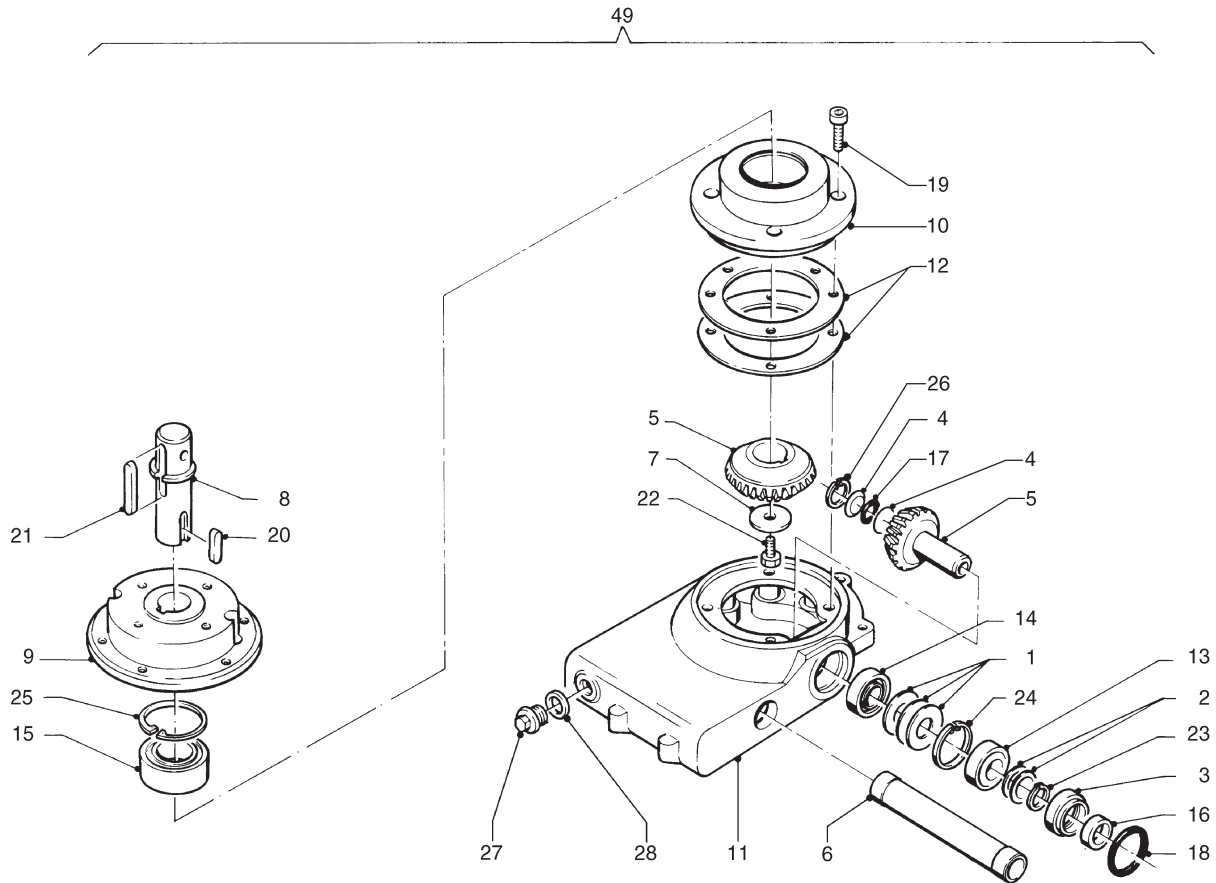
| | | |
|----|---------------|-----|
| 1 | 4.1227.0500.0 | 1 |
| 2 | 4.1227.1434.0 | 1 |
| 3 | 9.1030.0013*4 | 2 |
| 4 | 9.1048.0041*0 | 2 |
| 5 | 9.1051.0001*6 | 2 |
| 6 | 9.1051.0004*2 | 4 |
| 7 | 9.1113.0013*5 | 2 |
| 8 | 9.1113.0050*0 | 2 |
| 9 | 9.1113.0076*5 | 4 |
| 10 | 9.1113.0121*1 | 1 |
| 21 | - | 1 |
| 22 | - | 2 |
| 23 | 9.1002.0016.0 | 2 |
| 24 | 9.1042.0082.5 | 3 |
| 25 | 9.1001.0027.5 | 2 |
| 26 | 9.1083.0019.6 | 1 |
| 27 | 9.1083.0018.5 | 1 |
| | 9.1083.0022.2 | 1 |
| 28 | 9.1093.0044.0 | 5 |
| 29 | - | (1) |

| REF. | ONDERDEELNR. PART NUMBER REFERENCE TEILNUMMER | AANTAL QUANTITY QUANTITE ANZAHL |
|------|--|--|
|------|--|--|

| | | | 240 280 320 | | | |
|----|-----------------|------------------|-----------------|-----------------|--|--|
| 31 | 9.1083.0016.3 | 1 - 1 | 1:1 | 1000/min.[RD] | | |
| | 9.1083.0017.4 | (1) 1 - | [x]1:1,92 | 540/min.[RD] | | |
| | 9.1083.0020.0 | (1) - (1) | [x]1:1 | 1000/min.[LD] | | |
| | 9.1083.0021.1 | (1) (1) - | [x]1:1,92 | 540/min.[LD] | | |
| | 9.1171.0042.4 | (1,7L) - (1,7 L) | 1L GX 85W-140 | | | |
| | 9.1171.0042.4 | (1,7L) | 1L GX 85W-140 | | | |
| 32 | 9.1108.0058.0 | 3 3 3 | Ø14,6x5,5 | | | |
| 33 | 9.1170.0175.5 | 1 1 1 | | "MAX.1000/min." | | |
| | 9.1170.0125.4 | (1) (1) (1) | [x] | "MAX. 540/min." | | |
| 49 | B 4.1227.0491.1 | 1 - 1 | = REF. 31-33 | 1000/min.[RD] | | |
| 49 | A 4.1227.0521.1 | (1) 1 - | [x]= REF. 31-33 | 540/min.[RD] | | |
| 49 | C 4.1227.0590.1 | (1) - 1 | [x]= REF. 31-33 | 1000/min.[LD] | | |
| 49 | 4.1227.0610.1 | (1) (1) - | [x]= REF. 31-33 | 540/min.[LD] | | |

LELY

| SPLENDIMO | type number type number numéro de type Typnummer | vanaf serienummer as from serial number après numéro de serie ab Seriennummer | SPLENDIMO | type number type number numéro de type Typnummer | vanaf serienummer as from serial number après numéro de serie ab Seriennummer |
|-----------|---|--|------------------|---|--|
| 240 FC | 4.1232.0014.1 | 3000000 | 280 FC 320 FC | 4.1227.0023.1 | 3000000 |
| | 4.1232.0015.1 | 3003242 | | 4.1255.0000.1 | 10804 - 0511 |
| | 4.1232.0016.1 | 3000000 | | 4.1255.0001.1 | 10805 - 0539 |
| | 4.1232.0017.1 | 3000589 | | 4.1255.0002.1 | 10805 - 0520 |
| | 4.1232.0018.1 | 3000000 | | 4.1255.0003.1 | 3003496 |
| 280 FC | 4.1227.0017.1 | 3001070 | 4.1255.0004.1 | 3000000 | |
| | 4.1227.0018.1 | 3001080 | 4.1255.0005.1 | 3000000 | |
| | 4.1227.0019.1 | 10805 - 0513 | 4.1255.0006.1 | 3000000 | |
| | 4.1227.0020.1 | 3000756 | 4.1255.0007.1 | 3000000 | |
| | 4.1227.0021.1 | 3000000 | | | |



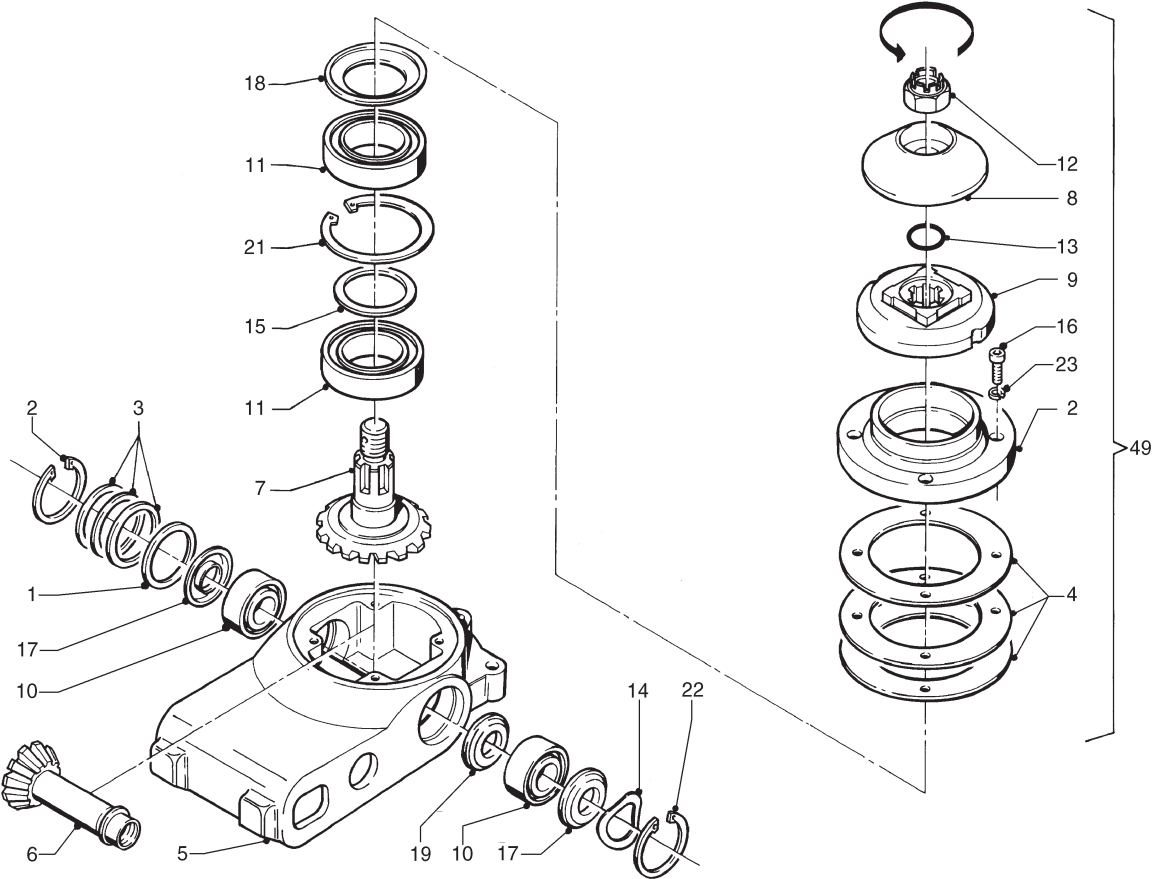
E071-06-00

| REF. | ONDERDEELNR. PART NUMBER REFERENCE TEILNUMMER | AANTAL QUANTITY QUANTITE ANZAHL | |
|------|--|--|--|
| 1 | 2.3222.0022.0 | (1) | [D+D] |
| 2 | 4.1211.0412.0 | (1) | [D+D] |
| 3 | 4.1211.0430.0 | 1 | |
| 4 | 4.1211.0432.0 | 2 | |
| 5 | 4.1220.0092.1 | 1+1 | [T+T] |
| 6 | 4.1220.0123.0 | 1 | |
| 7 | 4.1220.0768.0 | 1 | |
| 8 | 4.1220.0769.0 | 1 | |
| 9 | 4.1220.0771.0 | 1 | |
| 10 | 4.1220.0772.0 | 1 | |
| 11 | 4.1227.0247.0 9.1171.0042.4 | 1 (0,45 L) | 1L GX 85W-140 |
| 12 | 4.1227.0248.0 | (1) | [D+D] |
| 13 | 9.1002.0024.1 | 1 | 30205 |
| 14 | 9.1002.0033.3 | 1 | 32205 B |
| 15 | 9.1005.1002.4 | 1 | BA2B 446762B |
| 16 | 9.1042.0058.2 9.1171.0050.5 | 1 (0,02 kg) | 25x42x7 CB 0,4kg Unirex N3 ESSO |
| 17 | 9.1043.0036.0 | 1 | OR Ø16x2 |
| 18 | 9.1043.0038.2 | 1 | OR Ø52x2 |
| 19 | 9.1057.0010.2 | 4 | M10x25 DIN 912-12.9 |
| 20 | 9.1071.0051.1 | 1 | B10x8x25 DIN 6885 |
| 21 | 9.1071.0053.3 | 1 | B10x8x63 DIN 6885 = REF. 23 Pag. 03 |

| REF. | ONDERDEELNR. PART NUMBER REFERENCE TEILNUMMER | AANTAL QUANTITY QUANTITE ANZAHL | |
|------|--|--|---------------------|
| 22 | 9.1113.0147*6 | 1 | M12x30 DIN 933-10.9 |
| 23 | 9.1119.0022.1 | 1 | 25x2-06 DIN 471 |
| 24 | 9.1120.0003.2 | 1 | 52x2,00 DIN 472 |
| 25 | 9.1120.0009.1 | 1 | 72x2,50 DIN 472 |
| 26 | 9.1120.0030.1 | 1 | 20x1,00 DIN 472 |
| 27 | 9.1131.0013.1 | 1 | R1/2" |
| 28 | 9.1137.0408.5 | 1 | Ø21x26x1,5 Cu [—] |
| 49 | 4.1227.0840.0 | 1 | = REF. 1-28 |

LELY

| SPLENDIMO | type number type number numéro de type Typnummer | vanaf serienummer as from serial number après numéro de serie ab Seriennummer | SPLENDIMO | type number type number numéro de type Typnummer | vanaf serienummer as from serial number après numéro de serie ab Seriennummer |
|-----------|---|--|------------------|---|--|
| 240 FC | 4.1232.0014.1 | 3000000 | 280 FC 320 FC | 4.1227.0023.1 | 3000000 |
| | 4.1232.0015.1 | 3003242 | | 4.1255.0000.1 | 10804 - 0511 |
| | 4.1232.0016.1 | 3000000 | | 4.1255.0001.1 | 10805 - 0539 |
| | 4.1232.0017.1 | 3000589 | | 4.1255.0002.1 | 10805 - 0520 |
| | 4.1232.0018.1 | 3000000 | | 4.1255.0003.1 | 3003496 |
| 280 FC | 4.1227.0017.1 | 3001070 | 4.1255.0004.1 | 3000000 | |
| | 4.1227.0018.1 | 3001080 | 4.1255.0005.1 | 3000000 | |
| | 4.1227.0019.1 | 10805 - 0513 | 4.1255.0006.1 | 3000000 | |
| | 4.1227.0020.1 | 3000756 | 4.1255.0007.1 | 3000000 | |
| | 4.1227.0021.1 | 3000000 | | | |



E063-05-00

| REF. | ONDERDEELNR. PART NUMBER REFERENCE TEILNUMMER | AANTAL QUANTITY QUANTITE ANZAHL |
|------|--|--|
|------|--|--|

| | | |
|----|-----------------|------------|
| 1 | 4.1201.0061.0 | 1 |
| 2 | 4.1220.0061.0 | 1 |
| 3 | 4.1220.0078.0 | (1) |
| 4 | 4.1220.0079.0 | (1) |
| 5 | 4.1220.0287.0 | 1 |
| | 9.1171.0038.0 | 1 |
| | 9.1171.0039.1 | (0,095 kg) |
| | 9.1171.0040.2 | (0,095 kg) |
| | 9.1171.0041.3 | (0,095 kg) |
| 6 | 4.1220.0288.0 | 1 |
| 7 | 4.1220.0289.0 | 1 |
| 8 | 4.1220.1467.0 | 1 |
| 9 | 4.1225.0189.0 | 1 |
| 10 | 9.1001.0064.0 | 2 |
| | 6005 2RS1-C4 | |
| 11 | 9.1001.0065.1 | 2 |
| 12 | 9.1031.0014.4 | 1 |
| 13 | 9.1043.0061.4 | 1 |
| 14 | 9.1049.0013.6 | 1 |
| 15 | 9.1052.0004.1 | 1 |
| | 45x55x3 DIN 988 | |
| 16 | 9.1057.0089.4 | 4 |
| 17 | 9.1107.0007.5 | 2 |
| | 6005 ZJV | |
| 18 | 9.1107.0008.6 | 1 |
| | 6009 ZAV | |
| 19 | 9.1107.0014.5 | 1 |
| | 6005 ZAV | |
| 20 | 9.1120.0002.1 | 1 |
| | 47x1,75 DIN 472 | |
| 21 | 9.1120.0026.4 | 1 |
| | 75x3,00 DIN 472 | |
| 22 | 9.1120.0027.5 | 1 |
| | 47x1,75 V | |
| 23 | 9.1121.0024*1 | 4 |
| | 8 DIN 7980 | |

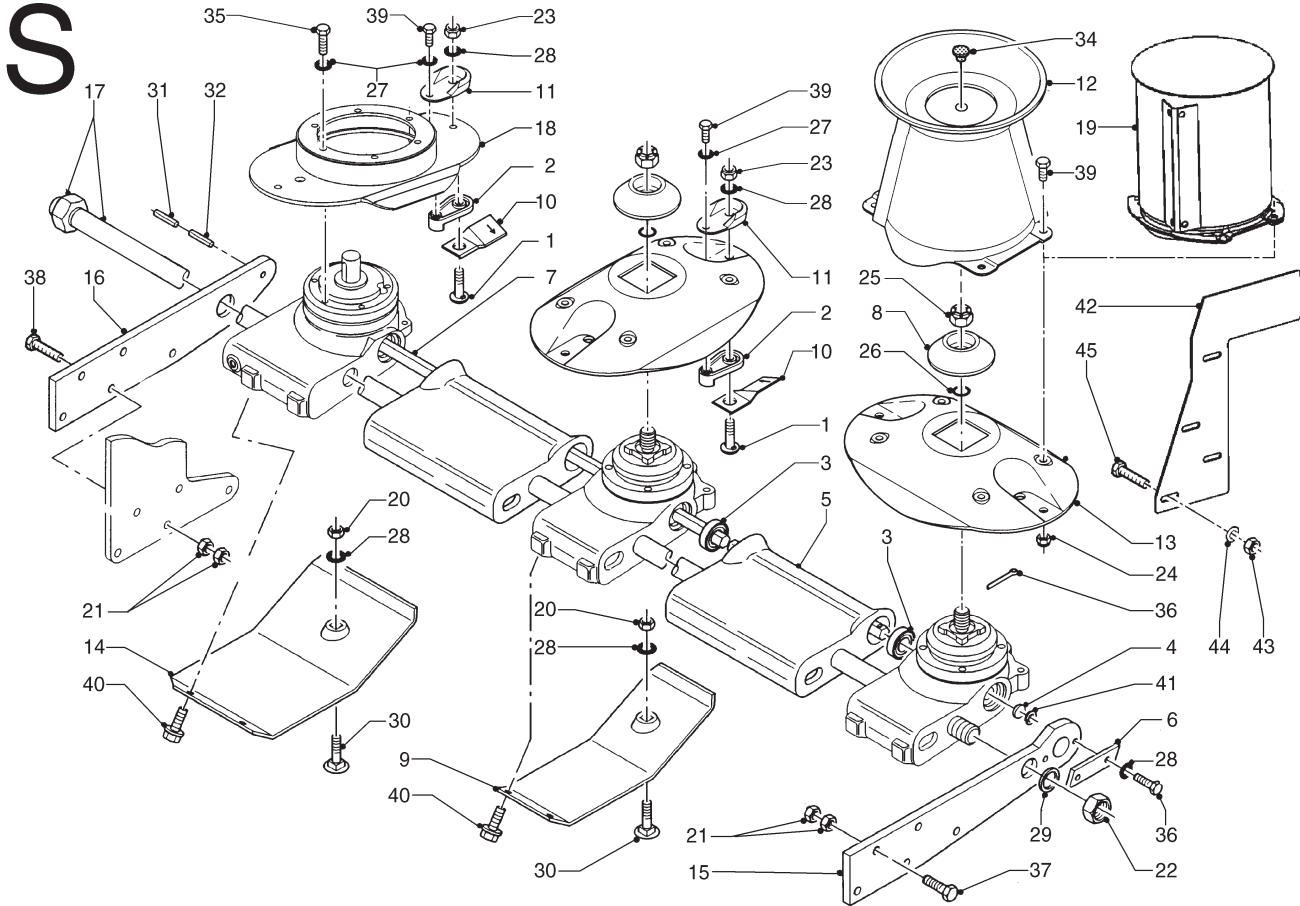
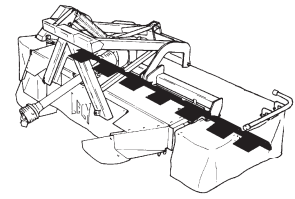
| REF. | ONDERDEELNR. PART NUMBER REFERENCE TEILNUMMER | AANTAL QUANTITY QUANTITE ANZAHL |
|------|--|--|
|------|--|--|

| | | |
|----|---------------|---------------------------|
| | | 240 280 320 |
| 49 | 4.1220.0270.1 | 3 3 4 = REF. 1-23 [LD] |
| 49 | 4.1220.0290.1 | 2 3 3 [x]= REF. 1-23 [RD] |

[---]

LELY

| SPLENDIMO | type number type number numéro de type Typnummer | vanaf serienummer as from serial number après numéro de série ab Seriennummer |
|-----------|---|--|
| 240 FC | 4.1232.0014.1 | 3000000 |
| 280 FC | 4.1227.0017.1 | 3001070 |
| 320 FC | 4.1255.0000.1 4.1255.0004.1 | 10804 - 0511 3000000 |



E074-06-00

| REF. | ONDERDEELNR. PART NUMBER REFERENCE TEILNUMMER | AANTAL QUANTITY QUANTITE ANZAHL | |
|------|--|--|--|
|------|--|--|--|

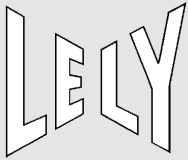
240 280 320

| | | | |
|----|---------------|----------|--|
| 1 | 4.1201.0141*0 | 12 14 16 | M10x32 DIN 267-12.9 |
| 2 | 4.1201.0142.0 | 12 14 16 | |
| 3 | 4.1201.0145.0 | 9 11 13 | |
| 4 | 4.1201.0329.0 | 1 1 - | |
| | 4.1225.0108.0 | - - 1 | |
| 5 | 4.1220.0033.0 | 5 6 7 | |
| 6 | 4.1220.0034.0 | 1 1 1 | |
| 7 | 4.1220.0039.0 | - 1 - | L= 2312 |
| | 4.1224.0129.0 | 1 - - | [x] L= 1930 |
| | 4.1225.0179.0 | - - 1 | [x] L= 1547 |
| | 4.1241.0738.0 | - - 1 | [x] L= 1131 |
| 8 | 4.1220.1467.0 | 5 6 7 | = REF. 8 Pag. 06 |
| 9 | 4.1220.1962.0 | 5 6 7 | 4mm Slijtsloffen/Verschleißkufen Wear skids/Patins d'usure |
| 10 | 4.1220.1996.0 | 6 8 8 | [RD] L= 100 |
| | 4.1220.1995.0 | 6 6 8 | [LD] L= 100 |
| 11 | 4.1225.0449.0 | 12 14 16 | |
| 12 | 4.1225.0480.0 | 1 1 (1) | |
| 13 | 4.1225.1489.0 | 5 6 7 | |
| 14 | 4.1227.0629.0 | 1 1 1 | 4mm Slijtslof/Verschleißkufe Wear skid/Patin d'usure |
| 15 | 4.1241.0750.0 | 1 1 1 | |
| 16 | 4.1241.0760.0 | 1 1 1 | |
| 17 | 4.1243.0110.0 | - 1 - | |
| | 4.1232.0110.0 | 1 - - | [x] |
| | 4.1241.0740.0 | - - 1 | [x] |

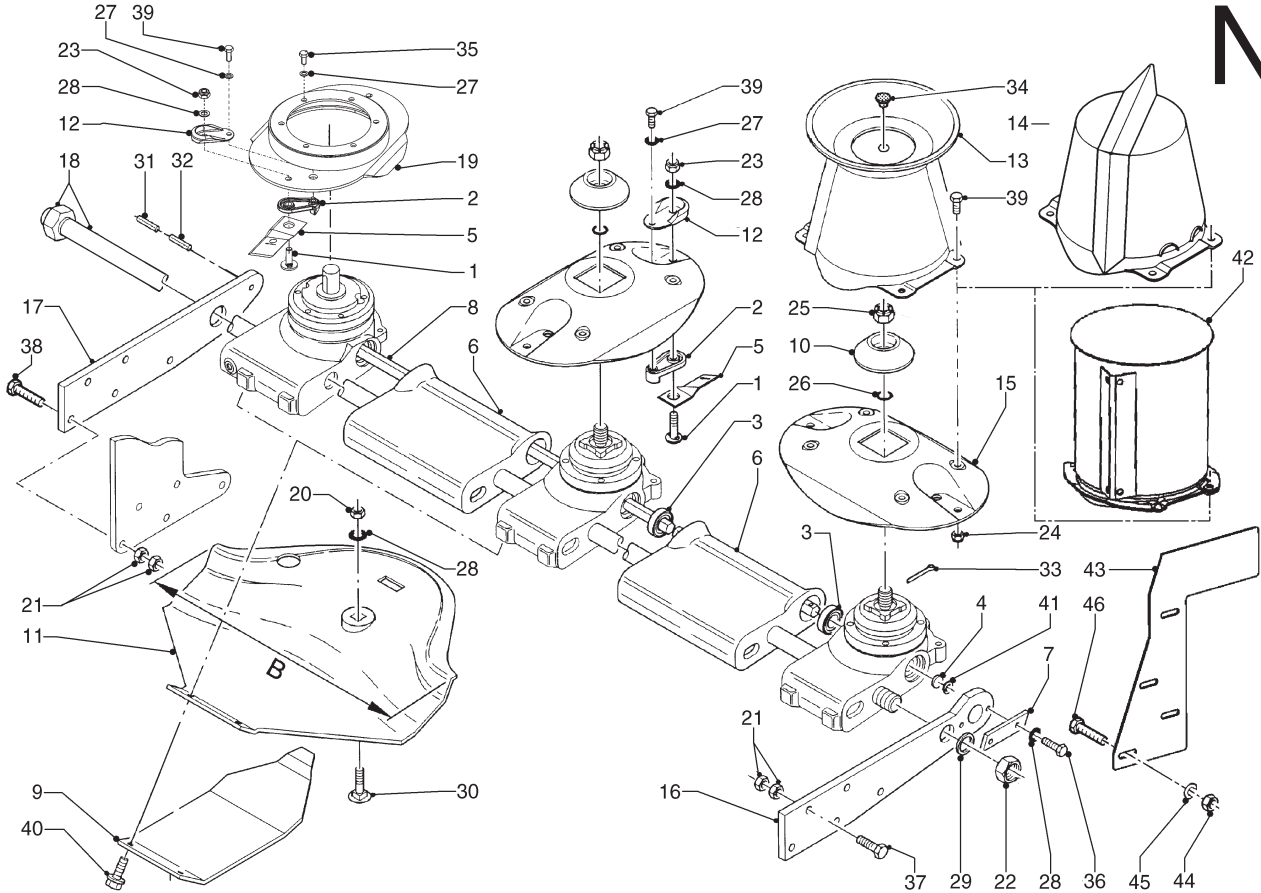
| REF. | ONDERDEELNR. PART NUMBER REFERENCE TEILNUMMER | AANTAL QUANTITY QUANTITE ANZAHL | |
|------|--|--|--|
|------|--|--|--|

240 280 320

| | | | |
|----|---------------|----------|---|
| 18 | 4.1258.0680.0 | 1 1 1 | |
| 19 | 4.1241.0930.0 | - - (1) | |
| 20 | 9.1029.0005*4 | 6 7 8 | M10 DIN 934-8 |
| 21 | 9.1029.0012*4 | 20 20 20 | M14 DIN 934-8 |
| 22 | 9.1029.0024.2 | 1 1 1 | M30x1,5 DIN 934-10 |
| 23 | 9.1030.0018*2 | 12 14 16 | M10 DIN 985-10 |
| 24 | 9.1030.0040*3 | 4 4 4 | M8 DIN 985-10 |
| 25 | 9.1031.0014.4 | 5 6 7 | M22x1,5 DIN937-22H = REF. 12 Pag. 06 |
| 26 | 9.1043.0061.4 | 5 6 7 | OR Ø23x2 = REF. 13 Pag. 06 |
| 27 | 9.1051.0001.6 | 18 20 22 | A8,2 DIN 6798 |
| 28 | 9.1051.0002.0 | 21 23 26 | A10,5 DIN 6798 [####] |
| 29 | 9.1052.0011*1 | 1 1 1 | 30x42x2,5 DIN 988 [—] |
| 30 | 9.1058.0015*6 | 6 7 8 | M10x35 DIN 603-8.8 |
| 31 | 9.1070.0077.0 | 1 1 1 | Ø11x40 DIN 1481 |
| 32 | 9.1070.0083.6 | 1 1 1 | Ø7x30 DIN 1481 |
| 33 | 9.1072.0030.0 | 5 6 7 | 3,2x36 DIN 94 |
| 34 | 9.1108.0063.5 | 1 1 1 | Ø9,3 |
| 35 | 9.1113.0013*5 | 6 6 6 | M8x16 DIN 933-8.8 |
| 36 | 9.1113.0027*5 | 2 2 2 | M10x20 DIN 933-8.8 |
| 37 | 9.1113.0231*6 | 5 5 5 | M14x65 DIN 931-8.8 |
| 38 | 9.1113.0246*0 | 5 5 - | M14x55 DIN 931-8.8 |
| | 9.1113.0231*6 | - - 5 | M14x65 DIN 931-8.8 |
| 39 | 9.1113.0341*3 | 16 18 20 | M8x20 DIN 933-10.9 |
| 40 | 9.1114.0009*0 | 12 14 16 | M10x30 8.8 |
| 41 | 9.1120.0028.6 | 1 1 1 | 18x1,00 DIN 472 |
| 42 | 4.1241.1919.0 | - - (1) | |
| 43 | 9.1030.0012*3 | - - (4) | M8 DIN 985-8 |
| 44 | 9.1048.0005.6 | - - (4) | A8,4 DIN 9021 [—] |
| 45 | 9.1058.0041*4 | - - (4) | M8x25 DIN 603-8.8 |



| SPLENDIMO | type number type number numéro de type Typnummer | vanaf serienummer as from serial number après numéro de serie ab Seriennummer | SPLENDIMO | type number type number numéro de type Typnummer | vanaf serienummer as from serial number après numéro de serie ab Seriennummer |
|-----------|---|--|-----------|---|--|
| 240 FC | B | 4.1232.0015.1 | 320 FC | | 10805 - 0539 |
| | B | 4.1232.0016.1 | | | 10805 - 0520 |
| | B | 4.1232.0017.1 | | | 3003496 |
| | A | 4.1232.0018.1 | | | 3000000 |
| 280 FC | B | 4.1227.0018.1 | | 4.1255.0001.1 | 3000000 |
| | B | 4.1227.0019.1 | | 4.1255.0002.1 | 3000000 |
| | B | 4.1227.0020.1 | | 4.1255.0003.1 | 3000000 |
| | B | 4.1227.0021.1 | | 4.1255.0005.1 | 3000000 |
| | A | 4.1227.0021.1 | | 4.1255.0006.1 | 3000000 |
| | B | 4.1227.0023.1 | | 4.1255.0007.1 | 3000000 |



E106-04-00

| REF. | ONDERDEELNR. PART NUMBER REFERENCE TEILNUMMER | AANTAL QUANTITY QUANTITE ANZAHL |
|------|--|--|
|------|--|--|

240 280 320

| | | |
|----|-----------------|-------------|
| 1 | 4.1201.0141.0 | 12 14 16 |
| 2 | 4.1201.0142.0 | 12 14 16 |
| 3 | 4.1201.0145.0 | 9 11 13 |
| 4 | 4.1201.0329.0 | 1 1 - |
| | 4.1225.0108.0 | - - 1 [x] |
| 5 | 4.1201.1473.0 | 6 8 8 [LD] |
| | 4.1201.1474.0 | 6 6 8 [RD] |
| 6 | 4.1220.0033.0 | 5 6 7 |
| 7 | 4.1220.0034.0 | 1 1 1 |
| 8 | 4.1220.0039.0 | - 1 - |
| | 4.1224.0129.0 | 1 - - |
| | 4.1225.0179.0 | - - 1 |
| | 4.1241.0738.0 | - - 1 |
| 9 | B 4.1220.1329.0 | (6) (7) (8) |
| | 4.1220.1911.0 | - - (8) |
| 10 | 4.1220.1467.0 | (5) (6) (7) |
| 11 | 4.1220.1963.0 | 5 6 6 |
| | 4.1227.1455.0 | 1 1 1 |
| | 4.1241.0849.0 | - - 1 |
| 12 | 4.1225.0449.0 | 12 14 16 |
| 13 | 4.1225.0480.0 | 1 1 1 |
| 14 | A 4.1225.0640.0 | (1) (1) - |
| 15 | 4.1225.1489.0 | 5 6 7 |
| 16 | 4.1241.0750.0 | 1 1 1 |
| 17 | 4.1241.0760.0 | 1 1 1 |
| 18 | 4.1243.0110.0 | - 1 - |
| | 4.1232.0110.0 | 1 - - |
| | 4.1241.0740.0 | - - 1 [x] |

| REF. | ONDERDEELNR. PART NUMBER REFERENCE TEILNUMMER | AANTAL QUANTITY QUANTITE ANZAHL |
|------|--|--|
|------|--|--|

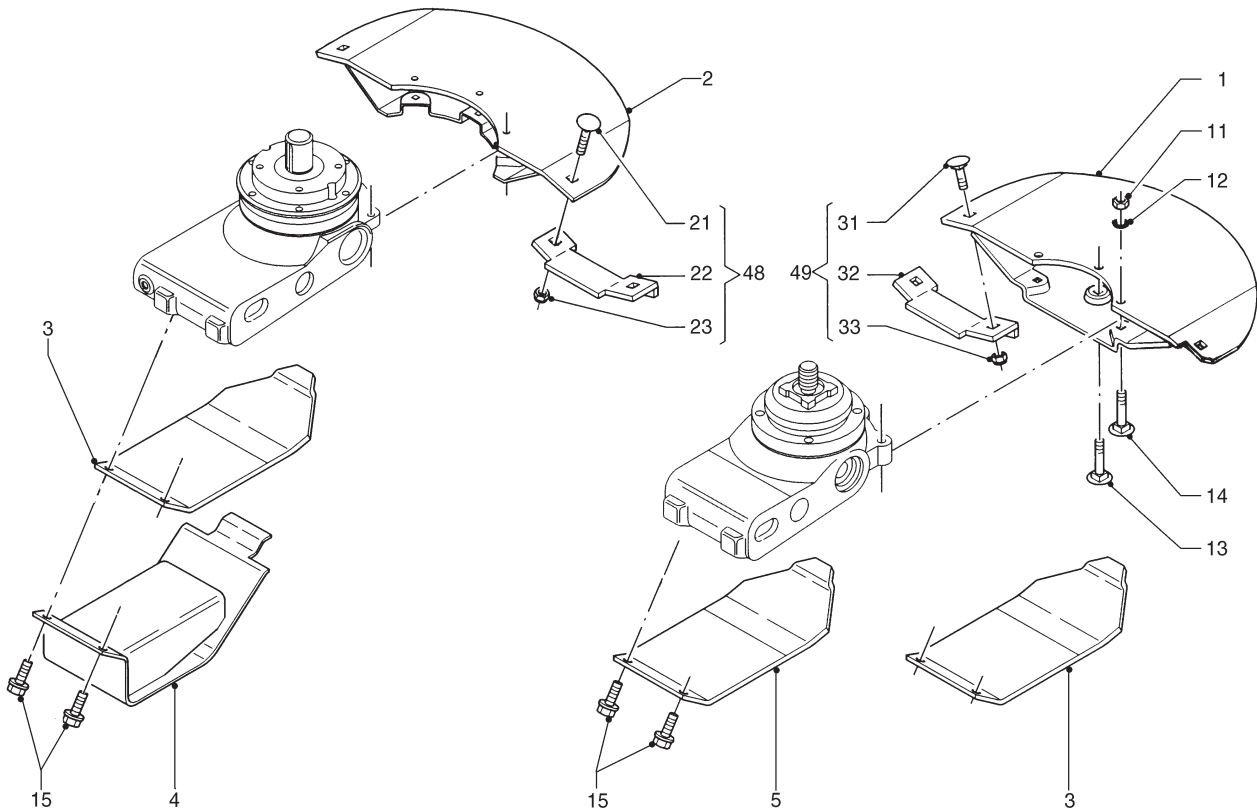
240 280 320

| | | |
|----|---------------|-------------|
| 19 | 4.1258.0670.0 | 1 1 1 |
| 20 | 9.1029.0005*4 | 6 7 8 |
| 21 | 9.1029.0012*4 | 20 20 20 |
| 22 | 9.1029.0024.2 | 1 1 1 |
| 23 | 9.1030.0018*2 | 12 14 16 |
| 24 | 9.1030.0040*3 | 4 4 4 |
| 25 | 9.1031.0014.4 | (5) (6) (7) |
| 26 | 9.1043.0061.4 | 5 6 7 |
| 27 | 9.1051.0001.6 | 18 20 26 |
| 28 | 9.1051.0002.0 | 21 23 26 |
| 29 | 9.1052.0011*1 | 1 1 1 |
| 30 | 9.1058.0015*6 | 6 7 8 |
| 31 | 9.1070.0077.0 | 1 1 1 |
| 32 | 9.1070.0083.6 | 1 1 1 |
| 33 | 9.1072.0030.0 | 5 6 7 |
| 34 | 9.1108.0063.5 | 1 1 1 |
| 35 | 9.1113.0013*5 | 6 6 6 |
| 36 | 9.1113.0027*5 | 2 2 2 |
| 37 | 9.1113.0231*6 | 5 5 5 |
| 38 | 9.1113.0246*0 | 5 5 - |
| | 9.1113.0231*6 | - - 5 |
| 39 | 9.1113.0341*3 | 16 18 20 |
| 40 | 9.1114.0009*0 | 12 14 16 |
| 41 | 9.1120.0028.6 | 1 1 1 |
| 42 | 4.1241.0930.0 | - - (1) |
| 43 | 4.1241.1919.0 | - - (1) |
| 44 | 9.1030.0012*3 | - - (4) |
| 45 | 9.1048.0005*6 | - - (4) |
| 46 | 9.1058.0041*4 | - - (4) |

[]

LELY

| SPLENDIMO | type number type number numéro de type Typnummer | vanaf serienummer as from serial number après numéro de serie ab Seriennummer | SPLENDIMO | type number type number numéro de type Typnummer | vanaf serienummer as from serial number après numéro de serie ab Seriennummer |
|-----------|---|--|------------------|---|--|
| 240 FC | 4.1232.0014.1 | 3000000 | 280 FC 320 FC | 4.1227.0023.1 | 3000000 |
| | 4.1232.0015.1 | 3003242 | | 4.1255.0000.1 | 10804 - 0511 |
| | 4.1232.0016.1 | 3000000 | | 4.1255.0001.1 | 10805 - 0539 |
| | 4.1232.0017.1 | 3000589 | | 4.1255.0002.1 | 10805 - 0520 |
| 280 FC | 4.1232.0018.1 | 3000000 | 4.1255.0003.1 | 3003496 | |
| | 4.1227.0017.1 | 3001070 | 4.1255.0004.1 | 3000000 | |
| | 4.1227.0018.1 | 3001080 | 4.1255.0005.1 | 3000000 | |
| | 4.1227.0019.1 | 10805 - 0513 | 4.1255.0006.1 | 3000000 | |
| | 4.1227.0020.1 | 3000756 | 4.1255.0007.1 | 3000000 | |
| | 4.1227.0023.1 | 3000000 | | | |



E105-04-00

| REF. | ONDERDEELNR. PART NUMBER REFERENCE TEILNUMMER | AANTAL QUANTITY QUANTITE ANZAHL | | |
|------|--|--|--|--|
|------|--|--|--|--|

240 280 320

| | | | | |
|----|---------------|----------------|--|-------|
| 1 | 4.1220.0341.0 | (5) (6) (7) | Glijsoffen Skids Patins Kufen | 5mm |
| 2 | 4.1220.0351.0 | (1) (1) (1) | Glijstof Skid Patin Kufe | 3mm |
| 3 | 4.1225.0359.0 | (6) (7) (8) | Slijtplaten Wear plates Plaques d'usure Verschleissplatten | 10 mm |
| 4 | 4.1225.0400.0 | (6) (7) (7) | Verhoogde slijtplaten 6mm Top skids Plaques réhausseurs Erhöhte Verschleißplatten | |
| 5 | 4.1225.0499.0 | 6 7 8 | Slijtplaten Wear plates Plaques d'usure Verschleissplatten | 4 mm |
| 11 | 9.1029.0005*4 | (18) (21) (24) | M10 DIN 934-8 | |
| 12 | 9.1051.0002*0 | (18) (21) (24) | A10,5 DIN 6798 [####] | |
| 13 | 9.1058.0048*4 | (6) (7) (8) | M10x40 DIN 603-8.8 | |
| 14 | 9.1058.0049*5 | (12) (14) (16) | M10x45 DIN 603-8.8 | |
| 15 | 9.1114.0009*0 | 12 14 16 | M10x30 8.8 | |

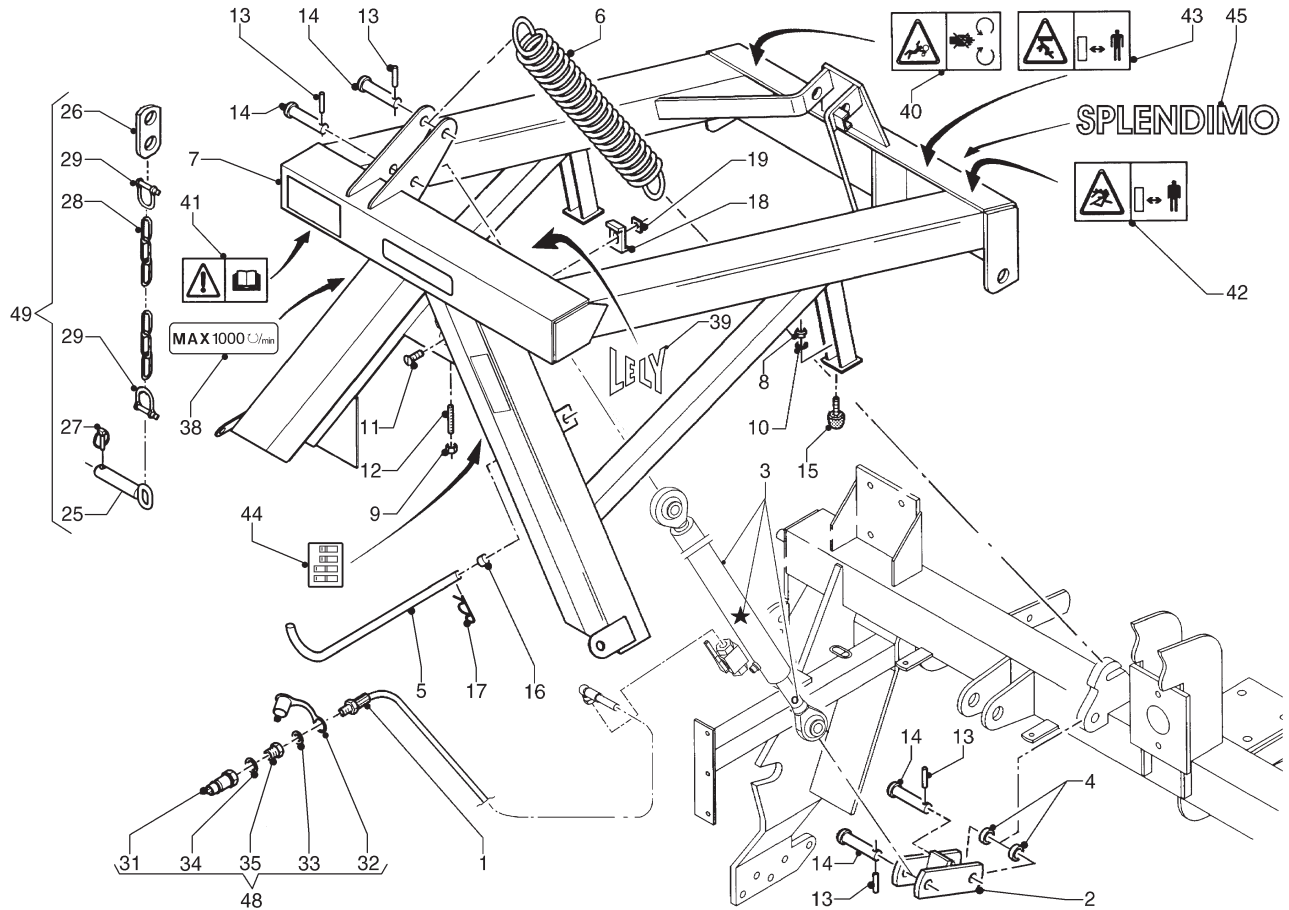
| REF. | ONDERDEELNR. PART NUMBER REFERENCE TEILNUMMER | AANTAL QUANTITY QUANTITE ANZAHL | | |
|------|--|--|--|--|
|------|--|--|--|--|

240 280 320

| | | | | |
|----|---------------|-------------|---|--|
| 21 | 9.1058.0027*4 | (2) (2) (2) | M10x25 DIN 603 | |
| 22 | 4.1220.0250.0 | (1) (1) (1) | [←135→] | |
| 23 | 9.1030.0004*2 | (2) (2) (2) | M10 DIN 985-8 | |
| 31 | 9.1058.0027*4 | 8 10 12 | M10x25 DIN 603 | |
| 32 | 4.1225.0550.0 | 4 5 6 | [←125→] | |
| 33 | 9.1030.0004*2 | 8 10 12 | M10 DIN 985-8 | |
| 48 | 4.1220.0260.8 | (1) (1) (1) | = REF. 21-23 [←135→] Maaibalk-steenbescherming Cutter bar stone protection Kit de protection anti-pierres Mähbalken-Steinschutzsatz | |
| 49 | 4.1225.0540.8 | (4) (5) (6) | = REF. 31-33 [←125→] Maaibalk-steenbescherming Cutter bar stone protection Kit de protection anti-pierres Mähbalken-Steinschutzsatz | |

LELY

| SPLENDIMO | type number type number numéro de type Typnummer | vanaf serienummer as from serial number après numéro de série ab Seriennummer | SPLENDIMO | type number type number numéro de type Typnummer | vanaf serienummer as from serial number après numéro de série ab Seriennummer |
|-----------|---|--|---------------|---|--|
| 240 FC | 4.1232.0014.1 | 3000000 | 280 FC | 4.1227.0017.1 | 3001070 |
| | 4.1232.0015.1 | 3003242 | | 4.1227.0018.1 | 3001080 |
| | 4.1232.0016.1 | 3000000 | | 4.1227.0019.1 | 10805 - 0513 |
| | 4.1232.0017.1 | 3000589 | | 4.1227.0020.1 | 3000756 |
| | 4.1232.0018.1 | 3000000 | | 4.1227.0021.1 | 3000000 |
| | | | 4.1227.0023.1 | 3000000 | |



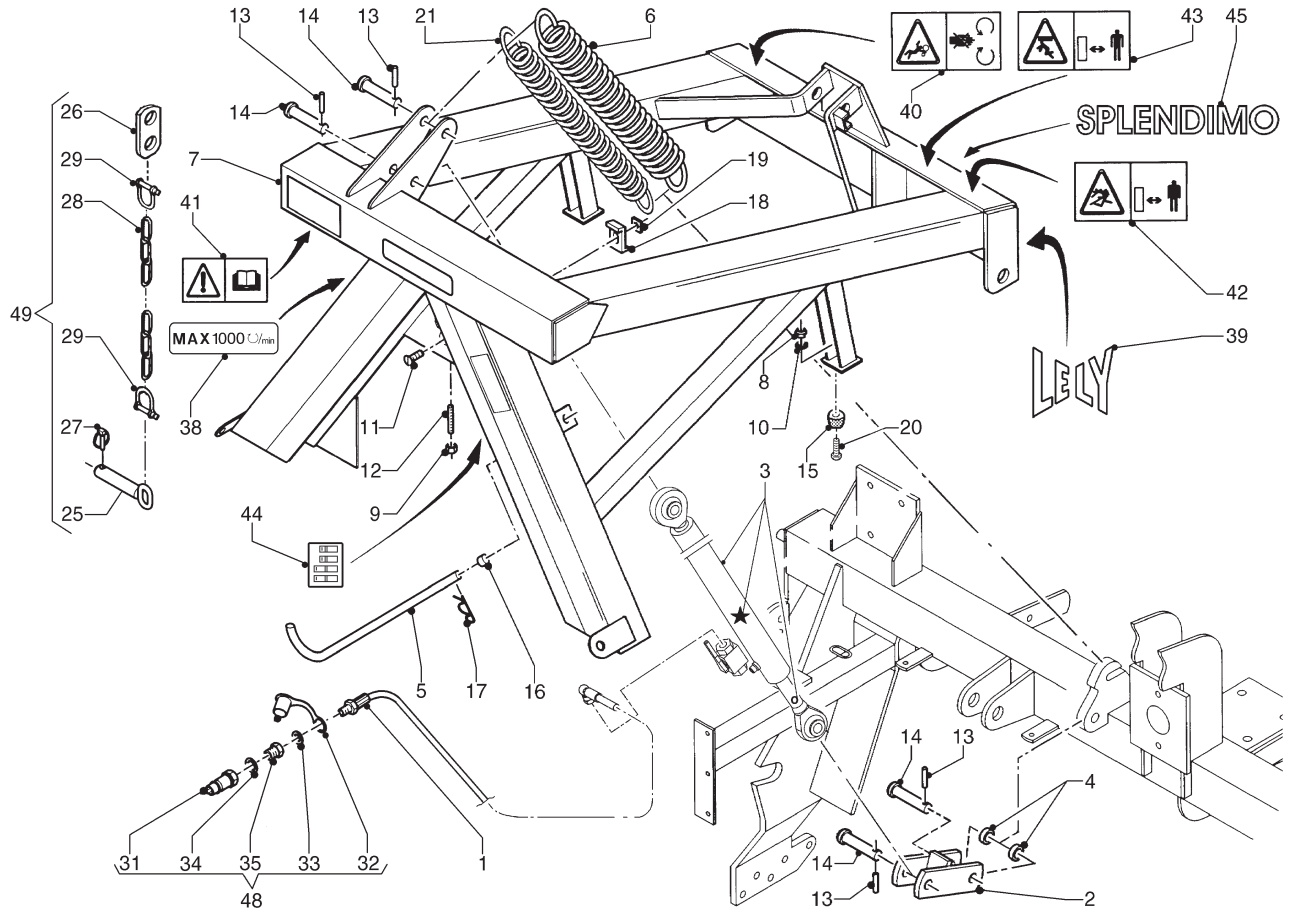
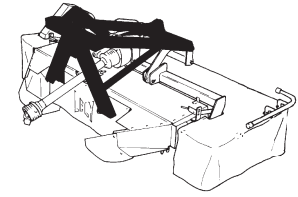
E089-04-00

| REF. | ONDERDEELNR. PART NUMBER REFERENCE TEILNUMMER | AANTAL QUANTITY QUANTITE ANZAHL | |
|------|--|--|------------------------------|
| 1 | 2.3201.2311.0 | 1 | L= 1810 mm |
| 2 | 4.1227.0390.0 | 1 | |
| 3 | 4.1227.0411.0 | 1 | (3= 3 + ★ + ○) |
| ★ | 4.1016.0518.0 | (1) | (d= Ø25, D= Ø40/50) [A+A][x] |
| ○ | 4.9000.0113.0 | (1) | |
| 4 | 4.1227.1477.0 | 1 | |
| 5 | 4.1227.1480.0 | 1 | |
| 6 | 4.1227.1493.0 | 1 | |
| 7 | 4.1255.0340.0 | 1 | |
| 8 | 9.1029.0005*4 | 2 | M10 DIN 934-8 |
| 9 | 9.1029.0008*0 | 1 | M12 DIN 934-8 |
| 10 | 9.1051.0002*0 | 2 | A10,5 DIN 6798 [####] |
| 11 | 9.1057.0304.2 | 1 | M12x30 DIN 7991-8.8 |
| 12 | 9.1063.0010.3 | 1 | M12x40 DIN 913-45H |
| 13 | 9.1070.0030.2 | 4 | Ø12x50 DIN 1481 |
| 14 | 9.1088.0002*5 | 4 | 19-76 |
| 15 | 9.1105.0011.4 | 2 | K50x22,5 M10x28 |
| 16 | 9.1108.0066.1 | 1 | Ø16 |
| 17 | 9.1124.0001*3 | 1 | Ø5 |
| 18 | 9.1180.0097.1 | 1 | |
| 19 | 9.1180.0098.2 | 1 | |
| 25 | 1.1804.0310.0 | 2 | |
| 26 | 4.1201.2078.0 | 2 | |
| 27 | 9.1123.0002*5 | 2 | Ø11 |
| 28 | 9.1144.0018*0 | 2 | Ø10x65 (13x) |
| 29 | 9.1146.0005*6 | 4 | 5/8" |

| REF. | ONDERDEELNR. PART NUMBER REFERENCE TEILNUMMER | AANTAL QUANTITY QUANTITE ANZAHL | |
|------|--|--|--|
| 31 | 9.1137.0302.4 | 1 | 1/2" G |
| 32 | 9.1137.0303.5 | 1 | 1/2" PVC |
| 33 | 9.1137.0409.6 | 1 | Ø13,75x20,57x2,03 [] |
| 34 | 9.1137.0411.1 | 1 | Ø21,54x28,58x2,3 [] |
| 35 | 9.1137.0603.4 | 1 | 1/2"-1/4" |
| 38 | 9.1170.0175.5 | 1 | "MAX. 1000/min." |
| | 9.1170.0125.4 | (1) | [x]"MAX. 540/min." |
| 39 | 9.1170.0200.2 | 1 | "LELY" |
| 40 | 9.1170.0407.6 | 1 | |
| 41 | 9.1170.0408.0 | 1 | |
| 42 | 9.1170.0410.2 | 1 | |
| 43 | 9.1170.0417.2 | 1 | |
| 44 | 9.1170.0430.1 | 1 | "Maimes 83 / 120 mm" "Knife 83 / 120 mm" "Couteau 83 / 120 mm" "Messer 83 / 120 mm" |
| 45 | 9.1170.0511.5 | 1 | "SPLENDIMO" |
| 48 | 2.3201.2301.8 | 1 | = REF. 31-35 |
| 49 | 4.1227.0630.0 | 1 | = REF. 25-29 |

LELY

| SPLENDIMO | type number type number Número de type Typnummer | vanaf serienummer as from serial number après numéro de serie ab Seriennummer |
|-----------|---|--|
| 320 FC | A 4.1255.0000.1 | 10804 - 0511 |
| | A 4.1255.0001.1 | 10805 - 0539 |
| | A 4.1255.0002.1 | 10805 - 0520 |
| | A 4.1255.0003.1 | 3003496 |
| | A 4.1255.0004.1 | 3000000 |
| | A 4.1255.0005.1 | 3000000 |
| | A 4.1255.0006.1 | 3000000 |
| | A 4.1255.0007.1 | 3000000 |



E089-04-01

| REF. | ONDERDEELNR. PART NUMBER REFERENCE TEILNUMMER | AANTAL QUANTITY QUANTITE ANZAHL | |
|------|--|--|--|
|------|--|--|--|

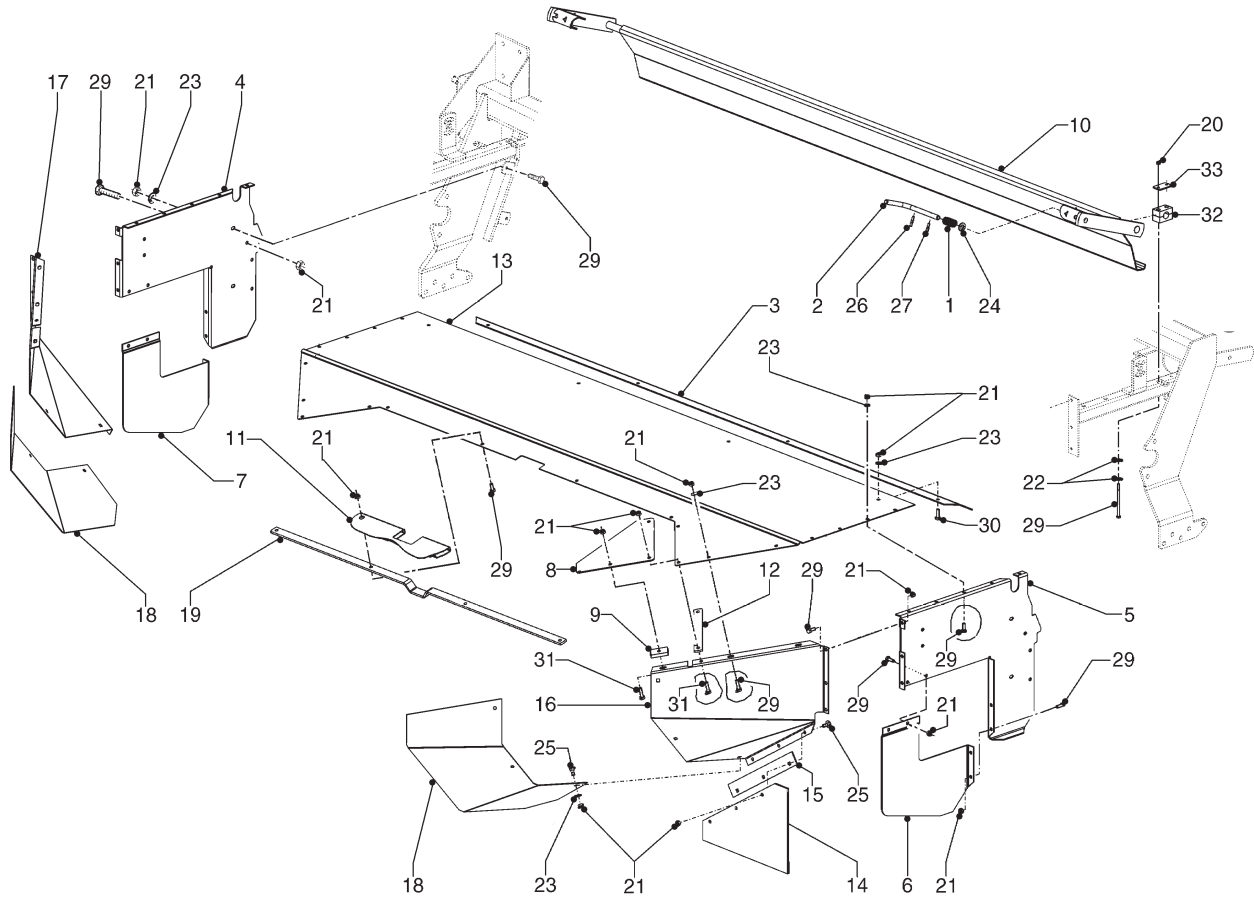
| | | | |
|-----|---|-----------------|---|
| 1 | 4.1255.1472.0 2.3201.2311.0 | 1 1 | L= 2010 [x]L= 1800 |
| 2 | 4.1227.0390.0 | 1 | |
| 3 | 4.1255.0430.0 4.1255.0439.0 4.9000.0113.0 | 1 (1) (1) | (3= 3 + * + o) (d= Ø25, D= Ø50) [A+A][x] |
| 3 A | 4.1227.0411.0 | 1 | [x](3A= 3A + *) |
| * | 4.1016.0518.0 | (1) | (d= Ø25, D= Ø40) [A+A][x] |
| 4 | 4.1227.1477.0 A 4.1227.1466.0 | 2 2 | [x] |
| 5 | 4.1227.1480.0 | 1 | |
| 6 | 4.1227.1493.0 | 1 | |
| 7 | 4.1255.0340.0 | 1 | |
| 8 | 9.1030.0004*2 | 2 | M10 DIN 985-8 |
| 9 | 9.1029.0008*0 | 1 | M12 DIN 934-8 |
| 10 | 9.1121.0004*2 | 2 | A10 DIN 127 |
| 11 | 9.1057.0304.2 | 1 | M12x30 DIN 7991-8.8 [—] |
| 12 | 9.1063.0010.3 | 1 | M12x40 DIN 913-45H |
| 13 | 9.1070.0030.2 | 4 | Ø12x50 DIN 1481 |
| 14 | 9.1088.0002*5 | 4 | 19-76 |
| 15 | 4.1255.1478.0 | 2 | M10x28 |
| 16 | 9.1108.0066.1 | 1 | Ø16 |
| 17 | 9.1124.0001*3 | 1 | Ø5 |
| 18 | 9.1180.0097.1 | 1 | |
| 19 | 9.1180.0098.2 | 1 | |
| 20 | 9.1113.0120*0 | 2 | M10x30 DIN 933-8.8 |
| 21 | 4.1255.1495.0 | 1 | |
| 25 | 1.1804.0310.0 | 2 | |

| REF. | ONDERDEELNR. PART NUMBER REFERENCE TEILNUMMER | AANTAL QUANTITY QUANTITE ANZAHL | |
|------|--|--|--|
|------|--|--|--|

| | | | |
|----|--------------------------------|----------|--|
| 26 | 4.1201.2078.0 | 2 | |
| 27 | 9.1123.0002*5 | 2 | Ø11 |
| 28 | 9.1144.0018*0 | 2 | Ø10x65 (13x) |
| 29 | 9.1146.0005*6 | 4 | 5/8" |
| 31 | 9.1137.0302.4 | 1 | 1/2" G |
| 32 | 9.1137.0303.5 | 1 | 1/2" PVC |
| 33 | 9.1137.0410.0 | 1 | Ø17,28x23,80x2,03 [—] |
| A | 9.1137.0409.6 | 1 | [x]Ø13,74x20,57x2,03 [—] |
| 34 | 9.1137.0411.1 | 1 | Ø21,54x28,58x2,3 [—] |
| 35 | 9.1137.0613.0 | 1 | [x]3/8"-1/2" |
| A | 9.1137.0603.4 | 1 | 1/4"-1/2" |
| 38 | 9.1170.0175.5 9.1170.0125.4 | 1 (1) | "MAX. 1000/min." [x]"MAX. 540/min." |
| 39 | 9.1170.0200.2 | 1 | "LELY" |
| 40 | 9.1170.0407.6 | 1 | |
| 41 | 9.1170.0408.0 | 1 | |
| 42 | 9.1170.0410.2 | 1 | |
| 43 | 9.1170.0417.2 | 1 | |
| 44 | 9.1170.0573.4 | 1 | "Maimes 100 / 120 mm" "Knife 100 / 120 mm" "Couteau 100 / 120 mm" "Messer 100 / 120 mm" |
| 45 | 9.1170.0449.5 | 1 | "SPLENDIMO" |
| 48 | 4.1255.1471.0 | 1 | = REF. 31-35 |
| A | 2.3201.2312.0 | 1 | [x]= REF. 31+32+33A+34+35A |
| 49 | 4.1227.0630.8 | 1 | = REF. 25-29 |

LELY

| SPLENDIMO | type number type number numéro de type Typnummer | vanaf serienummer as from serial number après numéro de serie ab Seriennummer | SPLENDIMO | type number type number numéro de type Typnummer | vanaf serienummer as from serial number après numéro de serie ab Seriennummer |
|-----------|---|--|-----------------|---|--|
| 240 FC | A 4.1232.0014.1 | 3000000 | 280 FC | A 4.1227.0017.1 | 3001070 |
| | A 4.1232.0015.1 | 3003242 | | A 4.1227.0018.1 | 3001080 |
| | A 4.1232.0016.1 | 3000000 | | A 4.1227.0019.1 | 10805 - 0513 |
| | A 4.1232.0017.1 | 3000589 | | A 4.1227.0020.1 | 3000756 |
| | A 4.1232.0018.1 | 3000000 | | A 4.1227.0021.1 | 3000000 |
| | | | A 4.1227.0023.1 | 3000000 | |



E223-03-01

| REF. | ONDERDEELNR. PART NUMBER REFERENCE TEILNUMMER | AANTAL QUANTITY QUANTITE ANZAHL |
|------|--|--|
|------|--|--|

240 280

| | | |
|-----|---------------|---------|
| 1 | 4.1002.0093.0 | 2 2 |
| 2 | 4.1207.0188.0 | 2 2 |
| 3 | 4.1217.0364.0 | - 1 |
| | 4.1224.1493.0 | 1 - [x] |
| 4 A | 4.1220.1118.0 | 1 1 [L] |
| 5 A | 4.1220.1119.0 | 1 1 [R] |
| 6 | 4.1220.1997.0 | 1 1 [R] |
| 7 | 4.1220.1998.0 | 1 1 [L] |
| 8 | 4.1227.0728.0 | - 2 |
| | 4.1232.0479.0 | 2 - [x] |
| 9 | 4.1227.0729.0 | 2 2 |
| 10 | 4.1227.0800.0 | - 1 |
| | 4.1232.0400.0 | 1 - [x] |
| 11 | 4.1227.1441.0 | - 1 |
| | 4.1232.1488.0 | 1 - [x] |
| 12 | 4.1227.1447.0 | - 2 |
| | 4.1232.1490.0 | 2 - [x] |
| 13 | 4.1227.1449.0 | - 1 |
| | 4.1232.1492.0 | 1 - [x] |

| REF. | ONDERDEELNR. PART NUMBER REFERENCE TEILNUMMER | AANTAL QUANTITY QUANTITE ANZAHL |
|------|--|--|
|------|--|--|

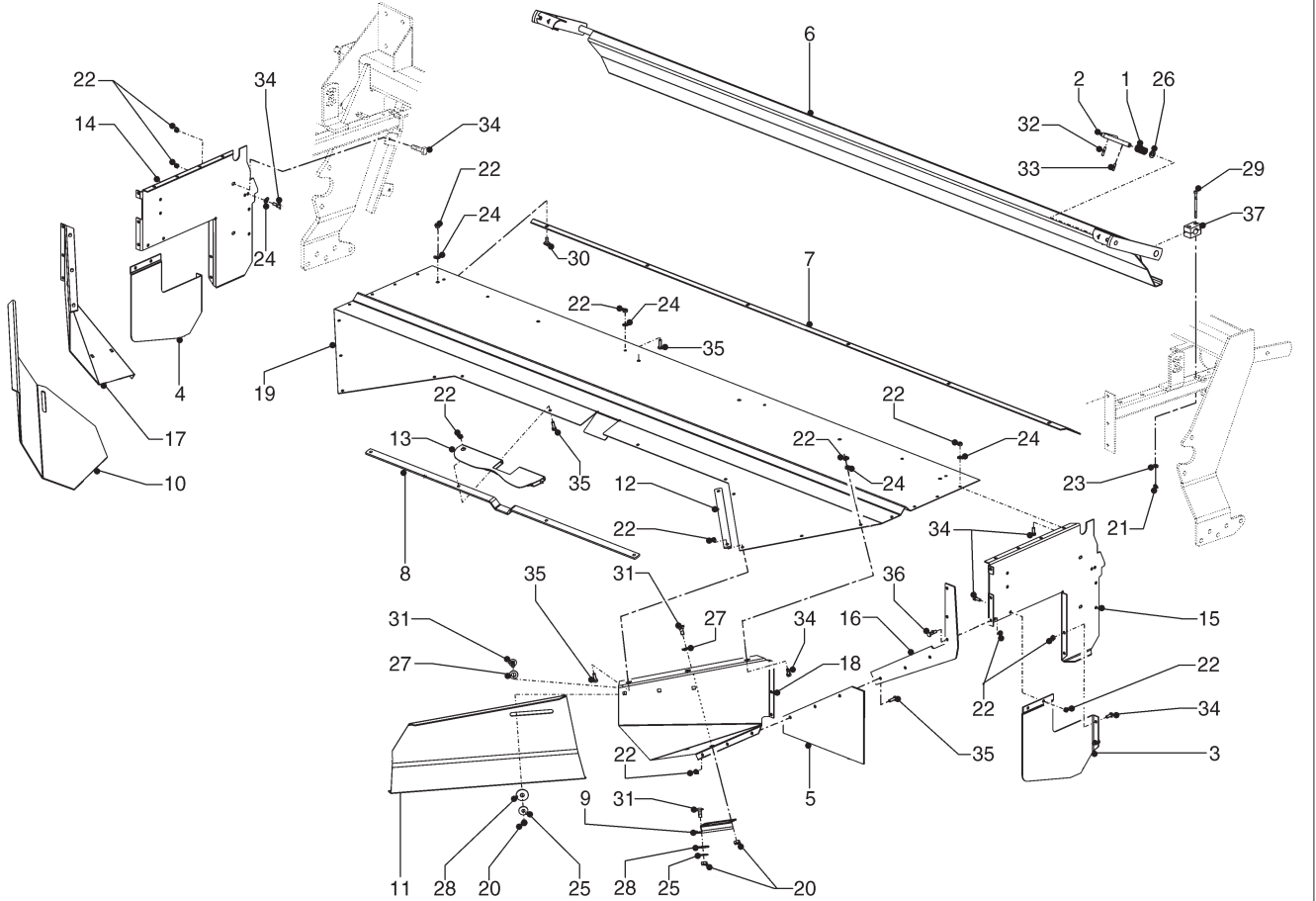
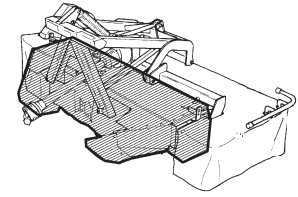
240 280

| | | |
|----|---------------|-------------------------|
| 14 | 4.1227.1458.0 | 2 2 |
| 15 | 4.1227.1459.0 | 2 2 |
| 16 | 4.1227.1464.0 | - 1 [R] |
| | 4.1232.1493.0 | 1 - [x][R] |
| 17 | 4.1227.1465.0 | - 1 [L] |
| | 4.1232.1494.0 | 1 - [x][L] |
| 18 | 4.1227.1489.0 | - 2 |
| 19 | 4.1255.1479.0 | - 1 |
| | 4.1227.1462.0 | 1 - |
| 20 | 9.1030.0011*2 | 4 4 M6 DIN 985-8 |
| 21 | 9.1030.0012*3 | 50 58 M8 DIN 985-8 |
| 22 | 9.1048.0001*2 | 8 8 A6,4 DIN 9021 |
| 23 | 9.1048.0004*5 | 18 26 8,4 DIN 125 |
| 24 | 9.1048.0012*6 | 2 2 A13 DIN 125 |
| 25 | 9.1058.0008*6 | 6 12 M8x20 DIN 603 |
| 26 | 9.1070.0017.3 | 2 2 Ø6x30 DIN 1481 |
| 27 | 9.1070.0049.0 | 2 2 Ø6x24 DIN 1481 |
| 28 | 9.1113.0008*0 | 4 4 M6x100 DIN 931-8.8 |
| 29 | 9.1113.0014*6 | 34 36 M8x20 DIN 933-8.8 |
| 30 | 9.1113.0128*1 | 4 4 M8x25 DIN 933-8.8 |
| 31 | 9.1113.0130*3 | - 6 M8x30 DIN 933-8.8 |
| 32 | 9.1137.0904.4 | 2 2 |
| 33 | 9.1137.0905.5 | 2 2 |

[]
[]
[]

LELY

| SPLENDIMO | type number type number numéro de type Typnummer | vanaf serienummer as from serial number après numéro de série ab Seriennummer |
|---------------|---|--|
| 320 FC | 4.1255.0000.1 | 10804 - 0511 |
| | 4.1255.0001.1 | 10805 - 0539 |
| | 4.1255.0002.1 | 10805 - 0520 |
| | 4.1255.0003.1 | 3003496 |
| | 4.1255.0004.1 | 3000000 |
| | 4.1255.0005.1 | 3000000 |
| | 4.1255.0006.1 | 3000000 |
| 4.1255.0007.1 | 3000000 | |



E223-04-01

| REF. | ONDERDEELNR. PART NUMBER REFERENCE TEILNUMMER | AANTAL QUANTITY QUANTITE ANZAHL |
|------|--|--|
|------|--|--|

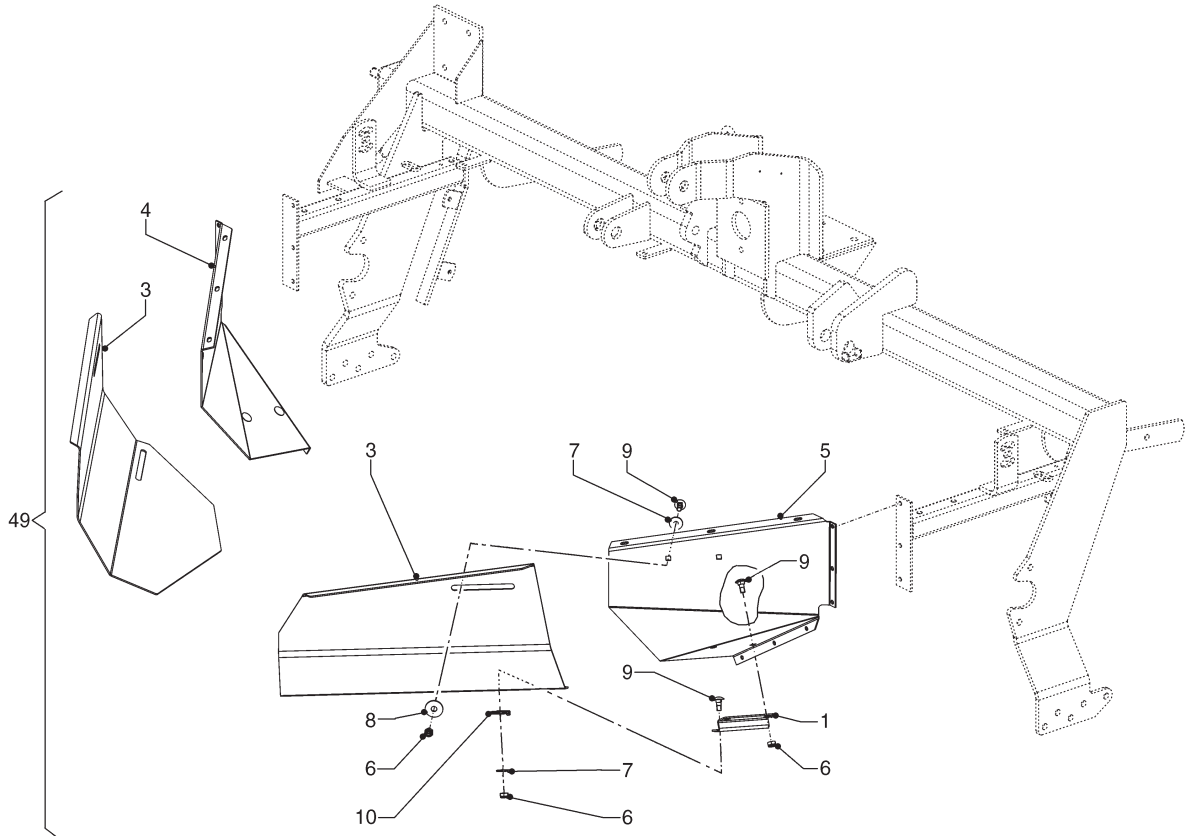
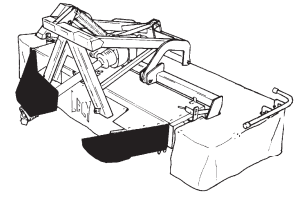
| | | |
|----|---------------|----------------|
| 1 | 4.1002.0093.0 | 2 |
| 2 | 4.1207.0188.0 | 2 |
| 3 | 4.1220.1997.0 | 1 |
| 4 | 4.1220.1998.0 | 1 |
| 5 | 4.1227.1458.0 | 2 |
| 6 | 4.1255.0291.0 | 1 |
| 7 | 4.1255.1438.0 | 1 |
| 8 | 4.1255.1479.0 | 1 |
| 9 | 4.1255.1480.0 | 2 |
| 10 | 4.1255.1481.0 | 1 |
| | | [L] |
| 11 | 4.1255.1482.0 | 1 |
| | | [R] |
| 12 | 4.1255.1489.0 | 2 |
| 13 | 4.1255.1490.0 | 1 |
| 14 | 4.1255.1493.0 | 1 |
| 15 | 4.1255.1494.0 | 1 |
| 16 | 4.1255.1496.0 | 2 |
| 17 | 4.1255.1497.0 | 1 |
| 18 | 4.1255.1498.0 | 1 |
| 19 | 4.1255.1499.0 | 1 |
| 20 | 9.1030.0004*2 | 10 |
| | | M10 DIN 985-8 |
| 21 | 9.1030.0011*2 | 4 |
| | | M6 DIN 985-8 |
| 22 | 9.1030.0012*3 | 58 |
| | | M8 DIN 985-8 |
| 23 | 9.1048.0001*2 | 4 |
| | | A6,4 DIN 9021 |
| 24 | 9.1048.0004*5 | 26 |
| | | A8,4 DIN 125 |
| 25 | 9.1048.0008*2 | 6 |
| | | A10,5 DIN 9021 |

| REF. | ONDERDEELNR. PART NUMBER REFERENCE TEILNUMMER | AANTAL QUANTITY QUANTITE ANZAHL |
|------|--|--|
|------|--|--|

| | | |
|----|---------------|--------------------|
| 26 | 9.1048.0012*6 | 2 |
| | | A13 DIN 125 |
| 27 | 9.1048.0053*5 | 8 |
| | | A15 DIN 125 |
| 28 | 9.1048.0067.5 | 6 |
| | | A13 DIN 9021 NYL |
| 29 | 9.1057.0112.6 | 4 |
| | | M6x90 DIN 912-8.8 |
| 30 | 9.1058.0008*6 | 6 |
| | | M8x20 DIN 603 |
| 31 | 9.1058.0056*5 | 10 |
| | | M10x25 DIN 603-8.8 |
| 32 | 9.1070.0017.3 | 2 |
| | | Ø6x30 DIN 1481 |
| 33 | 9.1070.0049.0 | 2 |
| | | Ø6x24 DIN 1481 |
| 34 | 9.1113.0014*6 | 26 |
| | | M8x20 DIN 933-8.8 |
| 35 | 9.1113.0128*1 | 20 |
| | | M8x25 DIN 933-8.8 |
| 36 | 9.1113.0130*3 | 6 |
| | | M8x30 DIN 933-8.8 |
| 37 | 9.1137.0904.4 | 2 |

LELY

| SPLENDIMO | type number type number numéro de type Typnummer | vanaf serienummer as from serial number après numéro de série ab Seriennummer |
|-----------|---|--|
| 280 FC | 4.1227.0017.1 | 3001070 |
| | 4.1227.0018.1 | 3001080 |
| | 4.1227.0019.1 | 10805 - 0513 |
| | 4.1227.0020.1 | 3000756 |
| | 4.1227.0021.1 | 3000000 |
| | 4.1227.0023.1 | 3000000 |



E229-02-01

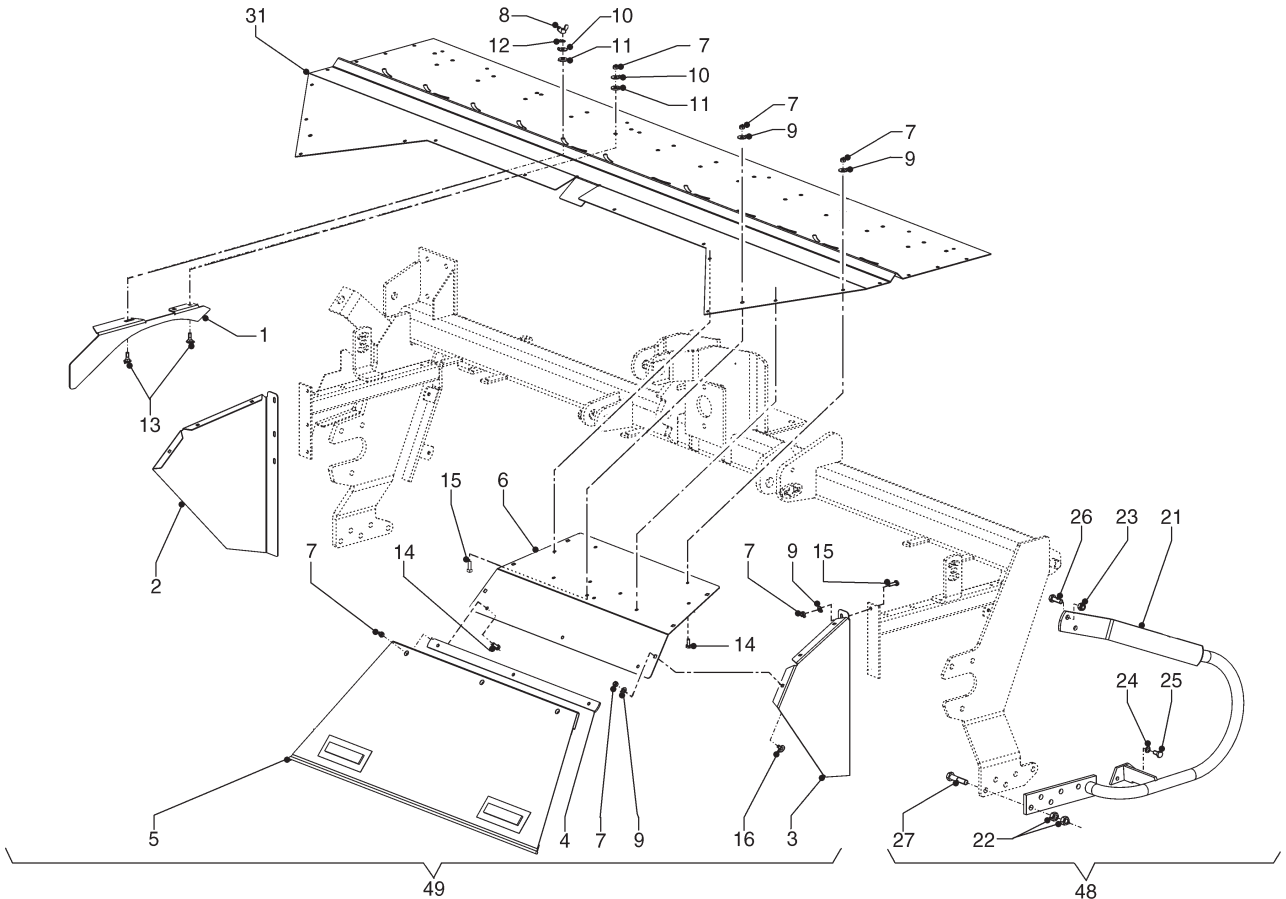
| REF. | ONDERDEELNR. PART NUMBER REFERENCE TEILNUMMER | AANTAL QUANTITY QUANTITE ANZAHL |
|------|--|--|
|------|--|--|

| | | |
|----|---------------|-------------------------|
| 1 | 4.1255.1480.0 | (2) |
| 2 | 4.1255.1481.0 | (1) [L] |
| 3 | 4.1255.1482.0 | (1) [R] |
| 4 | 4.1255.1497.0 | (1) [L] |
| 5 | 4.1255.1498.0 | (1) [R] |
| 6 | 9.1030.0004*2 | (10) M10 DIN 985-8 |
| 7 | 9.1048.0008.2 | (6) A10,5 DIN 9021 [] |
| 8 | 9.1048.0067.5 | (4) A13 DIN 9021 [] |
| 9 | 9.1058.0056*5 | (10) M10x25 DIN 603-8.8 |
| 49 | 4.1227.1030.0 | (1) = REF. 1-9 |

| REF. | ONDERDEELNR. PART NUMBER REFERENCE TEILNUMMER | AANTAL QUANTITY QUANTITE ANZAHL |
|------|--|--|
|------|--|--|



| SPLENDIMO | type nummer type number numéro de type Typnummer | vanaf serienummer as from serial number après numéro de serie ab Seriennummer | SPLENDIMO | type nummer type number numéro de type Typnummer | vanaf serienummer as from serial number après numéro de serie ab Seriennummer |
|-----------|---|--|------------------|---|--|
| 240 FC | 4.1232.0014.1 | 3000000 | 280 FC 320 FC | 4.1227.0023.1 | 3000000 |
| | 4.1232.0015.1 | 3003242 | | 4.1255.0000.1 | 10804 - 0511 |
| | 4.1232.0016.1 | 3000000 | | 4.1255.0001.1 | 10805 - 0539 |
| | 4.1232.0017.1 | 3000589 | | 4.1255.0002.1 | 10805 - 0520 |
| | 4.1232.0018.1 | 3000000 | | 4.1255.0003.1 | 3003496 |
| 280 FC | 4.1227.0017.1 | 3001070 | 4.1255.0004.1 | 3000000 | |
| | 4.1227.0018.1 | 3001080 | 4.1255.0005.1 | 3000000 | |
| | 4.1227.0019.1 | 10805 - 0513 | 4.1255.0006.1 | 3000000 | |
| | 4.1227.0020.1 | 3000756 | 4.1255.0007.1 | 3000000 | |
| | 4.1227.0021.1 | 3000000 | | | |



E219-03-01

| REF. | ONDERDEELNR. PART NUMBER REFERENCE TEILNUMMER | AANTAL QUANTITY QUANTITE ANZAHL | |
|------|--|--|--|
|------|--|--|--|

| REF. | ONDERDEELNR. PART NUMBER REFERENCE TEILNUMMER | AANTAL QUANTITY QUANTITE ANZAHL | |
|------|--|--|--|
|------|--|--|--|

240 280 320

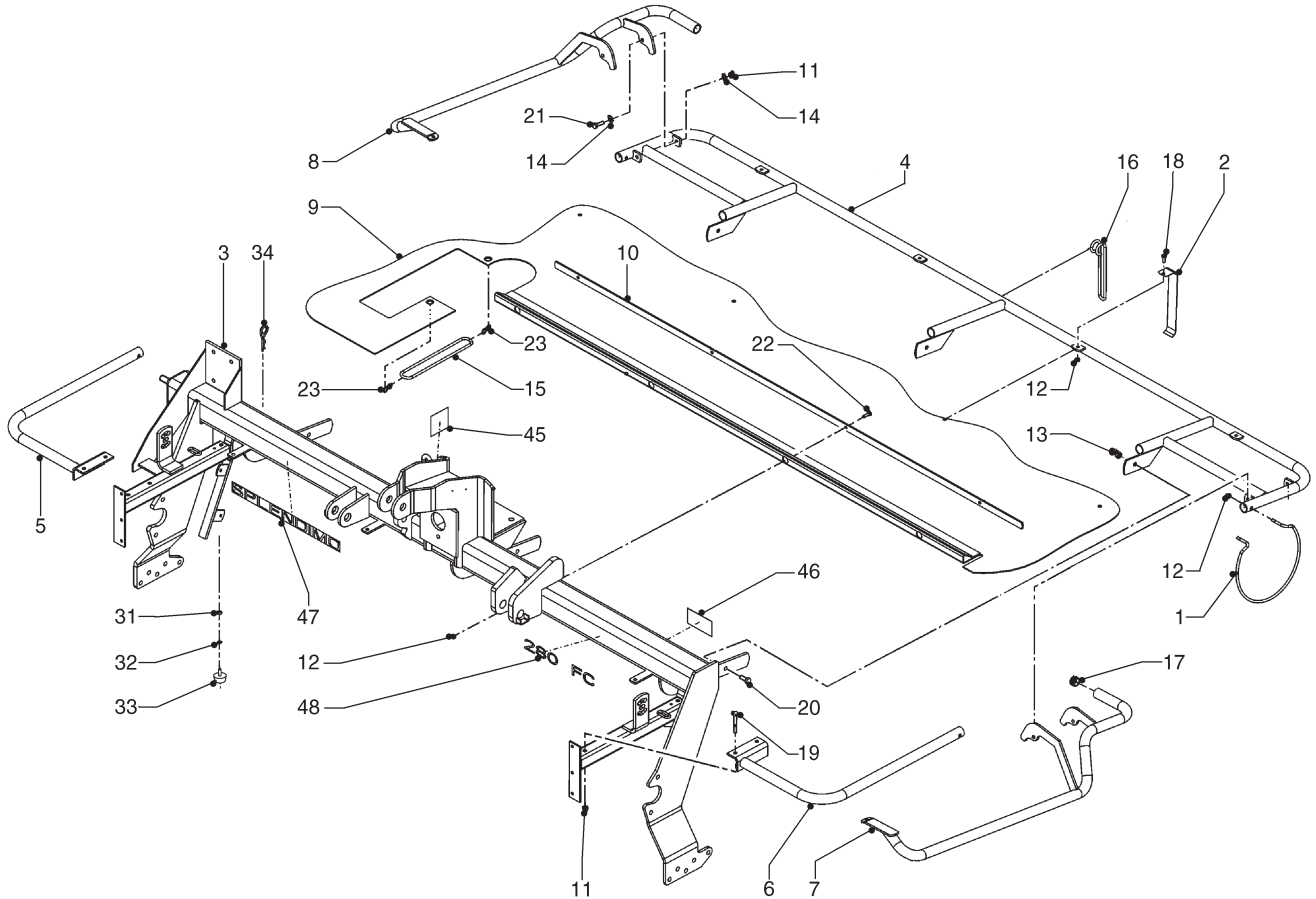
240 280 320

| | | | |
|----|---------------|---------------|---------------------|
| 1 | 4.1227.1024.0 | - (8) (10) | L= 535 |
| | 4.1280.1341.0 | - - (10) [x] | L= 430 |
| 2 | 4.1227.1027.0 | - (1) (1) [L] | |
| 3 | 4.1227.1028.0 | - (1) (1) [R] | |
| 4 | 4.1255.1237.0 | - - (2) | |
| | 4.1227.1025.0 | - (2) - [x] | |
| 5 | 4.1255.1238.0 | - - (2) | |
| | 4.1227.1026.0 | - (2) - [x] | |
| 6 | 4.1255.1239.0 | - - (2) | |
| | 4.1227.1029.0 | - (2) - [x] | |
| 7 | 9.1030.0012*3 | - (40) (46) | M8 DIN 985-8 |
| 8 | 9.1032.0002*5 | - (8) (10) | M8 DIN 315-G-5 |
| 9 | 9.1048.0004.5 | - (20) (20) | A8,4 DIN 125 [] |
| 10 | 9.1048.0005.6 | - (24) (30) | A8,4 DIN 9021 [] |
| 11 | 9.1048.0062.0 | - (24) (30) | A10 DIN 7349 [] |
| 12 | 9.1051.0001.6 | - (8) (10) | A8,2 DIN6798 [####] |
| 13 | 9.1058.0041*4 | - (24) (30) | M8x25 DIN 603-8.8 |
| 14 | 9.1113.0014*6 | - (8) (10) | M8x20 DIN 633-8.8 |
| 15 | 9.1113.0128*1 | - (6) (10) | M8x25 DIN 633-8.8 |
| | 9.1113.0014*6 | - (4) - | M8x20 DIN 633-8.8 |
| 16 | 9.1058.0031.1 | - - (6) | M8x16 DIN 603-A2-2 |
| | 9.1058.0041*4 | - (6) - | M8x25 DIN 603-8.8 |

| | | | |
|----|---------------|-------------|-----------------------|
| 21 | 4.1227.0680.0 | (1) (1) - | |
| 22 | 9.1029.0012*4 | (10) (10) - | |
| 23 | 9.1030.0013*4 | (2) (2) - | M12 DIN 985-8 |
| 24 | 9.1051.0002.0 | (2) (2) - | A10,5 DIN 6798 [####] |
| 25 | 9.1113.0027*5 | (2) (2) - | M10x20 DIN 933-8.8 |
| 26 | 9.1113.0125*5 | (2) (2) - | M12x35 DIN 933-8.8 |
| | 9.1113.0231*6 | (5) (5) - | M14x65 DIN 931-8.8 |
| 31 | 4.1255.1473.0 | - - (1) | |
| | 4.1227.1433.0 | - (1) - [x] | |
| 48 | 4.1227.0670.0 | (1) (1) - | = REF. 21-27 |
| 49 | 4.1255.1220.0 | - - (1) | = REF. 1-16 |
| | 4.1227.1000.0 | - (1) - [x] | = REF. 1-16 |

LELY

| SPLENDIMO | type number type number numéro de type Typnummer | vanaf serienummer as from serial number après numéro de serie ab Seriennummer | SPLENDIMO | type number type number numéro de type Typnummer | vanaf serienummer as from serial number après numéro de serie ab Seriennummer | |
|-----------|---|--|---------------|---|--|---------------|
| 240 FC | A | 4.1232.0014.1 | 280 FC | A | 4.1227.0023.1 | |
| | A | 4.1232.0015.1 | | 320 FC | B | 4.1255.0000.1 |
| | A | 4.1232.0016.1 | | | B | 4.1255.0001.1 |
| | A | 4.1232.0017.1 | | | B | 4.1255.0002.1 |
| A | 4.1232.0018.1 | B | 4.1255.0003.1 | | | |
| 280 FC | A | 4.1227.0017.1 | | | 10804 - 0511 | |
| | A | 4.1227.0018.1 | | | 10805 - 0539 | |
| | A | 4.1227.0019.1 | | | 10805 - 0520 | |
| | A | 4.1227.0020.1 | | | 3003496 | |
| | A | 4.1227.0021.1 | | | 3000000 | |
| | A | 4.1227.0021.1 | | | 3000000 | |



E228-03-01

| REF. | ONDERDEELNR. PART NUMBER REFERENCE TEILNUMMER | AANTAL QUANTITY QUANTITE ANZAHL | |
|------|--|--|--|
|------|--|--|--|

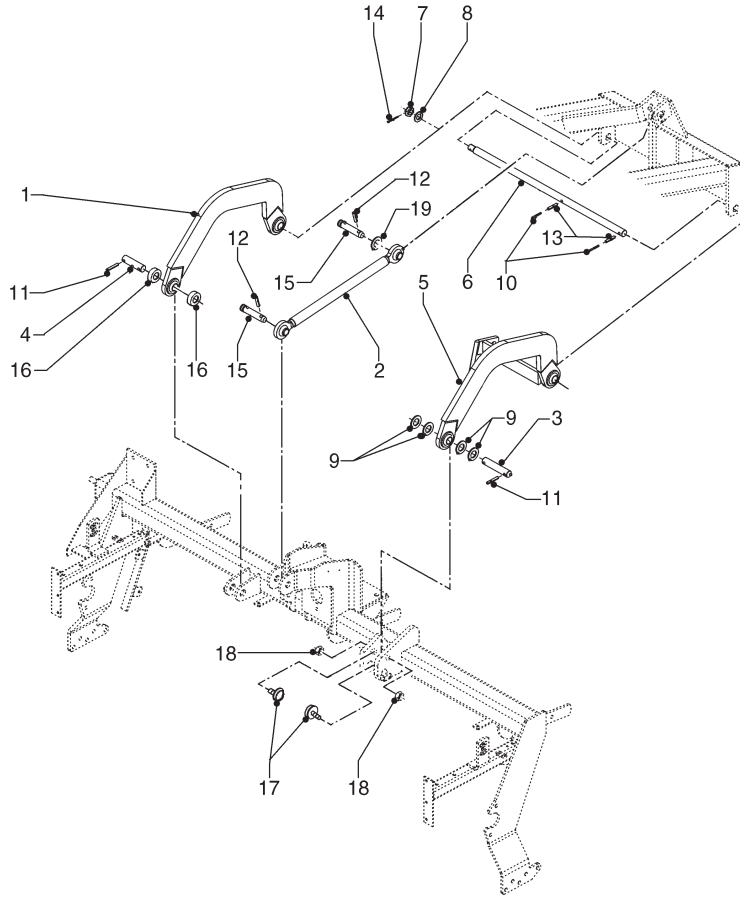
| | | | |
|----|-----------------|-------|-------------------|
| 1 | A 4.1210.1496.0 | 2 | |
| 2 | A 4.1211.0287.0 | 4 | |
| 3 | 4.1227.0261.0 | 1 | 280 FC |
| | 4.1232.0281.0 | 1 | [x]240 FC |
| | 4.1255.0260.0 | 1 | [x]320 FC |
| 4 | 4.1227.0420.0 | 1 | 280 FC |
| | 4.1232.0420.0 | 1 | [x]240 FC |
| 5 | A 4.1227.0450.0 | 1 | [L] |
| 6 | A 4.1227.0460.0 | 1 | [R] |
| 7 | A 4.1227.0541.0 | 1 | [R] |
| 8 | A 4.1227.0551.0 | 1 | [L] |
| 9 | 4.1227.1442.0 | 1 | 280 FC |
| | 4.1232.1489.0 | 1 | [x]240 FC |
| 10 | 4.1227.1481.0 | 1 | 280 FC |
| | 4.1232.1495.0 | 1 | [x]240 FC |
| 11 | A 9.1030.0004*2 | 8 | M10 DIN 985-8 |
| 12 | A 9.1030.0012*3 | 12 | M8 DIN 985-8 |
| 13 | A 9.1030.0013*4 | 2 / 3 | M12 DIN 985-8 |
| 14 | A 9.1049.0020.6 | 8 | Ø10,5 DIN 137 B |
| 15 | A 9.1054.0003.5 | 1 | Ø8x260 |
| 16 | A 9.1054.0004.6 | 1 | Ø8x400 |
| 17 | A 9.1108.0085.6 | 2 | Ø32 |
| 18 | A 9.1113.0014*6 | 4 | M8x20 DIN 933-8.8 |

| REF. | ONDERDEELNR. PART NUMBER REFERENCE TEILNUMMER | AANTAL QUANTITY QUANTITE ANZAHL | |
|------|--|--|--|
|------|--|--|--|

| | | | |
|----|-----------------|-------|-----------------------|
| 19 | A 9.1113.0041*5 | 4 | M10x70 DIN 931-8.8 |
| 20 | A 9.1113.0050*0 | 2 / 3 | M12x30 DIN 933-8.8 |
| 21 | A 9.1113.0117*4 | 4 | M10x35 DIN 933-8.8 |
| 22 | A 9.1113.0128*1 | 4 | M8x25 DIN 933-8.8 |
| 23 | A 9.1147.0005*5 | 2 | |
| 31 | B 9.1029.0005.4 | 2 | M10 DIN 934-8.8 |
| 32 | B 9.1051.0002.0 | 2 | A10,5 DIN 6798 [####] |
| 33 | B 9.1105.0011.4 | 2 | K50x22,5-M10x28 |
| 34 | B 9.1124.0004.6 | 2 | |
| 45 | 9.1170.0173.3 | 1 | "↑" |
| 46 | 9.1170.0419.4 | 1 | |
| 47 | 9.1170.0449.6 | 1 | "SPLENDIMO" |
| 48 | 9.1170.0507.1 | 1 | "280 FC" |
| | 9.1170.0508.2 | 1 | [x]"240FC" |
| | 9.1170.0494.2 | 1 | [x]"320FC" |

LELY

| SPLENDIMO | type number type number numéro de type Typnummer | vanaf serienummer as from serial number après numéro de serie ab Seriennummer | SPLENDIMO | type number type number numéro de type Typnummer | vanaf serienummer as from serial number après numéro de serie ab Seriennummer |
|-----------|---|--|------------------|---|--|
| 240 FC | 4.1232.0014.1 | 3000000 | 280 FC 320 FC | 4.1227.0023.1 | 3000000 |
| | 4.1232.0015.1 | 3003242 | | 4.1255.0000.1 | 10804 - 0511 |
| | 4.1232.0016.1 | 3000000 | | 4.1255.0001.1 | 10805 - 0539 |
| | 4.1232.0017.1 | 3000589 | | 4.1255.0002.1 | 10805 - 0520 |
| 280 FC | 4.1232.0018.1 | 3000000 | 4.1255.0003.1 | 3003496 | |
| | 4.1227.0017.1 | 3001070 | 4.1255.0004.1 | 3000000 | |
| | 4.1227.0018.1 | 3001080 | 4.1255.0005.1 | 3000000 | |
| | 4.1227.0019.1 | 10805 - 0513 | 4.1255.0006.1 | 3000000 | |
| | 4.1227.0020.1 | 3000756 | 4.1255.0007.1 | 3000000 | |
| | 4.1227.0021.1 | 3000000 | | | |



E234-01-01

| REF. | ONDERDEELNR. PART NUMBER REFERENCE TEILNUMMER | AANTAL QUANTITY QUANTITE ANZAHL | |
|------|--|--|--|
|------|--|--|--|

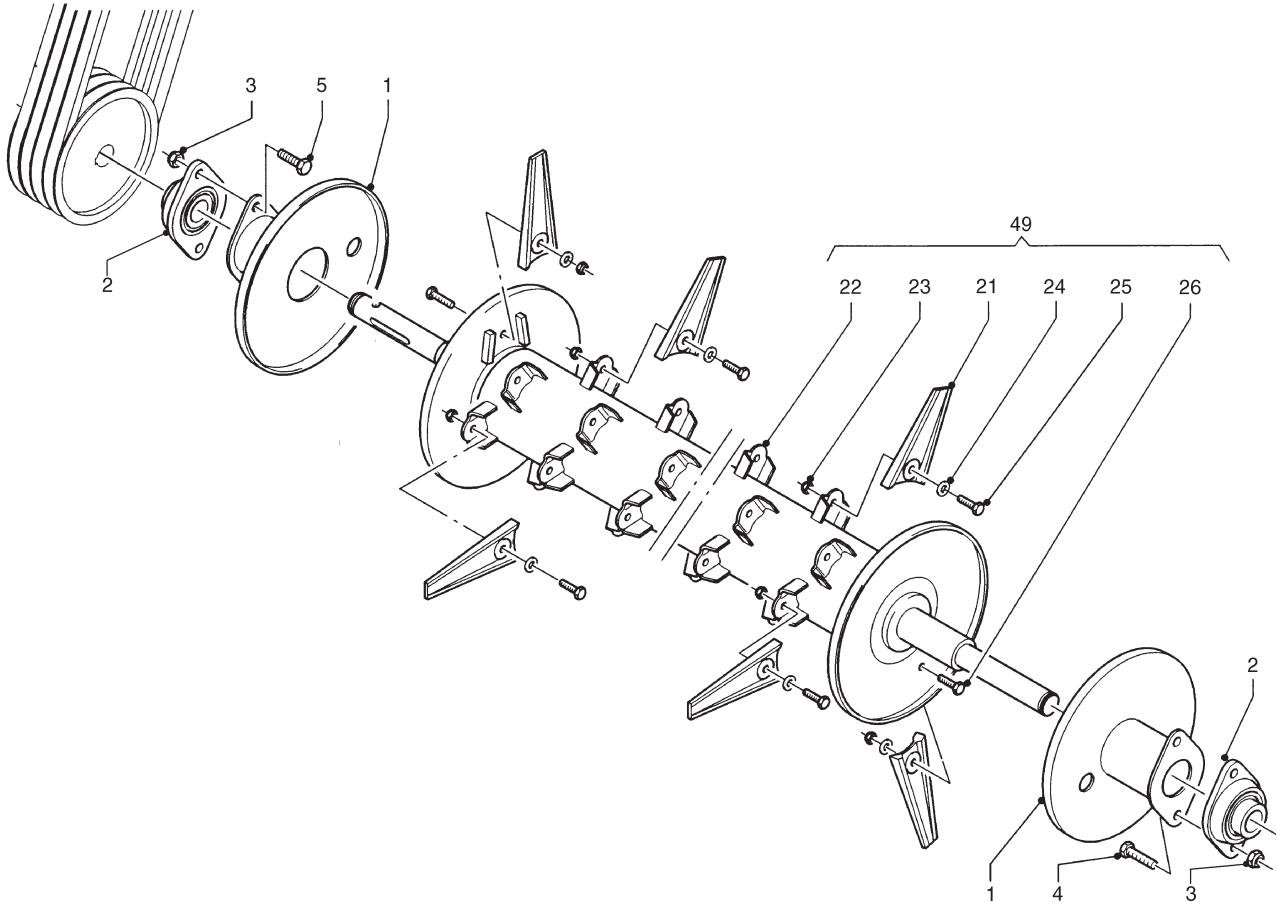
240 280 320

| | | | |
|----|---------------|-------|--------------------|
| 1 | 4.1227.0380.0 | 1 1 1 | [L] |
| 2 | 4.1227.0401.0 | 1 1 1 | L= 650 mm |
| 3 | 4.1227.1478.0 | 1 1 - | Ø28,6x145 |
| | 4.1255.1486.0 | - - 1 | [x]Ø28,6x142 |
| 4 | 4.1227.1479.0 | 1 1 1 | |
| 5 | 4.1255.0390.0 | 1 1 1 | [R] |
| 6 | 4.1255.1487.0 | 1 1 1 | |
| 7 | 9.1031.0004.1 | 1 1 1 | |
| 8 | 9.1048.0020*0 | 1 1 1 | A24 DIN 125 [—] |
| 9 | 9.1048.0044*3 | 4 4 4 | A31 DIN 125 [—] |
| 10 | 9.1070.0019.5 | 2 2 2 | Ø6x50 DIN 1481 |
| 11 | 9.1070.0028.0 | 4 4 - | Ø10x60 DIN 1481 |
| | 9.1070.0039.4 | - - 4 | [x]Ø10x50 DIN 1481 |
| 12 | 9.1070.0030.2 | 2 2 2 | Ø12x50 DIN 1481 |
| 13 | 9.1070.0039.4 | 2 2 2 | Ø10x50 DIN 1481 |
| 14 | 9.1072.0007.5 | 1 1 1 | 5x45 DIN 94 |
| 15 | 9.1088.0005.1 | 2 2 - | 25-95 |
| | 9.1088.0016.5 | - - 2 | [x]25,4-97 |
| 16 | 2.1004.0728.0 | - - 2 | |
| 17 | 9.1105.0011.4 | - - 2 | K50x22,5-M10x28 |
| 18 | 9.1030.0004*2 | - - 2 | M10 DIN 985-8 |
| 19 | 9.1048.0045*5 | - - 1 | 26 DIN 126 |

| REF. | ONDERDEELNR. PART NUMBER REFERENCE TEILNUMMER | AANTAL QUANTITY QUANTITE ANZAHL | |
|------|--|--|--|
|------|--|--|--|

LELY

| SPLENDIMO | type number type number numéro de type Typnummer | vanaf serienummer as from serial number après numéro de serie ab Seriennummer | SPLENDIMO | type number type number numéro de type Typnummer | vanaf serienummer as from serial number après numéro de serie ab Seriennummer |
|-----------|---|--|------------------|---|--|
| 240 FC | 4.1232.0014.1 | 3000000 | 280 FC 320 FC | 4.1227.0023.1 | 3000000 |
| | 4.1232.0015.1 | 3003242 | | 4.1255.0000.1 | 10804 - 0511 |
| | 4.1232.0016.1 | 3000000 | | 4.1255.0001.1 | 10805 - 0539 |
| | 4.1232.0017.1 | 3000589 | | 4.1255.0002.1 | 10805 - 0520 |
| 280 FC | 4.1232.0018.1 | 3000000 | 4.1255.0003.1 | 3003496 | |
| | 4.1227.0017.1 | 3001070 | 4.1255.0004.1 | 3000000 | |
| | 4.1227.0018.1 | 3001080 | 4.1255.0005.1 | 3000000 | |
| | 4.1227.0019.1 | 10805 - 0513 | 4.1255.0006.1 | 3000000 | |
| | 4.1227.0020.1 | 3000756 | 4.1255.0007.1 | 3000000 | |
| | 4.1227.0021.1 | 3000000 | | | |



E093-03-00

| REF. | ONDERDEELNR. PART NUMBER REFERENCE TEILNUMMER | AANTAL QUANTITY QUANTITE ANZAHL | |
|------|--|--|--|
|------|--|--|--|

240 280 320

| | | | |
|---|--------------------------------|----------------|------------------------------|
| 1 | 4.1220.1170.0 4.1220.1340.0 | 2 2 - - - 2 | [x] |
| 2 | 9.1008.0018.3 9.1008.0022.0 | 2 2 - - - 2 | FYTB 35FM-C3 [x]FYTB 40FM |
| 3 | 9.1030.0015*6 | 4 4 4 | M14 DIN 985-8 |
| 4 | 9.1113.0070*6 9.1113.0246*0 | 2 - - - - 2 | M14x50 DIN 931-8.8 |
| 5 | 9.1113.0246*0 | 2 2 2 | M14x55 DIN 931-8.8 |

| REF. | ONDERDEELNR. PART NUMBER REFERENCE TEILNUMMER | AANTAL QUANTITY QUANTITE ANZAHL | |
|------|--|--|--|
|------|--|--|--|

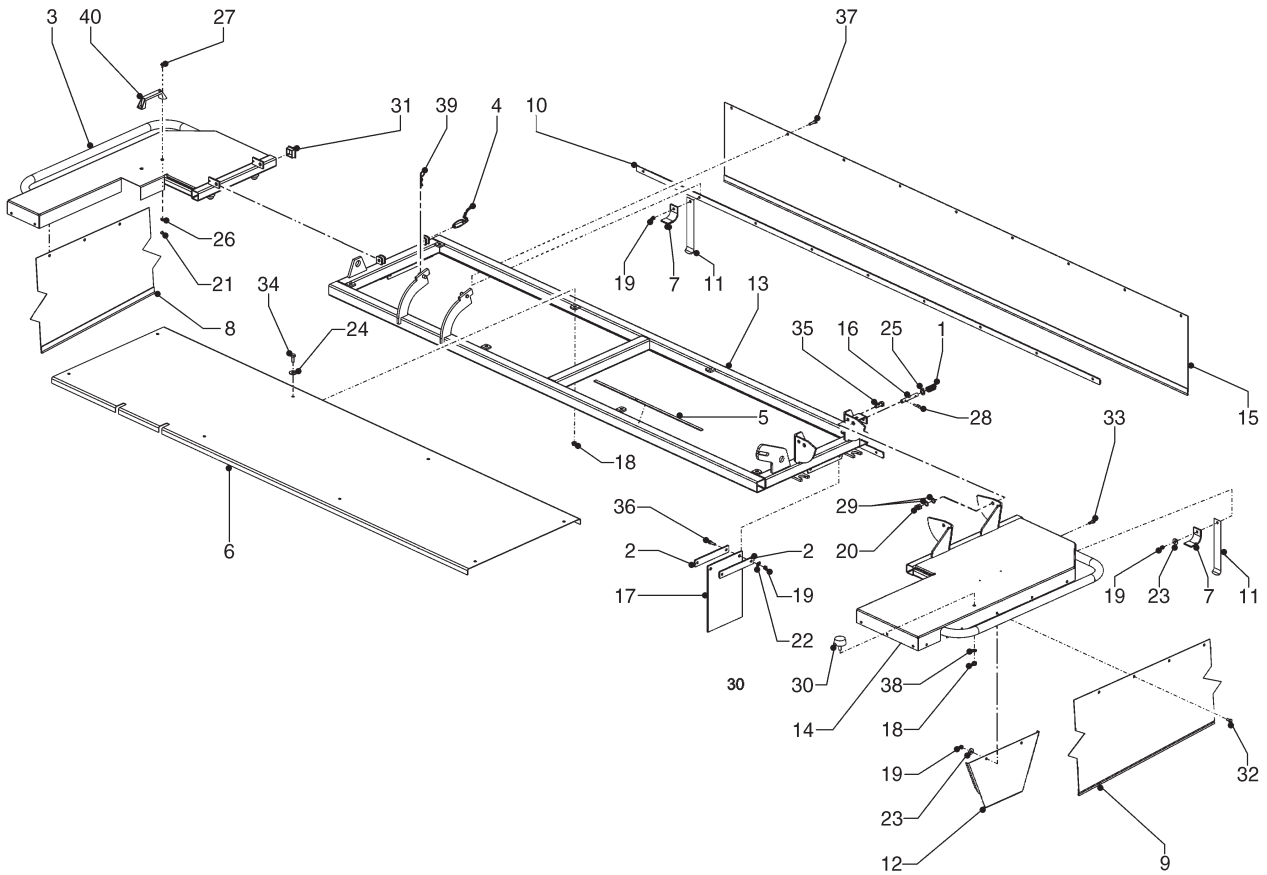
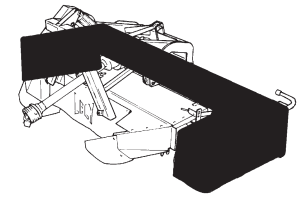
240 280 320

| | | | |
|----|---|-------------------------|---|
| 21 | 4.1207.0228.0 | 76 95 114 | |
| 22 | 4.1220.1511.0 4.1224.0701.0 4.1241.0561.0 | - 1 - 1 - - - - 1 | [x] [x] |
| 23 | 9.1030.0004*2 | 76 95 114 | M10 DIN 985-8 |
| 24 | 9.1048.0008*2 | 76 95 114 | A10,5 DIN 9021 [] |
| 25 | 9.1113.0029*0 | 74 93 112 | M10x25 DIN 933-8.8 |
| 26 | 9.1113.0120*0 | 2 2 2 | M10x30 DIN 933-8.8 |
| 49 | 4.1220.1500.0 4.1224.0710.0 4.1241.0551.0 | - 1 - 1 - - - - 1 | = REF. 21-26 [x] [x] = REF. 21-26 |

LELY

SPLENDIMO

320 FC

type number
type number
numéro de type
Typnummer4.1255.0000.1
4.1255.0001.1
4.1255.0002.1
4.1255.0003.1vanaf serienummer
as from serial number
après numéro de série
ab Seriennummer10804 - 0511
10804 - 0539
10804 - 0520
3003496

E124-02-01

| REF. | ONDERDEELNR. PART NUMBER REFERENCE TEILNUMMER | AANTAL QUANTITY QUANTITE ANZAHL |
|------|--|--|
|------|--|--|

| | | |
|----|---------------|----|
| 1 | 4.1002.0093.0 | 1 |
| 2 | 4.1241.0502.0 | 4 |
| 3 | 4.1241.0532.0 | 1 |
| 4 | 4.1241.1010.0 | 2 |
| 5 | 4.1241.1900.0 | 7 |
| 6 | 4.1241.1901.0 | 1 |
| 7 | 4.1241.1902.0 | 6 |
| 8 | 4.1241.1912.0 | 1 |
| 9 | 4.1241.1913.0 | 1 |
| 10 | 4.1241.1914.0 | 1 |
| 11 | 4.1241.1988.0 | 6 |
| 12 | 4.1241.1993.0 | 2 |
| 13 | 4.1255.0361.0 | 1 |
| 14 | 4.1255.0450.0 | 1 |
| 15 | 4.1255.1476.0 | 1 |
| 16 | 4.1255.1477.0 | 1 |
| 17 | 4.1255.1488.0 | 2 |
| 18 | 9.1030.0004*2 | 9 |
| 19 | 9.1030.0012*3 | 38 |
| 20 | 9.1030.0013*4 | 2 |
| 21 | 9.1030.0033.3 | 2 |
| 22 | 9.1048.0004.5 | 4 |
| 23 | 9.1048.0005.6 | 25 |
| 24 | 9.1048.0008.2 | 8 |
| 25 | 9.1048.0012.6 | 1 |

M10 DIN 985-8
M8 DIN 985-8
M12 DIN 985-8M4 DIN 985-A2-2
A8,4 DIN 125
A8,4 DIN 9021
A10,5 DIN 9021
A13 DIN 125

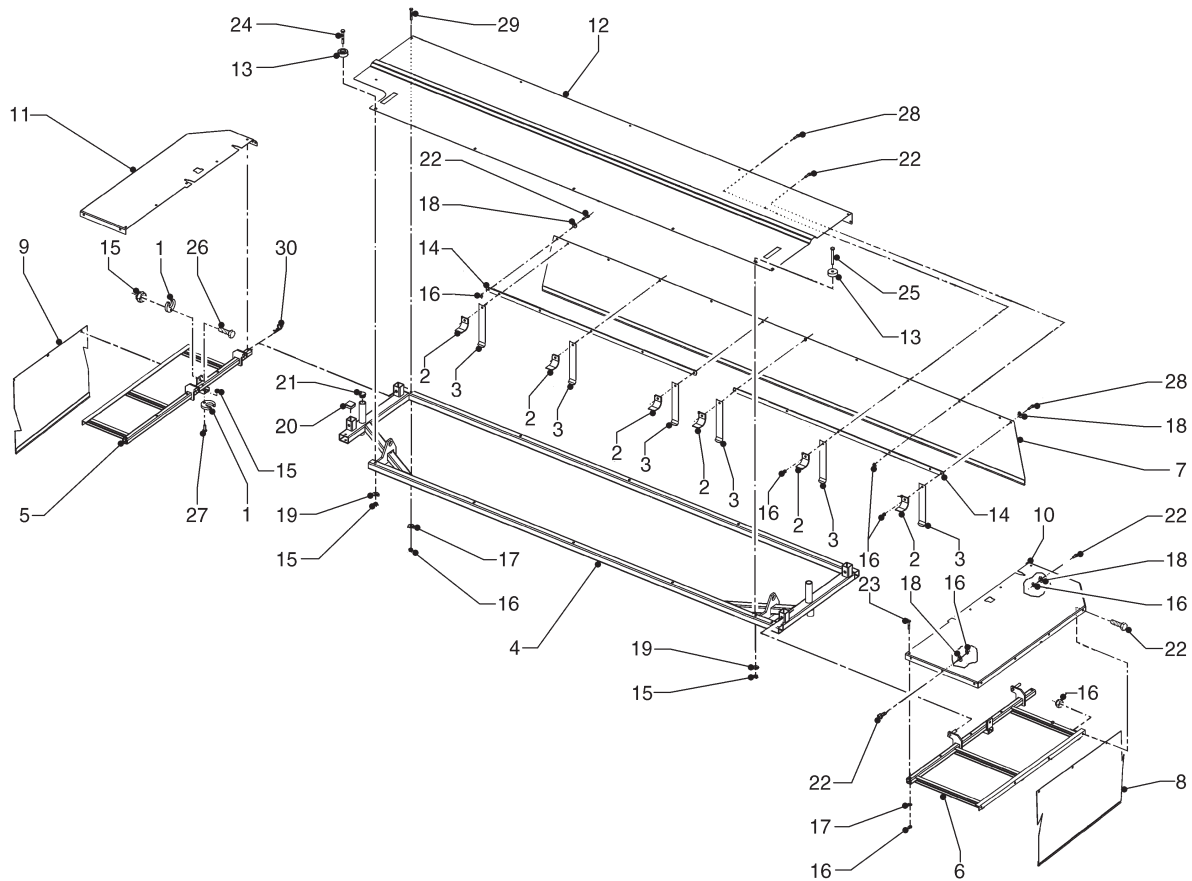
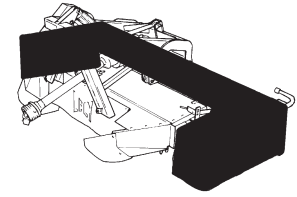
| REF. | ONDERDEELNR. PART NUMBER REFERENCE TEILNUMMER | AANTAL QUANTITY QUANTITE ANZAHL |
|------|--|--|
|------|--|--|

| | | |
|----|---------------|----|
| 26 | 9.1048.0089.6 | 2 |
| 27 | 9.1060.0036.4 | 2 |
| 28 | 9.1070.0018.4 | 2 |
| 29 | 9.1093.0094.1 | 4 |
| 30 | 9.1105.0011.4 | 1 |
| 31 | 9.1108.0065.0 | 4 |
| 32 | 9.1113.0013*5 | 23 |
| 33 | 9.1113.0014*6 | 2 |
| 34 | 9.1113.0029*0 | 8 |
| 35 | 9.1113.0050*0 | 2 |
| 36 | 9.1113.0128*1 | 4 |
| 37 | 9.1113.0130*3 | 9 |
| 38 | 9.1121.0004.2 | 1 |
| 39 | 9.1124.0002.4 | 1 |
| 40 | 9.1141.0020.5 | 1 |

A4,3 DIN 125-A2
M4x16 DIN 963-A2-2
Ø6x40 DIN 1481
15x20x0.5 DIN 988
K50x22,5-M10x28
40x40x3
M8x16 DIN 933-8.8
M8x20 DIN 933-8.8
M10x25 DIN 933-8.8
M12x30 DIN 933-8.8
M8x25 DIN 933-8.8
M8x30 DIN 933-8.8
A10 DIN 127

LELY

| SPLENDIMO | type number type number número de type Typnummer | vanaf serienummer as from serial number après numéro de serie ab Seriennummer |
|-----------|---|--|
| 320 FC | 4.1255.0004.1 | 3000000 |
| | 4.1255.0005.1 | 3000000 |
| | 4.1255.0006.1 | 3000000 |
| | 4.1255.0007.1 | 3000000 |



E230-02-01

| REF. | ONDERDEELNR. PART NUMBER REFERENCE TEILNUMMER | AANTAL QUANTITY QUANTITE ANZAHL |
|------|--|--|
|------|--|--|

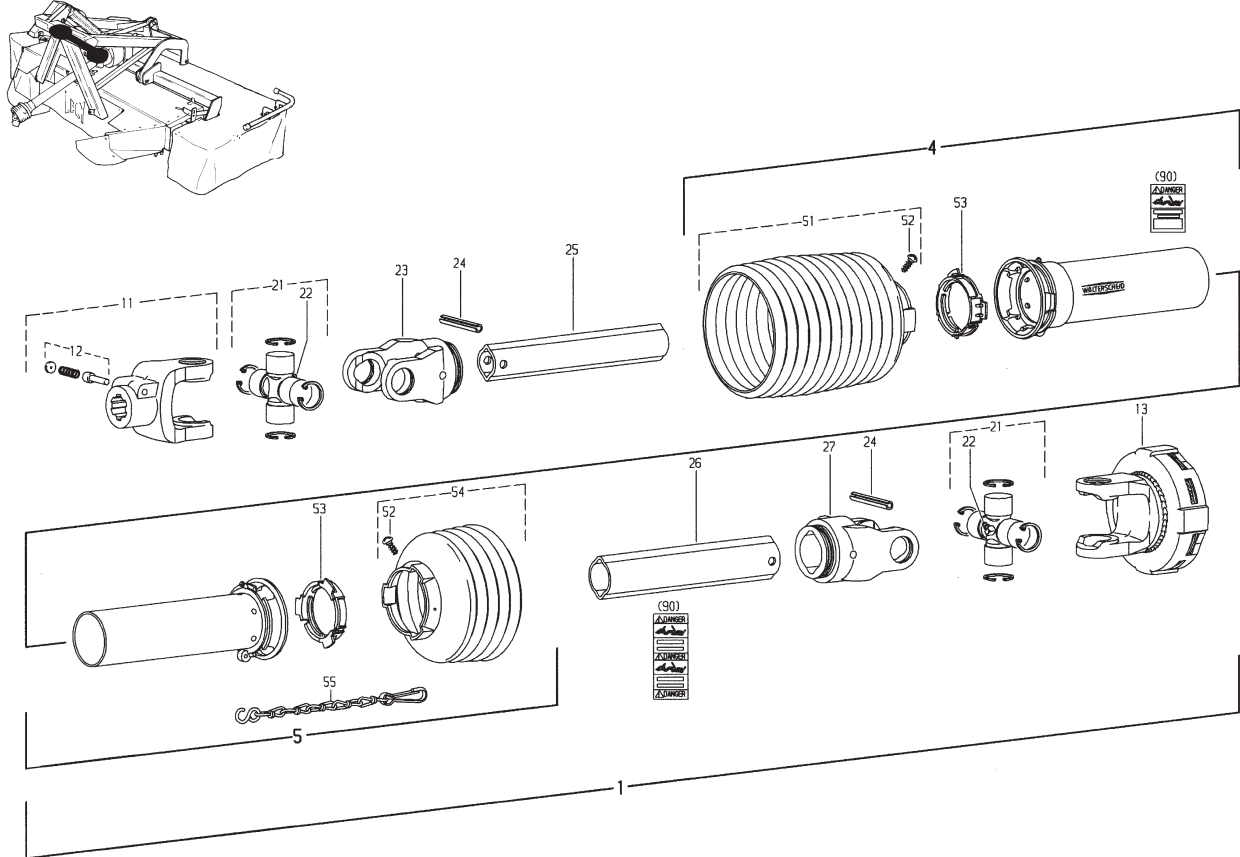
| | | |
|----|---------------|--------------------|
| 1 | 4.1225.1486.0 | 4 |
| 2 | 4.1241.1902.0 | 6 |
| 3 | 4.1241.1988.0 | 6 |
| 4 | 4.1255.0362.0 | 1 |
| 5 | 4.1255.0500.0 | 1 |
| | | [L] |
| 6 | 4.1255.0510.0 | 1 |
| | | [R] |
| 7 | 4.1255.1465.0 | 1 |
| 8 | 4.1255.1466.0 | 1 |
| | | [R] |
| 9 | 4.1255.1467.0 | 1 |
| | | [L] |
| 10 | 4.1255.1468.0 | 1 |
| | | [R] |
| 11 | 4.1255.1469.0 | 1 |
| | | [L] |
| 12 | 4.1255.1470.0 | 1 |
| 13 | 4.1255.1478.0 | 2 |
| 14 | 4.1256.1966.0 | 2 |
| 15 | 9.1030.0004*2 | 6 |
| | | M10 DIN 985-8 |
| 16 | 9.1030.0012*3 | 54 |
| | | M8 DIN 985-8 |
| 17 | 9.1048.0004.5 | 20 |
| | | A8,4 DIN 125 [—] |
| 18 | 9.1048.0005.6 | 16 |
| | | A8,4 DIN 9021 [—] |
| 19 | 9.1048.0008.2 | 2 |
| | | A10,5 DIN 9021 [—] |
| 20 | 9.1108.0065.0 | 4 |
| | | 40x40x3 |
| 21 | 9.1108.0085.6 | 2 |
| | | Ø32 |
| 22 | 9.1113.0014*6 | 28 |
| | | M8x20 DIN 933-8.8 |
| 23 | 9.1113.0018*3 | 10 |
| | | M8x45 DIN 931-8.8 |
| 24 | 9.1113.0041*5 | 1 |
| | | M10x70 DIN 931-8.8 |
| 25 | 9.1113.0100*1 | 1 |
| | | M10x90 DIN 931-8.8 |

| REF. | ONDERDEELNR. PART NUMBER REFERENCE TEILNUMMER | AANTAL QUANTITY QUANTITE ANZAHL |
|------|--|--|
|------|--|--|

| | | |
|----|---------------|--------------------|
| 26 | 9.1113.0117*4 | 2 |
| | | M10x35 DIN 933-8.8 |
| 27 | 9.1113.0120*0 | 2 |
| | | M10x30 DIN 933-8.8 |
| 28 | 9.1113.0130*3 | 6 |
| | | M8x30 DIN 933-8.8 |
| 29 | 9.1113.0175*6 | 10 |
| | | M8x60 DIN 931-8.8 |
| 30 | 9.1124.0003.5 | 2 |

LELY

| SPLENDIMO | type number type number número de type Typnummer | vanaf serienummer as from serial number après numéro de serie ab Seriennummer | SPLENDIMO | type number type number número de type Typnummer | vanaf serienummer as from serial number après numéro de serie ab Seriennummer |
|-----------|---|--|-----------|---|--|
| 240 FC | A | 4.1232.0014.1 | 280 FC | B | 4.1227.0017.1 |
| | A | 4.1232.0015.1 | | B | 4.1227.0018.1 |
| | A | 4.1232.0016.1 | | B | 4.1227.0019.1 |
| | A | 4.1232.0017.1 | | B | 4.1227.0020.1 |
| | A | 4.1232.0018.1 | | B | 4.1227.0021.1 |
| | | 3000000 | B | 4.1227.0023.1 | 3000000 |
| | | 3003242 | | | 10805 - 0513 |
| | | 3000000 | | | 3000000 |
| | | 3000589 | | | 3000000 |
| | | 3000000 | | | 3000000 |



Ew006-03-01

| REF. | ONDERDEELNR. PART NUMBER REFERENCE TEILNUMMER | AANTAL QUANTITY QUANTITE ANZAHL | |
|------|--|--|--|
|------|--|--|--|

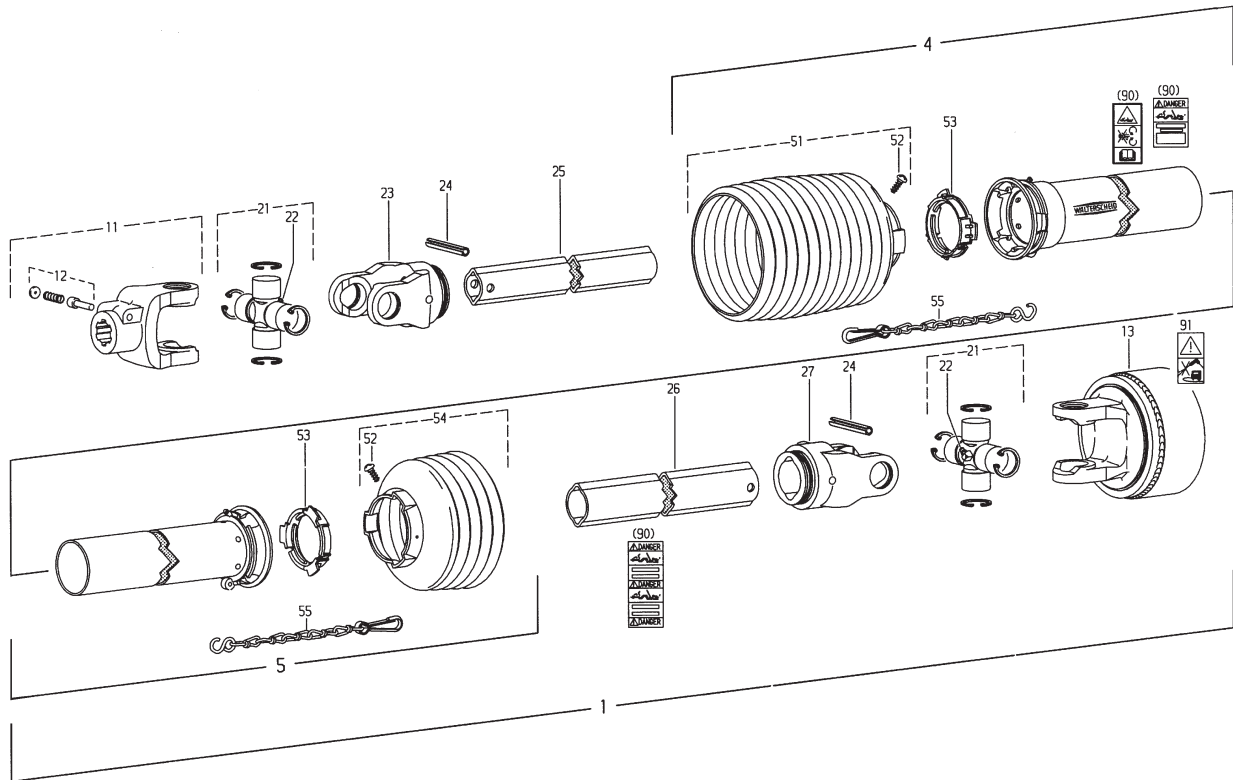
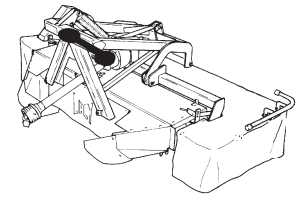
| | | 240 FC | 540+1000/min. |
|----|-----------------|--------|---|
| 1 | A 9.1154.0191.2 | 1 | [x]W2300-SC15SW-375-K92 = REF. 11-90 |
| 4 | 85.135 | 1 | SDH15SW-A180-RP12-K |
| 5 | 85.134 | 1 | SDH15SW-J180-RP12-K |
| 11 | 21.10.00 | 1 | AG2300-1.3/8" (6) |
| 12 | 33.91.07 | 1 | AGRASET 101 |
| 13 | 56.219.16 | 1 | K92-2300-1.3/8" (6)ZV M= 900Nm |
| 21 | 21.00.00 | 2 | |
| 22 | 63.27.00 | 2 | BM8x1 |
| 23 | 21.11.00 | 1 | RG 2300-Ov |
| 24 | 61.05.04 | 2 | Ø10x65 DIN 1481 |
| 25 | 75.15.16 | 1 | Ov-250 |
| 26 | 75.15.16 | 1 | L-240 |
| 27 | 21.12.00 | 1 | RG 2300-1 |
| 51 | 85.15.42 | 1 | n= 12 |
| 52 | 60.15.00 | 2 | 4x10 |
| 53 | 82.83.06 | 2 | |
| 54 | 85.15.36 | 1 | n= 6 |
| 55 | 82.36.03 | 1 | |
| 90 | 11.87.45 | 1 | AGRASET 207 |

| REF. | ONDERDEELNR. PART NUMBER REFERENCE TEILNUMMER | AANTAL QUANTITY QUANTITE ANZAHL | |
|------|--|--|--|
|------|--|--|--|

| | | 280 FC | 540+1000/min. |
|----|-----------------|--------|---|
| 1 | B 9.1154.0178.3 | 1 | W2300-SC15SW-460-K92 900Nm = REF. 11-90 |
| | B 9.1154.0200.4 | (1) | [x]W2300-SC15SW-460-K92/4 1050Nm = REF. 11-90 |
| 4 | 85.135 | 1 | SDH15SW-A270-RP12-K |
| 5 | 85.134 | 1 | SDH15SW-J270-RP12-K |
| 11 | 21.10.00 | 1 | AG 2300-1.3/8" (6) |
| 12 | 33.91.07 | 1 | AGRASET 101 |
| 13 | 56.219.16 | 1 | K92-2300-1.3/8" (6)ZV M= 900Nm |
| | 56.218.16 | (1) | K92/4-2300-1.3/8" (6)ZV M= 1050Nm |
| 21 | 21.00.00 | 2 | |
| 22 | 63.27.00 | 2 | BM 8x1 |
| 23 | 21.11.00 | 1 | RG 2300-Ov |
| 24 | 61.05.04 | 2 | Ø10x65 DIN 1481 |
| 25 | 75.11.16 | 1 | Ov-340 |
| 26 | 75.15.16 | 1 | L-325 |
| 27 | 21.12.00 | 1 | RG 2300-1 |
| 51 | 85.15.42 | 1 | n= 12 |
| 52 | 60.15.00 | 2 | 4x10 |
| 53 | 82.83.06 | 2 | |
| 54 | 85.15.36 | 1 | n= 6 |
| 55 | 82.36.03 | 1 | |
| 90 | 11.87.45 | 1 | AGRASET 207 |

LELY

| SPLENDIMO | type number type number numéro de type Typnummer | vanaf serienummer as from serial number après numéro de serie ab Seriennummer |
|-----------|--|--|
| 320 FC | 4.1255.0000.1 4.1255.0001.1 4.1255.0002.1 4.1255.0003.1 | 10804 - 0511 10805 - 0539 10805 - 0520 3003496 |



Ew006-04-01

| REF. | ONDERDEELNR. PART NUMBER REFERENCE TEILNUMMER | AANTAL QUANTITY QUANTITE ANZAHL | 320 FC | 540+1000/min. |
|------|--|--|--------|---------------|
|------|--|--|--------|---------------|

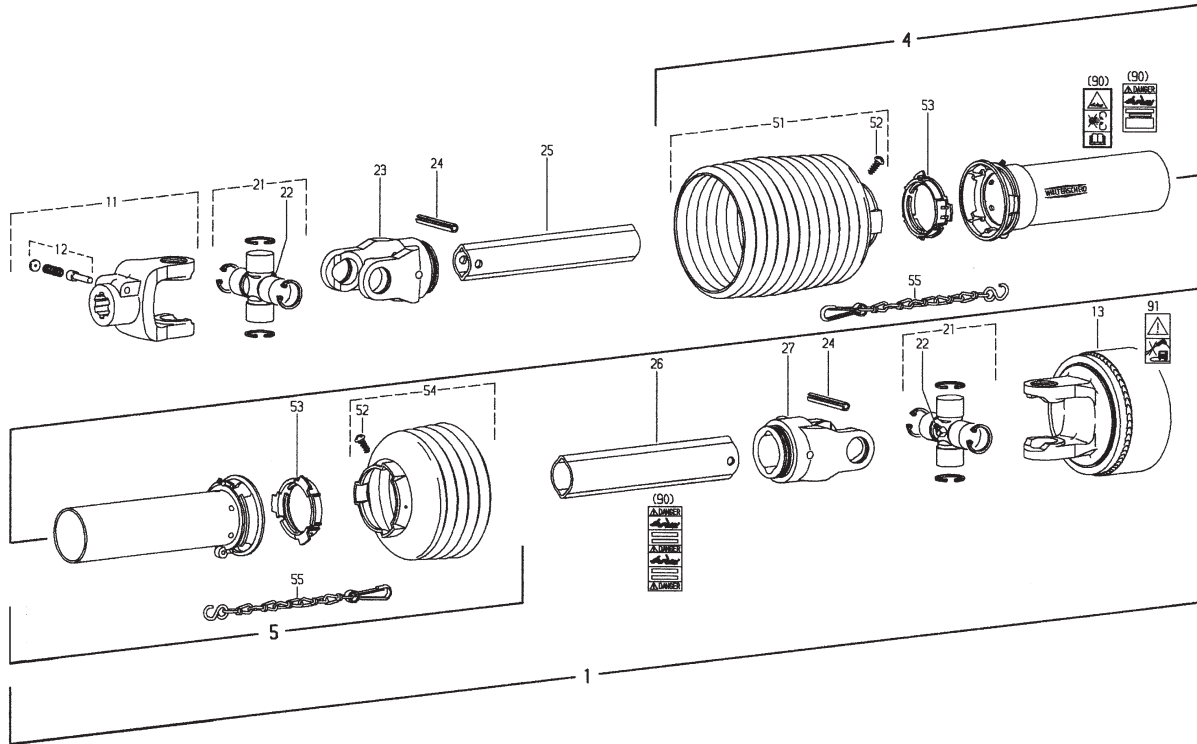
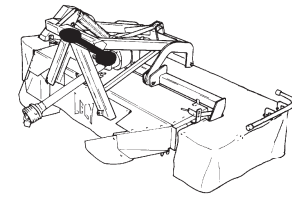
| | | | | |
|----|---------------|-----|---|--|
| 1 | 9.1154.0199.3 | (1) | [x]W2300-SC15SW-560-K92/4 1050Nm = REF. 11-90 | |
| 4 | 85.135 | 1 | SDH15SW-A270-RP12-K | |
| 5 | 85.134 | 1 | SDH15SW-J270-RP12-K | |
| 11 | 21.10.00 | 1 | AG 2300-1.3/8" (6) | |
| 12 | 33.91.07 | 1 | AGRASET 101 | |
| 13 | 56.218.16 | 1 | K92/4-2300-1.3/8" (6)ZV M= 1050Nm | |
| 21 | 21.00.00 | 2 | | |
| 22 | 63.27.00 | 2 | BM8x1 | |
| 23 | 21.11.00 | 1 | RG 2300-Ov | |
| 24 | 61.05.04 | 2 | Ø10x65 DIN 1481 | |
| 25 | 75.11.16 | 1 | Ov-440 | |
| 26 | 75.15.16 | 1 | L-425 | |
| 27 | 21.12.00 | 1 | RG 2300-1 | |
| 51 | 85.15.42 | 1 | n= 12 | |
| 52 | 60.15.00 | 2 | 4x10 | |
| 53 | 82.83.06 | 2 | | |
| 54 | 85.15.36 | 1 | n= 6 | |
| 55 | 82.36.03 | 1 | | |
| 90 | 11.87.45 | 1 | AGRASET 207 | |

| REF. | ONDERDEELNR. PART NUMBER REFERENCE TEILNUMMER | AANTAL QUANTITY QUANTITE ANZAHL | 320 FC | 540+1000/min. |
|------|--|--|--------|---------------|
|------|--|--|--------|---------------|

| | | | | |
|-----|---------------|---|---|--|
| 1 A | 9.1154.0216.6 | 1 | W2300-SC15SW-560-K64/1R 1200Nm = REF. 11-91 | |
| 4 | 85.135 | 1 | SDH15SW-A270-RP12-K | |
| 5 | 85.134 | 1 | SDH15SW-J270-RP12-K | |
| 11 | 21.10.00 | 1 | AG 2300-1.3/8" (6) | |
| 12 | 33.91.07 | 1 | AGRASET 101 | |
| 13 | 59.110.11 | 1 | K64/1R-2300-1.3/8" (6)ZV M= 1200Nm | |
| 21 | 21.00.00 | 2 | | |
| 22 | 63.27.00 | 2 | BM8x1 | |
| 23 | 21.11.00 | 1 | RG 2300-Ov | |
| 24 | 61.05.04 | 2 | Ø10x65 DIN 1481 | |
| 25 | 75.11.16 | 1 | Ov-440 | |
| 26 | 75.15.16 | 1 | L-425 | |
| 27 | 21.12.00 | 1 | RG 2300-1 | |
| 51 | 85.15.42 | 1 | n= 12 | |
| 52 | 60.15.00 | 2 | 4x10 | |
| 53 | 82.83.06 | 2 | | |
| 54 | 85.15.35 | 1 | n= 5 | |
| 55 | 82.36.03 | 1 | | |
| 90 | 11.87.45 | 1 | AGRASET 207 | |
| 91 | 16.61.181 | 1 | | |

LELY

| SPLENDIMO | type number type number numéro de type Typnummer | vanaf serienummer as from serial number après numéro de série ab Seriennummer |
|-----------|--|--|
| 320 FC | 4.1255.0004.1 4.1255.0005.1 4.1255.0006.1 4.1255.0007.1 | 3000000 3000000 3000000 3000000 |



Ew006-05-01

| REF. | ONDERDEELNR. PART NUMBER REFERENCE TEILNUMMER | AANTAL QUANTITY QUANTITE ANZAHL | |
|------|--|--|--|
|------|--|--|--|

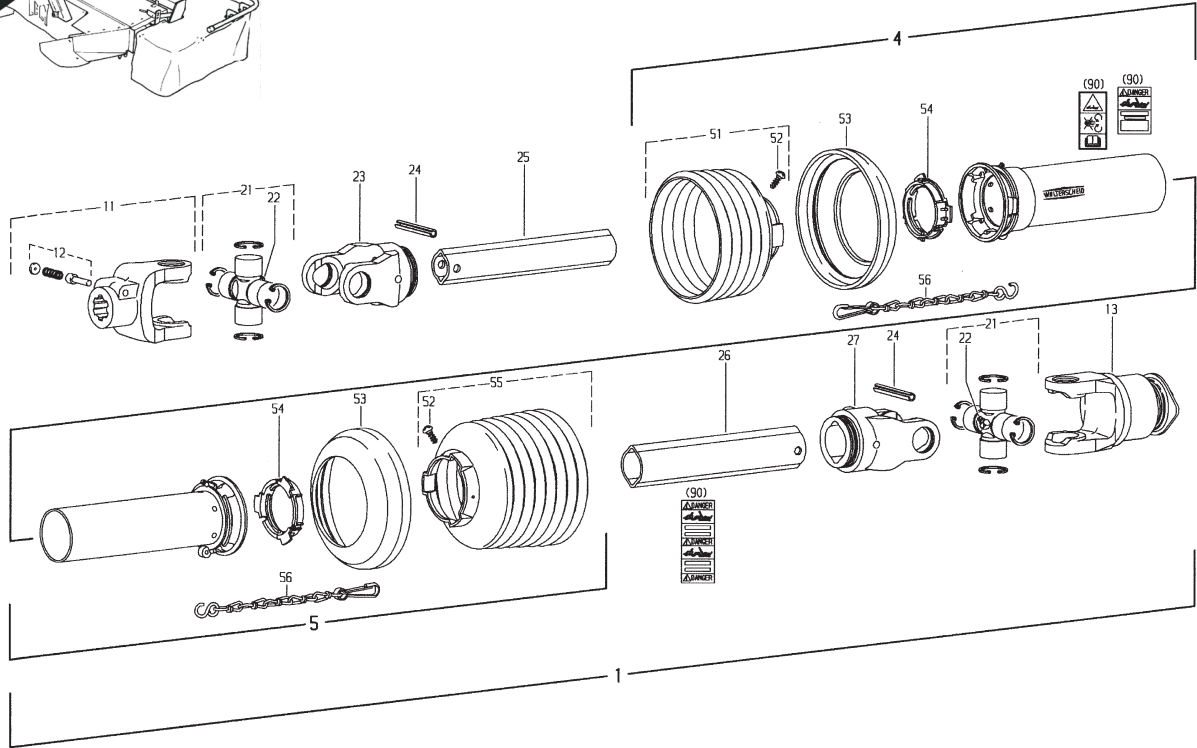
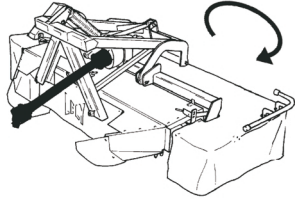
| | | 320 FC | 540+1000/min. |
|----|---------------|--------|---|
| 1 | 9.1154.0250.5 | (1) | [x]W2300-SC15SW-660-K92/4 1050Nm = REF. 11-90 |
| 4 | 85.135 | 1 | SDH15SW-A270-RP12-K |
| 5 | 85.134 | 1 | SDH15SW-J270-RP12-K |
| 11 | 21.10.00 | 1 | AG 2300-1.3/8" (6) |
| 12 | 33.91.07 | 1 | AGRASET 101 |
| 13 | 56.218.16 | 1 | K92/4-2300-1.3/8" (6)ZV M= 1050Nm |
| 21 | 21.00.00 | 2 | |
| 22 | 63.27.00 | 2 | BM8x1 |
| 23 | 21.11.00 | 1 | RG 2300-Ov |
| 24 | 61.05.04 | 2 | Ø10x65 DIN 1481 |
| 25 | 75.11.16 | 1 | Ov-440 |
| 26 | 75.15.16 | 1 | L-425 |
| 27 | 21.12.00 | 1 | RG 2300-1 |
| 51 | 85.15.42 | 1 | n= 12 |
| 52 | 60.15.00 | 2 | 4x10 |
| 53 | 82.83.06 | 2 | |
| 54 | 85.15.36 | 1 | n= 6 |
| 55 | 82.36.03 | 1 | |
| 90 | 11.87.45 | 1 | AGRASET 207 |

| REF. | ONDERDEELNR. PART NUMBER REFERENCE TEILNUMMER | AANTAL QUANTITY QUANTITE ANZAHL | |
|------|--|--|--|
|------|--|--|--|

| | | 320 FC | 540+1000/min. |
|----|---------------|--------|---|
| 1 | 9.1154.0251.6 | 1 | W2300-SC15SW-660-K64/1R 1200Nm = REF. 11-91 |
| 4 | 85.135 | 1 | SDH15SW-A470-RP12-K |
| 5 | 85.134 | 1 | SDH15SW-J470-RP12-K |
| 11 | 21.10.00 | 1 | AG 2300-1.3/8" (6) |
| 12 | 33.91.07 | 1 | AGRASET 101 |
| 13 | 59.110.11 | 1 | K64/1R-2300-1.3/8" (6)ZV M= 1200Nm |
| 21 | 21.00.00 | 2 | |
| 22 | 63.27.00 | 2 | BM8x1 |
| 23 | 21.11.00 | 1 | RG 2300-Ov |
| 24 | 61.05.04 | 2 | Ø10x65 DIN 1481 |
| 25 | 75.11.16 | 1 | Ov-440 |
| 26 | 75.15.16 | 1 | L-425 |
| 27 | 21.12.00 | 1 | RG 2300-1 |
| 51 | 85.15.42 | 1 | n= 12 |
| 52 | 60.15.00 | 2 | 4x10 |
| 53 | 82.83.06 | 2 | |
| 54 | 85.15.42 | 1 | n= 5 |
| 55 | 82.36.03 | 1 | |
| 90 | 11.87.45 | 1 | AGRASET 207 |
| 91 | 16.61.181 | 1 | |



| SPLENDIMO | | type number type number numéro de type Typnummer | vanaf serienummer as from serial number après numéro de serie ab Seriennummer | SPLENDIMO | | type number type number numéro de type Typnummer | vanaf serienummer as from serial number après numéro de serie ab Seriennummer | |
|-----------|---------------|---|--|---------------|--------|---|--|--------------|
| 240 FC | A | 4.1232.0014.1 | 3000000 | 280 FC | C | 4.1227.0023.1 | 3000000 | |
| | A | 4.1232.0015.1 | 3003342 | | 320 FC | C | 4.1255.0000.1 | 10804 - 0511 |
| | A | 4.1232.0016.1 | 3000000 | | | C | 4.1255.0001.1 | 10805 - 0539 |
| | A | 4.1232.0017.1 | 3000589 | | | C | 4.1255.0002.1 | 10805 - 0520 |
| B | 4.1232.0018.1 | 3000000 | C | 4.1227.0004.1 | | 3000000 | | |
| 280 FC | B | 4.1227.0017.1 | 3001070 | | C | 4.1255.0005.1 | 3000000 | |
| | B | 4.1227.0018.1 | 3001080 | | C | 4.1255.0006.1 | 3000000 | |
| | B | 4.1227.0019.1 | 10805 - 0513 | | | | | |
| | B | 4.1227.0020.1 | 3000756 | | | | | |
| | B | 4.1227.0021.1 | 3000000 | | | | | |



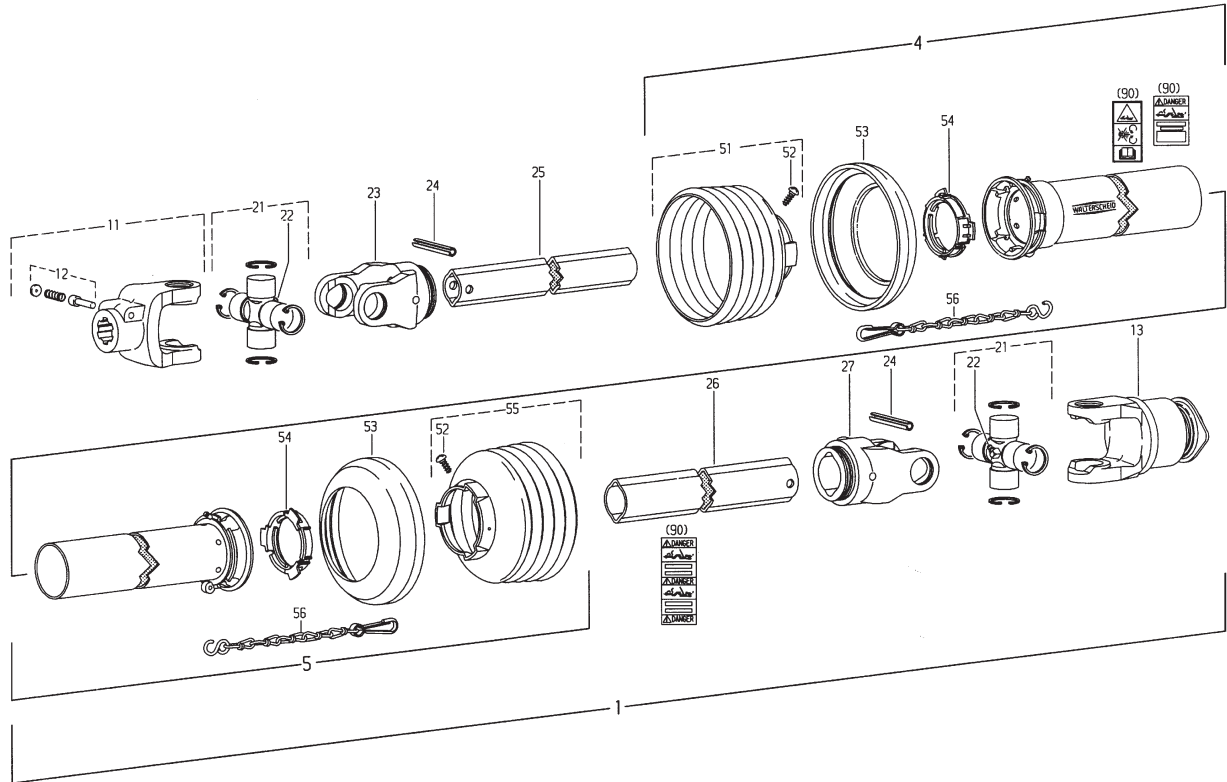
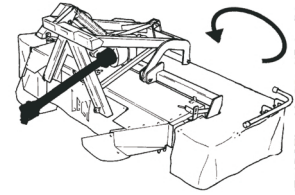
Ew001-07-01

| REF. | ONDERDEELNR. PART NUMBER REFERENCE TEILNUMMER | AANTAL QUANTITY QUANTITE ANZAHL | |
|------|--|--|---|
| 1 | A 9.1154.0132.6 | 1 | [x]W2300-SD15SW-860-F5/1L = REF. 11-90 1000/min. ⚡ |
| 4 | 85.135 | 1 | SDH15SW-A670-RP12-K |
| 5 | 85.134 | 1 | SDH15SW-J670-RP12-K |
| 11 | 21.10.00 | 1 | AG2300-1.3/8" (6) |
| 12 | 33.91.07 | 1 | AGRASET 101 |
| 13 | 56.143.40 | 1 | F5/1L-2300-1.3/8" (6)ZV |
| 21 | 21.00.00 | 2 | |
| 22 | 63.27.00 | 2 | BM8x1 |
| 23 | 21.11.00 | 1 | RG2300-0v |
| 24 | 61.05.04 | 2 | Ø10x65 DIN 1481 |
| 25 | 75.11.16 | 1 | 0vGA-740 |
| 26 | 75.16.16 | 1 | 1G-725 |
| 27 | 21.12.00 | 1 | RG2300-1 |
| 51 | 85.15.35 | 1 | n= 5 |
| 52 | 60.15.00 | 2 | 4x10 |
| 53 | 82.85.00 | 2 | |
| 54 | 82.83.06 | 2 | |
| 55 | 85.15.36 | 1 | n= 6 |
| 56 | 82.36.03 | 2 | |
| 90 | 11.87.45 | 1 | AGRASET 207 |

| REF. | ONDERDEELNR. PART NUMBER REFERENCE TEILNUMMER | AANTAL QUANTITY QUANTITE ANZAHL | |
|------|--|--|--|
| 1 | 9.1154.0215.5 | 1 | W2400-SD25SW-860-F5/1L = REF. 11-90 1000/min. ⚡ |
| B | | | |
| C | | | = REF. 11-90 540/min. ⚡ |
| 4 | 85.235 | 1 | SDH25SW-A645-RP12-K |
| 5 | 85.234 | 1 | SDH25SW-J645-RP12-K |
| 11 | 35.10.00 | 1 | AG2400-1.3/8" (6) |
| 12 | 33.91.07 | 1 | AGRASET 101 |
| 13 | 56.137.40 | 1 | F5/1L-2400-1.3/8" (6)ZV |
| 21 | 35.00.00 | 2 | |
| 22 | 63.27.00 | 2 | BM8x1 |
| 23 | 35.13.00 | 1 | RG2400-1b |
| 24 | 61.05.08 | 2 | Ø10x80 DIN 1481 |
| 25 | 75.25.95 | 1 | 1bGA-740 |
| 26 | 75.36.15 | 1 | 2aG-715 |
| 27 | 35.14.00 | 1 | RG2400-1 |
| 51 | 85.25.36 | 1 | n= 6 |
| 52 | 60.15.00 | 2 | 4x10 |
| 53 | 82.85.00 | 2 | |
| 54 | 82.83.04 | 2 | |
| 55 | 85.25.38 | 1 | n= 8 |
| 56 | 82.36.03 | 2 | |
| 90 | 11.87.45 | 1 | AGRASET 207 |

LELY

| SPLENDIMO | type number type number numéro de type Typnummer | vanaf serienummer as from serial number après numéro de série ab Seriennummer |
|-----------|---|--|
| 240 FC | 4.1232.0014.1 | 3000000 |
| | 4.1232.0015.1 | 3003242 |
| | 4.1232.0016.1 | 3000000 |
| | 4.1232.0017.1 | 3000589 |
| | 4.1232.0018.1 | 3000000 |



Ew001-08-01

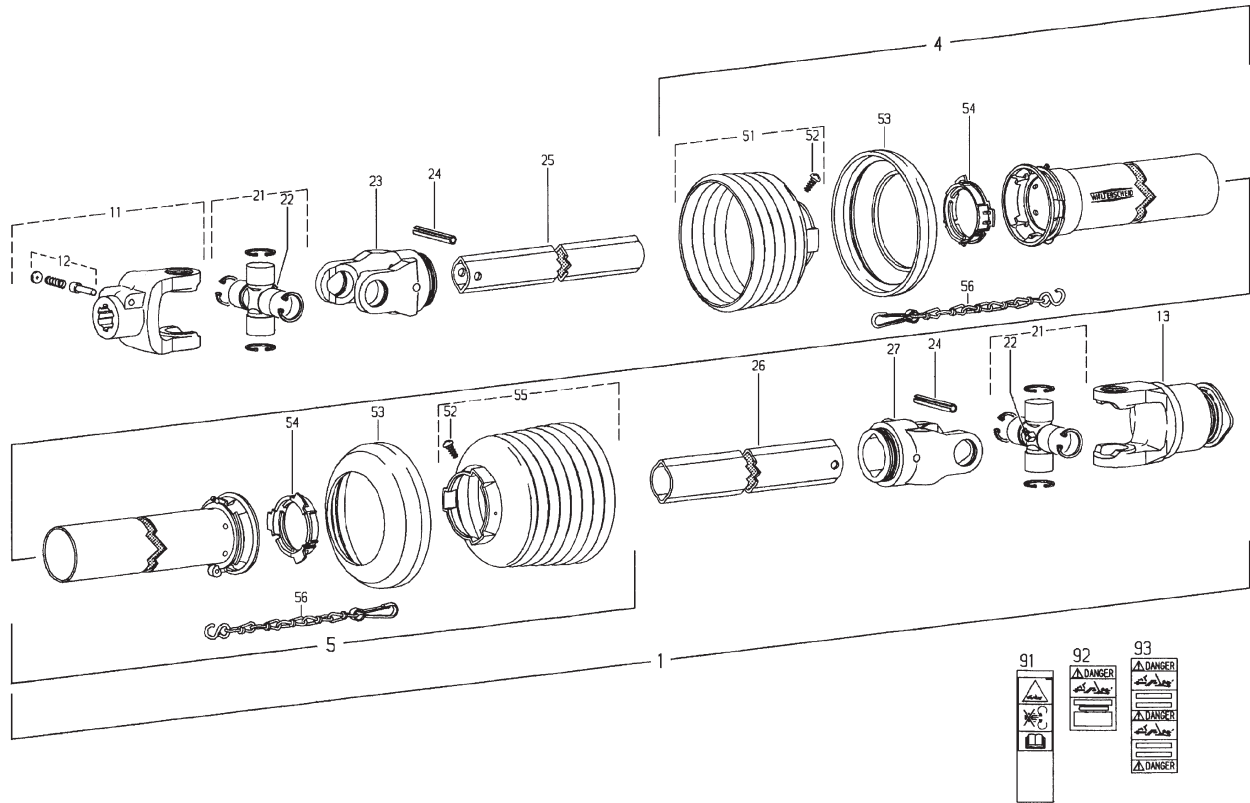
| REF. | ONDERDEELNR. PART NUMBER REFERENCE TEILNUMMER | AANTAL QUANTITY QUANTITE ANZAHL | |
|------|--|--|--|
|------|--|--|--|

| | | | |
|----|-----------------|-----|--|
| 1 | A 9.1154.0082.5 | (1) | W2300-SD15SW-860-F5/1R = REF. 11-90 1000/min. ⚡ |
| 4 | 85.135 | 1 | SDH15-A670-RP12-K |
| 5 | 85.134 | 1 | SDH15-J670-RP12-K |
| 11 | 21.10.00 | 1 | AG2300-1.3/8" (6) |
| 12 | 33.91.07 | 1 | AGRASET 101 |
| 13 | 56.141.40 | 1 | F5/1 R-2300-1.3/8" (6)ZV |
| 21 | 21.00.00 | 2 | |
| 22 | 63.27.00 | 2 | BM8x1 |
| 23 | 21.11.00 | 1 | RG2300-0v |
| 24 | 61.05.04 | 2 | Ø10x65 DIN 1481 |
| 25 | 75.11.96 | 1 | 0vGA-740 |
| 26 | 75.16.16 | 1 | 1G-725 |
| 27 | 21.12.00 | 1 | RG2300-1 |
| 51 | 85.15.35 | 1 | n= 5 |
| 52 | 60.15.00 | 2 | 4x10 |
| 53 | 82.85.00 | 2 | |
| 54 | 82.83.06 | 2 | |
| 55 | 85.15.36 | 1 | n= 6 |
| 56 | 82.36.03 | 2 | |
| 90 | 11.87.45 | 1 | AGRASET 207 |

| REF. | ONDERDEELNR. PART NUMBER REFERENCE TEILNUMMER | AANTAL QUANTITY QUANTITE ANZAHL | |
|------|--|--|--|
|------|--|--|--|

LELY

| SPLENDIMO | | type number type number número de type Typnummer | vanaf serienummer as from serial number après numéro de serie ab Seriennummer | SPLENDIMO | | type number type number numéro de type Typnummer | vanaf serienummer as from serial number après numéro de serie ab Seriennummer |
|-----------|-----|---|--|-----------|-----|---|--|
| 240 FC | B | 4.1232.0014.1 | 3000000 | 280 FC | B-C | 4.1227.0019.1 | 10805 - 0513 |
| | B | 4.1232.0015.1 | 3003242 | | B-C | 4.1227.0020.1 | 3000756 |
| | B | 4.1232.0016.1 | 3000000 | | B-C | 4.1227.0021.1 | 3000000 |
| | B | 4.1232.0017.1 | 3000589 | | B-C | 4.1227.0023.1 | 3000000 |
| 280 FC | B-C | 4.1227.0017.1 | 3001070 | 320 FC | C | 4.1255.0003.1 | 3003490 |
| | B-C | 4.1227.0018.1 | 3001080 | | C | 4.1255.0007.1 | 3000000 |

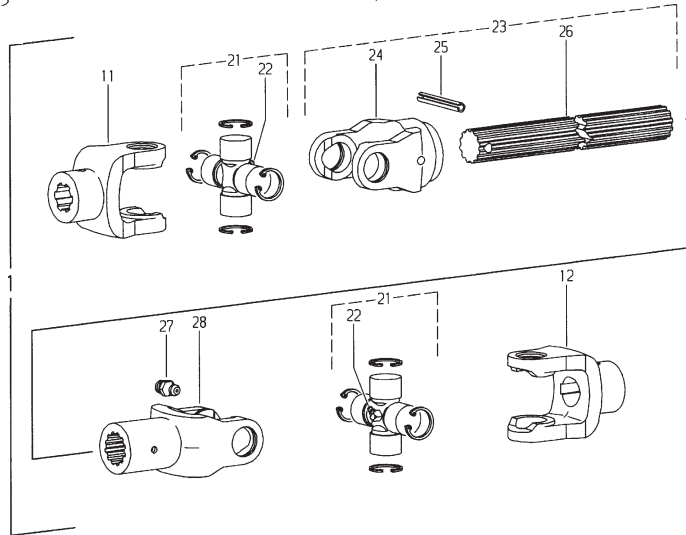
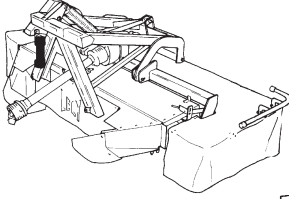


Ew001-06-02

| REF. | ONDERDEELNR. PART NUMBER REFERENCE TEILNUMMER | AANTAL QUANTITY QUANTITE ANZAHL | W2400-SD25SW-860-F5/1 R = REF. 11-93 540/min. ⚙️ = REF. 11-93 1000/min. ⚙️ |
|------|--|--|--|
| 1 | 9.1154.0209.6 | | |
| B | | (1) | |
| C | | (1) | |
| 4 | 85.235 | 1 | SDH25SW-A645-RP7-K |
| 5 | 85.234 | 1 | SDH25SW-J640-RP12-K |
| 11 | 35.10.00 | 1 | AG2400-1.3/8" (6) |
| 12 | 33.91.07 | 1 | AGRASET 101 |
| 13 | 56.144.40 | 1 | F5/1R-2400-1.3/8" (6) ZV |
| 21 | 35.00.00 | 2 | |
| 22 | 63.27.00 | 2 | BM8x1 |
| 23 | 35.13.00 | 1 | RG2400-1b |
| 24 | 61.05.08 | 2 | Ø10x80 DIN 1481 |
| 25 | 75.25.95 | 1 | 1bGA-740 |
| 26 | 75.36.15 | 1 | 2aG-715 |
| 27 | 35.14.00 | 1 | RG2400-2a |
| 51 | 85.25.36 | 1 | n= 6 |
| 52 | 60.15.00 | 2 | 4x10 |
| 53 | 82.85.00 | 2 | |
| 54 | 82.83.04 | 2 | |
| 55 | 85.25.38 | 1 | n= 8 |
| 56 | 82.36.03 | 2 | 400 |
| 91 | 16.61.175 | 1 | |
| 92 | 16.61.163 | 1 | |
| 93 | 16.61.162 | 1 | |

| REF. | ONDERDEELNR. PART NUMBER REFERENCE TEILNUMMER | AANTAL QUANTITY QUANTITE ANZAHL | |
|------|--|--|--|
| 91 | 16.61.175 | 1 | |
| 92 | 16.61.163 | 1 | |
| 93 | 16.61.162 | 1 | |

| LELY | | SPLENDIMO | type number type number numéro de type Typnummer | vanaf serienummer as from serial number après numéro de serie ab Seriennummer | SPLENDIMO | type number type number numéro de type Typnummer | vanaf serienummer as from serial number après numéro de serie ab Seriennummer |
|------|--------|-----------|--|--|------------------|--|---|
| | 240 FC | | 4.1232.0014.1 4.1232.0015.1 4.1232.0016.1 4.1232.0017.1 4.1232.0018.1 4.1227.0017.1 | 3000000 3003242 3000000 3000589 3000000 3001070 | | 4.1227.0023.1 | 3000000 |
| | 280 FC | | 4.1227.0018.1 4.1227.0019.1 4.1227.0020.1 4.1227.0021.1 | 10805 - 0513 300756 3000000 | 280 FC 320 FC | 4.1255.0000.1 4.1255.0001.1 4.1255.0002.1 4.1227.0003.1 4.1255.0004.1 4.1255.0005.1 4.1255.0006.1 4.1255.0007.1 | 10804 - 0511 10805 - 0539 10805 - 0520 3003496 3000000 3000000 3000000 3000000 |



Ew009-01-01

| REF. | ONDERDEELNR. PART NUMBER REFERENCE TEILNUMMER | AANTAL QUANTITY QUANTITE ANZAHL | |
|------|--|--|--|
|------|--|--|--|

| | | | |
|----|---------------|---|-------------------------|
| 1 | 4.1227.0219.0 | 1 | W3100-260 = REF. 11-28 |
| 11 | 10.22.368 | 1 | NG2100 1.3/8" (6) |
| 12 | 10.40.110 | 1 | NG2100 Ø35 |
| 21 | 10.01.02 | 2 | 2100 "S" |
| 22 | 63.27.00 | 2 | BM8x1 |
| 23 | 10.48.113 | 1 | WELG2100-25x22(14)H-24I |
| 24 | 10.48.108 | 1 | RG2100-25x22 (14) |
| 25 | 9.1070.0022.1 | 1 | Ø8x45 DIN 1481 |
| 26 | 67.70.02 | 1 | 25x22(14) H-205 |
| 27 | 63.13.02 | 1 | A 1/4 UNF |
| 28 | 10.25.00 | 1 | NG2100-25x22 (14) |

| REF. | ONDERDEELNR. PART NUMBER REFERENCE TEILNUMMER | AANTAL QUANTITY QUANTITE ANZAHL | |
|------|--|--|--|
|------|--|--|--|