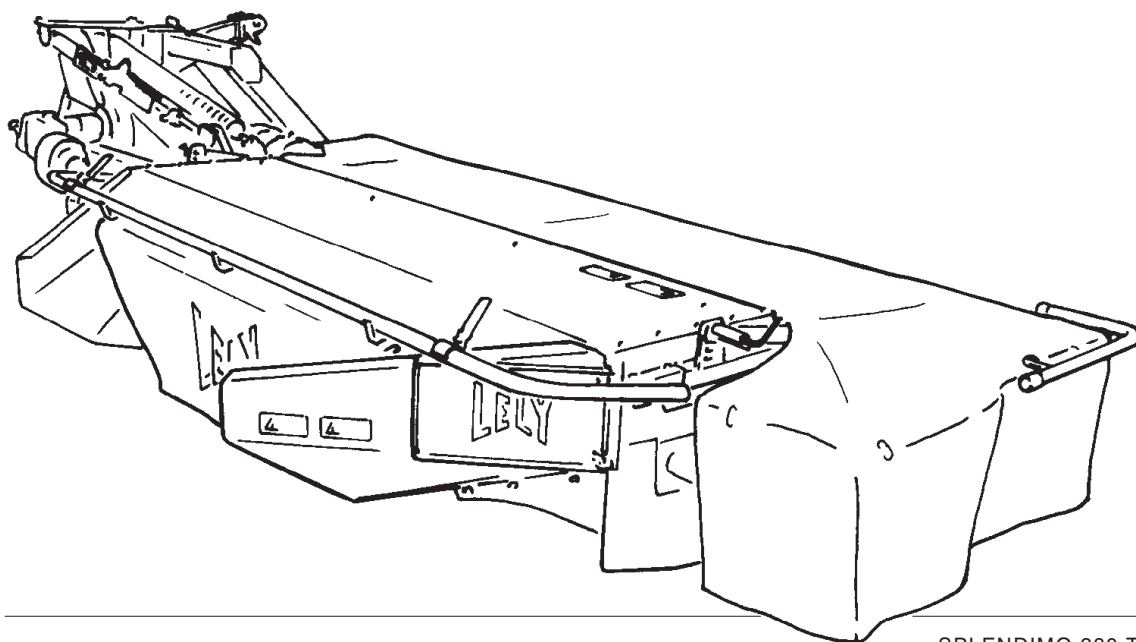


LELY

HIGH - TECH
IN AGRICULTURE

ONDERDELENLIJST PARTS LIST LISTE DE PIECES DE RECHANGE ERSATZTEILLISTE

SPLENDIMO TC



SPLENDIMO 280 TC

SPLENDIMO	type number type number numéro de type Typennummer	vanaf serienummer as from serial number après numéro série ab Seriennummer	SPLENDIMO	type number type number numéro de type Typennummer	vanaf serienummer as from serial number après numéro série ab Seriennummer
240TC	4.1224.0017.1 4.1224.0018.1 4.1224.0019.1 4.1224.0020.1 4.1224.0040.1	3002225 10702 - 0520 10806 - 0537 3000000 3000768	280 TC	4.1220.0021.1 4.1220.0022.1 4.1220.0023.1 4.1220.0024.1 4.1220.9000.1	10807 - 0501 10805 - 0597 10803 - 0532 3000000 3000761



ONDERDELEN

Bij het bestellen van onderdelen is het belangrijk dat u het type- en serienummer van uw machine opgeeft. Gebruik alleen originele LELY-onderdelen.

SPARE PARTS

When ordering spare parts, it is important that you indicate the type and serial number of your machine. Use only genuine LELY parts.

PIECES DE RECHANGE

En commandant des pièces de rechange il importe que vous indiquiez les numéros de type et de série de votre machine. N'utiliser que des pièces d'origines LELY.

ERSATZTEILE

Beim Bestellen von Ersatzteilen ist es wichtig, daß Sie die Typ- und Seriennummer Ihrer Maschine angeben. Nur Original-LELY-Ersatzteile verwenden.

Typ- und Seriennummer in nebenstehende Abbildung eintragen. Bei künftigen Bestellungen haben Sie die Nummer dann griffbereit.

Vul het type- en serienummer hieronder in. Bij toekomstige onderdelenbestellingen heeft u de nummers dan bij de hand.

Complete the box below with the type and serial number.

This is an easy reference with a view to future spare parts ordering.

Veillez noter, ci-dessous, les numéros de type et de serie.

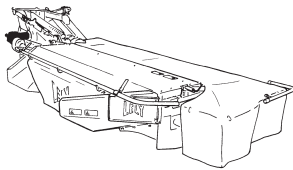
Ceci est important pour toutes commandes de pièces de rechange.

LELY		LELY INDUSTRIES NV 3147 PA MAASSLUIS THE NETHERLANDS		CE	
		kg			
Type					
Ser.Nr.					

Verklaring van de in de onderdelenlijst gebruikte tekens.
Explanation of signs used in the parts list.
Explication des signes qui figurent dans la liste des pièces.
Erklärung der in der Ersatzteilliste verwendeten Zeichen.

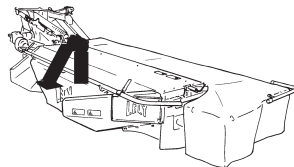
[R]	= RECHTSE UITVOERING RH VERSION	VERSION DROITE RECHTE AUSFÜHRUNG		
[L]	= LINKSE UITVOERING LH VERSION Onder rechtse of linkse uitvoering wordt de plaats van het onderdeel verstaan, gezien van de achterzijde van de machine. By RH or LH version the position of the part is meant, seen from the rear of the machine	VERSION GAUCHE LINKE AUSFÜHRUNG Par version droite ou gauche on entend la position de la pièce, vue de l'arrière de la machine. Die Verweisungen "rechte Ausführung" oder "linke Ausführung" geben die Position des Teils, von der Hinterseite der Maschine aus gesehen, an.		
[RD]	= RECHTSOM DRAAIENDE UITVOERING RH ROTATING VERSION	VERSION ROTATION A DROITE RECHTSUMDREHENDE AUSFÜHRUNG		
[LD]	= LINKSOM DRAAIENDE UITVOERING LH ROTATING VERSION Onder rechtsom of linksom draaiende uitvoering wordt de draairichting van het onderdeel verstaan, gezien van de bovenzijde van de machine. By RH or LH rotating version the sense of rotating of the part is meant, seen from the top of the machine.	VERSION ROTATION A GAUCHE LINKSUMDREHENDE AUSFÜHRUNG Version rotation à droit: ceci correspond au sens de rotation de la pièce, vue du dessus la machine. Mit diesen Verweisungen wird die Drehrichtung des Teils von der Oberseite der Maschine aus gesehen, angegeben.		
[x]	= ONDERDEEL WORDT NIET GETOOND PART IS NOT SHOWN Bijvoorbeeld linkse uitvoering overeenkomstig de wel getekende rechtse uitvoering. E.g. : LH version is similar to the RH version, which is actually shown.	PIECE N'EST PAS MONTREE TEIL WIRD NICHT GEZEIGT Exemple : la version gauche est représentée. La version droite correspond à la version gauche, mais n'est pas représentée. Beispiel : die linke Ausführung entspricht der effektiv gezeigten Rechten.		
[#]	= NIET LOS LEVERBAAR NOT AVAILABLE SEPARATELY	VENDU EN KIT UNIQUEMENT NICHT SEPARAT LIEFERBAR		
~	= AANTAL (INDIEN NODIG) AFHANKELIJK VAN INBOUWMAAT QUANTITY (IF APPLICABLE) DEPENDING UPON ASSEMBLY	QUANTITE (SI NÉCESSAIRE) EN FONCTION DU MONTAGE ANZAHL VOM EINBAUMASS ABHÄNGIG (WENN ERFORDERLICH)		
[—]	= SLUITRING	WASHER	RONDELLE PLATE	UNTERLEGSCHEIBE
[—/—]	= VEERRING	SPRING WASHER	RONDELLE GROWER	FEDERRING
[###]	= TANDVEERRING	SHAKE-PROOF WASHER	RONDELLE EVENTAIL	RÄNDELFEDEERING
[> <]	= OLIEKEERRING	OIL SEAL	ETANCHEITE	ÖLDICHTUNGSRING
[T+T]	= TANDWIELSET	PAIR OF GEARS	JEU D'ENGRENAGES	ZAHNRÄDERSATZ
[D+D]	= VULRINGSET	SHIM SET	JEU D'ÉPAISSEURS	PASSSCHEIBENSATZ
[A+A]	= SET AFDICHTINGSRINGEN	SET OF SEALING RINGS	JEU D'ANNEAUX D'ETANCHEITE	DICHTUNGSRINGENSATZ

SPLENDIMO TC



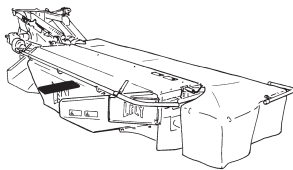
Tandwielkast
Gearbox
Boîte d'engrenages
Getriebe

01



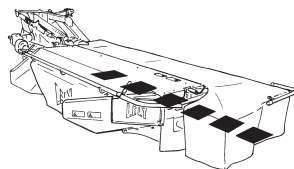
Aandrijving eerste maaielement
Drive of first cutting unit
Entraînement première unité de fauchage
Antrieb der ersten Mäh-Einheit

02



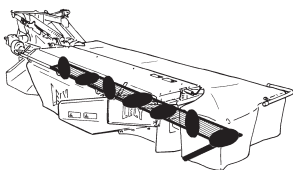
Eerste maaielement
First cutting unit
Première unité de fauchage
Erste Mäh-Einheit

03



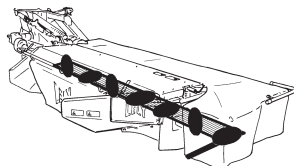
Maaielementen
Cutting units
Unités de fauchage
Mäh-Einheiten

04



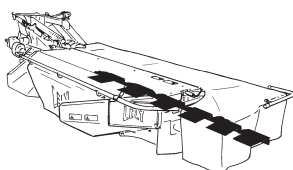
Maaibalk + slijtsloffen
Cutter bar + wear skids
Barre de coupe + patins d'usure
Mähbalken + Verschleißkufen

05-06



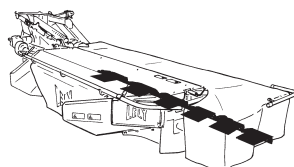
Maaibalk + slijtsloffen
Cutter bar + wear skids
Barre de coupe + patins d'usure
Mähbalken + Verschleißkufen

07



Slijtsloffen + Slijtplaten
Wear skids + wear plates
Patins d'usure + plaques d'usure
Verschleißkufen + Verschleißplatten

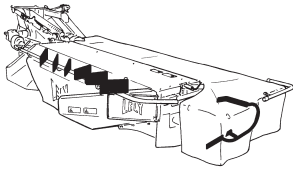
08



Maaibalkbescherming + glijtsloffen
Cutter bar protection + skids
Protection-barre + patins
Mähwerkschutz + Kufen

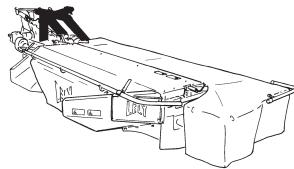
09

SPLENDIMO TC



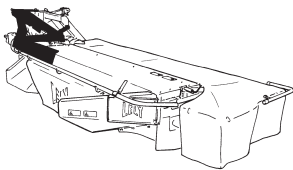
Gewasscheider + spreidplaten
Crop driver + Spreading fins
Diviseur de végétation + Volets éparpilleurs
Erntetrenner + Breitverteiler

10



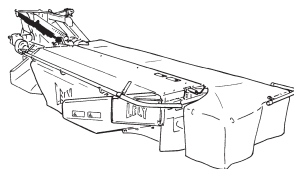
Driepuntsbok
Headstock
Tête d'attelage
Dreipunkturm

11



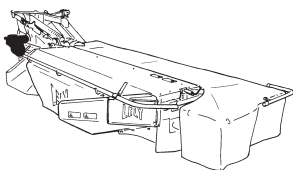
Freem + uitslagbeveiliging
Frame + anti-shock device
Châssis + dispositif anti-choc
Rahmen + Ausklinkvorrichtung

12



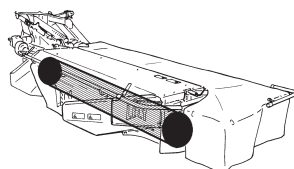
Hydraulische cilinder
Hydraulic ram
Vérin hydraulique
Hydraulikzylinder

13



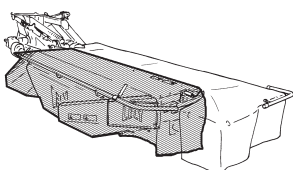
Kneuzer-tandwielkast
Conditioner gearbox
Boîte de vitesses de conditionneuse
Aufbereitergetriebe

14



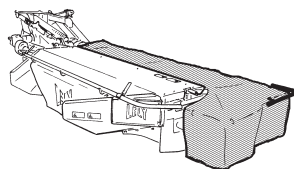
Rotor
Rotor
Rotor
Rotor

15



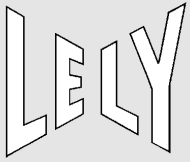
Kneuzerkap
Conditioner hood
Capot conditionneuse
Aufbereiterhaube

16-17



Kneuzerfreem
Conditioner frame
Châssis de conditionneuse
Aufbereiterahmen

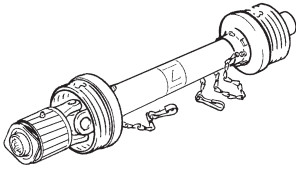
18-19



**Inhoud
Contents
Index
Inhalt**

SPLENDIMO TC

**pagina
page
page
Seite**



Koppelingsassen
PTO shafts
Arbres de transmission
Gelenkwellen

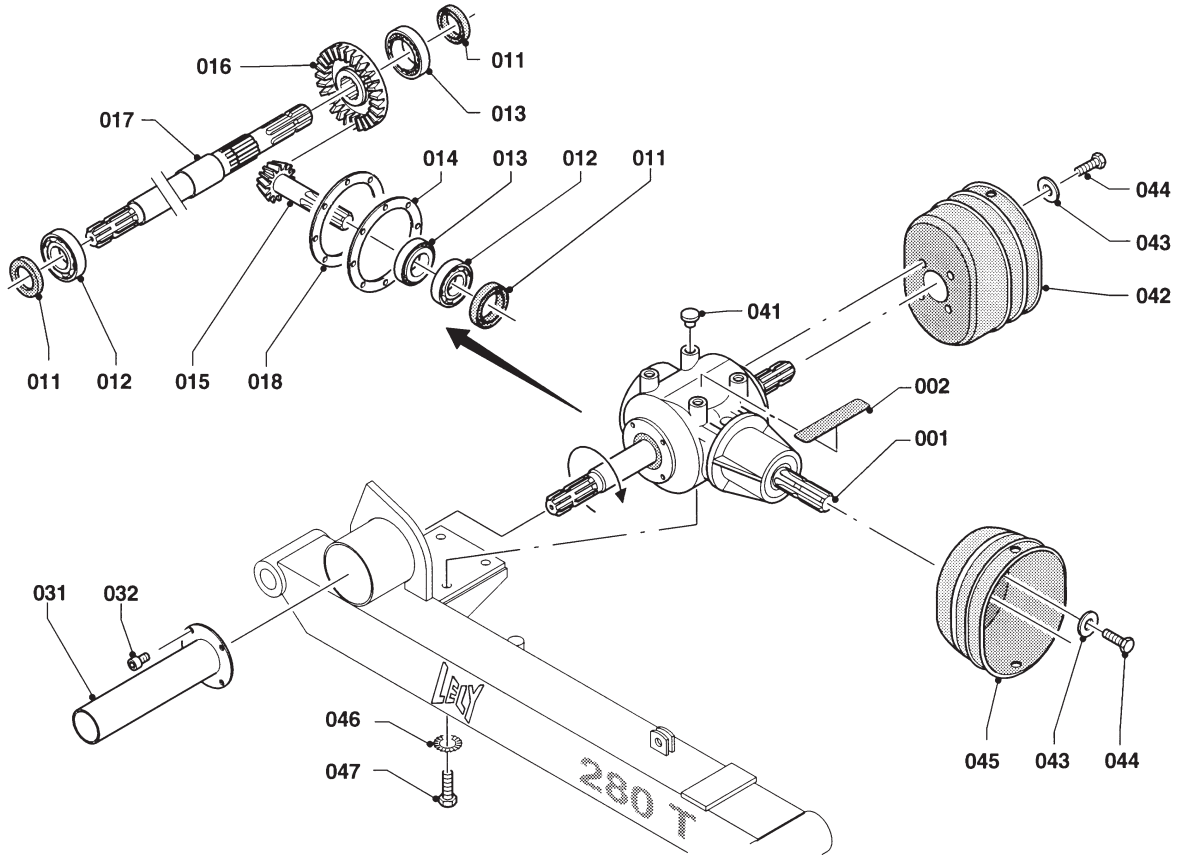
20-22

LELY

TC/b

01

SPLENDIMO	type number type number numéro de type Typnummer	vanaf serienummer as from serial number après numéro de serie ab Seriennummer	SPLENDIMO	type number type number numéro de type Typnummer	vanaf serienummer as from serial number après numéro de serie ab Seriennummer
240 TC	4.1224.0017.1	3002225	280 TC	4.1220.0021.1	10807 - 0501
	4.1224.0018.1	10702 - 0520		4.1220.0022.1	10805 - 0597
	4.1224.0019.1	10806 - 0537		4.1220.0023.1	10803 - 0532
	4.1224.0020.1	30000000		4.1220.0024.1	3000000
	4.1224.0040.1	3000768		4.1220.9000.2	3000761



E096-04-21

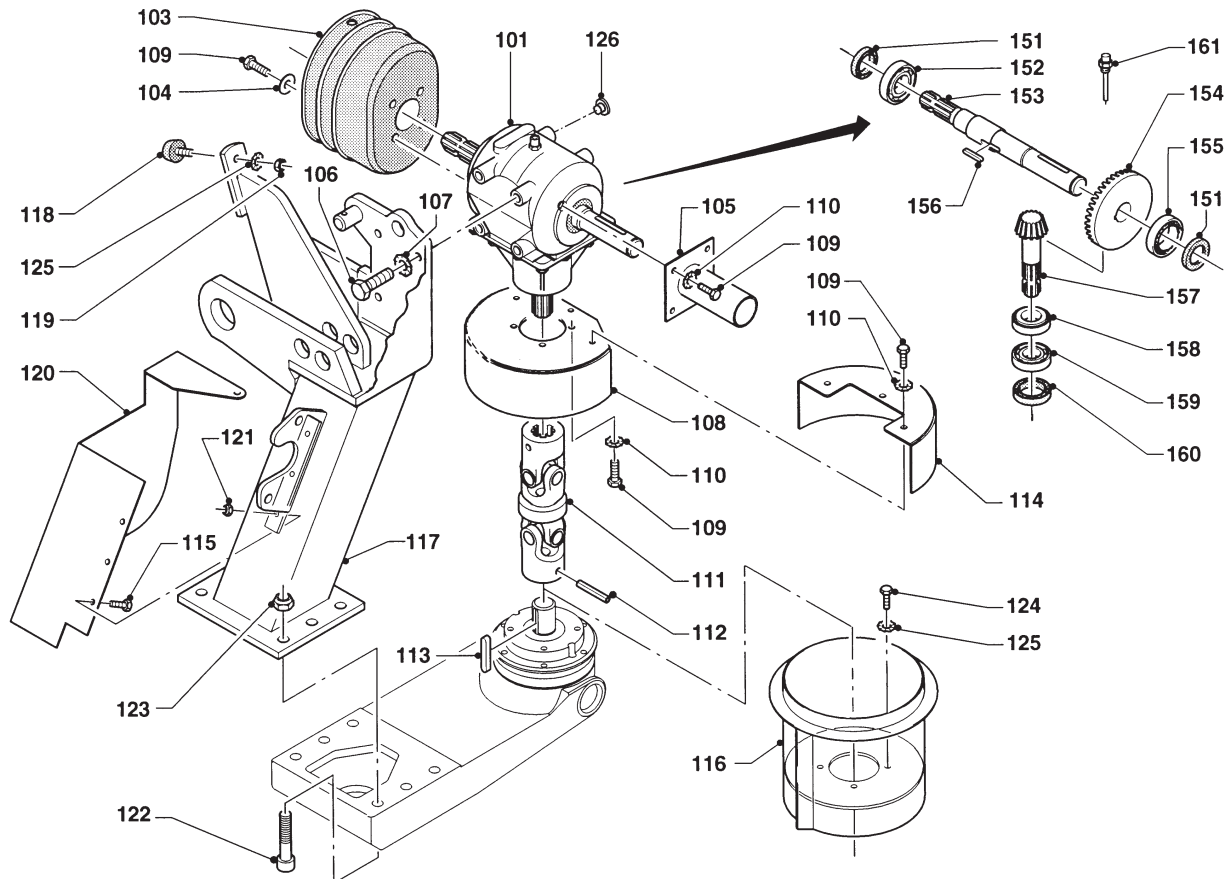
REF.	ONDERDEELNR. PART NUMBER REFERENCE TEILNUMMER	AANTAL QUANTITY QUANTITE ANZAHL	
------	--	--	--

001	9.1083.0017.4 9.1171.0042.4	1 (1,5 L)	1:1,92 1L GX 85W-140
002	9.1170.0125.4	1	"MAX. 540/min."
011	9.1042.0082.5	(3)	40x80x10 CB
012	9.1001.0027.5	(2)	6208
013	9.1002.0016.0	(2)	30208
014	9.1083.0019.6	(1)	
015	-	(1)	
016	-	(1)	
017	9.1083.0018.5	(1)	
018	9.1093.0044.0	(5)	63x80x0,2 DIN 988
031	4.1231.0230.0	1	
032	9.1057.0069.5	4	M8x12 DIN 912-A2-2
041	9.1108.0058.0	4	Ø14,6x5,5
042	4.1220.1990.0	1	
043	9.1048.0005*6	8	A8,4 DIN 9021
044	9.1113.0013*5	8	M8x16 DIN 933-8.8
045	4.1220.1988.0	1	
046	9.1051.0004.2	4	A16,5 DIN 6798
047	9.1113.0076*5	4	M16x30 DIN 933-8.8

REF.	ONDERDEELNR. PART NUMBER REFERENCE TEILNUMMER	AANTAL QUANTITY QUANTITE ANZAHL	
------	--	--	--

LELY

SPLENDIMO	type nummer type number numéro de type Typnummer	vanaf serienummer as from serial number après numéro de serie ab Seriennummer	SPLENDIMO	type nummer type number numéro de type Typnummer	vanaf serienummer as from serial number après numéro de serie ab Seriennummer
240 TC	4.1224.0017.1	3002225	280 TC	4.1220.0021.1	10807 - 0501
	4.1224.0018.1	10702 - 0520		4.1220.0022.1	10805 - 0597
	4.1224.0019.1	10806 - 0537		4.1220.0023.1	10803 - 0532
	4.1224.0020.1	30000000		4.1220.0024.1	3000000
	A 4.1224.0040.1	3000768		A 4.1220.9000.2	3000761



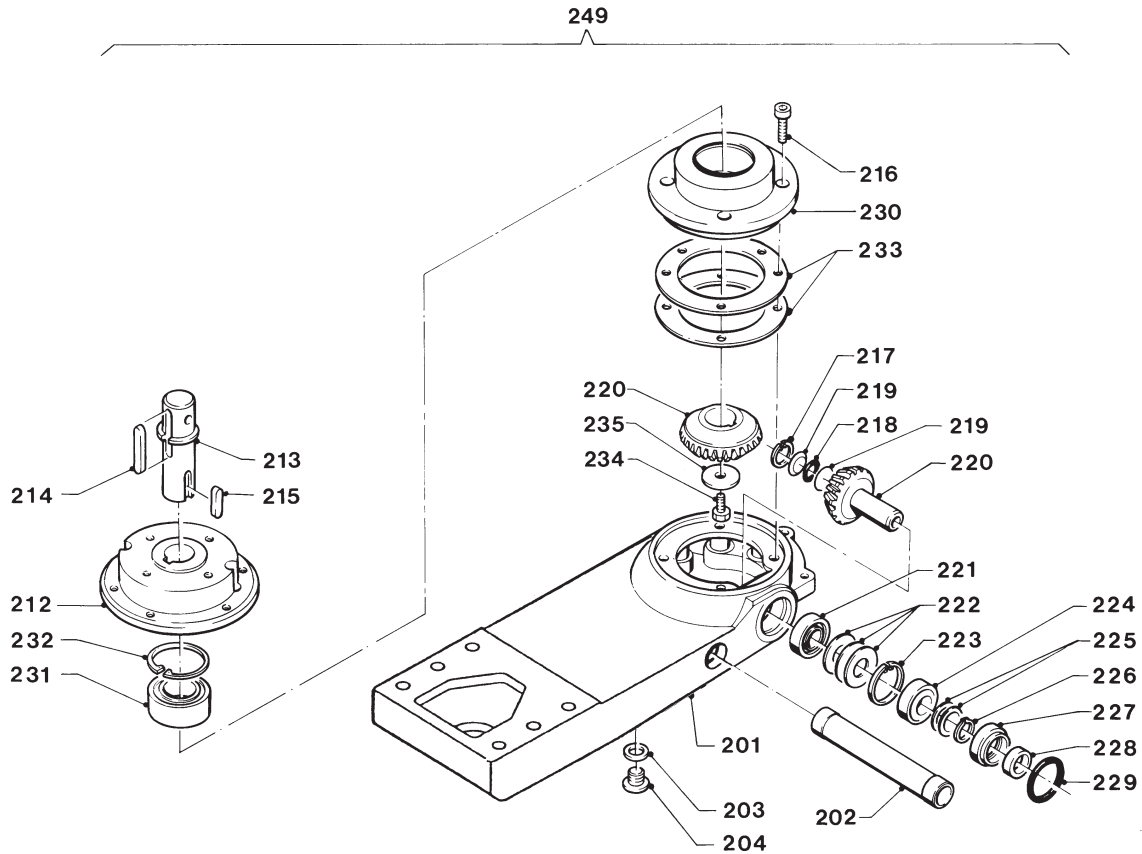
E095-05-11

REF.	ONDERDEELNR. PART NUMBER REFERENCE TEILNUMMER	AANTAL QUANTITY QUANTITE ANZAHL	
101	9.1083.0009.3 9.1171.0042.4	1 (0,85 L)	T 304A (1:3) 1L GX 85W-140
103	4.1220.1969.0	1	
104	9.1048.0005*6	4	A8,4 DIN 9021 [—]
105	4.1227.0500.0	1	
106	9.1113.0125*5	4	M12x35 DIN 933-8.8
107	9.1051.0003.1	4	A12,5 DIN 6798 [#####]
108	4.1220.0880.0	1	
109	9.1113.0013*5	13	M8x16 DIN 933-8.8
110	9.1051.0001.6	9	A8,2 DIN 6798 [#####]
111	4.1220.0770.0	1	
112	9.1070.0028.0	1	Ø10x60 DIN 1481
113	9.1071.0053.3	(1)	= REF. 214
114	4.1220.0900.0	1	
115	9.1113.0014*6	3	M8x20 DIN 933-8.8
116	4.1256.0440.0	1	
117	4.1220.0782.0 A 4.1220.1630.0	1 1	[x]
118	9.1105.0004.4	1	M10 50x68
119	9.1029.0005*4	1	M10 DIN 934-8
120	4.1220.1989.0	1	
121	9.1030.0012*3	3	M8 DIN 985-8
122	9.1057.0056.6	6	M16x80 DIN 912-12.9
123	9.1030.0014*5	6	M16 DIN 985-8
124	9.1113.0026*4	4	M10x16 DIN 933-8.8
125	9.1051.0002.0	5	A10,5 DIN 6798 [#####]
126	9.1108.0036.6	4	

REF.	ONDERDEELNR. PART NUMBER REFERENCE TEILNUMMER	AANTAL QUANTITY QUANTITE ANZAHL	
151	-	(2)	40x62x7 [» «]
152	9.1001.0027.5	(1)	6208
153	-	(1)	
154	-	(1)	
155	9.1002.0016.0	(1)	30208
156	9.1071.0049.6	(1)	B12x8x30
157	-	(1)	
158	9.1002.0006.4	(1)	32207
159	-	(1)	6207
160	-	(1)	A35x72x8 [» «]
161	9.1150.0016.6	(1)	3/8"

LELY

SPLENDIMO	type nummer type number numéro de type Typnummer	vanaf serienummer as from serial number après numéro de serie ab Seriennummer	SPLENDIMO	type nummer type number numéro de type Typnummer	vanaf serienummer as from serial number après numéro de serie ab Seriennummer
240 TC	4.1224.0017.1	3002225	280 TC	4.1220.0021.1	10807 - 0501
	4.1224.0018.1	10702 - 0520		4.1220.0022.1	10805 - 0597
	4.1224.0019.1	10806 - 0537		4.1220.0023.1	10803 - 0532
	4.1224.0020.1	30000000		4.1220.0024.1	3000000
	4.1224.0040.1	3000768		4.1220.9000.2	3000761



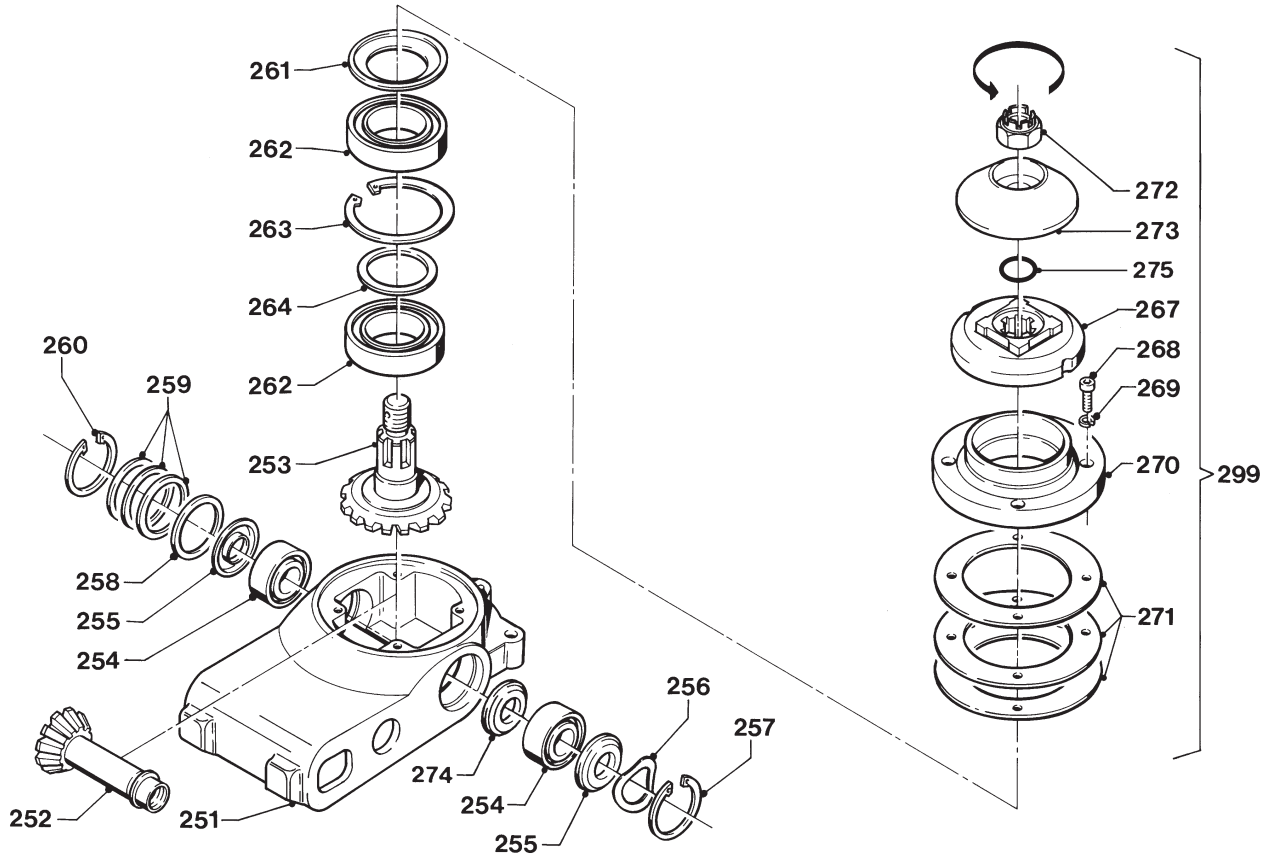
E071-04-12

REF.	ONDERDEELNR. PART NUMBER REFERENCE TEILNUMMER	AANTAL QUANTITY QUANTITE ANZAHL		
201	4.1220.0774.0 9.1171.0042.4	1 (0,45 L)	1L GX 85W-140	
202	4.1220.0123.0	1		
203	9.1137.0400.4	1	Ø17x24x1,5 Cu	[—]
204	9.1131.0010.5	1	R3/8"	
212	4.1220.0771.0	1		
213	4.1220.0769.0	1		
214	9.1071.0053.3	1	B10x8x63 DIN 6885 = REF. 113	
215	9.1071.0051.1	1	B10x8x25 DIN 6885	
216	9.1057.0010.2	4	M10x25 DIN 912-12.9	
217	9.1120.0030.1	1	20x1,00 DIN 472	
218	9.1043.0036.0	1	OR Ø16x2	
219	4.1211.0432.0	2		
220	4.1220.0092.1	1+1		[T+T]
221	9.1002.0033.3	1	32205 B	
222	2.3222.0022.0	1		[D+D]
223	9.1120.0003.2	1	52x2,00 DIN 472	
224	9.1002.0024.1	1	30205	
225	4.1211.0412.0	1		[D+D]
226	9.1119.0022.1	1	25x2-06 DIN 471	
227	4.1211.0430.0	1		
228	9.1042.0058.2 9.1171.0050.5	1 (0,02 kg)	25x42x7 CB 0,4 kg Unirex N3 ESSO	[> <]

REF.	ONDERDEELNR. PART NUMBER REFERENCE TEILNUMMER	AANTAL QUANTITY QUANTITE ANZAHL		
229	9.1043.0038.2	1	OR Ø52x2	
230	4.1220.0772.0	1		
231	9.1005.1002.4	1	BA2B 446762B	
232	9.1120.0009.1	1	72x2,50 DIN 472	
233	4.1227.0248.0	1		[D+D]
234	9.1113.0147*6	1	M12x30 DIN 933-10.9	
235	4.1220.0768.0	1		
249	4.1220.0741.0	1	= REF. 201-235	

LELY

SPLENDIMO	type nummer type number numéro de type Typnummer	vanaf serienummer as from serial number après numéro de serie ab Seriennummer	SPLENDIMO	type nummer type number numéro de type Typnummer	vanaf serienummer as from serial number après numéro de serie ab Seriennummer
240 TC	4.1224.0017.1	3002225	280 TC	4.1220.0021.1	10807 - 0501
	4.1224.0018.1	10702 - 0520		4.1220.0022.1	10805 - 0597
	4.1224.0019.1	10806 - 0537		4.1220.0023.1	10803 - 0532
	4.1224.0020.1	30000000		4.1220.0024.1	3000000
	4.1224.0040.1	3000768		4.1220.9000.2	3000761



E063-04-14

REF.	ONDERDEELNR. PART NUMBER REFERENCE TEILNUMMER	AANTAL QUANTITY QUANTITE ANZAHL	
------	--	--	--

251	4.1220.0287.0	1	
	9.1171.0038.0	1	0,095 kg ALVANIA WR-0 SHELL
	9.1171.0039.1	(0,095 kg)	1 kg ALVANIA WR-0 SHELL
	9.1171.0040.2	(0,095 kg)	5 kg ALVANIA WR-0 SHELL
	9.1171.0041.3	(0,095 kg)	10 kg ALVANIA WR-0 SHELL

252	4.1220.0288.0	1	
253	4.1220.0289.0	1	
254	9.1001.0064.0	2	6005 2RS1-C4
255	9.1107.0007.5	2	6005 ZJV
256	9.1049.0013.6	1	46,5x40-G 6005
257	9.1120.0027.5	1	47x1,75 V
258	4.1201.0061.0	1	
259	4.1220.0078.0	(1)	[D+D]
260	9.1120.0002.1	1	47x1,75 DIN 472
261	9.1107.0008.6	1	6009 ZAV
262	9.1001.0065.1	2	6009 2RS1-C5L
263	9.1120.0026.4	1	75x3,00 DIN 472
264	9.1052.0004.1	1	45x55x3 DIN 988

267	4.1225.0189.0	1	
268	9.1057.0089.4	4	M8x25 DIN 912-12.9
269	9.1121.0024*1	4	8 DIN 7980 [-/]
270	4.1220.0061.0	1	
271	4.1220.0079.0	(1)	[D+D]

272	9.1031.0014.4	1	M22x1,5 DIN 937-22H = REF. 303/403
-----	---------------	---	---------------------------------------

273	4.1220.1467.0	1	= REF. 302/402
274	9.1107.0014.5	1	6005 ZAV

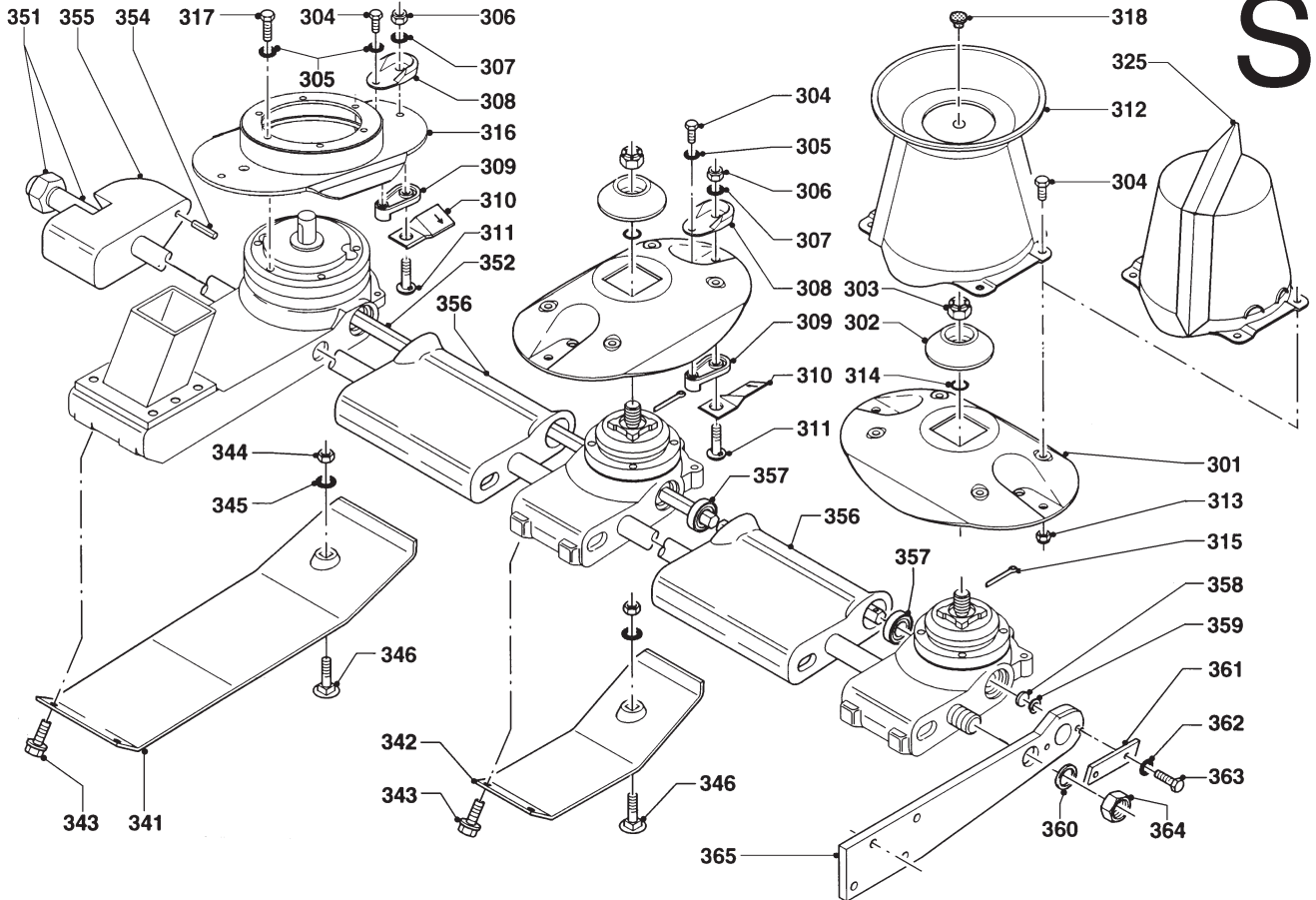
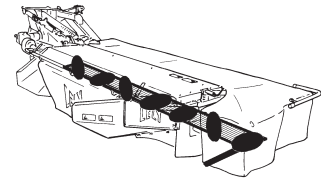
275	9.1043.0061.4	1	OR Ø23x2 = REF. 314/414
-----	---------------	---	-------------------------

REF.	ONDERDEELNR. PART NUMBER REFERENCE TEILNUMMER	AANTAL QUANTITY QUANTITE ANZAHL	
------	--	--	--

			240 280
299	4.1220.0270.1	3 3	= REF. 251-275 [LD]
	4.1220.0290.1	2 3	= REF. 251-275 [RD][x]

LELY

SPLENDIMO	type number type number numéro de type Typnummer	vanaf serienummer as from serial number après numéro de serie ab Seriennummer
240 TC	4.1224.0017.1	3002225
A	4.1224.0040.1	3000768
280 TC	4.1220.0022.1	10805 - 0597



E064-05-01

REF.	ONDERDEELNR. PART NUMBER REFERENCE TEILNUMMER	AANTAL QUANTITY QUANTITE ANZAHL	240	280
------	--	--	-----	-----

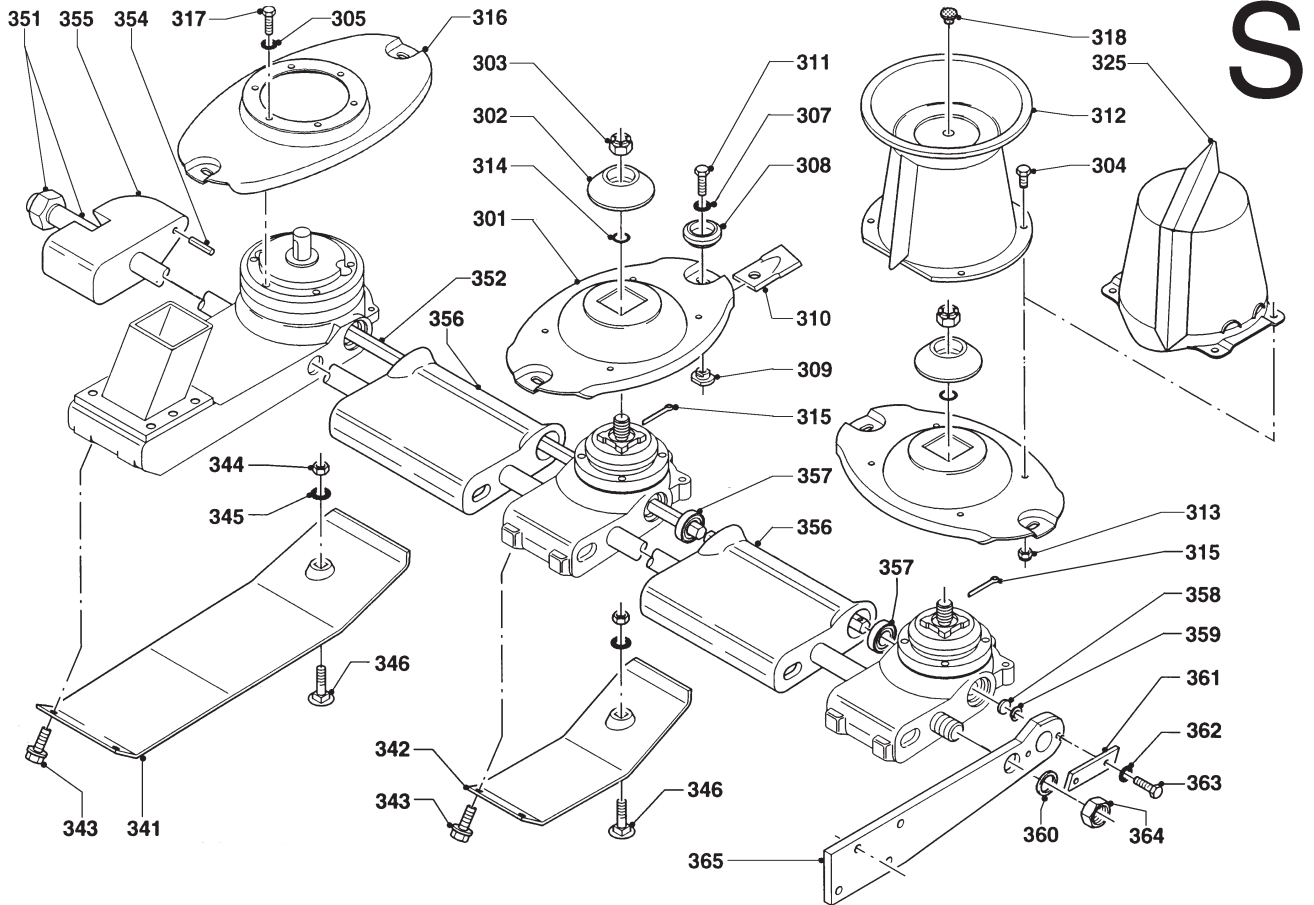
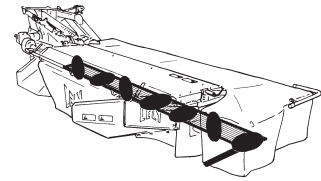
301	4.1225.1489.0	5	6	
302	4.1220.1467.0	5	6	= REF. 273
303	9.1031.0014.4	5	6	M22x1,5 DIN937-22H = REF. 272
304	9.1113.0341*3	16	18	M8x20 DIN 933-10.9
305	9.1051.0001.6	18	20	A8,2 DIN 6798
306	9.1030.0018*2	12	14	M10 DIN 985-10
307	9.1051.0002.0	12	14	A10,5 DIN 6798
308	4.1225.0449.0	12	14	
309	4.1201.0142.0	12	14	
310	4.1220.1996.0	6	8	[RD] L= 100
	4.1220.1995.0	6	6	[LD] L= 100
311	4.1201.0141*0	12	14	M10x32 DIN 267-12.9
312	4.1225.0480.0	1	1	
313	9.1030.0040*3	4	4	M8 DIN 985-10
314	9.1043.0061.4	5	6	OR Ø23x2 = REF. 275
315	9.1072.0030.0	5	6	3,2x36 DIN 94
316	4.1258.0680.0	1	1	
317	9.1113.0013*5	6	6	M8x16 DIN 933-8.8
318	9.1108.0063.5	1	1	Ø9,3
325	A 4.1225.0640.0	(1)	-	

REF.	ONDERDEELNR. PART NUMBER REFERENCE TEILNUMMER	AANTAL QUANTITY QUANTITE ANZAHL	240	280	
------	--	--	-----	-----	--

341	4.1220.1953.0	1	1	Slijtslof Wear skid Patin d'usure Verschleißkufe	6mm
342	4.1220.1962.0	5	6	Slijtslofften Wear skids Patin d'usure Verschleißkufen	4mm
343	9.1114.0009*0	12	14	M10x30 8.8	
344	9.1029.0005*4	6	7	M10 DIN 934-8	
345	9.1051.0002.0	6	7	A10,5 DIN 6798	[####]
346	9.1058.0015*6	6	7	M10x35 DIN 603-8.8	
351	4.1224.0110.0	1	-		
	4.1220.0040.0	-	1	[x]	
352	4.1224.0129.0	1	-		
	4.1220.0039.0	-	1	[x]	
354	9.1070.0026.5	1	1	Ø10x40 DIN 1481	
355	4.1220.0728.0	1	1	L= 110	
356	4.1220.0033.0	5	6		
357	4.1201.0145.0	9	11		
358	4.1201.0329.0	1	1	L= 5	
359	9.1120.0028.6	1	1	18x1,00 DIN 472	
360	9.1052.0011*1	1	1	S30x42x2,5 DIN 988	[]
361	4.1220.0034.0	1	1		
362	9.1051.0002.0	2	2	A10,5 DIN 6798	[####]
363	9.1113.0027*5	2	2	M10x20 DIN 933-8.8	
364	9.1029.0024.2	1	1	M30x1,5 DIN 934-10	
365	4.1220.1330.0	1	1		

LELY

SPLENDIMO	type nummer type number numéro de type Typnummer	vanaf serienummer as from serial number après numéro de serie ab Seriennummer
280 TC	4.1220.9000.1	30007617



E064-08-00

REF.	ONDERDEELNR. PART NUMBER REFERENCE TEILNUMMER	AANTAL QUANTITY QUANTITE ANZAHL	
------	--	--	--

301	4.1220.1499.0	6	
302	4.1220.1467.0	6	= REF. 273
303	9.1031.0014.4	6	M22x1,5 DIN937-22H= REF. 272
304	9.1113.0341*3	4	M8x20 DIN 933-10.9
305	9.1051.0001.6	6	A8,2 DIN 6798 [#####]
307	9.1051.0002.0	14	A10,5 DIN 6798 [#####]
308	4.1220.1493.0	14	
309	4.1220.1474.0	14	
310	4.1220.1478.0	8	[RD] L= 83
	4.1220.1479.0	6	[LD] L= 83
311	4.1220.1465.0	14	M10x18 DIN 933-10.9
312	4.1228.0100.0	1	
313	9.1030.0040*3	4	M8 DIN 985-10
314	9.1043.0061.4	6	OR Ø23x2 = REF. 275
315	9.1072.0030.0	6	3,2x36 DIN 94
316	4.1220.0142.0	1	
317	9.1113.0013*5	6	M8x16 DIN 933-8.8
318	9.1108.0063.5	1	Ø9,3

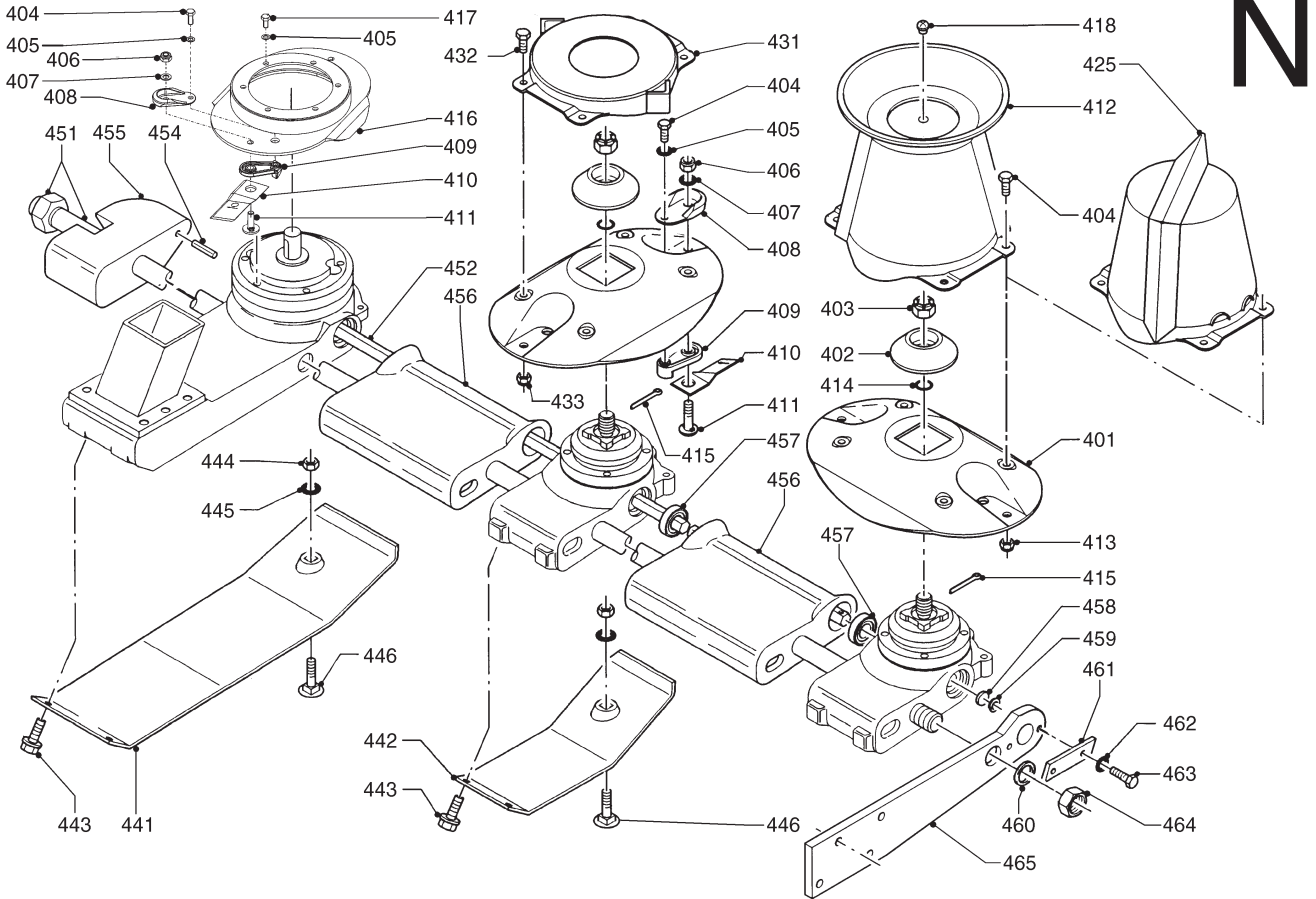
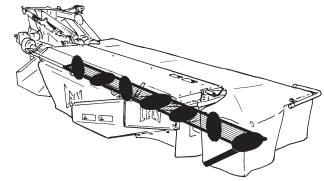
325 A 4.1220.0360.0 (1)

REF.	ONDERDEELNR. PART NUMBER REFERENCE TEILNUMMER	AANTAL QUANTITY QUANTITE ANZAHL	
------	--	--	--

341	4.1220.1953.0	1	Slijtslof Wear skid Patin d'usure Verschleißkufe 6mm
342	4.1220.1962.0	6	Slijtsloffen Wear skids Patins d'usure Verschleißkufen 4mm
343	9.1114.0009*0	14	M10x30 8.8
344	9.1029.0005*4	7	M10 DIN 934-8
345	9.1051.0002.0	7	A10,5 DIN 6798 [#####]
346	9.1058.0015*6	7	M10x35 DIN 603-8.8
351	4.1220.0040.0	1	
352	4.1220.0039.0	1	
354	9.1070.0026.5	1	Ø10x40 DIN 1481
355	4.1220.0728.0	1	L= 110
356	4.1220.0033.0	6	
357	4.1201.0145.0	11	
358	4.1201.0329.0	1	L= 5
359	9.1120.0028.6	1	18x1,00 DIN 472
360	9.1052.0011*1	1	S30x42x2,5 DIN 988 [——]
361	4.1220.0034.0	1	
362	9.1051.0002.0	2	A10,5 DIN 6798 [#####]
363	9.1113.0027*5	2	M10x20 DIN 933-8.8
364	9.1029.0024.2	1	M30x1,5 DIN 934-10
365	4.1220.1330.0	1	



SPLENDIMO		type nummer type number número de type Typnummer	vanaf serienummer as from serial number après numéro de serie ab Serienummer
240 TC	A	4.1224.0018.1	10702 - 0520
	B	4.1224.0019.1	10806 - 0537
	B	4.1224.0020.1	3000000
	B	4.1224.0040.1	3000768
280 TC	A	4.1220.0021.1	10807 - 0501
	B	4.1220.0023.1	10803 - 0532
	B	4.1220.0024.1	3000000
	B	4.1220.9000.1	3000761



E064-06-01

ONDERDEELNR. PART NUMBER REFERENCE TEILNUMMER	AANTAL QUANTITY QUANTITE ANZAHL	
--	--	--

240 280

401	4.1225.1489.0	5 6	
402	4.1220.1467.0	5 6	= REF. 273
403	9.1031.0014.4	5 6	M22x1,5 DIN 937-22H = REF. 272
404	9.1113.0341*3	16 18	M8x20 DIN 933-10.9
405	9.1051.0001.6	18 20	A8,2 DIN 6798 [####]
406	9.1030.0018*2	12 14	M10 DIN 985-10
407	9.1051.0002.0	12 14	A10,5 DIN 6798 [####]
408	4.1225.0449.0	12 14	
409	4.1201.0142.0	12 14	
410	4.1201.1474.0	6 8	[RD] L= 120
	4.1201.1473.0	6 6	[LD][x] L= 120
411	4.1201.0141*0	12 14	M10x32 DIN 267-12.9
412 A	4.1225.0480.0	1 1	
413	9.1030.0040*3	4 4	M8 DIN 985-10
414	9.1043.0061.4	5 6	OR Ø23x2 = REF. 275
415	9.1072.0030.0	5 6	3,2x36 DIN 94
416	4.1258.0670.0	1 1	
417	9.1113.0013*5	6 6	M8x16 DIN 933-8.8
418 A	9.1108.0063.5	1 1	Ø9,3
425 B	4.1225.0640.0	(1) (1)	
431	4.1225.0620.0	(4) (5)	
432	9.1113.0014*6	(16) (20)	M8x20 DIN 933-8.8
433	9.1030.0012*3	(16) (20)	M8 DIN 985-8

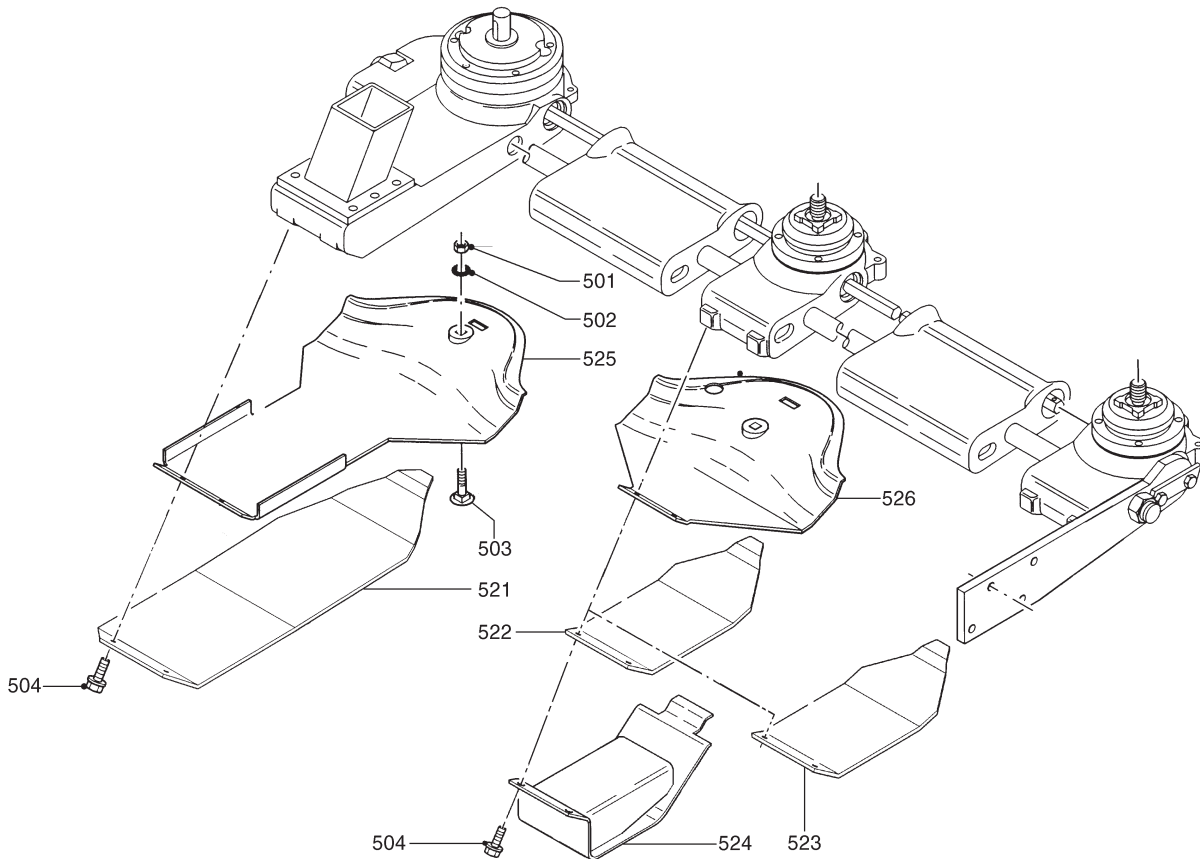
ONDERDEELNR. PART NUMBER REFERENCE TEILNUMMER	AANTAL QUANTITY QUANTITE ANZAHL	
--	--	--

240 280

441	4.1220.1953.0	1 1	Slijtslof Wear skid Patin d'usure Verschleißkufe	6mm
442	4.1220.1962.0	5 6	Slijtsloffes Wear skids Patin d'usure Verschleißkufen	4mm
443	9.1114.0009*0	12 14	M10x30 8.8	
444	9.1029.0005*4	6 7	M10 DIN 934-8	
445	9.1051.0002.0	6 7	A10,5 DIN 6798 [####]	
446	9.1058.0015*6	6 7	M10x35 DIN 603-8.8	
451	4.1224.0110.0	1 -		
	4.1220.0040.0	- 1	[x]	
452	4.1224.0129.0	1 -		
	4.1220.0039.0	- 1	[x]	
454	9.1070.0026.5	1 1	Ø10x40 DIN 1481	
455	4.1220.0728.0	1 1	L= 110	
456	4.1220.0033.0	5 6		
457	4.1201.0145.0	9 11		
458	4.1201.0329.0	1 1	L= 5	
459	9.1120.0028.6	1 1	18x1,00 DIN 472	
460	9.1052.0011*1	1 1	S30x42x2,5 DIN 988 [—]	
461	4.1220.0034.0	1 1		
462	9.1051.0002.0	2 2	A10,5 DIN 6798 [####]	
463	9.1113.0027*5	2 2	M10x20 DIN 933-8.8	
464	9.1029.0024.2	1 1	M30x1,5 DIN 934-10	
465	4.1220.1330.0	1 1		

LELY

SPLENDIMO	type nummer type number numéro de type Typnummer	vanaf serienummer as from serial number après numéro de serie ab Seriennummer	SPLENDIMO	type nummer type number numéro de type Typnummer	vanaf serienummer as from serial number après numéro de serie ab Seriennummer
240 TC	4.1224.0017.1	3002225	280TC	4.1220.0021.1	10807 - 0501
	4.1224.0018.1	10702 - 0520		4.1220.0022.1	10805 - 0597
	A 4.1224.0019.1	10806 - 0537		A 4.1220.0023.1	10803 - 0532
	A 4.1224.0020.1	30000000		A 4.1220.0024.1	3000000
A 4.1224.0040.1	3000768	A 4.1220.9000.2	3000761		



E128-02-01

REF.	ONDERDEELNR. PART NUMBER REFERENCE TEILNUMMER	AANTAL QUANTITY QUANTITE ANZAHL		
------	--	--	--	--

240 280

501	9.1029.0005*4	(6) (7)	M10 DIN 934-8	
502	9.1051.0002.0	(6) (7)	A10,5 DIN 6798	[####]
503	9.1058.0015*6	(6) (7)	M10x35 DIN 603-8.8	
504	9.1114.0009*0	(12) (14)	M10x30 8.8	
521	A 4.1220.0499.0	(1) (1)	Slijtplaat Wear plate Plaque d'usure Verschleißplatte	6mm
522	A 4.1220.1329.0	(5) (6)	Slijtplaten Wear plates Plaques d'usure Verschleißplatten	4mm
523	4.1220.1911.0	(5) (6)	Slijtplaten Wear plates Plaques d'usure Verschleißplatten	8mm
524	4.1220.1930.0	(5) (6)	Verhoogde slijtplaten Top skids Plaques réhausseurs Erhöhte Verschleißplatten	6mm

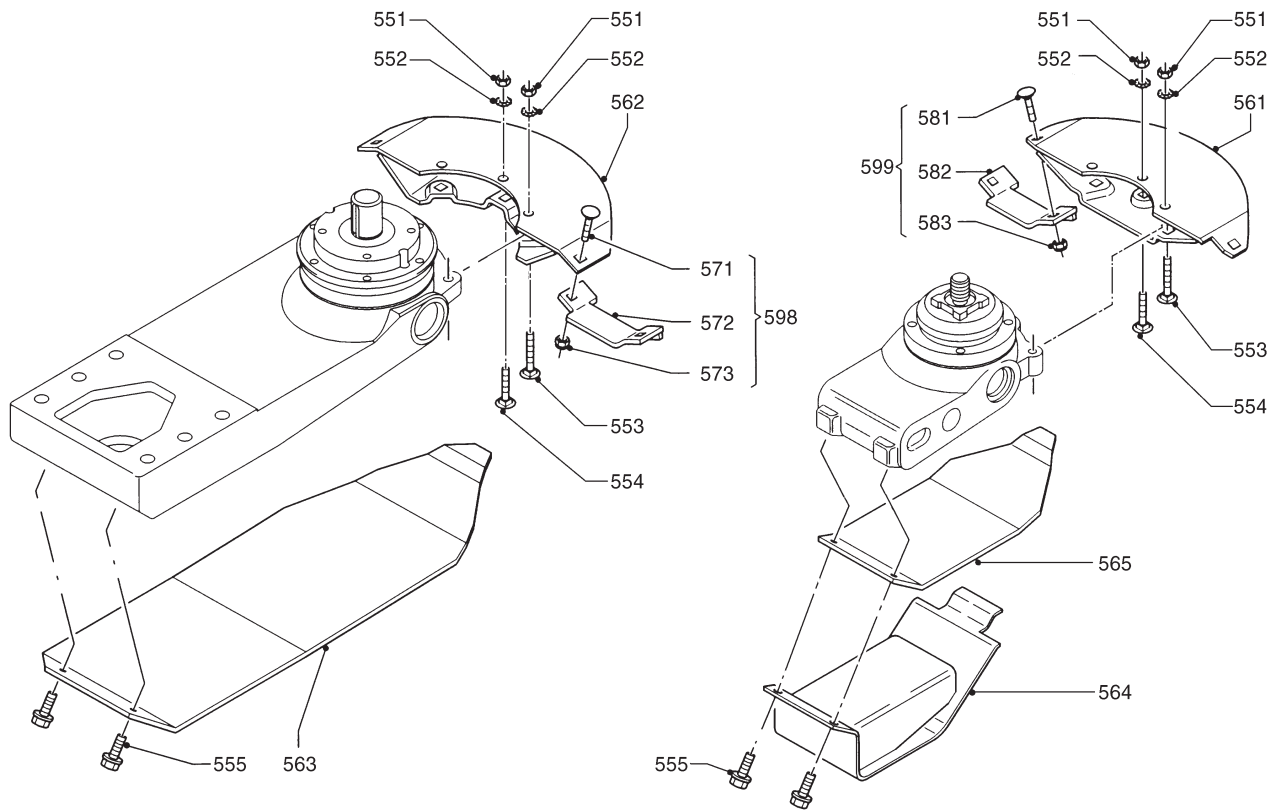
REF.	ONDERDEELNR. PART NUMBER REFERENCE TEILNUMMER	AANTAL QUANTITY QUANTITE ANZAHL		
------	--	--	--	--

240 280

525	4.1220.1954.0	(1) (1)	Slijtslof Wear skid Patin d'usure Verschleißkufe	4mm
526	4.1220.1963.0	(5) (6)	Slijtsloffes Wear skids Patins d'usure Verschleißkufen	4mm

LELY

SPLENDIMO	type number type number numéro de type Typnummer	vanaf serienummer as from serial number après numéro de serie ab Seriennummer	SPLENDIMO	type number type number numéro de type Typnummer	vanaf serienummer as from serial number après numéro de serie ab Seriennummer
240 TC	4.1224.0017.1	3002225	280 TC	4.1220.0021.1	10807 - 0501
	4.1224.0018.1	10702 - 0520		4.1220.0022.1	10805 - 0597
	4.1224.0019.1	10806 - 0537		4.1220.0023.1	10803 - 0532
	4.1224.0020.1	30000000		4.1220.0024.1	3000000
	4.1224.0040.1	3000768		4.1220.9000.2	3000761



E104-02-01

REF.	ONDERDEELNR. PART NUMBER REFERENCE TEILNUMMER	AANTAL QUANTITY QUANTITE ANZAHL	
------	--	--	--

240 280

551	9.1029.0005*4	(18) (21)	M10 DIN 934-8	
552	9.1051.0002.0	(18) (21)	A10,5 DIN 6798	[####]
553	9.1058.0049*5	(12) (14)	M10x45 DIN 603-8.8	
554	9.1058.0048*4	(6) (7)	M10x40 DIN 603-8.8	
555	9.1114.0009*0	(12) (14)	M10x30 8.8	
561	4.1220.0341.0	(5) (6)	Glijsloten Skids Patins Kufen	3mm
562	4.1220.0351.0	(1) (1)	Glijslot Skid Patin Kufe	3mm
563	4.1220.1966.0	(1) (1)	Slijtplaat Wear plate Plaque d'usure Verschleißplatte	6mm
564	4.1225.0400.0	(5) (6)	Verhoogde slijtplaten Top skids Plaques réhausseurs Erhöhte Verschleißplatten	6mm
565	4.1225.0499.0	(5) (6)	Slijtplaten Wear plates Plaques d'usure Verschleißplatten	4mm

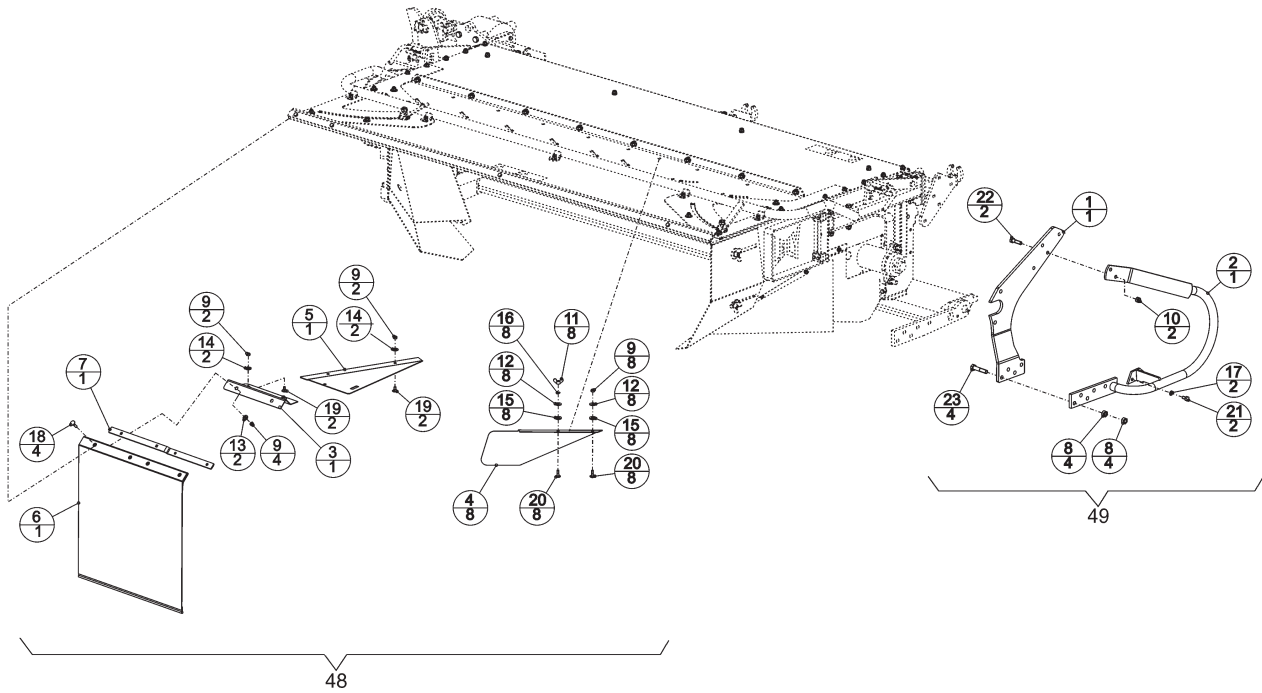
REF.	ONDERDEELNR. PART NUMBER REFERENCE TEILNUMMER	AANTAL QUANTITY QUANTITE ANZAHL	
------	--	--	--

240 280

571	9.1058.0027*4	(2) (2)	M10x25 DIN 603
572	4.1220.0250.0	(1) (1)	[←135→]
573	9.1030.0004*2	(2) (2)	M10 DIN 985-8
581	9.1058.0027*4	(8) (10)	M10x25 DIN 603
582	4.1225.0550.0	(4) (5)	[←125→]
583	9.1030.0004*2	(8) (10)	M10 DIN 985-8
598	4.1220.0260.8	(1) (1)	= REF. 571-574 [←135→]
599	4.1225.0540.8	(4) (5)	= REF. 581-584 [←125→] Maibalk-steenbescherming Cutter bar stone protection Kit de protection anti-pierres Mähbalken-Steinschutzsatz



SPLENDIMO	type nummer type number numéro de type Typnummer	vanaf serienummer as from serial number après numéro de serie ab Seriennummer	SPLENDIMO	type nummer type number numéro de type Typnummer	vanaf serienummer as from serial number après numéro de serie ab Seriennummer
240 TC	4.1224.0017.1	3002225	280 TC	4.1220.0021.1	10807 - 0501
	4.1224.0018.1	10702 - 0520		4.1220.0022.1	10805 - 0597
	4.1224.0019.1	10806 - 0537		4.1220.0023.1	10803 - 0532
	4.1224.0020.1	3000000		4.1220.0024.1	3000000
A	4.1224.0040.1	3000768	A	4.1220.9000.2	3000761



E219-02-01

REF.	ONDERDEELNR. PART NUMBER REFERENCE TEILNUMMER	AANTAL QUANTITY QUANTITE ANZAHL	
------	--	--	--

240 280

1	4.1220.0912.0	(1) (1)	= REF. 8 Pag. 18
A	4.1220.0913.0	(1) (1)	[x]= REF. 7 Pag. 19
2	4.1220.1060.0	(1) (1)	
3	4.1220.1451.0	(1) (1)	
4	4.1220.1547.0	(6) (8)	
5	4.1220.1879.0	(1) (1)	
6	4.1220.1904.0	(1) (1)	
7	4.1220.1914.0	(1) (1)	
8	9.1029.0012*4	(8) (8)	M14 DIN 934-8
9	9.1030.0012*3	(14) (16)	M8 DIN 985-8
10	9.1030.0013*4	(2) (2)	
11	9.1032.0002*5	(6) (8)	M8 DIN 315-G-5
12	9.1048.0005.6	(12) (16)	A8,4 DIN 9021 [—]
13	9.1048.0007.1	(2) (2)	A10,4 DIN 125 [—]
14	9.1048.0012.6	(4) (4)	A13 DIN 125 [—]
15	9.1048.0062.0	(12) (16)	A10 DIN 7349 [—]
16	9.1051.0001.6	(6) (8)	A8,2 DIN 6798 [####]
17	9.1051.0002.0	(2) (2)	A10,5 DIN 6798 [####]
18	9.1058.0009*0	(4) (4)	M8x30 DIN 603
19	9.1058.0036.6	(4) (4)	M8x16 DIN 603
20	9.1058.0041*1	(12) (16)	M8x25 DIN 603-8.8
21	9.1113.0027*5	(2) (2)	M10x20 DIN 933-8.8
22	9.1113.0054*4	(2) (2)	M12x45 DIN 931-8.8
23	9.1113.0343*5	(4) (4)	M14x70 DIN 931-8.8

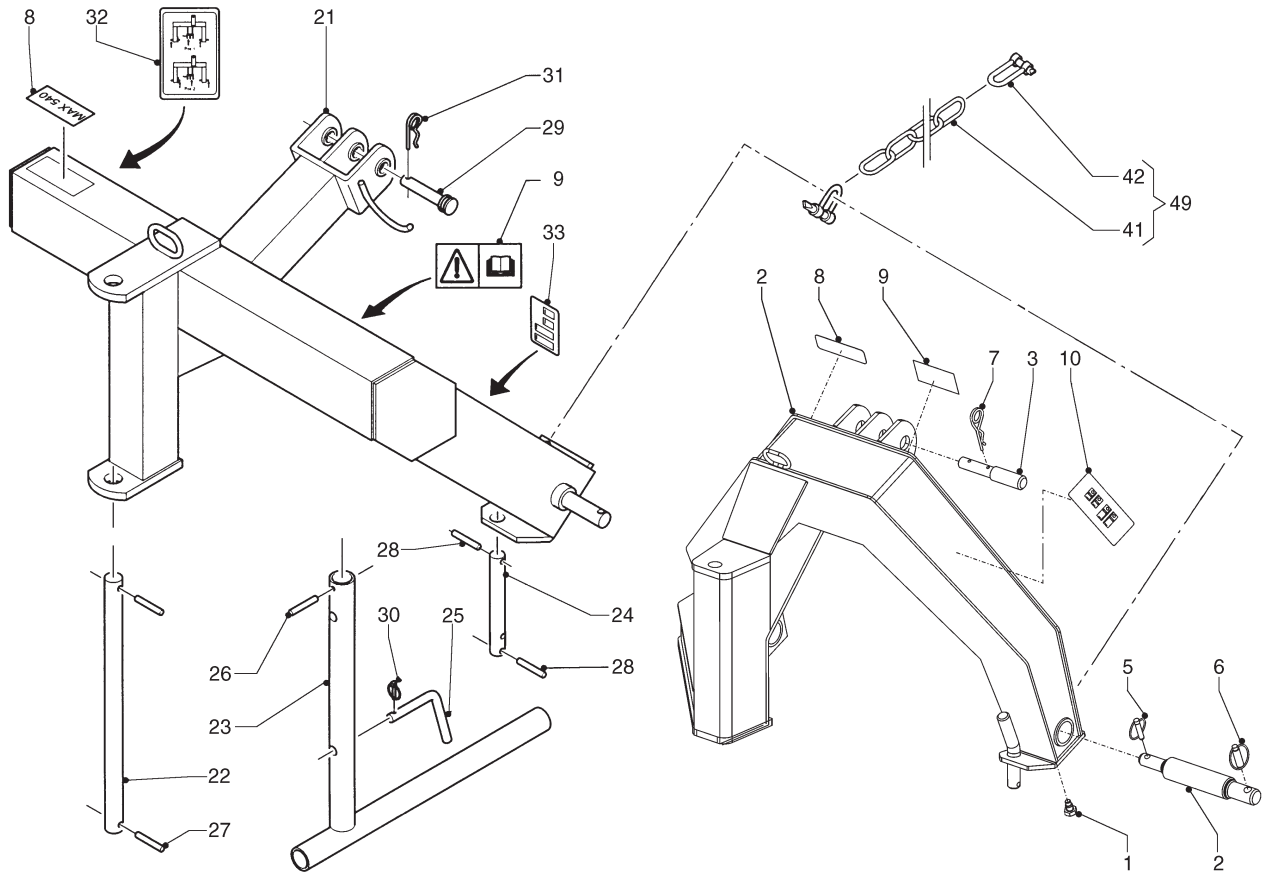
REF.	ONDERDEELNR. PART NUMBER REFERENCE TEILNUMMER	AANTAL QUANTITY QUANTITE ANZAHL	
------	--	--	--

240 280

48	4.1220.1871.0	- (1)	= REF. (3-7)+9+(11-16)+(18-20)
	4.1224.0491.0	(1) -	[x]= REF. (3-7)+9+(11-16)+(18-20)
49	4.1220.1050.0	(1) (1)	= REF. 2+8+10+17+21+22+23

LELY

SPLENDIMO	type number type number numéro de type Typnummer	vanaf serienummer as from serial number après numéro de serie ab Seriennummer	SPLENDIMO	type number type number numéro de type Typnummer	vanaf serienummer as from serial number après numéro de serie ab Seriennummer
240 TC	4.1224.0017.1	3002225	280 TC	4.1220.0021.1	10807 - 0501
	4.1224.0018.1	10702 - 0520		4.1220.0022.1	10805 - 0597
	4.1224.0019.1	10806 - 0537		4.1220.0023.1	10803 - 0532
	A 4.1224.0020.1	3000000		4.1220.0024.1	3000000
	4.1224.0040.1	3000768		A-B 4.1220.9000.2	3000761



E109-03-00

REF.	ONDERDEELNR. PART NUMBER REFERENCE TEILNUMMER	AANTAL QUANTITY QUANTITE ANZAHL
------	--	--

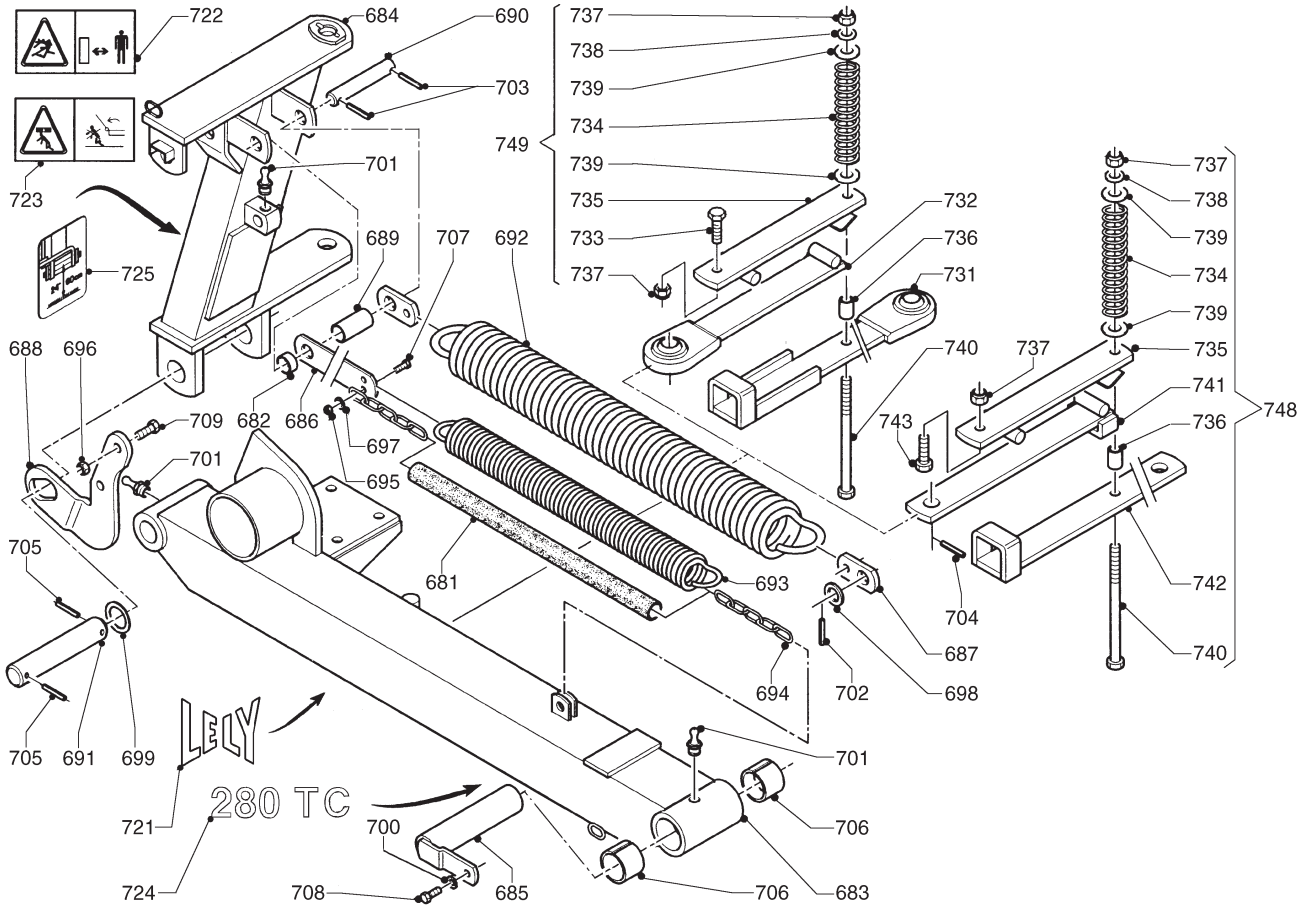
1	B 4.1208.0347.0	(2)
2	B 4.1220.1410.0	(1)
3	B 4.1220.1460.0	(1)
4	B 4.1220.1461.0	(2)
5	B 9.1123.0007.3	(2) Ø11x8
6	B 9.1123.0009.5	(2) Ø16x8
7	B 9.1124.0004.6	(1)
8	9.1170.0125.0	(1)+1 "MAX. 540/min"
9	9.1170.0408.0	(1)+1
10	B 9.1170.0430.1	(1) "Maames 83 / 120 mm" "Knife 83 / 120 mm" "Couteau 83 / 120 mm" "Messer 83 / 120 mm"
21	4.1220.1710.0	1
A	4.1242.0370.0	1 [x]
22	4.1207.0611.0	1 Ø30
23	4.1220.0940.0	1
24	4.1220.1466.0	1
25	4.1241.1921.0	1
26	9.1070.0023.2	1 Ø8x50 DIN 1481
27	9.1070.0039.4	2 Ø10x50 DIN 1481
28	9.1070.0028.0	1 Ø10x60 DIN 1481
29	9.1088.0005.1	1 25-95

REF.	ONDERDEELNR. PART NUMBER REFERENCE TEILNUMMER	AANTAL QUANTITY QUANTITE ANZAHL
------	--	--

30	9.1123.0003*6	1 Ø6
31	9.1124.0004.6	1 Ø5
32	9.1170.0431.2	1 Pos.1 - Pos. 2
33	9.1170.0430.1	1 "Maames 83 / 120 mm" "Knife 83 / 120 mm" "Couteau 83 / 120 mm" "Messer 83 / 120 mm"
33	A 9.1170.0573.4	1 [x]"Maames 100 / 120 mm" [x]"Knife 100 / 120 mm" [x]"Couteau 100 / 120 mm" [x]"Messer 100 / 120 mm"
41	9.1144.0018*0	(1) 13x (10x65)
42	9.1146.0005*6	(2) 5/8"
49	4.1203.2080.0	(1) = REF. 41+42

LELY

SPLENDIMO	type number type number numéro de type Typnummer	vanaf serienummer as from serial number après numéro de serie ab Seriennummer	SPLENDIMO	type number type number numéro de type Typnummer	vanaf serienummer as from serial number après numéro de serie ab Seriennummer
240 TC	4.1224.0017.1	3002225	280 TC	4.1220.0021.1	10807 - 0501
	4.1224.0018.1	10702 - 0520		4.1220.0022.1	10805 - 0597
	4.1224.0019.1	10806 - 0537		4.1220.0023.1	10803 - 0532
	4.1224.0020.1	30000000		4.1220.0024.1	3000000
	4.1224.0040.1	3000768		4.1220.9000.2	3000761



E097-05-02

REF.	ONDERDEELNR. PART NUMBER REFERENCE TEILNUMMER	AANTAL QUANTITY QUANTITE ANZAHL	
------	--	--	--

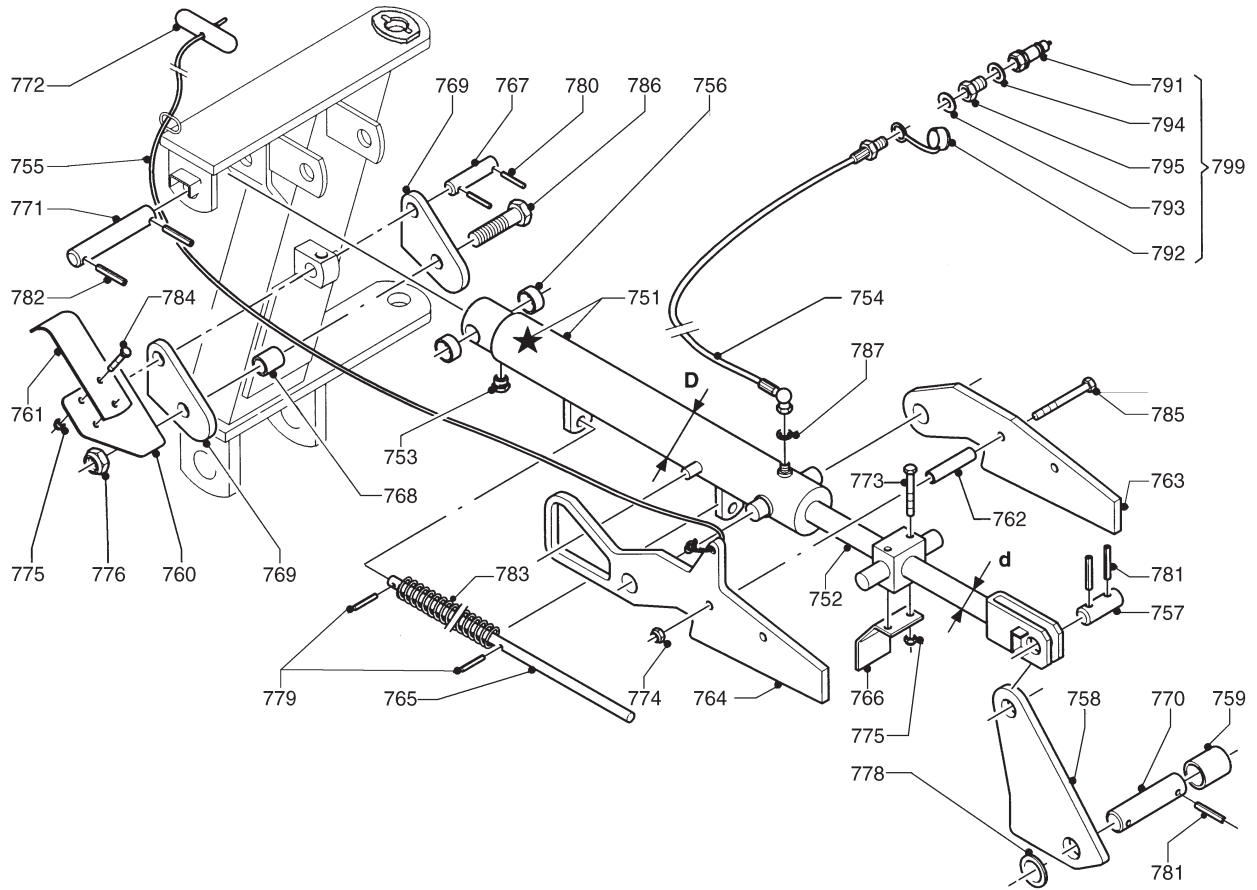
681	4.1203.1494.0	1	
682	4.1207.0453.0	1	
683	4.1220.0851.0	1	
684	4.1220.0920.0	1	
685	4.1220.1160.0	1	
686	4.1220.1944.0	1	240 TC
	4.1220.1965.0	1	[x]280 TC
687	4.1220.1978.0	2	
688	4.1220.1979.0	1	
689	4.1220.1982.0	1	
690	4.1220.1983.0	1	
691	4.1220.1985.0	1	
692	4.1220.1993.0	1	
693	4.1225.1490.0	1	
694	4.1225.1491.0	1	Ø6x42 L= 805 mm
695	9.1030.0004*2	1	M10 DIN 985-8
696	9.1030.0013*4	2	M12 DIN 985-8
697	9.1048.0008*2	1	A10,5 DIN 9021
698	9.1048.0045*4	1	A26 DIN 126
699	9.1048.0063*1	1	41 DIN 1441
700	9.1051.0002.0	1	A10,5 DIN 6798
701	9.1068.0007*2	3	AM 8x1,25
702	9.1070.0023.2	1	Ø8x50 DIN 1481
703	9.1070.0024.3	2	Ø8x60 DIN 1481
704	9.1070.0028.0	1	Ø10x60 DIN 1481
705	9.1070.0038.3	2	Ø10x75 DIN 1481
706	9.1077.0008.1	2	50/60x40 DIN 1498
707	9.1113.0117*4	1	M10x35 DIN 933-8.8
708	9.1113.0120*0	1	M10x30 DIN 933-8.8
709	9.1113.0125*5	2	M12x35 DIN 933-8.8

REF.	ONDERDEELNR. PART NUMBER REFERENCE TEILNUMMER	AANTAL QUANTITY QUANTITE ANZAHL	
------	--	--	--

721	9.1170.0200.2	1	"LELY"
722	9.1170.0410.2	1	
723	9.1170.0420.5	1	
724	9.1170.0516.3	1	"280 TC"
	9.1170.0515.2	1	[x]"240 TC"
725	9.1170.0392.5	1	"Maaihoogte 24" 60 cm"
			"Mowing height 24" 60 cm"
			"Hautre de fauchage 24" 60 cm"
			"Mähhöhe 24" 60 cm"
731	4.1220.1370.0	(1)	
732	4.1220.1380.0	(1)	
733	9.1113.0119*6	(1)	M14x30 DIN 933-10.9
734	4.1203.0219.0	(1)	
735	4.1219.0111.0	(1)	
736	4.1220.0809.0	(1)	
737	9.1030.0015*6	(2)	M14 DIN 985-8
738	9.1048.0053*5	(1)	A15 DIN 125
739	9.1091.0008*1	(2)	40x14,3x1,5 DIN 2093
740	9.1113.0161*6	(1)	M14x260 DIN 931-8.8
741	4.1219.0122.0	(1)	
742	4.1220.0811.0	(1)	
743	9.1113.0178*2	(1)	M14x35 DIN 933-10.9
748	4.1220.0801.0	(1)	= REF. 734-743
749	4.1220.1360.0	(1)	= REF. 731-740



SPLENDIMO	type nummer type number numéro de type Typnummer	vanaf serienummer as from serial number après numéro de serie ab Seriennummer	SPLENDIMO	type nummer type number numéro de type Typnummer	vanaf serienummer as from serial number après numéro de serie ab Seriennummer
240 TC	4.1224.0017.1	3002225	280 TC	4.1220.0021.1	10807 - 0501
	4.1224.0018.1	10702 - 0520		4.1220.0022.1	10805 - 0597
	4.1224.0019.1	10806 - 0537		4.1220.0023.1	10803 - 0532
	4.1224.0020.1	30000000		4.1220.0024.1	3000000
	4.1224.0040.1	3000768		4.1220.9000.2	3000761



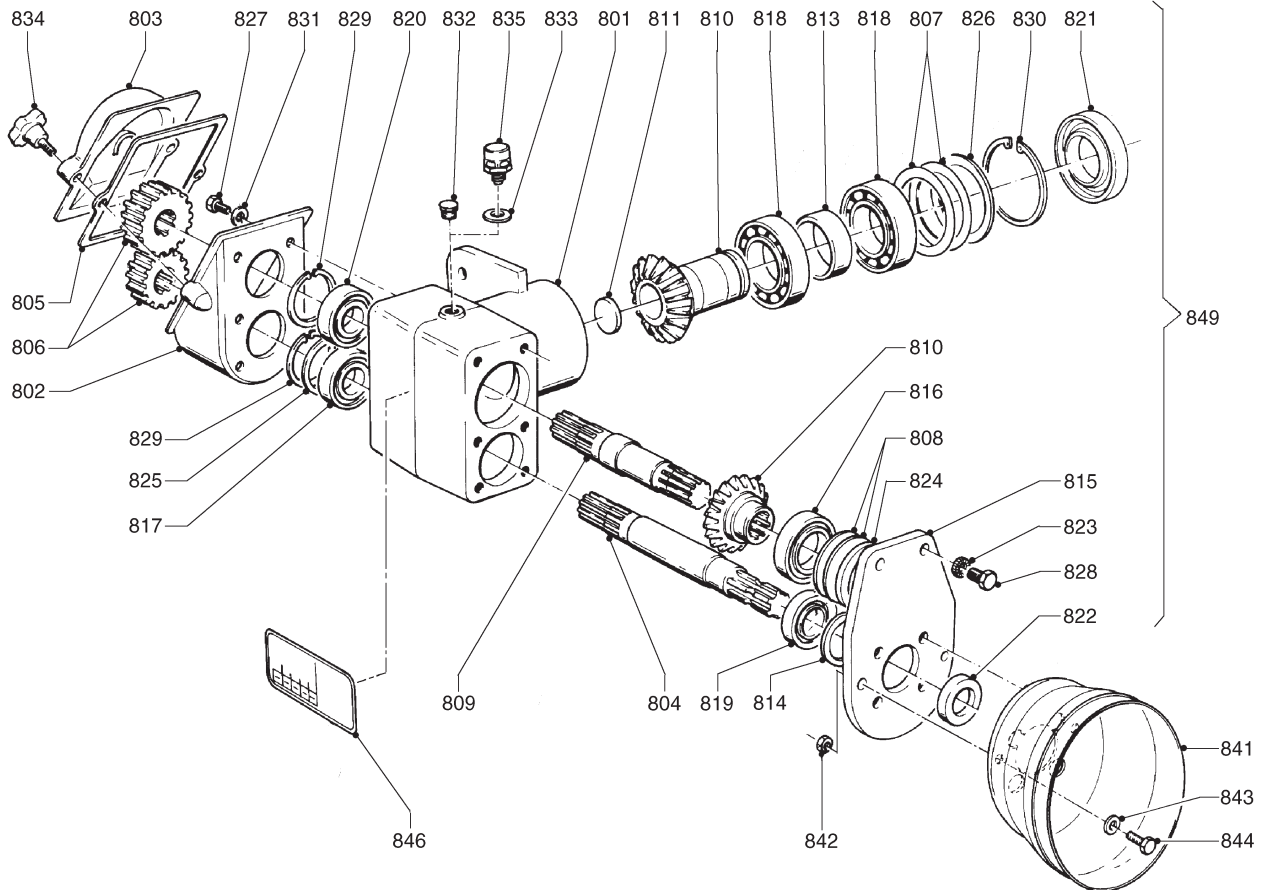
E098-04-03

REF.	ONDERDEELNR. PART NUMBER REFERENCE TEILNUMMER	AANTAL QUANTITY QUANTITE ANZAHL	
751	4.1220.0842.0	1	(751= 751+ ★ + 752 + 753)
★	4.1210.0049.0	(1)	(d= Ø30, D= Ø60/70) [A+A][x]
752	4.9000.0112.0	(1)	
753	9.1150.0004.1	(1)	M14x1,5
754	4.1016.0530.0	1	L= 2060 mm
755	4.1201.1462.0	1	Ø6x4m (1m= 9.1163.0004.2)
756	4.1207.0453.0	2	
757	4.1207.0612.0	1	Ø25
758	4.1220.1300.0	1	
759	4.1220.1945.0	1	
760	4.1220.1946.0	1	
761	4.1220.1947.0	1	
762	4.1220.1948.0	2	
763	4.1220.1949.0	1	
764	4.1220.1950.0	1	
765	4.1220.1951.0	1	
766	4.1220.1952.0	1	
767	4.1220.1972.0	1	
768	4.1220.1973.0	1	
769	4.1220.1975.0	2	
770	4.1220.1980.0	1	
771	4.1220.1983.0	1	
772	2.3201.0328.0	1	
773	9.1113.0175*6	2	M8x60 DIN 931-8.8

REF.	ONDERDEELNR. PART NUMBER REFERENCE TEILNUMMER	AANTAL QUANTITY QUANTITE ANZAHL	
774	9.1030.0004*2	2	M10 DIN 985-8
775	9.1030.0012*3	4	M8 DIN 985-8
776	9.1030.0017*1	1	M20 DIN 985-8
778	9.1048.0044*3	1	A31 DIN 125 []
779	9.1070.0012.5	2	Ø5x26 DIN 1481
780	9.1070.0018.4	2	Ø6x40 DIN 1481
781	9.1070.0023.2	4	Ø8x50 DIN 1481
782	9.1070.0024.3	2	Ø8x60 DIN 1481
783	9.1090.0022.2	3	
784	9.1113.0013*5	2	M8x16 DIN 933-8.8
785	9.1113.0043*0	2	M10x110 DIN 931-8.8
786	9.1113.0140*6	1	M20x80 DIN 931-8.8
787	9.1137.0401.5	1	Ø14x20x1,5 Cu []
791	9.1137.0302.4	1	1/2" G
792	9.1137.0303.5	1	1/2" PVC
793	9.1137.0409.6	1	13,74x20,57x2,03
794	9.1137.0411.1	1	21,54x28,58x2,34
795	9.1137.0603.4	1	1/2"-1/4"
799	2.3201.2312.8	1	= REF. 791-795

LELY

SPLENDIMO	type nummer type number numéro de type Typnummer	vanaf serienummer as from serial number après numéro de serie ab Seriennummer	SPLENDIMO	type nummer type number numéro de type Typnummer	vanaf serienummer as from serial number après numéro de serie ab Seriennummer
240 TC	4.1224.0017.1	3002225	280 TC	4.1220.0021.1	10807 - 0501
	4.1224.0018.1	10702 - 0520		4.1220.0022.1	10805 - 0597
	4.1224.0019.1	10806 - 0537		4.1220.0023.1	10803 - 0532
	4.1224.0020.1	30000000		4.1220.0024.1	3000000
	4.1224.0040.1	3000768		4.1220.9000.2	3000761



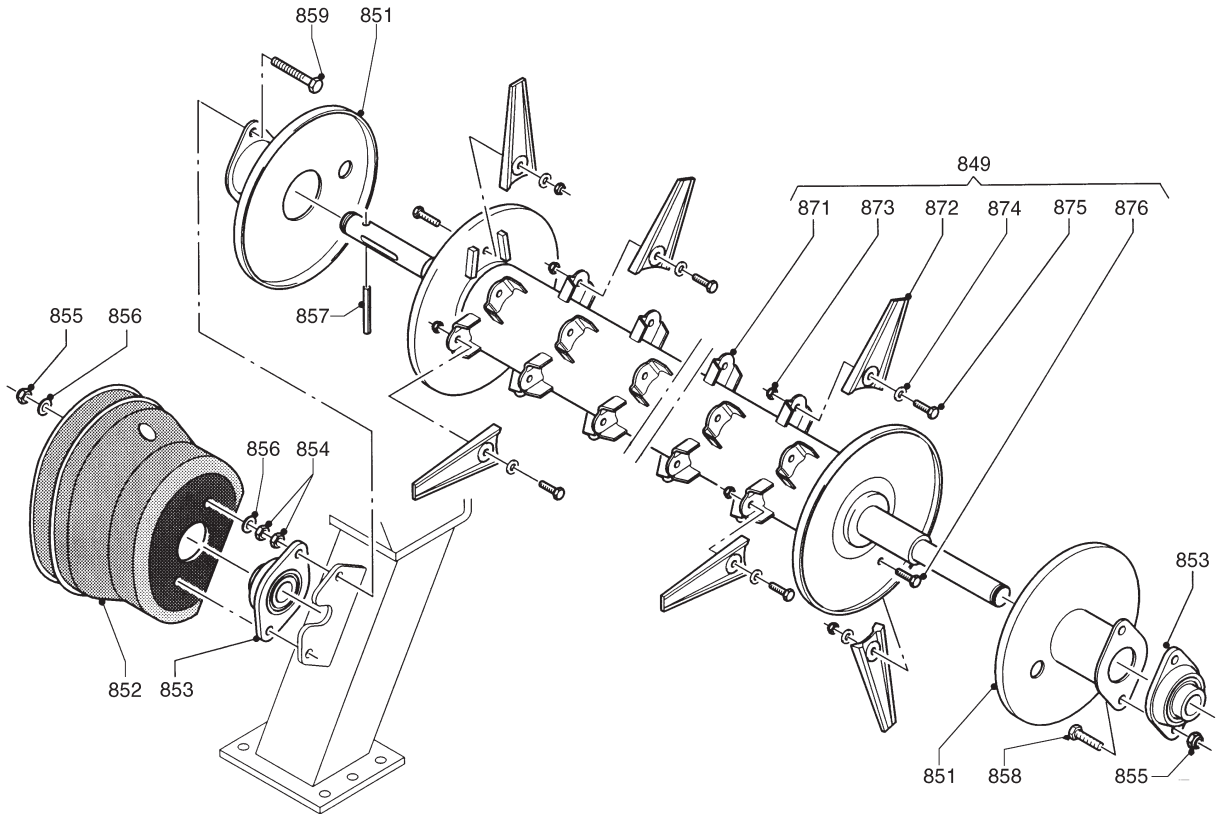
E050-04-02

REF.	ONDERDEELNR. PART NUMBER REFERENCE TEILNUMMER	AANTAL QUANTITY QUANTITE ANZAHL			
801	4.1217.0160.0 9.1171.0017.0	1 (0,8 L)	GP80 W90		
802	2.3217.0019.0	1			
803	2.3217.0020.0	1			
804	2.3217.0021.0	1			
805	2.3217.0026.0	1			
806	2.3217.0033.1 2.3217.0035.1	1 (1)	15/20 [x]16/19	[T+T] [T+T]	
807	4.1201.0310.0	1		[D+D]	
808	4.1207.0211.0	1		[D+D]	
809	4.1207.0214.0	1			
810	4.1207.0215.8	1+1	Z= 14/17	[T+T]	
811	4.1207.0216.0	1			
813	4.1217.0166.0	1			
814	4.1217.0167.0	1			
815	4.1217.0168.0	1			
816	9.1001.0023.1	1	6008		
817	9.1001.0062.5	1	6206 C4		
818	9.1001.0077.6	2	6210		
819	9.1001.0082.4	1	6006 C3		
820	9.1001.0134.0	1	6206 2RS1-C4		
821	9.1042.0051.2	1	50x90x10 DB	[> <]	
822	9.1042.0052.3	1	30x50x8 CB	[> <]	
823	9.1051.0002*0	6	A10,5 DIN 6798	[####]	

REF.	ONDERDEELNR. PART NUMBER REFERENCE TEILNUMMER	AANTAL QUANTITY QUANTITE ANZAHL			
824	9.1052.0010.0	1	55x68x3 DIN 988		
825	9.1093.0035.5	~	50x62x0,3 DIN 988		
826	9.1093.0067.2	1	70x90x0,5 DIN 988		
827	9.1113.0013.5	6	M8x16 DIN 933-8.8		
828	9.1113.0029*0	6	M10x25 DIN 933-8.8		
829	9.1120.0005.4	2	62x2,00 DIN 472		
830	9.1120.0014.6	1	90x3,00 DIN 472		
831	9.1121.0010.1	6	A8 DIN 127		[—/—]
832	9.1131.0003.5	(1)	1/8"		Stop Plug Bouchon Stopfen
833	9.1137.0405.2	1	Ø10,5x17x1,5 Cu		[—]
834	9.1141.0009.1	2	M10x35 DIN 6336		
835	9.1150.0014.4	1	1/8"		Ontluchter Breather Reniflard Entlüfter
841	4.1217.0169.0	1			
842	9.1030.0004*2	2	M10 DIN 985-8		
843	9.1048.0051*3	2	A10,5 DIN 125		[—]
844	9.1113.0120*0	2	M10x30 DIN 933-8.8		
846	9.1170.0316.6	1	"Z1-Z2= .. RPM"		
849	4.1217.0150.1	1	= REF. 801-835		



SPLENDIMO	type number type number numéro de type Typnummer	vanaf serienummer as from serial number après numéro de serie ab Seriennummer	SPLENDIMO	type number type number numéro de type Typnummer	vanaf serienummer as from serial number après numéro de serie ab Seriennummer
240 TC	4.1224.0017.1	3002225	280 TC	4.1220.0021.1	10807 - 0501
	4.1224.0018.1	10702 - 0520		4.1220.0022.1	10805 - 0597
	4.1224.0019.1	10806 - 0537		4.1220.0023.1	10803 - 0532
	4.1224.0020.1	30000000		4.1220.0024.1	3000000
	4.1224.0040.1	3000768		4.1220.9000.2	3000761



E100-01-01

REF.	ONDERDEELNR. PART NUMBER REFERENCE TEILNUMMER	AANTAL QUANTITY QUANTITE ANZAHL	
------	--	--	--

240 280

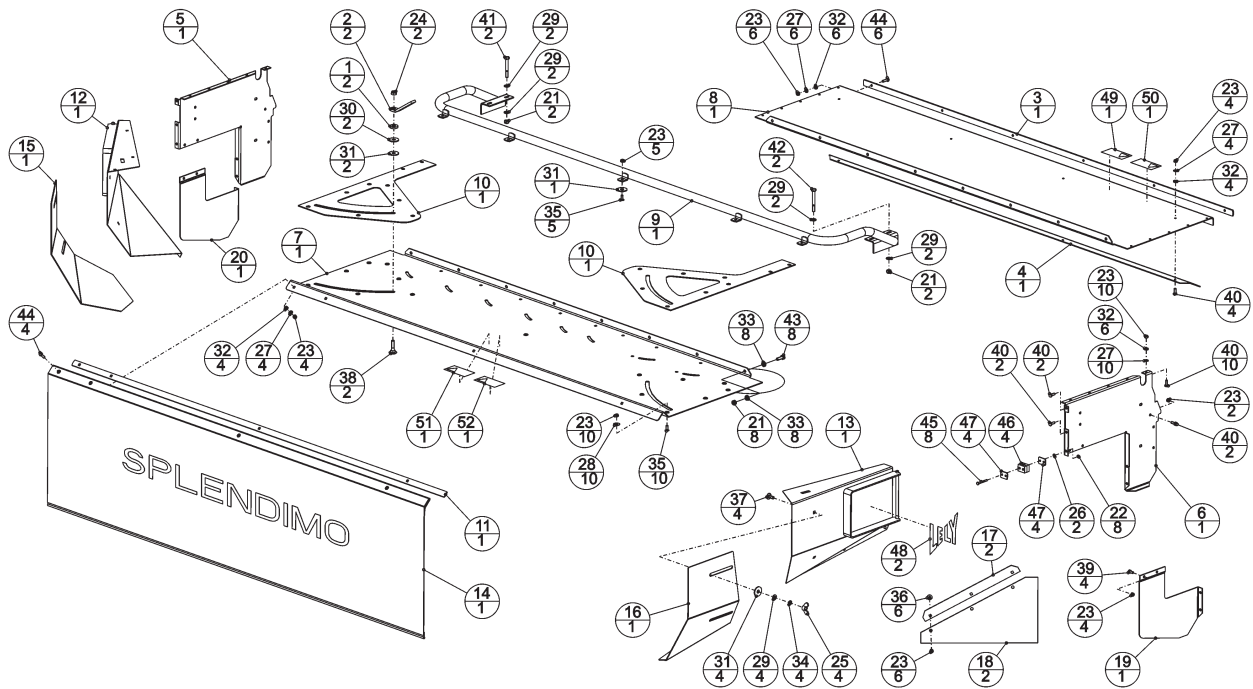
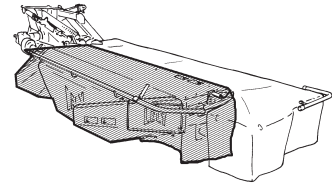
851	4.1220.1170.0	2 2	
852	4.1220.1991.0	1 1	
853	9.1008.0018.3	2 2	FYTB 35FM-C3
854	9.1029.0012*4	4 4	M14 DIN 934-8
855	9.1030.0015*6	4 4	M14 DIN 985-8
856	9.1048.0053*5	4 4	A15 DIN 125 []
857	9.1070.0051.2	1 1	Ø13x80 DIN 1481
858	9.1113.0246*0	2 -	M14x55 DIN 931-8.8
	9.1113.0231*6	- 2	M14x65 DIN 931-8.8
859	9.1113.0300*5	2 2	M14x90 DIN 933-8.8
871	4.1224.0701.0	1 -	
	4.1220.1511.0	- 1	
872	4.1207.0228.0	76 95	
873	9.1030.0004*2	76 95	M10 DIN 985-8
874	9.1048.0008*2	76 95	A10,5 DIN 9021 []
875	9.1113.0029*0	74 93	M10x25 DIN 933-8.8
876	9.1113.0120*0	2 2	M10x30 DIN 933-8.8

REF.	ONDERDEELNR. PART NUMBER REFERENCE TEILNUMMER	AANTAL QUANTITY QUANTITE ANZAHL	
------	--	--	--

849	4.1224.0710.0	1	= REF. 871-876 240 TC
	4.1220.1500.0	1	[x]= REF. 871-876 280 TC

LELY

SPLENDIMO	type nummer type number número de type Typnummer	vanaf serienummer as from serial number après numéro de serie ab Serienummer
240 TC	4.1224.0017.1	3002225
	4.1224.0018.1	10702 - 0520
	4.1224.0019.1	10806 - 0537
	4.1224.0020.1	30000000
280 TC	4.1220.0021.1	10807 - 0501
	4.1220.0022.1	10805 - 0597
	4.1220.0023.1	10803 - 0532
	4.1220.0024.1	30000000



E223-01-00

REF.	ONDERDEELNR. PART NUMBER REFERENCE TEILNUMMER	AANTAL QUANTITY QUANTITE ANZAHL
------	--	--

240 280

1	1.1645.2673.0	2 2
2	4.1207.0184.0	2 2
3	4.1217.0125.0	- 1
	4.1224.1497.0	1 - [x]
4	4.1217.0364.0	- 1
	4.1224.1493.0	1 - [x]
5	4.1220.1118.0	1 1 [L]
6	4.1220.1119.0	1 1 [R]
7	4.1220.1448.0	- 1
	4.1224.1482.0	1 - [x]
8	4.1220.1449.0	- 1
	4.1224.1483.0	1 - [x]
9	4.1220.1450.0	- 1
	4.1224.0140.0	1 - [x]
10	4.1220.1452.0	2 2
11	4.1220.1454.0	- 1
	4.1224.1486.0	1 - [x]
12	4.1220.1881.0	1 1 [L]
13	4.1220.1891.0	1 1 [R]
14	4.1220.1905.0	- 1
	4.1224.1485.0	1 - [x]
15	4.1220.1908.0	- 1
16	4.1220.1909.0	- 1
17	4.1220.1967.0	2 2
18	4.1220.1987.0	2 2
19	4.1220.1997.0	1 1 [x][R]
20	4.1220.1998.0	1 1 [L]
21	9.1030.0004*2	12 12 M10 DIN 985-8
22	9.1030.0011*2	8 8 M6 DIN 985-8
23	9.1030.0012*3	50 51 M8 DIN 985-8
24	9.1030.0013*4	2 2 M12 DIN 985-8
25	9.1032.0003*6	- 4 M10 DIN 315-G-5

REF.	ONDERDEELNR. PART NUMBER REFERENCE TEILNUMMER	AANTAL QUANTITY QUANTITE ANZAHL
------	--	--

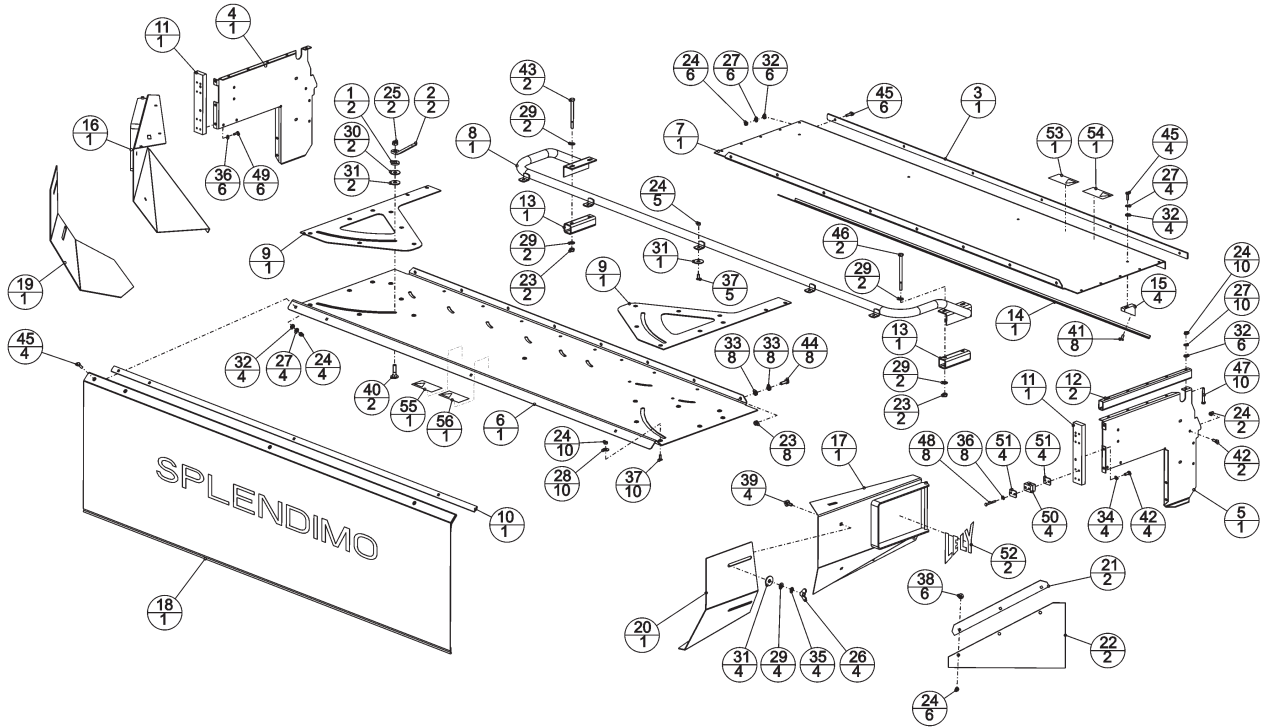
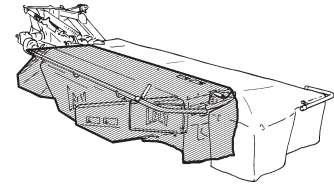
240 280

26	9.1048.0002*3	2 2 A6.4 DIN 125
27	9.1048.0004*5	23 24 A8.4 DIN 125
28	9.1048.0005*6	10 10 A8.4 DIN 9021
29	9.1048.0007*1	8 12 A10.5 DIN 125
30	9.1048.0041*0	2 2 A13 DIN 9021
31	9.1048.0067.5	3 7 A13 DIN 9021 Nylon
32	9.1049.0014.0	19 20 M8 Nylon
33	9.1049.0018.4	12 16 M10 Nylon
34	9.1051.0002.0	- 4 A10.5 DIN 6798
35	9.1057.0320.4	15 15 M8x20DIN 7991 A2-70
36	9.1058.0008*6	6 6 M8x20 DIN 603
37	9.1058.0027*4	- 4 M10x25 DIN 603
38	9.1058.0042*5	2 2 M12x50 DIN 603-8.8
39	9.1113.0013*6	4 4 M8x16 DIN 933-8.8
40	9.1113.0014*6	20 20 M8x20 DIN 933-8.8
41	9.1113.0042*6	2 2 M10x80 DIN 931-8.8
42	9.1113.0100*1	2 2 M10x90 DIN 931-8.8
43	9.1113.0120*0	6 8 M10x30 DIN 933-8.8
44	9.1113.0128*1	9 10 M8x25 DIN 933-8.8
45	9.1113.0181*5	8 8 M6x50 DIN 931-8.8
46	9.1137.0914.0	4 4 Cpl.
47	9.1137.0915.1	8 8
48	9.1170.0001.6	2 2 "LELY"
49	9.1170.0407.6	1 1
50	9.1170.0408.0	1 1
51	9.1170.0410.2	1 1
52	9.1170.0419.4	1 1





SPLENDIMO	type nummer type number numéro de type Typnummer	vanaf serienummer as from serial number après numéro de serie ab Seriennummer
240 TC	4.1224.0040.1	3000768
280 TC	4.1220.9000.2	3000761



E223-02-00

REF.	ONDERDEELNR. PART NUMBER REFERENCE TEILNUMMER	AANTAL QUANTITY QUANTITE ANZAHL
------	--	--

240 280

1	1.1645.2673.0	2 2
2	4.1207.0184.0	2 2
3	4.1217.0125.0	- 1
4	4.1224.1497.0	1 - [x]
	4.1220.1118.0	1 1 [L]
5	4.1220.1119.0	1 1 [R]
6	4.1220.1448.0	- 1
	4.1224.1482.0	1 - [x]
7	4.1220.1449.0	- 1
	4.1224.1483.0	1 - [x]
8	4.1220.1450.0	- 1
	4.1224.0140.0	1 - [x]
9	4.1220.1452.0	2 2
10	4.1220.1454.0	- 1
	4.1224.1486.0	1 - [x]
11	4.1220.1695.0	2 2
12	4.1220.1696.0	2 2
13	4.1220.1697.0	2 2
14	4.1220.1698.0	- 1
	4.1224.1481.0	1 - [x]
15	4.1220.1699.0	2 4
16	4.1220.1881.0	1 1 [L]
17	4.1220.1891.0	1 1 [R]
18	4.1220.1905.0	- 1
	4.1224.1485.0	1 - [x]
19	4.1220.1908.0	- 1
20	4.1220.1909.0	- 1
21	4.1220.1967.0	2 2
22	4.1220.1987.0	2 2
23	9.1030.0004*2	5 11 M10 DIN 985-8
24	9.1030.0012*3	42 43 M8 DIN 985-8
25	9.1030.0013*4	2 2 M12 DIN 985-8

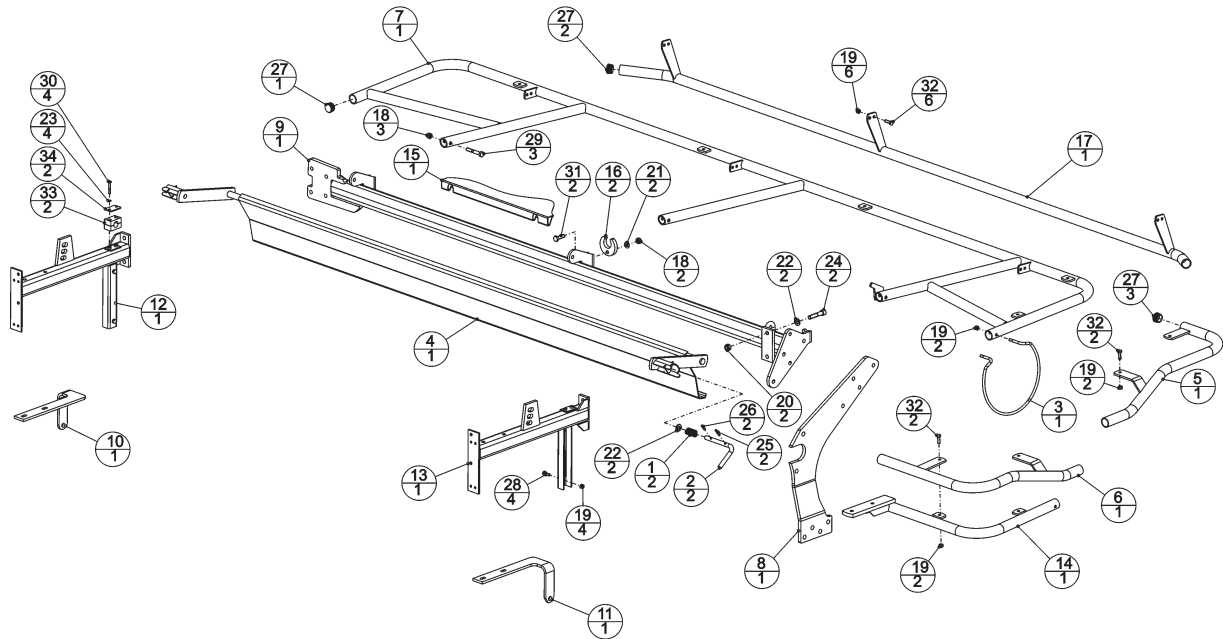
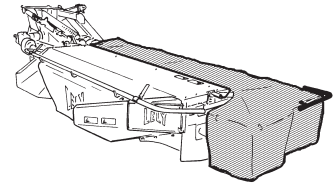
REF.	ONDERDEELNR. PART NUMBER REFERENCE TEILNUMMER	AANTAL QUANTITY QUANTITE ANZAHL
------	--	--

240 280

26	9.1032.0003*6	- 4 M10 DIN 315-G-5
27	9.1048.0004*5	24 24 A8,4 DIN 125
28	9.1048.0005*6	10 10 A8,4 DIN 9021
29	9.1048.0007*1	8 12 A10,5 DIN 125
30	9.1048.0041*0	2 2 A13 DIN 9021
31	9.1048.0067.5	3 7 A13 DIN 9021 Nylon
32	9.1049.0014.0	19 20 M8 Nylon
33	9.1049.0018.4	14 16 M10 Nylon
34	9.1051.0001.6	4 4 A8,2 DIN 6798
35	9.1051.0002.0	- 4 A10,5 DIN 6798
36	9.1051.0006.4	14 14 A6,4 DIN 6798
37	9.1057.0320.4	16 15 M8x20DIN 7991 A2-70
38	9.1058.0008*6	6 6 M8x20 DIN 603
39	9.1058.0027*4	- 4 M10x25 DIN 933-8.8
40	9.1058.0042*5	2 2 M12x50 DIN 603-8.8
41	9.1113.0013*5	8 8 M8x16 DIN 933-8.8
42	9.1113.0014*6	6 6 M8x20 DIN 933-8.8
43	9.1113.0044*1	2 2 M10x120 DIN 931-8.8
44	9.1113.0120*0	6 8 M10x30 DIN 933-8.8
45	9.1113.0128*1	13 14 M8x25 DIN 933-8.8
46	9.1113.0143*2	2 2 M10x150 DIN 931-8.8
47	9.1113.0175*6	10 10 M8x60 DIN 931-8.8
48	9.1113.0181*5	8 8 M6x50 DIN 931-8.8
49	9.1113.0184*1	6 6 M6x20 DIN 933-8.8
50	9.1137.0914.0	4 4 Cpl.
51	9.1137.0915.1	8 8
52	9.1170.0001.6	2 2 "LELY"
53	9.1170.0407.6	1 1
54	9.1170.0408.0	1 1
55	9.1170.0410.2	1 1
56	9.1170.0419.4	1 1

LELY

SPLENDIMO	type nummer type number número de type Typnummer	vanaf serienummer as from serial number après numéro de serie ab Serienummer
240 TC	4.1224.0017.1	3002225
	4.1224.0018.1	10702 - 0520
	4.1224.0019.1	10806 - 0537
	4.1224.0020.1	30000000
280 TC	4.1220.0021.1	10807 - 0501
	4.1220.0022.1	10805 - 0597
	4.1220.0023.1	10803 - 0532
	4.1220.0024.1	3000000



E228-01-00

REF.	ONDERDEELNR. PART NUMBER REFERENCE TEILNUMMER	AANTAL QUANTITY QUANTITE ANZAHL
------	--	--

240 280

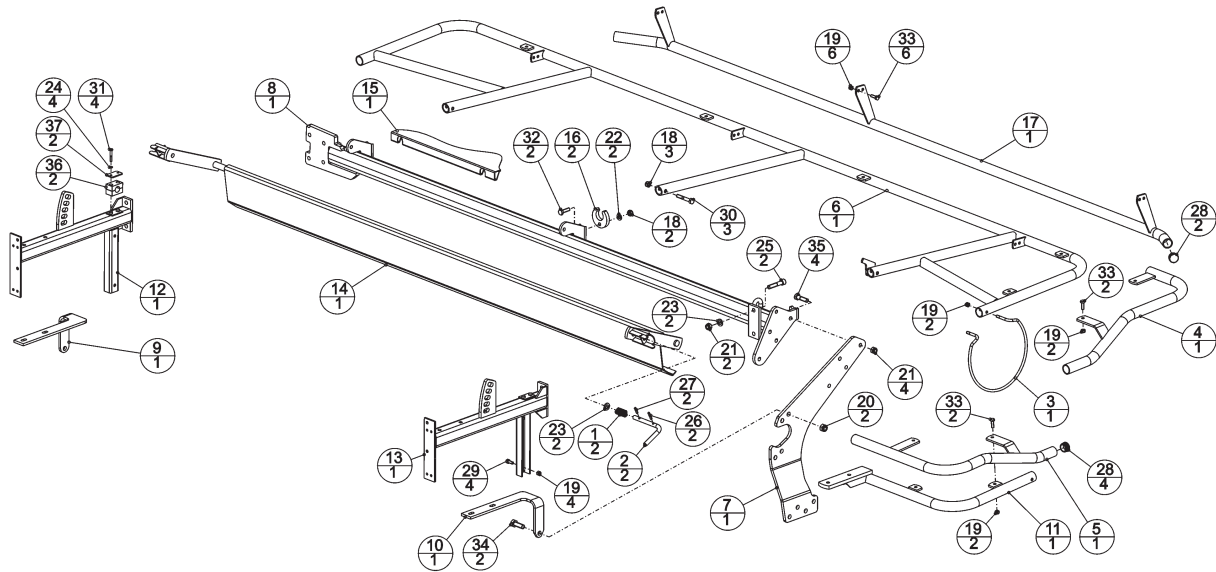
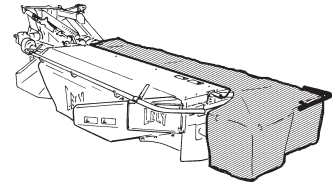
1	4.1002.0093.0	2 2
2	4.1207.0188.0	2 2
3	4.1210.1496.0	1 1
4	4.1217.0400.0	- 1
	4.1224.0351.0	1 - [x]
5	4.1220.0650.0	1 1
6	4.1220.0660.0	1 1
7	4.1220.0690.0	- 1
	4.1224.0650.0	1 - [x]
8	4.1220.0912.0	1 1 = REF. 1 Pag. 10
9	4.1220.1080.0	- 1
	4.1224.0632.0	1 - [x]
10	4.1220.1116.0	1 1
11	4.1220.1117.0	1 1
12	4.1220.1121.0	1 1 [L]
13	4.1220.1131.0	1 1 [R]
14	4.1220.1141.0	1 1
15	4.1220.1907.0	- 1
	4.1224.1484.0	1 - [x]
16	4.1225.1486.0	2 2
17	4.1253.0430.0	- 1
	4.1252.0380.0	1 - [x]
18	9.1030.0004*2	4 5 M10 DIN 985-8
19	9.1030.0012*3	16 16 M8 DIN 985-8
20	9.1030.0024*1	2 2 M12 DIN 985-10

REF.	ONDERDEELNR. PART NUMBER REFERENCE TEILNUMMER	AANTAL QUANTITY QUANTITE ANZAHL
------	--	--

21	9.1048.0007*1	2 A10,5 DIN 125 []
22	9.1048.0012*6	4 A13 DIN 125 []
23	9.1051.0006*4	4 A6,4 DIN 6798 [####]
24	9.1057.0037.1	2 M12x60 DIN 912-12.9
25	9.1070.0017.3	2 Ø6x30 DIN 1481
26	9.1070.0049.0	2 Ø6x24 DIN 1481
27	9.1108.0085.6	6 Ø32
28	9.1113.0014*6	4 M8x20 DIN933-8.8
29	9.1113.0039*3	3 M10x65 DIN 931-8.8
30	9.1113.0106*0	4 M6x40 DIN 931-8.8
31	9.1113.0117*4	2 M10x35 DIN 933-8.8
32	9.1113.0128*1	10 M8x25 DIN 933-8.8
33	9.1137.0904.4	2 Cpl.
34	9.1137.0905.5	2

LELY

SPLENDIMO	type nummer type number numéro de type Typnummer	vanaf serienummer as from serial number après numéro de serie ab Seriennummer
240 TC	4.1224.0040.1	3000768
280 TC	4.1220.9000.2	3000761



E228-02-00

REF.	ONDERDEELNR. PART NUMBER REFERENCE TEILNUMMER	AANTAL QUANTITY QUANTITE ANZAHL
------	--	--

240 280

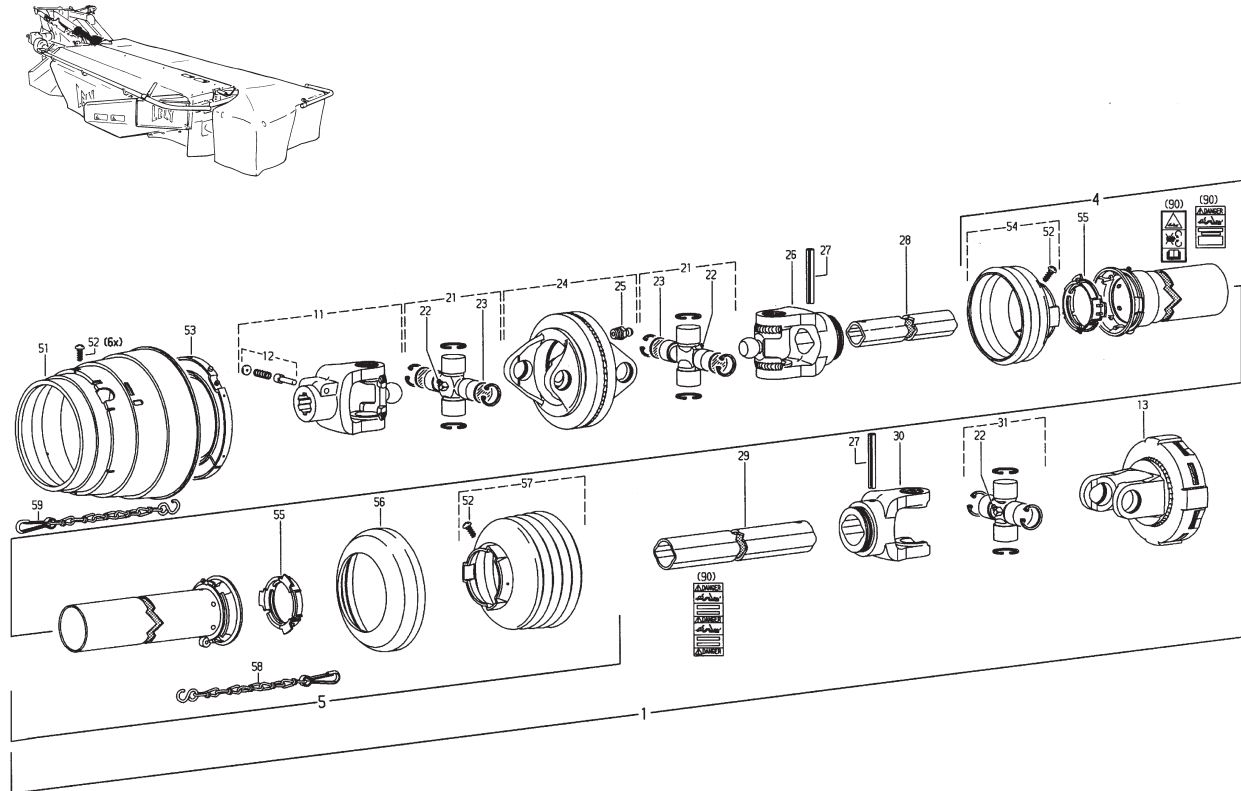
1	4.1002.0093.0	2 2
2	4.1207.0188.0	2 2
3	4.1210.1496.0	1 1
4	4.1220.0650.0	1 1
5	4.1220.0660.0	1 1
6	4.1220.0690.0	- 1
	4.1224.0650.0	1 - [x]
7	4.1220.0913.0	1 1 = REF. 1 Pag. 10
8	4.1220.1080.0	- 1
	4.1224.0632.0	1 - [x]
9	4.1220.1116.0	1 1
10	4.1220.1117.0	1 1
11	4.1220.1141.0	1 1
12	4.1220.1640.0	1 1 [L]
13	4.1220.1650.0	1 1 [R]
14	4.1220.1660.0	- 1
	4.1224.0690.0	1 - [x]
15	4.1220.1907.0	- 1
	4.1224.1484.0	1 - [x]
16	4.1225.1486.0	2 2
17	4.1253.0430.0	- 1
	4.1252.0380.0	1 - [x]
18	9.1030.0004*2	4 5 M10 DIN 985-8
19	9.1030.0012*3	16 16 M8 DIN 985-8

REF.	ONDERDEELNR. PART NUMBER REFERENCE TEILNUMMER	AANTAL QUANTITY QUANTITE ANZAHL
------	--	--

20	9.1030.0015*6	2 M14 DIN 985.6
21	9.1030.0024*1	6 M12 DIN 985-10
22	9.1048.0007*1	2 A10,5 DIN 125 []
23	9.1048.0012*6	4 A13 DIN 125 []
24	9.1051.0006*4	4 A6,4 DIN 6798 [#####]
25	9.1057.0037.1	2 M12x60 DIN 912-12.9
26	9.1070.0017.3	2 Ø6x30 DIN 1481
27	9.1070.0049.0	2 Ø6x24 DIN 1481
28	9.1108.0085.6	6 Ø32
29	9.1113.0014*6	4 M8x20 DIN 933-8.8
30	9.1113.0039*3	3 M10x65 DIN 931-8.8
31	9.1113.0106*0	4 M6x40 DIN 931-8.8
32	9.1113.0117*4	2 M10x35 DIN 933-8.8
33	9.1113.0128*1	10 M8x25 DIN 933-8.8
34	9.1113.0142*1	2 M14x40 DIN 933-8.8
35	9.1113.0252*6	4 M12x45 DIN 931-10.9
36	9.1137.0904.4	2 Cpl.
37	9.1137.0905.5	2

LELY

SPLENDIMO	type number type number numéro de type Typnummer	vanaf serienummer as from serial number après numéro de serie ab Seriennummer	SPLENDIMO	type number type number numéro de type Typnummer	vanaf serienummer as from serial number après numéro de serie ab Seriennummer
240 TC	4.1224.0017.1	3002225	280 TC	4.1220.0021.1	10807 - 0501
	4.1224.0018.1	10702 - 0520		4.1220.0022.1	10805 - 0597
	4.1224.0019.1	10806 - 0537		4.1220.0023.1	10803 - 0532
	4.1224.0020.1	3000000		4.1220.0024.1	3000000
	4.1224.0040.1	3000768		4.1220.9000.2	3000761



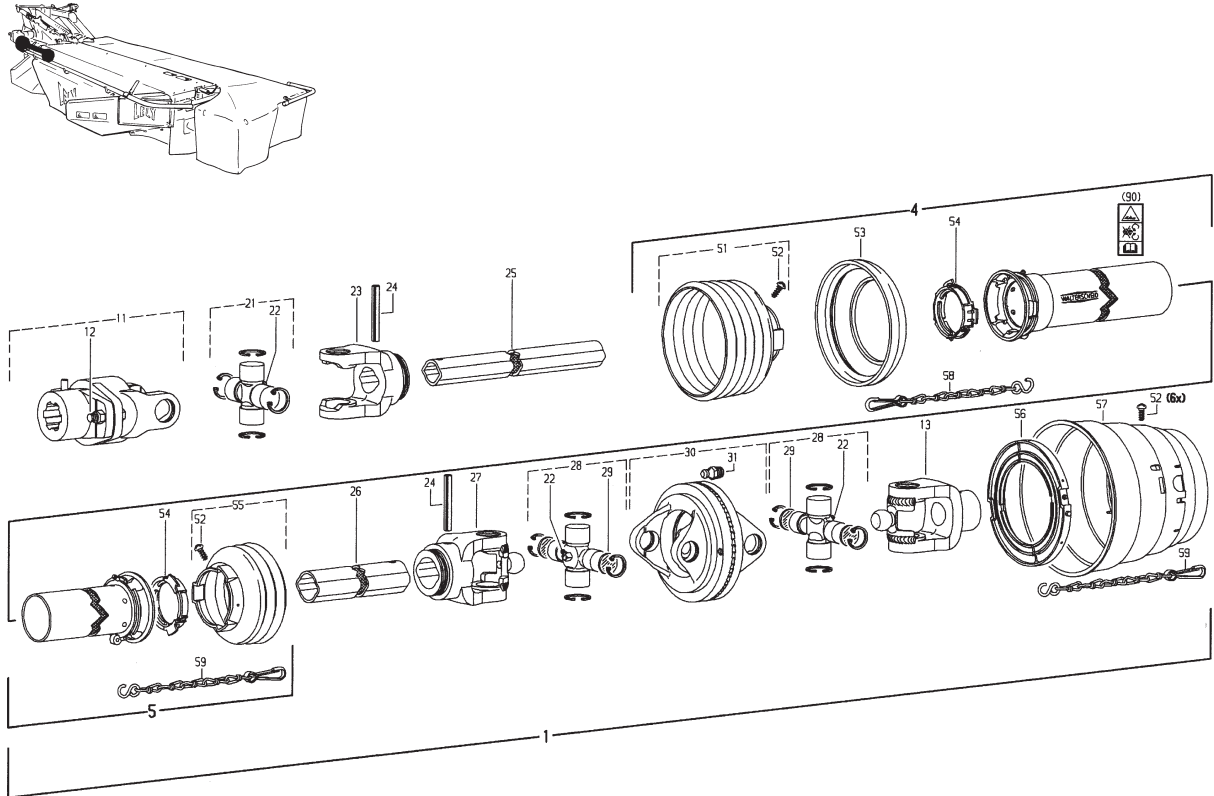
Ew007-02-01

REF.	ONDERDEELNR. PART NUMBER REFERENCE TEILNUMMER	AANTAL QUANTITY QUANTITE ANZAHL	
1	9.1154.0179.4	1	WWE2280-SD15SW-610-K92 = REF. 11-90
4	85.132	1	SCH15SW-A355-RP3
5	85.134	1	SDH15SW-J350-RP12-K
11	20.10.810	1	AG2280-1.3/8" (6)
12	33.91.07	1	AGRASET 101
13	56.113.16	1	K92-2200-1.3/8" (6) M= 750Nm
21	20.06.00	2	WW2280
22	63.27.00	3	BM8x1
23	20.06.70	4	21,95x2
24	20.91.05	1	DOPG2280
25	63.12.01	1	AM8x1
26	20.11.810	1	RG2280-Ov
27	9.1070.0028.0	2	Ø10x60 DIN 1481
28	75.11.96	1	OvGA-420
29	75.16.16	1	1G-410
30	20.12.00	1	RG 2200-1
31	20.00.00	1	
51	85.00.30	1	SD05/15SW-2280
52	60.15.00	8	4x10
53	82.83.12	1	SD05/15-2280
54	85.14.306	1	n= 3
55	82.83.06	2	

REF.	ONDERDEELNR. PART NUMBER REFERENCE TEILNUMMER	AANTAL QUANTITY QUANTITE ANZAHL	
56	82.85.00	1	
57	85.15.35	1	n= 5
58	82.36.03	1	400
59	82.36.08	1	600
90	11.87.45	1	

LELY

SPLENDIMO	type number type number numéro de type Typnummer	vanaf serienummer as from serial number après numéro de serie ab Seriennummer	SPLENDIMO	type number type number numéro de type Typnummer	vanaf serienummer as from serial number après numéro de serie ab Seriennummer
240 TC	4.1224.0017.1	3002225	280 TC	4.1220.0021.1	10807 - 0501
	4.1224.0018.1	10702 - 0520		4.1220.0022.1	10805 - 0597
	4.1224.0019.1	10806 - 0537		4.1220.0023.1	10803 - 0532
	4.1224.0020.1	30000000		4.1220.0024.1	3000000
	4.1224.0040.1	3000768		4.1220.9000.2	3000761



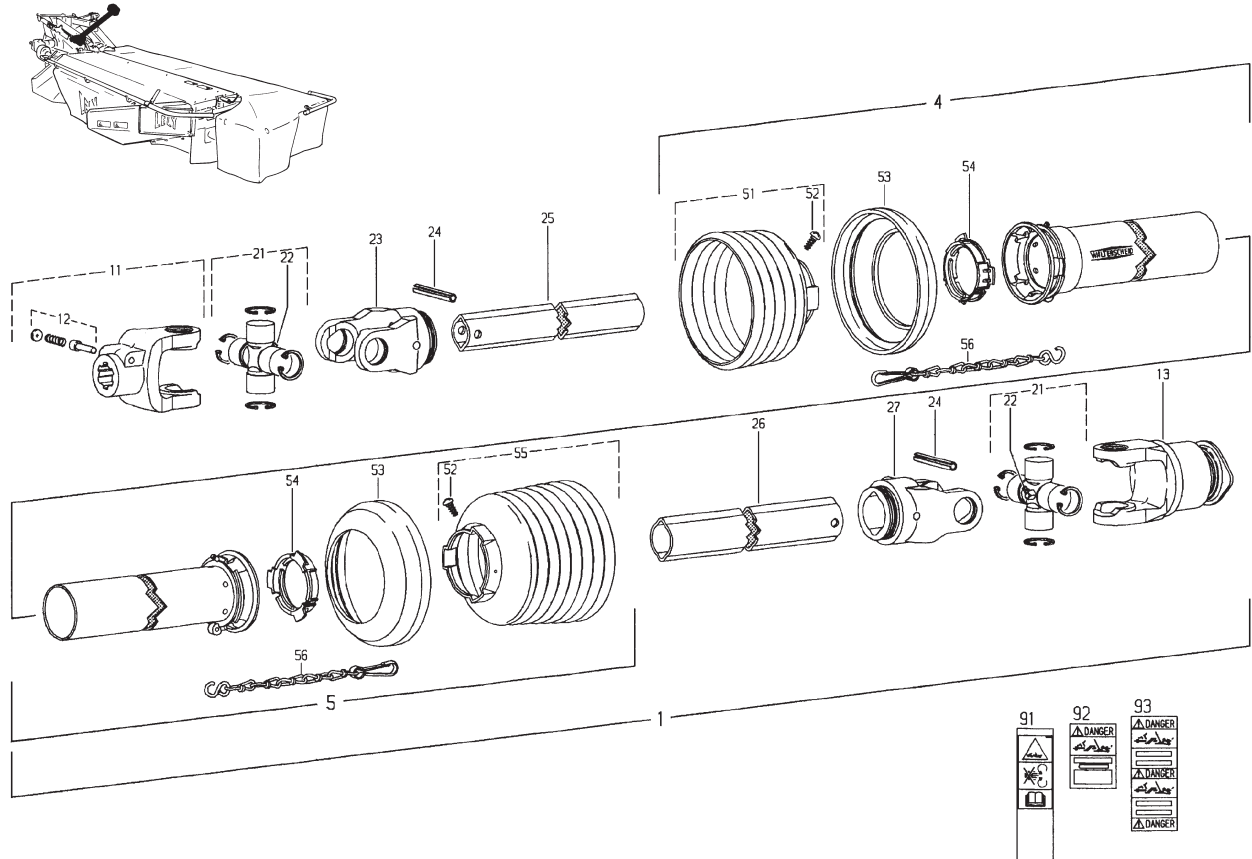
Ew008-02-00

REF.	ONDERDEELNR. PART NUMBER REFERENCE TEILNUMMER	AANTAL QUANTITY QUANTITE ANZAHL	
1	9.1154.0180.5	1	WWE2280-SD15SW-710-K61/1 = REF. 11-90
4	85.135	1	SDH15SW-A455-RP12-K
5	85.131	1	SCH15SW-J450-RP3-K
11	57.100.12	1	K61/1-2200-1.1/8" (6)ST
12	9.1113.0205*1	1	M8x35 DIN 933-8.8
13	20.15.848	1	NG2280-Ø35 M= 910Nm
21	20.00.00	1	
22	63.27.00	3	BM8x1
23	20.11.00	1	RG 2200-Ov
24	61.05.04	2	Ø10x65 DIN 1481
25	75.11.96	1	OvGA-520
26	75.16.16	1	1G-510
27	20.12.810	1	RG 2280-1
28	20.06.00	2	WW2280
29	20.06.70	4	21,95x2
30	20.91.05	1	DOPG2280
31	63.12.01	1	AM8x1 DIN71412
51	85.15.36	1	n= 6
52	60.15.00	8	4x10
53	82.85.00	1	
54	82.83.06	2	
55	85.14.306	1	n= 3

REF.	ONDERDEELNR. PART NUMBER REFERENCE TEILNUMMER	AANTAL QUANTITY QUANTITE ANZAHL	
56	82.83.12	1	SD05/15-2280
57	85.00.30	1	SD05/15SW-2280
58	82.36.03	1	400
59	82.36.08	2	600
90	11.87.45	1	

LELY

SPLENDIMO	type number type number numéro de type Typnummer	vanaf serienummer as from serial number après numéro de serie ab Seriennummer	SPLENDIMO	type number type number numéro de type Typnummer	vanaf serienummer as from serial number après numéro de serie ab Seriennummer
240 TC	4.1224.0017.1	3002225	280 TC	4.1220.0021.1	10807 - 0501
	4.1224.0018.1	10702 - 0520		4.1220.0022.1	10805 - 0597
	4.1224.0019.1	10806 - 0537		4.1220.0023.1	10803 - 0532
	4.1224.0020.1	3000000		4.1220.0024.1	3000000
	4.1224.0040.1	3000768		4.1220.9000.2	3000761



Ew001-06-02

REF.	ONDERDEELNR. PART NUMBER REFERENCE TEILNUMMER	AANTAL QUANTITY QUANTITE ANZAHL	
1	9.1154.0083.6	1	W2400-SD25SW-860-F5/1R = REF. 11-93
4	85.235	1	SDH25SW-A645-RP7-K
5	85.234	1	SDH25SW-J640-RP12-K
11	35.10.00	1	AG2400-1.3/8" (6)
12	33.91.07	1	AGRASET 101
13	56.144.40	1	F5/1R-2400-1.3/8" (6) ZV
21	35.00.00	2	
22	63.27.00	2	BM8x1
23	35.13.00	1	RG2400-1b
24	61.05.08	2	Ø10x80 DIN 1481
25	75.25.95	1	1bGA-740
26	75.36.15	1	2aG-715
27	35.14.00	1	RG2400-2a
51	85.25.36	1	n= 6
52	60.15.00	2	4x10
53	82.85.00	2	
54	82.83.04	2	
55	85.25.38	1	n= 8
56	82.36.03	2	400
91	16.61.175	1	
92	16.61.163	1	
93	16.61.162	1	

REF.	ONDERDEELNR. PART NUMBER REFERENCE TEILNUMMER	AANTAL QUANTITY QUANTITE ANZAHL	
91			
92			
93			