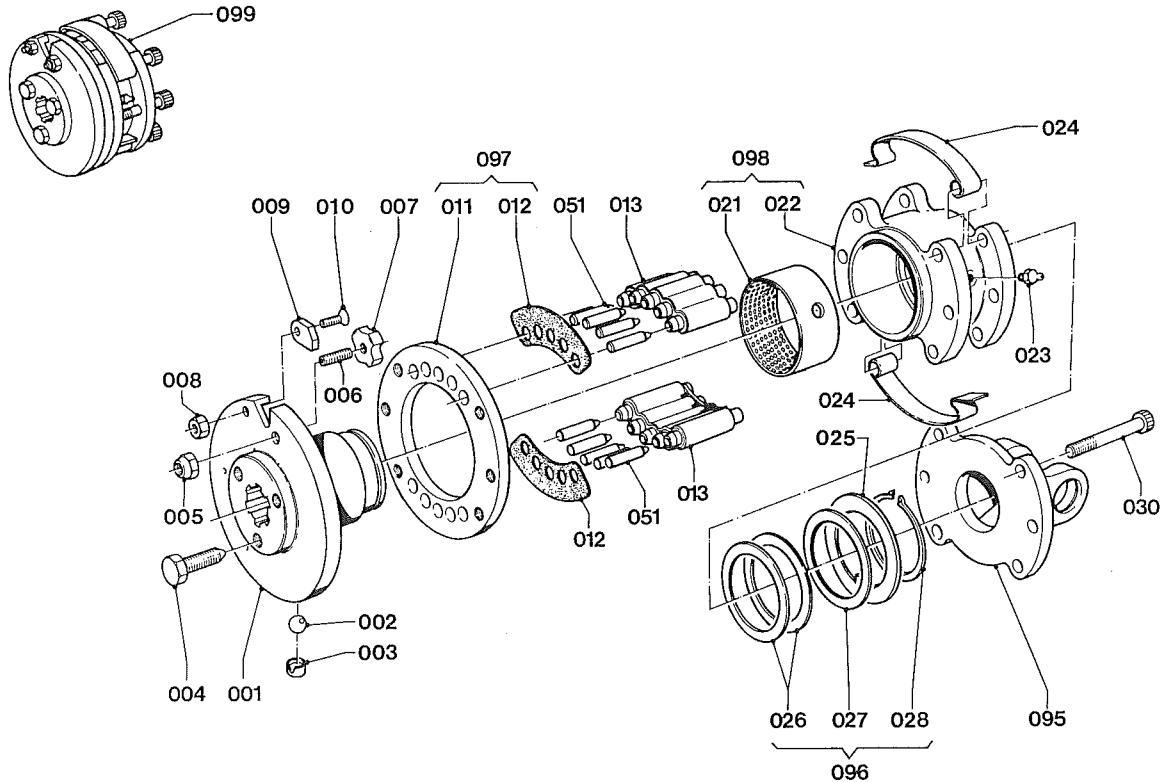
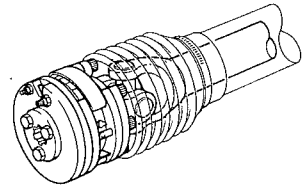


LELY

LELYMATIC	type number type number numéro de type Typnummer	vanaf serienummer as from serial number après numéro de serie ab Seriennummer
BA.8-1.3/8" (6) 1/m through jusqu' à bis zu	Zie pagina 02 See page 02 Voir page 02 Siehe Seite 02	921 - 0501 921 - 0501 921 - 0501 921 - 0501
BA.10-1.3/8" (21)		



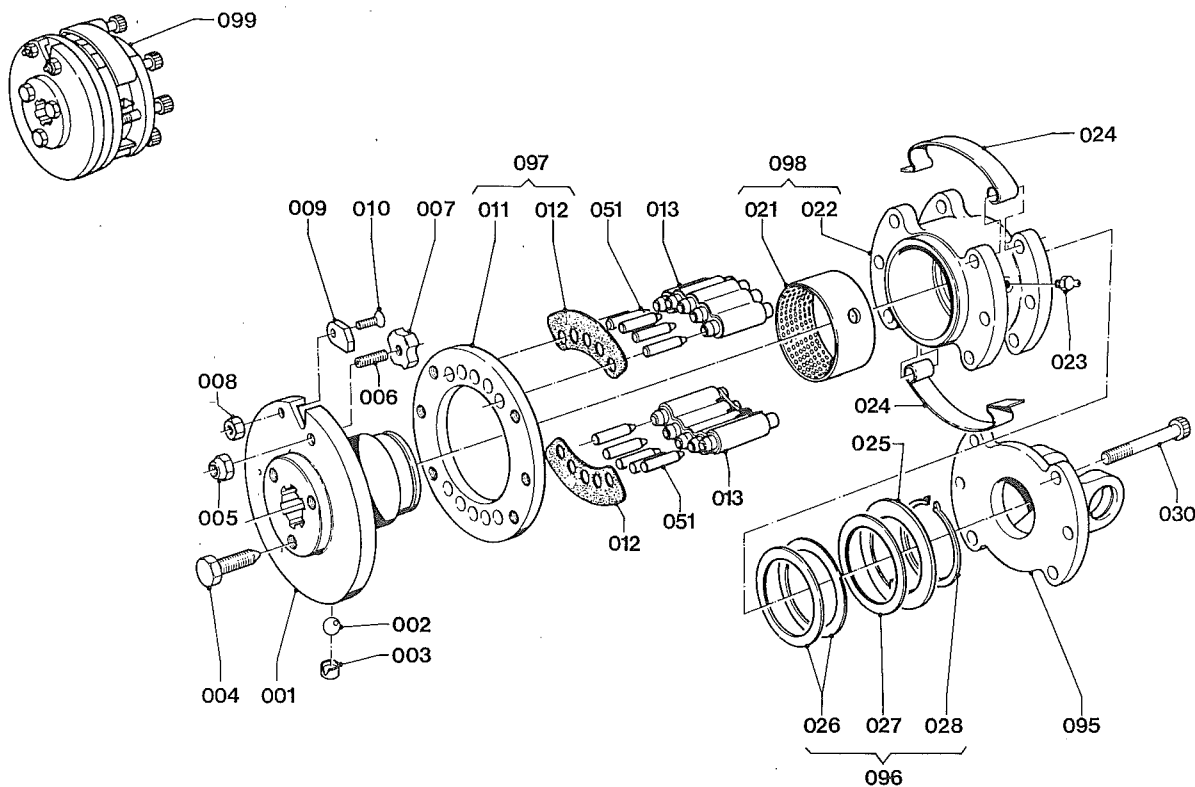
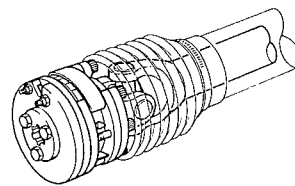
D01.04

REF.	ONDERDEELNR. PART NUMBER REFERENCE TEILNUMMER	AANTAL QUANTITY QUANTITE ANZAHL	
001	0.9001.1078.0	1	1.3/8" (6)
	0.9001.1297.0	1	1.3/8" (21)
002	9.1021.0002.2	3	Ø1/2"
003	0.9001.1086.0	3	
004	0.9001.1080.0	3	
005	9.1030.0004*2	1	M10 DIN 985-8
006	9.1063.0009.2	1	M10x30 DIN 913-45H
007	0.9001.1097.0	1	
008	9.1030.0011*2	1	M6 DIN 985-8
009	0.9001.1093.0	1	8 mm
	0.9001.1146.0	1	9 mm
	0.9001.1247.0	1	10 mm
010	9.1060.0017*6	1	M6x25 DIN 963-5.8
011	[#]	1	
012	0.9001.1081.0	2	
013	0.9001.1010.0	2	Cpl.
021	9.1022.0011.3	1	
022	[#]	1	
023	9.1068.0007*2	1	AM8x1,25 DIN 71412
024	0.9001.1085.0	2	
025	0.9001.1094.0	1	
026	9.1093.0012.3	~	60x75x0,1 DIN 988
	9.1093.0013.4	~	60x75x0,3 DIN 988
	9.1093.0014.5	~	60x75x0,5 DIN 988
027	9.1093.0057.6	1	60x75x1,0 DIN 988

REF.	ONDERDEELNR. PART NUMBER REFERENCE TEILNUMMER	AANTAL QUANTITY QUANTITE ANZAHL	
028	9.1119.0023.2	1	60x3,00 DIN 471
	9.1119.0012.5	(1)	60x2,00 DIN 471
030	9.1057.0020*5	6	M12x90 DIN 912-12.9
051	0.9001.1090.1	(= 10x)	Ø8-0
	0.9001.1091.1	(= 10x)	Ø8-1
	0.9001.1092.1	(= 10x)	Ø8-2
	0.9001.1147.1	(= 10x)	Ø9-0
	0.9001.1148.1	(= 10x)	Ø9-1
	0.9001.1149.1	(= 10x)	Ø9-2
	0.9001.1248.1	(= 10x)	Ø10-0
	0.9001.1249.1	(= 10x)	Ø10-1
095	0.9001.1083.0	1	W2400
	0.9001.1198.0	1	W2500
096	0.9001.1077.0	1	= REF. 026-028 [D+D]
097	0.9001.1084.1	1	= REF. 011+012 8 mm
	0.9001.1144.1	1	= REF. 011+012 9 mm
	0.9001.1244.1	1	= REF. 011+012 10 mm
098	0.9001.1095.2	1	= REF. 021+022

LELY

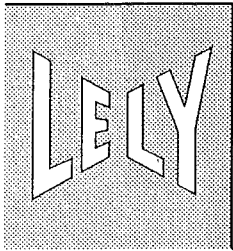
LELYMATIC	type number type number numéro de type Typnummer	vanaf serienummer as from serial number après numéro de série ab Seriennummer
BA.8-1.3/8" (6) t/m through jusqu' à bis zu	Onderaan pag. On foot of page En bas de page Am Seitenfuss	921 - 0501 921 - 0501 921 - 0501 921 - 0501
BA.10-1.3/8" (21)		



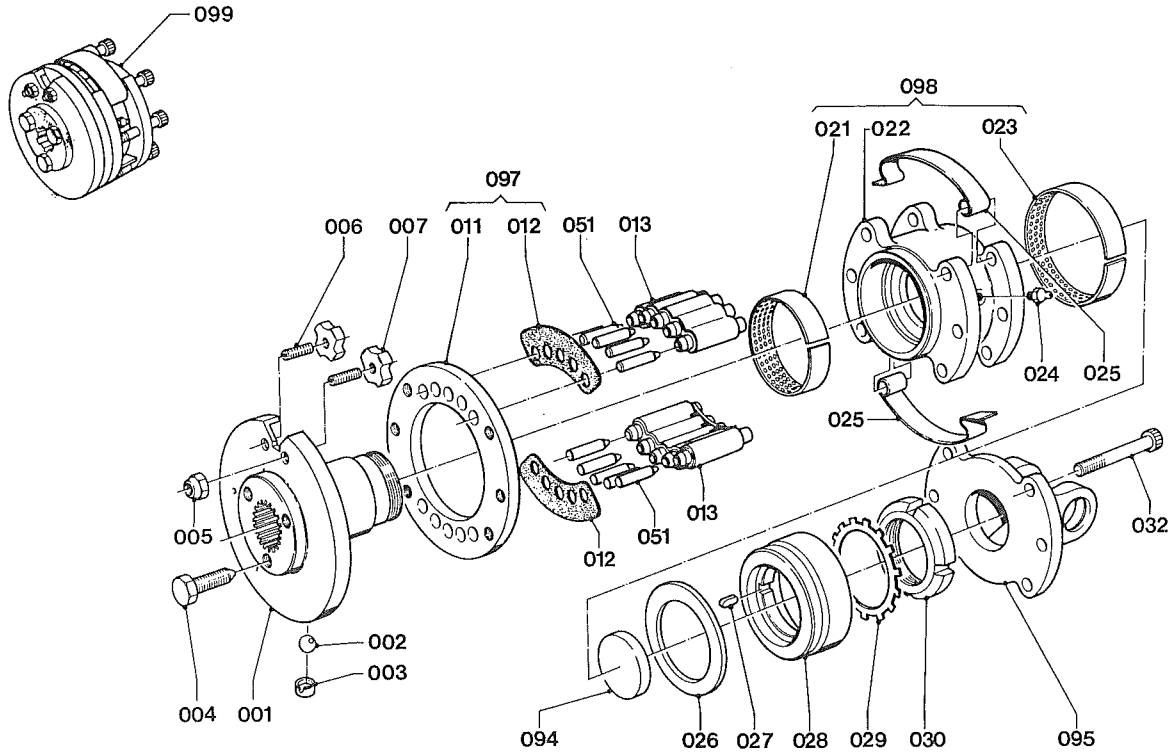
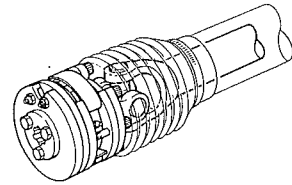
D01.04

REF.	ONDERDEELNR. PART NUMBER REFERENCE TEILNUMMER	AANTAL QUANTITY QUANTITE ANZAHL	type number type number numéro de type Typnummer	
099	0.9001.1050.0 = REF. 001-030 BA.8-1.3/8" (6) W2400	1	0.9001.1050. 0.9001.1050.0 0.9001.1050.1 0.9001.1050.2	
099	0.9001.1120.0 = REF. 001-030 BA.9-1.3/8" (6) W2400	1	0.9001.1102. 0.9001.1102.0 0.9001.1102.2	(Ø9-1) (Ø9-1) (Ø9-1)
			0.9001.1120. 0.9001.1120.0 0.9001.1120.1 0.9001.1120.2	
099	0.9001.1170.0 = REF. 001-030 BA.8-1.3/8" (6) W2500	1	0.9001.1151. 0.9001.1151.0 0.9001.1151.2	(Ø8-0) (Ø8-0) (Ø8-0)
			0.9001.1170. 0.9001.1170.0 0.9001.1170.2	
099	0.9001.1270.0 = REF. 001-030 BA.8-1.3/8" (21) W2500	1	0.9001.1250. 0.9001.1250.0 0.9001.1250.2	(Ø8-1) (Ø8-0) (Ø8-0)
			0.9001.1252. 0.9001.1252.0 0.9001.1252.2	(Ø8-1) (Ø8-1) (Ø8-1)
			0.9001.1270. 0.9001.1270.0 0.9001.1270.1 0.9001.1270.2	

REF.	ONDERDEELNR. PART NUMBER REFERENCE TEILNUMMER	AANTAL QUANTITY QUANTITE ANZAHL	type number type number numéro de type Typnummer	
099	0.9001.1520.0 = REF. 001-030 BA.9-1.3/8" (6) W2500	1	0.9001.1520. 0.9001.1520.0 0.9001.1520.2	
099	0.9001.1320.0 = REF. 001-030 BA.9-1.3/8" (21) W2500	1	0.9001.1301. 0.9001.1301.0 0.9001.1301.2	(Ø9-0) (Ø9-0) (Ø9-0)
			0.9001.1302. 0.9001.1302.0 0.9001.1302.2	(Ø9-1) (Ø9-1) (Ø9-1)
			0.9001.1320. 0.9001.1320.0 0.9001.1320.1 0.9001.1320.2	
099	0.9001.1220.0 = REF. 001-030 BA.10-1.3/8" (6) W2500	1	0.9001.1202. 0.9001.1202.0 0.9001.1202.2	(Ø10-1) (Ø10-1) (Ø10-1)
			0.9001.1220. 0.9001.1220.0 0.9001.1220.1 0.9001.1220.2	
099	0.9001.1370.0 = REF. 001-030 BA.10-1.3/8" (21) W2500	1	0.9001.1352. 0.9001.1352.0 0.9001.1352.2	(Ø10-1) (Ø10-1) (Ø10-1)
			0.9001.1370. 0.9001.1370.0 0.9001.1370.1 0.9001.1370.2	



LELYMATIC	type number type number numéro de type Typnummer	vanaf serienummer as from serial number après numéro de serie ab Seriennummer
BA.9-1.3/8" (21)	0.9001.1630.0	961 - 0501
	0.9001.1630.2	970 - 0501
	0.9001.1630.1	1001 - 0501
BA.10-1.3/8" (21)	0.9001.1610.0	961 - 0501
	0.9001.1610.2	970 - 0501



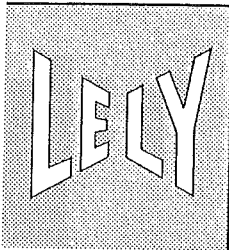
D05.02

REF.	ONDERDEELNR. PART NUMBER REFERENCE TEILNUMMER	AANTAL QUANTITY QUANTITE ANZAHL	
------	--	--	--

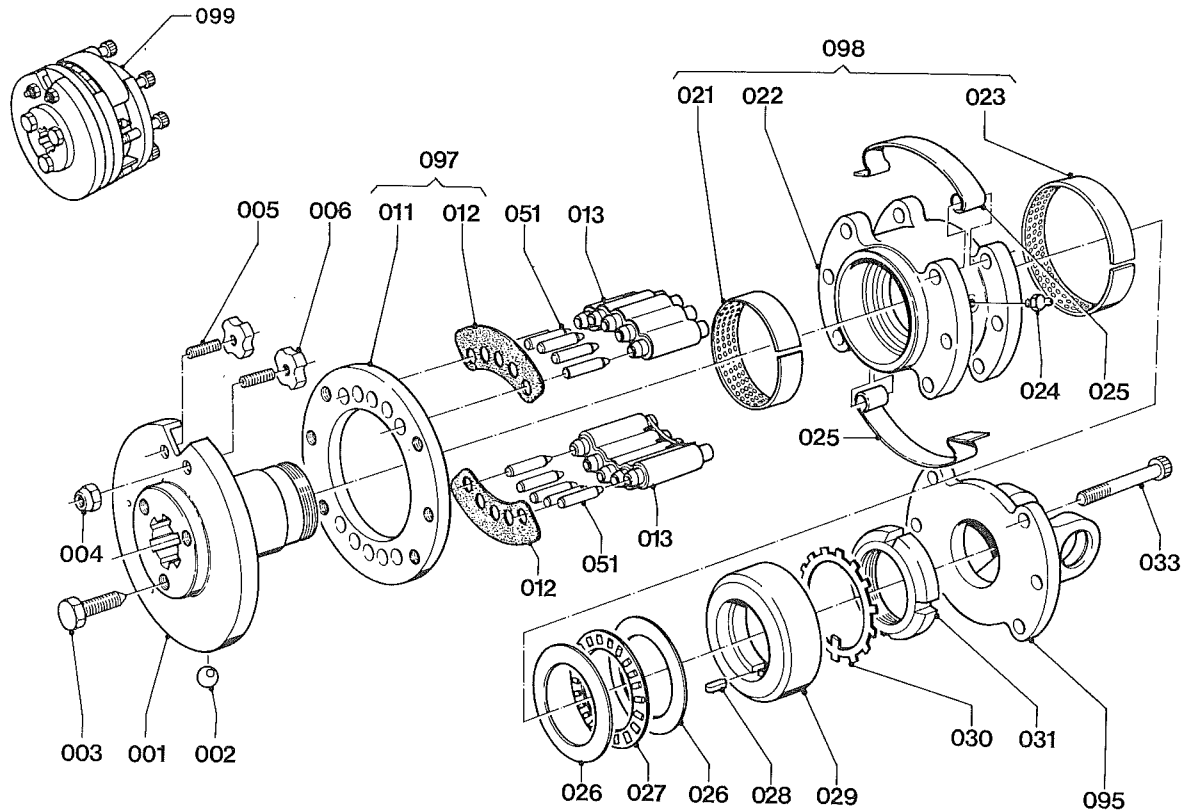
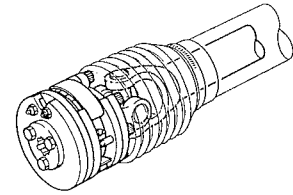
001	0.9001.1625.0	1	1.3/8" (21)
002	9.1021.0002.2	3	Ø1/2"
003	0.9001.1086.0	3	
004	0.9001.1080.0	3	
005	9.1030.0004*2	2	M10 DIN 985-8
006	9.1063.0009.2	2	M10x30 DIN 913-45H
007	0.9001.1649.0	2	9 mm
	0.9001.1624.0	2	10 mm
011	[#]	1	
012	0.9001.1081.0	2	
013	0.9001.1010.0	2	Cpl.
021	0.9001.1626.0	1	
022	[#]	1	
023	0.9001.1628.0	1	
024	9.1068.0007*2	1	AM8x1,25 DIN 71412
025	0.9001.1085.0	2	
026	9.1007.0005.5	1	
027	9.1071.0041.5	1	A6x4x12 DIN 6885
028	0.9001.1629.0	1	
029	9.1118.0004.5	1	MB 9
030	9.1035.0004.4	1	M45x1,5 KM9
032	9.1057.0020*5	6	M12x90 DIN 912-12.9

REF.	ONDERDEELNR. PART NUMBER REFERENCE TEILNUMMER	AANTAL QUANTITY QUANTITE ANZAHL	
------	--	--	--

051	0.9001.1147.1	(= 10x)	Ø9-0 LT-35 1000/min.
	0.9001.1148.1	(= 10x)	Ø9-1 LT-45/55 1000/min.
	0.9001.1149.1	(= 10x)	Ø9-2 LT-35 540/min.
	0.9001.1248.1	(= 10x)	Ø10-0
	0.9001.1249.1	(= 10x)	Ø10-1
094	9.1108.0069.4	1	
095	0.9001.1198.0	1	W2500
097	0.9001.1144.1	1	= REF. 011+012 9 mm
	0.9001.1244.1	1	= REF. 011+012 10 mm
098	0.9001.1627.2	1	= REF. 021-023
099	0.9001.1630.0	1	= REF. 001-032 BA.9-1.3/8" (21) W2500
099	0.9001.1610.0	1	= REF. 001-032 BA.10-1.3/8" (21) W2500



LELYMATIC	type number type number numéro de type Typnummer	vanaf serienummer as from serial number après numéro de série ab Seriennummer
BA.9-1.3/4" (6)	0.9001.1540.0	948 - 0501
	0.9001.1540.2	970 - 0501
	0.9001.1540.1	1001 - 0501



D02.03

REF.	ONDERDEELNR. PART NUMBER REFERENCE TEILNUMMER	AANTAL QUANTITY QUANTITE ANZAHL	
------	--	--	--

001	0.9001.1586.0	1	1.3/4" (6)
002	9.1021.0005.5	3	Ø16 mm
003	0.9001.1080.0	3	
004	9.1030.0004*2	2	M10 DIN 985-8
005	9.1063.0009.2	2	M10x30 DIN 913-45H
006	0.9001.1579.0	2	
011	[#]	1	
012	0.9001.1587.0	2	
013	0.9001.1550.0	2	Cpl.
021	0.9001.1580.0	1	
022	[#]	1	
023	0.9001.1581.0	1	
024	9.1068.0007*2	1	AM8x1,25 DIN 71412
025	0.9001.1588.0	2	
026	9.1007.0007.0	2	XWA 659001
027	9.1007.0006.6	1	XRK 659003
028	9.1071.0043.0	1	A8x5x12 DIN 6885
029	0.9001.1583.0	1	
030	9.1118.0010.4	1	MB 12
031	9.1035.0008.1	1	M60x2,0 KM12
033	9.1057.0020*5	6	M12x90 DIN 912-12.9

REF.	ONDERDEELNR. PART NUMBER REFERENCE TEILNUMMER	AANTAL QUANTITY QUANTITE ANZAHL	
------	--	--	--

051	0.9001.1147.1	(= 10x)	Ø9-0
	0.9001.1148.1	(= 10x)	Ø9-1
	0.9001.1149.1	(= 10x)	Ø9-2
			LT-55 1000/min.
095	0.9001.1589.0	1	W2600
097	0.9001.1585.1	1	= REF. 011+012 9 mm
098	0.9001.1584.2	1	= REF. 021-023
099	0.9001.1540.0	1	= REF. 001-033 BA.9-1.3/4" (6) W2600