

Series 2000  
**Spare Parts Catalogue**  
KETO-51 LD



Publ: Keto-51-002

Date: 10/10/03

No: \_\_\_\_\_ Date: \_\_\_\_\_



<b>Preface .....</b>	<b>11</b>
<b>Frame.....</b>	<b>13</b>
Frame shafts assy .....	14
Reversing wheel.....	16
Thickness indicator (EPEC).....	18
Measuring wheel .....	20
Covers assy .....	22
<b>Tilt.....</b>	<b>25</b>
Tilt.....	26
Tilt cylinder, double acting .....	28
OMH-400 Hydraulic motor for tilt .....	30
<b>Tower and tracks.....</b>	<b>33</b>
Tower and tracks .....	34
Track and swing shaft .....	36
Track cylinder .....	38
Hydraulic motor Danfoss OMSU 200/K assy version 2..	40
Track measuring.....	42
Hydraulic motor Danfoss OMSU 200/K verion 2 .....	44
Hydraulic motor Danfoss OMSU 200/K versio 3.....	46
Tracks.....	48
Tracks.....	50
<b>Saw casing .....</b>	<b>53</b>
Saw casing.....	54
Saw cylinder.....	56
Saw motor and swing .....	58
Hydraulic motor Volvo F11-10.....	60
<b>Delimiting knives .....</b>	<b>63</b>
Delimiting knives .....	64
Knife cylinder .....	66
Back knives .....	68
<b>Valve blocks .....</b>	<b>71</b>
Valve blocks (big block) .....	72
Valve blocks (big block).....	74
Valve blocks (small and medium blocks) .....	76
Block hose piping.....	78
<b>Other spare parts.....</b>	<b>81</b>
Saw bars lubrication pump.....	82
Saw and track lubrication controllblock .....	84
Safety stickers .....	86



## SAFETY INSTRUCTIONS

Read this manual before taking the harvester into use.

Working with a harvester involves great safety risks. These instructions involve main points to understand and avoid safety risks.

The high pressure hydraulics produce great forces, which transfer large masses. They can cause dangerous situations to the operator and other persons, machines and other objects nearby.

### THE SAW IS DANGEROUS

The saw is made efficient so that trees can safely be felled. The saw chain has a speed of 35 m/s. By freerunning the speed is even much higher. **SPLINTERS FROM A SNAPPING CHAIN HAVE THE SAME KINETIC ENERGY AS A PISTOL BULLET.** Splinters have caused injuries at distance of even 100 meters from the machine.



#### **Varoitus**

*NEVER USE THE SAW SO THAT THE SAWBAR IS DIRECTED TOWARDS THE CAB OR OTHER PERSONS.*



#### **Varoitus**

*BESIDES THE DANGER OF SPLINTERS AN UNBROKEN RUNNING SAW IS ALSO DANGEROUS.*



#### **Varoitus**

*NEVER TAKE SUCH A POSITION THAT YOU MIGHT GET HIT BY THE SAW.*

### **DURING MAINTENANCE AND ADJUSTMENT, WATCH OUT FOR MOVING PARTS ON THE HARVESTER.**

Never go to such a place, where you might get caught between the tracks or the delimiting knives. Always keep in mind that although the engine and the hydraulic pump have stopped, the action of the hydraulic valves can release the hydraulic pressure and cause movements. Always switch off the engine before you approach the harvester.

Empty the accumulator before service. Do not open joints that are pressurized.

If you have to carry out service or adjustments with the engine in operation, remove the chain and the sawbar before servicing.

**SAFETY PRECAUTIONS WHILE WORKING.**

BEFORE SERVICE AND MAINTENANCE READ FIRST THE OPERATION- AND SERVICE BOOK.

**DANGER ZONE**

- The danger range of a harvester in operation is twice the length of the tree to be felled in every direction. Persons are not safe until 70 meters from the harvester.

**THE TREE MIGHT FALL IN THE WRONG DIRECTION**

- The operator and the spectators always have to be prepared for the tree falling in another direction than intended. There are many reasons why the tree falls in a wrong direction, for instance.
- The operator makes a misjudgment of the weight of the tree, the wind direction or force, the length of the tree or the natural inclination of the tree.
- The operator weights the loader wrongly or pushes wrong buttons by mistake.
- If the sawing fails, and normal felling of the tree has to be interrupted, the wind can fell the tree later on.
- If a failure appears on the harvester preventing the intended motion. For instance a hydraulic hose brakes, the harvester can get some electrical- or valve failure, causing the harvester not to obey given order.
- A sudden shift of wind changes the direction of the tree.
- If the snow only falls on one side of the tree, the centre of gravity is suddenly changed.
- The tree changes direction, when hitting another tree.

**VEHICLE STABILITY**

- Ensure that the vehicle is on a sufficiently solid ground. Also consider the inclination of the machine.

**SHUT DOWN THE MACHINE WHEN A FAILURE OCCURS**

- Never start repair before the machine has been shut down.

**NOTE THE TYPE OF THE BASE MACHINE**

- If the base machine is an excavator or a tractor check the safety of the cabin.
- The glasses of the cabin and other construction may not hold suddenly stresses as good as in a base machine which has been built as a forest machine.

**LOCK OUT FOR HIDDEN FORCES**

- Take into consideration the forces of for instance a tree strained behind another one. When felling the tree, the top will be released from behind the another tree, and the tree can suddenly turn.

### NOTE THE DISTANCE FROM HIGH TENSION LINES

- Do not go too near the high tension lines.
- The high tension lines high from the ground:

Voltage	Height
380/220 V	about 4,5m
6-45 V	about 5 m
110 KV /or more	about 6m

Notice that snow and ice can load high tension lines, so that they can be even lower than these heights.

### HANDLING LIQUIDS

- Follow the manufactures instructions.

Liquids which are used in a harvester:

- Oil
- Hydraulic liquid
- Urea liquid (Optional)
- Colour marking liquid (Optional)

### 0.1 SAFETY STICKERS

The owner and/or the employer has a duty to see that the stickers below are always attached to the machine. You can order new stickers as a spare part. Below are the explanation of the stickers.

The stickers are placed inside the cover of the hydraulblock because of weak wearability.

Figure 1

Use protective gloves during maintenance of the sawbar.



Figure 2

Warning of pressure in the pressure accumulator.





Figure 3 & 4

Avoid the hot surface and read the service instructions before maintenance. Risk of fingers getting crushed during maintenance.



Figure 5

Risk of falling load. Keep away from the machine.





# 1. Preface

The following signs/names are used in this publication:

Compl.=Complete

NS=Not saw side

SS=Saw side

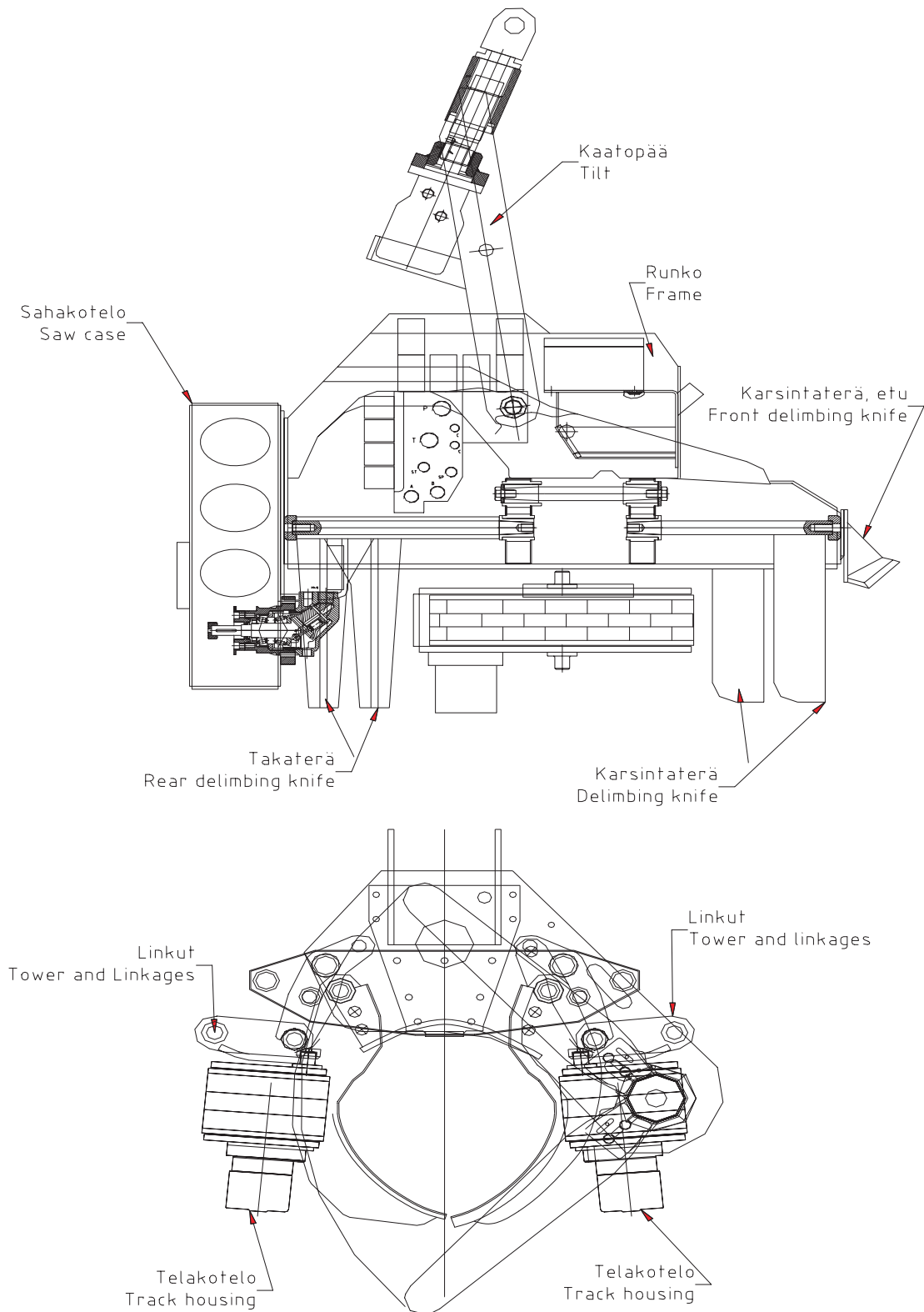
/K="Keto" hydraulic motor

/R=Standard hydraulic motor

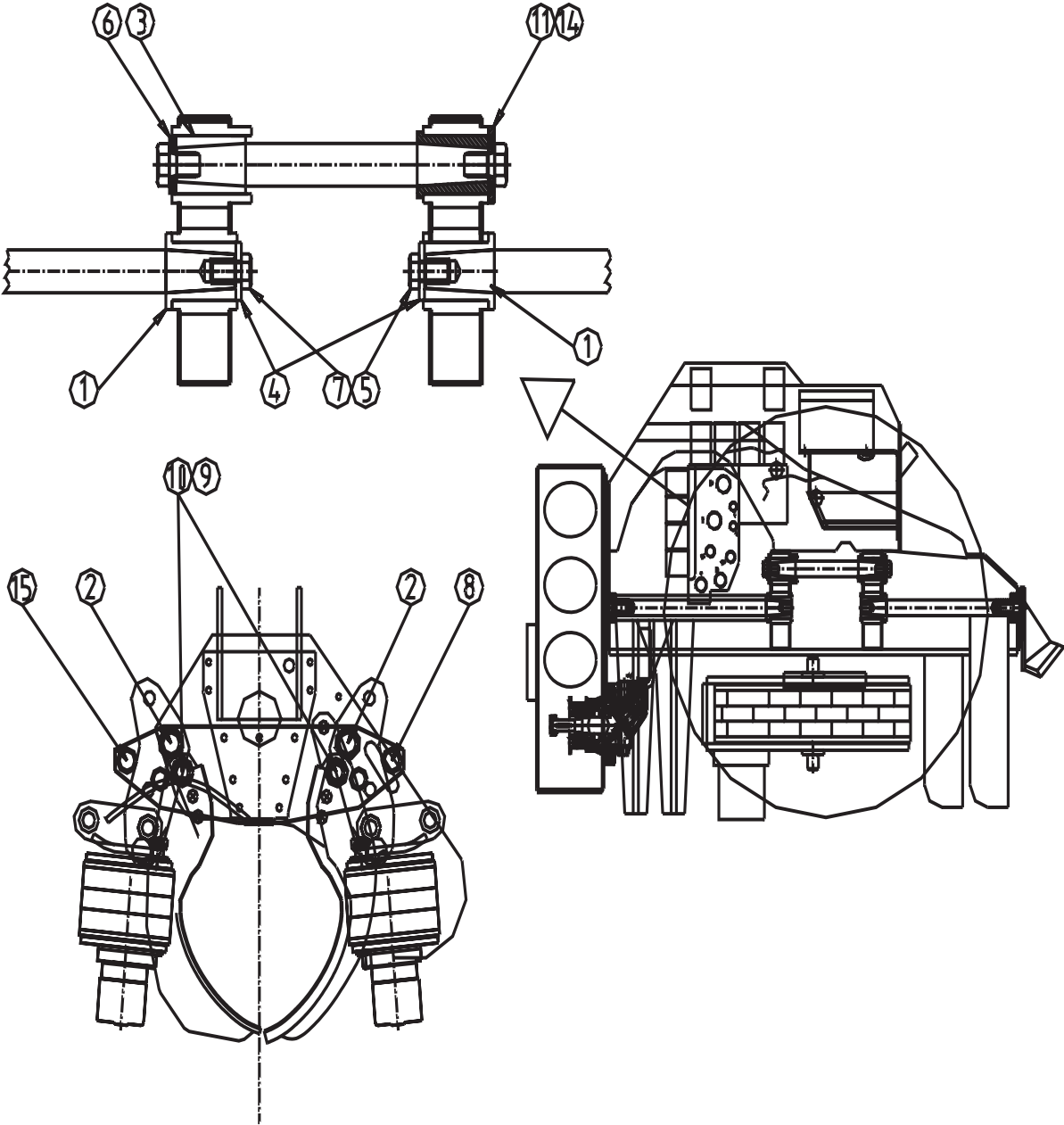
All rights reserved.



## 2. Frame



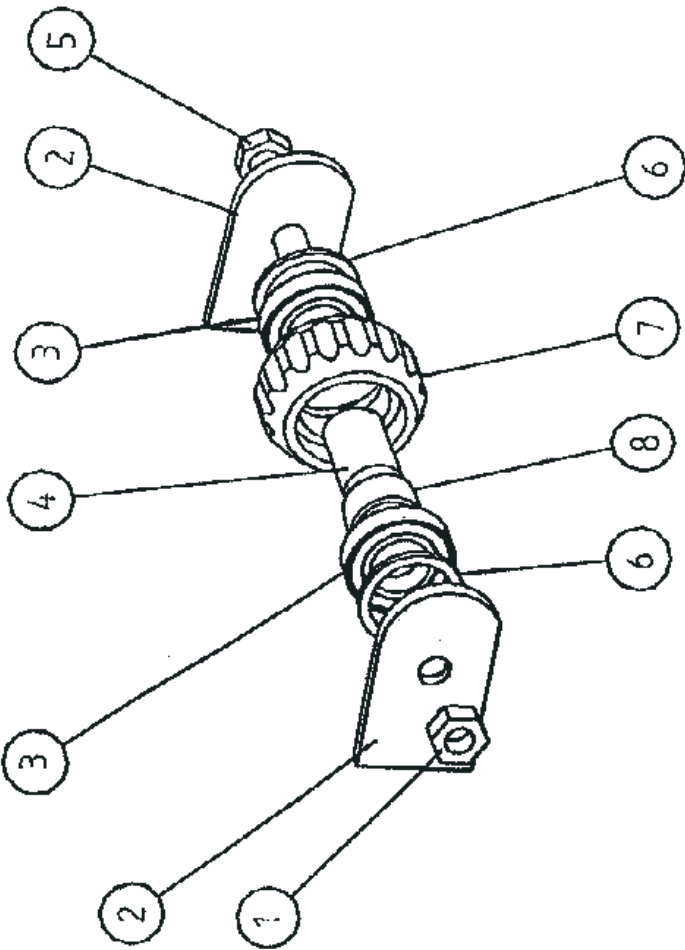
Frame shafts assy



### Frame shafts assy

POS	NUMBER	QTY	ITEM	NOTE
1.	1-1304-11	6	Sleeve	Ø28/38 L=58
2.	1-1302-12	2	Frame pin	Ø28 L=276
3.	1-1304-13	2	Sleeve	Ø22/38 L=58
4.	1-1304-17	6	Washer	Ø16.5/50 s=5
5.	9-0116-35	10	Hex. head screw	M16x1.5x35
6.	1-1304-16	2	Washer	Ø12/34 s = 8
7.	3-2170-73	2	Hex. head screw	M12x1,5x30 with sensor hole
8.	1-1302-13	1	Frame pin	Ø25 L = 276
9.	1-1302-11	2	Frame pin	Ø28 L = 345
10.	1-1302-15	2	Frame pin	Ø28 L = 380
11.	1-1304-18	2	Washer	Ø12.5/45 s = 5
12.	1-1304-12	2	Sleeve	Ø19/35 L= 58
13.	1-1304-14	2	Sleeve	Ø19/35 L= 58
14.	1-1304-15	2	Washer	Ø12.5/34 s = 8
15.	1-1302-14	1	Frame pin	Ø25 L=276 with sensor hole

Reversing wheel

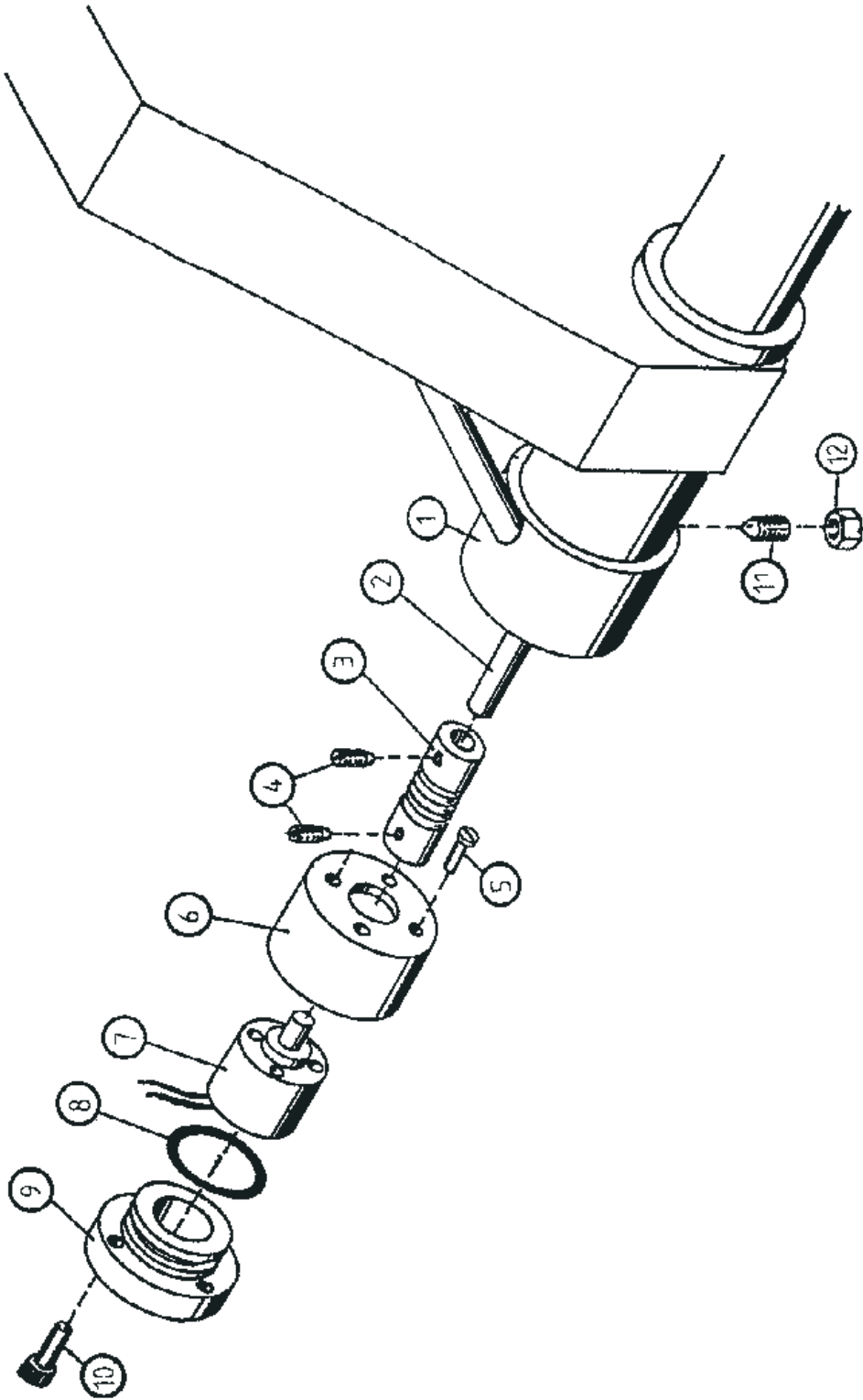




## Reversing wheel

POS	NUMBER	QTY	ITEM	NOTE
0.	4-1110	1	Reversing wheel	Compl.
0.	4-1110-11	1	Reversing wheel	Without side plates (pos2.)
1.	9-1116	1	Nut	M16 Nyloc
2.	3-1000-32	2	Side plate	
3.	8-3100-6	2	Bearing	2RS6006
4.	4-1110-5	1	Shaft	Ø16/30x54
4.	4-1110-55	1	Shaft greasing	
5.	9-0017-0	1	Hex. head screw	M16x100
5.	4-3109-34		Hex. head screw with grease	DIN 931
6.	4-1110-2	2	Spacer ring	Ø30/37x4
6.	4-1110-21	2	Spacer ring wide	
7.	4-1110-3	1	Wheel	
8.	4-1110-4	1	Sleeve	Ø30/37x20
8.	4-1110-41	1	Sleeve with grease	

Thickness indicator (EPEC)



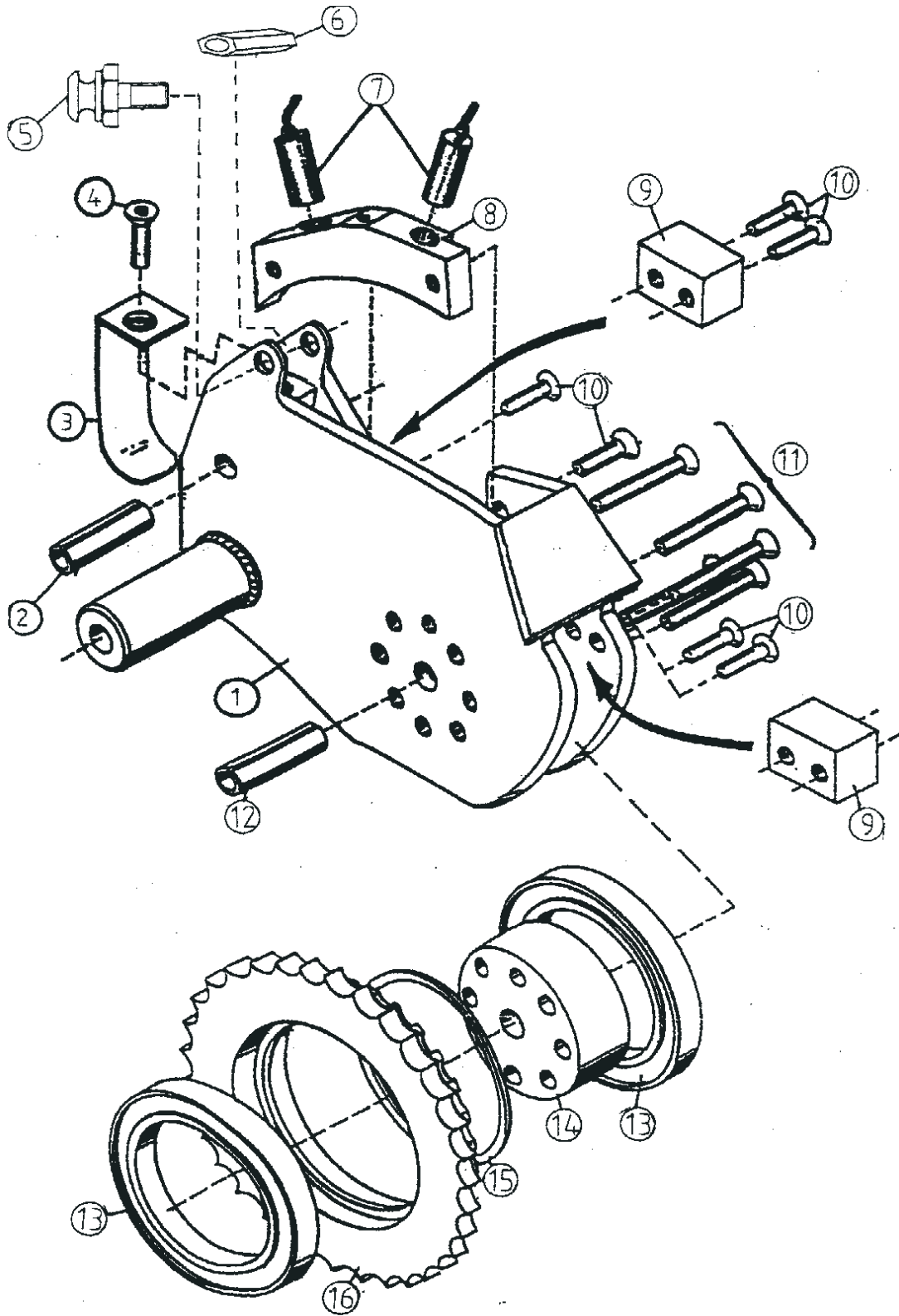
**(EPEC)Thickness indicator**

POS	NUMBER	QTY	ITEM	NOTE	
0.	3-2150	1	Thickness sensor	Compl.	
1.	3-2151	1	Frame		
2.	3-2150-1	1	Shaft Ø4		
2.	3-2160-1	1	Shaft Ø6	Emeta	
3.	3-2150-2	1	Coupling		
3.	3-2160-2	1	Coupling	Emeta	
4.	9-0404-05	2	Allen set screw	M4x5	DIN 914
5.	9-0503-08	4	Slot-headed screw	M3x8	
6.	3-2150-3	1	Sensor housing		
7.	3-2150-4	1	Sensor		
7.	3-2150-90	1	Sensor	Emeta (500 pulses)	No.566->
8.	9-2060	1	O-ring	OR 60x2,6	
9.	3-2151-1	1	Cover		
10.	9-0206-12	4	Hex. socket head screw	M6x12	DIN 912
11.	9-0406-16	1	Allen set screw	M6x16	DIN 914
12.	9-1006	1	Hexagon nut	M6	DIN 934

**Note**

*If the thickness sensor is Emeta, pos.6 is not in use.*

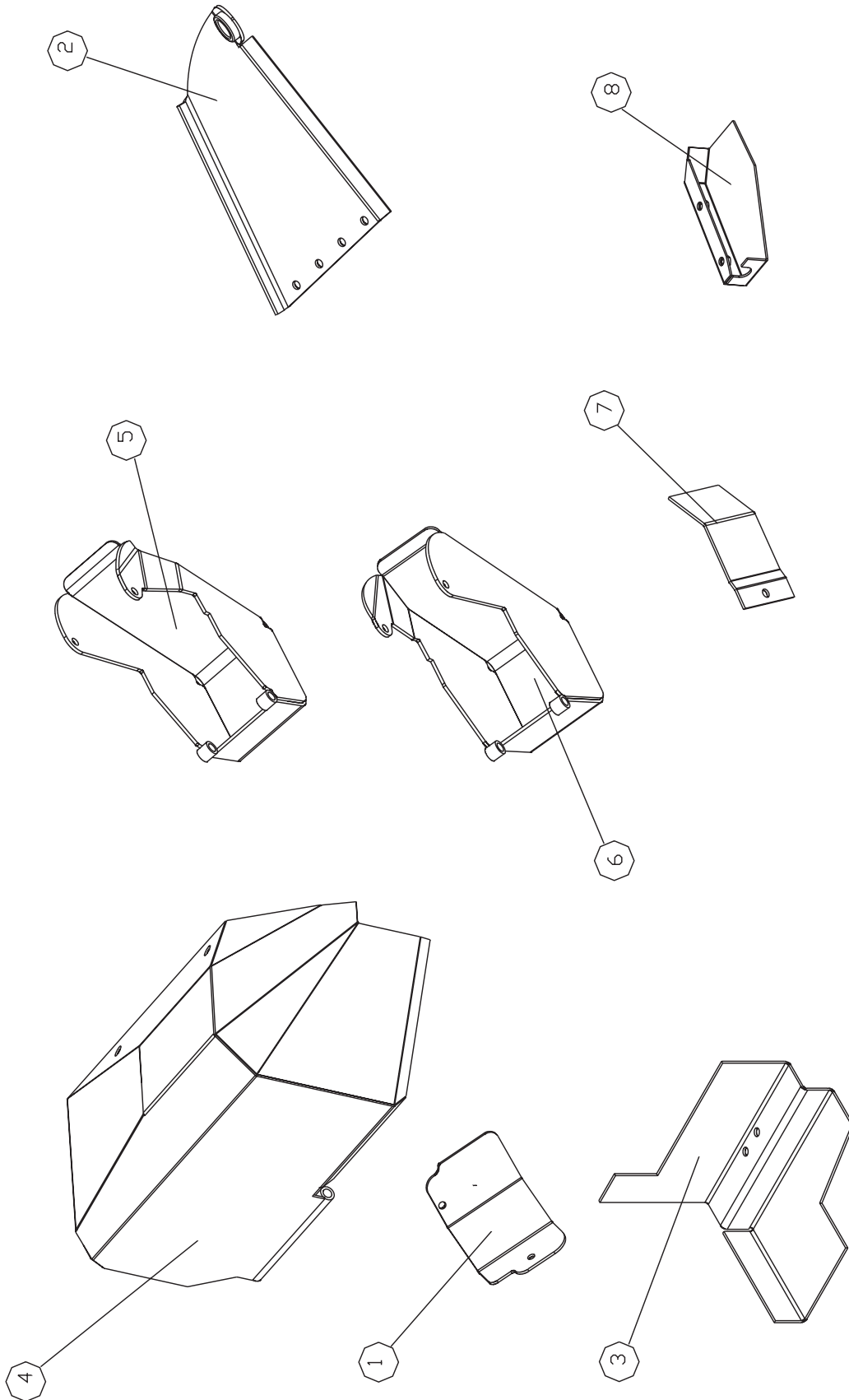
### Measuring wheel



## Measuring wheel

POS	NUMBER	QTY	ITEM	NOTE
0.	3-2110-1	1	Measuring wheel	Compl. long pipe
0.	3-2110-2	1	Measuring wheel	Compl. short pipe
1.	3-2109-1	1	Frame	
2.	9-1708-4	1	Roll pin	Ø8x40
3.	4-2108	1	Cable inlet	
4.	9-0306-16	1	Hex. socket head screw	M6x16      DIN 912
5.	3-2113-2	2	Spring clamp	
6.	3-2113-3	1	Threaded sleeve	
7.	8-1000	2	Inductive sensor	M8x1
8.	4-1109-5	1	Attachment piece of sensor	8 mm
9.	3-2111	2	Sensor cover	
10.	9-0006-12L	6	Hex. socket head screw count.	M6x12
11.	9-0006-3L	8	Hex. socket head screw count.	M6x30
12.	9-1710-35	1	Roll pin	Ø10x35
13.	8-3108-11	2	Bearing	6811-2RS
14.	4-1106	1	Shaft	
15.	4-1108	1	Spacer ring	
16.	4-1107	1	Measuring reel	
16.	4-1107-1	1	Measuring reel	Spacce

Covers assy



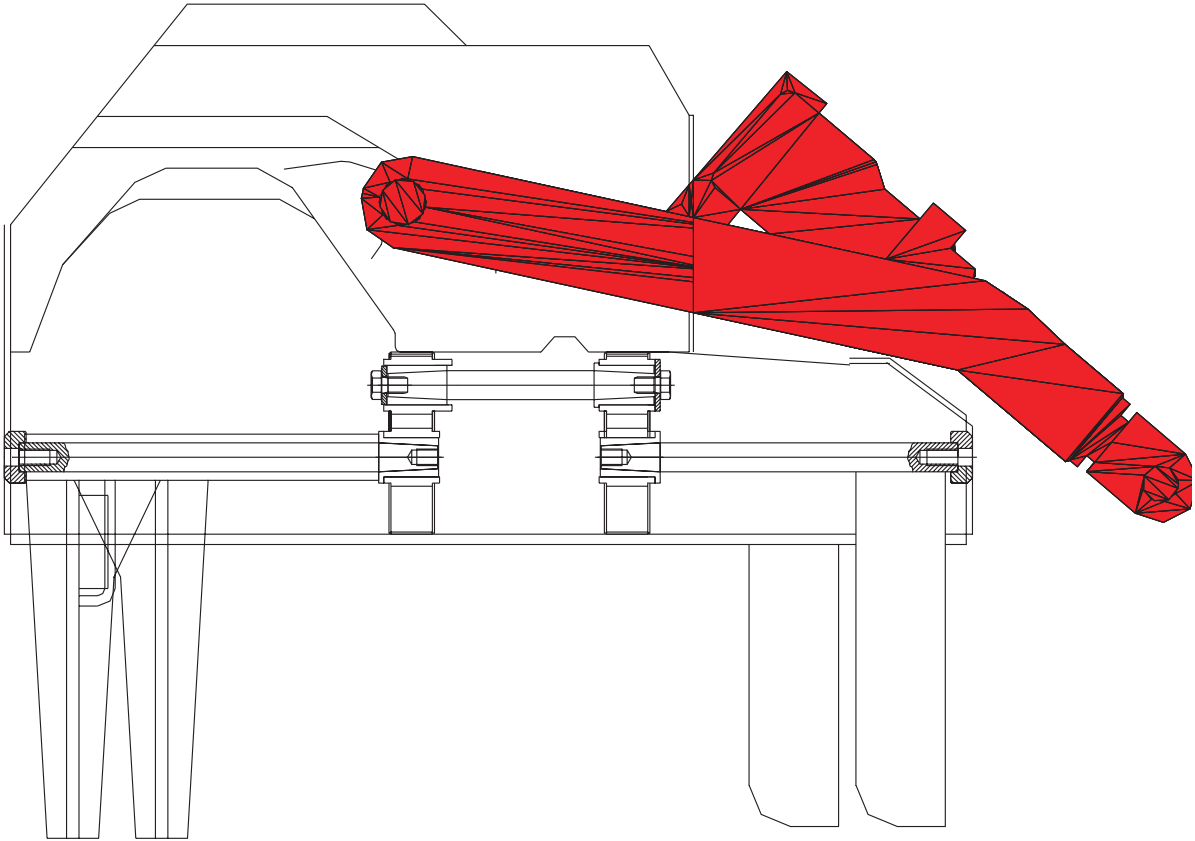
**Covers assy**

<b>POS NUMBER</b>	<b>QTY</b>	<b>ITEM</b>	<b>NOTE</b>
1.	1	Frame cover	
2. 5-1300-19	1	Hose cover	
3. 1-1305-16	1	Lower cover of block	
4. 1-1305-18	1	Upper cover of block	
5. 3-1072	1	Boot NS	NS
6. 3-1072-1	1	Boot SS	SS
7.	1	Measuring wheel cover	
8.	1	Saw sensor cover	

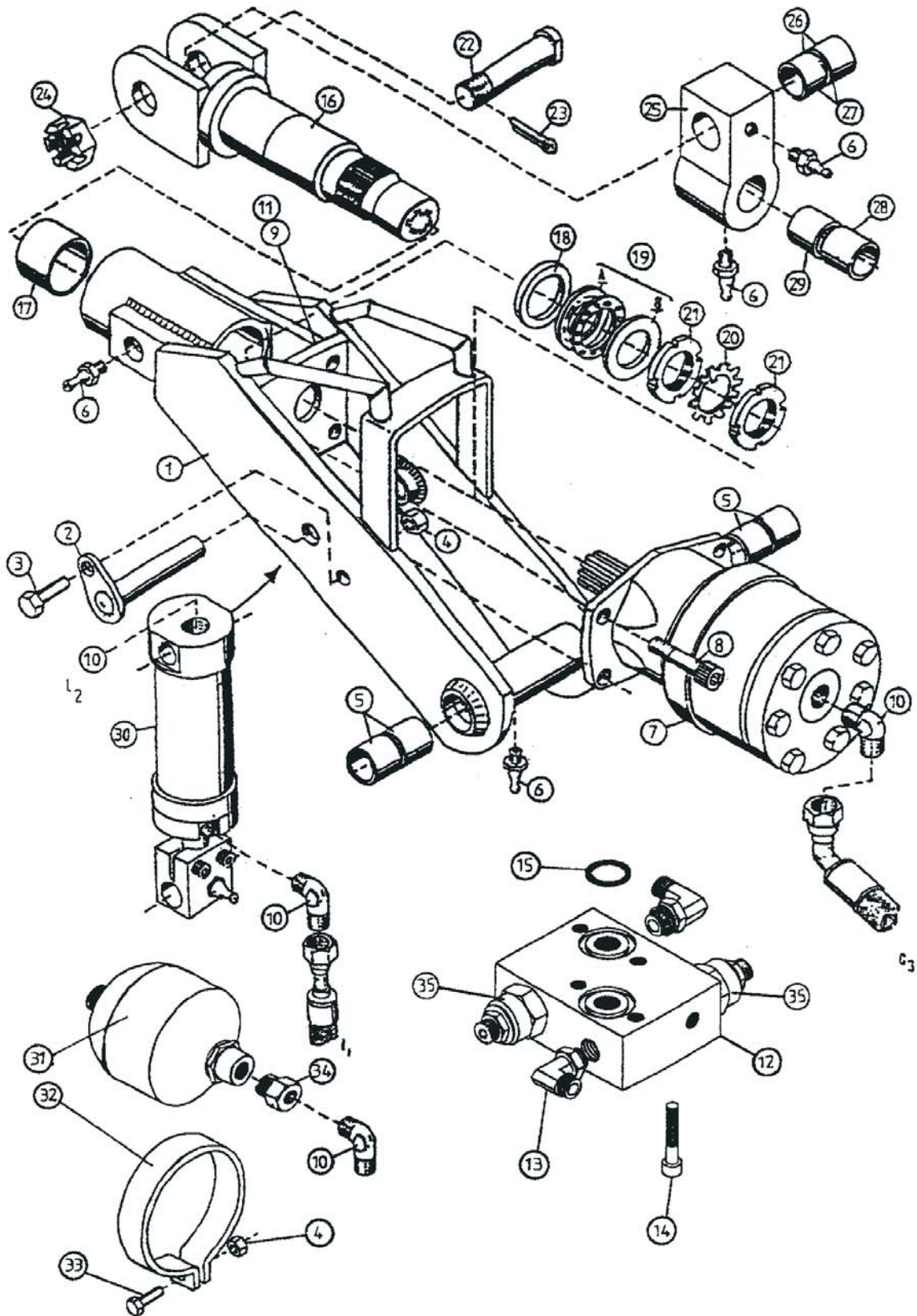




### 3. Tilt



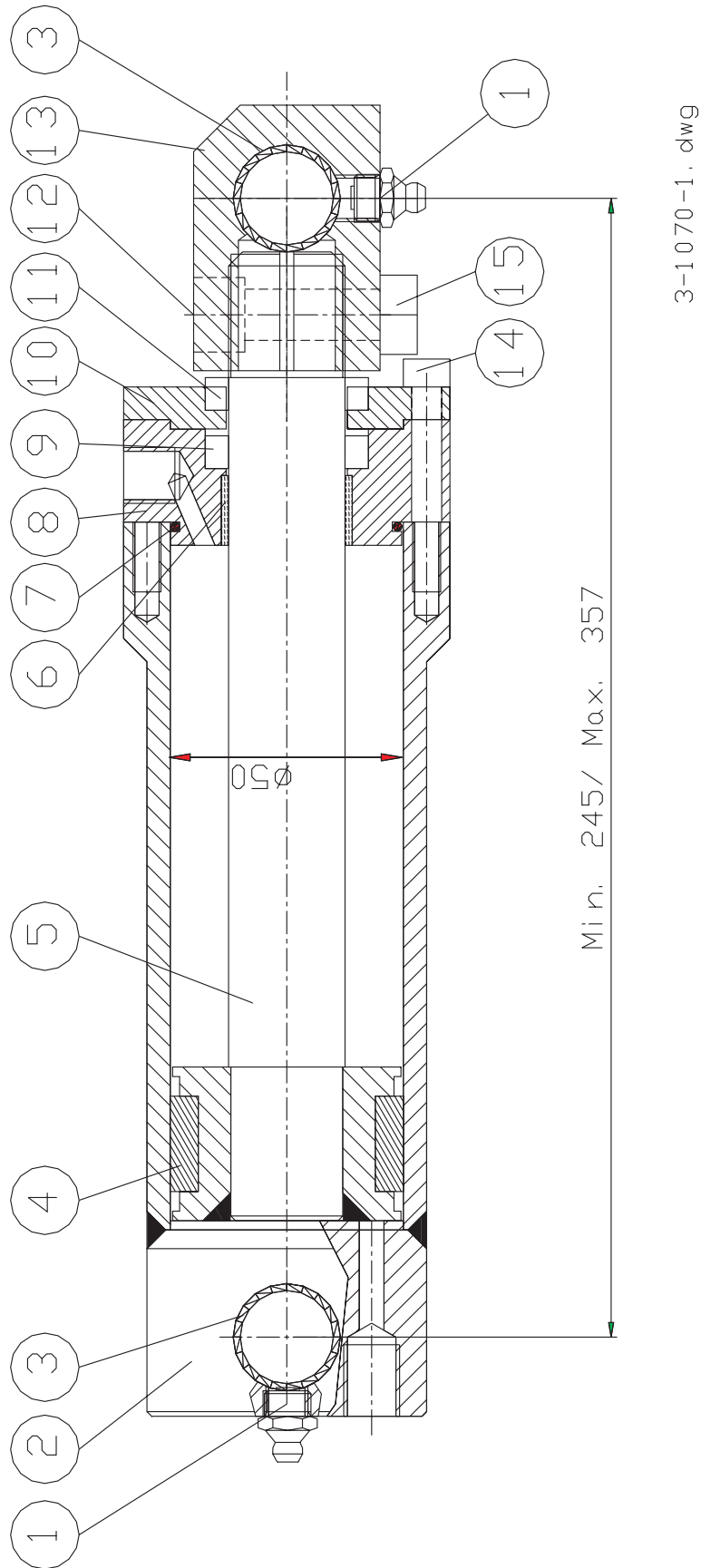
Tilt



## Tilt

POS	NUMBER	QTY	ITEM	NOTE	
0.	8-9014-5	1	Seal kit	DANFOSS OMH 400	
1.	3-1300	1	Frame	LD	
2.	4-1133-1	1	Shaft	Ø20, L-160, c-c 65	
3.	9-0010-3	1	Hex. head screw	M10x30	DIN 933
4.	9-1110	2	Lock nut	M10 Nyloc	DIN 982
5.	8-5025-1	4	Bearing bush	WB800 Ø25/28-25	
6.	9-2800	5	Grease nipple	R 1/8"	
7.	8-9014-0B	1	Hydraulic motor	DANFOSS OMH 400(p.33)	
8.	9-0212-55	4	Hex. head screw	M12x55	DIN 912
9.	9-1212	8	Washer	M12	
10.	8-9513-1	3	Angle nipple	R1/4"-1/4" 90°	
11.	9-1112	4	Lock nut	M12 Nyloc	DIN 982
12.	4-4151-1	1	Double pressure valve, block		
13.	8-9512-10	2	Angle nipple	R1/4" 90°	
14.	9-0208-4	4	Hex. socket head screw	M8x40	DIN 912
15.	9-2022	2	O-ring	22x2,6	
16.	3-1025-1	1	Shaft	Ø60	
17.	8-5060-1	1	Bearing bush	WB800 Ø60/65-60	
18.	4-5088	1	Spacer ring	Ø75/55,5-9	
19.	8-3211	1	Axial bearing	SKF51111 Ø55	
20.	9-1511	1	Securing washer	Mb 11	
21.	9-1191-11	2	Shaft nut	Km 11	
22.	3-1107-1	1	Shaft of bracket	Ø35	
23.	9-1806-6	1	Cotter pin	Ø4x63	
24.	9-1130-2	1	Crown nut	M30x3,5	
25.	4-1117	1	Bracket	50x80 Ø35/45	
25.	4-1117-1	1	Bracket	50x80 Ø35/35	
25.	4-1117-2	1	Bracket (Long)	50x170 Ø35/45	
25.	4-1117-3	1	Bracket (Long)	50x170 Ø35/35	
26.	8-5035-1	2	Bearing bush	WB800 Ø35/39-40	
27.	8-5045	2	Bearing bush	WB800 Ø45/50-40	
28.	8-5035-03	1	Bearing bush	WB800 Ø35/39-30	
29.	8-5035-02	1	Bearing bush	WB800 Ø35/39-20	
30.	3-1071-1	1	Hydraulic cylinder	Double-acting	
31.	8-3008	1	Pressure accumulator		
32.	8-3008-15	1	Pressure accumulator attach		
33.	9-0010-35	1	Hex. head screw	M10x35	DIN 933
34.	8-9515-15	1	Reducing nipple	1/2"-1/4"	
35.	8-2003	2	Press. red. valve	TBA 100/175	

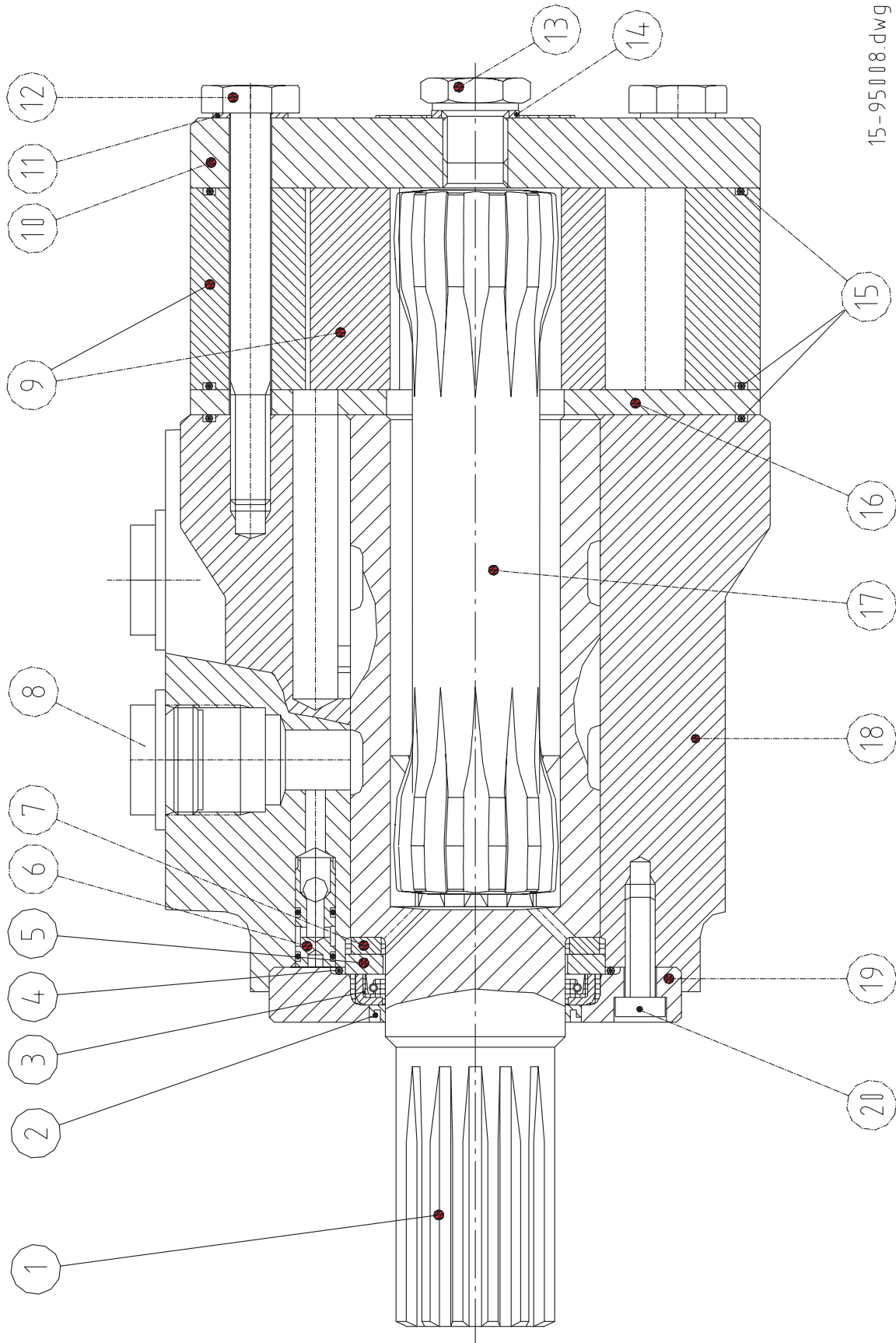
Tilt cylinder, double acting



## Tilt cylinder, double acting

POS	NUMBER	QTY	ITEM	NOTE
0.	9-2150-25	1	Gasket set	
0.	3-1071-1	1	Tilt cylinder	
1.	9-2800	3	Grease nipple	R1/8"
2.	3-1071-11	1	Cylinder pipe+end cover	Ø50
3.	8-5020-3	4	Bearing bush	WB800 Ø20/23-30
4.	9-2240	1	Piston seal	DPS 50
5.	4-1190-1	1	Piston+stem	
6.	8-5025-0	1	Stem guide sleeve	WB800 Ø25/28-15
	15-25007	1	Stem guide sleeve	No. 794-->
7.	9-2045	1	O-ring	Ø45,69x2,62
8.	4-1188-2	1	Front plate	
	15-25006	1	Front plate	No. 794-->
9.	9-2325-1	1	Piston stem seal	Ø25/35-9
10.	4-1189	1	Wiper holder	
11.	9-2525	1	Stem wiper	Ø25/35-5/7
12.	9-0210-45	2	Hex. socket head screw	M10x45 DIN 912
13.	4-1192	1	Piston stem fastener	
14.	9-0206-4	10	Hex. socket head screw	M6x40 DIN 912
15.	9-1110	2	Hex. head lock nut	M10 Nyloc DIN 982

### OMH-400 Hydraulic motor for tilt



15-95008.dwg

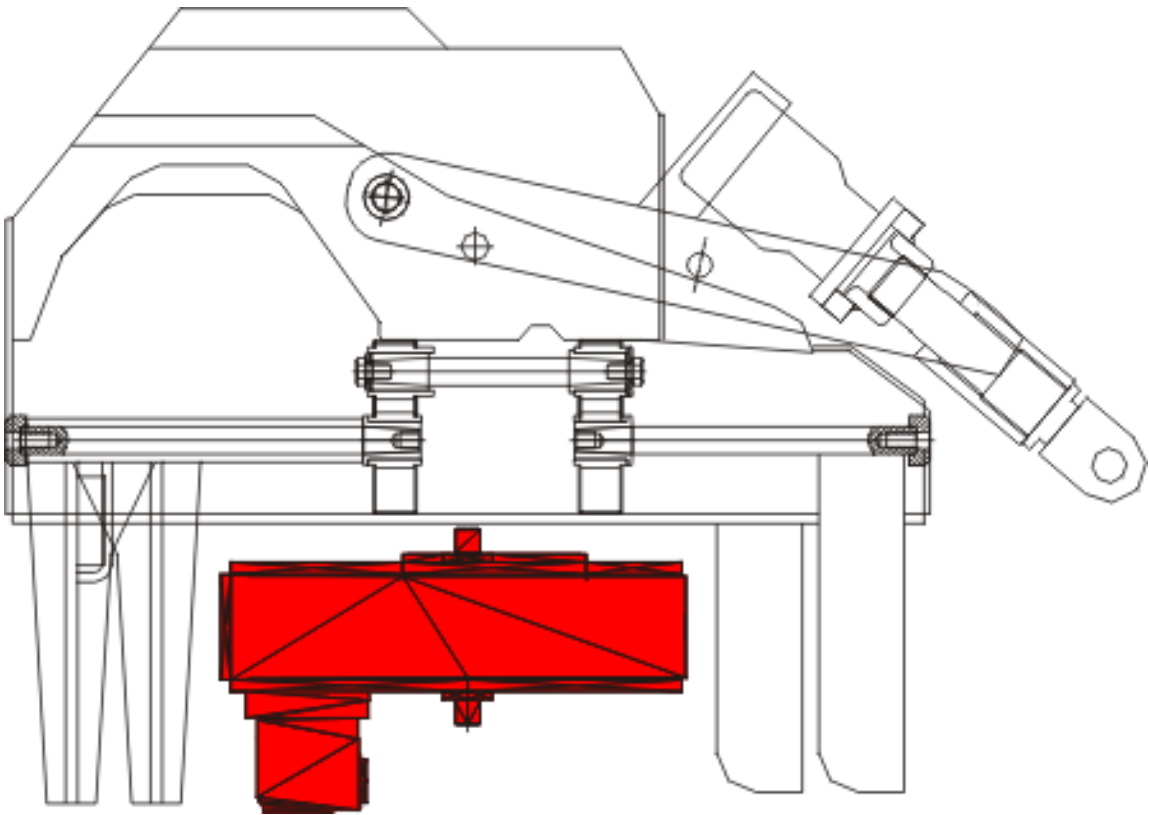
**OMH-400 Hydraulic motor for tilt**

<b>POS</b>	<b>NUMBER</b>	<b>QTY</b>	<b>ITEM</b>	<b>NOTE</b>	
0.	8-9014-0B	1	Hydraulic motor	OMH-400 Booreshaft	
0.	8-9014-5	1	Gasket set	Inc. Pos. 2,3,4,11 ja 15	
1.	8-9014-3	1	Out put shaft	5/4" spl.	151H0324
2.	8-9014-53	1	Dust seal ring	36x42x3,5	633B3396
3.	8-9014-55	1	Shaft seal	36x48x5,5	633B3395
4.	9-2053	1	O-ring	53x2	633B1528
5.	8-9014-4	1	Bearing race		981X9224
6.	8-9014-8	2	Check valve		151-1076
7.	8-9014-7	1	Needle bearing		981X9223
8.	8-9016-16	2	Shelterplug	G1/2-14	633X0074
9.	8-9014-9	1	Gear wheel set		151H1256
10.	8-9014-10	1	Endcover		151H0310
11.	8-9014-14	7	Washer	10,2x14,9x1,0	684X2152
12.	8-9014-17	7	Bolt	M10x1,5x90 (12,9/7,5daNm)	
13.	8-9014-16	1	Drain plug	G1/4-A	151-1524
14.	8-9014-15	1	Washer	13,5x17,5x1,5	684X2120
15.	9-2099-8	3	O-ring	105x2	633B1807
16.	8-9014-11	1	Distributor plate		151H0305
17.	8-9014-6	1	Cardan shaft		151H0341
18.	8-9014-12	1	Bearing house		151H0317
19.	8-9014-13	1	Spigot flange		151H0301
20.	9-0206-16	6	Hex. socket head screw	M6x16	



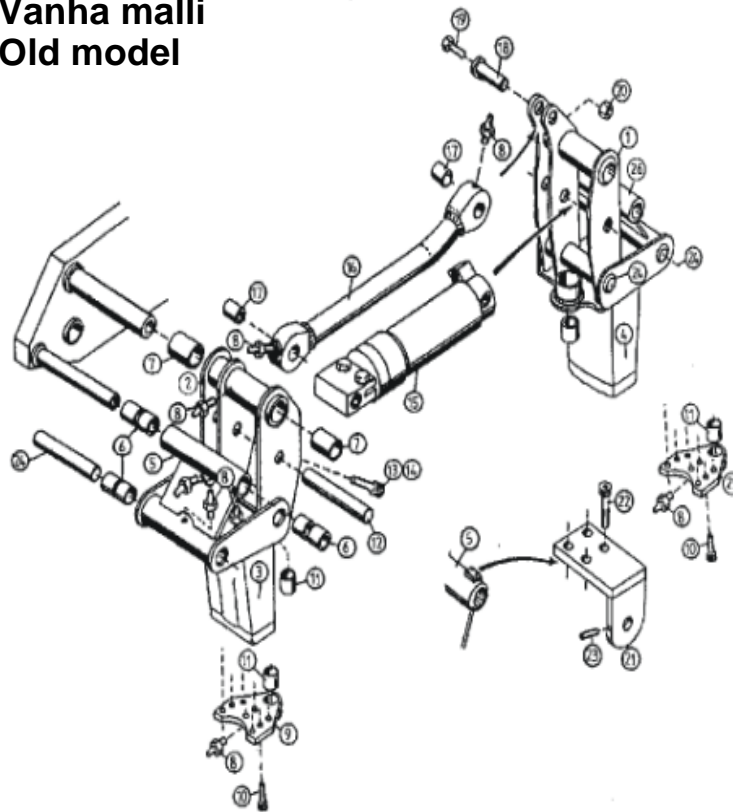


### 4. Tower and tracks

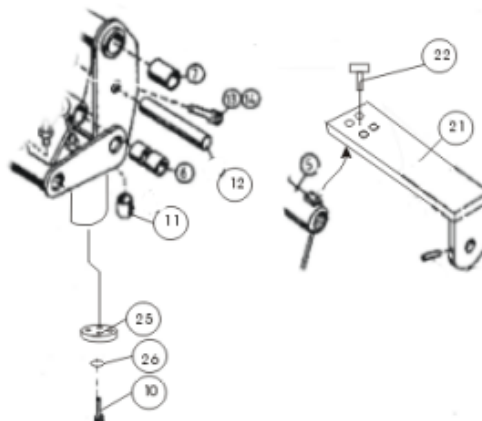


Tower and tracks

**Vanha malli**  
**Old model**



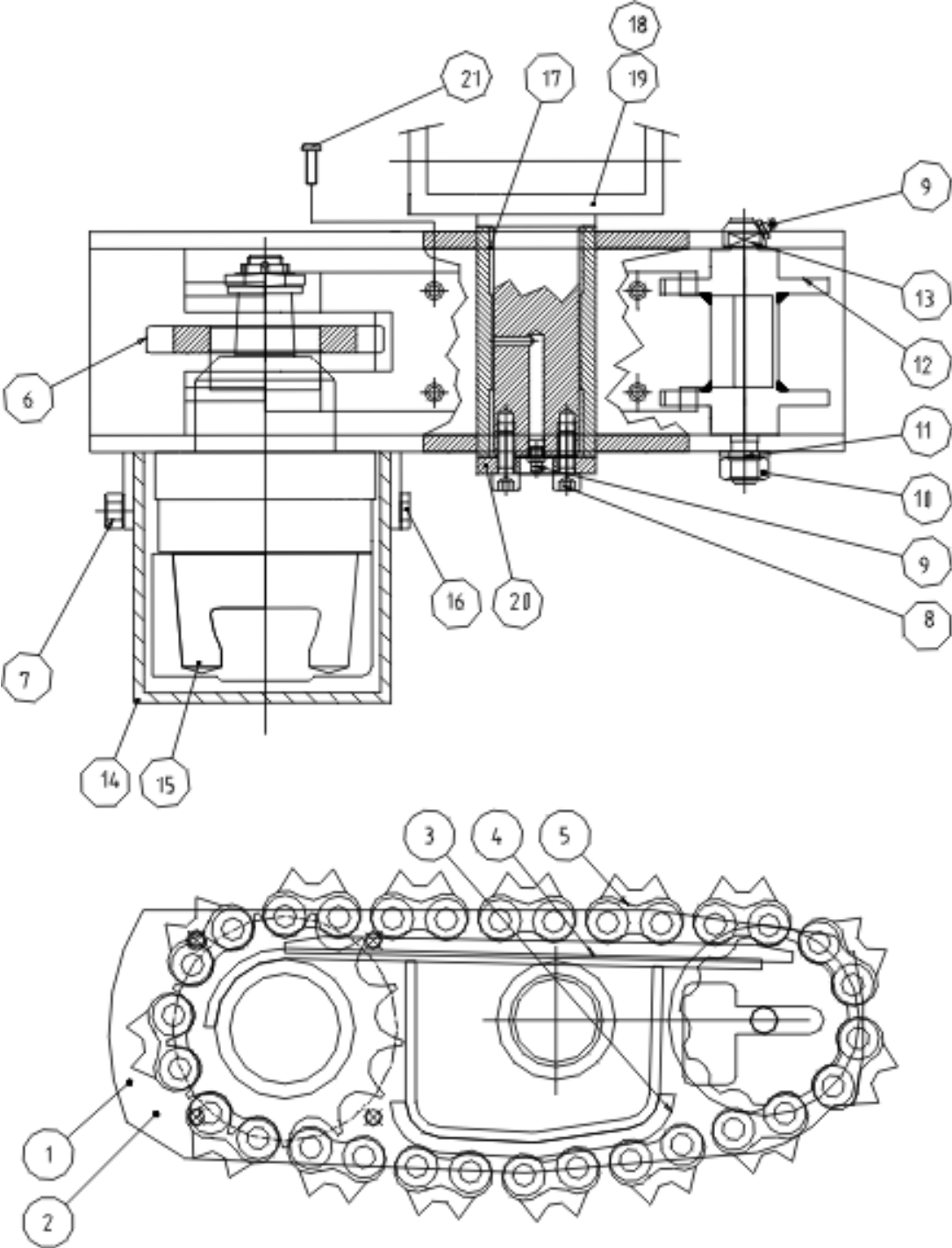
**Uusi malli no. 596-->**  
**New model no. 596-->**



## Tower and tracks

POS	NUMBER	QTY	ITEM	NOTE	
0.	3-1013	1	Tower and tracks	Compl. SS	
0.	3-1014	1	Tower and tracks	Compl. NS	
1.	3-1016-1	1	Inner shank	NS	
2.	3-1015-1	1	Inner shank	SS	
3.	3-1018	1	Tower frame	NS	
		1	Tower frame	NS	No. 596-->
4.	3-1017	1	Tower frame	SS	
		1	Tower frame	SS	No. 596-->
5.	4-1020	1	Outer shank	NS	
	4-1019	1	Outer shank	NS	
6.	8-5025-1	24	Bearing bush	WB800 Ø25/28-25	
7.	8-5028-1	8	Bearing bush	WB800 Ø28/31-25	
8.	9-2800	12	Grease nipple	R1/2"	
9.	4-1050	1	Attachment plate	NS	
	4-1049	1	Attachment plate	SS	
10.	9-0012-3L	10	Hex. head screw	M12x30	DIN 933
11.	8-5022-2	4	Bearing bush	WB800 Ø22/25-20	
12.	9-2925-2	2	Shaft pin	Ø25, L=140 mm	
13.	9-0208-4	2	Hex. socket head screw	M8x40	DIN 912
14.	4-2002	2	Cylinder pin locking		
15.	3-1069	1	Track cylinder		
16.	4-1044-1	1	Rod		
17.	8-5025-01	2	Bearing bush	WB800 Ø25/28-20	
18.	4-1039-1	1	Shaft pin		
19.	9-0010-3	10	Hex. head screw	M10x30	DIN 933
20.	9-1110	1	Hex. head lock nut	M10 Nyloc	DIN 982
21.	3-2170-61	1	L-piece	for EPEC	
	3-2170-63	1	L-piece		No. 596-->
22.	9-0208-25	4	Hex. socket head screw	M8x25	DIN 912
23.	9-0406-16	1	Hex. socket head retaining screw	M6x16	DIN 914
24.	4-1039	2+2	Shaft	Ø25, L=150	
25.	3-1017-32	2	Attachment plate	Ø70 s=12	No. 596-->
26.	9-1310	4	Washer		

Track and swing shaft



## Track and swing shaft

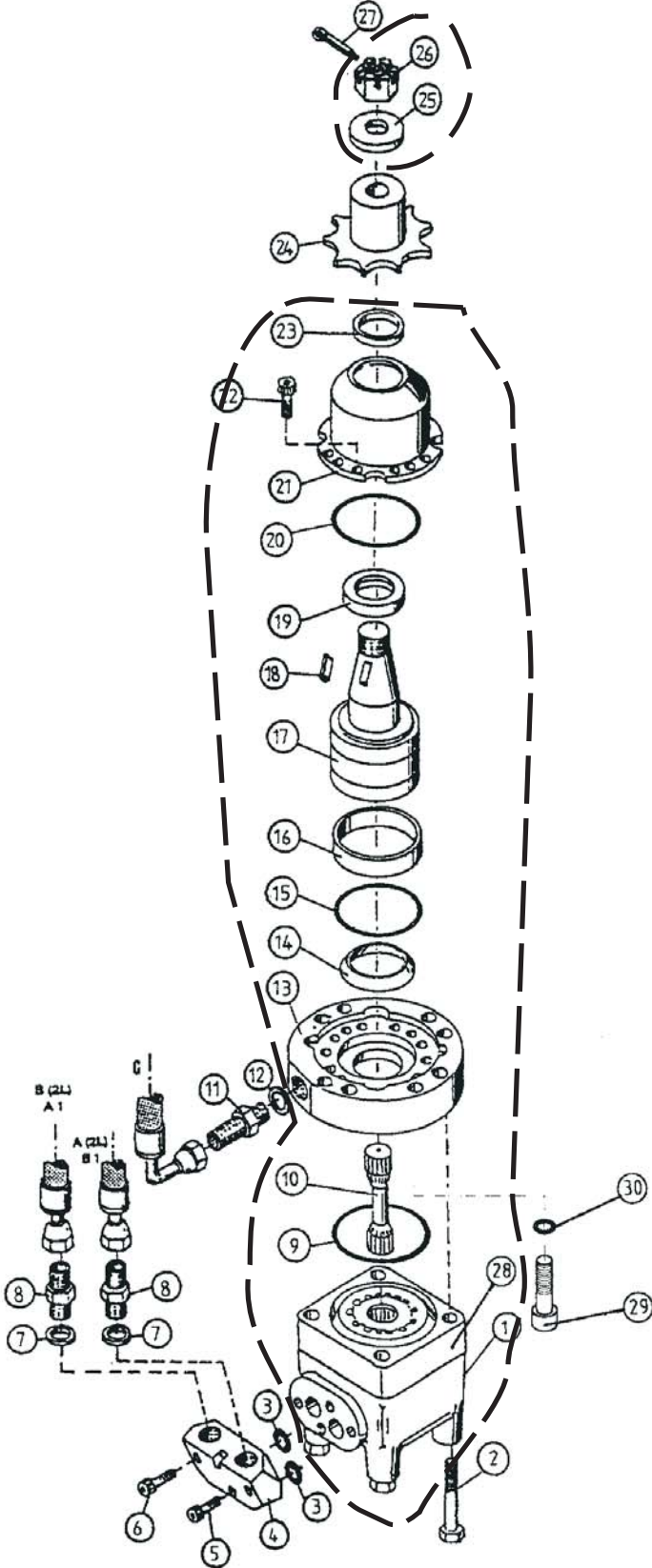
POS	NUMBER	QTY	ITEM	NOTE
1.	2-1009	1	Track house	SS
2.	2-1005-1	1	Track house	NS
3.	15-35002	1/1	Back rail for track	
4.	15-35000	1/1	Track rail	
5.	4-1153	1/1	Track	Ø25 No. 598-->
6.	4-1130-3	1/1	Drive sprocket	OMSS-motor
7.	9-1112	1	Hex. nut	M12 Nyloc
8.	9-0210-3	4/4	Hex. socket head screw	M10x30
9.	2-2800	2	Grease nipple	R1/8"
10.	9-1016	1/1	Hex. nut	M16
11.	9-1316	1/1	Lock washer	M16 Nordlock
12.	4-0102-12	1/1	Idler	
13.		1/1	Shaft of idler	
14.	3-1072	1	Hose cover	NS
15.	8-9012-6	1/1	Hydraulic motor	OMSU 200
16.	9-0013-8	1	Hex. socket head screw	M12x180
17.	8-5050-2	2/2	Bearing bush	WB802 Ø50/55-40
18.	3-1017-3	1	Tower frame	SS
19.	3-1018-3	1	Tower frame	NS
20.	3-1017-32	1/1	Track housing mounting plate	
21.	9-0206-17	4	Hex. socket head screw	M6x16 (low)



## Track cylinder

POS	NUMBER	QTY	ITEM	NOTE
0.	9-2160-25	1	Gasket set	
0.	3-1069		Cylinder	Compl.
1.	4-1172		Hose connector	R1/4"
2.	4-1181		End	Ø60
3.	8-5020-2		Bearing bush	Ø25/28-30
4.	9-2800		Grease nipple	R1/8"
5.	9-2248		Piston seal	DPS 60/48-20.5-4.2
6.	3-1068		Cylinder pipe	Ø60
7.	-		-	-
8.	4-1174-1		Piston Ø60+piston stem	
9.	4-1175		Stem guide sleeve	Ø40-Ø35,1Ø25-26,5
10.	9-2055		O-ring	
11.	4-1176		Front end	
12.	9-2325-1		Piston stem seal	1541-25/35-9
13.	9-2525		Stem wiper	P7 35/35-5/7
14.	4-1177		Wiper holder	
15.	9-0206-4		Hex. socket head screw	M6x40
16.	9-0206-25		Hex. socket head screw	M6x25
17.	4-1180		Piston stem eye	
18.	9-0210-5		Hex. socket head screw	M10x50
19.	9-1110		Lock nut	M10
20.	4-1172		Hose coupling	

Hydraulic motor Danfoss OMSU 200/K assy version 2

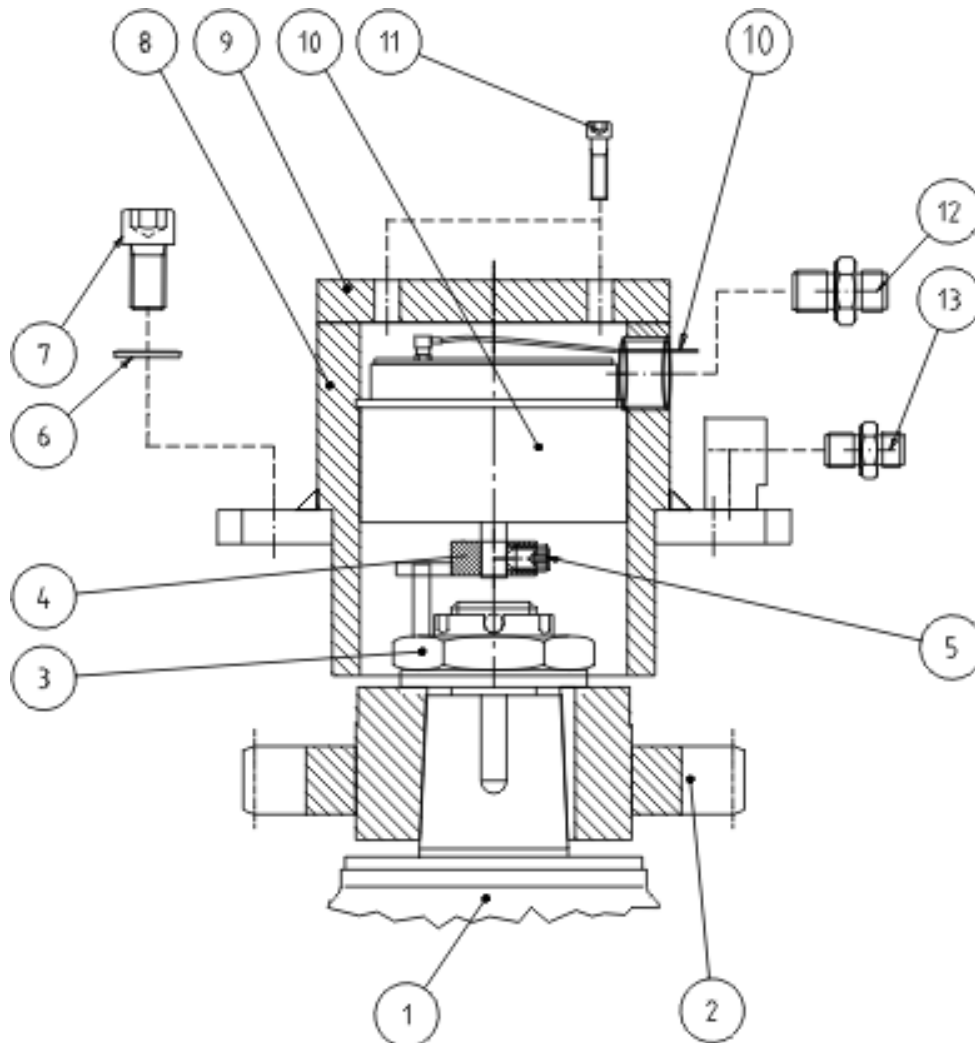




**Hydraulic motor Danfoss OMSU 200/K assy version 2**

POS	NUMBER	QTY	ITEM	NOTE
0.	8-9012-6	1	Hydraulic motor	OMSU 200/K compl.
0.		1	Gasket set	151F1033
1.		1	Cast iron casing	151F1712
2.	8-9012-12	4	Hex. head screw	M10x1,5x120 (12.9) DIN 933
3.	9-2025-1	2	O-ring	25,07x2,6
4.	4-2111-1	1	L-piece	Danfoss OMSU
5.	9-0210-3	1	Hex. socket head screw	M10x30 DIN 982
6.	9-0210-45	1	Hex. socket head screw	M10x45 DIN 912
7.	9-1921-29	2	Usit-ring	R1/2"
8.	8-9710-13	2	Double nipple	R1/2"-5/8"
9.	9-2082	1	O-ring	82x2
10.	8-9012-4	1	Cardan shaft	OMSU 200/K
11.	8-9500-10	1	Double nipple	R1/4"-1/4"
12.	9-1914-20	2	Usit-ring	R1/4"
13.		1	Counter part of rotator	
14.		1	Conical seal ring	
15.	9-2082	1	O-ring	82x2
16.		1	Retaining ring	
17.		1	Drive shaft	OMSU 200/K
18.		1	Plain wedge	
19.		1	Seal ring	OMSU 200/K
20.	9-2072	1	O-ring	OR 72x2
21.		1	Bearing housing	
22.	9-0205-16	19	Hex. socket head screw	M5x16 DIN 912
23.			Dust seal	OMSU 200/K
24.	4-1130-2	1	Drive sprocket	20B Danfoss OMSU No. 598-->
	4-1130-2	1	Drive sprocket	
25.		1	Retaining ring	Danfoss OMSU
26.		1	Special nut	Danfoss OMSU
27.	9-1806-4	1	Cotter pin	Ø3x40
28.		1	Gear wheel set	151F1040
29.	9-0212-4	4	Hex. socket head screw	M12x40 (motor attachment)
30.	9-1312	4	Lock washer	M12 Nordlock

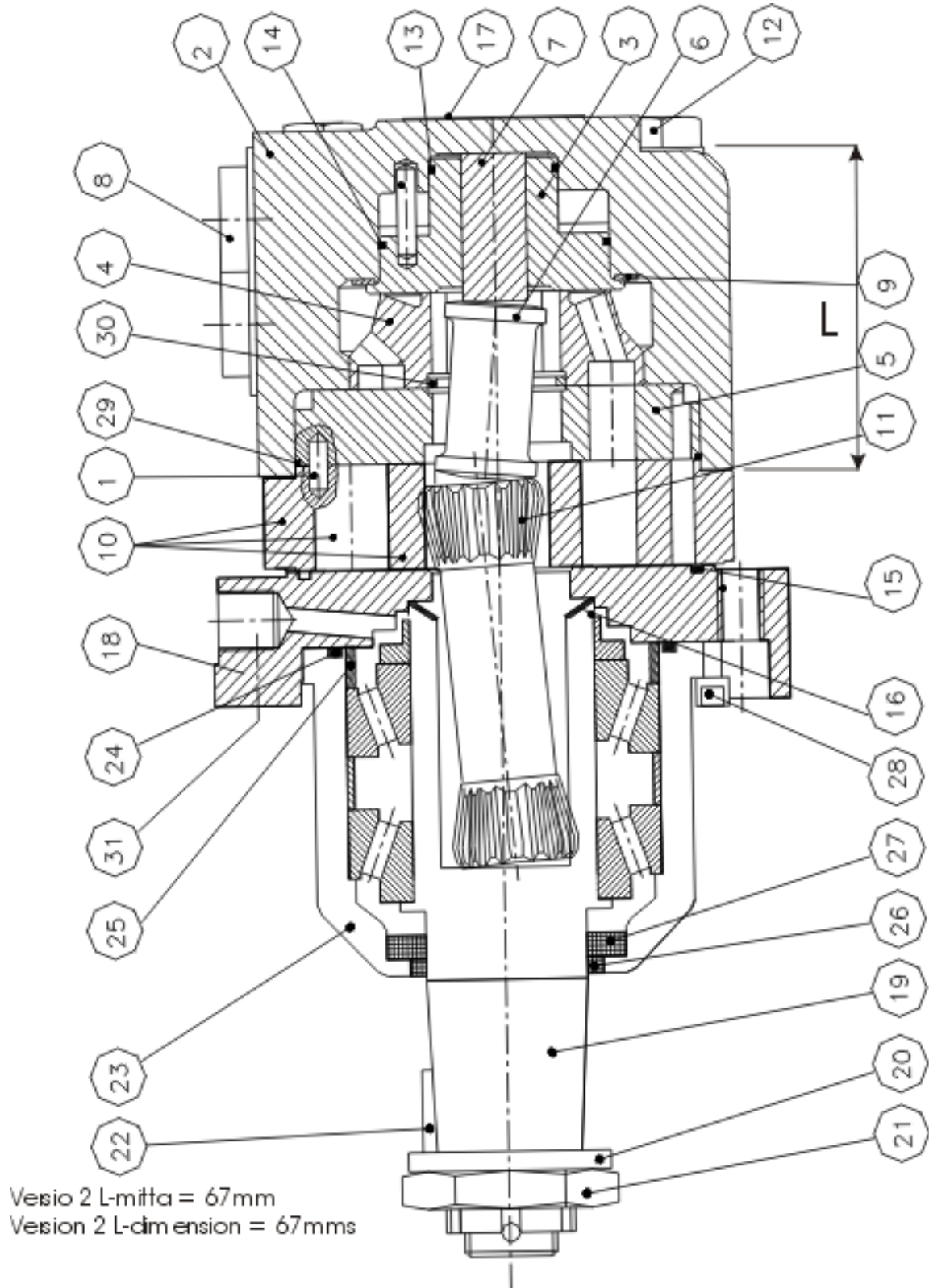
### Track measuring



## Track measuring

POS	NUMBER	QTY	ITEM	NOTE	
0.	3-5150-1	1	Track measuring	SS	
1.	8-9012-6	1	Hydraulic motor	OMSU 200/K	
2.	4-1130-3	1	Drive sprocket	Keto-51	No.-->98
3.	3-5116-13	1	Special nut		
4.	3-5125-1	1	Sensor rotator		
5.	9-0206-10	1	Hex. socket head screw	M6x10	
6.	9-1310	4	Lock washer	M10 Nyloc	
7.	9-0210-2	4	Hex. socket head screw	M10x20	
8.	15-45004	1	Frame		
9.	15-45003	1	Cover		
10.	3-2150-83	1	Sensor Emeta + wire	Malli 300 50 puls. L=2000 mm	
11.	9-0206-12	4	Hex. socket head screw	M6x12	
12.	8-9500-12	1	Double nipple	R3/8"-3/8"	
13.	8-9503-10	1	Connecting nipple	R1/4"-1/4"	

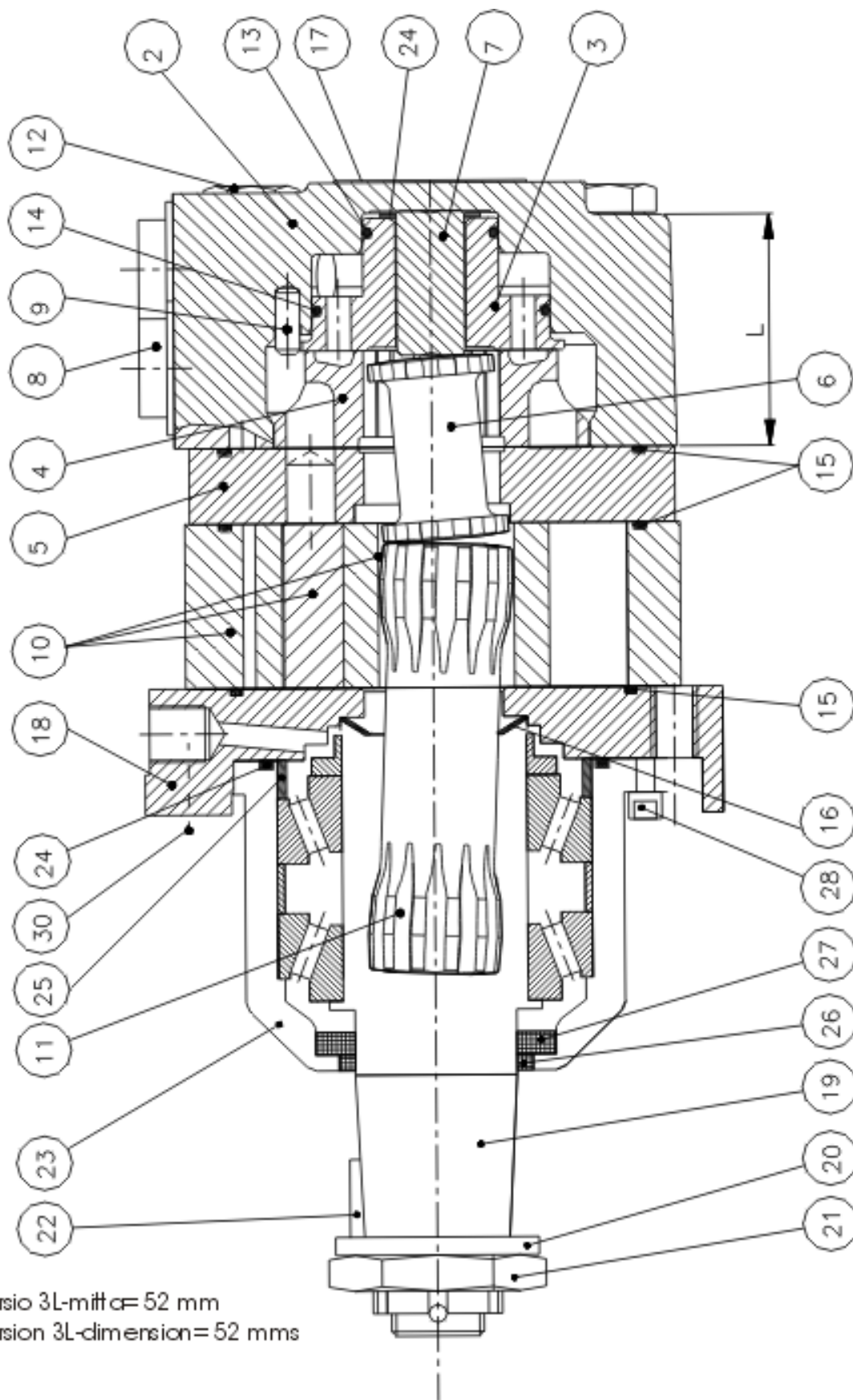
Hydraulic motor Danfoss OMSU 200/K verion 2



## Hydraulic motor Danfoss OMSU 200/K version 2

POS	NUMBER	QTY	ITEM	NOTE
0.	8-9013-6	1	Hydraulic motor	OMSU 160 Compl.
	8-9012-6		Hydraulic motor	OMSU 200 Compl.
	8-9006-6		Hydraulic motor	OMSU 250 Compl.
	8-9012-5		Gasket set	151F10111
1.	-		Guide pin	682L2006
2.	8-9012-9		Valve housing	151F1712
3.	8-9013-18	1	Balance plate	151F1071
4.	8-9013-20	1	Disc valve	151F1022
5.			Channel plate	151F1023
6.	8-9013-9	1	Valve drive	151F1448
7.		1	Spacer	151F1449
8.	8-9620-22M	2	Seal plug	633X0074
9.		1	Spring washer	151B1343
10.	8-9013-8	1	Gear set 160; W=27,9	151F1039
	8-9012-8		Gear wheel set 200	151F1040
	8-9006-8		Gear wheel set 250	151F1041
11.	8-9013-4	1	Cardan shaft 160; L=84	151F1464
12.	8-9013-12	1	Hex. head screw	M10x110, 681x1248
13.	8-9000-18	1	O-ring 24x2 NBR	633B1428
14.	8-9000-19	1	O-ring 45x2 NBR	633B1429
15.			O-ring	633B1431
16.	8-9012-51	1	Conical seal ring	633B9023
17.	8-9013-23	1	Name plate	151A0407
18.	4-2143	1	Rotator counter piece	
19.	8-9012-7	1	Drive shaft	151FD114
20.		1	Stop ring	
21.	8-9012-1	1	Special nut	
22.	8-9013-35	1	Plain wedge	
23.	4-2144	1	Bearing housing	
24.		1	O-ring	Ø72x2
25.	4-2144-1	1	Adapter ring	
26.	8-9012-53	1	Dust seal	633B3198
27.	8-9012-52		Shaft seal	633B3197
28.	9-0205-16	28	Hex. socket head screw	M5x16
29.		2	O-ring	
30.		1	Stop-ring	151F1542
31.	8-9013-12	4	Hex. head screw 160	M10x1,5x110
	8-9012-12		Hex. head screw 200	M10x1,5x120
	8-9006-13		Hex. head screw 250	M10x1,5x130

Hydraulic motor Danfoss OMSU 200/K versio 3



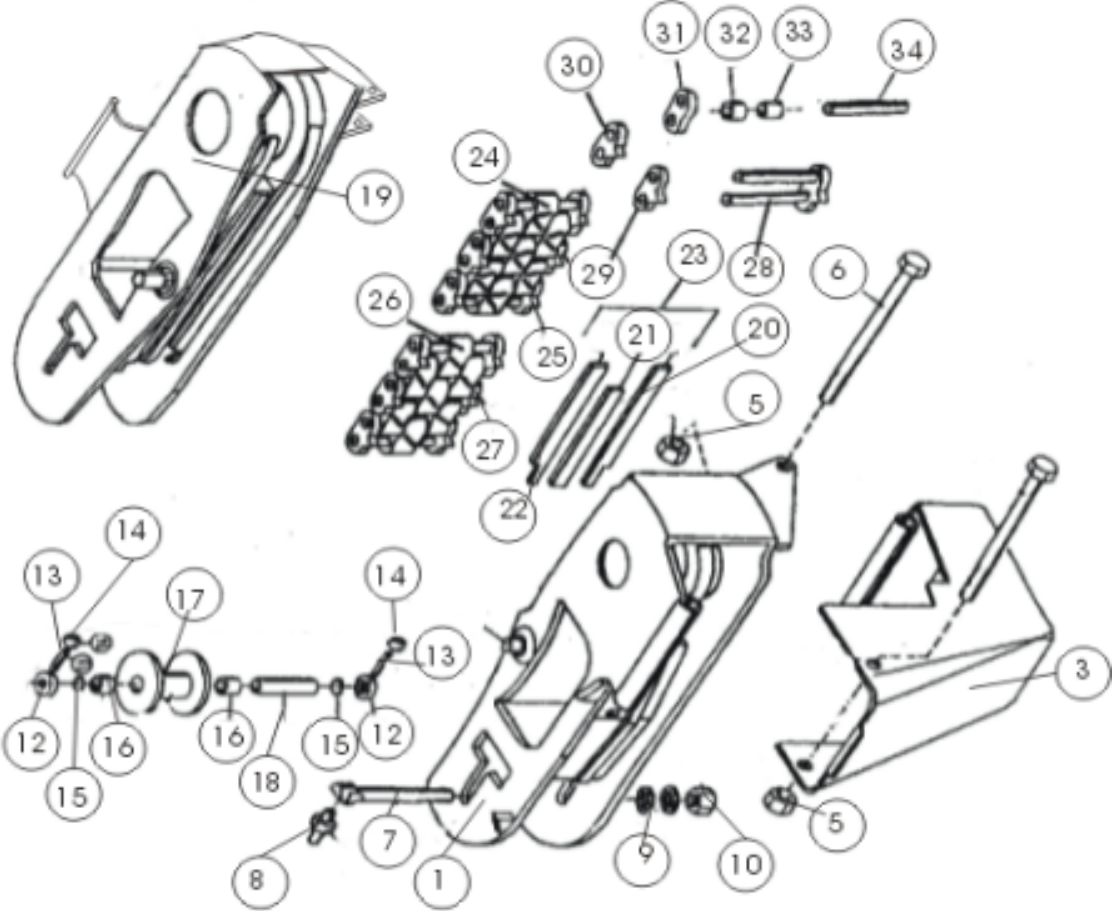
Versio 3L-mitt  $\varnothing$  = 52 mm  
 Version 3L-dimension = 52 mms

**Hydraulic motor Danfoss OMSU 200/K version 3**

POS	NUMBER	QTY	ITEM	NOTE
0.	8-9012-61	1	Hydraulic motor	Compl. 151F0626/K
	8-9012-5	1	Gasket set	151F0111
1.	-			-
2.	8-9012-05	1	Valve housing	151F1801
3.	8-9012-01	1	Balance plate	151F1738
4.	8-9013-20	1	Disc valve	151F1022
5.	8-9012-06	1	Channel plate	151F1023
6.	8-9013-9	1	Valve drive	151F1448
7.	-	1	Spacer	151F1449
8.	8-9620-22M	2	Seal plug	633X0074
9.	-	1	Spring washer	151B1343
10.	8-9013-8	1	Gear wheel set 160; W=27,9	151F1084
	8-9012-04		Gear wheel set 200	151F1085
	8-9006-4		Gear wheel set 250	151F1086
11.	8-9013-4	1	Cardan shaft 160; L=84	151F1464
	8-9012-4		Cardan shaft 200;	151F1769
	8-9006-4		Cardan shaft 250;	151F1770
12.	8-9013-12	1	Hex. head screw	M10x110 681x1348
13.	8-9000-18	1	O-ring 24x2 NBR	633B1428
14.	8-9000-19	1	O-ring 45x2 NBR	633B1429
15.	8-9013-24	2	O-ring 82,5x2 NBR	633B1431
16.	8-9012-51	1	Conical seal ring	633B9023
17.	8-9013-23	1	Name plate	151A0407
18.	20-50002	1	Rotator counter piece	
19.	8-9012-7	1	Drive shaft	151FD114
20.	8-9012-2	1	Stop ring	
21.	3-5116-13 tai	1	Special nut	
	8-9012-1		Shaft nut	
22.	8-9013-35	1	Plain wedge	
23.	4-2144	1	Bearing housing	
24.	9-2072	1	O-ring	Ø72x2
25.	4-2144-1	1	Adapter ring	
26.	8-9012-53	1	Dust seal	633B3198
27.	8-9012-52	1	Shaft seal	633B3197
28.	9-0205-16	28	Hex. socket head screw	M5x16
29.	-		O-ring	
30.	8-9013-12	4	Hex. head screw 160	M10x1,5x110
	8-9012-12		Hex. head screw 200	M10x1,5x120
	8-9006-13		Hex. head screw 250	M10x1,5x130



Tracks

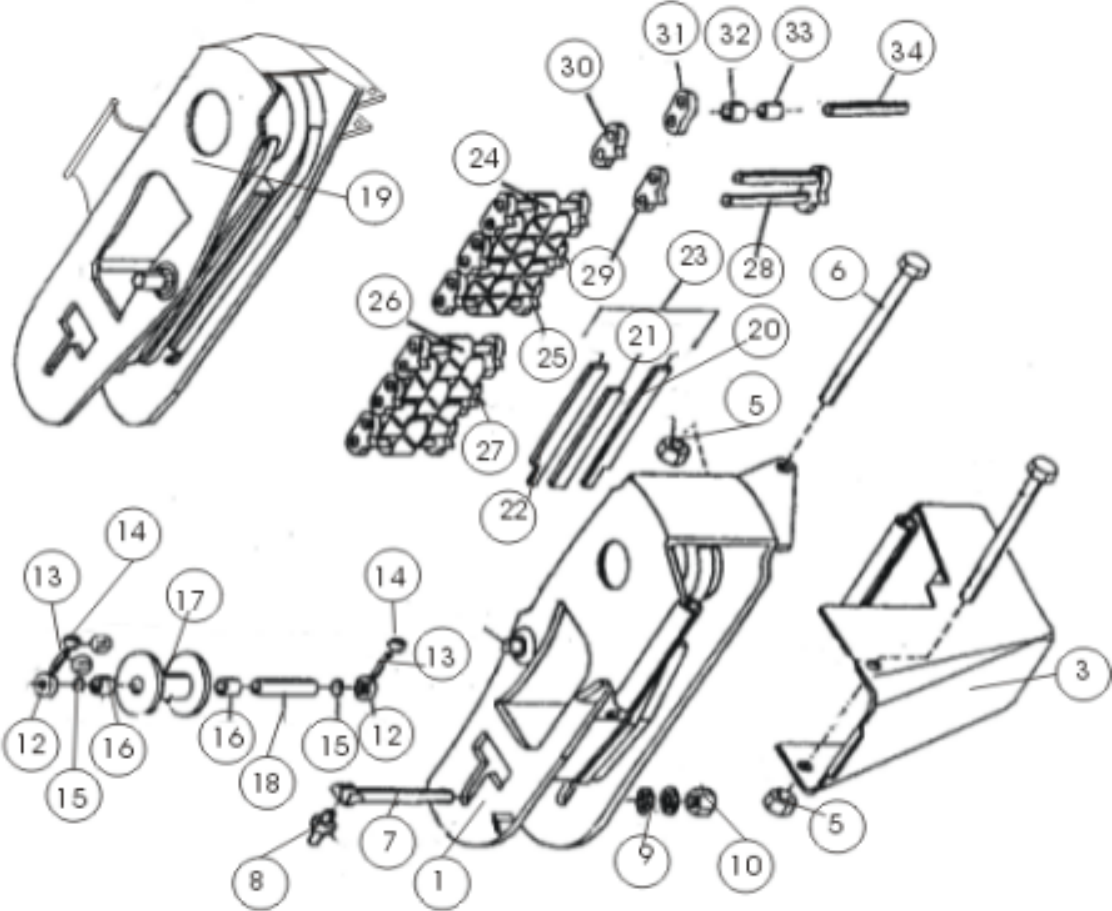




## Tracks

POS	NUMBER	QTY	ITEM	NOTE	
1.	2-1005-1	1	Track housing	NS	
	2-1008	1	Track housing	new models no.596-->	
	2-1007	1	Track housing NS		
2.	4-1118	2/2	Track drawing pin	Ø22	
	4-1118-1	2/2	Track drawing pin, old modell	Ø20	
3.	3-1072	1	Hose shelter	NS	
4.	9-0013-4	1	Hex. head screw	M12x140	DIN 933
5.	9-1112	2	Hex. nut	M12	DIN 934
6.	9-0013-8	1	Hex. head screw	M12x180	DIN 933
7.	4-1132-1	1/1	Guide pulley shaft		
8.	9-2800	1/1	Grease nipple	R1/8"	
9.	9-1316	1/1	Lock washer	M16 Nordlock	
10.	9-1016	1/1	Hex. nut	M16	DIN 934
11.	4-5025-0	1/1	Guide pulley	Compl.	
12.	4-1131	2/2	Clamping ring		
13.	9-0410-5	2/2	Hex. head retaining screw	M10x50	DIN 914
14.	9-1110	2/2	Hex. nut	M10	DIN 934
15.	9-2015	2/2	O-ring	15,6x1,78	
16.	8-5025-2	2/2	Bearing bush	WB800 Ø25/28-30	
17.	4-1141	1/1	Guide pulley		-->no.279
	4-1141-1	1/1	Guide pulley		no.280-->
18.	4-1146	1/1	Shaft bearing		
19.	2-1006-1	1	Track housing	SS	
20.	3-1040	1/1	Abrasion rail		
21.	3-1083	1/1	Abrasion rail		
22.	3-1039	1/1	Abrasion rail		
23.	15-35000	1	Abrasion plate		no.596-->
24.	4-1152	1/1	Track chain	needle track	
	4-1151	1/1	Track chain	\ /-model	
	4-1153	1/1	Track chain	2-level rod (Ø25)	
	4-1153-1	1/1	Track chain	needle track (Ø25)	
	4-1153-2	1/1	Track chain	1-level rod (Ø25)	
25.	4-1150-21	1/1	Track link	\ /-model	
	4-1152-11	1/1	Track link	needle-model	
26.	4-1150	1/1	Track chain	/-model	
27.	4-1150-11	1	Track link	/-model	
	4-1153-11	1	Track link	(Ø25) \ /-model	
	4-1153-12	1	Track link	(Ø25) needle-model	
	4-1153-13	1	Track link	(Ø25) /-model	
28.	4-1150-3	1	Track joint pins		

Tracks

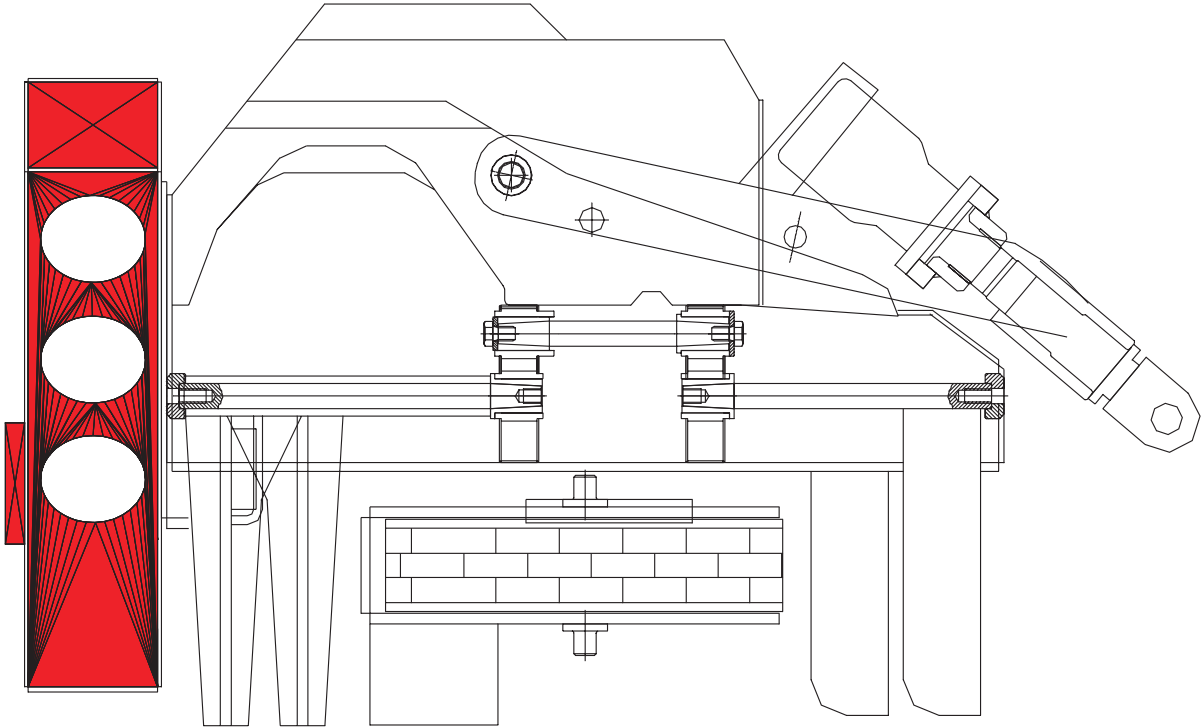


**Tracks**

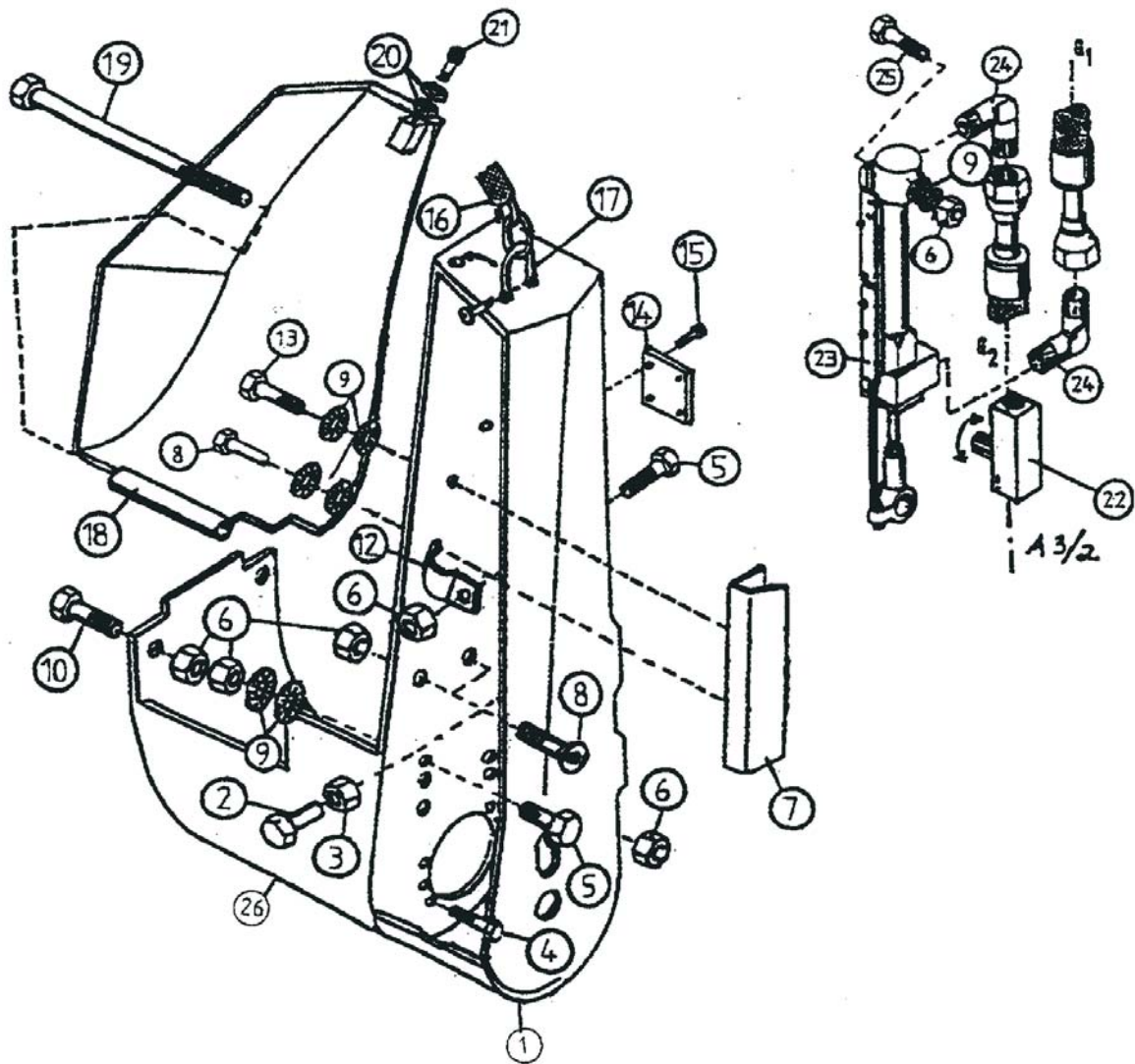
<b>POS</b>	<b>NUMBER</b>	<b>QTY</b>	<b>ITEM</b>	<b>NOTE</b>
29.	4-1150-4	1	Track side plate	Weld model
30.	4-1150-9	1	Track side plate	
31.	4-1150-5	1	Outer bushing	Ø13,3/10 L=10
	10-35016	1	Outer bushing	Ø15,3/25 L=19 no.703-->
	10-35000	1	Outer bushing	Ø35/25 L=19
32.	4-1150-6	1	Inner bushing	Ø10,3/13 L=29
	10-35015	1	Inner bushing	Ø10,3/15 L=29 no.703-->
33.	4-1150-7	1	Side plate	
34.	4-1150-8	1	Pin	



### 5. Saw casing



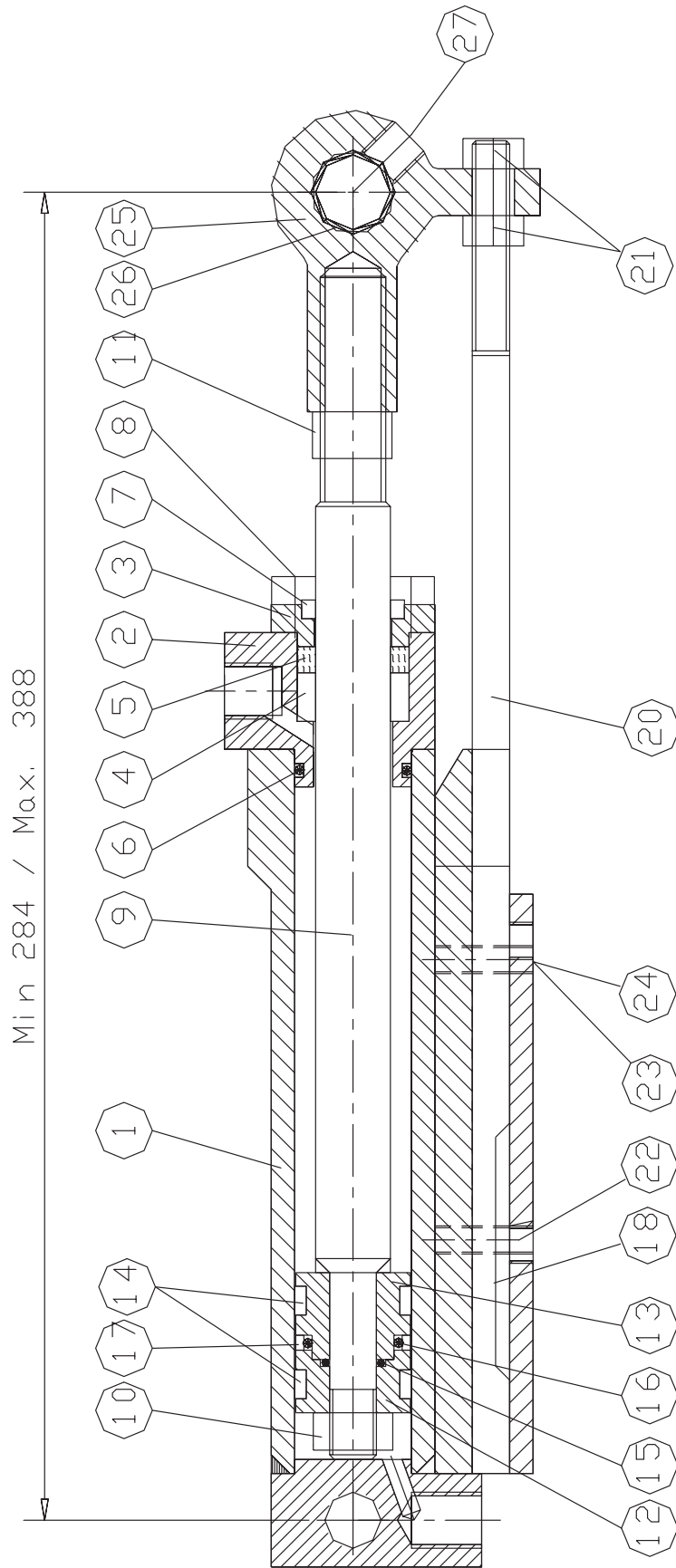
Saw casing



## Saw casing

POS	NUMBER	QTY	ITEM	NOTE
1.	5-1300	1	Saw casing	No.289/96-->
2.	9-0016-4	1	Hex. head screw	M16x40 DIN 933
3.	9-1016	1	Hex. nut	M16 DIN 934
4.	9-0010-3	1	Hex. head screw	M10x30 DIN 933
5.	9-0012-35	7	Hex. head screw	M12x35 DIN 933
6.	9-1112	11	Hex. lock nut	M12 Nyloc DIN 982
7.	4-1115-1	1	Sensor cover	
8.	9-0312-35	2	Hex. socket head screw- count.	M12x35 DIN 7991
9.	9-1312	10	Lock washer	M12 Nordlock
10.	9-0012-25	2	Hex. head screw	M12x25 DIN 933
11.	9-1010	9	Hex. nut	M10 DIN 934
12.	3-1033-19	1	Hose holder	
13.	9-0012-3	1	Hex. head screw	M12x30 DIN 933
14.	3-1033-20	1	Control panel cover	
15.	9-0206-16	4	Hex. socket head screw	M6x16 DIN 912
16.	4-4209-11	1	Hose holder	
17.	4-4209-4	2	Schackle	
18.	3-1033-31	1	Side shelter	
19.	9-0014	1	Hex. head screw	M12x200 DIN 931
20.	9-1310	1	Lock washer	M10 Nordlock
21.	9-0210-3	1	Hex. socket head screw	M10x30 DIN 912
22.	8-2025-14	1	Adjustable choke	
23.	2-1012-1	1	Saw cylinder	Compl.
24.	8-9512-10	2	Angle nipple	R1/4"-1/4" 90°
25.	9-0013	1	Hex. head screw	M12x90 (short- ened 10 mm) DIN 931
26.	3-1033-61	1	Saw motor cover	releasable

Saw cylinder

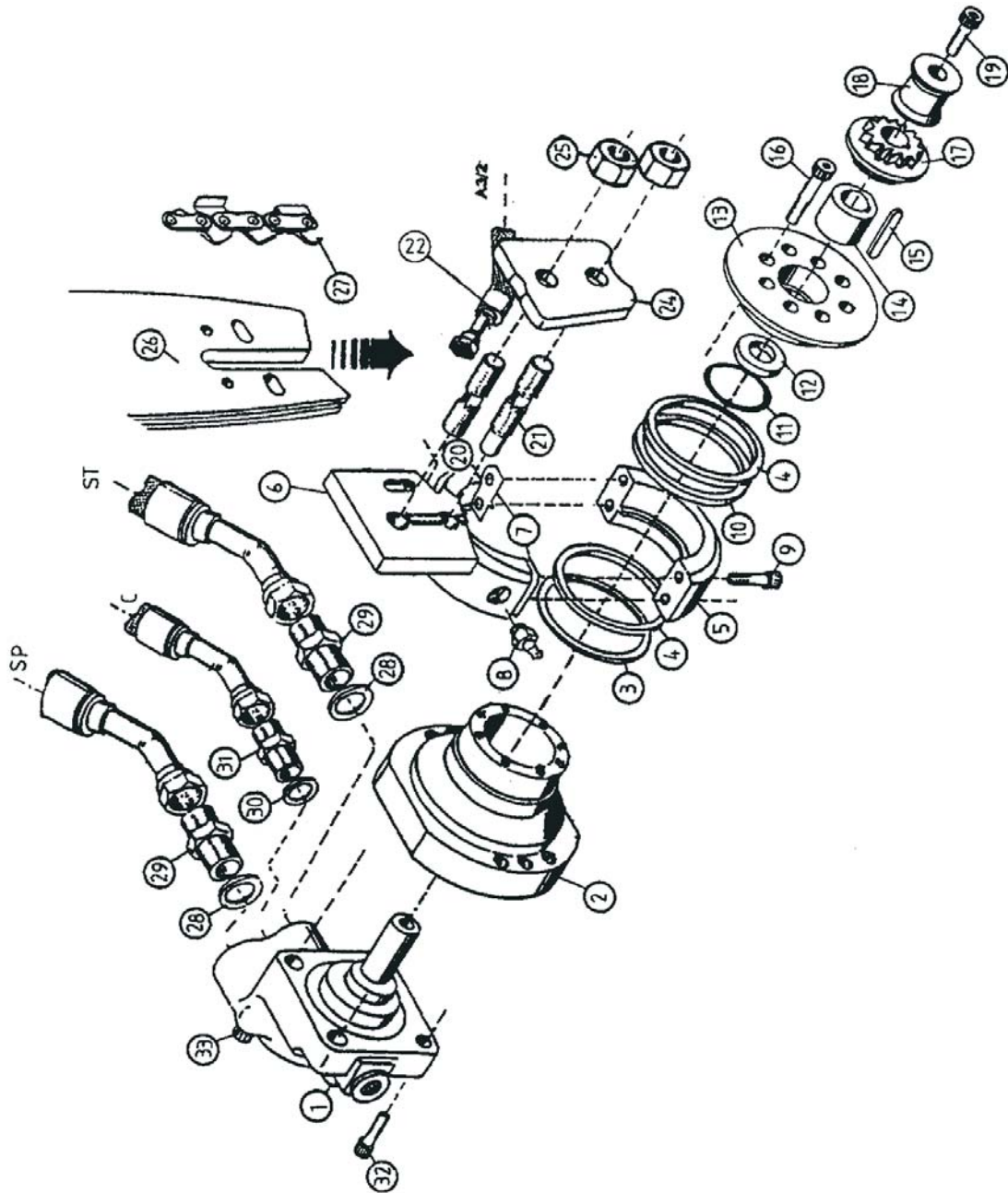




## Saw cylinder

POS	NUMBER	QTY	ITEM	NOTE
0.	9-2125-16	1	Gasket set	Compl.
	2-1012-1	1	Saw cylinder	Compl.
1.	4-1166-2	1	Cylinder pipe+end+rail	15-65005
2.	4-1169-1	1	Stem guide	
3.	4-1168-1	1	Scraper sleeve	
4.	3-4071-3	1	Sliding sleeve	
5.	9-2316-1	1	Stem seal	ø16/25-5.6
6.	9-2020-1	1	O-ring	ø20x2,6
7.	9-2516	1	Scraper ring	ø16/22-3/4
8.	9-0206-45	4	Hex. socket head screw	M6x45
9.	4-1171-1	1	Stem	ø16
10.	9-1110	1	Lock nut	M10 Nyloc
11.	4-4149	1	Hex. nut	M14 AV 19
12.	4-1170-11	1	Piston upper part	
13.	4-1170-21	1	Piston lower part	
14.	9-2406	2	Slide	2,5x6,0x25
15.	9-2010	1	O-ring	ø10x2
16.	9-2017	1	O-ring	ø17x2,6
17.	9-2217	1	Piston seal	Shamban 3,2x17x5/25
18.	4-1122-1	1	Sensor bracket	
19.	-	-	-	-
20.	4-1157-1	1	Slide	
21.	9-1108	2	Lock nut	M8
22.	8-1000	2	Sensor	M8x1 IND.
23.	9-1206	4	Washer	M6
24.	9-0206-2	4	Hex. socket head screw	M6x20
25.	3-4114-4	1	Stem eye	34114-4
26.	8-5016-2	1	Bearing bush	WB 800 ø16/18-20
27.	9-2800	1	Grease nipple	R1/8"

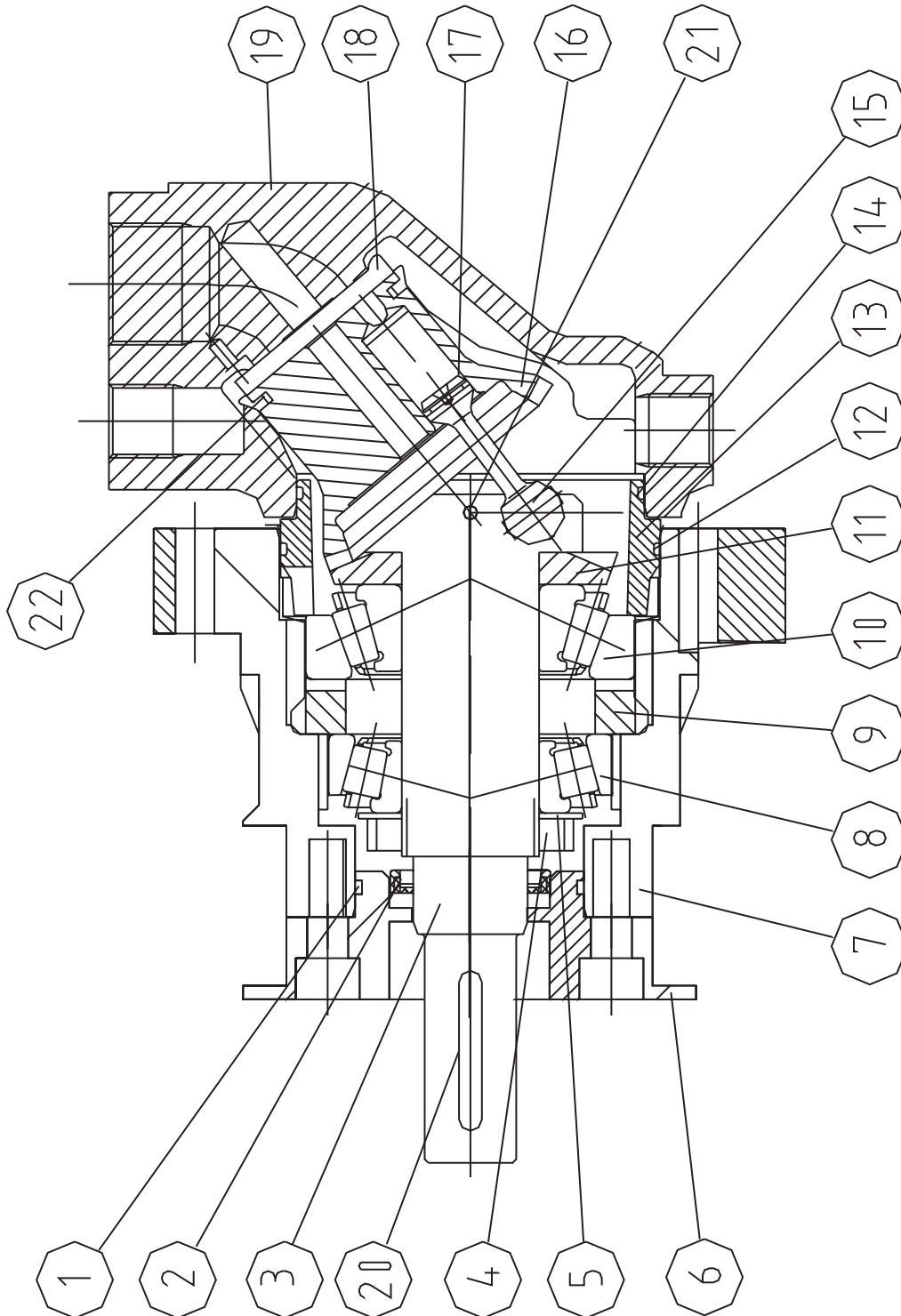
Saw motor and swing



## Saw motor and swing

POS	NUMBER	QTY	ITEM	NOTE	
0.	8-9020-5	1	Gasket set	Volvo F11-10/K	
1.	8-9020-6	1	Hydraulic motor	Volvo F11-10/K	
2.	4-4115-1	1	Frame of motor		
3.	4-4146	1	Cover plate	ø80/100-1	
4.	8-3101-1	2	Bearing	61816 2RS	
5.	15-55014	1	Saw swing, urea	F11-10, compl.	
6.	20-55070	1	Saw swing, urea	F11-10	
7.	4-4202	2	Spacing ring	s=0,1	
8.	9-2800	1	Grease nipple	R1/8"	
9.	9-0208-45	4	Hex. socket head screw	M8x45	DIN 912
10.	8-3101-2	1	Bearing	61816Y	
11.	9-2045-2	1	O-ring	45x2	
12.	9-2305-1	1	Shaft seal	ATD 25/35-5	
13.	4-4148-1	1	End flange	F11-10	
14.	4-4145-2	1	Spacing bushing	ø20/28-35	
15.	8-9020-3	1	Key	Volvo F11-10 6x6	
16.	9-0208-2	8	Hex. socket head screw	M8x20	DIN 912
17.	8-9109-1	1	Drive sprocket	ø20-25 Z=9	
18.	4-4147-1	1	Attachment bushing		
19.	9-0206-2	1	Hex. socket head screw	M6x20	
20.	4-4150-1	1	Fixing screw of flange		
21.	4-4150-2	1	Cylinder shaft pin screw		
22.	8-9307-61	1	Hose with spiral	R1/8" 0,5m	
24.	4-1120	1	Bracket		
25.	9-1020	2	Hex. nut	M20	DIN 934
26.	8-0018	1	Steel sawbar	18"	
27.	8-0018-1	1	Saw chain	404 Z=64	
28.	9-1927-35	2	Usit-ring	3/4"	
29.	8-9705-16	2	Double nipple	R3/4"-1/2"	
30.	9-1917-24	1	Usit-ring	3/8"	
31.	8-9710-11	1	Double nipple	R3/8"-3/8"	
32.	9-0208-4	2	Hex. socket head screw	M8x40	
33.	9-0208-25	2	Hex. socket head screw	M8x75	

Hydraulic motor Volvo F11-10

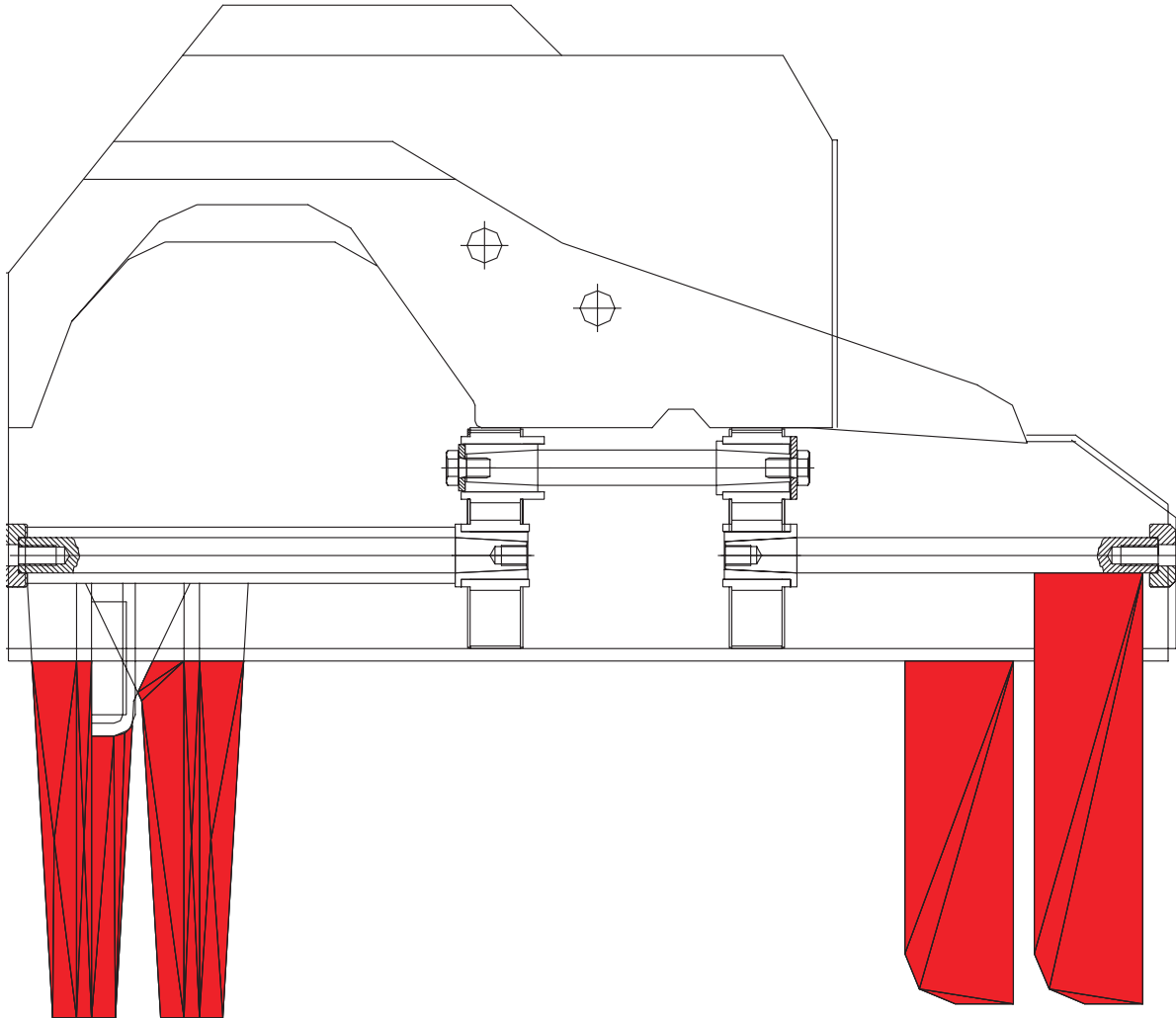


**Volvo F11-10Hydraulic motor Volvo F11-10**

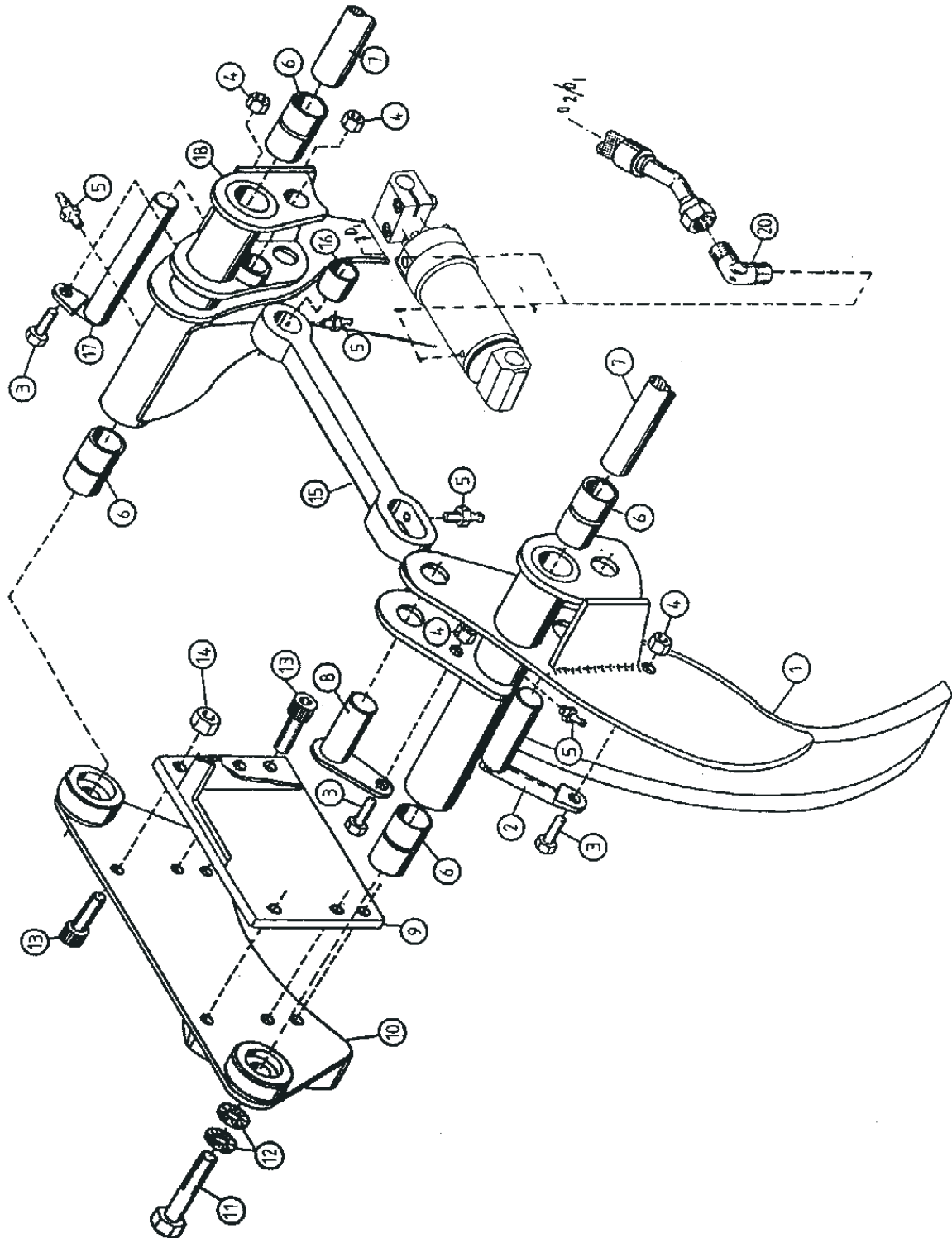
POS	NUMBER	QTY	ITEM	NOTE
0.	8-9020-6	1	Hydraulic motor	Volvo F11-10 Compl.
1.	9-2045-7	1	O-ring	45x2
2.	9-2305-3	1	Shaft seal	ATD 30/40-6
3.	8-9020-9	1	Shaft assy	3796080
4.	-	1	Shaft nut	906634
5.	-	1	Locking ring	
6.	4-4148-1	1	Flange	
7.	4-4115-1	1	Bearing housing	
8.	-	1	Taper roll bearing	118201
9.	-	1	Spacer ring	3700954
10.	-	1	Taper roll bearing	3798537
11.	8-9020-79	1	Gear wheel	3795832
12.	9-2069-2	1	O-ring	- Viton/Nitrile
13.	-	1	Guide sleeve	3797259
14.	9-2069-2	1	O-ring	945624/948974 Nitrile/Viton
15.	8-9020-8		Piston	3708657
16.	8-9020-10		Cylinder barrel	3702958
17.	8-9020-12		Piston ring	72747
18.	-		Valve plate	3702392 (type G)
19.	-		Drum upper case	3703010 (type B)
20.	-		Plain wedge	3796439
21.	-		Pin	3792207
22.	8-9020-11		Retaining ring	3700973



## 6. Delimiting knives



Delimiting knives

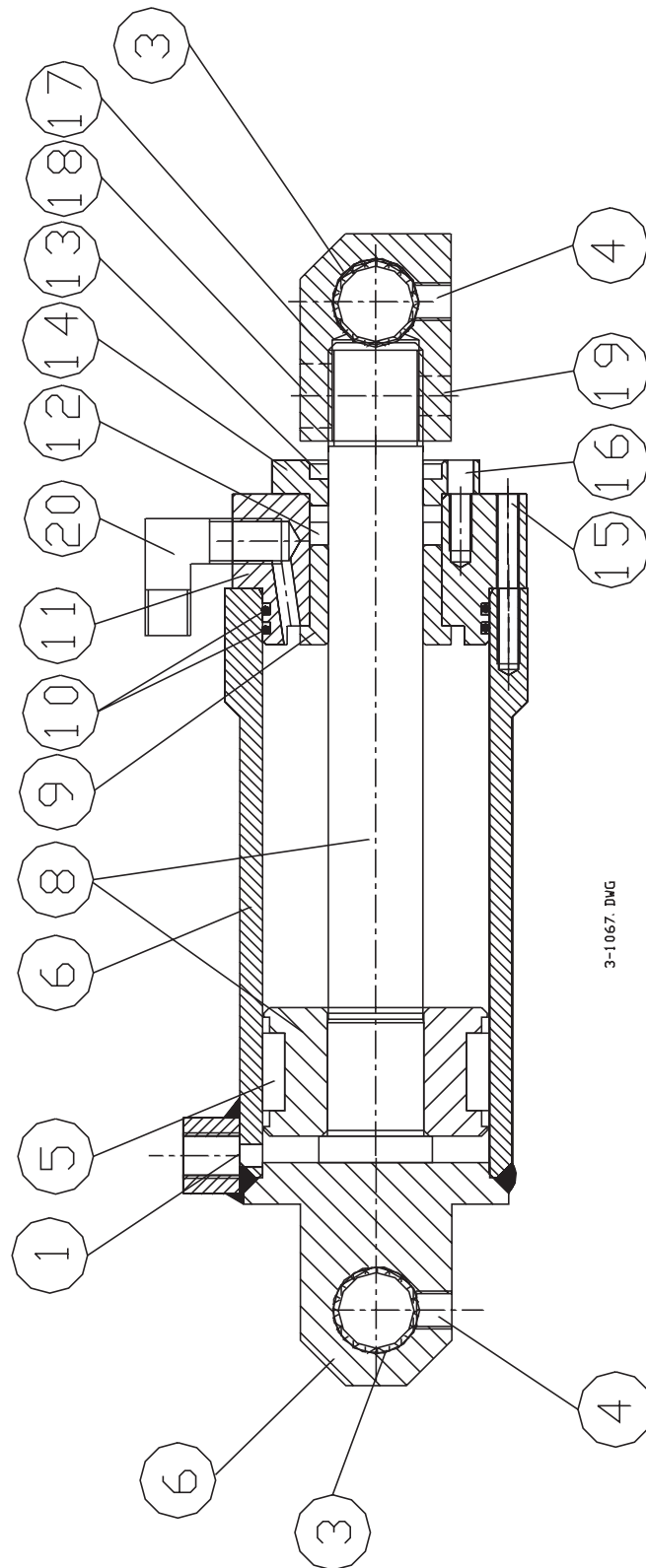




## Delimiting knives

POS	NUMBER	QTY	ITEM	NOTE	
1.	1-1004	1	Delimiting knife	NS	
1.	1-1003	1	Delimiting knife	SS	
2.	4-1096-1	1	Attachment pin	Ø20, L-110, c-c 65	
3.	9-0010-25	3	Hex. head screw	M10x25	DIN 933
4.	9-1010	4	Hex. nut	M10	DIN 934
5.	9-2800	3	Grease nipple	R 1/8"	
6.	8-5028-2	8	Bearing bush	WB800 Ø28/31-30	
7.			Frame part		
8.	4-1093-1	1	Attachment pin	Ø20, L-37, c-c 65	
9.			Frame part		
10.	3-1053	1	Fron delimiting knife		
11.	9-0116-4	3	Hex. head screw	M16x1,5x40	DIN 961
12.	9-1316	2	Locking washer	M16 Nordlock	
13.	9-0212-3	6	Hex. socket head screw	M12x30	DIN 912
14.	9-1112	4	Lock nut	M12 Nyloc	DIN 982
15.	3-1024-1	1	Reaction bar		
16.	8-5020-1	2	Bearing bush	WB800 Ø20/23-20	
17.	4-1095-1	1	Attachment pin	Ø20, L-165, c-c 65	
18.	1-1003-1	1	Delimiting knife	SS	
19.	3-1067	1	Hydraulic cylinder		
20.	8-9513-1	1	Angle nipple	R 1/4"-1/4" 90°	
21.	4-1094-1	1	Attachment pin	Ø20, L-85, c-c 65	

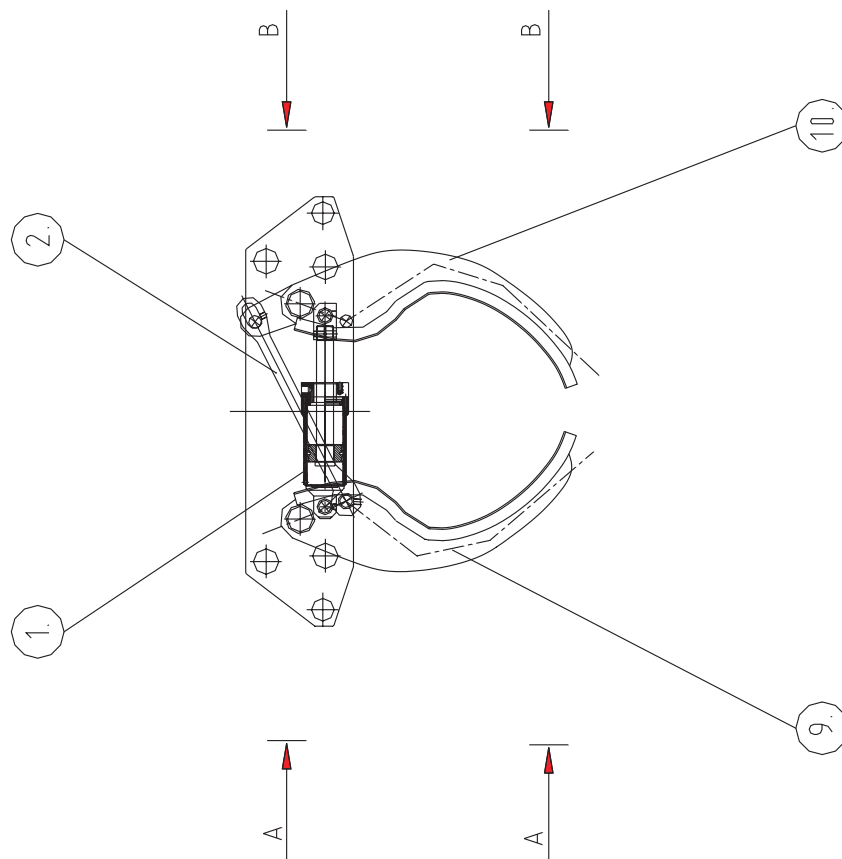
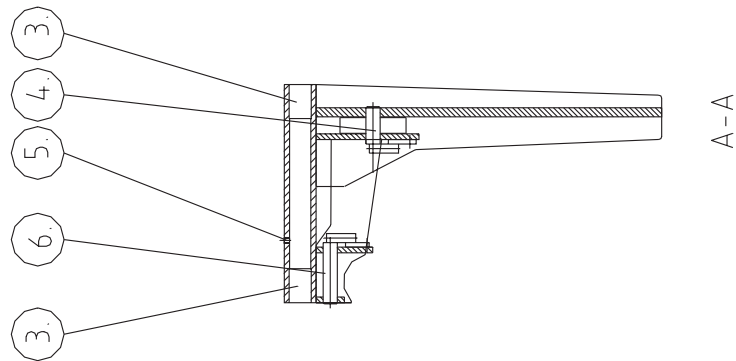
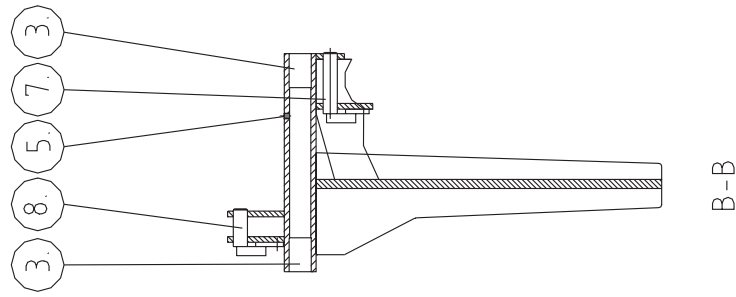
Knife cylinder



## Knife cylinder

POS	NUMBER	QTY	ITEM	NOTE
1.	4-1172	1	Hose connector	
2.	4-1173	1	Cylinder end piece	
3.	8-5020-30	4	Bearing bush	Ø20-30 WB800
4.	9-2800	2	Grease nipple	R 1/8"
5.	9-2248	1	Piston seal	DPS 60/48-20
6.	3-1067-11	1	Cylinder pipe	
7.	-	-	-	
8.	4-1174-5	1	Piston+piston stem	
9.	4-1175	1	Sliding sleeve	
10.	9-2055	1	O-ring	
11.	4-1176	1	Stem guide	
12.	9-2325-1	1	Piston stem seal	1541-25/35-9
13.	9-2525	1	Stem wiper	P7 25/35-5/7
14.	4-1177	1	Wiper ring	
15.	9-0206-4	12	Hex. socket head screw	M6x40
16.	9-0206-25	4	Hex. socket head screw	M6x25
17.	4-1178	1	Stem eye	
18.	9-0210-5	2	Hex. socket head screw	M10x50
19.	9-1110	2	Lock nut	M10
20.		1	Angle clip	

Back knives

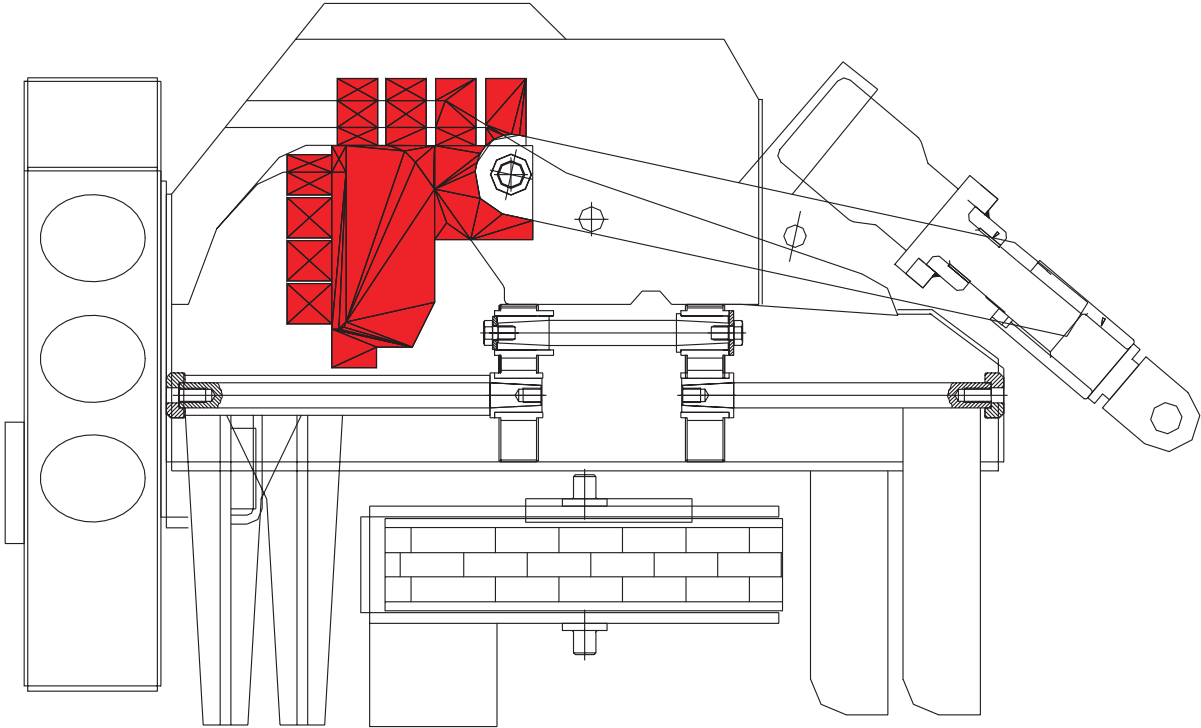


**Back knives**

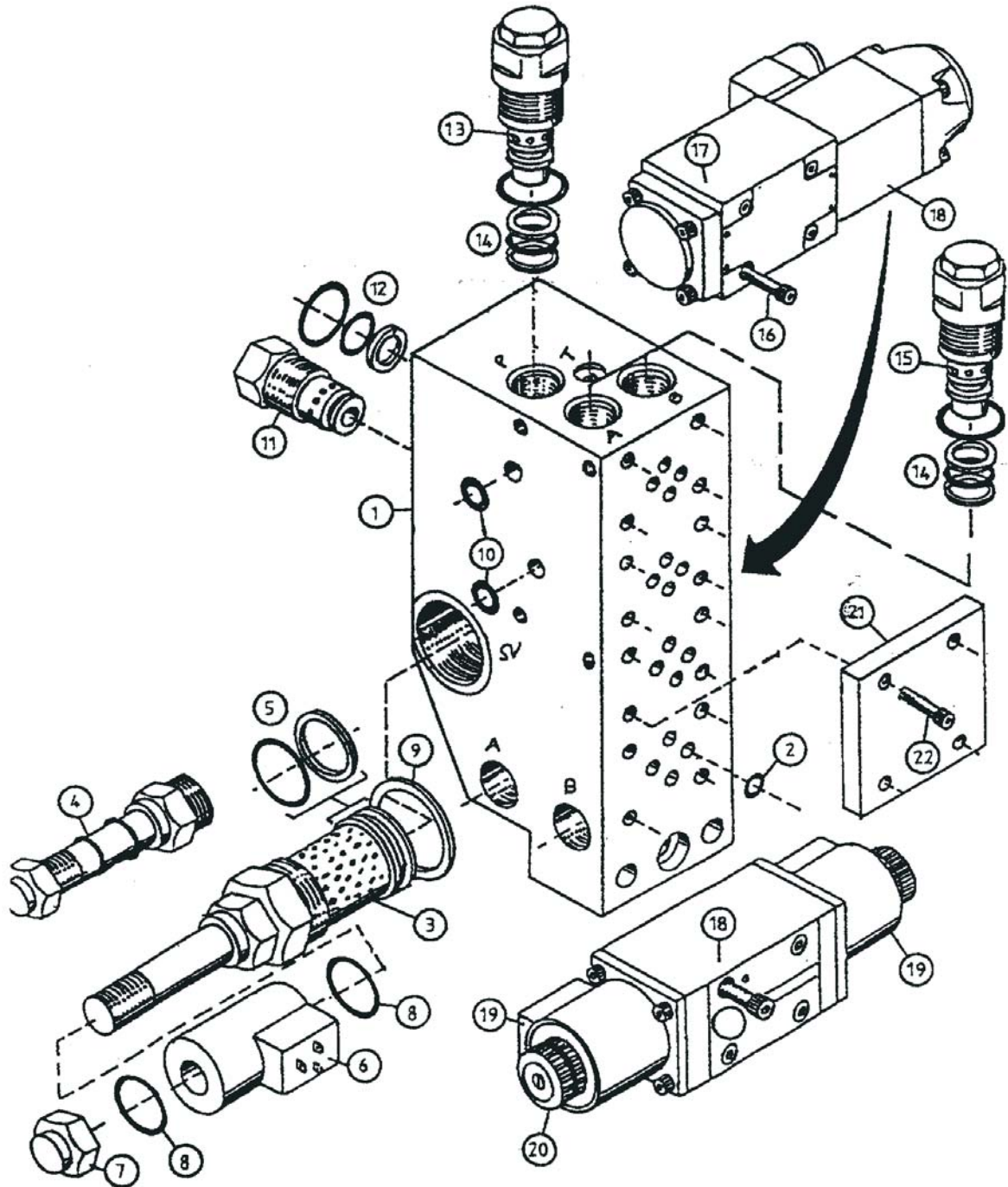
<b>POS</b>	<b>NUMBER</b>	<b>QTY</b>	<b>ITEM</b>	<b>NOTE</b>
0.	71300-13	1	Back knives	Compl.
1.	1-2096	1	Cylinder	
2.	3-4044-1	1	Adjusting rod	
3.	8-5028-2	8	Bearing bush	WB800 Ø28/31-30
4.	4-1095-2	1	Pin of adjusting rod	
5.	9-2800	2	Grease nipple	R1/8"
6.	4-1097-2	2	Cylinder pin	
7.	4-1097-1	1	Cylinder pin	
8.	4-1093-1	1	Pin of adjusting rod	
9.	2-1331	1	Back knife NS	
10.	2-1330	1	Back knife SS	



# 7. Valve blocks



Valve blocks (big block)

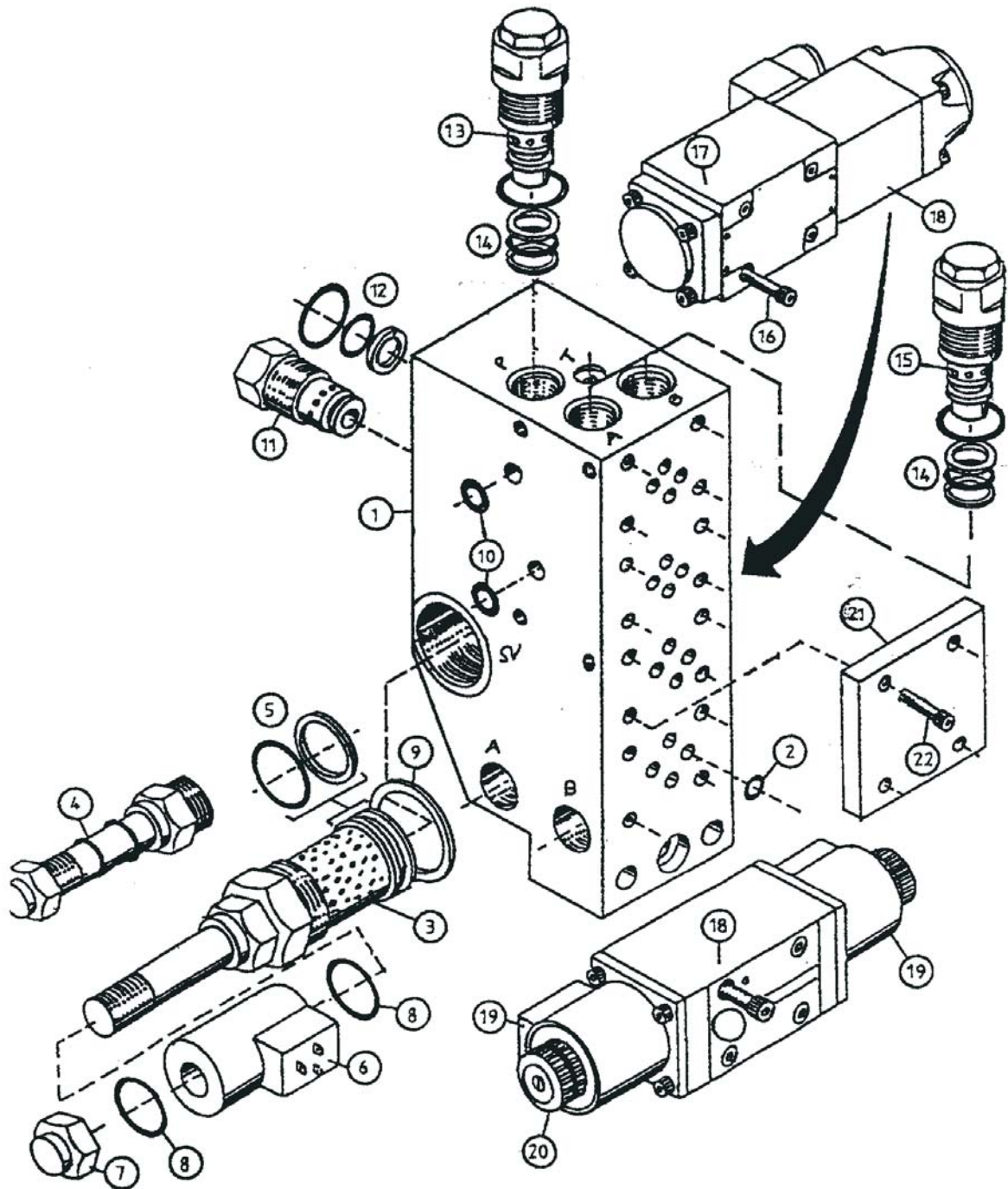




## Valve blocks (big block)

POS	NUMBER	QTY	ITEM	NOTE
1.	1-5002	1	Large block 2L FE 2L Fe	
2.	8-2020-5	4	O-ring	Vickers, Denison, Rexroth, Mecman
3.	8-2009	1	Saw valve	EDI A2.0015-05-05-00-00 Compl.
	8-2019	1	Saw valve	Sterling GS06-08-00N
4.	8-2009-15	1	Valve stem	EDI A2.0015-05-05-00
	8-2019-15	1	Valve stem	Sterling No. 365-->
5.	8-2009-5	1	Gasket set	EDI A2.0015-05-05-00-00 Compl.
	8-2019-5	1	Gasket set	Sterling
6.	8-2009-10	1	Magnet solenoid	EDI A2.0015-05-05-00-00
	8-2019-11	1	Magnet solenoid	Sterling 12V
	8-2019-10	1	Magnet solenoid	Sterling 24V
7.	8-2009-20	1	Tightening nut of magnet solenoid	EDI A2.0015-05-05-00-00
	8-2019-20	1	Tightening nut of magnet solenoid	Sterling
8.	9-2014-1	2	O-ring	14x1,8
9.	9-1934-42	1	Usit-ring	ø34/42
10.	9-2012-2	2	O-ring	12x2,5
11.	8-2010	2	Relief valve	CV 3-10
12.	8-2010-5	5	Gasket set	CV 3-10
13.	8-2003-1	2	Pressure relief valve	TBA 250
14.	8-2007-5	2	Gasket set	TBS 125, TBA 100
15.	8-2007	2	Pressure relief valve/Imu-vent	TBS 125/240
16.	9-0205-3	12(16)	Hex. socket head screw	M5x30
17.	8-2020-21	1	Direction valve 24V	Vickers DG-3-2BL-MUH760
	8-2020-14	1	Direction valve 12V	Mecman
	8-2020-25	1	Direction valve 24V	Hägglund/Denison 4D01-35-103-0501-0
	8-2020-13	1	Direction valve 12V	Hägglund/Denison 4D01-35-103-0501-0
	8-2020-11	1	Direction valve 12V	Vickers DG4-3-2BL-MUH760
	8-2020-24	1	Direction valve 24V	Mecman WEVDK-43-D6-2-P315
	8-2020-22	1	Direction valve 24V	Rexroth 4WE 6 EB53/BG 24 NZ4 SO
	8-2020-12	1	Direction valve 12V	Rexroth 4WE 6 EB53/BG 24 NZ4 SO

Valve blocks (big block)



## Valve blocks (big block)

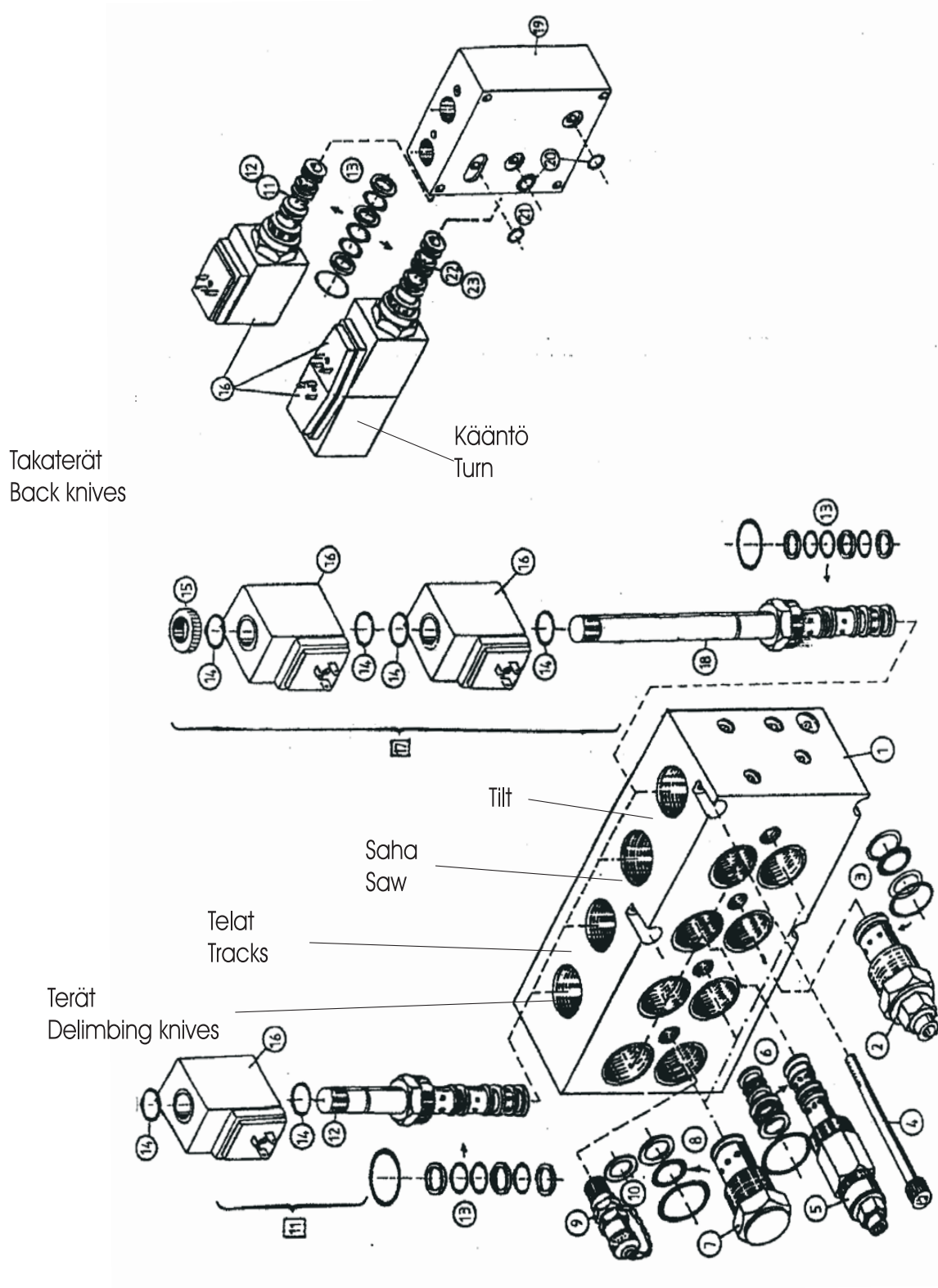
POS	NUMBER	QTY	ITEM	NOTE
18.	8-2021-11	1	Direction valve P 12V	Vickers DG4-3-2BL-MUH760
	8-2021-13	1	Direction valve P 12V	Hägglund/Denison 4D01-35-103-0501-1
	8-2021-24	1	Direction valve P 24V	Mecman WEVDK-43-&6-2-P315
	8-2021-25	1	Direction valve P 24V	Häg- glund/Denison4D01-35-10 3-0501-1
	8-2021-22	1	Direction valve P 24V	Rexroth 4WE 6 EB53/BG 24 NZ 4 SO
	8-2021-21	1	Direction valve P 24V	Vickers DG4-3-2BL-MUH760
	8-2021-12	1	Direction valve P12V	Rexroth 4WE 6 EB53/BG 24 NS4 SO
	8-2021-14	1	Direction valve P12V	Mecman WEVDK-43-D6-2-P315
19.	8-2020-7	6(7)	Magnet solenoid	24V
	8-2020-71	6(7)	Magnet solenoid	12V
20.	8-2020-72	6(7)	Tensioning nut of solenoid	
21.	8-2020-7	1	Cover plate	
22.	9-0205-25	4	Hex. socket head screw	M5x25

## NOTE!

Pos. 2 Direction valve O-ring 9,25x1,78 (90 shore).

Instead for O-ring possible to assemble two ø8/12-0,8 copper rings)

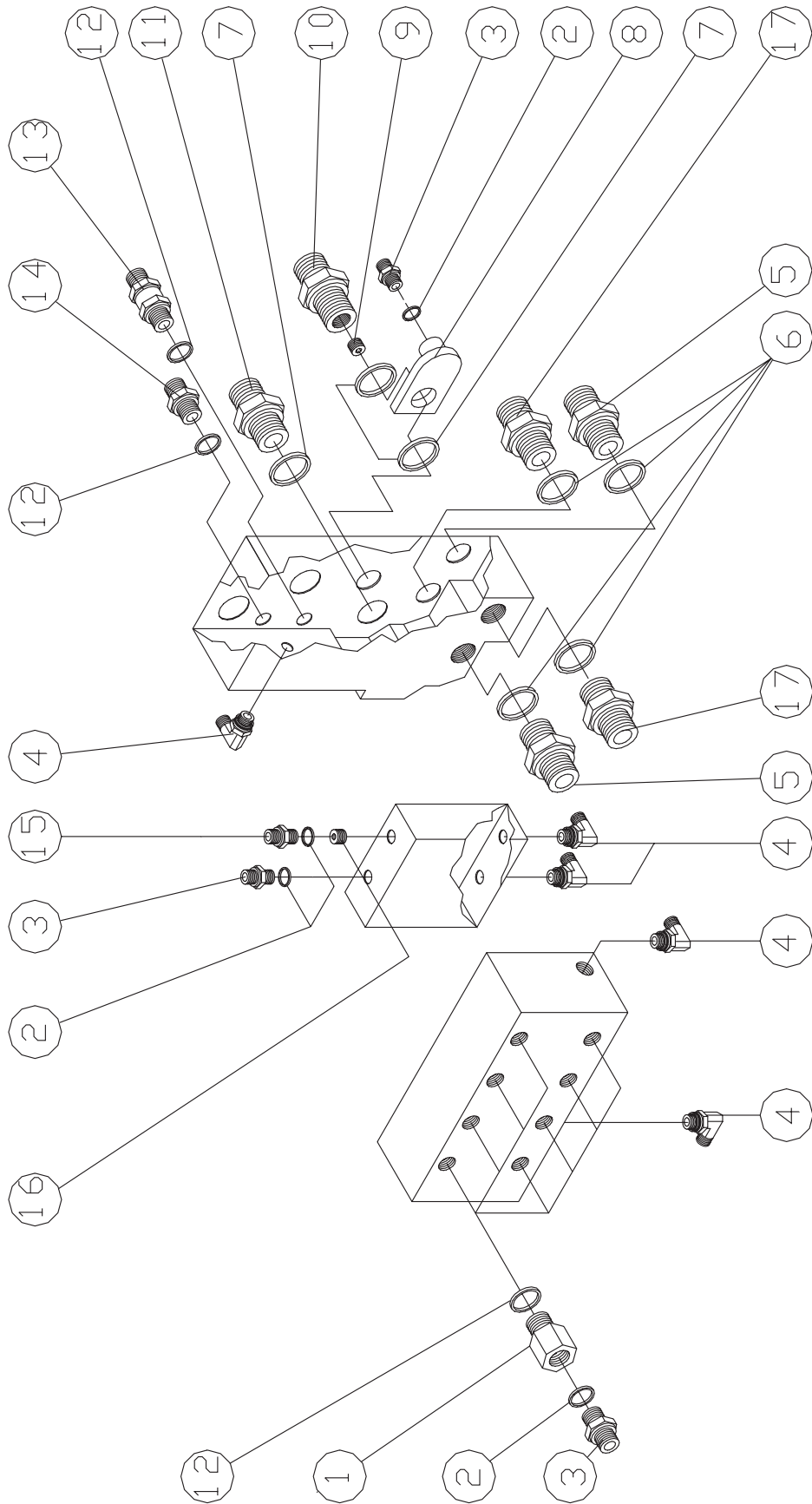
Valve blocks (small and medium blocks)



## Valve blocks (small and medium blocks)

POS	NUMBER	QTY	ITEM	NOTE
1.	1-4003-1	1	Small block Fe	
2.	8-2008	1	Saw valve	Conic. NV 1020
3.	8-2008-5	1	Gasket set	Conic. NV 1020
4.	9-0207	4	Hex. socket head screw	M6x100 DIN 912
5.	8-2005-1	4	Pressure reducing valve	Waterman
	8-2005	4	Pressure reducing valve	Fluid
	8-2017	4	Pressure reducing valve	Command control
6.	8-2017-5	4	Gasket set	Command control
	8-2013-5	4	Gasket set	Vickers, Waterman, Fluid
7.	8-2010	3	Relief valve	CV 3-10
8.	8-2010-5	3	Gasket set	CV 3-10
9.	8-3000	4	Measuring quick coupling	R1/4"
10.	8-3000-5	4	Gasket set	Mpl R1/4"
11.	8-2000	3(4)	Magnetic valve	Comatrol 4205 Compl.
12.	8-2000-01	3(4)	Valve stem	Comatrol 4205
13.	8-2000-5	6	Gasket set	Comatrol
14.	9-2016-1	8(10)	O-ring	16x1,9
15.	8-1010-4	4	Tensioning nut for solenoid	
16.	8-1010	7(8)	Magnet solenoid	12V
	8-1011	7(8)	Magnet solenoid	24V
17.	8-2000-2	(1)	Magnetic valve	Comatrol 4309 (2-act.) Compl.
18.	8-2000-6	(1)	Valve stem	Comatrol 4309 (2-act.)
19.	3-4073-3	1	Intermediate block 2L Fe	
	3-4073-35	1	Intermediate block 2L Al	
20.	9-2012-2	2	O-ring	12x2,5
21.	9-2019-3	2	O-ring	19x2,5
22.	8-2000-1	1	Magnetic valve	Comatrol 4306 Compl.
23.	8-2000-11	1	Valve stem	Comatrol 4306

Block hose piping



21-001.dwg

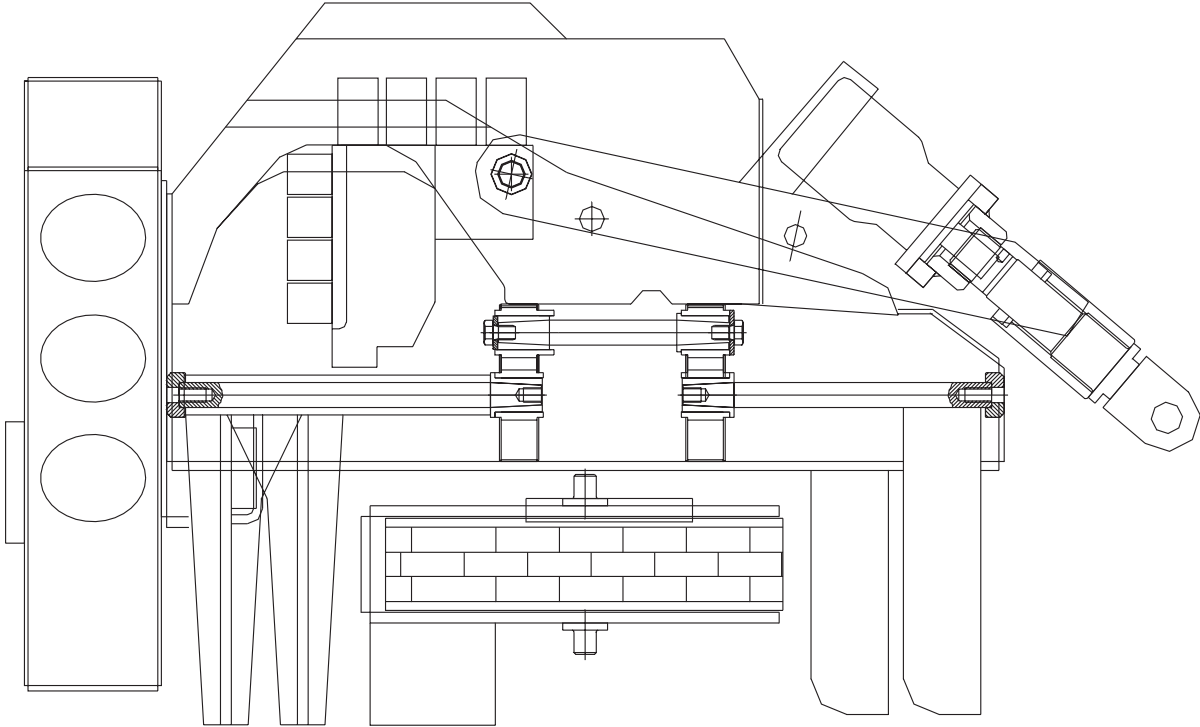
## Block hose piping

POS	NUMBER	QTY	ITEM	NOTE
1.	8-9502-01	8	Extension nipple	R3/8"-1/4"
2.	9-1914-2	11	Usit-rengas	ø14/20
3.	8-9500-10	10	Double nipple	R1/4"-1/4"
4.	8-9513-1	5	Angle nipple	R1/4"-1/4" 90°
5.	8-9500-13	2	Double nipple	R3/4"-5/8"
6.	9-1927-35	4	Usit-ring	ø27/35
7.	9-1921-29	3	Usit-ring	ø21/29
8.	4-5140	1	Flange adapter fitting	
9.	9-0430-1	1	Throttle	R1/4x10ø5
10.	8-9500-16	1	Double nipple	R1/2"-1/2"
11.	8-9500-15	1	Double nipple	R1/2"-1/2"
12.	9-1917-24	10	Usit-ring	ø17/24
13.	8-3005-05	1	Non-return valve	R3/8"-3/8"
14.	8-9501-15	1	Double nipple	R3/8"-1/2"
15.	8-9500-11	1	Double nipple	R1/4"-1/4"
16.	9-0408-8	1	Throttle	M8x8 ø2
17.	8-9501-4M	2	Double nipple, lathed	R3/8"-5/8"

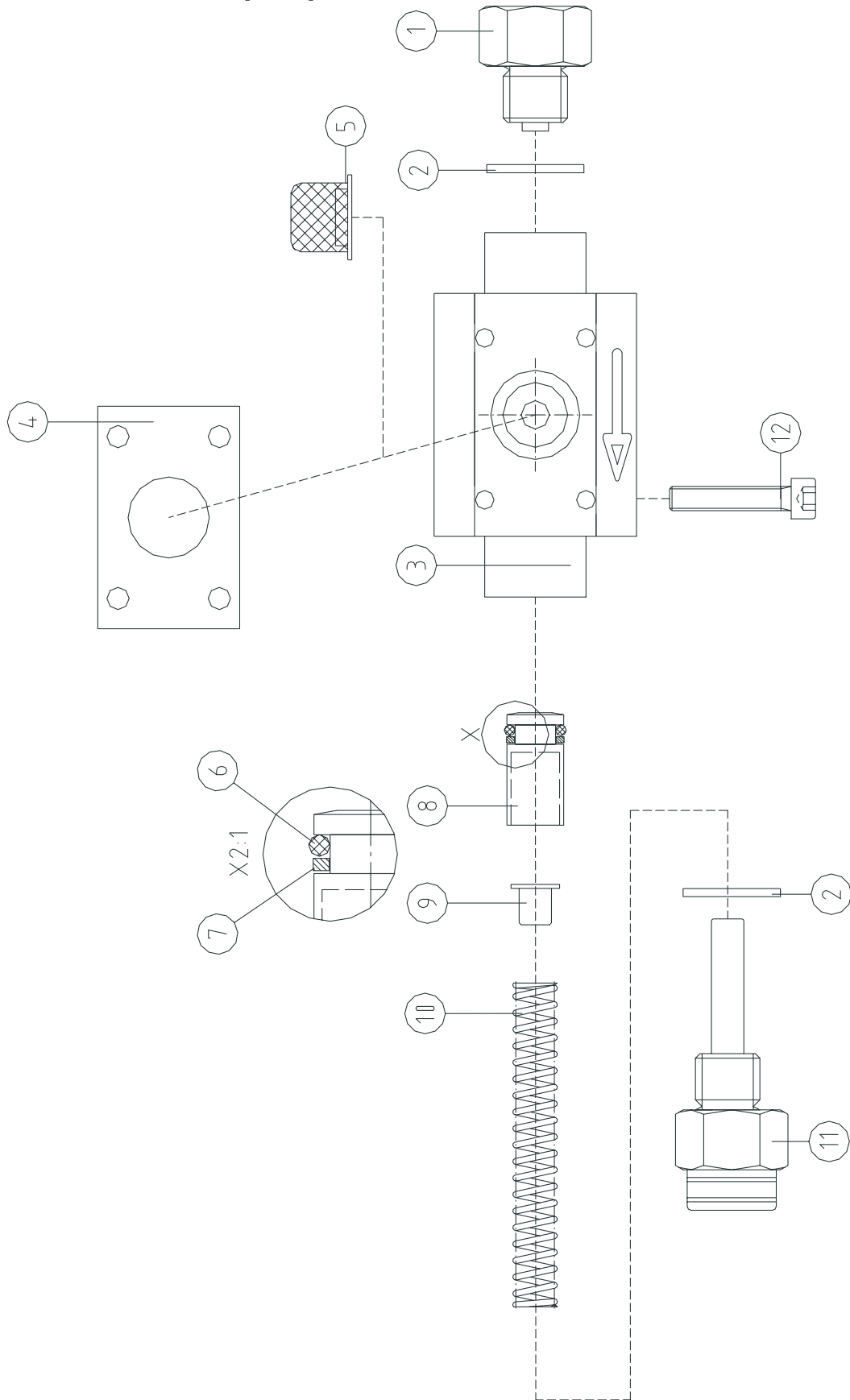




### 8. Other spare parts



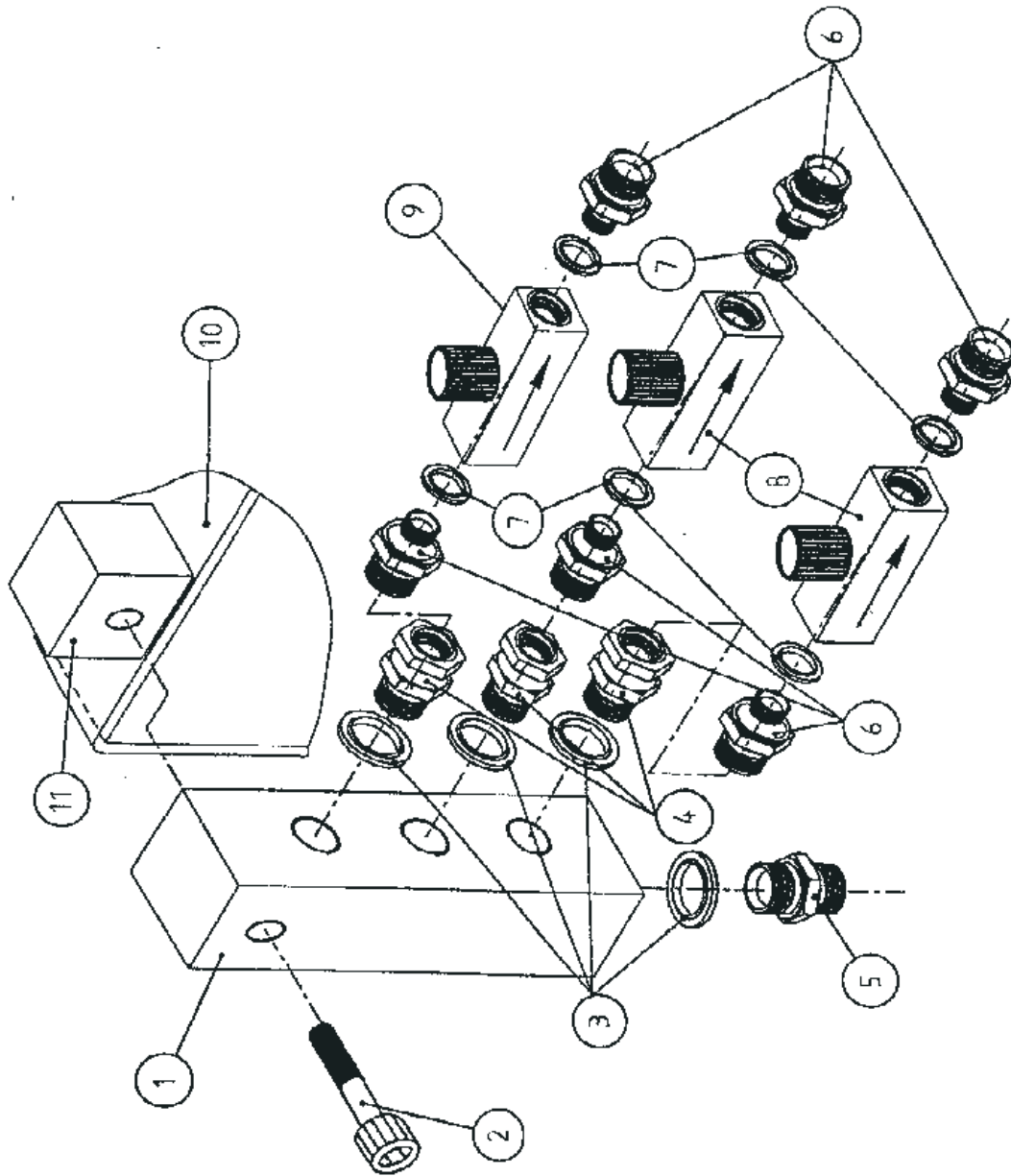
### Saw bars lubrication pump



### Saw bars lubrication pump

POS	NUMBER	QTY	ITEM	NOTE
0.	8-9305	1	Lubrication pump	Compl.
1.	8-9305-2	1	Adapter	
2.	9-1917-24	2	Usit-ring	R3/8"
3.	8-9305-3	1	Frame	
4.	8-9305-1	1	Rubber seal	
5.	8-9305-5	1	Screen	
6.	8-9305-6	1	O-ring	
7.	8-9305-7	1	Support ring	
8.	8-9305-8	1	Piston	
9.	8-9305-4	1	Spring	
10.	8-9305-10	1	Adapter/check valve	
11.	8-9305-11	1	Stroke limiter	5mm
11.	8-9305-16	1	Stroke limiter	10mm
12.	9-0206-3	4	Hex. head socket screw	M6x30 DIN 912

Saw and track lubrication controllblock



**Saw and track lubrication controllblock**

<b>POS</b>	<b>NUMBER</b>	<b>QTY</b>	<b>ITEM</b>	<b>NOTE</b>	
0.	4-4160	1	Controlblock	Compl.	
1.	4-4160-1	1	Block	25x25x100	
2.	9-0210-35	1	Hex. socket head screw	M10x35	DIN 912
3.	9-1914-20	4	Usit-ring	Ø14/20	
4.	8-9503-10	2	Connect nipple	R1/4"-R1/8"	
5.	8-9500-10	1	Double nipple	R1/4"-R1/4"	
6.	8-9501-12	6	Double nipple	R1/4"-R1/8"	
7.	9-1910-16	6	Usit-ring	ø10/16	
8.	8-2025-2	2	Adjustable choke	FT 1237/2-1-18	
9.	8-2025-14	1	Throttle check valve	FT 1251/5-1-14	
10.	3-1022-1	1	Electric casing		
11.	4-4160-2	1	Fastenpart of controlblock		



## Safety stickers

POS	NUMBER	QTY	ITEM	NOTE
1.	8-9900-1	1	Block cover	
2.	8-9900-20	1	Saw casing	
3.	8-9900-30	1	Tilt	
4.	8-9900-40	1	Pressure accumulator	



### Note

Safety sticker location is on the inside of block cover.

Figure 1

Use protective gloves during maintenance of the sawbar.



Figure 2

Warning of pressure in the pressure accumulator.



Figure 3 and 4

Avoid touching the hot surface and read the service instructions before maintenance. Risk of fingers getting crushed during maintenance.



Figure 5

Risk of falling load. Keep away from the machine.





Numerics		3-1017 .....	35
10-35000 .....	51	3-1017-3 .....	37
10-35015 .....	51	3-1017-32 .....	35, 37
10-35016 .....	51	3-1018 .....	35
1-1003 .....	65	3-1018-3 .....	37
1-1003-1 .....	65	3-1022-1 .....	85
1-1004-1 .....	65	3-1024-1 .....	65
1-1302-11 .....	15	3-1025-1 .....	27
1-1302-12 .....	15	3-1028-1 .....	27
1-1302-13 .....	15	3-1033-19 .....	55
1-1302-14 .....	15	3-1033-20 .....	55
1-1302-15 .....	15	3-1033-31 .....	55
1-1304-11 .....	15	3-1033-61 .....	55
1-1304-12 .....	15	3-1039 .....	49
1-1304-13 .....	15	3-1040 .....	49
1-1304-14 .....	15	3-1052 .....	65
1-1304-15 .....	15	3-1067 .....	65
1-1304-16 .....	15	3-1067-11 .....	67
1-1304-17 .....	15	3-1068 .....	39
1-1304-18 .....	15	3-1069 .....	35, 39
1-1305-16 .....	23	3-1071-1 .....	27, 29
1-1305-18 .....	23	3-1071-11 .....	29
1-2096 .....	69	3-1072 .....	23, 37, 49
1-4003-1 .....	77	3-1072-1 .....	23
1-5002 .....	73	3-1083 .....	49
15-25006 .....	29	3-1107-1 .....	27
15-25007 .....	29	3-2109-1 .....	21
15-35000 .....	37, 49	3-2110-1 .....	21
15-35002 .....	37	3-2110-2 .....	21
15-45003 .....	43	3-2111 .....	21
15-45004 .....	43	3-2113-2 .....	21
15-55014 .....	59	3-2113-3 .....	21
20-50002 .....	47	3-2150 .....	19
20-55070 .....	59	3-2150-1 .....	19
2-1005-1 .....	37, 49	3-2150-2 .....	19
2-1006-1 .....	49	3-2150-3 .....	19
2-1007 .....	49	3-2150-4 .....	19
2-1008 .....	49	3-2150-83 .....	43
2-1009 .....	37	3-2150-90 .....	19
2-1012-1 .....	55, 57	3-2151 .....	19
2-1330 .....	69	3-2151-1 .....	19
2-1331 .....	69	3-2160-1 .....	19
2-2800 .....	37	3-2160-2 .....	19
3-1000-32 .....	17	3-2170-61 .....	35
3-1013 .....	35	3-2170-63 .....	35
3-1014 .....	35	3-2170-73 .....	15
3-1015-1 .....	35	3-4044-1 .....	69
3-1016-1 .....	35	3-4071-3 .....	57

3-4073-3 .....	77	4-1133-1 .....	27
3-4073-35 .....	77	4-1141 .....	49
3-4114-4 .....	57	4-1141-1 .....	49
3-5116-13 .....	43, 47	4-1146 .....	49
3-5125-1 .....	43	4-1150 .....	49
3-5150-1 .....	43	4-1150-11 .....	49
4-0102-12 .....	37	4-1150-21 .....	49
4-1019 .....	35	4-1150-3 .....	49
4-1020 .....	35	4-1150-4 .....	51
4-1039 .....	35	4-1150-5 .....	51
4-1039-1 .....	35	4-1150-6 .....	51
4-1044-1 .....	35	4-1150-7 .....	51
4-1049 .....	35	4-1150-8 .....	51
4-1050 .....	35	4-1150-9 .....	51
4-1093-1 .....	65, 69	4-1151 .....	49
4-1094-1 .....	65	4-1152 .....	49
4-1095-1 .....	65	4-1152-11 .....	49
4-1095-2 .....	69	4-1153 .....	37, 49
4-1096-1 .....	65	4-1153-1 .....	49
4-1097-1 .....	69	4-1153-11 .....	49
4-1097-2 .....	69	4-1153-12 .....	49
4-1106 .....	21	4-1153-13 .....	49
4-1107 .....	21	4-1153-2 .....	49
4-1107-1 .....	21	4-1157-1 .....	57
4-1108 .....	21	4-1166-2 .....	57
4-1109-5 .....	21	4-1168-1 .....	57
4-1110 .....	17	4-1169-1 .....	57
4-1110-11 .....	17	4-1170-11 .....	57
4-1110-2 .....	17	4-1170-21 .....	57
4-1110-21 .....	17	4-1171-1 .....	57
4-1110-3 .....	17	4-1172 .....	39, 67
4-1110-4 .....	17	4-1173 .....	67
4-1110-41 .....	17	4-1174-1 .....	39
4-1110-5 .....	17	4-1174-5 .....	67
4-1110-55 .....	17	4-1175 .....	39, 67
4-1115-1 .....	55	4-1176 .....	39, 67
4-1117 .....	27	4-1177 .....	39, 67
4-1117-1 .....	27	4-1178 .....	67
4-1117-2 .....	27	4-1180 .....	39
4-1117-3 .....	27	4-1181 .....	39
4-1118 .....	49	4-1188-2 .....	29
4-1118-1 .....	49	4-1189 .....	29
4-1120 .....	59	4-1190-1 .....	29
4-1122-1 .....	57	4-1192 .....	29
4-1130-2 .....	41	4-2002 .....	35
4-1130-3 .....	37, 43	4-2108 .....	21
4-1131 .....	49	4-2111-1 .....	41
4-1132-1 .....	49	4-2143 .....	45

4-2144 .....	45, 47	8-2009-20 .....	73
4-2144-1 .....	45, 47	8-2009-5 .....	73
4-3109-34 .....	17	8-2010 .....	73, 77
4-4115-1 .....	59, 61	8-2010-5 .....	73, 77
4-4145-2 .....	59	8-2013-5 .....	77
4-4146 .....	59	8-2017 .....	77
4-4147-1 .....	59	8-2017-5 .....	77
4-4148-1 .....	59, 61	8-2019 .....	73
4-4149 .....	57	8-2019-10 .....	73
4-4150-1 .....	59	8-2019-11 .....	73
4-4150-2 .....	59	8-2019-15 .....	73
4-4151-1 .....	27	8-2019-20 .....	73
4-4160 .....	85	8-2019-5 .....	73
4-4160-1 .....	85	8-2020-11 .....	73
4-4160-2 .....	85	8-2020-12 .....	73
4-4202 .....	59	8-2020-13 .....	73
4-4209-11 .....	55	8-2020-14 .....	73
4-4209-4 .....	55	8-2020-21 .....	73
4-5025-0 .....	49	8-2020-22 .....	73
4-5088 .....	27	8-2020-24 .....	73
4-5140 .....	79	8-2020-25 .....	73
5-1300 .....	55	8-2020-5 .....	73
5-1300-19 .....	23	8-2020-7 .....	75
71300-13 .....	69	8-2020-71 .....	75
8-0018 .....	59	8-2020-72 .....	75
8-0018-1 .....	59	8-2021-11 .....	75
8-1000 .....	21, 57	8-2021-12 .....	75
8-1010 .....	77	8-2021-13 .....	75
8-1010-4 .....	77	8-2021-14 .....	75
8-1011 .....	77	8-2021-21 .....	75
8-2000 .....	77	8-2021-22 .....	75
8-2000-01 .....	77	8-2021-24 .....	75
8-2000-1 .....	77	8-2021-25 .....	75
8-2000-11 .....	77	8-2025-14 .....	55, 85
8-2000-2 .....	77	8-2025-2 .....	85
8-2000-5 .....	77	8-3000 .....	77
8-2000-6 .....	77	8-3000-5 .....	77
8-2003 .....	27	8-3005-05 .....	79
8-2003-1 .....	73	8-3008 .....	27
8-2005 .....	77	8-3008-15 .....	27
8-2005-1 .....	77	8-3100-6 .....	17
8-2007 .....	73	8-3101-1 .....	59
8-2007-5 .....	73	8-3101-2 .....	59
8-2008 .....	77	8-3108-11 .....	21
8-2008-5 .....	77	8-3211 .....	27
8-2009 .....	73	8-5016-2 .....	57
8-2009-10 .....	73	8-5020-1 .....	65
8-2009-15 .....	73	8-5020-2 .....	39

8-5020-3 .....	29	8-9014-0B .....	27, 31
8-5020-30 .....	67	8-9014-10 .....	31
8-5022-2 .....	35	8-9014-11 .....	31
8-5025-0 .....	29	8-9014-12 .....	31
8-5025-01 .....	35	8-9014-13 .....	31
8-5025-1 .....	27, 35	8-9014-14 .....	31
8-5025-2 .....	49	8-9014-15 .....	31
8-5028-1 .....	35	8-9014-16 .....	31
8-5028-2 .....	65, 69	8-9014-17 .....	31
8-5035-03 .....	27	8-9014-3 .....	31
8-5035-1 .....	27	8-9014-4 .....	31
8-5035-21 .....	27	8-9014-5 .....	27, 31
8-5045 .....	27	8-9014-53 .....	31
8-5050-2 .....	37	8-9014-55 .....	31
8-5060-1 .....	27	8-9014-6 .....	31
8-9000-18 .....	45, 47	8-9014-7 .....	31
8-9000-19 .....	45, 47	8-9014-8 .....	31
8-9006-13 .....	45, 47	8-9014-9 .....	31
8-9006-4 .....	47	8-9016-16 .....	31
8-9006-6 .....	45	8-9020-10 .....	61
8-9006-8 .....	45	8-9020-11 .....	61
8-9012-01 .....	47	8-9020-12 .....	61
8-9012-04 .....	47	8-9020-3 .....	59
8-9012-05 .....	47	8-9020-5 .....	59
8-9012-06 .....	47	8-9020-6 .....	59, 61
8-9012-1 .....	45, 47	8-9020-79 .....	61
8-9012-12 .....	41, 45, 47	8-9020-8 .....	61
8-9012-2 .....	47	8-9020-9 .....	61
8-9012-4 .....	41, 47	8-9109-1 .....	59
8-9012-5 .....	45, 47	8-9305 .....	83
8-9012-51 .....	45, 47	8-9305-1 .....	83
8-9012-52 .....	45, 47	8-9305-10 .....	83
8-9012-53 .....	45	8-9305-11 .....	83
8-9012-6 .....	37, 41, 43, 45	8-9305-16 .....	83
8-9012-61 .....	47	8-9305-2 .....	83
8-9012-7 .....	45, 47	8-9305-3 .....	83
8-9012-8 .....	45	8-9305-4 .....	83
8-9012-9 .....	45	8-9305-5 .....	83
8-9013-12 .....	45, 47	8-9305-6 .....	83
8-9013-18 .....	45	8-9305-7 .....	83
8-9013-20 .....	45, 47	8-9305-8 .....	83
8-9013-23 .....	45, 47	8-9307-61 .....	59
8-9013-24 .....	47	8-9500-10 .....	41, 79, 85
8-9013-35 .....	45, 47	8-9500-11 .....	79
8-9013-4 .....	45, 47	8-9500-12 .....	43
8-9013-6 .....	45	8-9500-13 .....	79
8-9013-8 .....	45, 47	8-9500-15 .....	79
8-9013-9 .....	45, 47	8-9500-16 .....	79

8-9501-12 .....	85	9-0208-25 .....	35, 59
8-9501-15 .....	79	9-0208-4 .....	27, 35, 59
8-9501-4M .....	79	9-0208-45 .....	59
8-9502-01 .....	79	9-0210-2 .....	43
8-9503-10 .....	43, 85	9-0210-3 .....	37, 41, 55
8-9512-10 .....	27, 55	9-0210-35 .....	85
8-9513-1 .....	27, 65, 79	9-0210-45 .....	29, 41
8-9515-15 .....	27	9-0210-5 .....	39, 67
8-9620-22M .....	45, 47	9-0212-3 .....	65
8-9705-16 .....	59	9-0212-4 .....	41
8-9710-11 .....	59	9-0212-55 .....	27
8-9710-13 .....	41	9-0306-16 .....	21
8-9900-1 .....	87	9-0312-35 .....	55
8-9900-10 .....	87	9-0404-05 .....	19
8-9900-20 .....	87	9-0406-16 .....	19, 35
8-9900-30 .....	87	9-0408-8 .....	79
8-9900-40 .....	87	9-0410-5 .....	49
9-0006-12L .....	21	9-0430-1 .....	79
9-0006-3L .....	21	9-0503-08 .....	19
9-0010-25 .....	65	9-1006 .....	19
9-0010-3 .....	27, 35, 55	9-1010 .....	55, 65
9-0010-35 .....	27	9-1016 .....	37, 49, 55
9-0012-25 .....	55	9-1020 .....	59
9-0012-3 .....	55	9-1108 .....	57
9-0012-35 .....	55	9-1110 ...	27, 29, 35, 39, 49, 57, 67
9-0012-3L .....	35	9-1112 .....	27, 37, 49, 55, 65
9-0013 .....	55	9-1116 .....	17
9-0013-4 .....	49	9-1130-2 .....	27
9-0013-8 .....	37, 49	9-1191-11 .....	27
9-0014 .....	55	9-1206 .....	57
9-0016-4 .....	55	9-1212 .....	27
9-0017-0 .....	17	9-1310 .....	35, 43, 55
9-0116-35 .....	15	9-1312 .....	41, 55
9-0116-4 .....	65	9-1316 .....	37, 49, 65
9-0205-16 .....	41, 45, 47	9-1511 .....	27
9-0205-25 .....	75	9-1708-4 .....	21
9-0205-3 .....	73	9-1710-35 .....	21
9-0206-10 .....	43	9-1806-4 .....	41
9-0206-12 .....	19, 43	9-1806-6 .....	27
9-0206-16 .....	31, 55	9-1910-16 .....	85
9-0206-17 .....	37	9-1914-2 .....	79
9-0206-2 .....	57, 59	9-1914-20 .....	41, 85
9-0206-25 .....	39, 67	9-1917-24 .....	59, 79, 83
9-0206-3 .....	83	9-1921-29 .....	41, 79
9-0206-4 .....	29, 39, 67	9-1927-35 .....	59, 79
9-0206-45 .....	57	9-1934-42 .....	73
9-0207 .....	77	9-2010 .....	57
9-0208-2 .....	59	9-2012-2 .....	73, 77

9-2014-1 .....	73
9-2015 .....	49
9-2016-1 .....	77
9-2017 .....	57
9-2019-3 .....	77
9-2020-1 .....	57
9-2022 .....	27
9-2025-1 .....	41
9-2045 .....	29
9-2045-2 .....	59
9-2045-7 .....	61
9-2053 .....	31
9-2055 .....	39, 67
9-2060 .....	19
9-2069-2 .....	61
9-2072 .....	41, 47
9-2082 .....	41
9-2099-8 .....	31
9-2125-16 .....	57
9-2150-25 .....	29
9-2160-25 .....	39
9-2217 .....	57
9-2240 .....	29
9-2248 .....	39, 67
9-2305-1 .....	59
9-2305-3 .....	61
9-2316-1 .....	57
9-2325-1 .....	29, 39, 67
9-2406 .....	57
9-2516 .....	57
9-2525 .....	29, 39, 67
9-2800 .....	27, 29, 35, 39, 49, 57, 59, 65, 67, 69
9-2925-2 .....	35

## **KONE-KETONEN OY**

Kehätie 25  
FIN-64100 Kristiinankaupunki  
FINLAND

[www.kone-ketonen.com](http://www.kone-ketonen.com)  
[keto-harvesters@kone-ketonen.com](mailto:keto-harvesters@kone-ketonen.com)

Telephone: +358 6 220 4100  
Telefax: +358 6 221 2179



